

DISTRICT I  
1625 N. FRENCH DR., HOBBBS, NM 88240

DISTRICT II  
1301 W. GRAND AVENUE, ARTESIA, NM 88210

DISTRICT III  
1000 Rio Brazos Rd., Aztec, NM 87410

DISTRICT IV  
1220 S. ST. FRANCIS DR., SANTA FE, NM 87506

State of New Mexico  
Energy, Minerals and Natural Resources Department

OIL CONSERVATION DIVISION  
1220 SOUTH ST. FRANCIS DR.  
Santa Fe, New Mexico 87505

Form C-102  
Revised October 12, 2005  
Submit to Appropriate District Office  
State Lease - 4 Copies  
Fee Lease - 3 Copies

WELL LOCATION AND ACREAGE DEDICATION PLAT

☐ AMENDED REPORT

API Number 30-015-34852	Pool Code 96622	Pool Name EAGLE CREEK; WOLFCAMP (GAS)
Property Code 35676	Property Name OVERLOOKED FEE COM.	Well Number 1
OGRID No. 14049	Operator Name MARBOB ENERGY CORPORATION	Elevation 3822'

Surface Location

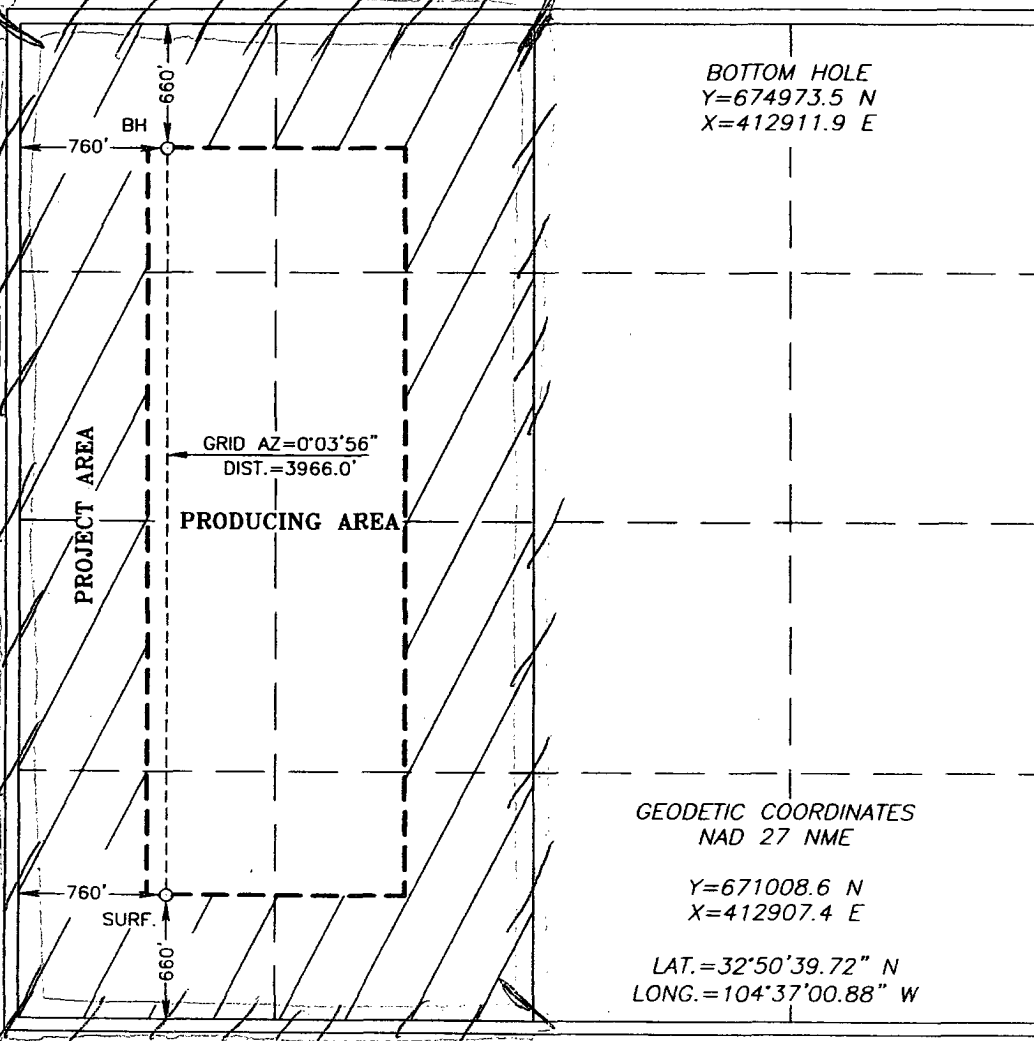
UL or lot No.	Section	Township	Range	Lot Idn	Feet from the	North/South line	Feet from the	East/West line	County
M	8	17-S	24-E		660	SOUTH	760	WEST	EDDY

Bottom Hole Location If Different From Surface

UL or lot No.	Section	Township	Range	Lot Idn	Feet from the	North/South line	Feet from the	East/West line	County
D	8	17-S	24-E		660	NORTH	760	WEST	EDDY

Dedicated Acres	Joint or Infill	Consolidation Code	Order No.
320.00			

NO ALLOWABLE WILL BE ASSIGNED TO THIS COMPLETION UNTIL ALL INTERESTS HAVE BEEN CONSOLIDATED  
OR A NON-STANDARD UNIT HAS BEEN APPROVED BY THE DIVISION



OPERATOR CERTIFICATION

I hereby certify that the information herein is true and complete to the best of my knowledge and belief, and that this organization either owns a working interest or unleased mineral interest in the land including the proposed bottom hole location or has a right to drill this well at this location pursuant to a contract with an owner of such mineral or working interest, or to a voluntary pooling agreement or a compulsory pooling order heretofore entered by the division.

*Nancy T. Bratcher* 5/16/06  
Signature Date

Nancy T. Bratcher  
Printed Name

SURVEYOR CERTIFICATION

I hereby certify that the well location shown on this plat was plotted from field notes of actual surveys made by me or under my supervision, and that the same is true and correct to the best of my belief.

APRIL 24, 2006

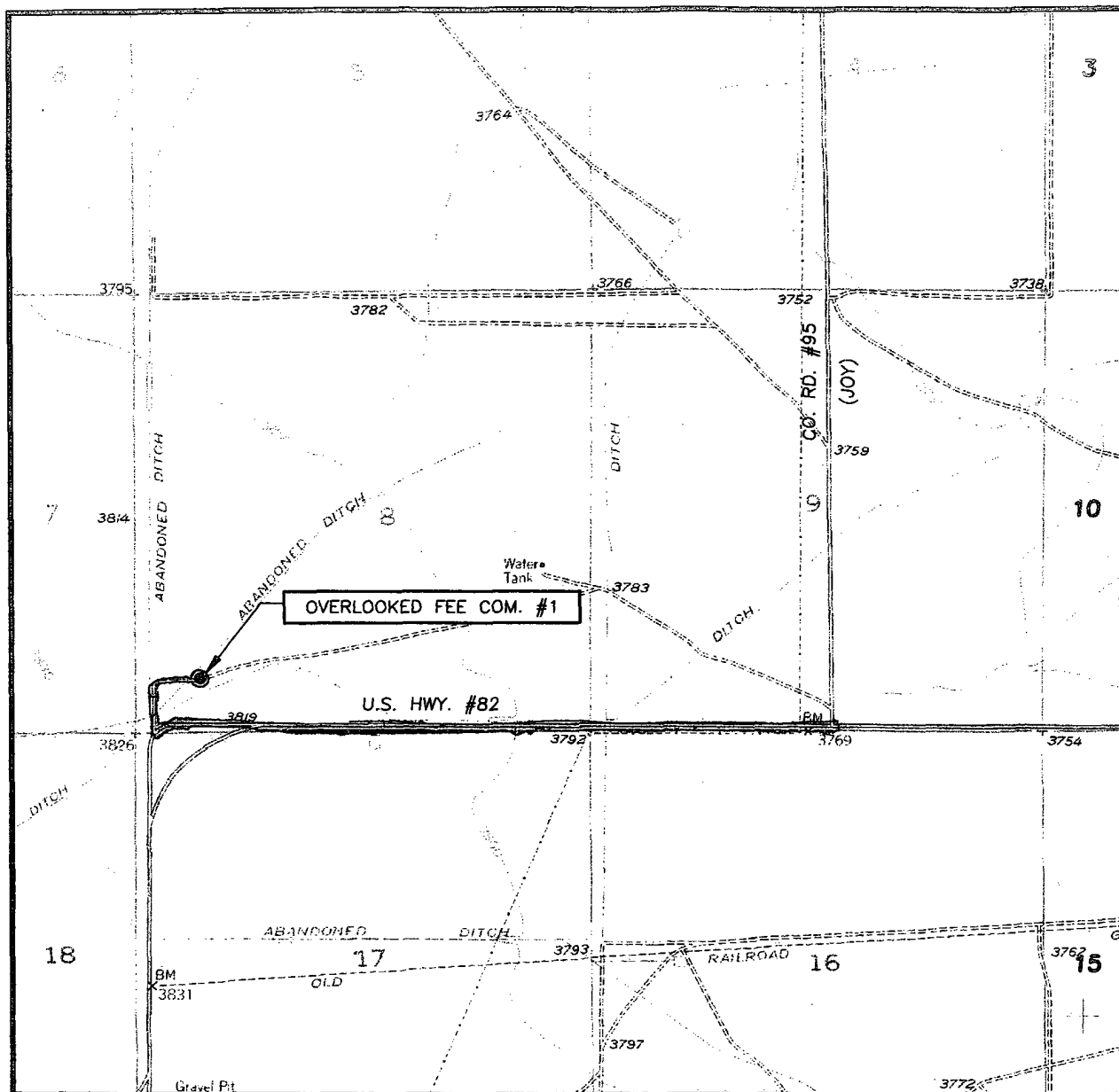
Date Surveyed MR

Signature & Seal of  
Professional Surveyor

*Ronald J. Eidson* 5/16/06  
06.11.0696

Certificate No. GARY EIDSON 12641  
RONALD J. EIDSON 3239

# LOCATION VERIFICATION MAP



SCALE: 1" = 2000'

CONTOUR INTERVAL:  
HOPE SE, N.M. - 10'

SEC. 8 TWP. 17-S RGE. 24-E

SURVEY N.M.P.M.

COUNTY EDDY STATE NEW MEXICO

DESCRIPTION 660' FSL & 760' FWL


ELEVATION 3822'


OPERATOR MARBOB ENERGY CORPORATION

LEASE OVERLOOKED FEE COM.

U.S.G.S. TOPOGRAPHIC MAP

HOPE SE, N.M.

 EXISTING ROADS



PROVIDING SURVEYING SERVICES  
SINCE 1946  
**JOHN WEST SURVEYING COMPANY**  
412 N. DAL PASO  
HOBBS, N.M. 88240  
(505) 393-3117