

District I  
1625 N. French Dr., Hobbs, NM 88240  
Phone: (575) 393-6161 Fax: (575) 393-0720  
District II  
811 S. First St., Artesia, NM 88210  
Phone: (575) 748-1283 Fax: (575) 748-9720  
District III  
1000 Rio Brazos Road, Aztec, NM 87410  
Phone: (505) 334-6178 Fax: (505) 334-6170  
District IV  
1220 S. St. Francis Dr., Santa Fe, NM 87505  
Phone: (505) 476-3460 Fax: (505) 476-3462

State of New Mexico  
Energy, Minerals & Natural Resources  
Department  
OIL CONSERVATION DIVISION  
1220 South St. Francis Dr.  
Santa Fe, NM 87505

FORM C-102

Revised August 1, 2011

Submit one copy to appropriate

District Office

AMENDED REPORT

SEP 19 2019  
DISTRICT II-ARTESIA O.C.D.

WELL LOCATION AND ACREAGE DEDICATION PLAT

<sup>1</sup> API Number 30-015-45557	<sup>2</sup> Pool Code 98220	<sup>3</sup> Pool Name PURPLE SAGE; WOLFCAMP(GAS)
<sup>4</sup> Property Code 321453	<sup>5</sup> Property Name GENERAL KEHOE 02-24S-28E RB	<sup>6</sup> Well Number #217H
<sup>7</sup> GRID No. 228937	<sup>8</sup> Operator Name MATADOR PRODUCTION COMPANY	<sup>9</sup> Elevation 2998'

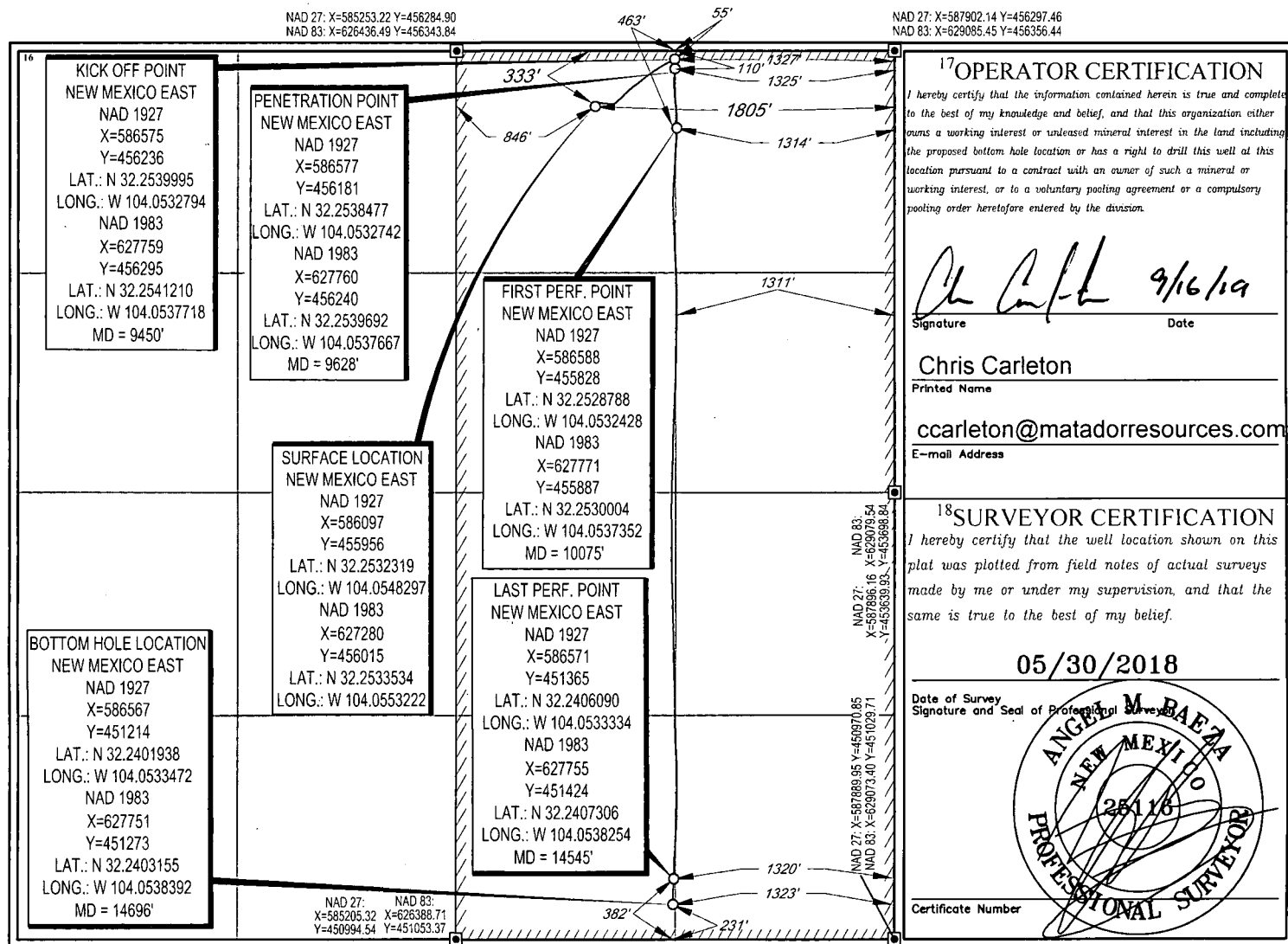
<sup>10</sup>Surface Location

UL or lot no.	Section	Township	Range	Lot Idn	Feet from the	North/South line	Feet from the	East/West line	County
2	2	24-S	28-E	-	333'	NORTH	1805'	EAST	EDDY

UL or lot no.	Section	Township	Range	Lot Idn	Feet from the	North/South line	Feet from the	East/West line	County
0	2	24-S	28-E	-	231'	SOUTH	1323'	EAST	EDDY

<sup>12</sup> Dedicated Acres 319.64	<sup>13</sup> Joint or Infill	<sup>14</sup> Consolidation Code	<sup>15</sup> Order No.
---	-------------------------------	----------------------------------	-------------------------

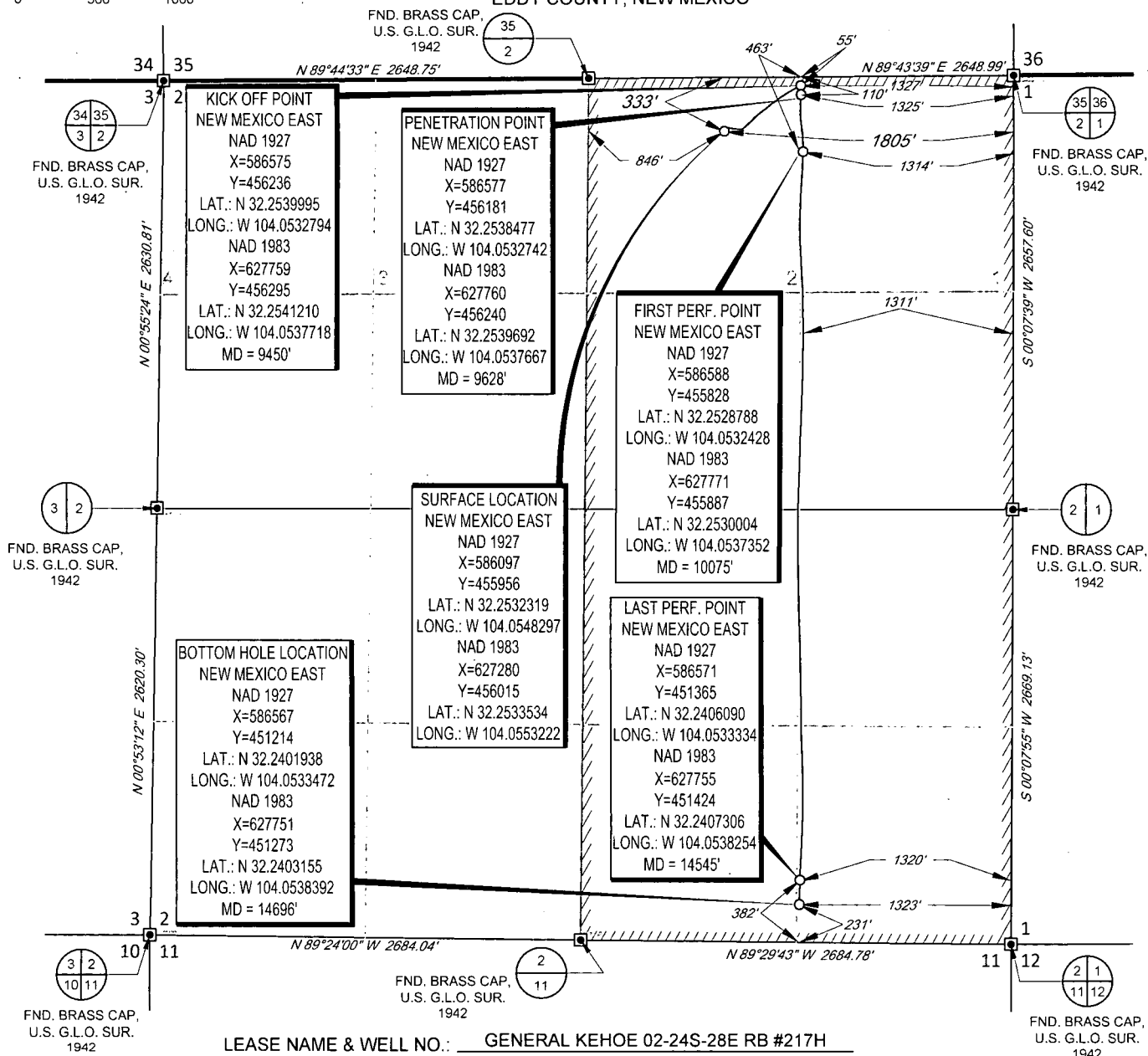
No allowable will be assigned to this completion until all interests have been consolidated or a non-standard unit has been approved by the division.



Rup 10-17-19

SCALE: 1" = 1000'  
0' 500' 1000'

SECTION 2, TOWNSHIP 24-S, RANGE 28-E, N.M.P.M.  
EDDY COUNTY, NEW MEXICO



LEASE NAME & WELL NO.: GENERAL KEHOE 02-24S-28E RB #217H  
SECTION 2 TWP 24-S RGE 28-E SURVEY N.M.P.M.  
COUNTY EDDY STATE NM ELEVATION 2998'  
DESCRIPTION 333' FNL & 1805' FEL



**TOPOGRAPHIC**  
LOYALTY INNOVATION LEGACY

1400 EVERMAN PARKWAY, Ste. 146 • FT. WORTH, TEXAS 76140  
TELEPHONE: (817) 744-7512 • FAX (817) 744-7554  
2903 NORTH BIG SPRING • MIDLAND, TEXAS 79705  
TELEPHONE: (432) 682-1653 OR (800) 767-1653 • FAX (432) 682-1743  
WWW.TOPOGRAPHIC.COM



Angel M. Baeza, P.S. No. 25116  
SEPTEMBER 12, 2019

GENERAL KEHOE 02-24S-28E RB #217H AS-COMPLETED	REVISION:	
	INT	DATE
DATE: 09/12/2019		
FILE: AD_GENERAL_KEHOE_02-24S-28E_RB_217H		
DRAWN BY: AMD		
SHEET: 1 OF 1		

NOTES:

1. ORIGINAL DOCUMENT SIZE: 8.5" X 11"
2. ALL BEARINGS, DISTANCES, AND COORDINATE VALUES CONTAINED HEREIN ARE GRID BASED UPON THE NEW MEXICO COORDINATE SYSTEM OF 1983, EAST ZONE, U.S. SURVEY FEET.
3. THIS WELL LOCATION SHOWN HEREON HAS BEEN SURVEYED ON THE GROUND UNDER MY SUPERVISION AND PREPARED ACCORDING TO THE EVIDENCE FOUND AT THE TIME OF SURVEY, AND DATA PROVIDED BY MATADOR PRODUCTION COMPANY. THIS CERTIFICATION IS MADE AND LIMITED TO THOSE PERSONS OR ENTITIES SHOWN ON THE FACE OF THIS PLAT AND IS NON-TRANSFERABLE. THIS SURVEY IS CERTIFIED FOR THIS TRANSACTION ONLY.