

RECEIVED

DEC 05 2019

FORM APPROVED  
OMB No. 1004-0137  
Expires: January 31, 2018

UNITED STATES  
DEPARTMENT OF THE INTERIOR  
BUREAU OF LAND MANAGEMENT  
DISTRICT/ARTESIA/O.C.D.

APPLICATION FOR PERMIT TO DRILL OR REENTER

1a. Type of work: <input checked="" type="checkbox"/> DRILL <input type="checkbox"/> REENTER		5. Lease Serial No. NMNM138865
1b. Type of Well: <input checked="" type="checkbox"/> Oil Well <input type="checkbox"/> Gas Well <input type="checkbox"/> Other		6. If Indian, Allottee or Tribe Name
1c. Type of Completion: <input type="checkbox"/> Hydraulic Fracturing <input checked="" type="checkbox"/> Single Zone <input type="checkbox"/> Multiple Zone		7. If Unit or CA Agreement, Name and No.
2. Name of Operator MATADOR PRODUCTION COMPANY		8. Lease Name and Well No. BOROS FEDERAL- 124H 326329
3a. Address 5400 LBJ Freeway, Suite 1500 Dallas TX 75240	3b. Phone No. (include area code) (972)371-5200	9. API-Well No. 30-015-46479
4. Location of Well (Report location clearly and in accordance with any State requirements. *) At surface NENE / 400 FNL / 741 FEL / LAT 32.0490457 / LONG -103.759811 At proposed prod. zone SESE / 100 FSL / 660 FEL / LAT 32.0211026 / LONG -103.7595133		10. Field and Pool, or Exploratory 2ND BONE SPRING SHALE
11. Sec., T, R, M, or Blk. and Survey or Area SEC 15 / T26S / R31E / NMP		
14. Distance in miles and direction from nearest town or post office*		12. County or Parish EDDY
13. State NM		
15. Distance from proposed* location to nearest property or lease line, ft. (Also to nearest drig. unit line, if any) 400 feet	16. No of acres in lease 1240	17. Spacing Unit dedicated to this well 320
18. Distance from proposed location* to nearest well, drilling, completed, applied for, on this lease, ft. 30 feet	19. Proposed Depth 9981 feet / 20289 feet	20. BLM/BIA Bond No. in file FED: NMB001079
21. Elevations (Show whether DF, KDB, RT, GL, etc.) 3217 feet	22. Approximate date work will start* 12/01/2019	23. Estimated duration 60 days
24. Attachments		

The following, completed in accordance with the requirements of Onshore Oil and Gas Order No. 1, and the Hydraulic Fracturing rule per 43 CFR 3162.3-3 (as applicable).

- |  |   |
|--|---|
| 1. Well plat certified by a registered surveyor.   | 4. Bond to cover the operations unless covered by an existing bond on file (see Item 20 above). |
| 2. A Drilling Plan.  | 5. Operator certification.  |
| 3. A Surface Use Plan (if the location is on National Forest System Lands, the SUPO must be filed with the appropriate Forest Service Office). | 6. Such other site specific information and/or plans as may be requested by the BLM.            |

25. Signature (Electronic Submission)	Name (Printed/Typed) Lara Thompson / Ph: (505)254-1115	Date 05/14/2019
Title Assistant Project Manager		
Approved by (Signature) (Electronic Submission)	Name (Printed/Typed) Christopher Walls / Ph: (575)234-2234	Date 12/04/2019
Title Petroleum Engineer		
Office CARLSBAD		

Application approval does not warrant or certify that the applicant holds legal or equitable title to those rights in the subject lease which would entitle the applicant to conduct operations thereon.

Conditions of approval, if any, are attached.

Title 18 U.S.C. Section 1001 and Title 43 U.S.C. Section 1212, make it a crime for any person knowingly and willfully to make to any department or agency of the United States any false, fictitious or fraudulent statements or representations as to any matter within its jurisdiction.

APPROVED WITH CONDITIONS

## Review and Appeal Rights

A person contesting a decision shall request a State Director review. This request must be filed within 20 working days of receipt of the Notice with the appropriate State Director (see 43 CFR 3165.3). The State Director review decision may be appealed to the Interior Board of Land Appeals, 801 North Quincy Street, Suite 300, Arlington, VA 22203 (see 43 CFR 3165.4). Contact the above listed Bureau of Land Management office for further information.

## Geologic Conditions of Approval

The operator proposes to set surface casing at 1,431'. This should be below all BLM identified groundwater zones and will likely be an acceptable set point. However the well is in a dissolution feature, making the top of the Rustler difficult to predict, nearby wells suggest the Rustler may be as deep as 1,600'. BLM recommends that because this is an extremely difficult area, a mud logger should be onsite to pick the top of the Rustler. Because the Magenta Dolomite may or may not be present here, setting 25' into the Rustler Formation will be acceptable. If salt is encountered set casing 25' above the salt. The Operator proposes an intermediate casing string set to a depth of 4,180, this will be in the top of the Bell Canyon, which is an acceptable set point. Ensure GR and CNL logs are run from TD to the surface.

CONFIDENTIAL

## PECOS DISTRICT DRILLING CONDITIONS OF APPROVAL

<b>OPERATOR'S NAME:</b>	Matador Production Company
<b>LEASE NO.:</b>	NMNM138885
<b>LOCATION:</b>	Section 15, T.26 S., R.31 E., NMPM
<b>COUNTY:</b>	Eddy County, New Mexico

<b>WELL NAME &amp; NO.:</b>	Boros Federal 104H
<b>SURFACE HOLE FOOTAGE:</b>	430'/N & 820'/E
<b>BOTTOM HOLE FOOTAGE:</b>	100'/S & 990'/E

<b>WELL NAME &amp; NO.:</b>	Boros Federal 124H
<b>SURFACE HOLE FOOTAGE:</b>	400'/N & 741'/E
<b>BOTTOM HOLE FOOTAGE:</b>	100'/S & 660'/E

<b>WELL NAME &amp; NO.:</b>	Boros Federal 134H
<b>SURFACE HOLE FOOTAGE:</b>	430'/N & 630'/E
<b>BOTTOM HOLE FOOTAGE:</b>	100'/S & 660'/E

COA

H2S	<input type="radio"/> Yes	<input checked="" type="radio"/> No	
Potash	<input checked="" type="radio"/> None	<input type="radio"/> Secretary	<input type="radio"/> R-111-P
Cave/Karst Potential	<input type="radio"/> Low	<input checked="" type="radio"/> Medium	<input type="radio"/> High
Cave/Karst Potential	<input type="radio"/> Critical		
Variance	<input type="radio"/> None	<input checked="" type="radio"/> Flex Hose	<input type="radio"/> Other
Wellhead	<input type="radio"/> Conventional	<input type="radio"/> Multibowl	<input checked="" type="radio"/> Both
Other	<input type="checkbox"/> 4 String Area	<input type="checkbox"/> Capitan Reef	<input type="checkbox"/> WIPP
Other	<input type="checkbox"/> Fluid Filled	<input checked="" type="checkbox"/> Cement Squeeze	<input type="checkbox"/> Pilot Hole
Special Requirements	<input type="checkbox"/> Water Disposal	<input type="checkbox"/> COM	<input type="checkbox"/> Unit

### A. HYDROGEN SULFIDE

Hydrogen Sulfide (H2S) monitors shall be installed prior to drilling out the surface shoe. If H2S is detected in concentrations greater than 100 ppm, the Hydrogen Sulfide area shall meet Onshore Order 6 requirements, which includes equipment and personnel/public protection items. If Hydrogen Sulfide is encountered, provide measured values and formations to the BLM.

### B. CASING

#### Casing Design:

1. The **13-3/8** inch surface casing shall be set at approximately **1431** feet (a minimum of **70 feet (Eddy County)** into the Rustler Anhydrite and above the salt) and cemented to the surface.
  - a. If cement does not circulate to the surface, the appropriate BLM office shall be notified and a temperature survey utilizing an electronic type temperature survey with surface log readout will be used or a cement bond log shall be run to verify the top of the cement. Temperature survey will be run a minimum of six hours after pumping cement and ideally between 8-10 hours after completing the cement job.
  - b. Wait on cement (WOC) time for a primary cement job will be a minimum of **8 hours** or 500 pounds compressive strength, whichever is greater. (This is to include the lead cement)
  - c. Wait on cement (WOC) time for a remedial job will be a minimum of 4 hours after bringing cement to surface or 500 pounds compressive strength, whichever is greater.
  - d. If cement falls back, remedial cementing will be done prior to drilling out that string.
2. The **9-5/8** inch intermediate casing shall be set at approximately **4180** feet. The minimum required fill of cement behind the **9-5/8** inch intermediate casing is:

**Option 1 (Single Stage):**

- Cement to surface. If cement does not circulate see B.1.a, c-d above.  
**Wait on cement (WOC) time for a primary cement job is to include the lead cement slurry due to cave/karst or potash.**

**Option 2:**

Operator has proposed a DV tool, the depth may be adjusted as long as the cement is changed proportionally. The DV tool may be cancelled if cement circulates to surface on the first stage.

- a. First stage to DV tool: Cement to circulate. If cement does not circulate off the DV tool, contact the appropriate BLM office before proceeding with second stage cement job.
- b. Second stage above DV tool:
  - Cement to surface. If cement does not circulate, contact the appropriate BLM office.  
**Wait on cement (WOC) time for a primary cement job is to include the lead cement slurry due to cave/karst or potash.**

- ❖ In **Medium Cave/Karst Areas** if cement does not circulate to surface on the first two casing strings, the cement on the 3rd casing string must come to surface.

3. The minimum required fill of cement behind the 5-1/2 inch production casing is:

**Option 1 (Single Stage):**

- Cement should tie-back at least **200 feet** into previous casing string. Operator shall provide method of verification.

**Option 2:**

Operator has proposed a DV tool, the depth may be adjusted as long as the cement is changed proportionally. The DV tool may be cancelled if cement circulates to surface on the first stage.

- a. First stage to DV tool: Cement to circulate. If cement does not circulate off the DV tool, contact the appropriate BLM office before proceeding with second stage cement job.
- b. Second stage above DV tool:
  - Cement should tie-back at least **200 feet** into previous casing string. Operator shall provide method of verification.

**C. PRESSURE CONTROL**

1. Variance approved to use flex line from BOP to choke manifold. Manufacturer's specification to be readily available. No external damage to flex line. Flex line to be installed as straight as possible (no hard bends).'
- 2.

**Option 1:**

- a. Minimum working pressure of the blowout preventer (BOP) and related equipment (BOPE) required for drilling below the surface casing shoe shall be **3000 (3M)** psi.
- b. Minimum working pressure of the blowout preventer (BOP) and related equipment (BOPE) required for drilling below the intermediate casing shoe shall be **5000 (5M)** psi.

**Option 2:**

1. Operator has proposed a multi-bowl wellhead assembly. This assembly will only be tested when installed on the surface casing. Minimum working pressure of the blowout preventer (BOP) and related equipment (BOPE) required for drilling below the surface casing shoe shall be **5000 (5M)** psi.
  - a. Wellhead shall be installed by manufacturer's representatives, submit documentation with subsequent sundry.
  - b. If the welding is performed by a third party, the manufacturer's representative shall monitor the temperature to verify that it does not exceed the maximum temperature of the seal.
  - c. Manufacturer representative shall install the test plug for the initial BOP test.
  - d. If the cement does not circulate and one inch operations would have been possible with a standard wellhead, the well head shall be cut off, cementing operations performed and another wellhead installed.
  - e. Whenever any seal subject to test pressure is broken, all the tests in OOGO2.III.A.2.i must be followed.

## GENERAL REQUIREMENTS

The BLM is to be notified in advance for a representative to witness:

- a. Spudding well (minimum of 24 hours)
- b. Setting and/or Cementing of all casing strings (minimum of 4 hours)
- c. BOPE tests (minimum of 4 hours)

☒ Eddy County

Call the Carlsbad Field Office, 620 East Greene St., Carlsbad, NM 88220,  
(575) 361-2822

☒ Lea County

Call the Hobbs Field Station, 414 West Taylor, Hobbs NM 88240, (575)  
393-3612

1. Unless the production casing has been run and cemented or the well has been properly plugged, the drilling rig shall not be removed from over the hole without prior approval.
  - a. In the event the operator has proposed to drill multiple wells utilizing a skid/walking rig. Operator shall secure the wellbore on the current well, after installing and testing the wellhead, by installing a blind flange of like pressure rating to the wellhead and a pressure gauge that can be monitored while drilling is performed on the other well(s).
  - b. When the operator proposes to set surface casing with Spudder Rig
    - Notify the BLM when moving in and removing the Spudder Rig.
    - Notify the BLM when moving in the 2<sup>nd</sup> Rig. Rig to be moved in within 90 days of notification that Spudder Rig has left the location.
    - BOP/BOPE test to be conducted per Onshore Oil and Gas Order No. 2 as soon as 2nd Rig is rigged up on well.
2. Floor controls are required for 3M or Greater systems. These controls will be on the rig floor, unobstructed, readily accessible to the driller and will be operational at all times during drilling and/or completion activities. Rig floor is defined as the area immediately around the rotary table; the area immediately above the substructure on which the draw works are located, this does not include the dog house or stairway area.
3. The record of the drilling rate along with the GR/N well log run from TD to surface (horizontal well – vertical portion of hole) shall be submitted to the BLM office as well as all other logs run on the borehole 30 days from completion. If available, a digital copy of the logs is to be submitted in addition to the paper copies. The Rustler top and top and bottom of Salt are to be recorded on the Completion Report.

A. CASING

1. Changes to the approved APD casing program need prior approval if the items substituted are of lesser grade or different casing size or are Non-API. The Operator can exchange the components of the proposal with that of superior strength (i.e. changing from J-55 to N-80, or from 36# to 40#). Changes to the approved cement program need prior approval if the altered cement plan has less volume or strength or if the changes are substantial (i.e. Multistage tool, ECP, etc.). The initial wellhead installed on the well will remain on the well with spools used as needed.
2. Wait on cement (WOC) for Potash Areas: After cementing but before commencing any tests, the casing string shall stand cemented under pressure until both of the following conditions have been met: 1) cement reaches a minimum compressive strength of 500 psi for all cement blends, 2) until cement has been in place at least 24 hours. WOC time will be recorded in the driller's log. The casing integrity test can be done (prior to the cement setting up) immediately after bumping the plug.
3. Wait on cement (WOC) for Water Basin: After cementing but before commencing any tests, the casing string shall stand cemented under pressure until both of the following conditions have been met: 1) cement reaches a minimum compressive strength of 500 psi at the shoe, 2) until cement has been in place at least 8 hours. WOC time will be recorded in the driller's log. See individual casing strings for details regarding lead cement slurry requirements. The casing integrity test can be done (prior to the cement setting up) immediately after bumping the plug.
4. Provide compressive strengths including hours to reach required 500 pounds compressive strength prior to cementing each casing string. Have well specific cement details onsite prior to pumping the cement for each casing string.
5. No pea gravel permitted for remedial or fall back remedial without prior authorization from the BLM engineer.
6. On that portion of any well approved for a 5M BOPE system or greater, a pressure integrity test of each casing shoe shall be performed. Formation at the shoe shall be tested to a minimum of the mud weight equivalent anticipated to control the formation pressure to the next casing depth or at total depth of the well. This test shall be performed before drilling more than 20 feet of new hole.
7. If hardband drill pipe is rotated inside casing, returns will be monitored for metal. If metal is found in samples, drill pipe will be pulled and rubber protectors which have a larger diameter than the tool joints of the drill pipe will be installed prior to continuing drilling operations.
8. Whenever a casing string is cemented in the R-111-P potash area, the NMOCD requirements shall be followed.



**B. PRESSURE CONTROL**

1. All blowout preventer (BOP) and related equipment (BOPE) shall comply with well control requirements as described in Onshore Oil and Gas Order No. 2 and API RP 53 Sec. 17.
2. If a variance is approved for a flexible hose to be installed from the BOP to the choke manifold, the following requirements apply: The flex line must meet the requirements of API 16C. Check condition of flexible line from BOP to choke manifold, replace if exterior is damaged or if line fails test. Line to be as straight as possible with no hard bends and is to be anchored according to Manufacturer's requirements. The flexible hose can be exchanged with a hose of equal size and equal or greater pressure rating. Anchor requirements, specification sheet and hydrostatic pressure test certification matching the hose in service, to be onsite for review. These documents shall be posted in the company man's trailer and on the rig floor.
3. 5M or higher system requires an HCR valve, remote kill line and annular to match. The remote kill line is to be installed prior to testing the system and tested to stack pressure.
4. If the operator has proposed a multi-bowl wellhead assembly in the APD. The following requirements must be met:
  - a. Wellhead shall be installed by manufacturer's representatives, submit documentation with subsequent sundry.
  - b. If the welding is performed by a third party, the manufacturer's representative shall monitor the temperature to verify that it does not exceed the maximum temperature of the seal.
  - c. Manufacturer representative shall install the test plug for the initial BOP test.
  - d. Whenever any seal subject to test pressure is broken, all the tests in OOGO2.III.A.2.i must be followed.
  - e. If the cement does not circulate and one inch operations would have been possible with a standard wellhead, the well head shall be cut off, cementing operations performed and another wellhead installed.
5. The appropriate BLM office shall be notified a minimum of 4 hours in advance for a representative to witness the tests.
  - a. In a water basin, for all casing strings utilizing slips, these are to be set as soon as the crew and rig are ready and any fallback cement remediation has been done. The casing cut-off and BOP installation can be initiated four hours after installing the slips, which will be approximately six hours after bumping the plug. For those casing strings not using slips, the minimum wait time before cut-off is eight hours after bumping the plug. BOP/BOPE testing can begin after cut-off or once cement reaches 500 psi compressive strength (including

lead when specified), whichever is greater. However, if the float does not hold, cut-off cannot be initiated until cement reaches 500 psi compressive strength (including lead when specified).

- b. In potash areas, for all casing strings utilizing slips, these are to be set as soon as the crew and rig are ready and any fallback cement remediation has been done. For all casing strings, casing cut-off and BOP installation can be initiated at twelve hours after bumping the plug. However, **no tests** shall commence until the cement has had a minimum of 24 hours setup time, except the casing pressure test can be initiated immediately after bumping the plug (only applies to single stage cement jobs).
- c. The tests shall be done by an independent service company utilizing a test plug not a cup or J-packer. The operator also has the option of utilizing an independent tester to test without a plug (i.e. against the casing) pursuant to Onshore Order 2 with the pressure not to exceed 70% of the burst rating for the casing. Any test against the casing must meet the WOC time for water basin (8 hours) or potash (24 hours) or 500 pounds compressive strength, whichever is greater, prior to initiating the test (see casing segment as lead cement may be critical item).
- d. The test shall be run on a 5000 psi chart for a 2-3M BOP/BOP, on a 10000 psi chart for a 5M BOP/BOPE and on a 15000 psi chart for a 10M BOP/BOPE. If a linear chart is used, it shall be a one hour chart. A circular chart shall have a maximum 2 hour clock. If a twelve hour or twenty-four hour chart is used, tester shall make a notation that it is run with a two hour clock.
- e. The results of the test shall be reported to the appropriate BLM office.
- f. All tests are required to be recorded on a calibrated test chart. A copy of the BOP/BOPE test chart and a copy of independent service company test will be submitted to the appropriate BLM office.
- g. The BOP/BOPE test shall include a low pressure test from 250 to 300 psi. The test will be held for a minimum of 10 minutes if test is done with a test plug and 30 minutes without a test plug. This test shall be performed prior to the test at full stack pressure.
- h. BOP/BOPE must be tested by an independent service company within 500 feet of the top of the Wolfcamp formation if the time between the setting of the intermediate casing and reaching this depth exceeds 20 days. This test does not exclude the test prior to drilling out the casing shoe as per Onshore Order No. 2.

**C. DRILLING MUD**

Mud system monitoring equipment, with derrick floor indicators and visual and audio alarms, shall be operating before drilling into the Wolfcamp formation, and shall be used until production casing is run and cemented.

**D. WASTE MATERIAL AND FLUIDS**

All waste (i.e. drilling fluids, trash, salts, chemicals, sewage, gray water, etc.) created as a result of drilling operations and completion operations shall be safely contained and disposed of properly at a waste disposal facility. No waste material or fluid shall be disposed of on the well location or surrounding area.

Porto-johns and trash containers will be on-location during fracturing operations or any other crew-intensive operations.

**NMK11032019**

**PECOS DISTRICT  
SURFACE USE  
CONDITIONS OF APPROVAL**

**Environmental Assessment DOI-BLM-NM-P020-2020-0098-EA**

**Matador Production Company,  
Boros Fed Com Slots 1-4  
Oil Wells Project in  
Eddy County, New Mexico  
BLM Lease Number: NMNM-140693**

<b>Project Features</b>	<b>Legal Location within Section 15, Township 26 South, Range 31 East, NMPM</b>
<b>Well Number</b>	<b>Surface Hole Location</b>
<b>Boros Fed Com Slot 1</b>	
021H	400 FNL, and 100 FSL
101H	430 FNL, and 514 FWL
105H	430 FNL and 624 FWL
111H	430 FNL and 594 FWL
121H	400 FNL and 594 FWL
131H	430 FNL and 704 FWL
201H	430 FNL and 484 FWL
215H	400 FNL and 514 FWL
221H	400 FNL and 484 FWL
225H	430 FNL and 734 FWL
241H	400 FNL and 704 FWL
<b>Boros Fed Com Slot 2</b>	
022H	400 FNL and 1,960 FWL
102H	430 FNL and 1,850 FWL
106H	430 FNL and 1,960 FWL
112H	430 FNL and 1,930 FWL
122H	400 FNL and 1,930 FWL
132H	430 FNL and 2,040 FWL
202H	430 FNL and 1,820 FWL

216H	400 FNL and 1,850 FWL
222H	400 FNL and 1,820 FWL
226H	430 FNL and 2,070 FWL
242H	400 FNL and 2,040 FWL
<b>Boros Fed Com Slot 3</b>	
023H	400 FNL and 2,294 FEL
103H	430 FNL and 2,403 FEL
107H	430 FNL and 2,293 FEL
113H	430 FNL and 2,323 FEL
123H	400 FNL and 2,324 FEL
133H	430 FNL and 2,213 FEL
<b>Project Features</b>	<b>Legal Location within Section 15, Township 26 South, Range 31 East, NMPM</b>
203H	430 FNL and 2,434 FEL
217H	400 FNL and 2,404 FEL
223H	400 FNL and 2,434 FEL
227H	430 FNL and 2,183 FEL
243H	400 FNL and 2,214 FEL
<b>Boros Fed Com Slot 4</b>	
024H	400 FNL and 711 FEL
104H	430 FNL and 820 FEL
108H	430 FNL and 710 FEL
114H	430 FNL and 740 FEL
124H	400 FNL and 741 FEL
134H	430 FNL and 630 FEL
204H	430 FNL and 851 FEL
218H	400 FNL and 821 FEL
224H	400 FNL and 851 FEL
228H	430 FNL and 600 FEL
244H	400 FNL and 631 FEL

## TABLE OF CONTENTS

Standard Conditions of Approval (COA) apply to this APD. If any deviations to these standards exist or special COAs are required, the section with the deviation or requirement will be checked below.

- ☐ **General Provisions**
- ☐ **Permit Expiration**
- ☐ **Archaeology, Paleontology, and Historical Sites**
- ☐ **Noxious Weeds**
- ☒ **Special Requirements**
  - Wildlife: Phantom Banks Heronry SMA**
  - Watershed
  - Cave/Karst
  - VRM
- ☐ **Construction**
  - Notification
  - Topsoil
  - Closed Loop System
  - Federal Mineral Material Pits
  - Well Pads
  - Roads
- ☐ **Road Section Diagram**
- ☒ **Production (Post Drilling)**
  - Well Structures & Facilities
  - Pipelines
  - Electric Lines
- ☐ **Interim Reclamation**
- ☐ **Final Abandonment & Reclamation**



U.S. Department of the Interior  
BUREAU OF LAND MANAGEMENT

## Application Data Report

12/04/2019

APD ID: 10400041808

Submission Date: 05/14/2019

Highlighted data  
reflects the most  
recent changes

Operator Name: MATADOR PRODUCTION COMPANY

Well Name: BOROS FEDERAL

Well Number: 124H

[Show Final Text](#)

Well Type: OIL WELL

Well Work Type: Drill

### Section 1 - General

APD ID: 10400041808

Tie to previous NOS?

Submission Date: 05/14/2019

BLM Office: CARLSBAD

User: Lara Thompson

Title: Assistant Project Manager

Federal/Indian APD: FED

Is the first lease penetrated for production Federal or Indian? FED

Lease number: NMNM138865

Lease Acres: 1240

Surface access agreement in place?

Allotted?

Reservation:

Agreement in place? NO

Federal or Indian agreement:

Agreement number:

Agreement name:

Keep application confidential? YES

Permitting Agent? YES

APD Operator: MATADOR PRODUCTION COMPANY

Operator letter of designation:

### Operator Info

Operator Organization Name: MATADOR PRODUCTION COMPANY

Operator Address: 5400 LBJ Freeway, Suite 1500

Zip: 75240

Operator PO Box:

Operator City: Dallas

State: TX

Operator Phone: (972)371-5200

Operator Internet Address: amonroe@matadorresources.com

### Section 2 - Well Information

Well in Master Development Plan? NO

Master Development Plan name:

Well in Master SUPO? EXISTING

Master SUPO name: Boros Federal Well Project

Well in Master Drilling Plan? NO

Master Drilling Plan name:

Well Name: BOROS FEDERAL

Well Number: 124H

Well API Number:

Field/Pool or Exploratory? Field and Pool

Field Name: 2ND BONE  
SPRING SHALE

Pool Name:

Is the proposed well in an area containing other mineral resources? NATURAL GAS,OIL

**Operator Name:** MATADOR PRODUCTION COMPANY

**Well Name:** BOROS FEDERAL

**Well Number:** 124H

**Is the proposed well in an area containing other mineral resources?** NATURAL GAS,OIL

**Is the proposed well in a Helium production area?** N **Use Existing Well Pad?** NO **New surface disturbance?**

**Type of Well Pad:** MULTIPLE WELL

**Multiple Well Pad Name:** SLOT **Number:** 11

**Well Class:** HORIZONTAL

**Number of Legs:** 1

**Well Work Type:** Drill

**Well Type:** OIL WELL

**Describe Well Type:**

**Well sub-Type:** APPRAISAL

**Describe sub-type:**

**Distance to town:**

**Distance to nearest well:** 30 FT

**Distance to lease line:** 400 FT

**Reservoir well spacing assigned acres Measurement:** 320 Acres

**Well plat:** Matador\_BorosFed\_124H\_20190513114544.pdf

**Well work start Date:** 12/01/2019

**Duration:** 60 DAYS

### Section 3 - Well Location Table

**Survey Type:** RECTANGULAR

**Describe Survey Type:**

**Datum:** NAD83

**Vertical Datum:** NAVD88

**Survey number:**

**Reference Datum:**

Wellbore	NS-Foot	NS Indicator	EW-Foot	EW Indicator	Twsp	Range	Section	Aliquot/Lot/Tract	Latitude	Longitude	County	State	Meridian	Lease Type	Lease Number	Elevation	MD	TVD	Will this well produce
SHL Leg #1	400	FNL	741	FEL	26S	31E	15	Aliquot NENE	32.04904 57	- 103.7598 11	EDD Y	NEW MEXI CO	NEW MEXI CO	F	NMNM 138865	321 7	0	0	
KOP Leg #1	400	FNL	741	FEL	26S	31E	15	Aliquot NENE	32.04904 57	- 103.7598 11	EDD Y	NEW MEXI CO	NEW MEXI CO	F	NMNM 138865	- 619 1	943 1	940 8	
PPP Leg #1-1	400	FNL	741	FEL	26S	31E	15	Aliquot NENE	32.04987 09	- 103.7595 476	EDD Y	NEW MEXI CO	NEW MEXI CO	F	NMNM 138865	- 676 4	103 31	998 1	



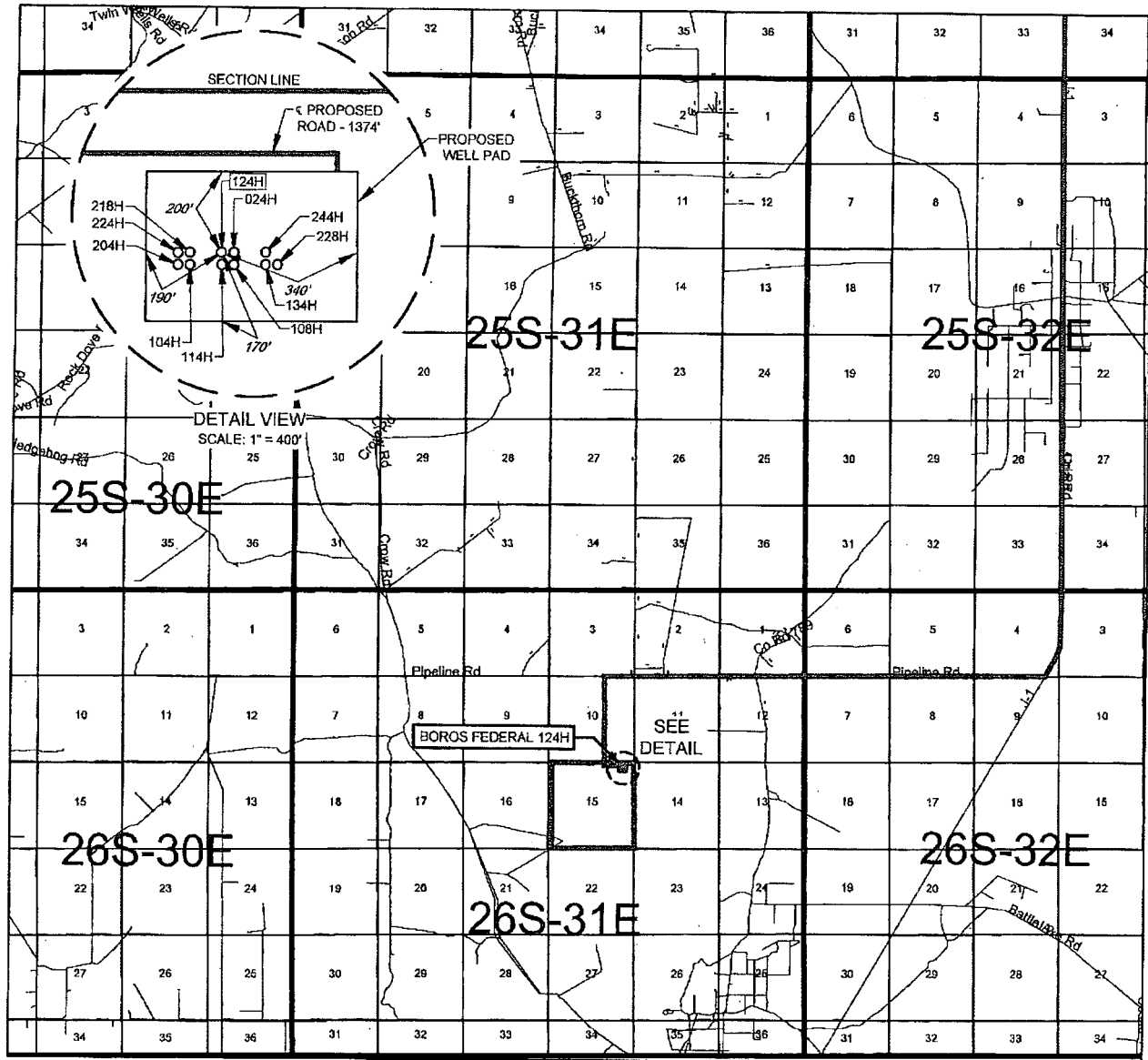
**Operator Name:** MATADOR PRODUCTION COMPANY

**Well Name:** BOROS FEDERAL

**Well Number:** 124H

Wellbore	NS-Foot	NS Indicator	EW-Foot	EW Indicator	Twsp	Range	Section	Aliquot/Lot/Tract	Latitude	Longitude	County	State	Meridian	Lease Type	Lease Number	Elevation	MD	TVD	Will this well produce
EXIT Leg #1	100	FSL	660	FEL	26S	31E	22	Aliquot SESE	32.02110 26	- 103.7595 133	EDD Y	NEW, MEXI CO	NEW MEXI CO	F	NMNM 138865	- 676 4	202 89	998 1	
BHL Leg #1	100	FSL	660	FEL	26S	31E	22	Aliquot SESE	32.02110 26	- 103.7595 133	EDD Y	NEW MEXI CO	NEW MEXI CO	F	NMNM 138865	- 676 4	202 89	998 1	

# VICINITY MAP



LEASE NAME & WELL NO.: BOROS FEDERAL 124H

SECTION 15 TWP 26-S RGE 31-E SURVEY N.M.P.M.  
 COUNTY EDDY STATE NM  
 DESCRIPTION 400' FNL & 741' FEL

## DISTANCE & DIRECTION

FROM INT. OF NM128, & J-1/ORLA RD. GO SOUTH ON J-1/ORLA RD. ±13.2 MILES THENCE WEST (RIGHT) ON PIPELINE RD ±5.2 MILES, THENCE SOUTH (LEFT) ON PROPOSED RD. ±1.0 MILES, THENCE EAST (LEFT) ON PROPOSED RD. ±1374 FEET, TO A POINT ±198 FEET NORTHEAST OF THE LOCATION.

THIS EASEMENT/SERVITUDE LOCATION SHOWN HEREON HAS BEEN SURVEYED ON THE GROUND UNDER MY SUPERVISION AND PREPARED ACCORDING TO THE EVIDENCE FOUND AT THE TIME OF SURVEY, AND DATA PROVIDED BY MATADOR PRODUCTION COMPANY. THIS CERTIFICATION IS MADE AND LIMITED TO THOSE PERSONS OR ENTITIES SHOWN ON THE FACE OF THIS PLAT AND IS NON-TRANSFERABLE. THIS SURVEY IS CERTIFIED FOR THIS TRANSACTION ONLY.

ALL BEARINGS, DISTANCES, AND COORDINATE VALUES CONTAINED HEREON ARE GRID BASED UPON THE NEW MEXICO COORDINATE SYSTEM OF 1983, EAST ZONE, U.S. SURVEY FEET.



SCALE: 1" = 10000'  
 0' 5000' 10000'



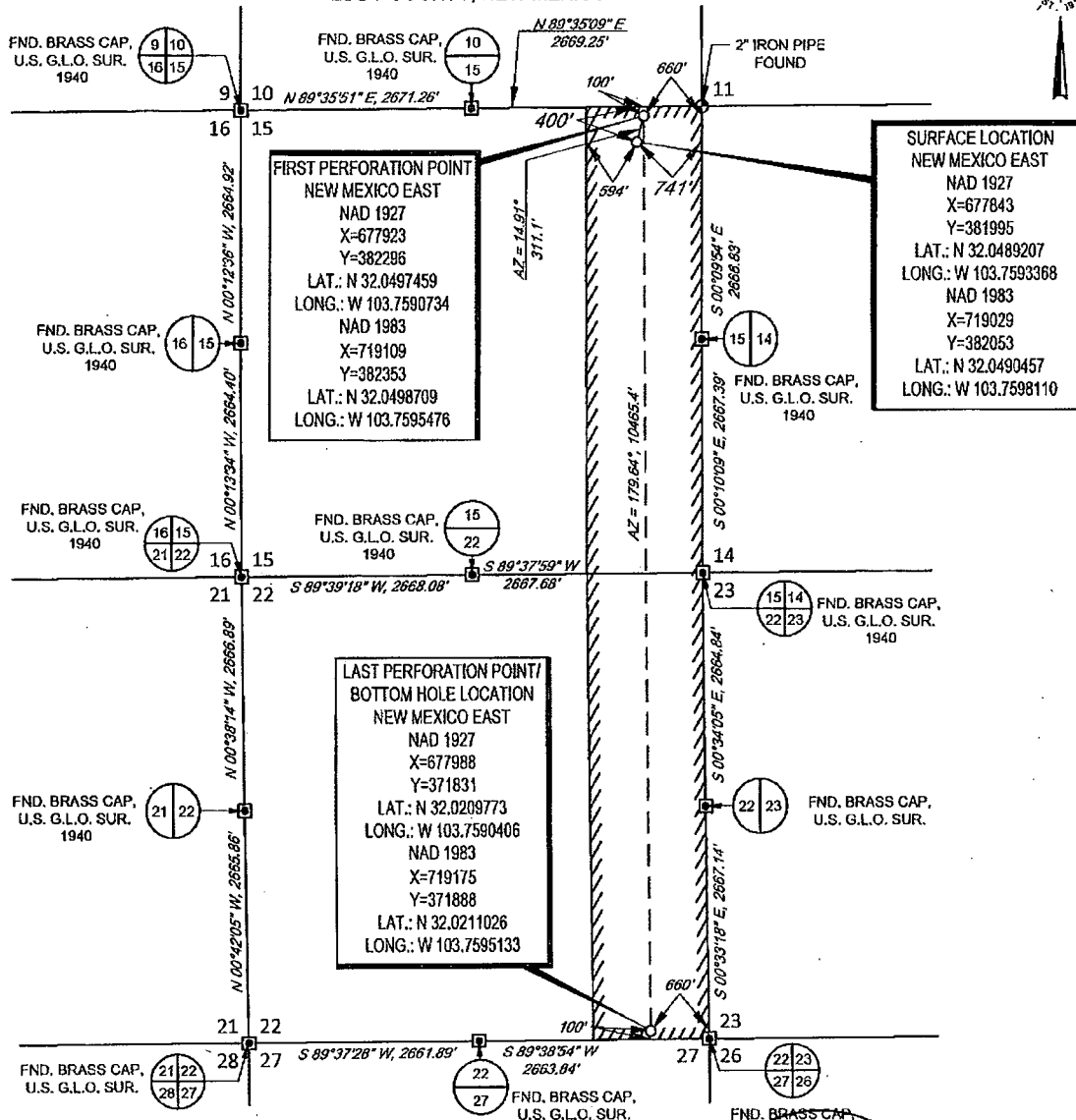
**TOPOGRAPHIC**  
 LOYALTY INNOVATION LEGACY

1400 EVERMAN PARKWAY, Ste. 146 • FT. WORTH, TEXAS 76140  
 TELEPHONE: (817) 744-7512 • FAX: (817) 744-7554  
 2903 NORTH BIG SPRING • MIDLAND, TEXAS 79705  
 TELEPHONE: (432) 682-1653 OR (800) 787-1653 • FAX: (432) 682-1743  
 WWW.TOPOGRAPHIC.COM

SCALE: 1" = 2000'  
0' 1000' 2000'



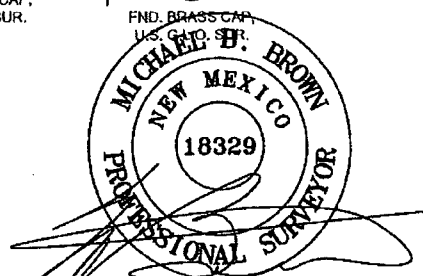
SECTION 15, TOWNSHIP 26-S, RANGE 31-E, N.M.P.M.  
EDDY COUNTY, NEW MEXICO



LEASE NAME & WELL NO.: BOROS FEDERAL 124H  
SECTION 15 TWP 26-S RGE 31-E SURVEY N.M.P.M.  
COUNTY EDDY STATE NM  
DESCRIPTION 400' FNL & 741' FEL

DISTANCE & DIRECTION  
FROM INT. OF NM128 & J-1/ORLA RD. GO SOUTH ON J-1/ORLA RD.  
±13.2 MILES, THENCE WEST (RIGHT) ON PIPELINE RD ±5.2 MILES,  
THENCE SOUTH (LEFT) ON PROPOSED RD. ±1.0 MILES, THENCE EAST  
(LEFT) ON PROPOSED RD. ±1374 FEET, TO A POINT ±198 FEET  
NORTHEAST OF THE LOCATION.

ALL BEARINGS, DISTANCES, AND COORDINATE VALUES CONTAINED HEREON ARE GRID BASED UPON THE NEW MEXICO COORDINATE SYSTEM OF 1983, EAST ZONE, U.S. SURVEY FEET  
THIS EASEMENT/SERVITUDE LOCATION SHOWN HEREON HAS BEEN SURVEYED ON THE GROUND UNDER MY SUPERVISION AND PREPARED ACCORDING TO THE EVIDENCE FOUND AT THE TIME OF SURVEY, AND DATA PROVIDED BY MATADOR PRODUCTION COMPANY. THIS CERTIFICATION IS MADE AND LIMITED TO THOSE PERSONS OR ENTITIES SHOWN ON THE FACE OF THIS PLAT AND IS NON-TRANSFERABLE. THIS SURVEY IS CERTIFIED FOR THIS TRANSACTION ONLY.  
AS OF THE DATE OF SURVEY, ALL ABOVE GROUND APPURTENANCES WITHIN 300' OF THE STAKED LOCATION ARE SHOWN HEREON.



Michael Blake Brown, P.S. No. 18329

MARCH 4, 2019



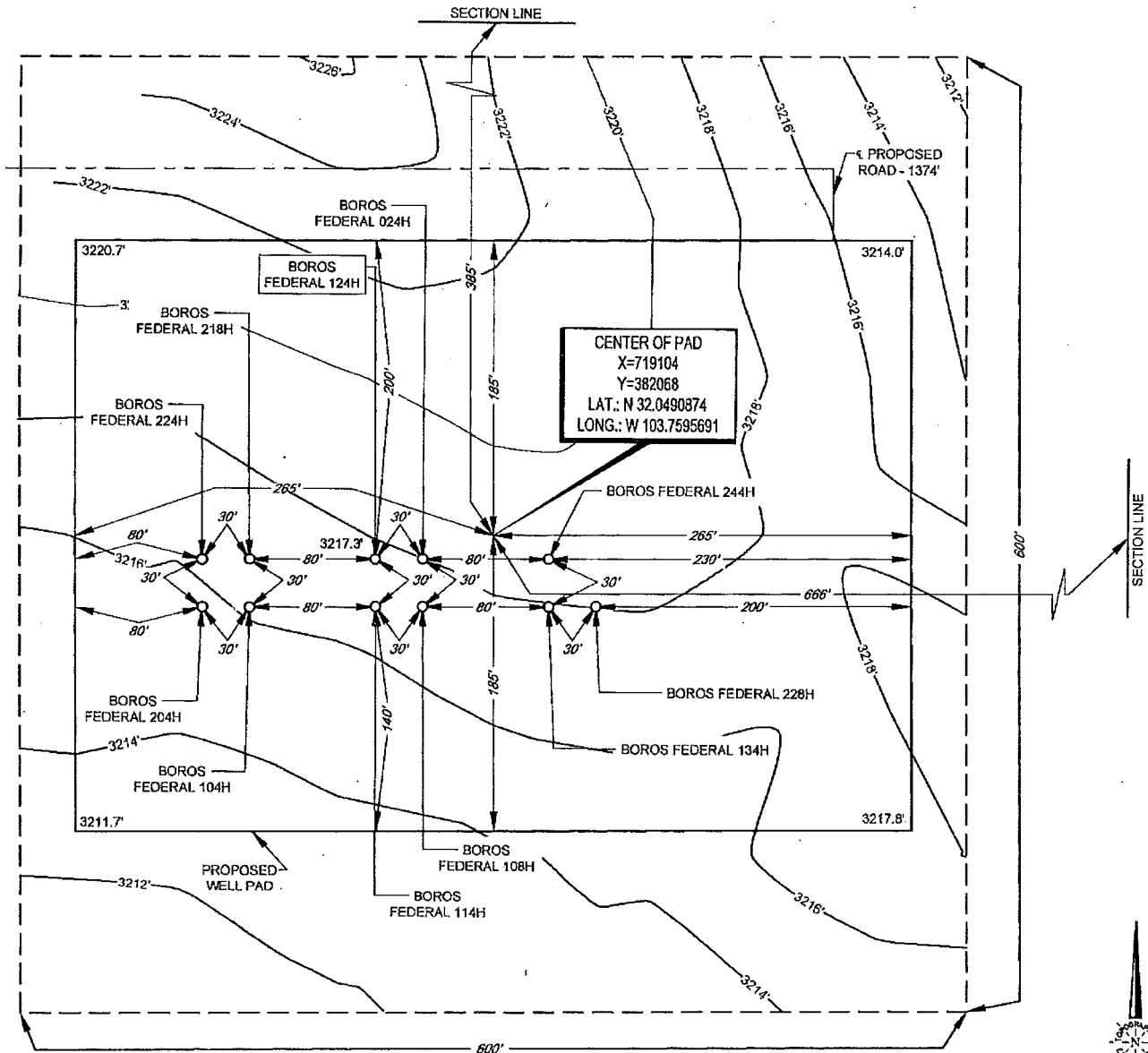
**TOPOGRAPHIC**  
LOYALTY INNOVATION LEGACY

1400 EVERMAN PARKWAY, Ste. 146 • FT. WORTH, TEXAS 76140  
TELEPHONE: (817) 744-7512 • FAX (817) 744-7554  
2603 NORTH BIG SPRING • MIDLAND, TEXAS 79705  
TELEPHONE: (432) 682-1653 OR (800) 767-1653 • FAX (432) 682-1743  
WWW.TOPOGRAPHIC.COM



SECTION 15, TOWNSHIP 26-S, RANGE 31-E, N.M.P.M.  
EDDY COUNTY, NEW MEXICO

DETAIL VIEW  
SCALE: 1" = 100'



LEASE NAME & WELL NO.: BOROS FEDERAL 124H  
124H LATITUDE N 32.0490457 124H LONGITUDE W 103.7598110

#### LEGEND

- SECTION LINE
- - - PROPOSED ROAD

ALL BEARINGS, DISTANCES, AND COORDINATE VALUES CONTAINED HEREON ARE GRID BASED UPON THE NEW MEXICO COORDINATE SYSTEM OF 1983, EAST ZONE, U.S. SURVEY FEET

THIS PROPOSED PAD SITE LOCATION SHOWN HEREON HAS BEEN SURVEYED ON THE GROUND UNDER MY SUPERVISION AND PREPARED ACCORDING TO THE EVIDENCE FOUND AT THE TIME OF SURVEY, AND DATA PROVIDED BY MATADOR PRODUCTION COMPANY. THIS CERTIFICATION IS MADE AND LIMITED TO THOSE PERSONS OR ENTITIES SHOWN ON THE FACE OF THIS PLAT AND IS NON-TRANSFERABLE. THIS SURVEY IS CERTIFIED FOR THIS TRANSACTION ONLY.

ORIGINAL DOCUMENT SIZE: 8.5" X 11"

CENTER OF PAD IS 385' FNL & 666' FEL

SCALE: 1" = 100'  
0' 50' 100'



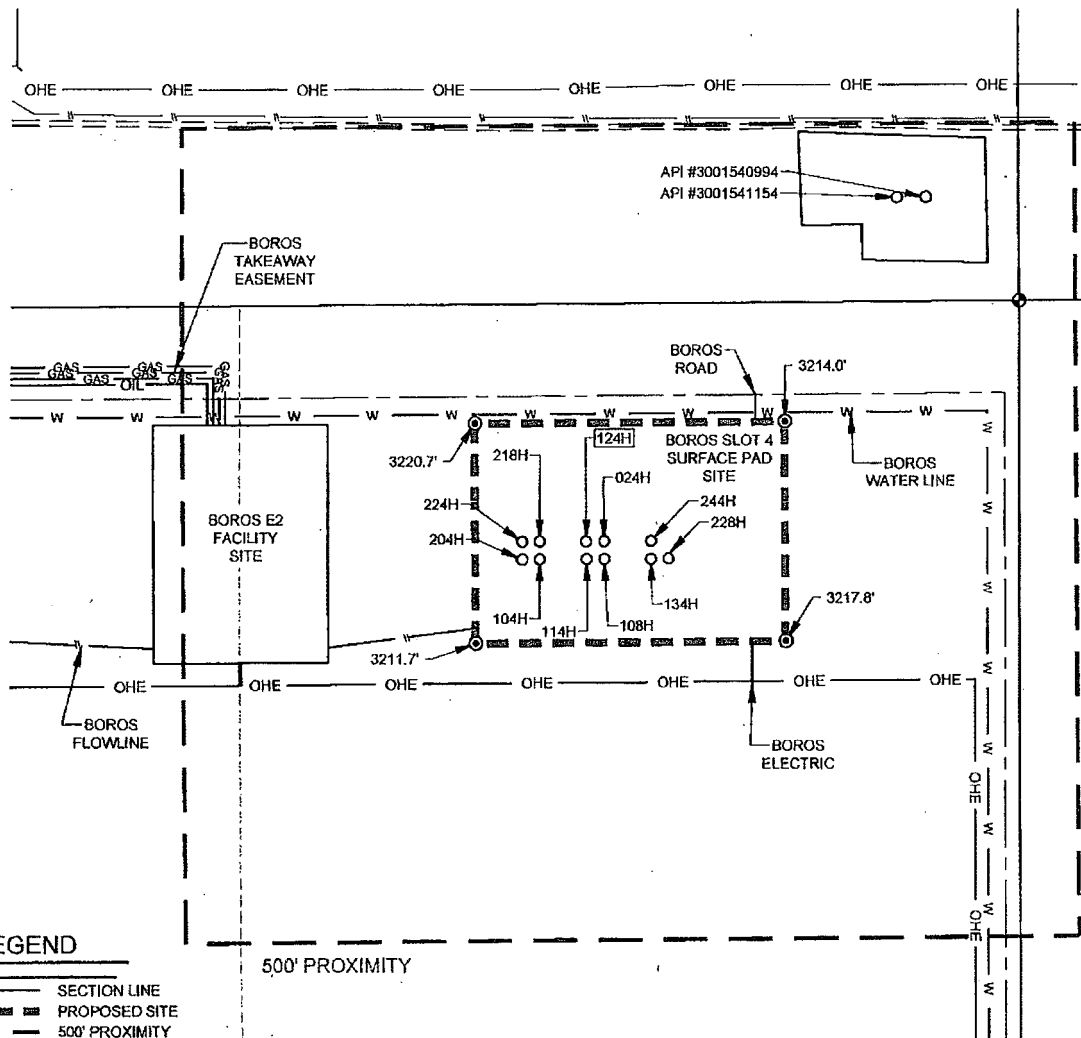
**TOPOGRAPHIC**  
LOYALTY INNOVATION LEGACY

1400 EVERMAN PARKWAY, Ste. 148 • FT. WORTH, TEXAS 76140  
TELEPHONE: (817) 744-7512 • FAX: (817) 744-7554  
2803 NORTH BIG SPRING • MIDLAND, TEXAS 79705  
TELEPHONE: (432) 682-1653 OR (800) 767-1653 • FAX: (432) 682-1743  
WWW.TOPOGRAPHIC.COM

SCALE: 1" = 300'

0' 150' 300'

SECTION 15, TOWNSHIP 26-S, RANGE 31-E, N.M.P.M.  
EDDY COUNTY, NEW MEXICO



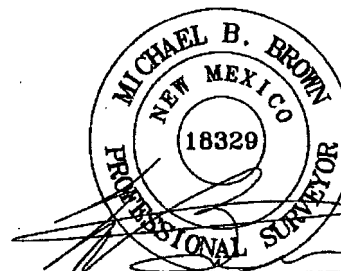
LEGEND

- SECTION LINE
- PROPOSED SITE
- 500' PROXIMITY
- OHE OVERHEAD ELECTRIC
- SIXTEENTH SECTION LINE
- PROPOSED ROAD
- ROAD WAY
- EXISTING PIPELINE
- OHE PROPOSED ELECTRIC
- PROPOSED FLOWLINE
- GAS PROPOSED GAS TAKEAWAY
- W PROPOSED WATER LINE
- OIL PROPOSED OIL LINE
- IRON ROD SET
- IRON PIPE FOUND



**TOPOGRAPHIC**  
LOYALTY INNOVATION LEGACY

1400 EVERMAN PARKWAY, Ste. 146 • FT. WORTH, TEXAS 76140  
TELEPHONE: (817) 744-7512 • FAX (817) 744-7554  
2903 NORTH BIG SPRING • MIDLAND, TEXAS 79705  
TELEPHONE: (432) 682-1653 OR (800) 767-1653 • FAX (432) 682-1743  
WWW.TOPOGRAPHIC.COM



Michael Blake Brown, P.S. No. 18329  
MARCH 4, 2019

BOROS FEDERAL 124H PROXIMITY MAP		REVISION:		NOTES: 1. ORIGINAL DOCUMENT SIZE: 8.5" X 11" 2. ALL BEARINGS, DISTANCES, AND COORDINATE VALUES CONTAINED HEREIN ARE GRID BASED UPON THE NEW MEXICO COORDINATE SYSTEM OF 1983, EAST ZONE, U.S. SURVEY FEET. 3. CERTIFICATION IS MADE ONLY TO THE LOCATION OF THIS EASEMENT, IN RELATION TO THE EVIDENCE FOUND DURING A FIELD SURVEY, MADE ON THE GROUND, UNDER MY SUPERVISION, AND USING DOCUMENTATION PROVIDED BY MATADOR PRODUCTION COMPANY. ONLY UTILITIES/EASEMENTS THAT WERE VISIBLE ON THE DATE OF THIS SURVEY, WITHIN ADJOINING THIS EASEMENT, HAVE BEEN LOCATED AS SHOWN HEREON OF WHICH I HAVE KNOWLEDGE. THIS CERTIFICATION IS LIMITED TO THOSE PERSONS OR ENTITIES SHOWN ON THE FACE OF THIS PLAT AND IS NON-TRANSFERABLE, AND MADE FOR THIS TRANSACTION ONLY. 4. ADJOINER INFORMATION SHOWN FOR INFORMATIONAL PURPOSES ONLY.
DATE:	12/27/18	JLS	01/21/19	
FILE: LO_BOROS_FEDERAL_124H_REV4		EAH	01/28/19	
DRAWN BY:	GJU	MML	02/08/19	
SHEET:	7 OF 7	IMU	02/28/19	



U.S. Department of the Interior  
BUREAU OF LAND MANAGEMENT

## Drilling Plan Data Report

12/04/2019

APD ID: 10400041808

Submission Date: 05/14/2019

Highlighted data  
reflects the most  
recent changes

Operator Name: MATADOR PRODUCTION COMPANY

Well Name: BOROS FEDERAL

Well Number: 124H

[Show Final Text](#)

Well Type: OIL WELL

Well Work Type: Drill

### Section 1 - Geologic Formations

Formation ID	Formation Name	Elevation	True Vertical Depth	Measured Depth	Lithologies	Mineral Resources	Producing Formation
1	RUSTLER	1811	1406	1406		NONE	N
2	TOP SALT	319	1494	1494		NONE	N
3	CASTILE	-1578	3391	3391		NONE	N
4	BASE OF SALT	-2312	4125	4125		NONE	N
5	BELL CANYON	-2342	4155	4155		NATURAL GAS,OIL	N
6	CHERRY CANYON	-3355	5168	5168		NATURAL GAS,OIL	N
7	BRUSHY CANYON	-4589	6402	6402		NATURAL GAS,OIL	N
8	BONE SPRING LIME	-6319	8132	8132		NATURAL GAS,OIL	N
9	BONE SPRING 1ST	-7391	9204	9204		NATURAL GAS,OIL	N
10	BONE SPRING 2ND	-7736	9549	9573		NATURAL GAS,OIL	Y

### Section 2 - Blowout Prevention

Pressure Rating (PSI): 5M

Rating Depth: 12000

**Equipment:** A 12,000' 5000 psi BOP stack consisting of 3 rams with 2 pipe rams, 1 blind ram, and one annular preventer will be utilized below surface casing to TD. See attachments for BOP and choke manifold diagrams. An accumulator complying with Onshore Order#2 requirements for the pressure rating of the BOP stack will be present. A rotating head will also be installed as needed.

**Requesting Variance?** YES

**Variance request:** Matador requests a variance to have the option of running a multi-bowl wellhead assembly for setting the Intermediate 1 and Production Strings. The BOPs will not be tested again unless any flanges are separated. Matador requests a variance to drill this well using a co-flex line between the BOP and choke manifold. Certification for proposed co-flex hose is attached. The hose is not required by the manufacturer to be anchored. If the specific hose is not available, then one of equal or higher rating will be used. Matador requests a variance to have the option of batch drilling this well with other wells on the same pad. In the event that this well is batch drilled, the wellbore will be secured with a blind flange of like pressure. When the rig returns to this well and BOPs are installed, the operator will perform a full BOP test.

**Operator Name:** MATADOR PRODUCTION COMPANY

**Well Name:** BOROS FEDERAL

**Well Number:** 124H

**Testing Procedure:** BOP will be inspected and operated as required in Onshore Order#2. Kelly cock and sub equipped with a full opening valve sized to fit the drill pipe and collars will be available on the rig floor in the open position. A third party company will test the BOPs. After setting surface casing, a minimum 5M BOPE system will be installed. Test pressures will be 250psi low and 5000psi high with the annular preventer being tested to 250psi low and 2500psi high before drilling below surface shoe. In the event that the rig drills multiple wells on the pad and any seal subject to test pressures are broken, a full BOP test will be performed when the rig returns and the 5M BOPE system is re-installed.

**Choke Diagram Attachment:**

Boros\_Federal\_\_124H\_5M\_Choke\_Manifold\_Arrangement\_20190513115829.pdf

**BOP Diagram Attachment:**

Boros\_Federal\_\_124H\_5M\_BOP\_20190513115845.pdf

Boros\_Federal\_\_124H\_Co\_Flex\_Certs\_20190513115851.pdf

### Section 3 - Casing

Casing ID	String Type	Hole Size	Csg Size	Condition	Standard	Tapered String	Top Set MD	Bottom Set MD	Top Set TVD	Bottom Set TVD	Top Set MSL	Bottom Set MSL	Calculated casing length MD	Grade	Weight	Joint Type	Collapse SF	Burst SF	Joint SF Type	Joint SF	Body SF Type	Body SF
1	SURFACE	17.5	13.375	NEW	API	N	0	1431	0	1431			1431	J-55	54.5	BUTT	1.125	1.125	BUOY	1.8	BUOY	1.8
2	INTERMEDIATE	12.25	9.625	NEW	API	N	0	4180	0	4180			4180	J-55	40	BUTT	1.125	1.125	BUOY	1.8	BUOY	1.8
3	PRODUCTION	8.75	5.5	NEW	API	N	0	20289	0	9981			20289	P-110	20	OTHER - DW/C-IS HT Plus	1.125	1.125	BUOY	1.8	BUOY	1.8

**Casing Attachments**

**Operator Name:** MATADOR PRODUCTION COMPANY

**Well Name:** BOROS FEDERAL

**Well Number:** 124H

#### Casing Attachments

---

**Casing ID:** 1      **String Type:** SURFACE

**Inspection Document:**

**Spec Document:**

**Tapered String Spec:**

**Casing Design Assumptions and Worksheet(s):**

Boros\_Federal\_\_124H\_BLM\_Casing\_Design\_Assumptions\_3\_string\_20190513121444.pdf

---

**Casing ID:** 2      **String Type:** INTERMEDIATE

**Inspection Document:**

**Spec Document:**

**Tapered String Spec:**

**Casing Design Assumptions and Worksheet(s):**

Boros\_Federal\_\_124H\_BLM\_Casing\_Design\_Assumptions\_3\_string\_20190513121459.pdf

---

**Casing ID:** 3      **String Type:** PRODUCTION

**Inspection Document:**

**Spec Document:**

**Tapered String Spec:**

**Casing Design Assumptions and Worksheet(s):**

Boros\_Federal\_\_124H\_BLM\_Casing\_Design\_Assumptions\_3\_string\_20190513121537.pdf

---

#### Section 4 - Cement



**Operator Name:** MATADOR PRODUCTION COMPANY

**Well Name:** BOROS FEDERAL

**Well Number:** 124H

String Type	Lead/Tail	Stage Tool Depth	Top MD	Bottom MD	Quantity(sx)	Yield	Density	Cu Ft	Excess%	Cement type	Additives
SURFACE	Lead		0	1131	730	1.72	12.5	1251	50	C	5% NaCl + LCM
SURFACE	Tail		1131	1431	250	1.38	14.8	347	50	C	5% NaCl + LCM
INTERMEDIATE	Lead		0	3344	790	2.13	12.6	1677	50	C	Bentonite + 1% CaCL2 + 8% NaCl + LCM
INTERMEDIATE	Tail		3344	4180	310	1.38	14.8	427	50	C	5% NaCl + LCM
PRODUCTION	Lead		3980	8931	700	2.22	11.5	1552	25	H	Fluid Loss + Dispersant + Retarder + LCM
PRODUCTION	Tail		8931	20289	2660	1.35	13.2	3597	25	H	Fluid Loss + Dispersant + Retarder + LCM

### Section 5 - Circulating Medium

**Mud System Type:** Closed

**Will an air or gas system be Used?** NO

**Description of the equipment for the circulating system in accordance with Onshore Order #2:**

**Diagram of the equipment for the circulating system in accordance with Onshore Order #2:**

**Describe what will be on location to control well or mitigate other conditions:** All necessary mud products (barite,bentonite,LCM) for weight addition and fluid loss control will be on location at all times. Mud program is subject to change due to hole conditions.

**Describe the mud monitoring system utilized:** An electronic Pason mud monitoring system complying with Onshore Order 2 will be used.

### Circulating Medium Table

Top Depth	Bottom Depth	Mud Type	Min Weight (lbs/gal)	Max Weight (lbs/gal)	Density (lbs/cu ft)	Gel Strength (lbs/100 sqft)	PH	Viscosity (CP)	Salinity (ppm)	Filtration (cc)	Additional Characteristics
0	1431	SPUD MUD	8.4	8.8							
1431	4180	SALT SATURATED	9.5	10.2							
4180	9981	OTHER : FW/Cut Brine	8.6	9.4							



# **Matador Production Company**

**Rustler Breaks**

**Boros**

**Boros Federal #124H**

**Wellbore #1**

**Plan: BLM Plan #1**

## **Standard Planning Report**

**24 April, 2019**



## Planning Report

**Database:** EDM 5000.14 Single User Db  
**Company:** Matador Production Company  
**Project:** Rustler Breaks  
**Site:** Boros  
**Well:** Boros Federal #124H  
**Wellbore:** Wellbore #1  
**Design:** BLM Plan #1

**Local Co-ordinate Reference:** Well Boros Federal #124H  
**TVD Reference:** KB @ 3245.5usft  
**MD Reference:** KB @ 3245.5usft  
**North Reference:** Grid  
**Survey Calculation Method:** Minimum Curvature

<b>Project</b>	Rustler Breaks		
<b>Map System:</b>	US State Plane 1927 (Exact solution)	<b>System Datum:</b>	Mean Sea Level
<b>Geo Datum:</b>	NAD 1927 (NADCON CONUS)		
<b>Map Zone:</b>	New Mexico East 3001		Using geodetic scale factor

<b>Site</b>	Boros		
<b>Site Position:</b>		<b>Northing:</b>	381,953.36 usft
<b>From:</b>	Lat/Long	<b>Easting:</b>	676,179.89 usft
<b>Position Uncertainty:</b>	0.0 usft	<b>Slot Radius:</b>	13-3/16 "
		<b>Latitude:</b>	- 32° 2' 55.786 N
		<b>Longitude:</b>	103° 45' 52.934 W
		<b>Grid Convergence:</b>	0.30 °

<b>Well</b>	Boros Federal #124H		
<b>Well Position</b>	+N/-S	42.0 usft	<b>Northing:</b> 381,995.37 usft
	+E/-W	1,662.8 usft	<b>Easting:</b> 677,842.64 usft
<b>Position Uncertainty</b>	0.0 usft	<b>Wellhead Elevation:</b>	<b>Latitude:</b> 32° 2' 56.115 N
			<b>Longitude:</b> 103° 45' 33.612 W
			<b>Ground Level:</b> 3,217.0 usft

<b>Wellbore</b>	Wellbore #1		
<b>Magnetics</b>	<b>Model Name</b>	<b>Sample Date</b>	<b>Declination</b>
	IGRF200510	12/31/2009	(°)
			7.82
			<b>Dip Angle</b>
			(°)
			60.04
			<b>Field Strength</b>
			(nT)
			48,667.49716414

<b>Design</b>	BLM Plan #1		
<b>Audit Notes:</b>			
<b>Version:</b>	1	<b>Phase:</b>	PLAN
<b>Vertical Section:</b>	<b>Depth From (TVD)</b>	<b>+N/-S</b>	<b>Tie On Depth:</b>
	(usft)	(usft)	
	0.0	0.0	0.0
			<b>Direction</b>
			(°)
			179.64

<b>Plan Survey Tool Program</b>	<b>Date</b> 4/24/2019		
<b>Depth From</b>	<b>Depth To</b>	<b>Survey (Wellbore)</b>	<b>Tool Name</b>
(usft)	(usft)		
1	0.0	20,289.9 BLM Plan #1 (Wellbore #1)	MWD
			OWSG MWD - Standard
			<b>Remarks</b>

<b>Plan Sections</b>										
<b>Measured</b>	<b>Inclination</b>	<b>Azimuth</b>	<b>Vertical</b>	<b>+N/-S</b>	<b>+E/-W</b>	<b>Dogleg</b>	<b>Build</b>	<b>Turn</b>	<b>TFO</b>	<b>Target</b>
<b>Depth</b>	(°)	(°)	<b>Depth</b>	(usft)	(usft)	<b>Rate</b>	<b>Rate</b>	<b>Rate</b>	(°)	
(usft)			(usft)			(°/100usft)	(°/100usft)	(°/100usft)		
0.0	0.00	0.00	0.0	0.0	0.0	0.00	0.00	0.00	0.00	
1,500.0	0.00	0.00	1,500.0	0.0	0.0	0.00	0.00	0.00	0.00	
2,300.0	8.00	344.89	2,297.4	53.8	-14.5	1.00	1.00	0.00	344.89	
4,242.0	8.00	344.89	4,220.5	314.8	-85.0	0.00	0.00	0.00	0.00	
4,775.3	0.00	0.00	4,752.1	350.7	-94.7	1.50	-1.50	0.00	180.00	
9,431.2	0.00	0.00	9,408.0	350.7	-94.7	0.00	0.00	0.00	0.00	VP - Boros Federal #1
10,331.2	90.00	168.00	9,981.0	-209.8	24.5	10.00	10.00	0.00	168.00	
10,913.3	90.00	179.64	9,981.0	-787.4	87.0	2.00	0.00	2.00	90.00	
20,289.9	90.00	179.64	9,981.0	-10,163.9	145.8	0.00	0.00	0.00	0.00	BHL - Boros Federal #1



# Planning Report

Database: EDM 5000.14 Single User Db  
 Company: Matador Production Company  
 Project: Rustler Breaks  
 Site: Boros  
 Well: Boros Federal #124H  
 Wellbore: Wellbore #1  
 Design: BLM Plan #1

Local Co-ordinate Reference: Well Boros Federal #124H  
 TVD Reference: KB @ 3245.5usft  
 MD Reference: KB @ 3245.5usft  
 North Reference: Grid  
 Survey Calculation Method: Minimum Curvature

## Planned Survey

Measured Depth (usft)	Inclination (°)	Azimuth (°)	Vertical Depth (usft)	+N/-S (usft)	+E/-W (usft)	Vertical Section (usft)	Dogleg Rate (°/100usft)	Build Rate (°/100usft)	Turn Rate (°/100usft)
0.0	0.00	0.00	0.0	0.0	0.0	0.0	0.00	0.00	0.00
100.0	0.00	0.00	100.0	0.0	0.0	0.0	0.00	0.00	0.00
200.0	0.00	0.00	200.0	0.0	0.0	0.0	0.00	0.00	0.00
300.0	0.00	0.00	300.0	0.0	0.0	0.0	0.00	0.00	0.00
400.0	0.00	0.00	400.0	0.0	0.0	0.0	0.00	0.00	0.00
500.0	0.00	0.00	500.0	0.0	0.0	0.0	0.00	0.00	0.00
600.0	0.00	0.00	600.0	0.0	0.0	0.0	0.00	0.00	0.00
700.0	0.00	0.00	700.0	0.0	0.0	0.0	0.00	0.00	0.00
800.0	0.00	0.00	800.0	0.0	0.0	0.0	0.00	0.00	0.00
900.0	0.00	0.00	900.0	0.0	0.0	0.0	0.00	0.00	0.00
1,000.0	0.00	0.00	1,000.0	0.0	0.0	0.0	0.00	0.00	0.00
1,100.0	0.00	0.00	1,100.0	0.0	0.0	0.0	0.00	0.00	0.00
1,200.0	0.00	0.00	1,200.0	0.0	0.0	0.0	0.00	0.00	0.00
1,300.0	0.00	0.00	1,300.0	0.0	0.0	0.0	0.00	0.00	0.00
1,400.0	0.00	0.00	1,400.0	0.0	0.0	0.0	0.00	0.00	0.00
1,406.0	0.00	0.00	1,406.0	0.0	0.0	0.0	0.00	0.00	0.00
<b>Rustler</b>									
1,494.0	0.00	0.00	1,494.0	0.0	0.0	0.0	0.00	0.00	0.00
<b>Salado (Top Salt)</b>									
1,500.0	0.00	0.00	1,500.0	0.0	0.0	0.0	0.00	0.00	0.00
<b>Start Build 1.00</b>									
1,600.0	1.00	344.89	1,600.0	0.8	-0.2	-0.8	1.00	1.00	0.00
1,700.0	2.00	344.89	1,700.0	3.4	-0.9	-3.4	1.00	1.00	0.00
1,800.0	3.00	344.89	1,799.9	7.6	-2.0	-7.6	1.00	1.00	0.00
1,900.0	4.00	344.89	1,899.7	13.5	-3.6	-13.5	1.00	1.00	0.00
2,000.0	5.00	344.89	1,999.4	21.0	-5.7	-21.1	1.00	1.00	0.00
2,100.0	6.00	344.89	2,098.9	30.3	-8.2	-30.4	1.00	1.00	0.00
2,200.0	7.00	344.89	2,198.3	41.2	-11.1	-41.3	1.00	1.00	0.00
2,300.0	8.00	344.89	2,297.4	53.8	-14.5	-53.9	1.00	1.00	0.00
<b>Start 1942.0 hold at 2300.0 MD</b>									
2,400.0	8.00	344.89	2,396.4	67.3	-18.2	-67.4	0.00	0.00	0.00
2,500.0	8.00	344.89	2,495.5	80.7	-21.8	-80.8	0.00	0.00	0.00
2,600.0	8.00	344.89	2,594.5	94.1	-25.4	-94.3	0.00	0.00	0.00
2,700.0	8.00	344.89	2,693.5	107.6	-29.0	-107.8	0.00	0.00	0.00
2,800.0	8.00	344.89	2,792.5	121.0	-32.7	-121.2	0.00	0.00	0.00
2,900.0	8.00	344.89	2,891.6	134.5	-36.3	-134.7	0.00	0.00	0.00
3,000.0	8.00	344.89	2,990.6	147.9	-39.9	-148.1	0.00	0.00	0.00
3,100.0	8.00	344.89	3,089.6	161.3	-43.5	-161.6	0.00	0.00	0.00
3,200.0	8.00	344.89	3,188.6	174.8	-47.2	-175.1	0.00	0.00	0.00
3,300.0	8.00	344.89	3,287.7	188.2	-50.8	-188.5	0.00	0.00	0.00
3,400.0	8.00	344.89	3,386.7	201.6	-54.4	-202.0	0.00	0.00	0.00
3,500.0	8.00	344.89	3,485.7	215.1	-58.1	-215.4	0.00	0.00	0.00
3,600.0	8.00	344.89	3,584.8	228.5	-61.7	-228.9	0.00	0.00	0.00
3,700.0	8.00	344.89	3,683.8	241.9	-65.3	-242.3	0.00	0.00	0.00
3,800.0	8.00	344.89	3,782.8	255.4	-68.9	-255.8	0.00	0.00	0.00
3,900.0	8.00	344.89	3,881.8	268.8	-72.6	-269.3	0.00	0.00	0.00
4,000.0	8.00	344.89	3,980.9	282.3	-76.2	-282.7	0.00	0.00	0.00
4,100.0	8.00	344.89	4,079.9	295.7	-79.8	-296.2	0.00	0.00	0.00
4,145.6	8.00	344.89	4,125.0	301.8	-81.5	-302.3	0.00	0.00	0.00
<b>Base Salt</b>									
4,175.9	8.00	344.89	4,155.0	305.9	-82.6	-306.4	0.00	0.00	0.00
<b>Bell Canyon</b>									
4,200.0	8.00	344.89	4,178.9	309.1	-83.4	-309.6	0.00	0.00	0.00



# Planning Report

Database: EDM 5000.14 Single User Db  
 Company: Matador Production Company  
 Project: Rustler Breaks  
 Site: Boros  
 Well: Boros Federal #124H  
 Wellbore: Wellbore #1  
 Design: BLM Plan #1

Local Co-ordinate Reference: Well Boros Federal #124H  
 TVD Reference: KB @ 3245.5usft  
 MD Reference: KB @ 3245.5usft  
 North Reference: Grid  
 Survey Calculation Method: Minimum Curvature

## Planned Survey

Measured Depth (usft)	Inclination (°)	Azimuth (°)	Vertical Depth (usft)	+N/-S (usft)	+E/-W (usft)	Vertical Section (usft)	Dogleg Rate (°/100usft)	Build Rate (°/100usft)	Turn Rate (°/100usft)
4,242.0	8.00	344.89	4,220.5	314.8	-85.0	-315.3	0.00	0.00	0.00
<b>Start Drop -1.50</b>									
4,300.0	7.13	344.89	4,278.0	322.1	-87.0	-322.7	1.50	-1.50	0.00
4,400.0	5.63	344.89	4,377.4	332.9	-89.9	-333.4	1.50	-1.50	0.00
4,500.0	4.13	344.89	4,477.0	341.1	-92.1	-341.7	1.50	-1.50	0.00
4,600.0	2.63	344.89	4,576.8	346.8	-93.6	-347.4	1.50	-1.50	0.00
4,700.0	1.13	344.89	4,676.8	349.9	-94.5	-350.5	1.50	-1.50	0.00
4,775.3	0.00	0.00	4,752.1	350.7	-94.7	-351.2	1.50	-1.50	0.00
<b>Start 4655.9 hold at 4775.3 MD</b>									
4,800.0	0.00	0.00	4,776.8	350.7	-94.7	-351.2	0.00	0.00	0.00
4,900.0	0.00	0.00	4,876.8	350.7	-94.7	-351.2	0.00	0.00	0.00
5,000.0	0.00	0.00	4,976.8	350.7	-94.7	-351.2	0.00	0.00	0.00
5,100.0	0.00	0.00	5,076.8	350.7	-94.7	-351.2	0.00	0.00	0.00
5,191.2	0.00	0.00	5,168.0	350.7	-94.7	-351.2	0.00	0.00	0.00
<b>Cherry Canyon</b>									
5,200.0	0.00	0.00	5,176.8	350.7	-94.7	-351.2	0.00	0.00	0.00
5,300.0	0.00	0.00	5,276.8	350.7	-94.7	-351.2	0.00	0.00	0.00
5,400.0	0.00	0.00	5,376.8	350.7	-94.7	-351.2	0.00	0.00	0.00
5,500.0	0.00	0.00	5,476.8	350.7	-94.7	-351.2	0.00	0.00	0.00
5,600.0	0.00	0.00	5,576.8	350.7	-94.7	-351.2	0.00	0.00	0.00
5,700.0	0.00	0.00	5,676.8	350.7	-94.7	-351.2	0.00	0.00	0.00
5,800.0	0.00	0.00	5,776.8	350.7	-94.7	-351.2	0.00	0.00	0.00
5,900.0	0.00	0.00	5,876.8	350.7	-94.7	-351.2	0.00	0.00	0.00
6,000.0	0.00	0.00	5,976.8	350.7	-94.7	-351.2	0.00	0.00	0.00
6,100.0	0.00	0.00	6,076.8	350.7	-94.7	-351.2	0.00	0.00	0.00
6,200.0	0.00	0.00	6,176.8	350.7	-94.7	-351.2	0.00	0.00	0.00
6,300.0	0.00	0.00	6,276.8	350.7	-94.7	-351.2	0.00	0.00	0.00
6,400.0	0.00	0.00	6,376.8	350.7	-94.7	-351.2	0.00	0.00	0.00
6,425.2	0.00	0.00	6,402.0	350.7	-94.7	-351.2	0.00	0.00	0.00
<b>Brushy Canyon</b>									
6,500.0	0.00	0.00	6,476.8	350.7	-94.7	-351.2	0.00	0.00	0.00
6,600.0	0.00	0.00	6,576.8	350.7	-94.7	-351.2	0.00	0.00	0.00
6,700.0	0.00	0.00	6,676.8	350.7	-94.7	-351.2	0.00	0.00	0.00
6,800.0	0.00	0.00	6,776.8	350.7	-94.7	-351.2	0.00	0.00	0.00
6,900.0	0.00	0.00	6,876.8	350.7	-94.7	-351.2	0.00	0.00	0.00
7,000.0	0.00	0.00	6,976.8	350.7	-94.7	-351.2	0.00	0.00	0.00
7,100.0	0.00	0.00	7,076.8	350.7	-94.7	-351.2	0.00	0.00	0.00
7,200.0	0.00	0.00	7,176.8	350.7	-94.7	-351.2	0.00	0.00	0.00
7,300.0	0.00	0.00	7,276.8	350.7	-94.7	-351.2	0.00	0.00	0.00
7,400.0	0.00	0.00	7,376.8	350.7	-94.7	-351.2	0.00	0.00	0.00
7,500.0	0.00	0.00	7,476.8	350.7	-94.7	-351.2	0.00	0.00	0.00
7,554.2	0.00	0.00	7,531.0	350.7	-94.7	-351.2	0.00	0.00	0.00
<b>L. Brushy Canyon</b>									
7,600.0	0.00	0.00	7,576.8	350.7	-94.7	-351.2	0.00	0.00	0.00
7,700.0	0.00	0.00	7,676.8	350.7	-94.7	-351.2	0.00	0.00	0.00
7,800.0	0.00	0.00	7,776.8	350.7	-94.7	-351.2	0.00	0.00	0.00
7,900.0	0.00	0.00	7,876.8	350.7	-94.7	-351.2	0.00	0.00	0.00
8,000.0	0.00	0.00	7,976.8	350.7	-94.7	-351.2	0.00	0.00	0.00
8,100.0	0.00	0.00	8,076.8	350.7	-94.7	-351.2	0.00	0.00	0.00
8,155.2	0.00	0.00	8,132.0	350.7	-94.7	-351.2	0.00	0.00	0.00
<b>BSGL</b>									
8,200.0	0.00	0.00	8,176.8	350.7	-94.7	-351.2	0.00	0.00	0.00
8,250.2	0.00	0.00	8,227.0	350.7	-94.7	-351.2	0.00	0.00	0.00



# Planning Report

Database: EDM 5000.14 Single User Db  
 Company: Matador Production Company  
 Project: Rustler Breaks  
 Site: Boros  
 Well: Boros Federal #124H  
 Wellbore #: Wellbore #1  
 Design: BLM Plan #1

Local Co-ordinate Reference: Well Boros Federal #124H  
 TVD Reference: KB @ 3245.5usft  
 MD Reference: KB @ 3245.5usft  
 North Reference: Grid  
 Survey Calculation Method: Minimum Curvature

## Planned Survey

Measured Depth (usft)	Inclination (°)	Azimuth (°)	Vertical Depth (usft)	+N/-S (usft)	+E/-W (usft)	Vertical Section (usft)	Dogleg Rate (°/100usft)	Build Rate (°/100usft)	Turn Rate (°/100usft)
<b>Avalon-SS</b>									
8,300.0	0.00	0.00	8,276.8	350.7	-94.7	-351.2	0.00	0.00	0.00
8,400.0	0.00	0.00	8,376.8	350.7	-94.7	-351.2	0.00	0.00	0.00
8,500.0	0.00	0.00	8,476.8	350.7	-94.7	-351.2	0.00	0.00	0.00
8,600.0	0.00	0.00	8,576.8	350.7	-94.7	-351.2	0.00	0.00	0.00
8,700.0	0.00	0.00	8,676.8	350.7	-94.7	-351.2	0.00	0.00	0.00
8,800.0	0.00	0.00	8,776.8	350.7	-94.7	-351.2	0.00	0.00	0.00
8,900.0	0.00	0.00	8,876.8	350.7	-94.7	-351.2	0.00	0.00	0.00
9,000.0	0.00	0.00	8,976.8	350.7	-94.7	-351.2	0.00	0.00	0.00
9,100.0	0.00	0.00	9,076.8	350.7	-94.7	-351.2	0.00	0.00	0.00
9,200.0	0.00	0.00	9,176.8	350.7	-94.7	-351.2	0.00	0.00	0.00
9,227.2	0.00	0.00	9,204.0	350.7	-94.7	-351.2	0.00	0.00	0.00
<b>FBSG</b>									
9,300.0	0.00	0.00	9,276.8	350.7	-94.7	-351.2	0.00	0.00	0.00
9,400.0	0.00	0.00	9,376.8	350.7	-94.7	-351.2	0.00	0.00	0.00
9,431.2	0.00	0.00	9,408.0	350.7	-94.7	-351.2	0.00	0.00	0.00
<b>Start Build 10.00 - VP - Boros Federal #124H</b>									
9,500.0	6.88	168.00	9,476.6	346.6	-93.8	-347.2	10.00	10.00	0.00
9,573.7	14.25	168.00	9,549.0	333.4	-91.0	-334.0	10.00	10.00	0.00
<b>SBSC</b>									
9,600.0	16.88	168.00	9,574.3	326.5	-89.5	-327.1	10.00	10.00	0.00
9,700.0	26.88	168.00	9,667.0	290.1	-81.8	-290.6	10.00	10.00	0.00
9,800.0	36.88	168.00	9,751.8	238.5	-70.8	-239.0	10.00	10.00	0.00
9,824.4	39.31	168.00	9,771.0	223.8	-67.7	-224.2	10.00	10.00	0.00
<b>SBSG</b>									
9,900.0	46.88	168.00	9,826.2	173.3	-57.0	-173.7	10.00	10.00	0.00
10,000.0	56.88	168.00	9,887.9	96.5	-40.6	-96.7	10.00	10.00	0.00
10,100.0	66.88	168.00	9,934.9	10.3	-22.3	-10.4	10.00	10.00	0.00
10,200.0	76.88	168.00	9,966.0	-82.5	-2.6	82.5	10.00	10.00	0.00
10,300.0	86.88	168.00	9,980.1	-179.3	18.0	179.4	10.00	10.00	0.00
10,331.2	90.00	168.00	9,981.0	-209.8	24.5	209.9	10.00	10.00	0.00
<b>Start DLS 2.00 TFO 90.00</b>									
10,400.0	90.00	169.38	9,981.0	-277.2	38.0	277.4	2.00	0.00	2.00
10,500.0	90.00	171.38	9,981.0	-375.8	54.7	376.1	2.00	0.00	2.00
10,600.0	90.00	173.38	9,981.0	-474.9	67.9	475.3	2.00	0.00	2.00
10,700.0	90.00	175.38	9,981.0	-574.4	77.7	574.9	2.00	0.00	2.00
10,800.0	90.00	177.38	9,981.0	-674.2	84.1	674.7	2.00	0.00	2.00
10,900.0	90.00	179.38	9,981.0	-774.2	86.9	774.7	2.00	0.00	2.00
10,913.3	90.00	179.64	9,981.0	-787.4	87.0	788.0	2.00	0.00	2.00
<b>Start 9376.7 hold at 10913.3 MD</b>									
11,000.0	90.00	179.64	9,981.0	-874.2	87.6	874.7	0.00	0.00	0.00
11,100.0	90.00	179.64	9,981.0	-974.2	88.2	974.7	0.00	0.00	0.00
11,200.0	90.00	179.64	9,981.0	-1,074.2	88.8	1,074.7	0.00	0.00	0.00
11,300.0	90.00	179.64	9,981.0	-1,174.2	89.4	1,174.7	0.00	0.00	0.00
11,400.0	90.00	179.64	9,981.0	-1,274.2	90.1	1,274.7	0.00	0.00	0.00
11,500.0	90.00	179.64	9,981.0	-1,374.2	90.7	1,374.7	0.00	0.00	0.00
11,600.0	90.00	179.64	9,981.0	-1,474.2	91.3	1,474.7	0.00	0.00	0.00
11,700.0	90.00	179.64	9,981.0	-1,574.2	92.0	1,574.7	0.00	0.00	0.00
11,800.0	90.00	179.64	9,981.0	-1,674.2	92.6	1,674.7	0.00	0.00	0.00
11,900.0	90.00	179.64	9,981.0	-1,774.2	93.2	1,774.7	0.00	0.00	0.00
12,000.0	90.00	179.64	9,981.0	-1,874.2	93.8	1,874.7	0.00	0.00	0.00
12,100.0	90.00	179.64	9,981.0	-1,974.2	94.5	1,974.7	0.00	0.00	0.00
12,200.0	90.00	179.64	9,981.0	-2,074.2	95.1	2,074.7	0.00	0.00	0.00



## Planning Report

**Database:** EDM 5000.14 Single User Db  
**Company:** Matador Production Company  
**Project:** Rustler Breaks  
**Site:** Boros  
**Well:** Boros Federal #124H  
**Wellbore:** Wellbore #1  
**Design:** BLM Plan #1

**Local Co-ordinate Reference:** Well Boros Federal #124H  
**TVD Reference:** KB @ 3245.5usft  
**MD Reference:** KB @ 3245.5usft  
**North Reference:** Grid  
**Survey Calculation Method:** Minimum Curvature

### Planned Survey

Measured Depth (usft)	Inclination (°)	Azimuth (°)	Vertical Depth (usft)	+N/-S (usft)	+E/-W (usft)	Vertical Section (usft)	Dogleg Rate (°/100usft)	Build Rate (°/100usft)	Turn Rate (°/100usft)
12,300.0	90.00	179.64	9,981.0	-2,174.1	95.7	2,174.7	0.00	0.00	0.00
12,400.0	90.00	179.64	9,981.0	-2,274.1	96.3	2,274.7	0.00	0.00	0.00
12,500.0	90.00	179.64	9,981.0	-2,374.1	97.0	2,374.7	0.00	0.00	0.00
12,600.0	90.00	179.64	9,981.0	-2,474.1	97.6	2,474.7	0.00	0.00	0.00
12,700.0	90.00	179.64	9,981.0	-2,574.1	98.2	2,574.7	0.00	0.00	0.00
12,800.0	90.00	179.64	9,981.0	-2,674.1	98.8	2,674.7	0.00	0.00	0.00
12,900.0	90.00	179.64	9,981.0	-2,774.1	99.5	2,774.7	0.00	0.00	0.00
13,000.0	90.00	179.64	9,981.0	-2,874.1	100.1	2,874.7	0.00	0.00	0.00
13,100.0	90.00	179.64	9,981.0	-2,974.1	100.7	2,974.7	0.00	0.00	0.00
13,200.0	90.00	179.64	9,981.0	-3,074.1	101.4	3,074.7	0.00	0.00	0.00
13,300.0	90.00	179.64	9,981.0	-3,174.1	102.0	3,174.7	0.00	0.00	0.00
13,400.0	90.00	179.64	9,981.0	-3,274.1	102.6	3,274.7	0.00	0.00	0.00
13,500.0	90.00	179.64	9,981.0	-3,374.1	103.2	3,374.7	0.00	0.00	0.00
13,600.0	90.00	179.64	9,981.0	-3,474.1	103.9	3,474.7	0.00	0.00	0.00
13,700.0	90.00	179.64	9,981.0	-3,574.1	104.5	3,574.7	0.00	0.00	0.00
13,800.0	90.00	179.64	9,981.0	-3,674.1	105.1	3,674.7	0.00	0.00	0.00
13,900.0	90.00	179.64	9,981.0	-3,774.1	105.7	3,774.7	0.00	0.00	0.00
14,000.0	90.00	179.64	9,981.0	-3,874.1	106.4	3,874.7	0.00	0.00	0.00
14,100.0	90.00	179.64	9,981.0	-3,974.1	107.0	3,974.7	0.00	0.00	0.00
14,200.0	90.00	179.64	9,981.0	-4,074.1	107.6	4,074.7	0.00	0.00	0.00
14,300.0	90.00	179.64	9,981.0	-4,174.1	108.3	4,174.7	0.00	0.00	0.00
14,400.0	90.00	179.64	9,981.0	-4,274.1	108.9	4,274.7	0.00	0.00	0.00
14,500.0	90.00	179.64	9,981.0	-4,374.1	109.5	4,374.7	0.00	0.00	0.00
14,600.0	90.00	179.64	9,981.0	-4,474.1	110.1	4,474.7	0.00	0.00	0.00
14,700.0	90.00	179.64	9,981.0	-4,574.1	110.8	4,574.7	0.00	0.00	0.00
14,800.0	90.00	179.64	9,981.0	-4,674.1	111.4	4,674.7	0.00	0.00	0.00
14,900.0	90.00	179.64	9,981.0	-4,774.1	112.0	4,774.7	0.00	0.00	0.00
15,000.0	90.00	179.64	9,981.0	-4,874.1	112.6	4,874.7	0.00	0.00	0.00
15,100.0	90.00	179.64	9,981.0	-4,974.1	113.3	4,974.7	0.00	0.00	0.00
15,200.0	90.00	179.64	9,981.0	-5,074.1	113.9	5,074.7	0.00	0.00	0.00
15,300.0	90.00	179.64	9,981.0	-5,174.1	114.5	5,174.7	0.00	0.00	0.00
15,400.0	90.00	179.64	9,981.0	-5,274.1	115.2	5,274.7	0.00	0.00	0.00
15,500.0	90.00	179.64	9,981.0	-5,374.1	115.8	5,374.7	0.00	0.00	0.00
15,600.0	90.00	179.64	9,981.0	-5,474.1	116.4	5,474.7	0.00	0.00	0.00
15,700.0	90.00	179.64	9,981.0	-5,574.1	117.0	5,574.7	0.00	0.00	0.00
15,800.0	90.00	179.64	9,981.0	-5,674.1	117.7	5,674.7	0.00	0.00	0.00
15,900.0	90.00	179.64	9,981.0	-5,774.1	118.3	5,774.7	0.00	0.00	0.00
16,000.0	90.00	179.64	9,981.0	-5,874.1	118.9	5,874.7	0.00	0.00	0.00
16,100.0	90.00	179.64	9,981.0	-5,974.1	119.5	5,974.7	0.00	0.00	0.00
16,200.0	90.00	179.64	9,981.0	-6,074.1	120.2	6,074.7	0.00	0.00	0.00
16,300.0	90.00	179.64	9,981.0	-6,174.1	120.8	6,174.7	0.00	0.00	0.00
16,400.0	90.00	179.64	9,981.0	-6,274.1	121.4	6,274.7	0.00	0.00	0.00
16,500.0	90.00	179.64	9,981.0	-6,374.1	122.0	6,374.7	0.00	0.00	0.00
16,600.0	90.00	179.64	9,981.0	-6,474.1	122.7	6,474.7	0.00	0.00	0.00
16,700.0	90.00	179.64	9,981.0	-6,574.1	123.3	6,574.7	0.00	0.00	0.00
16,800.0	90.00	179.64	9,981.0	-6,674.1	123.9	6,674.7	0.00	0.00	0.00
16,900.0	90.00	179.64	9,981.0	-6,774.1	124.6	6,774.7	0.00	0.00	0.00
17,000.0	90.00	179.64	9,981.0	-6,874.1	125.2	6,874.7	0.00	0.00	0.00
17,100.0	90.00	179.64	9,981.0	-6,974.1	125.8	6,974.7	0.00	0.00	0.00
17,200.0	90.00	179.64	9,981.0	-7,074.1	126.4	7,074.7	0.00	0.00	0.00
17,300.0	90.00	179.64	9,981.0	-7,174.1	127.1	7,174.7	0.00	0.00	0.00
17,400.0	90.00	179.64	9,981.0	-7,274.0	127.7	7,274.7	0.00	0.00	0.00
17,500.0	90.00	179.64	9,981.0	-7,374.0	128.3	7,374.7	0.00	0.00	0.00
17,600.0	90.00	179.64	9,981.0	-7,474.0	128.9	7,474.7	0.00	0.00	0.00



# Planning Report

Database: EDM 5000.14 Single User Db  
 Company: Matador Production Company  
 Project: Rustler Breaks  
 Site: Boros  
 Well: Boros Federal #124H  
 Wellbore: Wellbore #1  
 Design: BLM Plan #1

Local Co-ordinate Reference: Well Boros Federal #124H  
 TVD Reference: KB @ 3245.5usft  
 MD Reference: KB @ 3245.5usft  
 North Reference: Grid  
 Survey Calculation Method: Minimum Curvature

## Planned Survey

Measured Depth (usft)	Inclination (°)	Azimuth (°)	Vertical Depth (usft)	+N/-S (usft)	+E/-W (usft)	Vertical Section (usft)	Dogleg Rate (°/100usft)	Build Rate (°/100usft)	Turn Rate (°/100usft)
17,700.0	90.00	179.64	9,981.0	-7,574.0	129.6	7,574.7	0.00	0.00	0.00
17,800.0	90.00	179.64	9,981.0	-7,674.0	130.2	7,674.7	0.00	0.00	0.00
17,900.0	90.00	179.64	9,981.0	-7,774.0	130.8	7,774.7	0.00	0.00	0.00
18,000.0	90.00	179.64	9,981.0	-7,874.0	131.5	7,874.7	0.00	0.00	0.00
18,100.0	90.00	179.64	9,981.0	-7,974.0	132.1	7,974.7	0.00	0.00	0.00
18,200.0	90.00	179.64	9,981.0	-8,074.0	132.7	8,074.7	0.00	0.00	0.00
18,300.0	90.00	179.64	9,981.0	-8,174.0	133.3	8,174.7	0.00	0.00	0.00
18,400.0	90.00	179.64	9,981.0	-8,274.0	134.0	8,274.7	0.00	0.00	0.00
18,500.0	90.00	179.64	9,981.0	-8,374.0	134.6	8,374.7	0.00	0.00	0.00
18,600.0	90.00	179.64	9,981.0	-8,474.0	135.2	8,474.7	0.00	0.00	0.00
18,700.0	90.00	179.64	9,981.0	-8,574.0	135.8	8,574.7	0.00	0.00	0.00
18,800.0	90.00	179.64	9,981.0	-8,674.0	136.5	8,674.7	0.00	0.00	0.00
18,900.0	90.00	179.64	9,981.0	-8,774.0	137.1	8,774.7	0.00	0.00	0.00
19,000.0	90.00	179.64	9,981.0	-8,874.0	137.7	8,874.7	0.00	0.00	0.00
19,100.0	90.00	179.64	9,981.0	-8,974.0	138.4	8,974.7	0.00	0.00	0.00
19,200.0	90.00	179.64	9,981.0	-9,074.0	139.0	9,074.7	0.00	0.00	0.00
19,300.0	90.00	179.64	9,981.0	-9,174.0	139.6	9,174.7	0.00	0.00	0.00
19,400.0	90.00	179.64	9,981.0	-9,274.0	140.2	9,274.7	0.00	0.00	0.00
19,500.0	90.00	179.64	9,981.0	-9,374.0	140.9	9,374.7	0.00	0.00	0.00
19,600.0	90.00	179.64	9,981.0	-9,474.0	141.5	9,474.7	0.00	0.00	0.00
19,700.0	90.00	179.64	9,981.0	-9,574.0	142.1	9,574.7	0.00	0.00	0.00
19,800.0	90.00	179.64	9,981.0	-9,674.0	142.7	9,674.7	0.00	0.00	0.00
19,900.0	90.00	179.64	9,981.0	-9,774.0	143.4	9,774.7	0.00	0.00	0.00
20,000.0	90.00	179.64	9,981.0	-9,874.0	144.0	9,874.7	0.00	0.00	0.00
20,100.0	90.00	179.64	9,981.0	-9,974.0	144.6	9,974.7	0.00	0.00	0.00
20,200.0	90.00	179.64	9,981.0	-10,074.0	145.2	10,074.7	0.00	0.00	0.00
20,289.9	90.00	179.64	9,981.0	-10,163.9	145.8	10,164.6	0.00	0.00	0.00

TD at 20289.9 - BHL - Boros Federal #124H

## Design Targets

Target Name	Dip Angle (°)	Dip Dir. (°)	TVD (usft)	+N/-S (usft)	+E/-W (usft)	Northing (usft)	Easting (usft)	Latitude	Longitude
- hit/miss target									
- Shape									
VP - Boros Federal #124	0.00	0.00	9,408.0	350.7	-94.7	382,346.00	677,748.00	32° 2' 59.589 N	103° 45' 34.690 W
- plan hits target center									
- Point									
BHL - Boros Federal #12	0.00	0.01	9,981.0	-10,163.9	145.8	371,830.99	677,988.46	32° 1' 15.518 N	103° 45' 32.546 W
- plan hits target center									
- Point									





## Planning Report

**Database:** EDM 5000.14 Single User Db  
**Company:** Matador Production Company  
**Project:** Rustler Breaks  
**Site:** Boros  
**Well:** Boros Federal #124H  
**Wellbore:** Wellbore #1  
**Design:** BLM Plan #1

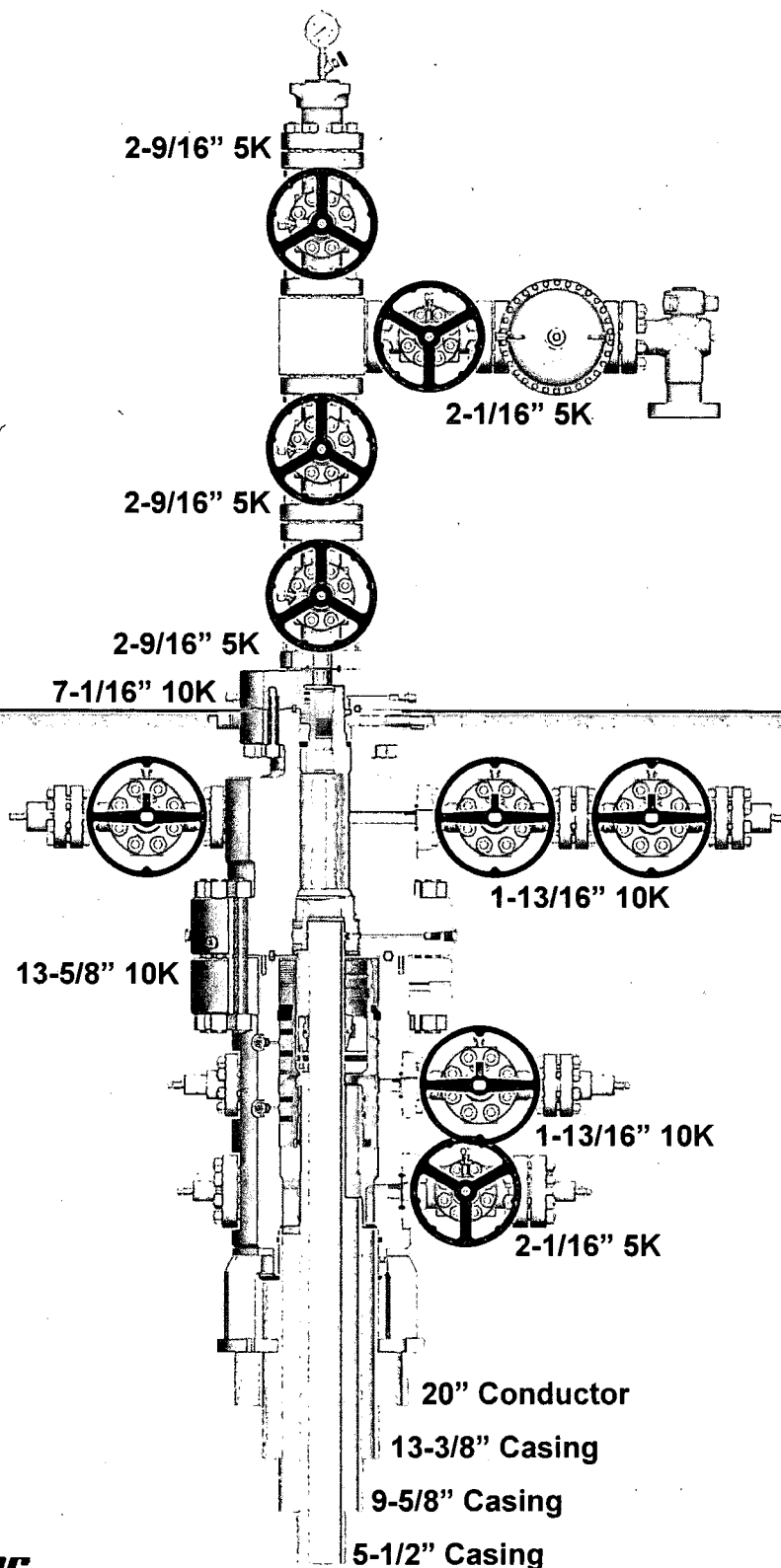
**Local Co-ordinate Reference:** Well Boros Federal #124H  
**TVD Reference:** KB @ 3245.5usft  
**MD Reference:** KB @ 3245.5usft  
**North Reference:** Grid  
**Survey Calculation Method:** Minimum Curvature

### Formations

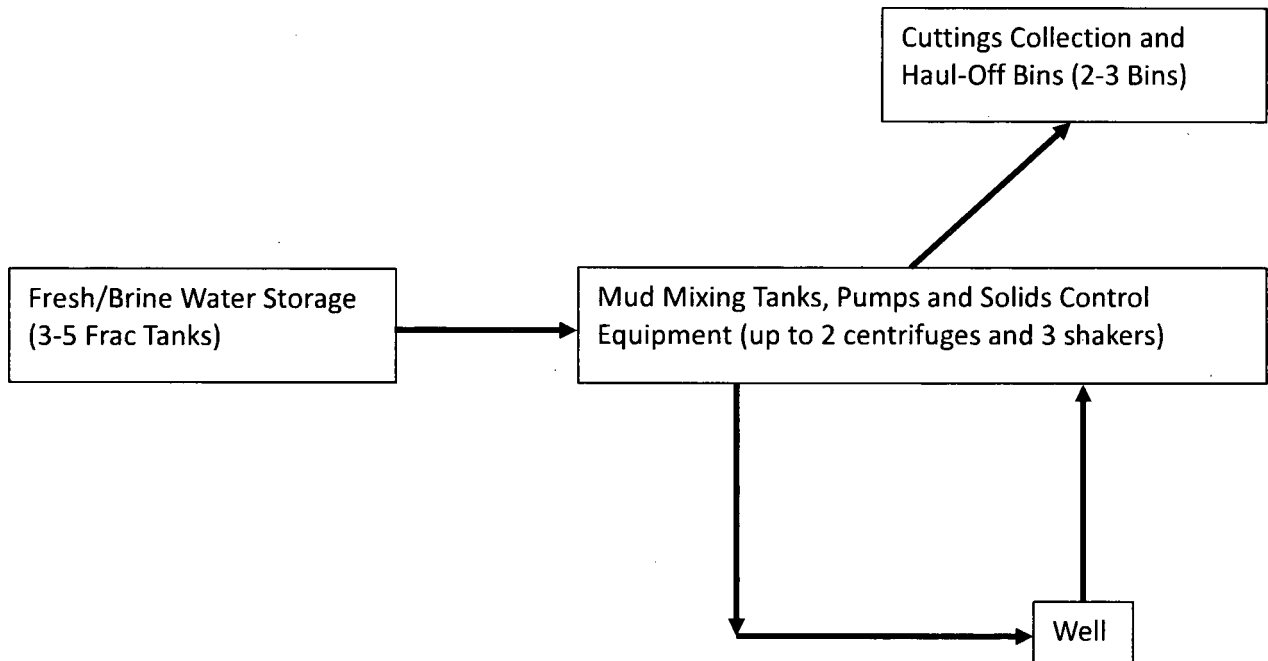
Measured Depth (usft)	Vertical Depth (usft)	Name	Lithology	Dip (°)	Dip Direction (°)
1,406.0	1,406.0	Rustler			
1,494.0	1,494.0	Salado (Top Salt)			
4,145.6	4,125.0	Base Salt			
4,175.9	4,155.0	Bell Canyon			
5,191.2	5,168.0	Cherry Canyon			
6,425.2	6,402.0	Brushy Canyon			
7,554.2	7,531.0	L. Brushy Canyon			
8,155.2	8,132.0	BSGL			
8,250.2	8,227.0	Avalon-SS			
9,227.2	9,204.0	FBSG			
9,573.7	9,549.0	SBSC			
9,824.4	9,771.0	SBSG			

### Plan Annotations

Measured Depth (usft)	Vertical Depth (usft)	Local Coordinates		Comment
		+N/-S (usft)	+E/-W (usft)	
1,500.0	1,500.0	0.0	0.0	Start Build 1.00
2,300.0	2,297.4	53.8	-14.5	Start 1942.0 hold at 2300.0 MD
4,242.0	4,220.5	314.8	-85.0	Start Drop -1.50
4,775.3	4,752.1	350.7	-94.7	Start 4655.9 hold at 4775.3 MD
9,431.2	9,408.0	350.7	-94.7	Start Build 10.00
10,331.2	9,981.0	-209.8	24.5	Start DLS 2.00 TFO 90.00
10,913.3	9,981.0	-787.4	87.0	Start 9376.7 hold at 10913.3 MD
20,289.9	9,981.0	-10,163.9	145.8	TD at 20289.9



## Closed-Loop System



### Operating and Maintenance Plan:

During drilling operations, third party service companies will utilize solids control equipment to remove cuttings from the drilling fluids and collect it in haul-off bins. Equipment will be closely monitored at all times while drilling by the derrick man and the service company employees.

### Closure Plan:

During drilling operations, third party service companies will haul off drill solids and fluids to an approved disposal facility. At the end of the well, all closed loop equipment will be removed from the location.

**Boros Federal #124H**  
**SHL: 400' FNL & 741' FEL Section 15**  
**BHL: 100' FSL & 660' FEL Section 22**  
**Township/Range: 26S 31E**  
**Elevation Above Sea Level: 3,217'**

### Drilling Operation Plan

Proposed Drilling Depth: 20289' MD / 9981' TVD

Type of well: Horizontal well, no pilot hole

Permitted Well Type: Oil

Geologic Name of Surface Formation: Quaternary Deposits

KOP Lat/Long (NAD83): 32.0500109997 N / -103.7601105460 W

TD Lat/Long (NAD83): 32.0211025258 N / -103.7590406122 W

### 1. Estimated Tops

Formation	MD (ft)	TVD (ft)	Thickness (ft)	Lithology	Resource
Rustler	1,406	1,406	88	Anhydrite	Barren
Top of Salt	1,494	1,494	1,897	Salt	Barren
Castile	3,391	3,391	734	Salt	Barren
Base of Salt	4,125	4,125	30	Salt	Barren
Bell Canyon	4,155	4,155	1,013	Sandstone	Oil/Natural Gas
Cherry Canyon	5,168	5,168	1,234	Sandstone	Oil/Natural Gas
Brushy Canyon	6,402	6,402	1,730	Sandstone	Oil/Natural Gas
Bone Spring Lime	8,132	8,132	1,072	Limestone	Oil/Natural Gas
1st Bone Spring Sand	9,204	9,204	345	Sandstone	Oil/Natural Gas
<b>KOP</b>	<b>9,431</b>	<b>9,408</b>		<b>Sandstone</b>	<b>Oil/Natural Gas</b>
2nd Bone Spring Carbonate	9,573	9,549	222	Carbonate	Oil/Natural Gas
2nd Bone Spring Sand	9,824	9,771		Sandstone	Oil/Natural Gas
<b>TD</b>	<b>20,289</b>	<b>9,981</b>		<b>Sandstone</b>	<b>Oil/Natural Gas</b>

### 2. Notable Zones

2nd Bone Spring is the goal. All perforations will be within the setback requirements as prescribed or permitted by the New Mexico Oil Conservation Division. OSE estimated ground water depth at this location is 230'.

### 3. Pressure Control

#### Equipment

A 12,000' 5000-psi BOP stack consisting of 3 rams with 2 pipe rams, 1 blind ram, and one annular preventer will be utilized below surface casing to TD. See attachments for BOP and choke manifold diagrams.

An accumulator complying with Onshore Order #2 requirements for the pressure rating of the BOP stack will be present. A rotating head will also be installed as needed.

#### Testing Procedure

BOP will be inspected and operated as required in Onshore Order #2. Kelly cock and sub equipped with a full opening valve sized to fit the drill pipe and collars will be available on the rig floor in the open position.

A third party company will test the BOPs.

After setting surface casing, a minimum 5M BOPE system will be installed. Test pressures will be 250 psi low and 5000 psi high with the annular preventer being tested to 250 psi low and 2500 psi high before drilling below surface shoe. In the event that the rig drills multiple wells on the pad and any seal subject to test pressures are broken, a full BOP test will be performed when the rig returns and the 5M BOPE system is re-installed.

## Variance Request

Matador requests a variance to have the option of running a multi-bowl wellhead assembly for setting the Intermediate 1 and Production Strings. The BOPs will not be tested again unless any flanges are separated.

Matador requests a variance to drill this well using a co-flex line between the BOP and choke manifold. Certification for proposed co-flex hose is attached. The hose is not required by the manufacturer to be anchored. If the specific hose is not available, then one of equal or higher rating will be used.

Matador requests a variance to have the option of batch drilling this well with other wells on the same pad. In the event that this well is batch drilled, the wellbore will be secured with a blind flange of like pressure. When the rig returns to this well and BOPs are installed, the operator will perform a full BOP test.

## 4. Casing & Cement

All casing will be API and new. See attached casing assumption worksheet.

String	Hole Size (in)	Set MD (ft)	Set TVD (ft)	Casing Size (in)	Wt. (lb/ft)	Grade	Joint	Collapse	Burst	Tension
Surface	17.5	0 - 1431	0 - 1431	13.375	54.5	J-55	BUTT	1.125	1.125	1.8
Intermediate 1	12.25	0 - 4180	0 - 4180	9.625	40	J-55	BUTT	1.125	1.125	1.8
Production	8.75	0 - 20289	0 - 9981	5.5	20	P-110	DWC/C-IS HT Plus	1.125	1.125	1.8

- All casing strings will be tested in accordance with Onshore Order #2 - III.B.1.h

- Rustler top will be validated via drilling parameters (i.e. reduction in ROP) and surface casing setting depth revised accordingly if needed

String	Type	Sacks	Yield	Cu. Ft.	Weight	Percent Excess	Top of Cement	Class	Blend
Surface	Lead	730	1.72	1251	12.5	50%	0	C	5% NaCl + LCM
	Tail	250	1.38	347	14.8	50%	1131	C	5% NaCl + LCM
Intermediate 1	Lead	790	2.13	1677	12.6	50%	0	C	Bentonite + 1% CaCL2 + 8% NaCl + LCM
	Tail	310	1.38	427	14.8	50%	3344	C	5% NaCl + LCM
Production	Lead	700	2.22	1552	11.5	25%	3980	H	Fluid Loss + Dispersant + Retarder + LCM
	Tail	2660	1.35	3597	13.2	25%	8931	H	Fluid Loss + Dispersant + Retarder + LCM

## 5. Mud Program

An electronic Pason mud monitoring system complying with Onshore Order 2 will be used. All necessary mud products (barite, bentonite, LCM) for weight addition and fluid loss control will be on location at all times. Mud program is subject to change due to hole conditions.

Hole Section	Hole Size (in)	Mud Type	Interval MD (ft)	Density (lb/gal)	Viscosity	Fluid Loss
Surface	17.5	Spud Mud	0 - 1431	8.4 - 8.8	28-30	NC
Intermediate 1	12.25	Brine Water	1431 - 4180	9.5 - 10.2	28-30	NC
Production	8.75	FW/Cut Brine	4180 - 20289	8.6 - 9.4	28-30	NC

#### **6. Cores, Test, & Logs**

No core or drill stem test is planned.

A 2-person mud logging program will be used from Kick-off point to TD.

No electric logs are planned at this time. GR will be collected through the MWD tools from Intermediate casing to TD. CBL with CCL will be run as far as gravity will let it fall to top of curve.

#### **7. Down Hole Conditions**

No abnormal pressure or temperature is expected. Maximum anticipated surface pressure is 2683 psi. Expected bottom hole temperature is 171° F.

In accordance with Onshore Order 6, Matador does not anticipate that there will be enough H<sub>2</sub>S from the surface to the Bone Spring formations to meet the BLM's minimum requirements for the submission of a "H<sub>2</sub>S Drilling Operation Plan" or "Public Protection Plan" for the drilling and completion of this well. Since we have a H<sub>2</sub>S safety package on all wells, attached is a "H<sub>2</sub>S Drilling Operations Plan." Adequate flare lines will be installed off the mud/gas separator where gas may be flared safely. All personnel will be familiar with all aspects of safe operation of the equipment being used.

Hydrogen Sulfide Drilling  
Operations Plan  
Matador Resources

1 H2S safety instructions to the following:

- Characteristics of H2S
- Physical effects and hazards
- Principal and operation of H2S detectors, warning system and briefing areas
- Evacuation procedures, routes and first aid
- Proper use of safety equipment & life support systems
- Essential personnel meeting medical evaluation criteria will receive additional training on the proper use of 30min pressure demand air packs

2 H2S Detection and Alarm Systems:

- H2S sensor/detectors to be located on the drilling rig floor, in the base of the sub structure / cellar area, on the mud pits in the shale shaker area. Additional H2S detectors may be placed as deemed necessary
- An audio alarm system will be installed on the derrick floor and in the doghouse

3 Windssocks and / Wind Streamers:

- Windssocks at mud pit area should be high enough to be visible
- Windssock on the rig floor and / top of doghouse should be high enough to be visible

4 Condition Flags and Signs:

- Warning sign on access road to location
- Flags to be displayed on sign at entrance to location
  - Green Flag – Normal Safe Operation Condition
  - Yellow Flag – Potential Pressure and Danger
  - Red Flag – Danger (H2S present in dangerous concentrations) Only H2S trained personnel admitted on location

5 Well Control Equipment:

- See Exhibit E-1

6 Communication:

- While working under masks chalkboards will be used for communications
- Hand signals will be used where chalk board is inappropriate
- Two way radio will be used to communicate off location in case of emergency help is required. In most cases cellular telephones will be available at most drilling foreman's trailer or living quarters.

7 Drilling Stem Testing:

- No DST cores are planned at this time

8 Drilling contractor supervisor will be required to be familiar with the effects H<sub>2</sub>S has on tubulars good and other mechanical equipment

9 If H<sub>2</sub>S is encountered, mud system will be altered if necessary to maintain control of formation. A mud gas separator will be brought into service along with H<sub>2</sub>S scavengers if necessary

11 Emergency Contacts

- See exhibit E-6



**HYDROGEN SULFIDE CONTINGENCY PLAN**  
**Drilling, Testing, & Completion**

**MRC ENERGY CO.**

---

**Reviewers**

----- Operations Manager  
----- Operations Supt.  
----- Staff RES  
----- Field Supt.  
Blake Hermes---Engineering

**H2S Contingency Plan # 0165**

**Revision# 0**

**This H2S Contingency Plan is subject to updating**

**Effective date: July 8, 2015**

## TABLE OF CONTENTS

<b>I.</b>	<b>INTRODUCTION</b>	<b>3</b>
<b>II.</b>	<b>PURPOSE</b>	<b>4</b>
<b>A.</b>	<b>Operating Procedures</b>	<b>5</b>
<b>B.</b>	<b>Procedures to be Initiated Prior to reaching H2S Contingency Plan Compliance</b>	<b>6</b>
<b>C.</b>	<b>Drilling Below Contingency Plan Depth</b>	<b>7</b>
<b>D.</b>	<b>Procedures program</b>	<b>7</b>
<b>III.</b>	<b>CONDITIONS &amp; H<sub>2</sub>S EMERGENCY PROCEDURES</b>	<b>10</b>
<b>A.</b>	<b>Definition of Operational "Conditions"</b>	<b>10</b>
<b>B.</b>	<b>H2S Emergency Procedures; In Scope Personnel</b>	<b>12</b>
<b>C.</b>	<b>Instructions for Igniting the Well</b>	<b>16</b>
<b>D.</b>	<b>Coring</b>	<b>17</b>
<b>E.</b>	<b>Normal Operations</b>	<b>18</b>
<b>IV.</b>	<b>SAFETY EQUIPMENT</b>	<b>21</b>
<b>V.</b>	<b>TOXICITY OF VARIOUS GASES</b>	<b>23</b>
<b>VI.</b>	<b>PROPERTIES OF GASES</b>	<b>24</b>
<b>VII.</b>	<b>TREATMENT PROCEDURES FOR H<sub>2</sub>S POISONING</b>	<b>25</b>
<b>VIII.</b>	<b>BREATHING AIR EQUIPMENT DRILLS ON/OFF DUTY</b>	<b>26</b>
<b>IX.</b>	<b>HYDROGEN SULFIDE TRAINING CURRICULUM</b>	<b>27</b>
<b>X.</b>	<b>FIT TEST</b>	<b>29</b>
<b>XI.</b>	<b>H<sub>2</sub>S EQUIPMENT LIST</b>	<b>30</b>
<b>XII.</b>	<b>EMERGENCY PHONE NUMBERS</b>	<b>32</b>
<b>XIII.</b>	<b>EVACUATION OF GENERAL PUBLIC</b>	<b>37</b>
<b>XIV.</b>	<b>SEPCO EMERGENCY PHONE NUMBERS AND DIRECTIONS TO WELL SITE</b>	<b>38</b>
<b>XV.</b>	<b>ROE MAP (RADIUS OF EXPOSURE)</b>	<b>39</b>
<b>XVI.</b>	<b>RESIDENCE LIST WITHIN ROE</b>	<b>40</b>

## **INTRODUCTION**

**The H<sub>2</sub>S equipment will be rigged up 2 days prior to reaching a potential H<sub>2</sub>S containing zone. Drilling into any potential H<sub>2</sub>S zone shall not commence until the on-site MRC Drilling Supervisor has confirmed this plan in place.**

**The onsite Drilling Foreman will give Total Safety one week (7 days) notice to prepare for rig up of H<sub>2</sub>S equipment)**

To be effective, the plan requires the cooperation and effort of each person participating in the drilling of an H<sub>2</sub>S well. Each person must know his/her responsibilities and all emergency and safety procedures. He/she should thoroughly understand and be able to use with accuracy, all safety equipment while performing his/her normal duties, if the circumstance should arise. He/she should therefore familiarize himself/herself with the location of all safety equipment and check to see that it is properly stored, easily accessible at all times, and routinely maintained.

It is the intention of MRC ENERGY CO. and the Drilling Contractor to make every effort to provide adequate safeguards against harm to persons on the rig and in the immediate vicinity from the effects of hydrogen sulfide, which may be released into the atmosphere under emergency conditions. However, the initiative rests with the individual in utilizing the safeguards provided. The ideas and suggestions of the individuals involved in the drilling of this well are highly welcomed and act as a fundamental tool for providing the safest working conditions possible.

The drilling representative is required to enforce these procedures. They are set up for your safety and the safety of all others.

## **II. PURPOSE**

It is MRC Energy Co.'s intent to provide a safe working place, not only for its employees, but also for other contractors who are aiding in the drilling of this well. The safety of the general public is of utmost concern. All precautions will be taken to keep a safe working environment and protect the public.

There is a possibility of encountering toxic hydrogen sulfide gas. Safety procedures must be adhered to in order to protect all personnel connected with the operations as well as people living within the area.

The MRC Energy Co. representative will enforce all aspects of the H<sub>2</sub>S Contingency Plan. This job will become easier by a careful study of the following pages and training and informing all personnel that will be working on the well, their duties and responsibilities.

**A. OPERATING PROCEDURES**

**DEFINITIONS:**

**For purpose of this plan, on-site personnel shall be referred to as “In Scope Personnel” or “Out of Scope Personnel”, per the following definitions:**

**In Scope Personnel** – Personnel who will be working or otherwise present in potential H<sub>2</sub>S release areas, including the rig floor, cellar, pits, and shaker areas.

**Out of Scope Personnel** – Personnel who will not be working or Otherwise present in potential H<sub>2</sub>S areas. Such personnel include rig Site visitor, delivery and camp services personnel.

**GENERAL:**

Before this H<sub>2</sub>S contingency plan becomes operational, all regularly assigned In Scope Personnel (primarily the MRC, drilling contractor, and certain service personnel,) shall be thoroughly trained in the use of breathing equipment, emergency procedures, and responsibilities. Total Safety Technician or a designee assigned by the MRC Drilling Foreman shall keep a list of all personnel who have been through the on-site H<sub>2</sub>S training program at the drill site.

All In Scope Personnel shall be given H<sub>2</sub>S training and the steps to be taken during H<sub>2</sub>S conditions under which the well may be drilled. General information will be explained about toxic gases, as well as the physiological effects of H<sub>2</sub>S and the various classified operating conditions. In addition, the reader will be informed his/her general responsibility concerning safety equipment and emergency procedures.

The Total Safety H<sub>2</sub>S Safety Technician or MRC on-site RSE Technician shall make available the H<sub>2</sub>S Contingency Plan for all personnel to review.

Without exception, all personnel that arrive on location must proceed directly to and sign-in with the on-site MRC RSE Technician. In Scope Personnel will be required to complete an on-site H<sub>2</sub>S training and respirator fit testing before starting work, or produce evidence that they have received equivalent training. Out of Scope Personnel will be required to complete a site H<sub>2</sub>S awareness and general safety briefing. This briefing will consist of a H<sub>2</sub>S hazard overview, alarm review and required response to alarms.

**B. PROCEDURES TO BE INITIATED PRIOR TO H<sub>2</sub>S  
CONTINGENCY PLAN COMPLIANCE:**

A list of emergency phone numbers and contacts will be on location and posted at the following locations:

1. MRC ENERGY CO.'S Representative's Office
2. Drilling Contractor's, Toolpusher Office
3. Living Quarters Area

All safety equipment and H<sub>2</sub>S related hardware must be set up as required by MRC Energy Co. with regard to location of briefing areas, breathing equipment, etc. All safety equipment must be inspected periodically (at least weekly) with particular attention to resuscitators and breathing equipment.

In Scope Personnel working in the well site area will be assigned breathing apparatus. Operator and drilling contractor personnel required to work in the following areas will be provided with Self Contained Breathing Apparatus:

1. Rig Floor
2. Mud Pits
3. Derrick
4. Shale Shaker
5. Cellar

The Total Safety H<sub>2</sub>S Safety Technician will be responsible for rigging up all H<sub>2</sub>S continuous monitoring-type detectors. The Total Safety Technician will monitor and bump test the detector units periodically (at least at least once a week to test alarm function during drilling conditions. In the event H<sub>2</sub>S is detected, or when drilling in a zone confirmed to contain H<sub>2</sub>S, the units shall be bump tested at least once every 24 hours. A bump test/calibration log will be kept on location. All results will be reported to the MRC on-site Drilling Foreman.

All Total Safety H<sub>2</sub>S equipment will be maintained and inspected by a Total Safety Technician on at least a Weekly basis.

**C. DRILLING BELOW CONTINGENCY PLAN DEPTH**

H<sub>2</sub>S response drills will be held at least once per week if possible or as often as necessary to acquaint the crews and service company personnel of their responsibilities and the proper procedures to shut-in a well. Initial drills will be performed until crews demonstrate competency donning and working under mask. After the MRC Energy Co.'s representative is satisfied with initial blowout drill procedures, a drill will be conducted weekly with each crew, as necessary. The H<sub>2</sub>S Safety Technician or designee will conduct safety talks and maintain the safety equipment, consult and carry out the instructions of the drilling supervisor. All personnel allowed in the well work area during drilling or testing operations will be instructed in the use of breathing equipment until supervisory personnel are satisfied that they are capable of using it.

After familiarization, each person must perform a drill with breathing equipment. The drill should include getting the breathing equipment, donning the breathing apparatus, and performing expected duties for a short period. A record shall be kept of all personnel drilled and the date of the drill. H<sub>2</sub>S training records will be kept on location for all personnel.

Rig crews and service company personnel shall be made aware of the location of spare air bottles, resuscitation equipment, portable fire extinguishers, H<sub>2</sub>S monitors and detectors. Knowledge of the location of the H<sub>2</sub>S monitors and detectors are vital in determining as our gas location and the severity of the emergency conditions.

After any device has initially detected H<sub>2</sub>S, all areas of poor ventilation shall be inspected periodically by means of a portable H<sub>2</sub>S detector instrument. The buddy system will be utilized. (When an alarm sounds, personnel will don an SCBA, shut the well in, and proceed to SBA for roll call. The H<sub>2</sub>S Technician or designee will mask up, with a buddy and will verify source of H<sub>2</sub>S and report back to the on-site MRC Foreman.)

**D. PROCEDURES PROGRAM**

1. Drill Site
  - a. The drilling rig will be located to allow prevailing winds to blow across the reserve pit.
  - b. A Safe Briefing Area will be provided with a breathing air cascade trailer and or 30-minute SCBA's at the Primary Area. Personnel will assemble at the most up-wind station under alarm conditions, or when so ordered by the MRC Energy Co. representative, the Contractor representative, or

the Total Safety H<sub>2</sub>S Safety Technician. Windssocks or streamers will be anchored to various strategic places on a pole about 10 feet high, so it is in easy view from the rig floor at all times.

- c. Warning signs will be posted on the perimeters. "No Smoking" signs will be posted by MRC Energy Co.as well.
- d. One multi-channel automatic H<sub>2</sub>S monitor will be provided by Total Safety and the detector heads will be at the shale shaker, bell nipple, mud pits, rig floor, and quarter's area. The monitor will be located inside HSE or Company man trailer. Should the alarm be shut off to silence the sirens, the blinker light must continue to warn of H<sub>2</sub>S presence. The Total Safety H<sub>2</sub>S Safety Technician or designee will continuously monitor the detectors and will reactivate the alarm if H<sub>2</sub>S concentrations increase to a dangerous level.
- e. A method of escape will be open at all times.
- f. If available, land line telephone service will be provided or cell phones provided. (Primary communications provided)
- g. A rig communication system will be provided, as needed.
- h. A gas trap, choke manifold, and degasser will be installed.
- i. A kill line, securely anchored and of ample strength, will be laid to the well-head from a safe location. This line is to be used only in an emergency.

#### General

- a. The MRC Energy Co. representative and/or the Contractor's Toolpusher will be available at all times. The drilling supervisor, while on duty, will have complete charge of the rig and location operations and will take whatever action is deemed necessary to insure personnel safety, to protect the well, and to prevent damage.
- b. A Mud Engineer will be on location at all times when drilling takes place at the depth H<sub>2</sub>S may be expected. The mud engineer will be able to verify the presence or absence of H<sub>2</sub>S.



### III. CONDITIONS AND EMERGENCY PROCEDURES

#### A. DEFINITION OF OPERATIONAL "CONDITIONS"

<b>CONDITION I</b>	<b>"POSSIBLE DANGER"</b>
Warning Flags	Green
Alarms	No Alarm. Less than 10 ppm
Characterized By:	Drilling operations in zones that may contain hydrogen sulfide. This condition remains in effect unless H <sub>2</sub> S is detected and it becomes necessary to go to Condition II.
General Action:	<ul style="list-style-type: none"><li>a. Be alert for a condition change</li><li>b. Check all safety equipment for availability and proper functioning.</li><li>c. Perform all drills for familiarization and proficiency.</li></ul>
<b>CONDITION II</b>	<b>"MODERATE DANGER"</b>
Warning Flags	Yellow
Alarms:	Actuates at 10 ppm. Continuous flashing light.
Characterized By:	Drilling operations in zones containing hydrogen sulfide. This condition will remain in effect until adding chemicals to the mud system neutralizes the hydrogen sulfide or it becomes necessary to go to Condition III.
General Action:	<ul style="list-style-type: none"><li>a. Be alert for a condition change</li><li>b. <p>WHEN DRILLING AHEAD - Driller and designated crewmember will don 30 min SCBA, shut-in the well and immediately proceed to the Safe Briefing Area.</p><p>WHEN TRIPPING – Driller and two designated crewmembers will don 30 min SCBA, shut in the well and immediately proceed to the Safe Briefing Area. The Derrickman will</p></li></ul>

don a 5-minute escape pack, descend to the rig floor, don a 30-min SCBA (if necessary) and immediately proceed to the Safe Briefing Area.

- c. All In Scope Personnel will proceed directly to the appropriate Safe Briefing Area.
- d. Remain in safe briefing area, take roll call and wait for instructions
- e. Contact the Total H<sub>2</sub>S Technician if not on location.
- f. Personnel shall ensure that their breathing apparatus is properly fitted and operational before entering an H<sub>2</sub>S contaminated area to provide assistance to anyone who may be injured or overcome by toxic gases.
- g. All Out of Scope Personnel will report to the appropriate Safe Briefing Area.

**CONDITION III "EXTREME DANGER"**

Warning Flags

Red

Alarms

Actuate at 15 ppm. Continuous Sirens and Flashing Lights

Characterized by:

Critical well operations which pose an immediate threat of H<sub>2</sub>S exposure to on-site personnel and a potential threat to the public.

General Action:

- a. **WHEN DRILLING AHEAD -** Driller and designated crewmember will don 30 min SCBA, shut-in the well and immediately proceed to the Safe Briefing Area.

**WHEN TRIPPING –** Driller and two designated crewmembers will don 30

min SCBA, shut in the well and immediately proceed to the Safe Briefing Area. The Derrickman will don a 5-minute escape pack, descend to the rig floor, don a 30-min SCBA (if necessary) and immediately proceed to the Safe Briefing Area.

- b. All In Scope Personnel should don SCBA if nearby and immediately proceed to Safe Briefing Area. If SCBA is not nearby at time of alarm, DO NOT GO TOWARDS RIG AREA, but proceed directly to the Safe Briefing Area
- c. All out of Scope Personnel shall evacuate the location.
- d. Remain in the Safe Briefing Area, take roll call and wait for instructions.
- e. Contact the Total H2S Technician if not on location.
- f. Personnel shall ensure that their breathing apparatus is properly fitted and operational before entering an H<sub>2</sub>S contaminated area to provide assistance to anyone who may be injured or overcome by toxic gases. Use the buddy system.
- g. Remain in safe briefing area, take roll call and wait for instructions.
- h. A cascade breathing air system shall be mobilized and utilized to conduct any additional on rig work required to correct the H<sub>2</sub>S release condition.
- i. If well is ignited do not assume area is safe. SO<sub>2</sub> is hazardous and not all H<sub>2</sub>S will burn.

## **H<sub>2</sub>S EMERGENCY PROCEDURES; IN SCOPE PERSONNEL**

### **A. Day To Day Drilling Operations**

1. Upon discovering a release of H<sub>2</sub>S gas in the ambient air by warning alarms or in any other way **Do Not Panic**.
2. Hold your breath donning the nearest Self Contained Breathing Apparatus and rapidly move up or across-wind away from the areas where H<sub>2</sub>S sensing devices are in place, to the closest available safe briefing area. Continue to use breathing apparatus until it has been determined that the exposure of H<sub>2</sub>S gas in the ambient air no longer exists. **Do Not Panic!**
3. Utilize the "Buddy System", i.e.; select and pair up each person participating in the drilling of an H<sub>2</sub>S well prior to an emergency situation.
4. Help anyone who is overcome or affected by the H<sub>2</sub>S gas by taking him/her up-wind out of the contaminated area. (This should be done utilizing an SCBA and with a buddy.)
5. Take necessary steps to confirm the release of the H<sub>2</sub>S gas into the ambient air.
  - When an H<sub>2</sub>S alarm activates, two designated personnel using the buddy system, while wearing their self contained breathing apparatus, will determine by the read-out on the fixed monitor which sensing device has detected the release of the H<sub>2</sub>S gas.
  - They will utilize the hand-held sniffer type device at the particular sensing point disclosed on the fixed monitor to corroborate the fact that H<sub>2</sub>S gas has actually been released. This will rule out the possibility of a false alarm. This will be done with a buddy and under mask after reporting to the Safe Briefing Area for roll call and instructions by on-site MRC Foreman.
6. Refer to the Emergency Phone Numbers and call emergency personnel.
7. Take the necessary steps to suppress the release of H<sub>2</sub>S gas into the ambient air. Comply with the MRC Energy Co. Representative to physically suppress the release of H<sub>2</sub>S gas at the actual release point.

8. Check all of MRC Energy Co.'s monitoring devices and increase gas-monitoring activities with the portable hand-operated H<sub>2</sub>S and gas detector units.

**Do Not Panic!**

The MRC Energy Co. representative will assess the situation and with assistance of the Contractor's Representative and Total Safety's H<sub>2</sub>S Safety Technician or on site designee, will assign duties to each person to bring the situation under control.

**B. RESPONSIBILITIES OF WELL-SITE PERSONNEL**

In the event of a release of potentially hazardous amounts of H<sub>2</sub>S, all personnel will immediately don their protective breathing apparatus, the well will be shut in and personnel will proceed upwind to the nearest designated safe briefing area for roll call and instructions by MRC Foreman. Consideration will be given to evacuating Out of Scope Personnel, as situation warrants.

**1. MRC ENERGY CO.'S Well-site Representatives**

- a. If MRC Energy Co.'s well-site representative is incapacitated or not on location, this responsibility will fall to the Toolpusher/Driller.
- b. Immediately upon assessing the situation, set this plan into Action by initiating the proper procedures to contain the gas and notify the appropriate people and agencies.
- c. Ensure that the alarm area indicated by the fixed H<sub>2</sub>S Monitor is checked and verified with a portable H<sub>2</sub>S detector. (Safety Technician if on location or MRC assigned designee with a buddy utilizing SCBA's)
- d. Consult Pusher/driller of remedial actions as needed.
- e. Ensure that non-essential personnel proceed to the safe briefing area.
- f. Ensure location entrance barricades are positioned. Keep the number of persons on location to a minimum during hazardous operations.

- g. Consult each contractor, Service Company and all others allowed to enter the site, that H<sub>2</sub>S gas may be encountered and the potential hazards that may exist.
- h. Authorize the evacuation of local residents if H<sub>2</sub>S threatens Their safety.
- i. Non essential personnel should be evacuated from location if Situation warrants.

## **2. Toolpusher**

- a. Toolpusher/Driller will assume responsibilities of MRC Energy Co.'s well-site representative if that person is incapacitated or not on location.
- b. Ensure that the alarm area indicated by the fixed H<sub>2</sub>S monitor is checked and verified with a portable H<sub>2</sub>S gas detector. (Alarm area indicated by the monitor will be Checked by the H<sub>2</sub>S Technician and a buddy, under mask.) This will be done after checking in and roll call at the Upwind Safe Briefing Area.
- c. Confer with MRC Energy Co.'s well-site representative or superintendent and direct remedial action to suppress the H<sub>2</sub>S and control the well.
- d. Ensure that personnel at the safe briefing area are instructed on emergency actions required.
- e. Ensure that personnel at the drill floor area are instructed on emergency actions required.
- f. Ensure that all personnel observe the appropriate safety and emergency procedures.
- g. Ensure that all persons are accounted for and provided emergency assistance as necessary.

**3. Mud Engineer**

- a. Run a sulfide check on the flowline mud.
- b. Take steps to determine the source of the H<sub>2</sub>S and suppress it. Lime and H<sub>2</sub>S scavenger shall be added to the mud as necessary.

**4. Total H<sub>2</sub>S Safety Technician, if on location, or MRC Designee**

- a. H<sub>2</sub>S Safety Technician or designee don nearest SCBA and report to Safe Briefing Area for roll call, take a buddy masked up and check monitor and verify with a portable H<sub>2</sub>S detector the alarm area indicated by the fixed H<sub>2</sub>S monitor. Advise the Toolpusher/Driller and MRC Energy Co.'s well-site representative of findings. Record all findings.
- b. If H<sub>2</sub>S is flared, check for sulfur dioxide (SO<sub>2</sub>) near the flare as necessary. Take hourly readings at different perimeters, log readings and record on location.
- c. Ensure that personnel at the safe briefing area are instructed on emergency actions required.
- d. Ensure that the appropriate warning flags are displayed.
- e. Ensure that all personnel are in S.C.B.A. as necessary.
- f. Ensure that all persons are accounted for and provide emergency assistance as necessary.
- g. Be prepared to evacuate rig if order is issued.

**5. General Personnel & Visitors**

- a. All In Scope Personnel, if not specifically designated to shut the well in or control the well, shall proceed to the (upwind) safe briefing area. All Out of Scope Personnel shall immediately proceed to the appropriate (upwind) safe briefing area or evacuate the site as conditions warrant.

- b. During any emergency, use the "buddy" system to prevent anyone from entering or being left in a gas area alone, even wearing breathing apparatus.
- c. Provide assistance to anyone who may be injured or overcome by toxic gases. Personnel shall ensure that their breathing apparatus is properly fitted and operational before entering a potentially H<sub>2</sub>S contaminated area.
- d. Remain in safe briefing area and wait for instructions.

### **C. INSTRUCTIONS FOR IGNITING THE WELL**

1. The Toolpusher/Driller will confer with MRC Energy Co.'s well-site representative who will secure the approval of the "Texas Wells Delivery Manager, prior to igniting the well, if at all possible.

The Toolpusher/Driller will be responsible for igniting the well in the event of severe well control problems. This decision should be made only as a last resort in situations where it is clear that:

- a. Human life and property are endangered, or
  - b. There is no hope of controlling the well under current conditions.
2. Once the decision has been made, the following procedures should be followed:
    - a. Two people wearing self-contained breathing apparatus will be needed for the actual lighting of the well. They must first establish the flammable perimeter by using an explosimeter. This should be established at 30% to 40% of the lower flammable limits.
    - b. After the flammable perimeter has been established and everyone removed from the area, the ignition team should select a site upwind of the well from which to ignite the well. This site should offer the maximum protection and have a clear path for retreat from the area.



- c. The ignition team should have safety belts and lifeline attached and manned before attempting ignition. If the leak is not ignited on the first attempt, move in 20 to 30 feet and fire again. Continue to monitor with the explosimeter and NEVER fire from an area with over 75% of the Lower Explosive Limit (LEL). If having trouble igniting the well, try firing 40 degrees to 90 degrees on either side of the well.
- d. If ignition is not possible due to the makeup of the gas, the toxic perimeter must be established and evacuation continued until the well is contained.
- e. All personnel must act only as directed by the person in charge of the operations.

NOTE: After the well is ignited, burning hydrogen sulfide ( $H_2S$ ) will convert to sulfur dioxide ( $SO_2$ ), which is also a highly toxic gas.

**DO NOT ASSUME THE AREA IS SAFE AFTER THE WELL IS IGNITED**

**D. CORING PROCEDURES**

Only essential personnel shall be on the rig floor. Ten (10) stands prior to retrieving core barrel; all personnel on drill floor and in derrick shall confirm self-Contained breathing apparatus available and ready for use.

A Total H<sub>2</sub>S Technician will don a SCBA with a buddy assigned from the rig crew, and continuously monitor for H<sub>2</sub>S at each connection. Any levels detected will require operations to be shut down and all involved personnel to don SCBAs. Precautions will remain in place until barrel is laid down.

All involved personnel will don SCBAs when removing the inner barrel from the outer barrel. SCBAs can be removed once the absence of H<sub>2</sub>S is confirmed by the Total H<sub>2</sub>S Technician.

Cores will be appropriately marked and sealed for transportation.

## **Normal Operations**

### **1. Responsibilities of well-site personnel**

#### **a. Well-site Representative**

1. Notify H<sub>2</sub>S Technician of expected date to reach Contingency Plan implementation depth (Two (2) days prior to reaching suspected H<sub>2</sub>S bearing zone) or prior to starting well work.
2. Ensure H<sub>2</sub>S Safety Technician completes rig-up procedures prior to reaching Contingency Plan effective depth.
3. Restrict the number of personnel at the drilling rig or well site to a minimum while drilling, starting well work, testing or coring.
4. Ensure weekly H<sub>2</sub>S drills/training are performed, if possible.

#### **B. Toolpusher**

1. Ensure that necessary H<sub>2</sub>S safety equipment is provided on the rig, and that it is properly inspected and maintained.
2. Ensure that all personnel that work in the well area, are thoroughly trained in the use of H<sub>2</sub>S safety equipment and periodic drills are held to maintain an adequate level of proficiency.

#### **C. In Scope Personnel**

1. Remain clean-shaven. Beards and long sideburns do not allow a proper facepiece seal.
2. Receive H<sub>2</sub>S safety training on location, or confirm prior training by certification that is one year within date.
3. Familiarize yourself with the rig's Contingency Plan.
4. Inspect and practice putting on your breathing apparatus.

5. Know the location of the "safe briefing areas".
6. Keep yourself "wind conscious". Be prepared to quickly move upwind and away in the event of any emergency involving release of H<sub>2</sub>S.

**D. Total Safety H<sub>2</sub>S Safety Technician or MRC Designee**

1. Conduct training as necessary to ensure all personnel working in well area are familiar with the contingency procedures and the operation of emergency equipment.
2. Check all H<sub>2</sub>S safety equipment to ensure that it is ready for emergency use:
  - Check pressure weekly for each shift on breathing apparatus (both 30-minute and hip-packs) to make sure they are charged to full volume.
  - Check pressure on cascade air bottles, if on location, to see that they are capable of recharging breathing apparatus.
  - Check oxygen resuscitator, if on location, to ensure that it is charged to full volume.
  - Check H<sub>2</sub>S detectors weekly for each shift (fixed and portable), and explosimeter, to ensure they are working properly.
3. Provide a weekly report to MRC Energy Co.'s well-site representative documenting:
  - Calibrations performed on H<sub>2</sub>S detectors.
  - Proper location and working order of H<sub>2</sub>S safety equipment.
  - Attendance of all personnel, trained or retrained, and their company.
  - Weekly drills, if held and a list of personnel participating and summary of actions.

**OUT OF SCOPE PERSONNEL**

MRC Energy Co. policy will not require Out of Scope Personnel to be clean shaven, have processed medical questionnaires, fit testing, or have certified H2S Training.

## SAFETY EQUIPMENT

**All respirators will be designed, selected, used and maintained in conformance with ANSI Z88.2, American National Standard for respiratory protection.**

Personal protective equipment must be provided and used. Those who are expected to use respiratory equipment in case of an emergency will be carefully instructed in the proper use and told why the equipment is being used. Careful attention will be given to the minute details in order to avoid possible misuse of the equipment during periods of extreme stress.

Self-contained breathing apparatus provides complete respiratory and eye protection in any concentration of toxic gases and under any condition of oxygen deficiency. The wearer is independent of the surrounding atmosphere because he/she is breathing with a system admitting no outside air. It consists of a full face mask, breathing tube, pressure demand regulator, air supply cylinder, and harness. Pure breathing air from the supply cylinder flows to the mask automatically through the pressure demand regulator which reduces the pressure to a breathing level. Upon inhalation, air flows into the mask at a rate precisely regulated to the user's demand. Upon exhalation, the flow to the mask stops and the exhaled breath passes through a valve in the face piece to the surrounding atmosphere. The apparatus includes an alarm & gauge which warns the wearer to leave the contaminated area for a new cylinder of air or cylinder refill.

The derrickman is provided with a full face piece unit attached to a 5-minute escape cylinder. He will also have his own self-contained 30-minute unit breathing apparatus located on the drilling floor. He will use the 5-minute unit to exit the derrick to the floor, donning the 30-minute unit located on the floor, if needed.

All respiratory protective equipment, when not in use, should be stored in a clean, cool, dry place, and out of direct sunlight to retard the deterioration of rubber parts. After each use, the mask assembly will be scrubbed with soap and water, rinsed thoroughly, and dried. Air cylinders can be recharged to a full condition from a cascade system.

Personnel in each crew will be trained in the proper techniques of bottle filling.

The primary piece of equipment to be utilized, should anyone be overcome by hydrogen sulfide, is the oxygen resuscitator, if on location.

When asphyxiation occurs, the victim must be moved to fresh air and immediately given artificial respiration. In order to assure readiness, the bottles of oxygen will be checked at regular intervals and an extra tank kept on hand.

Hand-operated pump-type detectors incorporating detector tubes will give more accurate readings of hydrogen sulfide. The pump-type draws air to be tested through the detector tube containing lead acetate-silica gel granules. Presence of hydrogen sulfide in the air sample is shown by the development of a dark brown stain on the granules, which is the

scale reading of the concentration of hydrogen sulfide. By changing the type of detector tube used, this detector may also be used for sulfur dioxide (SO<sub>2</sub>) detection when hydrogen sulfide (H<sub>2</sub>S) is being burned in the flare area.

Provisions must be made for the storage of all safety equipment as is evident from the foregoing discussion. All equipment must be stored in an available location so that anyone engaged in normal work situations is no more than "one breath away" from a mask.

## V – TOXICITY OF VARIOUS GASES

<b>Lethal Common Name ppm<sup>4</sup></b>	<b>Chemical Formula</b>	<b>Specific Gravity<sup>1</sup></b>	<b>PEL (OSHA)<sup>2</sup></b>	<b>STEL<sup>3</sup></b>
Hydrogen Cyanide 300	HCN	0.94	10	150
Hydrogen Sulfide 600	H <sub>2</sub> S	1.18	20	Peak- 50ppm
Note: The ACGIH(7) recommends a TWA(6) value of 10ppm as the TLV(5) for H <sub>2</sub> S and an STEL of 15ppm.				
Sulfur Dioxide 1000	SO <sub>2</sub>	2.21	2	5 ppm
Chlorine	CL <sub>2</sub>	2.45	1	
Carbon Monoxide 1000	CO	0.97	35	200/1 Hour
Carbon Dioxide 10%	CO <sub>2</sub>	1.52	5000	5%
Methane	CH <sub>4</sub>	0.55	90000	

<sup>1</sup> Air = 1.0

<sup>2</sup> **Permissible** - Concentration at which is believed that all workers may repeatedly be exposed, day after day, without adverse effect.

<sup>3</sup> **STEL** - Short Term Exposure Limit. A 15-minute time weighted average.

<sup>4</sup> **Lethal** - Concentration that will cause death with short-term exposure.

**TLV** – Threshold Limit Value; a concentration recommended by the American Conference of Governmental Industrial Hygienists (ACGIH)

**TWA** – Time Weighted Average; the average concentration of contaminant one can be exposed to over a given eight-hour period.

**ACGIH** – (American Conference of Governmental Industrial Hygienists) is an organization comprised of Occupational Health Professionals believed by many to be the top experts in the field of Industrial Hygiene. They are recognized as an expert resource by OSHA. The ACGIH releases a bi-annual publication "Threshold Limit Values and Biological Indices" that many safety professionals consider to be the authoritative document on airborne contaminants.

Reference: API RP-49, September 1974 - Reissued August 1978

## VI. PROPERTIES OF GASES

### A. CARBON DIOXIDE

1. Carbon Dioxide (CO<sub>2</sub>) is usually considered inert and is commonly used to extinguish fires. It is 1.52 times heavier than air and will concentrate in low areas of still air. Humans cannot breathe air containing more than 10% CO<sub>2</sub> without losing conscience or becoming disorientation in a few minutes. Continued exposure to CO<sub>2</sub> after being affected will cause convulsions, coma, and respiratory failure.
2. The threshold limit of CO<sub>2</sub> is 5000 ppm. Short-term exposure to 50,000 ppm (5%) is reasonable. This gas is colorless, odorless, and can be tolerated in relatively high concentrations.

### B. HYDROGEN SULFIDE

1. Hydrogen Sulfide (H<sub>2</sub>S) is a colorless, transparent, flammable gas. It is heavier than air and, hence, may accumulate in low places.
2. Although the slightest presence of H<sub>2</sub>S in the air is normally detectable by its characteristic "rotten egg" odor, it is dangerous to rely on the odor as a means of detecting excessive concentrations because the sense of smell is rapidly lost, allowing lethal concentrations to be accumulated without warning. The following table indicates the poisonous nature of H<sub>2</sub>S.

CONCENTRATION			EFFECTS
% H <sub>2</sub> S	PPM	GR/100 SCF <sup>1</sup>	
0.001	10	.65	Safe for 8 hours without respirator. Obvious and unpleasant odor.
0.0015	15	0.975	Safe for 15 minutes of exposure without respirator.
0.01	100	6.48	Kills smell in 3-15 minutes; may sting eyes and throat.
0.02	200	12.96	Kills smell quickly; stings eyes and throat.
0.05	500	32.96	Dizziness; breathing ceases in a few minutes; need prompt artificial respiration.
0.07	700	45.92	Rapid Unconsciousness; death will result if not rescued promptly.
0.1	1000	64.80	Instant unconsciousness, followed by death within minutes.

<sup>1</sup> Grains per 100 Cubic Feet



## VII. Treatment Procedures for Hydrogen Sulfide Poisoning

- A. Remove the victim to fresh air.
- B. If breathing has ceased or is labored, begin resuscitation immediately.  
 Note: This is the quickest and preferred method of clearing victim's lungs of contaminated air; however, under disaster conditions, it may not be practical to move the victim to fresh air. In such instances, where those rendering first aid must continue to wear masks, a resuscitator should be used.
- C. Apply resuscitator to help purge H<sub>2</sub>S from the blood stream.
- D. Keep the victim at rest and prevent chilling.
- E. Get victim under physician's care as soon as possible.

### C. SULPHUR DIOXIDE

1. Sulfur Dioxide (SO<sub>2</sub>) is a colorless, non-flammable, transparent gas.
2. SO<sub>2</sub> is produced during the burning of H<sub>2</sub>S. Although SO<sub>2</sub> is heavier than air, it can be picked up by a breeze and carried downwind at elevated temperatures. Since SO<sub>2</sub> is extremely irritating to the eyes and mucous membranes of the upper respiratory tract, it has exceptionally good warning powers in this respect. The following table indicates the toxic nature of SO<sub>2</sub>:

CONCENTRATION		EFFECTS
% SO <sub>2</sub>	PPM	
0.0005	3 to 5	Pungent odor, normally a person can detect SO <sub>2</sub> in this range.
0.0012	12	Throat irritation, coughing, constriction of the chest, tearing and smarting of eyes.
0.015	150	So irritating that it can only be endured for a few minutes.
.05	500	Causes a sense of suffocation, event with the first breath.

## **VIII. BREATHING AIR EQUIPMENT DRILLS FOR ON & OFF DUTY PERSONNEL**

**An H<sub>2</sub>S Drill and Training Session must be given once a week to ALL on-duty personnel with off duty personnel. On-duty and Off-duty personnel will reverse roles on alternate drills.**

**An H<sub>2</sub>S drill and training session must be given once a week to all off-duty personnel in coincidence with on-duty personnel reversing roles on alternate drills.**

The purpose of this drill is to instruct the crews in the operation and use of breathing air and H<sub>2</sub>S related emergency equipment and to allow the personnel to become acquainted with using the equipment under working conditions. The crews should be trained to put on the breathing air equipment within one minute when required or requested to do so.

The following procedure should be used for weekly drills. The MRC supervisor must be satisfied that the crews are proficient with the equipment.

1. All personnel should be informed that a drill will be held.
2. The Total H<sub>2</sub>S Safety Technician or a designee assigned by the MRC Drilling Foreman should initiate the drill by signaling as he/she would if H<sub>2</sub>S was detected.
3. Personnel should don their breathing apparatus.
4. Once the breathing air equipment is on, the H<sub>2</sub>S Technician should check all personnel to insure proper operation.

A training and information session will be conducted after each drill to answer any H<sub>2</sub>S related questions and to cover any gaps identified from one of the following topics:

- Condition II, and III alerts and steps to be taken by all personnel.
- The importance of wind direction when dealing with H<sub>2</sub>S.
- Proper use and storage of all types of breathing equipment.
- Proper use and storage of oxygen resuscitators.
- Proper use and storage of H<sub>2</sub>S detectors (Mini Checks or equivalent).
- The "buddy system" and the procedure for rescuing a person overcome by H<sub>2</sub>S.
- Responsibilities and duties.
- Location of H<sub>2</sub>S safety equipment.
- Other parts of the "H<sub>2</sub>S Contingency Plan" that should be reviewed.

NOTE: A record of attendance must be kept for weekly drills and training sessions.

## **IX. HYDROGEN SULFIDE TRAINING CURRICULUM**

(FOR EMPLOYERS, VISITORS, AND CONTRACTORS)

EACH PERSON WILL BE INFORMED ON THE RESTRICTIONS OF HAVING BEARDS AND CONTACT LENS. THEY WILL ALSO BE INFORMED OF THE AVAILABILITY OF SPECTACLE KITS.

AFTER THE H2S EQUIPMENT IS RIGGED UP, ALL IN SCOPE PERSONNEL WILL BE H2S TRAINED AND PUT THROUGH A DRILL. ANY DEFICIENCIES WILL BE CORRECTED.

Training Completion cards are good for one year and will indicate date of completion or expiration. Personnel previously trained on another facility and visiting, must attend a "supplemental briefing" on H2S equipment and procedures before beginning duty. Visitors who remain on the location more than 24 hours must receive full H2S training given all crew members. A "supplemental briefing" will include but not be limited to: Location of respirators, familiarization with safe briefing areas, alarms with instruction on responsibilities in the event of a release and hazards of H2S and (SO2, if applicable). A training and drill log will be kept.

Topics for full H2S training shall include the following equipment if on location, but not be limited to the following:

1. **Brief Introduction on H2S**
  - A. Slide or Computer presentation (If Available)
  - B. H2S material will be distributed
  - C. Re-emphasize the properties, toxicity, and hazards of H2S
  - D. Source of SO2 (if applicable)
2. **H2S Detection**
  - A. Description of H2S sensors
  - B. Description of warning system (how it works & it's location)
  - C. Actual location of H2S sensors
  - D. Instruction on use of pump type detector (Gastec)
  - E. Use of card detectors, ampoules, or dosimeters
  - F. Use of combustible gas detector
  - G. Other personnel detectors used
  - H. Alarm conditions I & II,
  - I. SO2 alarms (if applicable)

3. **H2S Protection**

- A. Types of breathing apparatus provided (30-minute SCBA & 5-minute SCBA (with voice diaphragms for communication if supplied))
- B. Principle of how breathing apparatus works
- C. Demonstration on how to use breathing apparatus
- D. Location of breathing apparatus

4. **Cascade System**

- A. Description of cascade system
- B. How system works
- C. Cascade location of rig with reference to briefing areas
- D. How to use cascade system (with 5-minute hose work line units & refill, if supplied)
- E. Importance of wind direction and actual location of Windssocks
- F. Purpose of compressor/function (if one is on site)

5. **H2S Rescue and First Aid**

- A. Importance of wind direction
- B. Safe briefing area
- C. Buddy system
- D. H2S symptoms
- E. Methods of rescue

6. **Hands on Training**

- A. Donning/familiarization of SCBA 30-minute unit
- B. Donning/familiarization of SKADA 5- MIN. Packs
- C. Familiarization of cascades
- D. Use of O2 resuscitator
- E. Alarm conditions - upwind briefing areas, etc...
- F. Duties and responsibilities of all personnel
- G. Procedures for evacuation
- H. Search and Rescue teams

7. **Certification**

- A. Testing on material covered

## TOTAL SAFETY US INC., FIT TEST

### X. EMPLOYEE INFORMATION

Employee Name: \_\_\_\_\_ Date: \_\_\_\_\_

Date of Employee Medical Evaluation: \_\_\_\_\_

Medical Status (circle):      Unrestricted      Limitations on Use      Use Not  
Authorized

### RESPIRATOR INFORMATION

Respirator Type (Dustmask, SCBA, etc): \_\_\_\_\_

Brand: \_\_\_\_\_

Size: (circle):      XS      S      M      L      XL

### FIT TEST INFORMATION

Type of Fit Test Performed:

#### Quantitative

Porta Count  
Fittester 3000

Fit Factor: \_\_\_\_\_  
Fit Factor: \_\_\_\_\_

#### Qualitative

Irritant Smoke  
Isoamyl Acetate (Banana Oil)  
Saccharin  
Bitrex

Passed / Failed  
Passed / Failed  
Passed / Failed  
Passed / Failed

I hereby certify that this fittest was conducted in accordance with the OSHA Fit Testing Protocols found in Appendix A of 1910.134.

Fit Tester Name (Print): \_\_\_\_\_

Signature: \_\_\_\_\_ Date: \_\_\_\_\_

## **XI. H<sub>2</sub>S SAFETY SERVICES**

HYDROGEN SULFIDE SAFETY PACKAGE – Contained on location in Total Safety H<sub>2</sub>S Equipment Trailer, unless otherwise noted:

### **RESPIRATORY SAFETY SYSTEMS**

<b>QTY</b>	<b>DESCRIPTION</b>
------------	--------------------

- |    |   |
|----|---|
| 12 | 30-Minute Pressure Demand SCBA<br>(4-Primary Safe Briefing Area, 4-Secondary Safe Briefing Area, 4-floor with one of these for derrick man) |
| 9  | Hose Line 5-minute Work Unit w/Escape Cylinder (1 in derrick, 6 on drill floor, 1 in mud pit wt area, 1 in shaker area)                     |

The following shall be part of the package if requested by the MRC Foremen (at least one trailer with cascade system is required to be located in the MRC Magnolia asset for use as needed)

- |     |   |
|-----|---|
| 1   | Breathing air cascade of 10 bottles w/regulator                       |
| 2   | Refill lines to refill 30-minute units on location                    |
| 1   | 6-Man manifold that can be rigged up to work area on floor, if needed |
| 6   | 25 foot hose lines  |
| 2   | 50 foot hose lines  |
| 100 | Feet of hose line to rig cascade up to 12 man manifold on floor       |
| 12  | 30-minute Self Contained Breathing apparatus                          |

### **DETECTION AND ALARM SAFETY SYSTEM**

- |   |   |
|---|---|
| 1 | H <sub>2</sub> S Fixed Monitor w/8Channels (Loc determined at rig up) suggested.<br>(Mud pit area, shaker area, bell nipple area, floor/driller area, & outside quarters) |
| 5 | H <sub>2</sub> S Sensors  |
| 3 | Explosion Proof Alarms (Light and Siren) .<br>(1 on floor, 1 in work area, 1 in trailer area where quarters are located)  |
| 2 | Personal H <sub>2</sub> S monitors  |
| 1 | Portable Tri-Gas Hand Held Meter (O <sub>2</sub> , LEL, H <sub>2</sub> S)   |
| 1 | Sensidyne/Gastech Manual Pump Type Detector   |
| 8 | Boxes H <sub>2</sub> S Tubes Various Ranges   |
| 2 | Boxes SO <sub>2</sub> Tubes Various Ranges  |
| 1 | Calibration Gas   |
| 1 | Set Paper Work for Records: Training, Cal, Inspection, other  |

**ADDITIONAL SAFETY RELATED EQUIPMENT**

**QTY DESCRIPTION**

2	Windssocks with Pole and Bracket
1	Set Well Condition Sign w/Green, Yellow, Red Flags
1	Primary Safe Briefing Area Sign
1	Secondary Safe Briefing Area Sign
6	Operating Condition Signs for Work Areas & Living Quarters

**TRAILER WITH BREATHING AIR CASCADE WILL  
ALSO INCLUDE THE FOLLOWING:**

This equipment will be part of the H2S equipment stored in the trailer, when on location

1	First aid kit
1	Fire Blanket
1	Eye wash station
2	Safety Harness w/150' safety line

## **XII. EMERGENCY PHONE NUMBERS (Updated March 18, 2009)**

### **EMERGENCY PHONE NUMBERS**

MRC Energy Co. Emergency Phone #

MRC Energy Co. Permian Operations Phone-----

**MRC Energy Co. Production**

113 Daw Rd

Mansfield LA 71052

<b>Title</b>	<b>Names</b>	<b>Phone</b>	<b>Cell</b>
Operations Manager			
Operation Supt.			
Operations Supervisor			
Operations Supervisor			
Office Supervisor			
HSE			
Scheduler Planner			

#### **Hydrogen Sulfide Safety Consultants**

Total Safety W. Bender Blvd. Hobbs, NM	575-392-2973	After Hours 24 Hour Call Center Through Office Number
Tommy Throckmorton Operations Manager	575-392-2973	940-268-9614
Rodney Jourdan Sales Contact	575-392-2973	432-349-3928



**MRC Energy Co. MEDICAL RESPONSE PLAN AND IT'S MEDICAL  
PROTOCOLS WILL BE FOLLOWED**

**MEDICAL COORDINATOR # -----**

Emergency Numbers & Directions

**Hospitals (911)**

<b>Artesia General Hospital 702 N. 13<sup>th</sup> St. Artesia, NM 88210</b>	<b>Main Phone Number</b>	<b>575-748-3333</b>
<b>Nor-Lea General Hospital 1600 N. Main Ave. Lovington, NM 88260</b>	<b>Main Phone Number</b>	<b>575-396-6611</b>
<b>Lea Regional Medical Center 5419 N. Lovington Hwy Hobbs, NM 88240</b>	<b>Main Phone Number</b>	<b>575-492-5260</b>
<b>Carlsbad General Hospital 2430 W. Pierce St. Carlsbad, NM</b>	<b>Main Phone Number</b>	<b>575-887-4100</b>
<b>Lovelace Regional Hospital 117 E. 19<sup>th</sup> St Roswell, NM 88201</b>	<b>Main Phone Number</b>	<b>575-627-7000</b>
<b>Winkler Co. Memorial Hospital 821 Jeffee Dr. Kermit, Texas 79745</b>	<b>Main Phone Number</b>	<b>432-586-8299</b>
<b>Reeves County Hospital 2323 Texas St. Pecos, Texas 79772</b>	<b>Main Phone Number</b>	<b>432-447-3551</b>

**State Police (911)**

<b>Texas DPS Loving co. 225 N.Pecos Mentone, Texas 79754</b>	<b>Office Number</b>	<b>432-377-2411</b>
<b>Texas DPS Winkler Co. 100 E Winkler Kermit, Texas 79745</b>	<b>Office Number</b>	<b>432-586-3465</b>
<b>Texas DPS Pecos Co. 148 N I-20 Frontage RD Pecos, Texas 79772</b>	<b>Office Number</b>	<b>432-447-3532</b>
<b>New Mexico State Police 3300 W. Main St Artesia, NM</b>	<b>Office Number</b>	<b>575-748-9718</b>
<b>New Mexico State Police 304 N. Canyon St Carlsbad, NM 88220</b>	<b>Office Number</b>	<b>575-885-3137</b>
<b>New Mexico State Police 5100 Jack Gomez Blvd. Hobbs, NM 88240</b>	<b>Office Number</b>	<b>575-392-5588</b>

**Local Law Enforcement (911) (Sheriff)**

<b>Reeves Co. Sheriff 500 N. Oak ST Pecos, Texas 79722</b>	<b>Office Number</b>	<b>432-445-4901</b>
<b>Winkler Co. Sheriff 1300 Bellaire St. Kermit, Texas 79745</b>	<b>Office Number</b>	<b>432-586-3461</b>
<b>Loving Co. Sheriff Courthouse Mentone, Texas</b>	<b>Office Number</b>	<b>432-377-2411</b>
<b>Lea Co. Sheriff 1417 S. Commercial St. Lovington, NM 88260</b>	<b>Office Number</b>	
<b>Eddy Co. Sheriff 305 N 7th St. Artesia, NM 88210</b>	<b>Office Number</b>	<b>575-766-9888</b>
<b>Eddy Co. Sheriff 305 N 7th St. Carlsbad, NM 88220</b>	<b>Office Number</b>	<b>575-746-9888</b>

## Federal &amp; State Agencies

<b>OSHA Lubbock Area Office</b> <b>1205 Texas Av. Room 806</b> <b>Lubbock, Texas 79401</b>	<b>Main Number</b>	<b>806-472-7681 EXT 7685</b>
<b>New Mexico Environment Department</b> <b>400 N Pennsylvania</b> <b>Roswell, NM 88201</b>	<b>Joe Fresquez</b>	<b>575-623-3935</b>
<b>Texas Railroad Commission</b> <b>Midland, Texas</b>	<b>Main Number</b>	<b>844-773-0305</b>
<b>BLM Carlsbad, NM Field Office</b> <b>620 E. Green ST</b> <b>Carlsbad, NM 88220</b>	<b>Main Number</b>	<b>575-234-5972</b>
<b>BLM Hobbs Field Station</b> <b>414 W. Taylor Rd.</b> <b>Hobbs, NM 88240</b>	<b>Main Number</b>	<b>575-393-3612</b>
<b>BLM Roswell District Office</b> <b>2909 W. Second St.</b> <b>Roswell, NM 88201</b>	<b>Main Number</b>	<b>575-627-0272</b>
<b>TECQ Texas Commission on Environmental Quality</b>	<b>Main Number</b>	<b>800-832-8224</b>
<b>New Mexico OCD</b>		
<b>U.S. Environmental Protection Agency Region 6</b> <b>Texas/New Mexico</b>	<b>Main Number</b>	<b>214-655-2222</b>
<b>National Response Center Toxic Chemicals &amp; Oil Spills</b>	<b>Main Number</b>	<b>800-424-8802</b>

## Rig Company


### **XIII. EVACUATION OF THE GENERAL PUBLIC**

The procedure to be used in alerting nearby persons in the event of any occurrence that could pose a threat to life or property will be arranged and completed with public officials in detail, prior to drilling into the hydrogen sulfide formations.

In the event of an actual emergency, the following steps will be immediately taken:

1. The MRC Energy Co.'s representative will dispatch sufficient personnel to immediately warn each resident and transients down-wind within radius of exposure from the well site. Then warn all residence in the radius of exposure. Additional evacuation zones may be necessary as the situation warrants.
2. The MRC Energy Co.'s representative will immediately notify proper authorities, including the Sheriff's Office, Highway Patrol, and any other public officials as described above and will enlist their assistance in warning residents and transients in the calculated radius of exposure.
3. The MRC Energy Co.'s representative will dispatch sufficient personnel to divert traffic in the vicinity away from the potentially dangerous area. A guard to the entrance of the well site will be posted to monitor essential and non essential traffic.
4. General:
  - A. The area included within the radius of exposure is considered to be the zone of maximum potential hazard from a hydrogen sulfide gas escape. Immediate evacuation of public areas, in accordance with the provisions of this contingency plan, is imperative. When it is determined that conditions exist which create an additional area (beyond the initial zone of maximum potential hazard) vulnerable to possible hazard, public areas in the additional hazardous area will be evacuated in accordance with the contingency plan.
  - B. In the event of a disaster, after the public areas have been evacuated and traffic stopped, it is expected that local civil authorities will have arrived and within a few hours will have assumed direction of and control of the public, including all public areas. MRC Energy Co. will cooperate with these authorities to the fullest extent and will exert every effort by careful advice to such authorities to prevent panic or rumors.
  - C. MRC Energy Co. will dispatch appropriate management personnel at the disaster site as soon as possible. The company's personnel

will cooperate with and provide such information to civil authorities as they might require.

- D. One of the products of the combustion of hydrogen sulfide is sulfur dioxide (SO<sub>2</sub>). Under certain conditions this gas may be equally as dangerous as H<sub>2</sub>S. A pump type detector device, which determines the percent of SO<sub>2</sub> in air through concentrations in ppm, will be available. Although normal air movement is sufficient to dissipate this material to safe levels, the SO<sub>2</sub> detector should be utilized to check concentrations in the proximity of the well once every hour, or as necessary and the situation warrants. Also, if any low areas are suspected of having high concentrations, personnel should be made aware of these areas, and steps should be taken to determine whether or not these low areas are hazardous.

Exhibit E-6: H2S Contingency Plan Emergency Contacts  
Matador Resources Company

Company Office			
Matador Resources Company		(972)-371-5200	
Key Personnel			
Name	Title	Office	Mobile
Billy Goodwin	Vice President Drilling	972-371-5210	817-522-2928
Gary Martin	Drilling Superintendent		601-669-1774
Dee Smith	Drilling Superintendent	972-371-5447	972-822-1010
Blake Hermes	Drilling Engineer	972-371-5485	713-876-8558
	Construction Superintendent		
	Construction Superintendent		
Artesia			
Ambulance		911	
State Police		575-746-2703	
City Police		575-746-2703	
Sheriff's Office		575-746-9888	
Fire Department		575-746-2701	
Local Emergency Planning Committee		575-746-2122	
New Mexico Oil Conservation Division		575-748-1283	
Carlsbad			
Ambulance		911	
State Police		575-885-3137	
City Police		575-885-2111	
Sheriff's Office		575-887-7551	
Fire Department		575-887-3798	
Local Emergency Planning Committee		575-887-6544	
New Mexico Oil Conservation Division		575-887-6544	
Santa Fe			
New Mexico Emergency Response Comission (Santa Fe)		505-476-9600	
New Mexico Emergency Response Comission (Santa Fe) 24 hrs		505-827-9126	
New Mexico State Emergency Operations Center		505-476-9635	
National			
National Emegncy Response Center (Washington, D.C.)		800-424-8802	
Medical			
Flight for Life- 4000 24th St.; Lubbock, TX		806-743-9911	
Aerocare- R3, Box 49F; Lubbock, TX		806-747-8923	
Med Flight Air Amb- 2301 Yale Blvd S.E., D3; Albuquerque, NM		505-842-4433	
SB Air Med Service- 2505 Clark Carr Loop S.E.; Albuquerque, NM		505-842-4949	
Other			
Boots & Coots IWC		800-256-9688	or 281-931-8884
Cudd Pressure Control		432-699-0139	or 432-563-3356
Haliburton		575-746-2757	
B.J. Services		575-746-3569	

**Operator Name:** MATADOR PRODUCTION COMPANY

**Well Name:** BOROS FEDERAL

**Well Number:** 124H

**Source land ownership:** FEDERAL

**Source transportation land ownership:** FEDERAL

**Water source volume (barrels):** 300000

**Source volume (acre-feet):** 38.66793

**Source volume (gal):** 12600000

---

**Water source and transportation map:**

PossibleFreshwaterWells\_BorosFederal\_20190513115250.pdf

**Water source comments:** Freshwater source has not yet been chosen

**New water well?** NO

**New Water Well Info**

**Well latitude:**

**Well Longitude:**

**Well datum:**

**Well target aquifer:**

**Est. depth to top of aquifer(ft):**

**Est thickness of aquifer:**

**Aquifer comments:**

**Aquifer documentation:**

**Well depth (ft):**

**Well casing type:**

**Well casing outside diameter (in.):**

**Well casing inside diameter (in.):**

**New water well casing?**

**Used casing source:**

**Drilling method:**

**Drill material:**

**Grout material:**

**Grout depth:**

**Casing length (ft.):**

**Casing top depth (ft.):**

**Well Production type:**

**Completion Method:**

**Water well additional information:**

**State appropriation permit:**

**Additional information attachment:**

**Section 6 - Construction Materials**

**Using any construction materials:** NO

**Construction Materials description:**

**Construction Materials source location attachment:**

**Operator Name:** MATADOR PRODUCTION COMPANY

**Well Name:** BOROS FEDERAL

**Well Number:** 124H

### Section 7 - Methods for Handling Waste

**Waste type:** DRILLING

**Waste content description:** drill cuttings, mud, salts, other chemicals, trash, human waste

**Amount of waste:** 1000 barrels

**Waste disposal frequency :** Daily

**Safe containment description:** Drill cuttings, mud, salts and other chemicals will be placed in steel tanks. Trash will be placed in portable trash cage. Human waste will be disposed of in chemical toilets.

**Safe containmant attachment:**

**Waste disposal type:** OTHER

**Disposal location ownership:** OTHER

**Disposal type description:** Private/public

**Disposal location description:** Steel tanks to BLM approved disposal site; trash cage to Carlsbad landfill; chemical toilets to Carlsbad wastewater treatment plant.

### Reserve Pit

**Reserve Pit being used?** NO

**Temporary disposal of produced water into reserve pit?**

**Reserve pit length (ft.)**

**Reserve pit width (ft.)**

**Reserve pit depth (ft.)**

**Reserve pit volume (cu. yd.)**

**Is at least 50% of the reserve pit in cut?**

**Reserve pit liner**

**Reserve pit liner specifications and installation description**

### Cuttings Area

**Cuttings Area being used?** NO

**Are you storing cuttings on location?** YES

**Description of cuttings location** Cuttings will be stored in steel pits before being trucked to authorized disposal facility.

**Cuttings area length (ft.)**

**Cuttings area width (ft.)**

**Cuttings area depth (ft.)**

**Cuttings area volume (cu. yd.)**

**Is at least 50% of the cuttings area in cut?**

**WCuttings area liner**

**Cuttings area liner specifications and installation description**



**Operator Name:** MATADOR PRODUCTION COMPANY

**Well Name:** BOROS FEDERAL

**Well Number:** 124H

### Section 8 - Ancillary Facilities

**Are you requesting any Ancillary Facilities?:** NO

**Ancillary Facilities attachment:**

**Comments:**

### Section 9 - Well Site Layout

**Well Site Layout Diagram:**

Boros\_Federal\_Slot\_\_4\_Location\_Layout\_20190513115335.pdf

**Comments:**

### Section 10 - Plans for Surface Reclamation

**Type of disturbance:** No New Surface Disturbance    **Multiple Well Pad Name:** SLOT 4

**Multiple Well Pad Number:** 11

**Recontouring attachment:**

**Drainage/Erosion control construction:** crowned and ditched

**Drainage/Erosion control reclamation:** harrowed on the contour

**Well pad proposed disturbance (acres):** 0

**Road proposed disturbance (acres):** 0

**Powerline proposed disturbance (acres):** 0

**Pipeline proposed disturbance (acres):** 0

**Other proposed disturbance (acres):** 0

**Total proposed disturbance:** 0

**Well pad interim reclamation (acres):**

**Road interim reclamation (acres):**

**Powerline interim reclamation (acres):** 0

**Pipeline interim reclamation (acres):**

**Other interim reclamation (acres):**

**Total interim reclamation:**

**Well pad long term disturbance (acres):**

**Road long term disturbance (acres):**

**Powerline long term disturbance (acres):** 0

**Pipeline long term disturbance (acres):**

**Other long term disturbance (acres):**

**Total long term disturbance:**

**Disturbance Comments:**

**Reconstruction method:** Interim reclamation will consist of shrinking well pads and facility sites by roughly a third. Disturbed areas will be recontoured. Stored soil and brush will be respread and harrowed. Reseeding will be conducted per BLM requirements.

**Topsoil redistribution:** Stockpiled topsoil will be retained along edges of pads, to be used to cover pads, facility site and other disturbances when wells are plugged. Once last well is plugged pads and roads will be reclaimed within 6 months. Noxious weeds will be controlled

**Soil treatment:** none

**Existing Vegetation at the well pad:**

**Existing Vegetation at the well pad attachment:**

**Operator Name:** MATADOR PRODUCTION COMPANY

**Well Name:** BOROS FEDERAL

**Well Number:** 124H

**Existing Vegetation Community at the road:**

**Existing Vegetation Community at the road attachment:**

**Existing Vegetation Community at the pipeline:**

**Existing Vegetation Community at the pipeline attachment:**

**Existing Vegetation Community at other disturbances:**

**Existing Vegetation Community at other disturbances attachment:**

**Non native seed used?** NO

**Non native seed description:**

**Seedling transplant description:**

**Will seedlings be transplanted for this project?** NO

**Seedling transplant description attachment:**

**Will seed be harvested for use in site reclamation?** NO

**Seed harvest description:**

**Seed harvest description attachment:**

## Seed Management

### Seed Table

**Seed type:**

**Seed source:**

**Seed name:**

**Source name:**

**Source address:**

**Source phone:**

**Seed cultivar:**

**Seed use location:**

**PLS pounds per acre:**

**Proposed seeding season:**

### Seed Summary

**Total pounds/Acre:**

Seed Type	Pounds/Acre
-----------	-------------

**Seed reclamation attachment:**

**Operator Name:** MATADOR PRODUCTION COMPANY

**Well Name:** BOROS FEDERAL

**Well Number:** 124H

**Operator Contact/Responsible Official Contact Info**

**First Name:**

**Last Name:**

**Phone:**

**Email:**

**Seedbed prep:**

**Seed BMP:**

**Seed method:**

**Existing invasive species?** NO

**Existing invasive species treatment description:**

**Existing invasive species treatment attachment:**

**Weed treatment plan description:** to BLM standards

**Weed treatment plan attachment:**

**Monitoring plan description:** to BLM standards

**Monitoring plan attachment:**

**Success standards:** to BLM satisfaction

**Pit closure description:** no pit

**Pit closure attachment:**

**Section 11 - Surface Ownership**

**Disturbance type:** WELL PAD

**Describe:**

**Surface Owner:** BUREAU OF LAND MANAGEMENT

**Other surface owner description:**

**BIA Local Office:**

**BOR Local Office:**

**COE Local Office:**

**DOD Local Office:**

**NPS Local Office:**

**State Local Office:**

**Military Local Office:**

**USFWS Local Office:**

**Other Local Office:**

**USFS Region:**

**USFS Forest/Grassland:**

**USFS Ranger District:**

**Operator Name:** MATADOR PRODUCTION COMPANY

**Well Name:** BOROS FEDERAL

**Well Number:** 124H

### Section 12 - Other Information

**Right of Way needed?** NO

**Use APD as ROW?**

**ROW Type(s):**

#### ROW Applications

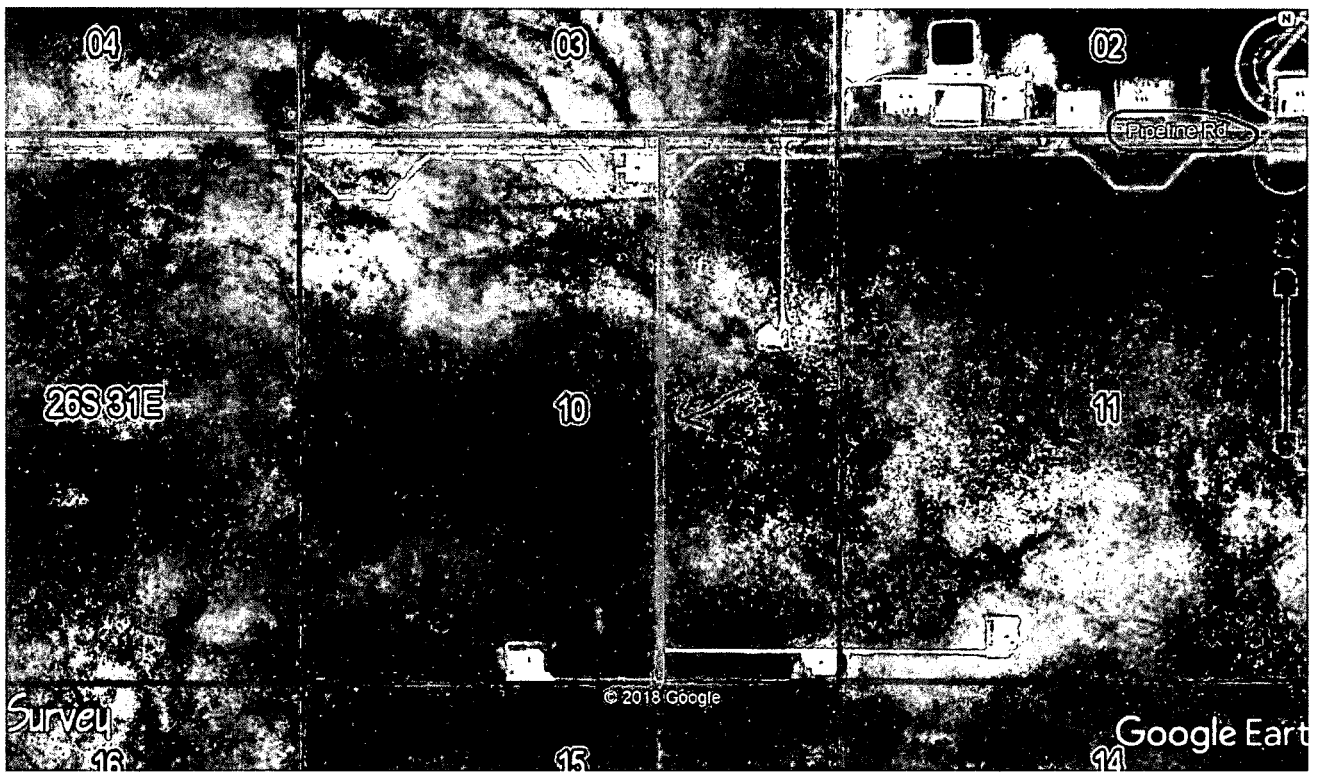
**SUPO Additional Information:**

**Use a previously conducted onsite?** YES

**Previous Onsite information:** Jesse B. conducted onsite on 1/23/19

#### Other SUPO Attachment

MasterSUPO\_BorosFederalWellProject\_Plats\_20190513115432.pdf





U.S. Department of the Interior  
BUREAU OF LAND MANAGEMENT

## Bond Info Data Report

12/04/2019

APD ID: 10400041808

Submission Date: 05/14/2019

Highlighted data  
reflects the most  
recent changes

Operator Name: MATADOR PRODUCTION COMPANY

Well Name: BOROS FEDERAL

Well Number: 124H

[Show Final Text](#)

Well Type: OIL WELL

Well Work Type: Drill

### Bond Information

Federal/Indian APD: FED

BLM Bond number: NMB001079

BIA Bond number:

Do you have a reclamation bond? NO

Is the reclamation bond a rider under the BLM bond?

Is the reclamation bond BLM or Forest Service?

BLM reclamation bond number:

Forest Service reclamation bond number:

Forest Service reclamation bond attachment:

Reclamation bond number:

Reclamation bond amount:

Reclamation bond rider amount:

Additional reclamation bond information attachment:

