

RECEIVED

DEC 10 2019

Form 3160-3
(June 2015)

UNITED STATES DISTRICT COURT / ARTESIA, C.D.
DEPARTMENT OF THE INTERIOR
BUREAU OF LAND MANAGEMENT

APPLICATION FOR PERMIT TO DRILL OR REENTER

FORM APPROVED
OMB No. 1004-0137
Expires: January 31, 2018

1a. Type of work: <input checked="" type="checkbox"/> DRILL <input type="checkbox"/> REENTER		5. Lease Serial No. NMNM018613A	
1b. Type of Well: <input type="checkbox"/> Oil Well <input checked="" type="checkbox"/> Gas Well <input type="checkbox"/> Other		6. If Indian, Allottee or Tribe Name	
1c. Type of Completion: <input type="checkbox"/> Hydraulic Fracturing <input checked="" type="checkbox"/> Single Zone <input type="checkbox"/> Multiple Zone		7. If Unit or CA Agreement, Name and No.	
2. Name of Operator MATADOR PRODUCTION COMPANY		8. Lease Name and Well No. NOEL HENSLEY, FED COM 201H	
3a. Address 5400 LBJ Freeway, Suite 1500 Dallas TX 75240		9. API Well No. 30-015-46496	
3b. Phone No. (include area code) (972)371-5200		10. Field and Pool, or Exploratory PURPLE SAGE WOLFCAMP GAS	
4. Location of Well (Report location clearly and in accordance with any State requirements. *) At surface NENW / 250 FNL / 1381 FWL / LAT 32.2097364 / LONG -104.1310352 At proposed prod. zone SWSW / 240 FSL / 330 FWL / LAT 32.1964391 / LONG -104.1344333		11. Sec., T, R, M, or Blk. and Survey or Area SEC 19 / T24S / R28E / NMP	
14. Distance in miles and direction from nearest town or post office*		12. County or Parish EDDY	13. State NM
15. Distance from proposed* location to nearest property or lease line, ft. (Also to nearest drig. unit line, if any) 250 feet	16. No of acres in lease 760.24	17. Spacing Unit dedicated to this well 320.32	
18. Distance from proposed location* to nearest well, drilling, completed, applied for, on this lease, ft. 1540 feet	19. Proposed Depth 9302 feet / 14166 feet	20. BLM/BIA Bond No. in file FED: NMB001079	
21. Elevations (Show whether DF, KDB, RT, GL, etc.) 3099 feet	22. Approximate date work will start* 02/01/2020	23. Estimated duration 30 days	
24. Attachments			
The following, completed in accordance with the requirements of Onshore Oil and Gas Order No. 1, and the Hydraulic Fracturing rule per 43 CFR 3162.3-3 (as applicable)			
1. Well plat certified by a registered surveyor.		4. Bond to cover the operations unless covered by an existing bond on file (see Item 20 above).	
2. A Drilling Plan.		5. Operator certification.	
3. A Surface Use Plan (if the location is on National Forest System Lands, the SUPO must be filed with the appropriate Forest Service Office).		6. Such other site specific information and/or plans as may be requested by the BLM.	
25. Signature (Electronic Submission)		Name (Printed/Typed) Cade LaBolt / Ph: (972)629-2158	Date 04/05/2019
Title Associate Landman			
Approved by (Signature) (Electronic Submission)		Name (Printed/Typed) Christopher Walls / Ph: (575)234-2234	Date 12/09/2019
Title Petroleum Engineer		Office CARLSBAD	
Application approval does not warrant or certify that the applicant holds legal or equitable title to those rights in the subject lease which would entitle the applicant to conduct operations thereon. Conditions of approval, if any, are attached.			
Title 18 U.S.C. Section 1001 and Title 43 U.S.C. Section 1212, make it a crime for any person knowingly and willfully to make to any department or agency of the United States any false, fictitious or fraudulent statements or representations as to any matter within its jurisdiction.			

APPROVED WITH CONDITIONS
Approval Date: 12/08/2019

RW 12-18-19

(Continued on page 2)

*(Instructions on page 2)

Need GCP

INSTRUCTIONS

GENERAL: This form is designed for submitting proposals to perform certain well operations, as indicated on Federal and Indian lands and leases for action by appropriate Federal agencies, pursuant to applicable Federal laws and regulations. Any necessary special instructions concerning the use of this form and the number of copies to be submitted, particularly with regard to local, area, or regional procedures and practices, either are shown below or will be issued by, or may be obtained from local Federal offices.

ITEM 1: If the proposal is to redrill to the same reservoir at a different subsurface location or to a new reservoir, use this form with appropriate notations. Consult applicable Federal regulations concerning subsequent work proposals or reports on the well.

ITEM 4: Locations on Federal or Indian land should be described in accordance with Federal requirements. Consult local Federal offices for specific instructions.

ITEM 14: Needed only when location of well cannot readily be found by road from the land or lease description. A plat, or plats, separate or on the reverse side, showing the roads to, and the surveyed location of, the well, and any other required information, should be furnished when required by Federal agency offices.

ITEMS 15 AND 18: If well is to be, or has been directionally drilled, give distances for subsurface location of hole in any present or objective productive zone.

ITEM 22: Consult applicable Federal regulations, or appropriate officials, concerning approval of the proposal before operations are started.

ITEM 24: If the proposal will involve hydraulic fracturing operations, you must comply with 43 CFR 3162.3-3, including providing information about the protection of usable water. Operators should provide the best available information about all formations containing water and their depths. This information could include data and interpretation of resistivity logs run on nearby wells. Information may also be obtained from state or tribal regulatory agencies and from local BLM offices.

NOTICES

The Privacy Act of 1974 and regulation in 43 CFR 2.48(d) provide that you be furnished the following information in connection with information required by this application.

AUTHORITY: 30 U.S.C. 181 et seq., 25 U.S.C. 396; 43 CFR 3160

PRINCIPAL PURPOSES: The information will be used to: (1) process and evaluate your application for a permit to drill a new oil, gas, or service well or to reenter a plugged and abandoned well; and (2) document, for administrative use, information for the management, disposal and use of National Resource Lands and resources including (a) analyzing your proposal to discover and extract the Federal or Indian resources encountered; (b) reviewing procedures and equipment and the projected impact on the land involved; and (c) evaluating the effects of the proposed operation on the surface and subsurface water and other environmental impacts.

ROUTINE USE: Information from the record and/or the record will be transferred to appropriate Federal, State, and local or foreign agencies, when relevant to civil, criminal or regulatory investigations or prosecution, in connection with congressional inquiries and for regulatory responsibilities.

EFFECT OF NOT PROVIDING INFORMATION: Filing of this application and disclosure of the information is mandatory only if you elect to initiate a drilling or reentry operation on an oil and gas lease.

The Paperwork Reduction Act of 1995 requires us to inform you that:

The BLM connects this information to an evaluation of the technical, safety, and environmental factors involved with drilling for oil and/or gas on Federal and Indian oil and gas leases. This information will be used to analyze and approve applications. Response to this request is mandatory only if the operator elects to initiate drilling or reentry operations on an oil and gas lease. The BLM would like you to know that you do not have to respond to this or any other Federal agency-sponsored information collection unless it displays a currently valid OMB control number.

BURDEN HOURS STATEMENT: Public reporting burden for this form is estimated to average 8 hours per response, including the time for reviewing instructions, gathering and maintaining data, and completing and reviewing the form. Direct comments regarding the burden estimate or any other aspect of this form to U.S. Department of the Interior, Bureau of Land Management (1004-0137), Bureau Information Connection Clearance Officer (WO-630), 1849 C Street, N.W., Mail Stop 401 LS, Washington, D.C. 20240.

Additional Operator Remarks

Location of Well

1. SHL: NENW / 250 FNL / 1381 FWL / TWSP: 24S / RANGE: 28E / SECTION: 19 / LAT: 32.2097364 / LONG: -104.1310352 (TVD: 0 feet, MD: 0 feet)
PPP: NWNW / 330 FNL / 330 FWL / TWSP: 24S / RANGE: 28E / SECTION: 19 / LAT: 32.2094865 / LONG: -104.1344347 (TVD: 8724 feet, MD: 8813 feet)
BHL: SWSW / 240 FSL / 330 FWL / TWSP: 24S / RANGE: 28E / SECTION: 19 / LAT: 32.1964391 / LONG: -104.1344333 (TVD: 9302 feet, MD: 14166 feet)

BLM Point of Contact

Name: Ciji Methola

Title: GIS Support - Adjudicator

Phone: 5752345924

Email: cmethola@blm.gov

CONFIDENTIAL

Review and Appeal Rights

A person contesting a decision shall request a State Director review. This request must be filed within 20 working days of receipt of the Notice with the appropriate State Director (see 43 CFR 3165.3). The State Director review decision may be appealed to the Interior Board of Land Appeals, 801 North Quincy Street, Suite 300, Arlington, VA 22203 (see 43 CFR 3165.4). Contact the above listed Bureau of Land Management office for further information.

CONFIDENTIAL

PECOS DISTRICT

DRILLING CONDITIONS OF APPROVAL

OPERATOR'S NAME:	Matador Production Company
LEASE NO.:	NMNM018613A
WELL NAME & NO.:	Noel Hensley Fed Com 201H
SURFACE HOLE FOOTAGE:	250'/N & 1318'/W
BOTTOM HOLE FOOTAGE:	240'/S & 330'/W
LOCATION:	Section 19, T.24 S., R.28 E., NMPM
COUNTY:	Eddy County, New Mexico

COA

H2S	<input type="radio"/> Yes	<input checked="" type="radio"/> No	
Potash	<input checked="" type="radio"/> None	<input type="radio"/> Secretary	<input type="radio"/> R-111-P
Cave/Karst Potential	<input type="radio"/> Low	<input checked="" type="radio"/> Medium	<input type="radio"/> High
Variance	<input type="radio"/> None	<input checked="" type="radio"/> Flex Hose	<input type="radio"/> Other
Wellhead	<input type="radio"/> Conventional	<input type="radio"/> Multibowl	<input checked="" type="radio"/> Both
Other	<input type="checkbox"/> 4 String Area	<input type="checkbox"/> Capitan Reef	<input type="checkbox"/> WIPP
Other	<input type="checkbox"/> Fluid Filled	<input type="checkbox"/> Cement Squeeze	<input type="checkbox"/> Pilot Hole
Special Requirements	<input type="checkbox"/> Water Disposal	<input checked="" type="checkbox"/> COM	<input type="checkbox"/> Unit

A. HYDROGEN SULFIDE

Hydrogen Sulfide (H2S) monitors shall be installed prior to drilling out the surface shoe. If H2S is detected in concentrations greater than 100 ppm, the Hydrogen Sulfide area shall meet Onshore Order 6 requirements, which includes equipment and personnel/public protection items. If Hydrogen Sulfide is encountered, provide measured values and formations to the BLM.

B. CASING

Primary Casing Design:

1. The 13-3/8 inch surface casing shall be set at approximately **400 feet** (a minimum of **70 feet (Eddy County)** into the Rustler Anhydrite and above the salt) and cemented to the surface.
 - a. If cement does not circulate to the surface, the appropriate BLM office shall be notified and a temperature survey utilizing an electronic type temperature survey with surface log readout will be used or a cement bond log shall be run to verify the top of the cement. Temperature survey will be run a minimum of six hours after pumping cement and ideally between 8-10 hours after completing the cement job.

- b. Wait on cement (WOC) time for a primary cement job will be a minimum of **8 hours** or 500 pounds compressive strength, whichever is greater. (This is to include the lead cement)
 - c. Wait on cement (WOC) time for a remedial job will be a minimum of 4 hours after bringing cement to surface or 500 pounds compressive strength, whichever is greater.
 - d. If cement falls back, remedial cementing will be done prior to drilling out that string.
2. The 9-5/8 inch intermediate casing shall be set at approximately **2434** feet. The minimum required fill of cement behind the 9-5/8 inch intermediate casing is:

Option 1 (Single Stage):

- Cement to surface. If cement does not circulate see B.1.a, c-d above.
Wait on cement (WOC) time for a primary cement job is to include the lead cement slurry due to cave/karst or potash.

Option 2:

Operator has proposed a DV tool, the depth may be adjusted as long as the cement is changed proportionally. The DV tool may be cancelled if cement circulates to surface on the first stage.

- a. First stage to DV tool: Cement to circulate. If cement does not circulate off the DV tool, contact the appropriate BLM office before proceeding with second stage cement job.
 - b. Second stage above DV tool:
 - Cement to surface. If cement does not circulate, contact the appropriate BLM office.
Wait on cement (WOC) time for a primary cement job is to include the lead cement slurry due to cave/karst or potash.
- ❖ In **Medium Cave/Karst Areas** if cement does not circulate to surface on the first two casing strings, the cement on the 3rd casing string must come to surface.
3. The minimum required fill of cement behind the 7-5/8 inch 2nd intermediate casing is:

Option 1 (Single Stage):

- Cement should tie-back at least **200 feet** into previous casing string. Operator shall provide method of verification.

Option 2:

Operator has proposed a DV tool, the depth may be adjusted as long as the cement is changed proportionally. The DV tool may be cancelled if cement circulates to surface on the first stage.

- a. First stage to DV tool: Cement to circulate. If cement does not circulate off the DV tool, contact the appropriate BLM office before proceeding with second stage cement job.
 - b. Second stage above DV tool:
 - Cement should tie-back at least **200 feet** into previous casing string. Operator shall provide method of verification.
4. The minimum required fill of cement behind the **5 1/2 x 41/2** inch production casing is:
- Cement should tie-back **200 feet** into the previous casing. Operator shall provide method of verification.

C. PRESSURE CONTROL

1. Variance approved to use flex line from BOP to choke manifold. Manufacturer's specification to be readily available. No external damage to flex line. Flex line to be installed as straight as possible (no hard bends).'
- 2.

Option 1:

- a. Minimum working pressure of the blowout preventer (BOP) and related equipment (BOPE) required for drilling below the surface casing shoe shall be **5000 (5M)** psi.

Option 2:

1. Operator has proposed a multi-bowl wellhead assembly. This assembly will only be tested when installed on the surface casing. Minimum working pressure of the blowout preventer (BOP) and related equipment (BOPE) required for drilling below the surface casing shoe shall be **5000 (5M)** psi.
 - a. Wellhead shall be installed by manufacturer's representatives, submit documentation with subsequent sundry.
 - b. If the welding is performed by a third party, the manufacturer's representative shall monitor the temperature to verify that it does not exceed the maximum temperature of the seal.

- c. Manufacturer representative shall install the test plug for the initial BOP test.
- d. If the cement does not circulate and one inch operations would have been possible with a standard wellhead, the well head shall be cut off, cementing operations performed and another wellhead installed.
- e. Whenever any seal subject to test pressure is broken, all the tests in OOGO2.III.A.2.i must be followed.

D. SPECIAL REQUIREMENT (S)

Communitization Agreement

- The operator will submit a Communitization Agreement to the Carlsbad Field Office, 620 E Greene St. Carlsbad, New Mexico 88220, at least 90 days before the anticipated date of first production from a well subject to a spacing order issued by the New Mexico Oil Conservation Division. The Communitization Agreement will include the signatures of all working interest owners in all Federal and Indian leases subject to the Communitization Agreement (i.e., operating rights owners and lessees of record), or certification that the operator has obtained the written signatures of all such owners and will make those signatures available to the BLM immediately upon request.
- If the operator does not comply with this condition of approval, the BLM may take enforcement actions that include, but are not limited to, those specified in 43 CFR 3163.1.
- In addition, the well sign shall include the surface and bottom hole lease numbers. When the Communitization Agreement number is known, it shall also be on the sign.

GENERAL REQUIREMENTS

The BLM is to be notified in advance for a representative to witness:

- a. Spudding well (minimum of 24 hours)
- b. Setting and/or Cementing of all casing strings (minimum of 4 hours)
- c. BOPE tests (minimum of 4 hours)

☒ Eddy County

Call the Carlsbad Field Office, 620 East Greene St., Carlsbad, NM 88220,
(575) 361-2822

☒ Lea County

Call the Hobbs Field Station, 414 West Taylor, Hobbs NM 88240, (575)
393-3612

1. Unless the production casing has been run and cemented or the well has been properly plugged, the drilling rig shall not be removed from over the hole without prior approval.
 - a. In the event the operator has proposed to drill multiple wells utilizing a skid/walking rig. Operator shall secure the wellbore on the current well, after installing and testing the wellhead, by installing a blind flange of like pressure rating to the wellhead and a pressure gauge that can be monitored while drilling is performed on the other well(s).
 - b. When the operator proposes to set surface casing with Spudder Rig
 - Notify the BLM when moving in and removing the Spudder Rig.
 - Notify the BLM when moving in the 2nd Rig. Rig to be moved in within 90 days of notification that Spudder Rig has left the location.
 - BOP/BOPE test to be conducted per Onshore Oil and Gas Order No. 2 as soon as 2nd Rig is rigged up on well.
2. Floor controls are required for 3M or Greater systems. These controls will be on the rig floor, unobstructed, readily accessible to the driller and will be operational at all times during drilling and/or completion activities. Rig floor is defined as the area immediately around the rotary table; the area immediately above the substructure on which the draw works are located, this does not include the dog house or stairway area.
3. The record of the drilling rate along with the GR/N well log run from TD to surface (horizontal well – vertical portion of hole) shall be submitted to the BLM office as well as all other logs run on the borehole 30 days from completion. If available, a digital copy of the logs is to be submitted in addition to the paper copies. The Rustler top and top and bottom of Salt are to be recorded on the Completion Report.

A. CASING

1. Changes to the approved APD casing program need prior approval if the items substituted are of lesser grade or different casing size or are Non-API. The Operator can exchange the components of the proposal with that of superior strength (i.e. changing from J-55 to N-80, or from 36# to 40#). Changes to the approved cement program need prior approval if the altered cement plan has less volume or strength or if the changes are substantial (i.e. Multistage tool, ECP, etc.). The initial wellhead installed on the well will remain on the well with spools used as needed.
2. Wait on cement (WOC) for Potash Areas: After cementing but before commencing any tests, the casing string shall stand cemented under pressure until both of the following conditions have been met: 1) cement reaches a minimum compressive strength of 500 psi for all cement blends, 2) until cement has been in place at least 24 hours. WOC time will be recorded in the driller's log. The casing integrity test can be done (prior to the cement setting up) immediately after bumping the plug.
3. Wait on cement (WOC) for Water Basin: After cementing but before commencing any tests, the casing string shall stand cemented under pressure until both of the following conditions have been met: 1) cement reaches a minimum compressive strength of 500 psi at the shoe, 2) until cement has been in place at least 8 hours. WOC time will be recorded in the driller's log. See individual casing strings for details regarding lead cement slurry requirements. The casing integrity test can be done (prior to the cement setting up) immediately after bumping the plug.
4. Provide compressive strengths including hours to reach required 500 pounds compressive strength prior to cementing each casing string. Have well specific cement details onsite prior to pumping the cement for each casing string.
5. No pea gravel permitted for remedial or fall back remedial without prior authorization from the BLM engineer.
6. On that portion of any well approved for a 5M BOPE system or greater, a pressure integrity test of each casing shoe shall be performed. Formation at the shoe shall be tested to a minimum of the mud weight equivalent anticipated to control the formation pressure to the next casing depth or at total depth of the well. This test shall be performed before drilling more than 20 feet of new hole.
7. If hardband drill pipe is rotated inside casing, returns will be monitored for metal. If metal is found in samples, drill pipe will be pulled and rubber protectors which have a larger diameter than the tool joints of the drill pipe will be installed prior to continuing drilling operations.
8. Whenever a casing string is cemented in the R-111-P potash area, the NMOCD requirements shall be followed.

B. PRESSURE CONTROL

1. All blowout preventer (BOP) and related equipment (BOPE) shall comply with well control requirements as described in Onshore Oil and Gas Order No. 2 and API RP 53 Sec. 17.
2. If a variance is approved for a flexible hose to be installed from the BOP to the choke manifold, the following requirements apply: Check condition of flexible line from BOP to choke manifold, replace if exterior is damaged or if line fails test. Line to be as straight as possible with no hard bends and is to be anchored according to Manufacturer's requirements. The flexible hose can be exchanged with a hose of equal size and equal or greater pressure rating. Anchor requirements, specification sheet and hydrostatic pressure test certification matching the hose in service, to be onsite for review. These documents shall be posted in the company man's trailer and on the rig floor.
3. 5M or higher system requires an HCR valve, remote kill line and annular to match. The remote kill line is to be installed prior to testing the system and tested to stack pressure.
4. If the operator has proposed a multi-bowl wellhead assembly in the APD. The following requirements must be met:
 - a. Wellhead shall be installed by manufacturer's representatives, submit documentation with subsequent sundry.
 - b. If the welding is performed by a third party, the manufacturer's representative shall monitor the temperature to verify that it does not exceed the maximum temperature of the seal.
 - c. Manufacturer representative shall install the test plug for the initial BOP test.
 - d. Whenever any seal subject to test pressure is broken, all the tests in OOGO2.III.A.2.i must be followed.
 - e. If the cement does not circulate and one inch operations would have been possible with a standard wellhead, the well head shall be cut off, cementing operations performed and another wellhead installed.
5. The appropriate BLM office shall be notified a minimum of 4 hours in advance for a representative to witness the tests.
 - a. In a water basin, for all casing strings utilizing slips, these are to be set as soon as the crew and rig are ready and any fallback cement remediation has been done. The casing cut-off and BOP installation can be initiated four hours after installing the slips, which will be approximately six hours after bumping the plug. For those casing strings not using slips, the minimum wait time before cut-off is eight hours after bumping the plug. BOP/BOPE testing can begin after cut-off or once cement reaches 500 psi compressive strength (including

lead when specified), whichever is greater. However, if the float does not hold, cut-off cannot be initiated until cement reaches 500 psi compressive strength (including lead when specified).

- b. In potash areas, for all casing strings utilizing slips, these are to be set as soon as the crew and rig are ready and any fallback cement remediation has been done. For all casing strings, casing cut-off and BOP installation can be initiated at twelve hours after bumping the plug. However, **no tests** shall commence until the cement has had a minimum of 24 hours setup time, except the casing pressure test can be initiated immediately after bumping the plug (only applies to single stage cement jobs).
- c. The tests shall be done by an independent service company utilizing a test plug not a cup or J-packer. The operator also has the option of utilizing an independent tester to test without a plug (i.e. against the casing) pursuant to Onshore Order 2 with the pressure not to exceed 70% of the burst rating for the casing. Any test against the casing must meet the WOC time for water basin (8 hours) or potash (24 hours) or 500 pounds compressive strength, whichever is greater, prior to initiating the test (see casing segment as lead cement may be critical item).
- d. The test shall be run on a 5000 psi chart for a 2-3M BOP/BOP, on a 10000 psi chart for a 5M BOP/BOPE and on a 15000 psi chart for a 10M BOP/BOPE. If a linear chart is used, it shall be a one hour chart. A circular chart shall have a maximum 2 hour clock. If a twelve hour or twenty-four hour chart is used, tester shall make a notation that it is run with a two hour clock.
- e. The results of the test shall be reported to the appropriate BLM office.
- f. All tests are required to be recorded on a calibrated test chart. A copy of the BOP/BOPE test chart and a copy of independent service company test will be submitted to the appropriate BLM office.
- g. The BOP/BOPE test shall include a low pressure test from 250 to 300 psi. The test will be held for a minimum of 10 minutes if test is done with a test plug and 30 minutes without a test plug. This test shall be performed prior to the test at full stack pressure.
- h. BOP/BOPE must be tested by an independent service company within 500 feet of the top of the Wolfcamp formation if the time between the setting of the intermediate casing and reaching this depth exceeds 20 days. This test does not exclude the test prior to drilling out the casing shoe as per Onshore Order No. 2.

C. DRILLING MUD

Mud system monitoring equipment, with derrick floor indicators and visual and audio alarms, shall be operating before drilling into the Wolfcamp formation, and shall be used until production casing is run and cemented.

D. WASTE MATERIAL AND FLUIDS

All waste (i.e. drilling fluids, trash, salts, chemicals, sewage, gray water, etc.) created as a result of drilling operations and completion operations shall be safely contained and disposed of properly at a waste disposal facility. No waste material or fluid shall be disposed of on the well location or surrounding area.

Porto-johns and trash containers will be on-location during fracturing operations or any other crew-intensive operations.

NMK9192019

**PECOS DISTRICT
SURFACE USE
CONDITIONS OF APPROVAL**

OPERATOR'S NAME:	Matador Production Company
WELL NAME & NO.:	Noel Hensley Fed Com 201H
SURFACE HOLE FOOTAGE:	250'/N & 1318'/W
BOTTOM HOLE FOOTAGE:	240'/S & 330'/W
LOCATION:	Section 19, T.24 S., R.28 E., NMPM
COUNTY:	Eddy County, New Mexico

OPERATOR'S NAME:	Matador Production Company
WELL NAME & NO.:	Noel Hensley Fed Com 202H
SURFACE HOLE FOOTAGE:	250'/N & 1491'/W
BOTTOM HOLE FOOTAGE:	240'/S & 2346'/W
LOCATION:	Section 19, T.24 S., R.28 E., NMPM
COUNTY:	Eddy County, New Mexico

OPERATOR'S NAME:	Matador Production Company
WELL NAME & NO.:	Noel Hensley Fed Com 215H
SURFACE HOLE FOOTAGE:	250'/N & 1461'/W
BOTTOM HOLE FOOTAGE:	240'/S & 1310'/W
LOCATION:	Section 19, T.24 S., R.28 E., NMPM
COUNTY:	Eddy County, New Mexico

OPERATOR'S NAME:	Matador Production Company
WELL NAME & NO.:	Noel Hensley Fed Com 221H
SURFACE HOLE FOOTAGE:	280'/N & 1382'/W
BOTTOM HOLE FOOTAGE:	240'/S & 330'/W
LOCATION:	Section 19, T.24 S., R.28 E., NMPM
COUNTY:	Eddy County, New Mexico

OPERATOR'S NAME:	Matador Production Company
WELL NAME & NO.:	Noel Hensley Fed Com 222H
SURFACE HOLE FOOTAGE:	280'/N & 1492'/W
BOTTOM HOLE FOOTAGE:	240'/S & 2346'/W
LOCATION:	Section 19, T.24 S., R.28 E., NMPM
COUNTY:	Eddy County, New Mexico

Approval Date: 12/08/2019

TABLE OF CONTENTS

Standard Conditions of Approval (COA) apply to this APD. If any deviations to these standards exist or special COAs are required, the section with the deviation or requirement will be checked below.

- ☐ **General Provisions**
- ☐ **Permit Expiration**
- ☐ **Archaeology, Paleontology, and Historical Sites**
- ☐ **Noxious Weeds**
- ☐ **Special Requirements**
 - Cave/Karst
 - Range
 - Special Status Plant Species Habitat
- ☐ **Construction**
 - Notification
 - Topsoil
 - Closed Loop System
 - Federal Mineral Material Pits
 - Well Pads
 - Roads
- ☐ **Road Section Diagram**
- ☐ **Production (Post Drilling)**
 - Well Structures & Facilities
 - Surface Pipelines
 - Electric Lines
 - Central Tank Battery
 - Access road
- ☐ **Interim Reclamation**
- ☐ **Final Abandonment & Reclamation**

I. GENERAL PROVISIONS

The approval of the Application For Permit To Drill (APD) is in compliance with all applicable laws and regulations: 43 Code of Federal Regulations 3160, the lease terms, Onshore Oil and Gas Orders, Notices To Lessees, New Mexico Oil Conservation Division (NMOCD) Rules, National Historical Preservation Act As Amended, and instructions and orders of the Authorized Officer. Any request for a variance shall be submitted to the Authorized Officer on Form 3160-5, Sundry Notices and Report on Wells.

II. PERMIT EXPIRATION

If the permit terminates prior to drilling and drilling cannot be commenced within 60 days after expiration, an operator is required to submit Form 3160-5, Sundry Notices and Reports on Wells, requesting surface reclamation requirements for any surface disturbance. However, if the operator will be able to initiate drilling within 60 days after the expiration of the permit, the operator must have set the conductor pipe in order to allow for an extension of 60 days beyond the expiration date of the APD. (Filing of a Sundry Notice is required for this 60 day extension.)

III. ARCHAEOLOGICAL, PALEONTOLOGY & HISTORICAL SITES

Any cultural and/or paleontological resource discovered by the operator or by any person working on the operator's behalf shall immediately report such findings to the Authorized Officer. The operator is fully accountable for the actions of their contractors and subcontractors. The operator shall suspend all operations in the immediate area of such discovery until written authorization to proceed is issued by the Authorized Officer. An evaluation of the discovery shall be made by the Authorized Officer to determine the appropriate actions that shall be required to prevent the loss of significant cultural or scientific values of the discovery. The operator shall be held responsible for the cost of the proper mitigation measures that the Authorized Officer assesses after consultation with the operator on the evaluation and decisions of the discovery. Any unauthorized collection or disturbance of cultural or paleontological resources may result in a shutdown order by the Authorized Officer.

IV. NOXIOUS WEEDS

The operator shall be held responsible if noxious weeds become established within the areas of operations. Weed control shall be required on the disturbed land where noxious weeds exist, which includes the roads, pads, associated pipeline corridor, and adjacent land affected by the establishment of weeds due to this action. The operator shall consult

with the Authorized Officer for acceptable weed control methods, which include following EPA and BLM requirements and policies.

Approval Date: 12/08/2019

V. SPECIAL REQUIREMENT(S)

Hydrology Stipulations:

The entire well pad(s) will be bermed to prevent oil, salt, and other chemical contaminants from leaving the well pad. The compacted berm shall be constructed at a minimum of 12 inches with impermeable mineral material (e.g. caliche). Topsoil shall not be used to construct the berm. No water flow from the uphill side(s) of the pad shall be allowed to enter the well pad. The integrity of the berm shall be maintained around the surfaced pad throughout the life of the well and around the downsized pad after interim reclamation has been completed. Any water erosion that may occur due to the construction of the well pad during the life of the well will be quickly corrected and proper measures will be taken to prevent future erosion. Stockpiling of topsoil is required. The top soil shall be stockpiled in an appropriate location to prevent loss of soil due to water or wind erosion and not used for berming or erosion control. If fluid collects within the bermed area, the fluid must be vacuumed into a safe container and disposed of properly at a state approved facility.

TANK BATTERY:

Tank battery locations will be lined and bermed. A 20 mil permanent liner will be installed with a 4 oz. felt backing to prevent tears or punctures. Tank battery berms must be large enough to contain 1 ½ times the content of the largest tank or 24-hour production, whichever is greater. Automatic shut off, check valves, or similar systems will be installed for tanks to minimize the effects of catastrophic line failures used in production or drilling.

BURIED/SURFACE LINE(S):

When crossing ephemeral drainages, the pipeline(s) will be buried to a minimum depth of 48 inches from the top of pipe to ground level. Erosion control methods such as gabions and/or rock aprons should be placed on both up and downstream sides of the pipeline crossing. In addition, curled (weed free) wood/straw fiber wattles/logs and/or silt fences should be placed on the downstream side for sediment control during construction and maintained until soils and vegetation have stabilized. Water bars should be placed within the ROW to divert and dissipate surface runoff. A pipeline access road is not permitted to cross these ephemeral drainages. Traffic should be diverted to a preexisting route. Additional seeding may be required in floodplains and drainages to restore energy dissipating vegetation.

Prior to pipeline installation/construction a leak detection plan will be developed. The method(s) could incorporate gauges to detect pressure drops, situating valves and lines so they can be visually inspected periodically or installing electronic sensors to alarm when a leak is present. The leak detection plan will incorporate an automatic shut off system that will be installed for proposed pipelines to minimize the effects of an undesirable event.

ELECTRIC LINE(S):

Any water erosion that may occur due to the construction of overhead electric line and during the life of the power line will be quickly corrected and proper measures will be taken to prevent future erosion. A power pole should not be placed in drainages, playas, wetlands, riparian areas, or floodplains and must span across the features at a distance away that would not promote further erosion.

TEMPORARY USE FRESH WATER FRAC LINE(S):

Once the temporary use exceeds the timeline of 180 days and/or with a 90-day extension status; further analysis will be required if the applicant pursues to turn the temporary ROW into a permanent ROW.

Karst Resources:**Construction Mitigation**

In order to mitigate the impacts from construction activities on cave and karst resources, the following Conditions of Approval will apply to this APD or project:

General Construction:

- No blasting
- The BLM, Carlsbad Field Office, will be informed immediately if any subsurface drainage channels, cave passages, or voids are penetrated during construction, and no additional construction shall occur until clearance has been issued by the Authorized Officer.
- All linear surface disturbance activities will avoid sinkholes and other karst features to lessen the possibility of encountering near surface voids during construction, minimize changes to runoff, and prevent untimely leaks and spills from entering the karst drainage system.
- All spills or leaks will be reported to the BLM immediately for their immediate and proper treatment.

Pad Construction:

- The pad will be constructed and leveled by adding the necessary fill and caliche – no blasting.
- The entire perimeter of the well pad will be bermed to prevent oil, salt, and other chemical contaminants from leaving the well pad.

- The compacted berm shall be constructed at a minimum of 12 inches high with impermeable mineral material (e.g., caliche).
- No water flow from the uphill side(s) of the pad shall be allowed to enter the well pad.
- The topsoil stockpile shall be located outside the bermed well pad.
- Topsoil, either from the well pad or surrounding area, shall not be used to construct the berm.
- No storm drains, tubing or openings shall be placed in the berm.
- If fluid collects within the bermed area, the fluid must be vacuumed into a safe container and disposed of properly at a state approved facility.
- The integrity of the berm shall be maintained around the surfaced pad throughout the life of the well and around the downsized pad after interim reclamation has been completed.
- Any access road entering the well pad shall be constructed so that the integrity of the berm height surrounding the well pad is not compromised (i.e. an access road crossing the berm cannot be lower than the berm height).
- Following a rain event, all fluids will vacuumed off of the pad and hauled off-site and disposed at a proper disposal facility.

Road Construction:

- Turnout ditches and drainage leadoffs will not be constructed in such a manner as to alter the natural flow of water into or out of cave or karst features.
- Special restoration stipulations or realignment may be required if subsurface features are discovered during construction.

Buried Pipeline/Cable Construction:

- Rerouting of the buried line(s) may be required if a subsurface void is encountered during construction to minimize the potential subsidence/collapse of the feature(s) as well as the possibility of leaks/spills entering the karst drainage system.

Powerline Construction:

- Smaller powerlines will be routed around sinkholes and other karst features to avoid or lessen the possibility of encountering near surface voids and to minimize changes to runoff or possible leaks and spills from entering karst systems.
- Larger powerlines will adjust their pole spacing to avoid cave and karst features.
- Special restoration stipulations or realignment may be required if subsurface voids are encountered.

Surface Flowlines Installation:

- Flowlines will be routed around sinkholes and other karst features to minimize the possibility of leaks/spills from entering the karst drainage system.

Drilling Mitigation

Federal regulations and standard Conditions of Approval applied to all APDs require that adequate measures are taken to prevent contamination to the environment. Due to the extreme sensitivity of the cave and karst resources in this project area, the following additional Conditions of Approval will be added to this APD.

To prevent cave and karst resource contamination the following will be required:

- Closed loop system using steel tanks - all fluids and cuttings will be hauled off-site and disposed of properly at an authorized site
- Rotary drilling with fresh water where cave or karst features are expected to prevent contamination of freshwater aquifers.
- Directional drilling is only allowed at depths greater than 100 feet below the cave occurrence zone to prevent additional impacts resulting from directional drilling.
- Lost circulation zones will be logged and reported in the drilling report so BLM can assess the situation and work with the operator on corrective actions.
- Additional drilling, casing, and cementing procedures to protect cave zones and fresh water aquifers. See drilling COAs.

Production Mitigation

In order to mitigate the impacts from production activities and due to the nature of karst terrane, the following Conditions of Approval will apply to this APD:

- Tank battery locations and facilities will be bermed and lined with a 20 mil thick permanent liner that has a 4 oz. felt backing, or equivalent, to prevent tears or punctures. Tank battery berms must be large enough to contain 1 ½ times the content of the largest tank.
- Development and implementation of a leak detection system to provide an early alert to operators when a leak has occurred.
- Automatic shut off, check valves, or similar systems will be installed for pipelines and tanks to minimize the effects of catastrophic line failures used in production or drilling.

Residual and Cumulative Mitigation

The operator will perform annual pressure monitoring on all casing annuli and reported in a sundry notice. If the test results indicated a casing failure has occurred, remedial action will be taken to correct the problem to the BLM's approval.

Plugging and Abandonment Mitigation

Upon well abandonment in high cave karst areas additional plugging conditions of approval may be required. The BLM will assess the situation and work with the operator to ensure proper plugging of the wellbore.

Range Stipulations:**Cattleguards**

Where a permanent cattlegaurd is approved, an appropriately sized cattleguard(s) sufficient to carry out the project shall be installed and maintained at fence crossing(s). Any existing cattleguard(s) on the access road shall be repaired or replaced if they are damaged or have deteriorated beyond practical use. The operator shall be responsible for the condition of the existing cattleguard(s) that are in place and are utilized during lease operations. A gate shall be constructed on one side of the cattleguard and fastened securely to H-braces.

Fence Requirement

Where entry granted across a fence line, the fence must be braced and tied off on both sides of the passageway prior to cutting. Once the work is completed, the fence will be restored to its prior condition, or better. The operator shall notify the private surface landowner or the grazing allotment holder prior to crossing any fence(s).

Livestock Watering Requirement

Structures that provide water to livestock, such as windmills, pipelines, drinking troughs, and earthen reservoirs, will be avoided by moving the proposed action.

Special Status Plant Species (SSPS) Habitat Stipulations:

- Vehicles and equipment will be kept on existing roads and approved surfaces only, and will avoid travel across undisturbed surfaces; workers will be instructed not to park off the roads or ROW in undisturbed areas.
- Alterations to project design and additions of project components will require SSPS surveys and re-analysis of impacts if those project elements intersect SSPS suitable habitat.

VI. CONSTRUCTION

A. NOTIFICATION

The BLM shall administer compliance and monitor construction of the access road and well pad. Notify the at least 3 working days prior to commencing construction of the access road and/or well pad.

When construction operations are being conducted on this well, the operator shall have the approved APD and Conditions of Approval (COA) on the well site and they shall be made available upon request by the Authorized Officer.

B. TOPSOIL

The operator shall strip the top portion of the soil (root zone) from the entire well pad area and stockpile the topsoil along the edge of the well pad as depicted in the APD. The root zone is typically six (6) inches in depth. All the stockpiled topsoil will be redistributed over the interim reclamation areas. Topsoil shall not be used for berming the pad or facilities. For final reclamation, the topsoil shall be spread over the entire pad area for seeding preparation.

Other subsoil (below six inches) stockpiles must be completely segregated from the topsoil stockpile. Large rocks or subsoil clods (not evident in the surrounding terrain) must be buried within the approved area for interim and final reclamation.

C. CLOSED LOOP SYSTEM

Tanks are required for drilling operations: No Pits.

The operator shall properly dispose of drilling contents at an authorized disposal site.

D. FEDERAL MINERAL MATERIALS PIT

Payment shall be made to the BLM prior to removal of any federal mineral materials. Call the .

E. WELL PAD SURFACING

Surfacing of the well pad is not required.

If the operator elects to surface the well pad, the surfacing material may be required to be removed at the time of reclamation. The well pad shall be constructed in a manner which

creates the smallest possible surface disturbance, consistent with safety and operational needs.

F. EXCLOSURE FENCING (CELLARS & PITS)

Exclosure Fencing

The operator will install and maintain exclosure fencing for all open well cellars to prevent access to public, livestock, and large forms of wildlife before and after drilling operations until the pit is free of fluids and the operator initiates backfilling. (For examples of exclosure fencing design, refer to BLM's Oil and Gas Gold Book, Exclosure Fence Illustrations, Figure 1, Page 18.)

G. ON LEASE ACCESS ROADS

Road Width

The access road shall have a driving surface that creates the smallest possible surface disturbance and does not exceed fourteen (14) feet in width. The maximum width of surface disturbance, when constructing the access road, shall not exceed twenty-five (25) feet.

Surfacing

Surfacing material is not required on the new access road driving surface. If the operator elects to surface the new access road or pad, the surfacing material may be required to be removed at the time of reclamation.

Where possible, no improvements should be made on the unsurfaced access road other than to remove vegetation as necessary, road irregularities, safety issues, or to fill low areas that may sustain standing water.

The Authorized Officer reserves the right to require surfacing of any portion of the access road at any time deemed necessary. Surfacing may be required in the event the road deteriorates, erodes, road traffic increases, or it is determined to be beneficial for future field development. The surfacing depth and type of material will be determined at the time of notification.

Crowning

Crowning shall be done on the access road driving surface. The road crown shall have a grade of approximately 2% (i.e., a 1" crown on a 14' wide road). The road shall conform to Figure 1; cross section and plans for typical road construction.

Ditching

Ditching shall be required on both sides of the road.

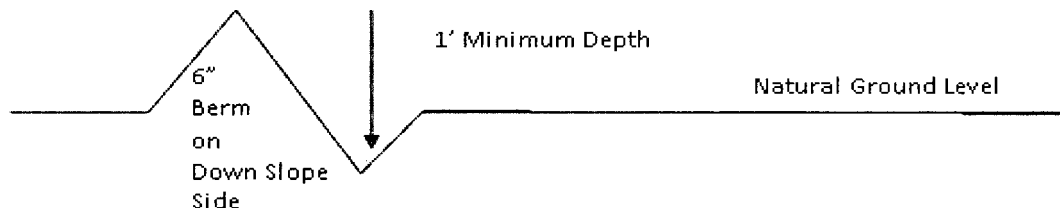
Turnouts

Vehicle turnouts shall be constructed on the road. Turnouts shall be intervisible with interval spacing distance less than 1000 feet. Turnouts shall conform to Figure 1; cross section and plans for typical road construction.

Drainage

Drainage control systems shall be constructed on the entire length of road (e.g. ditches, sidehill outsloping and insloping, leadoff ditches, culvert installation, and low water crossings).

A typical lead-off ditch has a minimum depth of 1 foot below and a berm of 6 inches above natural ground level. The berm shall be on the down-slope side of the lead-off ditch.



All lead-off ditches shall be graded to drain water with a 1 percent minimum to 3 percent maximum ditch slope. The spacing interval are variable for lead-off ditches and shall be determined according to the formula for spacing intervals of lead-off ditches, but may be amended depending upon existing soil types and centerline road slope (in %);

Cattle guards

An appropriately sized cattle guard sufficient to carry out the project shall be installed and maintained at fence/road crossings. Any existing cattle guards on the access road route shall be repaired or replaced if they are damaged or have deteriorated beyond practical use. The operator shall be responsible for the condition of the existing cattle guards that are in place and are utilized during lease operations.

Fence Requirement

Where entry is granted across a fence line, the fence shall be braced and tied off on both sides of the passageway prior to cutting. The operator shall notify the private surface landowner or the grazing allotment holder prior to crossing any fences.

Public Access

Public access on this road shall not be restricted by the operator without specific written approval granted by the Authorized Officer.

Approval Date: 12/08/2019

Construction Steps

1. Salvage topsoil
2. Construct road

3. Redistribute topsoil
4. Revegetate slopes

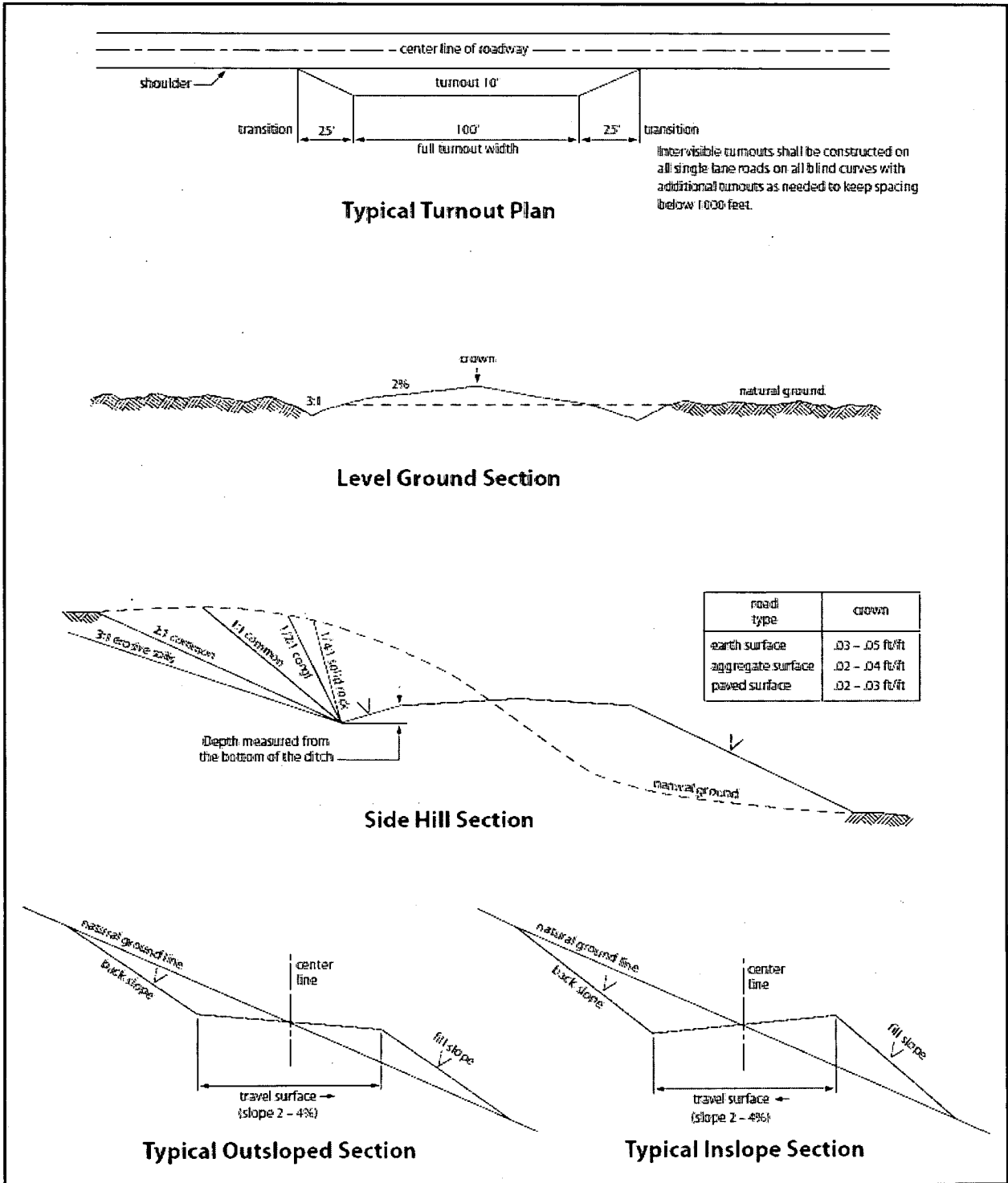


Figure 1. Cross-sections and plans for typical road sections representative of BLM resource or FS local and higher-class roads.

VII. PRODUCTION (POST DRILLING)

A. WELL STRUCTURES & FACILITIES

Placement of Production Facilities

Production facilities should be placed on the well pad to allow for maximum interim recontouring and revegetation of the well location.

Exclosure Netting (Open-top Tanks)

Immediately following active drilling or completion operations, the operator will take actions necessary to prevent wildlife and livestock access, including avian wildlife, to all open-topped tanks that contain or have the potential to contain salinity sufficient to cause harm to wildlife or livestock, hydrocarbons, or Resource Conservation and Recovery Act of 1976-exempt hazardous substances. At a minimum, the operator will net, screen, or cover open-topped tanks to exclude wildlife and livestock and prevent mortality. If the operator uses netting, the operator will cover and secure the open portion of the tank to prevent wildlife entry. The operator will net, screen, or cover the tanks until the operator removes the tanks from the location or the tanks no longer contain substances that could be harmful to wildlife or livestock. Use a maximum netting mesh size of 1 ½ inches. The netting must not be in contact with fluids and must not have holes or gaps.

Chemical and Fuel Secondary Containment and Exclosure Screening

The operator will prevent all hazardous, poisonous, flammable, and toxic substances from coming into contact with soil and water. At a minimum, the operator will install and maintain an impervious secondary containment system for any tank or barrel containing hazardous, poisonous, flammable, or toxic substances sufficient to contain the contents of the tank or barrel and any drips, leaks, and anticipated precipitation. The operator will dispose of fluids within the containment system that do not meet applicable state or U. S. Environmental Protection Agency livestock water standards in accordance with state law; the operator must not drain the fluids to the soil or ground. The operator will design, construct, and maintain all secondary containment systems to prevent wildlife and livestock exposure to harmful substances. At a minimum, the operator will install effective wildlife and livestock exclosure systems such as fencing, netting, expanded metal mesh, lids, and grate covers. Use a maximum netting mesh size of 1 ½ inches.

Open-Vent Exhaust Stack Exclosures

The operator will construct, modify, equip, and maintain all open-vent exhaust stacks on production equipment to prevent birds and bats from entering, and to discourage perching, roosting, and nesting. (*Recommended exclosure structures on open-vent exhaust stacks are in the shape of a cone.*) Production equipment includes, but may not be limited to, tanks, heater-treaters, separators, dehydrators, flare stacks, in-line units, and compressor mufflers.

Containment Structures

Proposed production facilities such as storage tanks and other vessels will have a secondary containment structure that is constructed to hold the capacity of 1.5 times the largest tank, plus freeboard to account for precipitation, unless more stringent protective requirements are deemed necessary.

Painting Requirement

All above-ground structures including meter housing that are not subject to safety requirements shall be painted a flat non-reflective paint color, **Shale Green** from the BLM Standard Environmental Color Chart (CC-001: June 2008).

B. PIPELINES

STANDARD STIPULATIONS FOR SURFACE INSTALLED PIPELINES

A copy of the application (Grant, Sundry Notice, APD) and attachments, including stipulations, survey plat and/or map, will be on location during construction. BLM personnel may request to you a copy of your permit during construction to ensure compliance with all stipulations.

Holder agrees to comply with the following stipulations to the satisfaction of the Authorized Officer:

1. The holder shall indemnify the United States against any liability for damage to life or property arising from the occupancy or use of public lands under this grant.
2. The holder shall comply with all applicable Federal laws and regulations existing or hereafter enacted or promulgated. In any event, the holder shall comply with the Toxic Substances Control Act of 1976 as amended, 15 USC 2601 et seq. (1982) with regards to any toxic substances that are used, generated by or stored on the right-of-way or on facilities authorized under this right-of-way grant. (See 40 CFR, Part 702-799 and especially, provisions on polychlorinated biphenyls, 40 CFR 761.1-761.193.) Additionally, any release of toxic substances (leaks, spills, etc.) in excess of the reportable quantity established by 40 CFR, Part 117 shall be reported as required by the Comprehensive Environmental Response, Compensation, and Liability Act, section 102b. A copy of any report required or requested by any Federal agency or State government as a result of a reportable release or spill of any toxic substances shall be furnished to the authorized officer concurrent with the filing of the reports to the involved Federal agency or State government.
3. The holder agrees to indemnify the United States against any liability arising from the release of any hazardous substance or hazardous waste (as these terms are defined in the Comprehensive Environmental Response, Compensation and Liability Act of 1980, 42 U.S.C. 9601, et seq. or the Resource Conservation and Recovery Act, 42 U.S.C. 6901, et seq.) on the Right-of-Way (unless the release or threatened release is wholly unrelated to

activity of the Right-of-Way holder's activity on the Right-of-Way), or resulting from the activity of the Right-of-Way holder on the Right-of-Way. This agreement applies without regard to whether a release is caused by the holder, its agent, or unrelated third parties.

4. The holder shall be liable for damage or injury to the United States to the extent provided by 43 CFR Sec. 2883.1-4. The holder shall be held to a standard of strict liability for damage or injury to the United States resulting from pipe rupture, fire, or spills caused or substantially aggravated by any of the following within the right-of-way or permit area:

- a. Activities of the holder including, but not limited to construction, operation, maintenance, and termination of the facility.
- b. Activities of other parties including, but not limited to:
 - (1) Land clearing.
 - (2) Earth-disturbing and earth-moving work.
 - (3) Blasting.
 - (4) Vandalism and sabotage.
- c. Acts of God.

The maximum limitation for such strict liability damages shall not exceed one million dollars (\$1,000,000) for any one event, and any liability in excess of such amount shall be determined by the ordinary rules of negligence of the jurisdiction in which the damage or injury occurred.

This section shall not impose strict liability for damage or injury resulting primarily from an act of war or from the negligent acts or omissions of the United States.

5. If, during any phase of the construction, operation, maintenance, or termination of the pipeline, any oil, salt water, or other pollutant should be discharged from the pipeline system, impacting Federal lands, the control and total removal, disposal, and cleaning up of such oil, salt water, or other pollutant, wherever found, shall be the responsibility of the holder, regardless of fault. Upon failure of the holder to control, dispose of, or clean up such discharge on or affecting Federal lands, or to repair all damages resulting therefrom, on the Federal lands, the Authorized Officer may take such measures as he deems necessary to control and clean up the discharge and restore the area, including, where appropriate, the aquatic environment and fish and wildlife habitats, at the full expense of the holder. Such action by the Authorized Officer shall not relieve the holder of any responsibility as provided herein.

6. All construction and maintenance activity will be confined to the authorized right-of-way width of 20 feet. If the pipeline route follows an existing road or buried pipeline right-of-way, the surface pipeline must be installed no farther than 10 feet from the edge of the road or buried pipeline right-of-way. If existing surface pipelines

prevent this distance, the proposed surface pipeline must be installed immediately adjacent to the outer surface pipeline. All construction and maintenance activity will be confined to existing roads or right-of-ways.

7. No blading or clearing of any vegetation will be allowed unless approved in writing by the Authorized Officer.

8. The holder shall install the pipeline on the surface in such a manner that will minimize suspension of the pipeline across low areas in the terrain. In hummocky or dune areas, the pipeline will be "snaked" around hummocks and dunes rather than suspended across these features.

9. The pipeline shall be buried with a minimum of 24 inches under all roads, "two-tracks," and trails. Burial of the pipe will continue for 20 feet on each side of each crossing. The condition of the road, upon completion of construction, shall be returned to at least its former state with no bumps or dips remaining in the road surface.

10. The holder shall minimize disturbance to existing fences and other improvements on public lands. The holder is required to promptly repair improvements to at least their former state. Functional use of these improvements will be maintained at all times. The holder will contact the owner of any improvements prior to disturbing them. When necessary to pass through a fence line, the fence shall be braced on both sides of the passageway prior to cutting of the fence. No permanent gates will be allowed unless approved by the Authorized Officer.

11. In those areas where erosion control structures are required to stabilize soil conditions, the holder will install such structures as are suitable for the specific soil conditions being encountered and which are in accordance with sound resource management practices.

12. Excluding the pipe, all above-ground structures not subject to safety requirement shall be painted by the holder to blend with the natural color of the landscape. The paint used shall be a color which simulates "Standard Environmental Colors" – **Shale Green**, Munsell Soil Color No. 5Y 4/2; designated by the Rocky Mountain Five State Interagency Committee.

13. The pipeline will be identified by signs at the point of origin and completion of the right-of-way and at all road crossings. At a minimum, signs will state the holder's name, BLM serial number, and the product being transported. Signs will be maintained in a legible condition for the life of the pipeline.

14. The holder shall not use the pipeline route as a road for purposes other than routine maintenance as determined necessary by the Authorized Officer in consultation with the holder. The holder will take whatever steps are necessary to ensure that the pipeline

route is not used as a roadway.

15. Any cultural and/or paleontological resource (historic or prehistoric site or object) discovered by the holder, or any person working on his behalf, on public or Federal land shall be immediately reported to the authorized officer. Holder shall suspend all operations in the immediate area of such discovery until written authorization to proceed is issued by the authorized officer. An evaluation of the discovery will be made by the authorized officer to determine appropriate cultural or scientific values. The holder will be responsible for the cost of evaluation and any decision as to proper mitigation measures will be made by the authorized officer after consulting with the holder.

16. The operator shall be held responsible if noxious weeds become established within the areas of operations. Weed control shall be required on the disturbed land where noxious weeds exist, which includes the roads, powerline corridor, and adjacent land affected by the establishment of weeds due to this action. The operator shall consult with the Authorized Officer for acceptable weed control methods, which include following EPA and BLM requirements and policies.

17. Surface pipelines must be less than or equal to 4 inches and a working pressure below 125 psi.

18. Special Stipulations:

Special Status Plant Species (SSPS) Habitat Stipulations:

- Vehicles and equipment will be kept on existing roads and approved surfaces only, and will avoid travel across undisturbed surfaces; workers will be instructed not to park off the roads or ROW in undisturbed areas.
- Alterations to project design and additions of project components will require SSPS surveys and re-analysis of impacts if those project elements intersect SSPS suitable habitat.

Hydrology:

BURIED/SURFACE LINE(S):

When crossing ephemeral drainages, the pipeline(s) will be buried to a minimum depth of 48 inches from the top of pipe to ground level. Erosion control methods such as gabions and/or rock aprons should be placed on both up and downstream sides of the pipeline crossing. In addition, curled (weed free) wood/straw fiber wattles/logs and/or silt fences should be placed on the downstream side for sediment control during construction and maintained until soils and vegetation have stabilized. Water bars should be placed within the ROW to divert and dissipate surface runoff. A pipeline access road is not permitted to cross these ephemeral drainages. Traffic should be diverted to a preexisting route.

Additional seeding may be required in floodplains and drainages to restore energy dissipating vegetation.

Prior to pipeline installation/construction a leak detection plan will be developed. The method(s) could incorporate gauges to detect pressure drops, situating valves and lines so they can be visually inspected periodically or installing electronic sensors to alarm when a leak is present. The leak detection plan will incorporate an automatic shut off system that will be installed for proposed pipelines to minimize the effects of an undesirable event.

TEMPORARY USE FRESH WATER FRAC LINE(S):

Once the temporary use exceeds the timeline of 180 days and/or with a 90-day extension status; further analysis will be required if the applicant pursues to turn the temporary ROW into a permanent ROW.

Karst Stipulations

Surface Flowlines Installation:

- Flowlines will be routed around sinkholes and other karst features to minimize the possibility of leaks/spills from entering the karst drainage system.

C. ELECTRIC LINES

STANDARD STIPULATIONS FOR OVERHEAD ELECTRIC DISTRIBUTION LINES

A copy of the grant and attachments, including stipulations, survey plat and/or map, will be on location during construction. BLM personnel may request to you a copy of your permit during construction to ensure compliance with all stipulations.

Holder agrees to comply with the following stipulations to the satisfaction of the Authorized Officer:

1. The holder shall indemnify the United States against any liability for damage to life or property arising from the occupancy or use of public lands under this grant.
2. The holder shall comply with all applicable Federal laws and regulations existing or hereafter enacted or promulgated. In any event, the holder shall comply with the Toxic Substances Control Act of 1976 as amended, 15 USC 2601 et seq. (1982) with regards to any toxic substances that are used, generated by or stored on the right-of-way or on facilities authorized under this right-of-way grant. (See 40 CFR, Part 702-799 and especially, provisions on polychlorinated biphenyls, 40 CFR 761.1-761.193.) Additionally, any release of toxic substances (leaks, spills, etc.) in excess of the reportable quantity established by 40 CFR, Part 117 shall be reported as required by the

Comprehensive Environmental Response, Compensation, and Liability Act, section 102b. A copy of any report required or requested by any Federal agency or State government as a result of a reportable release or spill of any toxic substances shall be furnished to the authorized officer concurrent with the filing of the reports to the involved Federal agency or State government.

3. The holder agrees to indemnify the United States against any liability arising from the release of any hazardous substance or hazardous waste (as these terms are defined in the Comprehensive Environmental Response, Compensation and Liability Act of 1980, 42 U.S.C. 9601, et seq. or the Resource Conservation and Recovery Act, 42 U.S.C. 6901, et seq.) on the Right-of-Way (unless the release or threatened release is wholly unrelated to the Right-of-Way holder's activity on the Right-of-Way), or resulting from the activity of the Right-of-Way holder on the Right-of-Way. This agreement applies without regard to whether a release is caused by the holder, its agent, or unrelated third parties.

4. There will be no clearing or blading of the right-of-way unless otherwise agreed to in writing by the Authorized Officer.

5. Power lines shall be constructed and designed in accordance to standards outlined in "Suggested Practices for Avian Protection on Power lines: The State of the Art in 2006" Edison Electric Institute, APLIC, and the California Energy Commission 2006 . The holder shall assume the burden and expense of proving that pole designs not shown in the above publication deter raptor perching, roosting, and nesting. Such proof shall be provided by a raptor expert approved by the Authorized Officer. The BLM reserves the right to require modification or additions to all powerline structures placed on this right-of-way, should they be necessary to ensure the safety of large perching birds. Such modifications and/or additions shall be made by the holder without liability or expense to the United States.

Raptor deterrence will consist of but not limited to the following: triangle perch discouragers shall be placed on each side of the cross arms and a nonconductive perching deterrence shall be placed on all vertical poles that extend past the cross arms.

6. The holder shall minimize disturbance to existing fences and other improvements on public lands. The holder is required to promptly repair improvements to at least their former state. Functional use of these improvements will be maintained at all times. The holder will contact the owner of any improvements prior to disturbing them. When necessary to pass through a fence line, the fence shall be braced on both sides of the passageway prior to cutting the fence. No permanent gates will be allowed unless approved by the Authorized Officer.

7. The BLM serial number assigned to this authorization shall be posted in a permanent, conspicuous manner where the power line crosses roads and at all serviced facilities. Numbers will be at least two inches high and will be affixed to the pole nearest the road

crossing and at the facilities served.

8. Upon cancellation, relinquishment, or expiration of this grant, the holder shall comply with those abandonment procedures as prescribed by the Authorized Officer.

9. All surface structures (poles, lines, transformers, etc.) shall be removed within 180 days of abandonment, relinquishment, or termination of use of the serviced facility or facilities or within 180 days of abandonment, relinquishment, cancellation, or expiration of this grant, whichever comes first. This will not apply where the power line extends service to an active, adjoining facility or facilities.

10. Any cultural and/or paleontological resource (historic or prehistoric site or object) discovered by the holder, or any person working on his behalf, on public or Federal land shall be immediately reported to the Authorized Officer. Holder shall suspend all operations in the immediate area of such discovery until written authorization to proceed is issued by the Authorized Officer. An evaluation of the discovery will be made by the Authorized Officer to determine appropriate actions to prevent the loss of significant cultural or scientific values. The holder will be responsible for the cost of evaluation and any decision as to proper mitigation measures will be made by the Authorized Officer after consulting with the holder.

11. Special Stipulations:

- For reclamation remove poles, lines, transformer, etc. and dispose of properly.
- Fill in any holes from the poles removed.

Special Status Plant Species (SSPS) Habitat Stipulations:

- Vehicles and equipment will be kept on existing roads and approved surfaces only, and will avoid travel across undisturbed surfaces; workers will be instructed not to park off the roads or ROW in undisturbed areas.
- Alterations to project design and additions of project components will require SSPS surveys and re-analysis of impacts if those project elements intersect SSPS suitable habitat.
-

Hydrology:

ELECTRIC LINE(S):

Any water erosion that may occur due to the construction of overhead electric line and during the life of the power line will be quickly corrected and proper measures will be taken to prevent future erosion. A power pole should not be placed in drainages, playas, wetlands, riparian areas, or floodplains and must span across the features at a distance away that would not promote further erosion.

Karst:

Powerline Construction:

- Smaller powerlines will be routed around sinkholes and other karst features to avoid or lessen the possibility of encountering near surface voids and to minimize changes to runoff or possible leaks and spills from entering karst systems.
- Larger powerlines will adjust their pole spacing to avoid cave and karst features.

Special restoration stipulations or realignment may be required if subsurface voids are

D. OIL AND GAS RELATED SITES**STANDARD STIPULATIONS FOR OIL AND GAS RELATED SITES**

A copy of the application (Grant/Sundry Notice) and attachments, including stipulations and map, will be on location during construction. BLM personnel may request to view a copy of your permit during construction to ensure compliance with all stipulations.

The holder agrees to comply with the following stipulations to the satisfaction of the Authorized Officer, BLM.

1. The holder shall indemnify the United States against any liability for damage to life or property arising from the occupancy or use of public lands under this grant and for all response costs, penalties, damages, claims, and other costs arising from the provisions of the Resource Conservation and Recovery Act (RCRA), 42 U.S.C. Chap. 82, Section 6901 et. seq., from the Comprehensive Environmental Response, Compensation and Liability Act (CERCLA), 42 U.S.C. Chap. 109, Section 9601 et. seq., and from other applicable environmental statutes.
2. The holder shall comply with all applicable Federal laws and regulations existing or hereafter enacted or promulgated. In any event, the holder shall comply with the Toxic Substances Control Act of 1976, as amended (15 U.S.C. 2601, et. seq.) with regard to any toxic substances that are used, generated by or stored on the right-of-way or on facilities authorized by this grant. (See 40 CFR, Part 702-799 and especially, provisions on polychlorinated biphenyls, 40 CFR 761.1-761.193.) Additionally, any release of toxic substances (leaks, spills, etc.) in excess of the reportable quantity established by 40 CFR, Part 117 shall be reported as required by the Comprehensive Environmental Response, Compensation and Liability Act, Section 102b. A copy of any report required or requested by any Federal agency or State government as a result of a reportable release or spill of any toxic substances shall be furnished to the Authorized Officer concurrent with the filing of the reports to the involved Federal agency or State government.
3. The holder agrees to indemnify the United States against any liability arising from the release of any hazardous substance or hazardous waste (as these terms are defined in the Comprehensive Environmental Response, Compensation and Liability Act of 1980, 42

U.S.C. 9601, et. seq. or the Resource Conservation and Recovery Act, 42 U.S.C. 6901, et. seq.) on the right-of-way (unless the release or threatened release is wholly unrelated to the right-of-way holder's activity on the right-of-way). This agreement applies without regard to whether a release is caused by the holder, its agent, or unrelated third parties.

4. If, during any phase of the construction, operation, maintenance, or termination of the site or related pipeline(s), any oil or other pollutant should be discharged from site facilities, the pipeline(s) or from containers or vehicles impacting Federal lands, the control and total removal, disposal, and cleanup of such oil or other pollutant, wherever found, shall be the responsibility of the holder, regardless of fault. Upon failure of the holder to control, dispose of, or clean up such discharge on or affecting Federal lands, or to repair all damages to Federal lands resulting therefrom, the Authorized Officer may take such measures as deemed necessary to control and cleanup the discharge and restore the area, including, where appropriate, the aquatic environment and fish and wildlife habitats, at the full expense of the holder. Such action by the Authorized Officer shall not relieve the holder of any liability or responsibility.

5. Sites shall be maintained in an orderly, sanitary condition at all times. Waste materials, both liquid and solid, shall be disposed of promptly at an appropriate, authorized waste disposal facility in accordance with all applicable State and Federal laws. "Waste" means all discarded matter including, but not limited to, human waste, trash, garbage, refuse, petroleum products, brines, chemicals, oil drums, ashes, and equipment.

6. The operator will notify the Bureau of Land Management (BLM) authorized officer and nearest Fish and Wildlife Service (FWS) Law Enforcement office within 24 hours, if the operator discovers a dead or injured federally protected species (i.e., migratory bird species, bald or golden eagle, or species listed by the FWS as threatened or endangered) in or adjacent to a pit, trench, tank, exhaust stack, or fence. (If the operator is unable to contact the FWS Law Enforcement office, the operator must contact the nearest FWS Ecological Services office.)

7. All above-ground structures not subject to safety requirements shall be painted by the holder to blend with the natural color of the landscape. The paint used shall be a color which simulates "Standard Environmental Colors" designated by the Rocky Mountain Five-State Interagency Committee. The color selected for this project is **Shale Green**, Munsell Soil Color Chart Number 5Y 4/2.

8. Any cultural and/or paleontological resource (historic or prehistoric site or object) discovered by the holder, or any person working on the holder's behalf, on public or Federal land shall be immediately reported to the Authorized Officer. The holder shall suspend all operations in the immediate area of such discovery until written authorization to proceed is issued by the Authorized Officer. An evaluation of the discovery will be

made by the Authorized Officer to determine appropriate actions to prevent the loss of significant cultural or scientific values. The holder will be responsible for the cost of evaluation and any decision as to the proper mitigation measures will be made by the Authorized Officer after consulting with the holder.

9. A sales contract for removal of mineral material (caliche, sand, gravel, fill dirt) from an authorized pit, site, or on location must be obtained from the BLM prior to commencing construction. There are several options available for purchasing mineral material: contact the BLM office (575-234-5972).

10. The operator shall be held responsible if noxious weeds become established within the areas of operations. Weed control shall be required on the disturbed land where noxious weeds exist, which includes the roads, pads, associated pipeline corridor, and adjacent land affected by the establishment of weeds due to this action. The operator shall consult with the Authorized Officer for acceptable weed control methods, which include following EPA and BLM requirements and policies.

11. Once the site is no longer in service or use, the site must undergo final abandonment. At final abandonment, the site and access roads must undergo "final" reclamation so that the character and productivity of the land are restored. Earthwork for final reclamation must be completed within six (6) months of the abandonment of the site. All pads and facility locations and roads must be reclaimed to a satisfactory revegetated, safe, and stable condition, unless an agreement is made with the landowner or BLM to keep the road and/or pad intact. After all disturbed areas have been satisfactorily prepared, these areas need to be revegetated with the seed mixture provided. Seeding should be accomplished by drilling on the contour whenever practical or by other approved methods. Seeding may need to be repeated until revegetation is successful, as determined by the BLM.

Operators shall contact a BLM surface protection specialist prior to surface abandonment operations for site specific objectives (Jim Amos: 575-234-5909).

12. The holder shall stockpile an adequate amount of topsoil where blading occurs. The topsoil to be stripped is approximately 6 inches in depth. The topsoil will be segregated from other spoil piles. The topsoil will be used for final reclamation.

13. The holder will reseed all disturbed areas. Seeding will be done according to the attached seeding requirements, using the following seed mix.

- | | |
|------------------------|-----------------------------|
| (X) seed mixture 1 | () seed mixture 3 |
| () seed mixture 2 | () seed mixture 4 |
| () seed mixture 2/LPC | () Aplomado Falcon Mixture |

14. In those areas where erosion control structures are required to stabilize soil conditions, the holder shall install such structures as are suitable for the specific soil conditions being encountered and which are in accordance with sound management practices. Any earth work will require prior approval by the Authorized Officer.

15. Open-topped Tanks - The operator will take actions necessary to prevent wildlife and livestock access, including avian wildlife, to all open-topped tanks that contain or have the potential to contain salinity sufficient to cause harm to wildlife or livestock, hydrocarbons, or Resource Conservation and Recovery Act of 1976-exempt hazardous substances. At a minimum, the operator will net, screen, or cover open-topped tanks to exclude wildlife and livestock and prevent mortality. If the operator uses netting, the operator will cover and secure the open portion of the tank to prevent wildlife entry. The operator will net, screen, or cover the tanks until the operator removes the tanks from the location or the tanks no longer contain substances that could be harmful to wildlife or livestock. Use a maximum netting mesh size of 1 ½ inches. The netting must not be in contact with fluids and must not have holes or gaps

16. The operator will prevent all hazardous, poisonous, flammable, and toxic substances from coming into contact with soil and water. At a minimum, the operator will install and maintain an

impervious secondary containment system for any tank or barrel containing hazardous, poisonous, flammable, or toxic substances sufficient to contain the contents of the tank or barrel and any drips, leaks, and anticipated precipitation. The operator will dispose of fluids within the containment system that do not meet applicable state or U. S. Environmental Protection Agency livestock water standards in accordance with state law; the operator must not drain the fluids to the soil or ground. The operator will design, construct, and maintain all secondary containment systems to prevent wildlife and livestock exposure to harmful substances. At a minimum, the operator will install effective wildlife and livestock enclosure systems such as fencing, netting, expanded metal mesh, lids, and grate covers. Use a maximum netting mesh size of 1 ½ inches.

17. Open-Vent Exhaust Stack Enclosures – The operator will construct, modify, equip, and maintain all open-vent exhaust stacks on production equipment to prevent birds and bats from entering, and to discourage perching, roosting, and nesting. (Recommended enclosure structures on open-vent exhaust stacks are in the shape of a cone.) Production equipment includes, but may not be limited to, tanks, heater-treaters, separators, dehydrators, flare stacks, in-line units, and compressor mufflers.

18. Containment Structures - Proposed production facilities such as storage tanks and other vessels will have a secondary containment structure that is constructed to hold the capacity of 1.5 times the largest tank, plus freeboard to account for precipitation, unless more stringent protective requirements are deemed necessary.

19. Special Stipulations:

- The entire well pad will be bermed to prevent oil, salt, and other chemical contaminants from leaving the well pad. Topsoil shall not be used to construct the berm. No water flow from the uphill side(s) of the pad shall be allowed to enter the well pad. The berm shall be maintained through the life of the well and after interim reclamation has been completed.
- Any water erosion that may occur due to the construction of the well pad during the life of the well will be corrected within two weeks and proper measures will be taken to prevent future erosion.
-

Special Status Plant Species (SSPS) Habitat Stipulations:

- Vehicles and equipment will be kept on existing roads and approved surfaces only, and will avoid travel across undisturbed surfaces; workers will be instructed not to park off the roads or ROW in undisturbed areas.
- Alterations to project design and additions of project components will require SSPS surveys and re-analysis of impacts if those project elements intersect SSPS suitable habitat.

Hydrology:

The entire well pad(s) will be bermed to prevent oil, salt, and other chemical contaminants from leaving the well pad. The compacted berm shall be constructed at a minimum of 12 inches with impermeable mineral material (e.g. caliche). Topsoil shall not be used to construct the berm. No water flow from the uphill side(s) of the pad shall be allowed to enter the well pad. The integrity of the berm shall be maintained around the surfaced pad throughout the life of the well and around the downsized pad after interim reclamation has been completed. Any water erosion that may occur due to the construction of the well pad during the life of the well will be quickly corrected and proper measures will be taken to prevent future erosion. Stockpiling of topsoil is required. The top soil shall be stockpiled in an appropriate location to prevent loss of soil due to water or wind erosion and not used for berming or erosion control. If fluid collects within the bermed area, the fluid must be vacuumed into a safe container and disposed of properly at a state approved facility.

TANK BATTERY:

Tank battery locations will be lined and bermed. A 20 mil permanent liner will be installed with a 4 oz. felt backing to prevent tears or punctures. Tank battery berms must

be large enough to contain 1 ½ times the content of the largest tank or 24-hour production, whichever is greater. Automatic shut off, check valves, or similar systems will be installed for tanks to minimize the effects of catastrophic line failures used in production or drilling.

BURIED/SURFACE LINE(S):

When crossing ephemeral drainages, the pipeline(s) will be buried to a minimum depth of 48 inches from the top of pipe to ground level. Erosion control methods such as gabions and/or rock aprons should be placed on both up and downstream sides of the pipeline crossing. In addition, curled (weed free) wood/straw fiber wattles/logs and/or silt fences should be placed on the downstream side for sediment control during construction and maintained until soils and vegetation have stabilized. Water bars should be placed within the ROW to divert and dissipate surface runoff. A pipeline access road is not permitted to cross these ephemeral drainages. Traffic should be diverted to a preexisting route. Additional seeding may be required in floodplains and drainages to restore energy dissipating vegetation.

Prior to pipeline installation/construction a leak detection plan will be developed. The method(s) could incorporate gauges to detect pressure drops, siting valves and lines so they can be visually inspected periodically or installing electronic sensors to alarm when a leak is present. The leak detection plan will incorporate an automatic shut off system that will be installed for proposed pipelines to minimize the effects of an undesirable event.

ELECTRIC LINE(S):

Any water erosion that may occur due to the construction of overhead electric line and during the life of the power line will be quickly corrected and proper measures will be taken to prevent future erosion. A power pole should not be placed in drainages, playas, wetlands, riparian areas, or floodplains and must span across the features at a distance away that would not promote further erosion.

TEMPORARY USE FRESH WATER FRAC LINE(S):

Once the temporary use exceeds the timeline of 180 days and/or with a 90-day extension status; further analysis will be required if the applicant pursues to turn the temporary ROW into a permanent ROW.

Karst:

Construction Mitigation

In order to mitigate the impacts from construction activities on cave and karst resources, the following Conditions of Approval will apply to this APD or project:

General Construction:

- No blasting
- The BLM, Carlsbad Field Office, will be informed immediately if any subsurface drainage channels, cave passages, or voids are penetrated during construction, and no additional construction shall occur until clearance has been issued by the Authorized Officer.
- All linear surface disturbance activities will avoid sinkholes and other karst features to lessen the possibility of encountering near surface voids during construction, minimize changes to runoff, and prevent untimely leaks and spills from entering the karst drainage system.
- All spills or leaks will be reported to the BLM immediately for their immediate and proper treatment.

Pad Construction:

- The pad will be constructed and leveled by adding the necessary fill and caliche – no blasting.
- The entire perimeter of the well pad will be bermed to prevent oil, salt, and other chemical contaminants from leaving the well pad.
- The compacted berm shall be constructed at a minimum of 12 inches high with impermeable mineral material (e.g., caliche).
- No water flow from the uphill side(s) of the pad shall be allowed to enter the well pad.
- The topsoil stockpile shall be located outside the bermed well pad.
- Topsoil, either from the well pad or surrounding area, shall not be used to construct the berm.
- No storm drains, tubing or openings shall be placed in the berm.
- If fluid collects within the bermed area, the fluid must be vacuumed into a safe container and disposed of properly at a state approved facility.
- The integrity of the berm shall be maintained around the surfaced pad throughout the life of the well and around the downsized pad after interim reclamation has been completed.
- Any access road entering the well pad shall be constructed so that the integrity of the berm height surrounding the well pad is not compromised (i.e. an access road crossing the berm cannot be lower than the berm height).
- Following a rain event, all fluids will vacuumed off of the pad and hauled off-site and disposed at a proper disposal facility.

Road Construction:

- Turnout ditches and drainage leadoffs will not be constructed in such a manner as to alter the natural flow of water into or out of cave or karst features.
- Special restoration stipulations or realignment may be required if subsurface features are discovered during construction.

Buried Pipeline/Cable Construction:

- Rerouting of the buried line(s) may be required if a subsurface void is encountered during construction to minimize the potential subsidence/collapse of the feature(s) as well as the possibility of leaks/spills entering the karst drainage system.

Powerline Construction:

- Smaller powerlines will be routed around sinkholes and other karst features to avoid or lessen the possibility of encountering near surface voids and to minimize changes to runoff or possible leaks and spills from entering karst systems.
- Larger powerlines will adjust their pole spacing to avoid cave and karst features.
- Special restoration stipulations or realignment may be required if subsurface voids are encountered.

Surface Flowlines Installation:

- Flowlines will be routed around sinkholes and other karst features to minimize the possibility of leaks/spills from entering the karst drainage system.

Drilling Mitigation

Federal regulations and standard Conditions of Approval applied to all APDs require that adequate measures are taken to prevent contamination to the environment. Due to the extreme sensitivity of the cave and karst resources in this project area, the following additional Conditions of Approval will be added to this APD.

To prevent cave and karst resource contamination the following will be required:

- Closed loop system using steel tanks - all fluids and cuttings will be hauled off-site and disposed of properly at an authorized site
- Rotary drilling with fresh water where cave or karst features are expected to prevent contamination of freshwater aquifers.

- Directional drilling is only allowed at depths greater than 100 feet below the cave occurrence zone to prevent additional impacts resulting from directional drilling.
- Lost circulation zones will be logged and reported in the drilling report so BLM can assess the situation and work with the operator on corrective actions.
- Additional drilling, casing, and cementing procedures to protect cave zones and fresh water aquifers. See drilling COAs.

Production Mitigation

In order to mitigate the impacts from production activities and due to the nature of karst terrane, the following Conditions of Approval will apply to this APD:

- Tank battery locations and facilities will be bermed and lined with a 20 mil thick permanent liner that has a 4 oz. felt backing, or equivalent, to prevent tears or punctures. Tank battery berms must be large enough to contain 1 ½ times the content of the largest tank.
- Development and implementation of a leak detection system to provide an early alert to operators when a leak has occurred.
- Automatic shut off, check valves, or similar systems will be installed for pipelines and tanks to minimize the effects of catastrophic line failures used in production or drilling.

Residual and Cumulative Mitigation

The operator will perform annual pressure monitoring on all casing annuli and reported in a sundry notice. If the test results indicated a casing failure has occurred, remedial action will be taken to correct the problem to the BLM's approval.

Plugging and Abandonment Mitigation

Upon well abandonment in high cave karst areas additional plugging conditions of approval may be required. The BLM will assess the situation and work with the operator to ensure proper plugging of the wellbore.

VIII. INTERIM RECLAMATION

During the life of the development, all disturbed areas not needed for active support of production operations should undergo interim reclamation in order to minimize the environmental impacts of development on other resources and uses.

Within six (6) months of well completion, operators should work with BLM surface management specialists (Jim Amos: 575-234-5909) to devise the best strategies to reduce

the size of the location. Interim reclamation should allow for remedial well operations, as well as safe and efficient removal of oil and gas.

During reclamation, the removal of caliche is important to increasing the success of revegetating the site. Removed caliche that is free of contaminants may be used for road repairs, fire walls or for building other roads and locations. In order to operate the well or complete workover operations, it may be necessary to drive, park and operate on restored interim vegetation within the previously disturbed area. Disturbing revegetated areas for production or workover operations will be allowed. If there is significant disturbance and loss of vegetation, the area will need to be revegetated. Communicate with the appropriate BLM office for any exceptions/exemptions if needed.

All disturbed areas after they have been satisfactorily prepared need to be reseeded with the seed mixture provided below.

Upon completion of interim reclamation, the operator shall submit a Sundry Notices and Reports on Wells, Subsequent Report of Reclamation (Form 3160-5).

IX. FINAL ABANDONMENT & RECLAMATION

At final abandonment, well locations, production facilities, and access roads must undergo "final" reclamation so that the character and productivity of the land are restored.

Earthwork for final reclamation must be completed within six (6) months of well plugging. All pads, pits, facility locations and roads must be reclaimed to a satisfactory revegetated, safe, and stable condition, unless an agreement is made with the landowner or BLM to keep the road and/or pad intact.

After all disturbed areas have been satisfactorily prepared, these areas need to be revegetated with the seed mixture provided below. Seeding should be accomplished by drilling on the contour whenever practical or by other approved methods. Seeding may need to be repeated until revegetation is successful, as determined by the BLM.

Operators shall contact a BLM surface protection specialist prior to surface abandonment operations for site specific objectives (Jim Amos: 575-234-5909).

Seed Mixture 1 for Loamy Sites

Holder shall seed all disturbed areas with the seed mixture listed below. The seed mixture shall be planted in the amounts specified in pounds of pure live seed (PLS)* per acre. There shall be no primary or secondary noxious weeds in the seed mixture. Seed shall be tested and the viability testing of seed will be done in accordance with State law(s) and within nine (9) months prior to purchase. Commercial seed shall be either certified or registered seed. The seed container shall be tagged in accordance with State law(s) and available for inspection by the Authorized Officer.

Seed shall be planted using a drill equipped with a depth regulator to ensure proper depth regulator to ensure proper depth of planting where drilling is possible. The seed mixture shall be evenly and uniformly planted over the disturbed area (small/heavier seeds have a tendency to drop the bottom of the drill and are planted first). Holder shall take appropriate measures to ensure this does not occur. Where drilling is not possible, seed shall be broadcast and the area shall be raked or chained to cover the seed. When broadcasting the seed, the pounds per acre shall be doubled. The seeding shall be repeated until a satisfactory stand is established as determined by the Authorized Officer. Evaluation of growth may not be made before completion of at least one full growing season after seeding.

Species to be planted in pounds of pure live seed* per acre:

<u>Species</u>	<u>lb/acre</u>
Plains lovegrass (<i>Eragrostis intermedia</i>)	0.5
Sand dropseed (<i>Sporobolus cryptandrus</i>)	1.0
Sideoats grama (<i>Bouteloua curtipendula</i>)	5.0
Plains bristlegrass (<i>Setaria macrostachya</i>)	2.0

*Pounds of pure live seed:

Pounds of seed x percent purity x percent germination = pounds pure live seed



U.S. Department of the Interior
BUREAU OF LAND MANAGEMENT

Operator Certification Data Report

12/09/2019

Operator Certification

I hereby certify that I, or someone under my direct supervision, have inspected the drill site and access route proposed herein; that I am familiar with the conditions which currently exist; that I have full knowledge of state and Federal laws applicable to this operation; that the statements made in this APD package are, to the best of my knowledge, true and correct; and that the work associated with the operations proposed herein will be performed in conformity with this APD package and the terms and conditions under which it is approved. I also certify that I, or the company I represent, am responsible for the operations conducted under this application. These statements are subject to the provisions of 18 U.S.C. 1001 for the filing of false statements.

NAME: Cade LaBolt

Signed on: 04/05/2019

Title: Associate Landman

Street Address:

City:

State:

Zip:

Phone: (972)629-2158

Email address: cade.labolt@matadorresources.com

Field Representative

Representative Name:

Street Address:

City:

State:

Zip:

Phone:

Email address:



U.S. Department of the Interior
BUREAU OF LAND MANAGEMENT

Application Data Report

12/09/2019

APD ID: 10400040093

Submission Date: 04/05/2019

Highlighted data
reflects the most
recent changes

Operator Name: MATADOR PRODUCTION COMPANY

Well Name: NOEL HENSLEY FED COM

Well Number: 201H

[Show Final Text](#)

Well Type: CONVENTIONAL GAS WELL

Well Work Type: Drill

Section 1 - General

APD ID: 10400040093

Tie to previous NOS? N

Submission Date: 04/05/2019

BLM Office: CARLSBAD

User: Cade LaBolt

Title: Associate Landman

Federal/Indian APD: FED

Is the first lease penetrated for production Federal or Indian? FED

Lease number: NMNM018613A

Lease Acres: 760.24

Surface access agreement in place?

Allotted?

Reservation:

Agreement in place? NO

Federal or Indian agreement:

Agreement number:

Agreement name:

Keep application confidential? YES

Permitting Agent? NO

APD Operator: MATADOR PRODUCTION COMPANY

Operator letter of designation:

Operator Info

Operator Organization Name: MATADOR PRODUCTION COMPANY

Operator Address: 5400 LBJ Freeway, Suite 1500

Zip: 75240

Operator PO Box:

Operator City: Dallas

State: TX

Operator Phone: (972)371-5200

Operator Internet Address: amonroe@matadorresources.com

Section 2 - Well Information

Well in Master Development Plan? NO

Master Development Plan name:

Well in Master SUPO? NO

Master SUPO name:

Well in Master Drilling Plan? NO

Master Drilling Plan name:

Well Name: NOEL HENSLEY FED COM

Well Number: 201H

Well API Number:

Field/Pool or Exploratory? Field and Pool

Field Name: PURPLE SAGE
WOLFCAMP GAS

Pool Name:

Is the proposed well in an area containing other mineral resources? OTHER, NATURAL GAS, CO2, OIL

Operator Name: MATADOR PRODUCTION COMPANY

Well Name: NOEL HENSLEY FED COM

Well Number: 201H

Is the proposed well in an area containing other mineral resources? OTHER,NATURAL GAS,CO2,OIL

Is the proposed well in a Helium production area? N **Use Existing Well Pad?** NO **New surface disturbance?**

Type of Well Pad: MULTIPLE WELL

Multiple Well Pad Name: NOEL **Number:** 1&2

Well Class: HORIZONTAL

HENSLEY SLOT

Number of Legs: 1

Well Work Type: Drill

Well Type: CONVENTIONAL GAS WELL

Describe Well Type:

Well sub-Type: CONFIRMATION

Describe sub-type:

Distance to town:

Distance to nearest well: 1540 FT

Distance to lease line: 250 FT

Reservoir well spacing assigned acres Measurement: 320.32 Acres

Well plat: Noel_Hensley_Fed_Com_201H_C102__Signed_20190326155404.pdf

Well work start Date: 02/01/2020

Duration: 30 DAYS

Section 3 - Well Location Table

Survey Type: RECTANGULAR

Describe Survey Type:

Datum: NAD83

Vertical Datum: NAVD88

Survey number:

Reference Datum:

Wellbore	NS-Foot	NS Indicator	EW-Foot	EW Indicator	Twsp	Range	Section	Aliquot/Lot/Tract	Latitude	Longitude	County	State	Meridian	Lease Type	Lease Number	Elevation	MD	TVD	Will this well produce
SHL Leg #1	250	FNL	138 1	FWL	24S	28E	19	Aliquot NENW 64	32.20973 64	- 104.1310 352	EDD Y	NEW MEXI CO	NEW MEXI CO	F	NMNM 018613 A	309 9	0	0	
KOP Leg #1	350	FNL	330	FWL	24S	28E	19	Aliquot NWN W	32.21025 74	- 104.1344 351	EDD Y	NEW MEXI CO	NEW MEXI CO	F	NMNM 018613 A	- 562 5	881 3	872 4	
PPP Leg #1-1	330	FNL	330	FWL	24S	28E	19	Aliquot NWN W	32.20948 65	- 104.1344 347	EDD Y	NEW MEXI CO	NEW MEXI CO	F	NMNM 018613 A	- 562 5	881 3	872 4	

Operator Name: MATADOR PRODUCTION COMPANY

Well Name: NOEL HENSLEY FED COM

Well Number: 201H

Wellbore	NS-Foot	NS Indicator	EW-Foot	EW Indicator	Twsp	Range	Section	Aliquot/Lot/Tract	Latitude	Longitude	County	State	Meridian	Lease Type	Lease Number	Elevation	MD	TVD	Will this well produce
EXIT Leg #1	330	FSL	330	FWL	24S	28E	19	Aliquot SWS W	32.19668 65	- 104.1344 334	EDD Y	NEW MEXI CO	NEW MEXI CO	F	NMNM 018613 A	- 620 3	140 00	930 2	
BHL Leg #1	240	FSL	330	FWL	24S	28E	19	Aliquot SWS W	32.19643 91	- 104.1344 333	EDD Y	NEW MEXI CO	NEW MEXI CO	F	NMNM 018613 A	- 620 3	141 66	930 2	

District I
1625 N French Dr., Hobbs, NM 88240
Phone: (575) 393-6161 Fax: (575) 393-0720
District II
811 S. First St., Artesia, NM 88210
Phone: (575) 748-1283 Fax: (575) 748-9720
District III
1000 Rio Brazos Road, Aztec, NM 87410
Phone: (505) 334-6178 Fax: (505) 334-6170
District IV
1220 S. St. Francis Dr., Santa Fe, NM 87505
Phone: (505) 476-3460 Fax: (505) 476-3462

State of New Mexico
Energy, Minerals & Natural Resources
Department
OIL CONSERVATION DIVISION
1220 South St. Francis Dr.
Santa Fe, NM 87505

FORM C-102
Revised August 1, 2011
Submit one copy to appropriate
District Office

☐ AMENDED REPORT

WELL LOCATION AND ACREAGE DEDICATION PLAT

¹ API Number		² Pool Code	³ Pool Name
⁴ Property Code	⁵ Property Name NOEL HENSLEY FED COM		⁶ Well Number 201H
⁷ OGRID No.	⁸ Operator Name MATADOR PRODUCTION COMPANY		⁹ Elevation 3099'

¹⁰Surface Location

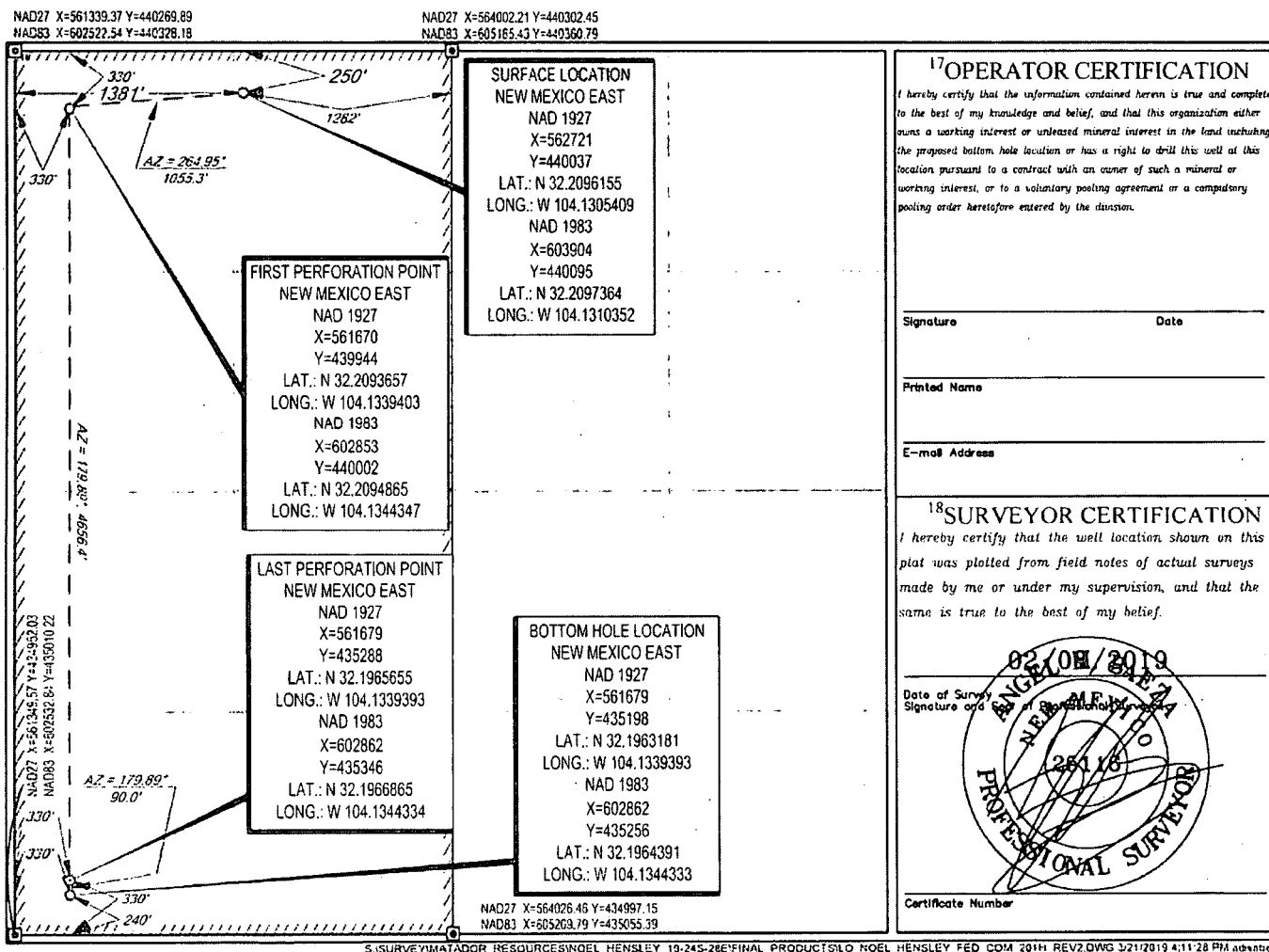
UL or lot no.	Section	Township	Range	Lot Idn	Feet from the	North/South line	Feet from the	East/West line	County
C	19	24-S	28-E	-	250'	NORTH	1381'	WEST	EDDY

¹¹Bottom Hole Location If Different From Surface

UL or lot no.	Section	Township	Range	Lot Idn	Feet from the	North/South line	Feet from the	East/West line	County
4	19	24-S	28-E	-	240'	SOUTH	330'	WEST	EDDY

¹² Dedicated Acres 320.32	¹³ Joint or Infill	¹⁴ Consolidation Code	¹⁵ Order No.
---	-------------------------------	----------------------------------	-------------------------


No allowable will be assigned to this completion until all interests have been consolidated or a non-standard unit has been approved by the division.





SECTION 19 TWP 24-S RGE 28-E SURVEY N.M.P.M.
COUNTY EDDY STATE NM ELEVATION 3099'
DESCRIPTION 250' FNL & 1381' FWL

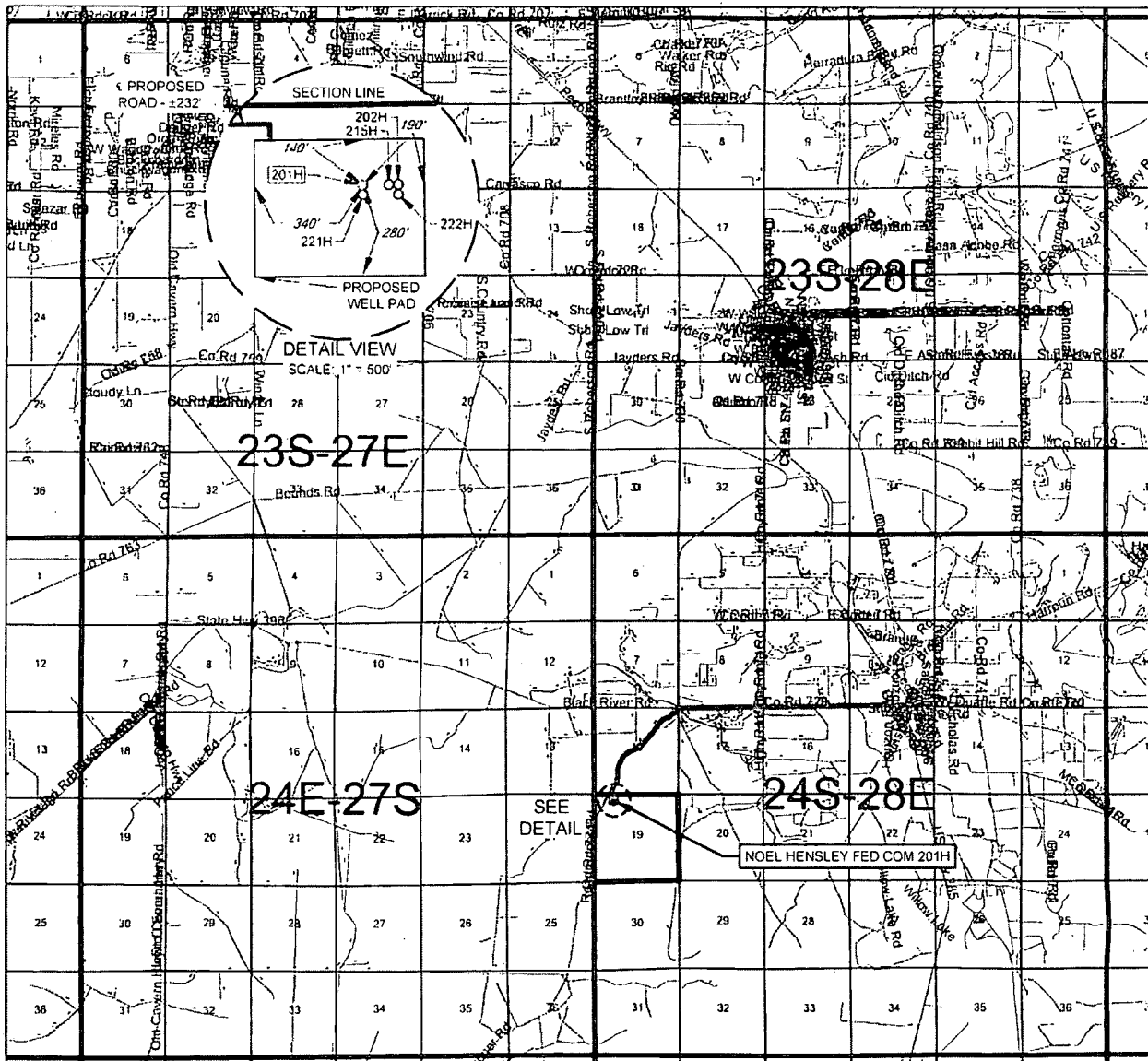
SCALE: 1" = 2000'



0' 1000' 2000'

1400 EVERMAN PARKWAY, Ste. 148 • FT. WORTH, TEXAS 76140
TELEPHONE (817) 744-7512 • FAX (817) 744-7554
2903 NORTH BIG SPRING • MIDLAND, TEXAS 79705
TELEPHONE: (432) 682-1653 OR (800) 767-1653 • FAX (432) 682-1743
WWW.TOPOGRAPHIC.COM

VICINITY MAP



LEASE NAME & WELL NO.: NOEL HENSLEY FED COM 201H

SECTION 19 TWP 24-S RGE 28-E SURVEY N.M.P.M.

COUNTY EDDY STATE NM

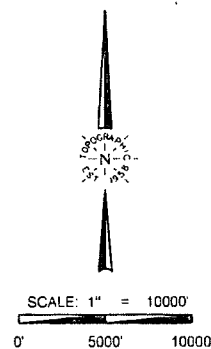
DESCRIPTION 250' FNL & 1381' FWL

DISTANCE & DIRECTION

FROM INT. OF PECOS HWY. & BLACK RIVER VILLAGE RD., GO WEST ON BLACK RIVER VILLAGE RD. ±2.7 MILES, THENCE SOUTHWEST (LEFT) ON ROADRUNNER RD. ±1.4 MILES, THENCE EAST (LEFT) ON A PROPOSED RD. ±232 FEET TO A POINT ±322 FEET NORTHWEST OF THE LOCATION.

THIS EASEMENT/SERVITUDE LOCATION SHOWN HEREON HAS BEEN SURVEYED ON THE GROUND UNDER MY SUPERVISION AND PREPARED ACCORDING TO THE EVIDENCE FOUND AT THE TIME OF SURVEY, AND DATA PROVIDED BY MATADOR PRODUCTION COMPANY. THIS CERTIFICATION IS MADE AND LIMITED TO THOSE PERSONS OR ENTITIES SHOWN ON THE FACE OF THIS PLAT AND IS NON-TRANSFERABLE. THIS SURVEY IS CERTIFIED FOR THIS TRANSACTION ONLY.

ALL BEARINGS, DISTANCES, AND COORDINATE VALUES CONTAINED HEREON ARE GRID BASED UPON THE NEW MEXICO COORDINATE SYSTEM OF 1983, EAST ZONE, U.S. SURVEY FEET.

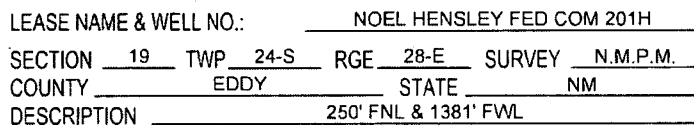


TOPOGRAPHIC
LOYALTY INNOVATION LEGACY

1400 EVERMAN PARKWAY, Ste. 146 • FT. WORTH, TEXAS 76140
TELEPHONE: (817) 744-7512 • FAX (817) 744-7554
2903 NORTH BIG SPRING • MIDLAND, TEXAS 79703
TELEPHONE: (432) 882-1653 OR (800) 787-1653 • FAX (432) 882-1743
WWW.TOPOGRAPHIC.COM



Matador
PRODUCTION COMPANY



FROM INT. OF PECOS HWY. & BLACK RIVER VILLAGE RD., GO WEST ON
BLACK RIVER VILLAGE RD. ±2.7 MILES, THENCE SOUTHWEST (LEFT)
ON ROADRUNNER RD. ±1.4 MILES, THENCE EAST (LEFT) ON A
PROPOSED RD. ±232 FEET TO A POINT ±322 FEET NORTHWEST OF
THE LOCATION.

AS OF THE DATE OF SURVEY, ALL ABOVE GROUND APPURTENANCES WITHIN 300' OF THE STAKED LOCATION ARE SHOWN HEREON.



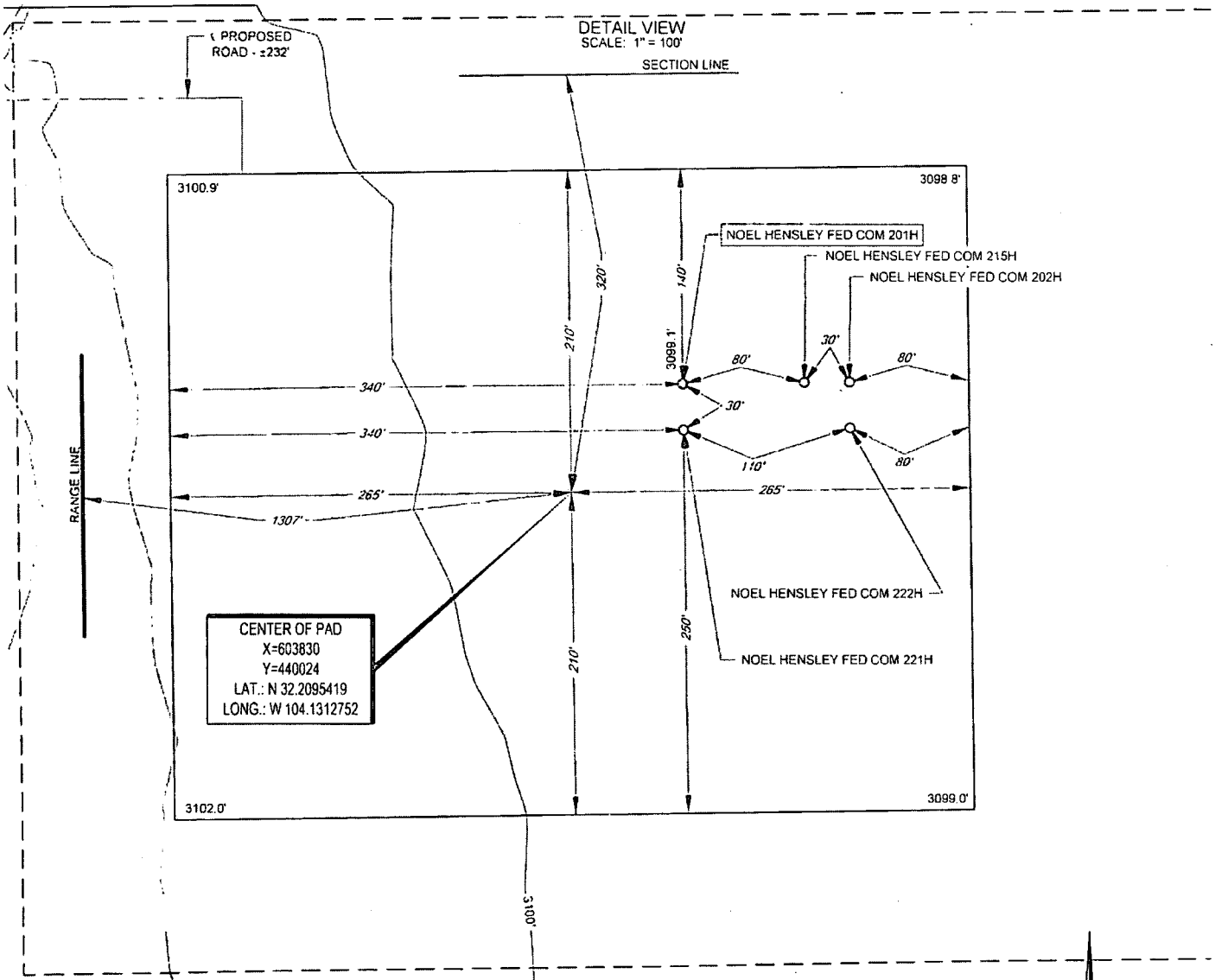
MARCH 21, 2019



1400 EVERMAN PARKWAY, Ste. 146 • FT. WORTH, TEXAS 76140
TELEPHONE: (817) 744-7512 • FAX (817) 744-7554
2903 NORTH BIG SPRING • MIDLAND, TEXAS 79705
TELEPHONE: (432) 682-1653 OR (800) 767-1653 • FAX (432) 682-1743
WWW.TOPOGRAPHIC.COM



SECTION 19, TOWNSHIP 24-S, RANGE 28-E, N.M.P.M.
EDDY COUNTY, NEW MEXICO

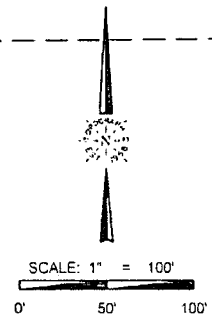


LEASE NAME & WELL NO.: NOEL HENSLEY FED COM 201H
201H LATITUDE N 32.2097364 201H LONGITUDE W 104.1310352

LEGEND

- PROPOSED ROAD
- RANGE LINE
- SECTION LINE

CENTER OF PAD IS 320' FNL & 1307' FWL



ALL BEARINGS, DISTANCES, AND COORDINATE VALUES CONTAINED HEREON ARE GRID BASED UPON THE NEW MEXICO COORDINATE SYSTEM OF 1983, EAST ZONE, U.S. SURVEY FEET

THIS PROPOSED PAD SITE LOCATION SHOWN HEREON HAS BEEN SURVEYED ON THE GROUND UNDER MY SUPERVISION AND PREPARED ACCORDING TO THE EVIDENCE FOUND AT THE TIME OF SURVEY, AND DATA PROVIDED BY MATADOR PRODUCTION COMPANY. THIS CERTIFICATION IS MADE AND LIMITED TO THOSE PERSONS OR ENTITIES SHOWN ON THE FACE OF THIS PLAT AND IS NON-TRANSFERABLE. THIS SURVEY IS CERTIFIED FOR THIS TRANSACTION ONLY.



TOPOGRAPHIC
LOYALTY INNOVATION LEGACY

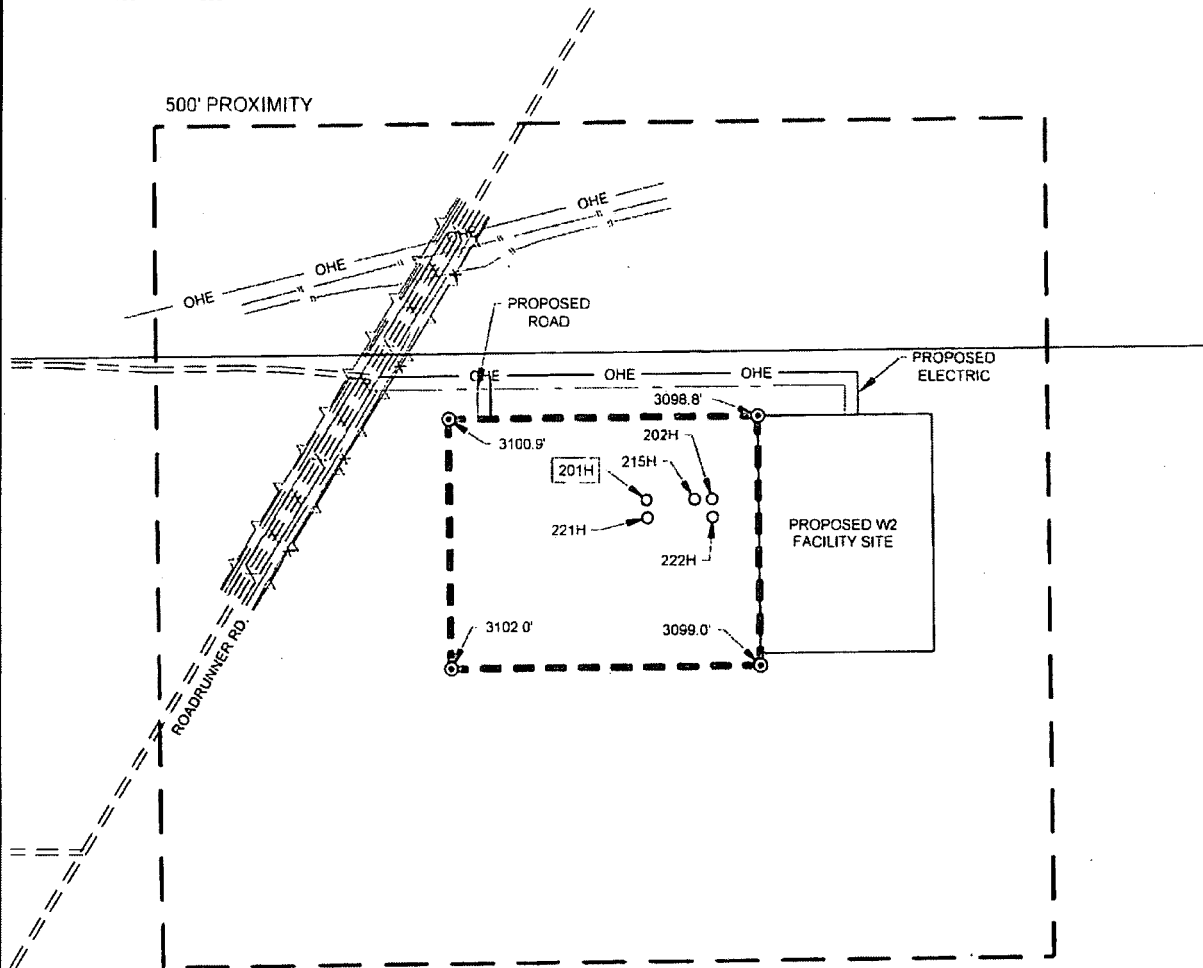
1400 EVERMAN PARKWAY, Ste. 146 • FT. WORTH, TEXAS 76140
TELEPHONE (817) 744-7512 • FAX (817) 744-7554
2903 NORTH BIG SPRING • MIDLAND, TEXAS 79705
TELEPHONE: (432) 682-1653 OR (800) 767-1653 • FAX (432) 682-1743
WWW.TOPOGRAPHIC.COM

ORIGINAL DOCUMENT SIZE: 8.5" X 11"

SCALE: 1" = 300'

0' 150' 300'

SECTION 19, TOWNSHIP 24-S, RANGE 28-E, N.M.P.M.
EDDY COUNTY, NEW MEXICO



LEGEND

- PROPOSED SITE
- 500' PROXIMITY
- PROPOSED ROAD
- SECTION LINE
- OHE --- OVERHEAD ELECTRIC
- X --- FENCE LINE
- --- EXISTING PIPELINE
- --- TOE OF DITCH
- --- TOP OF DITCH
- OHE --- PROPOSED ELECTRIC
- --- PROPOSED FLOWLINE
- ⊙ IRON ROD SET



TOPOGRAPHIC
LOYALTY INNOVATION LEGACY

1400 EVERMAN PARKWAY, Ste. 148 • FT. WORTH, TEXAS 75140
TELEPHONE: (817) 744-7512 • FAX (817) 744-7554
2903 NORTH BIG SPRING • MIDLAND, TEXAS 79705
TELEPHONE: (432) 682-1653 OR (800) 767-1653 • FAX (432) 682-1743
WWW.TOPOGRAPHIC.COM



Angel M. Baeza, P.S. No. 25116
MARCH 21, 2019

NOEL HENSLEY FED COM
201H
PROXIMITY MAP

REVISION:

EAH 03/21/19

NOTES:

1. ORIGINAL DOCUMENT SIZE: 8.5" X 11"
2. ALL BEARINGS, DISTANCES, AND COORDINATE VALUES CONTAINED HEREIN ARE GRID BASED UPON THE NEW MEXICO COORDINATE SYSTEM OF 1983, EAST ZONE, U.S. SURVEY FEET.
3. CERTIFICATION IS MADE ONLY TO THE LOCATION OF THIS EASEMENT, IN RELATION TO THE EVIDENCE FOUND DURING A FIELD SURVEY, MADE ON THE GROUND, UNDER MY SUPERVISION, AND USING DOCUMENTATION PROVIDED BY MATADOR PRODUCTION COMPANY. ONLY UTILITIES/EASEMENTS THAT WERE VISIBLE ON THE DATE OF THIS SURVEY, WITHIN ADJOINING THIS EASEMENT, HAVE BEEN LOCATED AS SHOWN HEREON OF WHICH I HAVE KNOWLEDGE. THIS CERTIFICATION IS LIMITED TO THOSE PERSONS OR ENTITIES SHOWN ON THE FACE OF THIS PLAT AND IS NON-TRANSFERABLE, AND MADE FOR THIS TRANSACTION ONLY.
4. ADJOINER INFORMATION SHOWN FOR INFORMATIONAL PURPOSES ONLY.

DATE: 03/06/19

FILE: LO_NOEL_HENSLEY_FED_COM_201H_REV2

DRAWN BY: MML

SHEET: 7 OF 7



U.S. Department of the Interior
BUREAU OF LAND MANAGEMENT

Drilling Plan Data Report

12/09/2019

APD ID: 10400040093

Submission Date: 04/05/2019

Highlighted data
reflects the most
recent changes

Operator Name: MATADOR PRODUCTION COMPANY

Well Name: NOEL HENSLEY FED COM

Well Number: 201H

[Show Final Text](#)

Well Type: CONVENTIONAL GAS WELL

Well Work Type: Drill

Section 1 - Geologic Formations

Formation ID	Formation Name	Elevation	True Vertical Depth	Measured Depth	Lithologies	Mineral Resources	Producing Formation
1	TOP SALT	3099	800	800	SALT	NONE	N
2	CASTILE	2093	1006	1006	SALT	NONE	N
3	LAMAR	662	2437	2437	LIMESTONE, DOLOMIT E	NONE	N
4	BELL CANYON	563	2536	2536	SANDSTONE	NATURAL GAS, OIL	N
5	CHERRY CANYON	-187	3286	3286	SANDSTONE	NATURAL GAS, OIL	N
6	BRUSHY CANYON	-1387	4486	4486	SANDSTONE	NATURAL GAS, OIL	N
7	BONE SPRING LIME	-2917	6016	6016	LIMESTONE	NATURAL GAS, OIL	N
8	BONE SPRING 1ST	-3854	6953	6953	SANDSTONE	NATURAL GAS, OIL	N
9	BONE SPRING 2ND	-4122	7221	7221	OTHER : Carbonate	NATURAL GAS, OIL	N
10	BONE SPRING 2ND	-4608	7707	7707	SANDSTONE	NATURAL GAS, OIL	N
11	BONE SPRING 3RD	-4814	7913	7913	OTHER : Carbonate	NATURAL GAS, OIL	N
12	BONE SPRING 3RD	-5779	8878	9000	SANDSTONE	NATURAL GAS, OIL	N
13	WOLFCAMP	-6141	9240	9500	SHALE	NATURAL GAS, OIL	Y

Section 2 - Blowout Prevention

Operator Name: MATADOR PRODUCTION COMPANY

Well Name: NOEL HENSLEY FED COM

Well Number: 201H

Pressure Rating (PSI): 5M

Rating Depth: 12000

Equipment: A 12,000' 5000-psi BOP stack consisting of 3 rams with 2 pipe rams, 1 blind ram, and one annular preventer will be utilized below surface casing to TD. See attachments for BOP and choke manifold diagrams. An accumulator complying with Onshore Order #2 requirements for the pressure rating of the BOP stack will be present. A rotating head will also be installed as needed.

Requesting Variance? YES

Variance request: Matador requests a variance to have the option of running a speed head for setting the Intermediate 1, Intermediate 2, and Production Strings. The BOPs will not be tested again unless any flanges are separated. Matador requests a variance to drill this well using a co-flex line between the BOP and choke manifold. Certification for proposed co-flex hose is attached. The hose is not required by the manufacturer to be anchored. If the specific hose is not available, then one of equal or higher rating will be used. Matador requests a variance to have the option of batch drilling this well with other wells on the same pad. In the event that this well is batch drilled, the wellbore will be secured with a blind flange of like pressure. When the rig returns to this well and BOPs are installed, the operator will perform a full BOP test.

Testing Procedure: BOP will be inspected and operated as required in Onshore Order #2. Kelly cock and sub equipped with a full opening valve sized to fit the drill pipe and collars will be available on the rig floor in the open position. A third party company will test the BOPs. After setting surface casing, a minimum 5M BOPE system will be installed. Test pressures will be 250 psi low and 5000 psi high with the annular being tested to 250 psi low and 2500 psi high before drilling below surface shoe. In the event that the rig drills multiple wells on the pad and any seal subject to test pressures are broken, a full BOP test will be performed when the rig returns and the 5M BOPE system is re-installed.

Choke Diagram Attachment:

Noel_Hensley_Fed_Com__201H_5M_Choke_Manifold_Arrangement_20190403102228.pdf

Noel_Hensley_Fed_Com__201H_Co_Flex_Certs_20190403102306.pdf

BOP Diagram Attachment:

Noel_Hensley_Fed_Com__201H_5M_BOP_20190403102320.pdf

Section 3 - Casing

Casing ID	String Type	Hole Size	Csg Size	Condition	Standard	Tapered String	Top Set MD	Bottom Set MD	Top Set TVD	Bottom Set TVD	Top Set MSL	Bottom Set MSL	Calculated casing length MD	Grade	Weight	Joint Type	Collapse SF	Burst SF	Joint SF Type	Joint SF	Body SF Type	Body SF
1	SURFACE	17.5	13.375	NEW	API	N	0	400	0	400			400	J-55	54.5	BUTT	1.125	1.125	BUOY	1.8	BUOY	1.8
2	INTERMEDIATE	8.75	7.625	NEW	API	Y	0	2236	0	2236			2236	P-110	29.7	BUTT	1.125	1.125	BUOY	1.8	BUOY	1.8
3	INTERMEDIATE	12.25	9.625	NEW	API	N	0	2536	0	2536			2536	J-55	40	BUTT	1.125	1.125	BUOY	1.8	BUOY	1.8
4	PRODUCTION	6.75	5.5	NEW	API	Y	0	9518	0	9263			9518	P-110	20	OTHER - DWG/C-ISMS	1.125	1.125	BUOY	1.8	BUOY	1.8
5	INTERMEDIATE	8.75	7.625	NEW	API	Y	2236	9618	2236	9289			7382	P-110	29.7	OTHER - VAM HTF-NR	1.125	1.125	BUOY	1.8	BUOY	1.8

Operator Name: MATADOR PRODUCTION COMPANY

Well Name: NOEL HENSLEY FED COM

Well Number: 201H

Casing ID	String Type	Hole Size	Csg Size	Condition	Standard	Tapered String	Top Set MD	Bottom Set MD	Top Set TVD	Bottom Set TVD	Top Set MSL	Bottom Set MSL	Calculated casing length MD	Grade	Weight	Joint Type	Collapse SF	Burst SF	Joint SF Type	Joint SF	Body SF Type	Body SF
6	PRODUCTI ON	6.75	4.5	NEW	API	Y	9518	14166	9263	9302			4648	P- 110	13.5	OTHER - DWC/C-IS HT	1.12 5	1.12 5	BUOY	1.8	BUOY	1.8

Casing Attachments

Casing ID: 1 **String Type:** SURFACE

Inspection Document:

Spec Document:

Tapered String Spec:

Casing Design Assumptions and Worksheet(s):

Noel_Hensley_Fed_Com__201H_BLM_Casing_Design_Assumptions_4_string_20190403103344.pdf

Casing ID: 2 **String Type:** INTERMEDIATE

Inspection Document:

Spec Document:

Tapered String Spec:

Noel_Hensley_Fed_Com__201H_Tapered_String_Spec_20190403103103.pdf

Casing Design Assumptions and Worksheet(s):

Noel_Hensley_Fed_Com__201H_BLM_Casing_Design_Assumptions_4_string_20190403103332.pdf

Operator Name: MATADOR PRODUCTION COMPANY

Well Name: NOEL HENSLEY FED COM

Well Number: 201H

Casing Attachments

Casing ID: 3 **String Type:**INTERMEDIATE

Inspection Document:

Spec Document:

Tapered String Spec:

Casing Design Assumptions and Worksheet(s):

Noel_Hensley_Fed_Com__201H_BLM_Casing_Design_Assumptions_4_string_20190403103509.pdf

Casing ID: 4 **String Type:**PRODUCTION

Inspection Document:

Spec Document:

Tapered String Spec:

Noel_Hensley_Fed_Com__201H_Casing_Specs_5.5in_20lb_VAM_DWCC_IS_MS_20190403103918.PDF

Casing Design Assumptions and Worksheet(s):

Noel_Hensley_Fed_Com__201H_BLM_Casing_Design_Assumptions_4_string_20190403104246.pdf

Casing ID: 5 **String Type:**INTERMEDIATE

Inspection Document:

Spec Document:

Tapered String Spec:

Noel_Hensley_Fed_Com__201H_Tapered_String_Spec_20190403103706.pdf

Noel_Hensley_Fed_Com__201H_Casing_Specs_7.625in_29.7lb_VAM_HTF_NR_20190403103656.pdf

Casing Design Assumptions and Worksheet(s):

Noel_Hensley_Fed_Com__201H_BLM_Casing_Design_Assumptions_4_string_20190403104235.pdf

Operator Name: MATADOR PRODUCTION COMPANY

Well Name: NOEL HENSLEY FED COM

Well Number: 201H

Casing Attachments

Casing ID: 6 String Type: PRODUCTION

Inspection Document:

Spec Document:

Tapered String Spec:

Noel_Hensley_Fed_Com__201H_Casing_Specs_4.5in_13.5lb_VAM_DWCC_IS_HT_20190403104129.PDF

Casing Design Assumptions and Worksheet(s):

Noel_Hensley_Fed_Com__201H_BLM_Casing_Design_Assumptions_4_string_20190403104222.pdf

Section 4 - Cement

String Type	Lead/Tail	Stage Tool Depth	Top MD	Bottom MD	Quantity(sx)	Yield	Density	Cu Ft	Excess%	Cement type	Additives
SURFACE	Lead		0	100	100	1.72	12.5	176	50	Class C	5% NaCl + LCM
SURFACE	Tail		100	400	250	1.38	14.8	347	50	Class C	5% NaCl + LCM
INTERMEDIATE	Lead		0	2029	460	2.13	12.6	983	50	Class C	Bentonite + 1% CaCL2 + 8% NaCl + LCM
INTERMEDIATE	Tail		2029	2536	200	1.38	14.8	272	50	Class C	5% NaCl + LCM
INTERMEDIATE	Lead		2236	8618	410	2.13	11	866	35	Class TXI	Fluid Loss + Dispersant + Retarder + LCM
INTERMEDIATE	Tail		8618	9618	110	1.46	13.2	156	35	Class TXI	Fluid Loss + Dispersant + Retarder + LCM
INTERMEDIATE	Lead		2236	8618	410	2.13	11	866	35	Class TXI	Fluid Loss + Dispersant + Retarder + LCM
INTERMEDIATE	Tail		8618	9618	110	1.46	13.2	156	35	Class TXI	Fluid Loss + Dispersant + Retarder + LCM
PRODUCTION	Lead		9118	14166	640	1.17	14.5	754	10	Class H	Fluid Loss + Dispersant + Retarder + LCM

PRODUCTION	Lead		9118	14166	640	1.17	14.5	754	10	Class H	Fluid Loss + Dispersant + Retarder + LCM
------------	------	--	------	-------	-----	------	------	-----	----	---------	--

Operator Name: MATADOR PRODUCTION COMPANY

Well Name: NOEL HENSLEY FED COM

Well Number: 201H

String Type	Lead/Tail	Stage Tool Depth	Top MD	Bottom MD	Quantity(sx)	Yield	Density	Cu Ft	Excess%	Cement type	Additives
-------------	-----------	---------------------	--------	-----------	--------------	-------	---------	-------	---------	-------------	-----------

Section 5 - Circulating Medium

Mud System Type: Closed

Will an air or gas system be Used? NO

Description of the equipment for the circulating system in accordance with Onshore Order #2:

Diagram of the equipment for the circulating system in accordance with Onshore Order #2:

Describe what will be on location to control well or mitigate other conditions: An electronic Pason mud monitoring system complying with Onshore Order 2 will be used. All necessary mud products (bartie, bentonite, LCM) for weight addition and fluid loss control will be on location at all times. Mud program is subject to change due to hole conditions.

Describe the mud monitoring system utilized: An electronic Pason mud monitoring system complying with Onshore Order 2 will be used. All necessary mud products (bartie, bentonite, LCM) for weight addition and fluid loss control will be on location at all times. Mud program is subject to change due to hole conditions.

Circulating Medium Table

Top Depth	Bottom Depth	Mud Type	Min Weight (lbs/gal)	Max Weight (lbs/gal)	Density (lbs/cu ft)	Gel Strength (lbs/100 sqft)	PH	Viscosity (CP)	Salinity (ppm)	Filtration (cc)	Additional Characteristics
0	400	SPUD MUD	8.4	8.8							
400	2536	OTHER : Brine Water	9.5	10.2							
2536	9618	OTHER : FW/ Cut Brine	8.4	9.4							
9618	1416 6	OIL-BASED MUD	11.5	12.5							

Operator Name: MATADOR PRODUCTION COMPANY

Well Name: NOEL HENSLEY FED COM

Well Number: 201H

Section 6 - Test, Logging, Coring

List of production tests including testing procedures, equipment and safety measures:

No core or drill stem test is planned at this time

List of open and cased hole logs run in the well:

MUDLOG

Coring operation description for the well:

A 2-person mud logging program will be used from Intermediate 2 Casing shoe to TD

No electric logs are planned at this time. GR will be collected through the MWD tools from Intermediate casing to TD. CBL with CCL will be run as far as gravity will let it fall to top of curve.

Section 7 - Pressure

Anticipated Bottom Hole Pressure: 6047

Anticipated Surface Pressure: 4000.56

Anticipated Bottom Hole Temperature(F): 155

Anticipated abnormal pressures, temperatures, or potential geologic hazards? NO

Describe:

Contingency Plans geohazards description:

Contingency Plans geohazards attachment:

Hydrogen Sulfide drilling operations plan required? NO

Hydrogen sulfide drilling operations plan:

Section 8 - Other Information

Proposed horizontal/directional/multi-lateral plan submission:

Noel_Hensley_Fed_Com__201H_Directional_AC_Report_v1_20190405075229.pdf

Noel_Hensley_Fed_Com__201H_Directional_Well_Plan_v1_20190405075414.pdf

Other proposed operations facets description:

Other proposed operations facets attachment:

Noel_Hensley_Fed_Com__201H_4_String_Wellhead_Diagram_20190405075253.pdf

Variance_Request_20190405075318.pdf

Noel_Hensley_Fed_Com__201H_Drill_Plan_20190828085533.pdf

Other Variance attachment:

- Cementing: Collapse force equal to the gradient of planned cement slurries to planned depths and mud gradient in which the casing will be run above that (0.47 psi/ft) and an internal force equal to mud gradient of displacement fluid (0.43 psi/ft).

Burst: $DF_b=1.125$

- Pressure Test: Casing test per Onshore Oil and Gas Order No. 2 with an external force equal to the mud gradient in which the casing will be run (0.47 psi/ft), which is a more conservative backup force than pore pressure.
- Gas Kick Profile: Internal burst force at the shoe will be Fracture Pressure at that depth. Surface burst pressure will be fracture gradient at setting depth less a gas gradient to equivalent height of 100 bbl kick with Drill Pipe inside casing and mud gradient with which the next hole section will be run above that (0.65 psi/ft). External force will be equal to the mud gradient in which the casing will be run (0.47 psi/ft), which is a more conservative backup force than pore pressure.
- Fracture at Shoe with 1/3 BHP at Surface: Internal burst force at the shoe will be Fracture Pressure at setting depth. Internal burst force at surface will be 1/3 of pore pressure at setting depth. External force will be equal to the mud gradient in which the casing will be run (0.47 psi/ft) which is a more conservative backup force than pore pressure.

Tensile: $DF_t=1.8$

- Overpull: A downward force of 100,000 lbs is applied at the shoe along with the weight of the casing string utilizing the effects of buoyancy (9.0 ppg).

Production Casing

Collapse: $DF_c=1.125$

- Full Internal Evacuation: Collapse force equal to the mud gradient in which the casing will be run (0.65 psi/ft). The effects of axial load on collapse will be considered.
- Cementing: Collapse force equal to the gradient of planned cement slurries to planned depths and mud gradient in which the casing will be run above that (0.65 psi/ft) and an internal force equal to mud gradient of displacement fluid (0.43 psi/ft).

Burst: $DF_b=1.125$

- Pressure Test: 8000 psi casing test with an external force equal to the mud gradient in which the casing will be run (0.65 psi/ft), which is a more conservative backup force than pore pressure.
- Injection Down Casing: 9500 psi surface injection pressure plus an internal pressure gradient of 0.65 psi/ft with an external force equal to the mud gradient in which the casing will be run (0.65 psi/ft), which is a more conservative backup force than pore pressure.

Tensile: $DF_t=1.8$

- Overpull: A downward force of 100,000 lbs is applied at the shoe along with the weight of the casing string utilizing the effects of buoyancy (12.5 ppg).

Casing Design Criteria and Load Case Assumptions

Surface Casing

Collapse: $DF_c=1.125$

- Full Internal Evacuation: Collapse force equal to the mud gradient in which the casing will be run (0.43 psi/ft). The effects of axial load on collapse will be considered.
- Cementing: Collapse force equal to the gradient of planned cement slurries to planned depths and an internal force equal to mud gradient of displacement fluid (0.52 psi/ft).

Burst: $DF_b=1.125$

- Pressure Test: Casing test per Onshore Oil and Gas Order No. 2 with an external force equal to the mud gradient in which the casing will be run (0.43 psi/ft), which is a more conservative backup force than pore pressure.

Tensile: $DF_t=1.8$

- Overpull: A downward force of 100,000 lbs is applied at the shoe along with the weight of the casing string utilizing the effects of buoyancy (8.3 ppg).

Intermediate #1 Casing

Collapse: $DF_c=1.125$

- Full Internal Evacuation: Collapse force equal to the mud gradient in which the casing will be run (0.52 psi/ft). The effects of axial load on collapse will be considered.
- Cementing: Collapse force equal to the gradient of planned cement slurries to planned depths and an internal force equal to mud gradient of displacement fluid (0.43 psi/ft).

Burst: $DF_b=1.125$

- Pressure Test: Casing test per Onshore Oil and Gas Order No. 2 with an external force equal to the mud gradient in which the casing will be run (0.52 psi/ft), which is a more conservative backup force than pore pressure.
- Gas Kick Profile: Internal burst force at the shoe will be Fracture Pressure at that depth. Surface burst pressure will be fracture gradient at setting depth less a gas gradient to equivalent height of 50 bbl kick with Drill Pipe inside casing and mud gradient with which the next hole section will be run above that (0.47 psi/ft). External force will be equal to the mud gradient in which the casing will be run (0.52 psi/ft), which is a more conservative backup force than pore pressure.
- Fracture at Shoe with 1/3 BHP at Surface: Internal burst force at the shoe will be Fracture Pressure at setting depth. Internal burst force at surface will be 1/3 of pore pressure at setting depth. External force will be equal to the mud gradient in which the casing will be run (0.52 psi/ft) which is a more conservative backup force than pore pressure.

Tensile: $DF_t=1.8$

- Overpull: A downward force of 100,000 lbs is applied at the shoe along with the weight of the casing string utilizing the effects of buoyancy (10.0 ppg).

Intermediate #2 Casing

Collapse: $DF_c=1.125$

- Partial Internal Evacuation: Collapse force equal to the mud gradient in which the casing will be run (0.47 psi/ft). The effects of axial load on collapse will be considered. Internal force equal to gas gradient over half of setting depth and mud gradient with which the next hole section will be run below that (0.65 psi/ft).

- Cementing: Collapse force equal to the gradient of planned cement slurries to planned depths and mud gradient in which the casing will be run above that (0.47 psi/ft) and an internal force equal to mud gradient of displacement fluid (0.43 psi/ft).

Burst: $DF_b=1.125$

- Pressure Test: Casing test per Onshore Oil and Gas Order No. 2 with an external force equal to the mud gradient in which the casing will be run (0.47 psi/ft), which is a more conservative backup force than pore pressure.
- Gas Kick Profile: Internal burst force at the shoe will be Fracture Pressure at that depth. Surface burst pressure will be fracture gradient at setting depth less a gas gradient to equivalent height of 100 bbl kick with Drill Pipe inside casing and mud gradient with which the next hole section will be run above that (0.65 psi/ft). External force will be equal to the mud gradient in which the casing will be run (0.47 psi/ft), which is a more conservative backup force than pore pressure.
- Fracture at Shoe with 1/3 BHP at Surface: Internal burst force at the shoe will be Fracture Pressure at setting depth. Internal burst force at surface will be 1/3 of pore pressure at setting depth. External force will be equal to the mud gradient in which the casing will be run (0.47 psi/ft) which is a more conservative backup force than pore pressure.

Tensile: $DF_t=1.8$

- Overpull: A downward force of 100,000 lbs is applied at the shoe along with the weight of the casing string utilizing the effects of buoyancy (9.0 ppg).

Production Casing

Collapse: $DF_c=1.125$

- Full Internal Evacuation: Collapse force equal to the mud gradient in which the casing will be run (0.65 psi/ft). The effects of axial load on collapse will be considered.
- Cementing: Collapse force equal to the gradient of planned cement slurries to planned depths and mud gradient in which the casing will be run above that (0.65 psi/ft) and an internal force equal to mud gradient of displacement fluid (0.43 psi/ft).

Burst: $DF_b=1.125$

- Pressure Test: 8000 psi casing test with an external force equal to the mud gradient in which the casing will be run (0.65 psi/ft), which is a more conservative backup force than pore pressure.
- Injection Down Casing: 9500 psi surface injection pressure plus an internal pressure gradient of 0.65 psi/ft with an external force equal to the mud gradient in which the casing will be run (0.65 psi/ft), which is a more conservative backup force than pore pressure.

Tensile: $DF_t=1.8$

- Overpull: A downward force of 100,000 lbs is applied at the shoe along with the weight of the casing string utilizing the effects of buoyancy (12.5 ppg).

Casing Design Criteria and Load Case Assumptions

Surface Casing

Collapse: $DF_c=1.125$

- Full Internal Evacuation: Collapse force equal to the mud gradient in which the casing will be run (0.43 psi/ft). The effects of axial load on collapse will be considered.
- Cementing: Collapse force equal to the gradient of planned cement slurries to planned depths and an internal force equal to mud gradient of displacement fluid (0.52 psi/ft).

Burst: $DF_b=1.125$

- Pressure Test: Casing test per Onshore Oil and Gas Order No. 2 with an external force equal to the mud gradient in which the casing will be run (0.43 psi/ft), which is a more conservative backup force than pore pressure.

Tensile: $DF_t=1.8$

- Overpull: A downward force of 100,000 lbs is applied at the shoe along with the weight of the casing string utilizing the effects of buoyancy (8.3 ppg).

Intermediate #1 Casing

Collapse: $DF_c=1.125$

- Full Internal Evacuation: Collapse force equal to the mud gradient in which the casing will be run (0.52 psi/ft). The effects of axial load on collapse will be considered.
- Cementing: Collapse force equal to the gradient of planned cement slurries to planned depths and an internal force equal to mud gradient of displacement fluid (0.43 psi/ft).

Burst: $DF_b=1.125$

- Pressure Test: Casing test per Onshore Oil and Gas Order No. 2 with an external force equal to the mud gradient in which the casing will be run (0.52 psi/ft), which is a more conservative backup force than pore pressure.
- Gas Kick Profile: Internal burst force at the shoe will be Fracture Pressure at that depth. Surface burst pressure will be fracture gradient at setting depth less a gas gradient to equivalent height of 50 bbl kick with Drill Pipe inside casing and mud gradient with which the next hole section will be run above that (0.47 psi/ft). External force will be equal to the mud gradient in which the casing will be run (0.52 psi/ft), which is a more conservative backup force than pore pressure.
- Fracture at Shoe with 1/3 BHP at Surface: Internal burst force at the shoe will be Fracture Pressure at setting depth. Internal burst force at surface will be 1/3 of pore pressure at setting depth. External force will be equal to the mud gradient in which the casing will be run (0.52 psi/ft) which is a more conservative backup force than pore pressure.

Tensile: $DF_t=1.8$

- Overpull: A downward force of 100,000 lbs is applied at the shoe along with the weight of the casing string utilizing the effects of buoyancy (10.0 ppg).

Intermediate #2 Casing

Collapse: $DF_c=1.125$

- Partial Internal Evacuation: Collapse force equal to the mud gradient in which the casing will be run (0.47 psi/ft). The effects of axial load on collapse will be considered. Internal force equal to gas gradient over half of setting depth and mud gradient with which the next hole section will be run below that (0.65 psi/ft).

- Cementing: Collapse force equal to the gradient of planned cement slurries to planned depths and mud gradient in which the casing will be run above that (0.47 psi/ft) and an internal force equal to mud gradient of displacement fluid (0.43 psi/ft).

Burst: $DF_b=1.125$

- Pressure Test: Casing test per Onshore Oil and Gas Order No. 2 with an external force equal to the mud gradient in which the casing will be run (0.47 psi/ft), which is a more conservative backup force than pore pressure.
- Gas Kick Profile: Internal burst force at the shoe will be Fracture Pressure at that depth. Surface burst pressure will be fracture gradient at setting depth less a gas gradient to equivalent height of 100 bbl kick with Drill Pipe inside casing and mud gradient with which the next hole section will be run above that (0.65 psi/ft). External force will be equal to the mud gradient in which the casing will be run (0.47 psi/ft), which is a more conservative backup force than pore pressure.
- Fracture at Shoe with 1/3 BHP at Surface: Internal burst force at the shoe will be Fracture Pressure at setting depth. Internal burst force at surface will be 1/3 of pore pressure at setting depth. External force will be equal to the mud gradient in which the casing will be run (0.47 psi/ft) which is a more conservative backup force than pore pressure.

Tensile: $DF_t=1.8$

- Overpull: A downward force of 100,000 lbs is applied at the shoe along with the weight of the casing string utilizing the effects of buoyancy (9.0 ppg).

Production Casing

Collapse: $DF_c=1.125$

- Full Internal Evacuation: Collapse force equal to the mud gradient in which the casing will be run (0.65 psi/ft). The effects of axial load on collapse will be considered.
- Cementing: Collapse force equal to the gradient of planned cement slurries to planned depths and mud gradient in which the casing will be run above that (0.65 psi/ft) and an internal force equal to mud gradient of displacement fluid (0.43 psi/ft).

Burst: $DF_b=1.125$

- Pressure Test: 8000 psi casing test with an external force equal to the mud gradient in which the casing will be run (0.65 psi/ft), which is a more conservative backup force than pore pressure.
- Injection Down Casing: 9500 psi surface injection pressure plus an internal pressure gradient of 0.65 psi/ft with an external force equal to the mud gradient in which the casing will be run (0.65 psi/ft), which is a more conservative backup force than pore pressure.

Tensile: $DF_t=1.8$

- Overpull: A downward force of 100,000 lbs is applied at the shoe along with the weight of the casing string utilizing the effects of buoyancy (12.5 ppg).

Casing Design Criteria and Load Case Assumptions

Surface Casing

Collapse: $DF_c=1.125$

- Full Internal Evacuation: Collapse force equal to the mud gradient in which the casing will be run (0.43 psi/ft). The effects of axial load on collapse will be considered.
- Cementing: Collapse force equal to the gradient of planned cement slurries to planned depths and an internal force equal to mud gradient of displacement fluid (0.52 psi/ft).

Burst: $DF_b=1.125$

- Pressure Test: Casing test per Onshore Oil and Gas Order No. 2 with an external force equal to the mud gradient in which the casing will be run (0.43 psi/ft), which is a more conservative backup force than pore pressure.

Tensile: $DF_t=1.8$

- Overpull: A downward force of 100,000 lbs is applied at the shoe along with the weight of the casing string utilizing the effects of buoyancy (8.3 ppg).

Intermediate #1 Casing

Collapse: $DF_c=1.125$

- Full Internal Evacuation: Collapse force equal to the mud gradient in which the casing will be run (0.52 psi/ft). The effects of axial load on collapse will be considered.
- Cementing: Collapse force equal to the gradient of planned cement slurries to planned depths and an internal force equal to mud gradient of displacement fluid (0.43 psi/ft).

Burst: $DF_b=1.125$

- Pressure Test: Casing test per Onshore Oil and Gas Order No. 2 with an external force equal to the mud gradient in which the casing will be run (0.52 psi/ft), which is a more conservative backup force than pore pressure.
- Gas Kick Profile: Internal burst force at the shoe will be Fracture Pressure at that depth. Surface burst pressure will be fracture gradient at setting depth less a gas gradient to equivalent height of 50 bbl kick with Drill Pipe inside casing and mud gradient with which the next hole section will be run above that (0.47 psi/ft). External force will be equal to the mud gradient in which the casing will be run (0.52 psi/ft), which is a more conservative backup force than pore pressure.
- Fracture at Shoe with 1/3 BHP at Surface: Internal burst force at the shoe will be Fracture Pressure at setting depth. Internal burst force at surface will be 1/3 of pore pressure at setting depth. External force will be equal to the mud gradient in which the casing will be run (0.52 psi/ft) which is a more conservative backup force than pore pressure.

Tensile: $DF_t=1.8$

- Overpull: A downward force of 100,000 lbs is applied at the shoe along with the weight of the casing string utilizing the effects of buoyancy (10.0 ppg).

Intermediate #2 Casing

Collapse: $DF_c=1.125$

- Partial Internal Evacuation: Collapse force equal to the mud gradient in which the casing will be run (0.47 psi/ft). The effects of axial load on collapse will be considered. Internal force equal to gas gradient over half of setting depth and mud gradient with which the next hole section will be run below that (0.65 psi/ft).

- Cementing: Collapse force equal to the gradient of planned cement slurries to planned depths and mud gradient in which the casing will be run above that (0.47 psi/ft) and an internal force equal to mud gradient of displacement fluid (0.43 psi/ft).

Burst: $DF_b=1.125$

- Pressure Test: Casing test per Onshore Oil and Gas Order No. 2 with an external force equal to the mud gradient in which the casing will be run (0.47 psi/ft), which is a more conservative backup force than pore pressure.
- Gas Kick Profile: Internal burst force at the shoe will be Fracture Pressure at that depth. Surface burst pressure will be fracture gradient at setting depth less a gas gradient to equivalent height of 100 bbl kick with Drill Pipe inside casing and mud gradient with which the next hole section will be run above that (0.65 psi/ft). External force will be equal to the mud gradient in which the casing will be run (0.47 psi/ft), which is a more conservative backup force than pore pressure.
- Fracture at Shoe with 1/3 BHP at Surface: Internal burst force at the shoe will be Fracture Pressure at setting depth. Internal burst force at surface will be 1/3 of pore pressure at setting depth. External force will be equal to the mud gradient in which the casing will be run (0.47 psi/ft) which is a more conservative backup force than pore pressure.

Tensile: $DF_t=1.8$

- Overpull: A downward force of 100,000 lbs is applied at the shoe along with the weight of the casing string utilizing the effects of buoyancy (9.0 ppg).

Production Casing

Collapse: $DF_c=1.125$

- Full Internal Evacuation: Collapse force equal to the mud gradient in which the casing will be run (0.65 psi/ft). The effects of axial load on collapse will be considered.
- Cementing: Collapse force equal to the gradient of planned cement slurries to planned depths and mud gradient in which the casing will be run above that (0.65 psi/ft) and an internal force equal to mud gradient of displacement fluid (0.43 psi/ft).

Burst: $DF_b=1.125$

- Pressure Test: 8000 psi casing test with an external force equal to the mud gradient in which the casing will be run (0.65 psi/ft), which is a more conservative backup force than pore pressure.
- Injection Down Casing: 9500 psi surface injection pressure plus an internal pressure gradient of 0.65 psi/ft with an external force equal to the mud gradient in which the casing will be run (0.65 psi/ft), which is a more conservative backup force than pore pressure.

Tensile: $DF_t=1.8$

- Overpull: A downward force of 100,000 lbs is applied at the shoe along with the weight of the casing string utilizing the effects of buoyancy (12.5 ppg).

Casing Design Criteria and Load Case Assumptions

Surface Casing

Collapse: $DF_c=1.125$

- Full Internal Evacuation: Collapse force equal to the mud gradient in which the casing will be run (0.43 psi/ft). The effects of axial load on collapse will be considered.
- Cementing: Collapse force equal to the gradient of planned cement slurries to planned depths and an internal force equal to mud gradient of displacement fluid (0.52 psi/ft).

Burst: $DF_b=1.125$

- Pressure Test: Casing test per Onshore Oil and Gas Order No. 2 with an external force equal to the mud gradient in which the casing will be run (0.43 psi/ft), which is a more conservative backup force than pore pressure.

Tensile: $DF_t=1.8$

- Overpull: A downward force of 100,000 lbs is applied at the shoe along with the weight of the casing string utilizing the effects of buoyancy (8.3 ppg).

Intermediate #1 Casing

Collapse: $DF_c=1.125$

- Full Internal Evacuation: Collapse force equal to the mud gradient in which the casing will be run (0.52 psi/ft). The effects of axial load on collapse will be considered.
- Cementing: Collapse force equal to the gradient of planned cement slurries to planned depths and an internal force equal to mud gradient of displacement fluid (0.43 psi/ft).

Burst: $DF_b=1.125$

- Pressure Test: Casing test per Onshore Oil and Gas Order No. 2 with an external force equal to the mud gradient in which the casing will be run (0.52 psi/ft), which is a more conservative backup force than pore pressure.
- Gas Kick Profile: Internal burst force at the shoe will be Fracture Pressure at that depth. Surface burst pressure will be fracture gradient at setting depth less a gas gradient to equivalent height of 50 bbl kick with Drill Pipe inside casing and mud gradient with which the next hole section will be run above that (0.47 psi/ft). External force will be equal to the mud gradient in which the casing will be run (0.52 psi/ft), which is a more conservative backup force than pore pressure.
- Fracture at Shoe with 1/3 BHP at Surface: Internal burst force at the shoe will be Fracture Pressure at setting depth. Internal burst force at surface will be 1/3 of pore pressure at setting depth. External force will be equal to the mud gradient in which the casing will be run (0.52 psi/ft) which is a more conservative backup force than pore pressure.

Tensile: $DF_t=1.8$

- Overpull: A downward force of 100,000 lbs is applied at the shoe along with the weight of the casing string utilizing the effects of buoyancy (10.0 ppg).

Intermediate #2 Casing

Collapse: $DF_c=1.125$

- Partial Internal Evacuation: Collapse force equal to the mud gradient in which the casing will be run (0.47 psi/ft). The effects of axial load on collapse will be considered. Internal force equal to gas gradient over half of setting depth and mud gradient with which the next hole section will be run below that (0.65 psi/ft).

- Cementing: Collapse force equal to the gradient of planned cement slurries to planned depths and mud gradient in which the casing will be run above that (0.47 psi/ft) and an internal force equal to mud gradient of displacement fluid (0.43 psi/ft).

Burst: $DF_b=1.125$

- Pressure Test: Casing test per Onshore Oil and Gas Order No. 2 with an external force equal to the mud gradient in which the casing will be run (0.47 psi/ft), which is a more conservative backup force than pore pressure.
- Gas Kick Profile: Internal burst force at the shoe will be Fracture Pressure at that depth. Surface burst pressure will be fracture gradient at setting depth less a gas gradient to equivalent height of 100 bbl kick with Drill Pipe inside casing and mud gradient with which the next hole section will be run above that (0.65 psi/ft). External force will be equal to the mud gradient in which the casing will be run (0.47 psi/ft), which is a more conservative backup force than pore pressure.
- Fracture at Shoe with 1/3 BHP at Surface: Internal burst force at the shoe will be Fracture Pressure at setting depth. Internal burst force at surface will be 1/3 of pore pressure at setting depth. External force will be equal to the mud gradient in which the casing will be run (0.47 psi/ft) which is a more conservative backup force than pore pressure.

Tensile: $DF_t=1.8$

- Overpull: A downward force of 100,000 lbs is applied at the shoe along with the weight of the casing string utilizing the effects of buoyancy (9.0 ppg).

Production Casing

Collapse: $DF_c=1.125$

- Full Internal Evacuation: Collapse force equal to the mud gradient in which the casing will be run (0.65 psi/ft). The effects of axial load on collapse will be considered.
- Cementing: Collapse force equal to the gradient of planned cement slurries to planned depths and mud gradient in which the casing will be run above that (0.65 psi/ft) and an internal force equal to mud gradient of displacement fluid (0.43 psi/ft).

Burst: $DF_b=1.125$

- Pressure Test: 8000 psi casing test with an external force equal to the mud gradient in which the casing will be run (0.65 psi/ft), which is a more conservative backup force than pore pressure.
- Injection Down Casing: 9500 psi surface injection pressure plus an internal pressure gradient of 0.65 psi/ft with an external force equal to the mud gradient in which the casing will be run (0.65 psi/ft), which is a more conservative backup force than pore pressure.

Tensile: $DF_t=1.8$

- Overpull: A downward force of 100,000 lbs is applied at the shoe along with the weight of the casing string utilizing the effects of buoyancy (12.5 ppg).

Casing Design Criteria and Load Case Assumptions

Surface Casing

Collapse: $DF_c=1.125$

- Full Internal Evacuation: Collapse force equal to the mud gradient in which the casing will be run (0.43 psi/ft). The effects of axial load on collapse will be considered.
- Cementing: Collapse force equal to the gradient of planned cement slurries to planned depths and an internal force equal to mud gradient of displacement fluid (0.52 psi/ft).

Burst: $DF_b=1.125$

- Pressure Test: Casing test per Onshore Oil and Gas Order No. 2 with an external force equal to the mud gradient in which the casing will be run (0.43 psi/ft), which is a more conservative backup force than pore pressure.

Tensile: $DF_t=1.8$

- Overpull: A downward force of 100,000 lbs is applied at the shoe along with the weight of the casing string utilizing the effects of buoyancy (8.3 ppg).

Intermediate #1 Casing

Collapse: $DF_c=1.125$

- Full Internal Evacuation: Collapse force equal to the mud gradient in which the casing will be run (0.52 psi/ft). The effects of axial load on collapse will be considered.
- Cementing: Collapse force equal to the gradient of planned cement slurries to planned depths and an internal force equal to mud gradient of displacement fluid (0.43 psi/ft).

Burst: $DF_b=1.125$

- Pressure Test: Casing test per Onshore Oil and Gas Order No. 2 with an external force equal to the mud gradient in which the casing will be run (0.52 psi/ft), which is a more conservative backup force than pore pressure.
- Gas Kick Profile: Internal burst force at the shoe will be Fracture Pressure at that depth. Surface burst pressure will be fracture gradient at setting depth less a gas gradient to equivalent height of 50 bbl kick with Drill Pipe inside casing and mud gradient with which the next hole section will be run above that (0.47 psi/ft). External force will be equal to the mud gradient in which the casing will be run (0.52 psi/ft), which is a more conservative backup force than pore pressure.
- Fracture at Shoe with 1/3 BHP at Surface: Internal burst force at the shoe will be Fracture Pressure at setting depth. Internal burst force at surface will be 1/3 of pore pressure at setting depth. External force will be equal to the mud gradient in which the casing will be run (0.52 psi/ft) which is a more conservative backup force than pore pressure.

Tensile: $DF_t=1.8$

- Overpull: A downward force of 100,000 lbs is applied at the shoe along with the weight of the casing string utilizing the effects of buoyancy (10.0 ppg).

Intermediate #2 Casing

Collapse: $DF_c=1.125$

- Partial Internal Evacuation: Collapse force equal to the mud gradient in which the casing will be run (0.47 psi/ft). The effects of axial load on collapse will be considered. Internal force equal to gas gradient over half of setting depth and mud gradient with which the next hole section will be run below that (0.65 psi/ft).

- Cementing: Collapse force equal to the gradient of planned cement slurries to planned depths and mud gradient in which the casing will be run above that (0.47 psi/ft) and an internal force equal to mud gradient of displacement fluid (0.43 psi/ft).

Burst: $DF_b=1.125$

- Pressure Test: Casing test per Onshore Oil and Gas Order No. 2 with an external force equal to the mud gradient in which the casing will be run (0.47 psi/ft), which is a more conservative backup force than pore pressure.
- Gas Kick Profile: Internal burst force at the shoe will be Fracture Pressure at that depth. Surface burst pressure will be fracture gradient at setting depth less a gas gradient to equivalent height of 100 bbl kick with Drill Pipe inside casing and mud gradient with which the next hole section will be run above that (0.65 psi/ft). External force will be equal to the mud gradient in which the casing will be run (0.47 psi/ft), which is a more conservative backup force than pore pressure.
- Fracture at Shoe with 1/3 BHP at Surface: Internal burst force at the shoe will be Fracture Pressure at setting depth. Internal burst force at surface will be 1/3 of pore pressure at setting depth. External force will be equal to the mud gradient in which the casing will be run (0.47 psi/ft) which is a more conservative backup force than pore pressure.

Tensile: $DF_t=1.8$

- Overpull: A downward force of 100,000 lbs is applied at the shoe along with the weight of the casing string utilizing the effects of buoyancy (9.0 ppg).

Production Casing

Collapse: $DF_c=1.125$

- Full Internal Evacuation: Collapse force equal to the mud gradient in which the casing will be run (0.65 psi/ft). The effects of axial load on collapse will be considered.
- Cementing: Collapse force equal to the gradient of planned cement slurries to planned depths and mud gradient in which the casing will be run above that (0.65 psi/ft) and an internal force equal to mud gradient of displacement fluid (0.43 psi/ft).

Burst: $DF_b=1.125$

- Pressure Test: 8000 psi casing test with an external force equal to the mud gradient in which the casing will be run (0.65 psi/ft), which is a more conservative backup force than pore pressure.
- Injection Down Casing: 9500 psi surface injection pressure plus an internal pressure gradient of 0.65 psi/ft with an external force equal to the mud gradient in which the casing will be run (0.65 psi/ft), which is a more conservative backup force than pore pressure.

Tensile: $DF_t=1.8$

- Overpull: A downward force of 100,000 lbs is applied at the shoe along with the weight of the casing string utilizing the effects of buoyancy (12.5 ppg).



Matador Production Company

Rustler Breaks

Noel Hensley

Noel Hensely Fed Com #201H

Wellbore #1

Plan: BLM Plan #1

Standard Planning Report

28 March, 2019



Planning Report

Database: EDM 5000.14 Single User Db
Company: Matador Production Company
Project: Rustler Breaks
Site: Noel Hensley
Well: Noel Hensley Fed Com #201H
Wellbore: Wellbore #1
Design: BLM Plan #1

Local Co-ordinate Reference: Well Noel Hensley Fed Com #201H
TVD Reference: KB @ 3127.5usft
MD Reference: KB @ 3127.5usft
North Reference: Grid
Survey Calculation Method: Minimum Curvature

Project	Rustler Breaks		
Map System:	US State Plane 1927 (Exact solution)	System Datum:	Mean Sea Level
Geo Datum:	NAD 1927 (NADCON CONUS)		
Map Zone:	New Mexico East 3001		Using geodetic scale factor

Site	Noel Hensley				
Site Position:		Northing:	440,036.76 usft	Latitude:	32° 12' 34.616 N
From:	Lat/Long	Easting:	562,721.20 usft	Longitude:	104° 7' 49.947 W
Position Uncertainty:	0.0 usft	Slot Radius:	13-3/16 "	Grid Convergence:	0.11 °

Well	Noel Hensely Fed Com #201H					
Well Position	+N/-S	0.0 usft	Northing:	440,036.76 usft	Latitude:	32° 12' 34.616 N
	+E/-W	0.0 usft	Easting:	562,721.20 usft	Longitude:	104° 7' 49.947 W
Position Uncertainty		0.0 usft	Wellhead Elevation:		Ground Level:	3,099.0 usft

Wellbore	Wellbore #1				
Magnetics	Model Name	Sample Date	Declination (°)	Dip Angle (°)	Field Strength (nT)
	IGRF200510	12/31/2009	8.00	60.13	48,723.33844160

Design	BLM Plan #1				
Audit Notes:					
Version:	1	Phase:	PLAN	Tie On Depth:	0.0
Vertical Section:	Depth From (TVD) (usft)	+N/-S (usft)	+E/-W (usft)	Direction (°)	
	0.0	0.0	0.0	179.90	

Plan Survey Tool Program	Date	3/28/2019			
Depth From (usft)	Depth To (usft)	Survey (Wellbore)	Tool Name	Remarks	
1	0.0	14,167.0	BLM Plan #1 (Wellbore #1)	MWD	
				OWSG MWD - Standard	

Plan Sections										
Measured Depth (usft)	Inclination (°)	Azimuth (°)	Vertical Depth (usft)	+N/-S (usft)	+E/-W (usft)	Dogleg Rate (°/100usft)	Build Rate (°/100usft)	Turn Rate (°/100usft)	TFO (°)	Target
0.0	0.00	0.00	0.0	0.0	0.0	0.00	0.00	0.00	0.00	
1,832.7	0.00	0.00	1,832.7	0.0	0.0	0.00	0.00	0.00	0.00	
2,832.7	10.00	280.10	2,827.6	15.3	-85.7	1.00	1.00	0.00	280.10	
8,146.5	10.00	280.10	8,060.7	177.1	-994.1	0.00	0.00	0.00	0.00	
8,813.2	0.00	0.00	8,724.0	187.3	-1,051.3	1.50	-1.50	0.00	180.00	VP - Noel Hensley Fe
9,613.2	80.00	179.89	9,288.3	-286.2	-1,050.4	10.00	10.00	0.00	179.89	
9,779.8	90.00	179.89	9,302.8	-452.0	-1,050.0	6.00	6.00	0.00	0.00	
14,166.9	90.00	179.89	9,302.8	-4,839.1	-1,041.6	0.00	0.00	0.00	0.00	BHL - Noel Hensley F



Planning Report

Database: EDM 5000.14 Single User Db
Company: Matador Production Company
Project: Rustier Breaks
Site: Noel Hensley
Well: Noel Hensley Fed Com #201H
Wellbore: Wellbore #1
Design: BLM Plan #1

Local Co-ordinate Reference: Well Noel Hensley Fed Com #201H
TVD Reference: KB @ 3127.5usft
MD Reference: KB @ 3127.5usft
North Reference: Grid
Survey Calculation Method: Minimum Curvature

Planned Survey

Measured Depth (usft)	Inclination (°)	Azimuth (°)	Vertical Depth (usft)	+N/-S (usft)	+E/-W (usft)	Vertical Section (usft)	Dogleg Rate (°/100usft)	Build Rate (°/100usft)	Turn Rate (°/100usft)
0.0	0.00	0.00	0.0	0.0	0.0	0.0	0.00	0.00	0.00
100.0	0.00	0.00	100.0	0.0	0.0	0.0	0.00	0.00	0.00
200.0	0.00	0.00	200.0	0.0	0.0	0.0	0.00	0.00	0.00
300.0	0.00	0.00	300.0	0.0	0.0	0.0	0.00	0.00	0.00
400.0	0.00	0.00	400.0	0.0	0.0	0.0	0.00	0.00	0.00
500.0	0.00	0.00	500.0	0.0	0.0	0.0	0.00	0.00	0.00
600.0	0.00	0.00	600.0	0.0	0.0	0.0	0.00	0.00	0.00
13 3/8"									
700.0	0.00	0.00	700.0	0.0	0.0	0.0	0.00	0.00	0.00
800.0	0.00	0.00	800.0	0.0	0.0	0.0	0.00	0.00	0.00
900.0	0.00	0.00	900.0	0.0	0.0	0.0	0.00	0.00	0.00
1,000.0	0.00	0.00	1,000.0	0.0	0.0	0.0	0.00	0.00	0.00
1,100.0	0.00	0.00	1,100.0	0.0	0.0	0.0	0.00	0.00	0.00
1,200.0	0.00	0.00	1,200.0	0.0	0.0	0.0	0.00	0.00	0.00
1,300.0	0.00	0.00	1,300.0	0.0	0.0	0.0	0.00	0.00	0.00
1,400.0	0.00	0.00	1,400.0	0.0	0.0	0.0	0.00	0.00	0.00
1,500.0	0.00	0.00	1,500.0	0.0	0.0	0.0	0.00	0.00	0.00
1,600.0	0.00	0.00	1,600.0	0.0	0.0	0.0	0.00	0.00	0.00
1,700.0	0.00	0.00	1,700.0	0.0	0.0	0.0	0.00	0.00	0.00
1,800.0	0.00	0.00	1,800.0	0.0	0.0	0.0	0.00	0.00	0.00
1,832.5	0.00	0.00	1,832.5	0.0	0.0	0.0	0.00	0.00	0.00
Start Build 1.00									
1,832.7	0.00	0.00	1,832.7	0.0	0.0	0.0	0.00	0.00	0.00
1,900.0	0.67	280.10	1,900.0	0.1	-0.4	-0.1	1.00	1.00	0.00
2,000.0	1.67	280.10	2,000.0	0.4	-2.4	-0.4	1.00	1.00	0.00
2,100.0	2.67	280.10	2,099.9	1.1	-6.1	-1.1	1.00	1.00	0.00
2,200.0	3.67	280.10	2,199.7	2.1	-11.6	-2.1	1.00	1.00	0.00
2,300.0	4.67	280.10	2,299.5	3.3	-18.8	-3.4	1.00	1.00	0.00
2,400.0	5.67	280.10	2,399.1	4.9	-27.6	-5.0	1.00	1.00	0.00
2,487.6	6.55	280.10	2,486.1	6.6	-36.8	-6.6	1.00	1.00	0.00
Castile									
2,500.0	6.67	280.10	2,498.5	6.8	-38.2	-6.9	1.00	1.00	0.00
2,501.5	6.69	280.10	2,500.0	6.8	-38.4	-6.9	1.00	1.00	0.00
9 5/8"									
2,600.0	7.67	280.10	2,597.7	9.0	-50.5	-9.1	1.00	1.00	0.00
2,700.0	8.67	280.10	2,696.7	11.5	-64.5	-11.6	1.00	1.00	0.00
2,800.0	9.67	280.10	2,795.4	14.3	-80.2	-14.4	1.00	1.00	0.00
2,832.5	10.00	280.10	2,827.5	15.3	-85.7	-15.4	1.00	1.00	0.00
Start 5314.0 hold at 2832.5 MD									
2,832.7	10.00	280.10	2,827.6	15.3	-85.7	-15.4	1.00	1.00	0.00
2,900.0	10.00	280.10	2,893.9	17.3	-97.2	-17.5	0.00	0.00	0.00
3,000.0	10.00	280.10	2,992.4	20.4	-114.3	-20.6	0.00	0.00	0.00
3,100.0	10.00	280.10	3,090.9	23.4	-131.4	-23.6	0.00	0.00	0.00
3,200.0	10.00	280.10	3,189.4	26.4	-148.5	-26.7	0.00	0.00	0.00
3,300.0	10.00	280.10	3,287.8	29.5	-165.6	-29.8	0.00	0.00	0.00
3,400.0	10.00	280.10	3,386.3	32.5	-182.7	-32.9	0.00	0.00	0.00
3,500.0	10.00	280.10	3,484.8	35.6	-199.8	-35.9	0.00	0.00	0.00
3,600.0	10.00	280.10	3,583.3	38.6	-216.9	-39.0	0.00	0.00	0.00
3,700.0	10.00	280.10	3,681.8	41.7	-234.0	-42.1	0.00	0.00	0.00
3,800.0	10.00	280.10	3,780.2	44.7	-251.1	-45.2	0.00	0.00	0.00
3,900.0	10.00	280.10	3,878.7	47.8	-268.2	-48.2	0.00	0.00	0.00
4,000.0	10.00	280.10	3,977.2	50.8	-285.3	-51.3	0.00	0.00	0.00
4,100.0	10.00	280.10	4,075.7	53.9	-302.4	-54.4	0.00	0.00	0.00



Planning Report

Database: EDM 5000.14 Single User Db
 Company: Matador Production Company
 Project: Rustler Breaks
 Site: Noel Hensley
 Well: Noel Hensley Fed Com #201H
 Wellbore: Wellbore #1
 Design: BLM Plan #1

Local Co-ordinate Reference: Well Noel Hensley Fed Com #201H
 TVD Reference: KB @ 3127.5usft
 MD Reference: KB @ 3127.5usft
 North Reference: Grid
 Survey Calculation Method: Minimum Curvature

Planned Survey

Measured Depth (usft)	Inclination (°)	Azimuth (°)	Vertical Depth (usft)	+N/-S (usft)	+E/-W (usft)	Vertical Section (usft)	Dogleg Rate (°/100usft)	Build Rate (°/100usft)	Turn Rate (°/100usft)
4,200.0	10.00	280.10	4,174.2	56.9	-319.4	-57.5	0.00	0.00	0.00
4,300.0	10.00	280.10	4,272.6	59.9	-336.5	-60.5	0.00	0.00	0.00
4,400.0	10.00	280.10	4,371.1	63.0	-353.6	-63.6	0.00	0.00	0.00
4,500.0	10.00	280.10	4,469.6	66.0	-370.7	-66.7	0.00	0.00	0.00
4,600.0	10.00	280.10	4,568.1	69.1	-387.8	-69.8	0.00	0.00	0.00
4,700.0	10.00	280.10	4,666.6	72.1	-404.9	-72.8	0.00	0.00	0.00
4,800.0	10.00	280.10	4,765.0	75.2	-422.0	-75.9	0.00	0.00	0.00
4,900.0	10.00	280.10	4,863.5	78.2	-439.1	-79.0	0.00	0.00	0.00
5,000.0	10.00	280.10	4,962.0	81.3	-456.2	-82.1	0.00	0.00	0.00
5,100.0	10.00	280.10	5,060.5	84.3	-473.3	-85.1	0.00	0.00	0.00
5,200.0	10.00	280.10	5,159.0	87.4	-490.4	-88.2	0.00	0.00	0.00
5,300.0	10.00	280.10	5,257.4	90.4	-507.5	-91.3	0.00	0.00	0.00
5,400.0	10.00	280.10	5,355.9	93.4	-524.6	-94.4	0.00	0.00	0.00
5,500.0	10.00	280.10	5,454.4	96.5	-541.7	-97.4	0.00	0.00	0.00
5,600.0	10.00	280.10	5,552.9	99.5	-558.8	-100.5	0.00	0.00	0.00
5,700.0	10.00	280.10	5,651.4	102.6	-575.9	-103.6	0.00	0.00	0.00
5,800.0	10.00	280.10	5,749.9	105.6	-593.0	-106.7	0.00	0.00	0.00
5,900.0	10.00	280.10	5,848.3	108.7	-610.1	-109.7	0.00	0.00	0.00
6,000.0	10.00	280.10	5,946.8	111.7	-627.2	-112.8	0.00	0.00	0.00
6,070.7	10.00	280.10	6,016.5	113.9	-639.3	-115.0	0.00	0.00	0.00
Bone Spring Lime									
6,100.0	10.00	280.10	6,045.3	114.8	-644.3	-115.9	0.00	0.00	0.00
6,200.0	10.00	280.10	6,143.8	117.8	-661.4	-119.0	0.00	0.00	0.00
6,300.0	10.00	280.10	6,242.3	120.8	-678.5	-122.0	0.00	0.00	0.00
6,400.0	10.00	280.10	6,340.7	123.9	-695.6	-125.1	0.00	0.00	0.00
6,500.0	10.00	280.10	6,439.2	126.9	-712.7	-128.2	0.00	0.00	0.00
6,600.0	10.00	280.10	6,537.7	130.0	-729.7	-131.3	0.00	0.00	0.00
6,700.0	10.00	280.10	6,636.2	133.0	-746.8	-134.3	0.00	0.00	0.00
6,800.0	10.00	280.10	6,734.7	136.1	-763.9	-137.4	0.00	0.00	0.00
6,900.0	10.00	280.10	6,833.1	139.1	-781.0	-140.5	0.00	0.00	0.00
7,000.0	10.00	280.10	6,931.6	142.2	-798.1	-143.6	0.00	0.00	0.00
7,021.6	10.00	280.10	6,952.9	142.8	-801.8	-144.2	0.00	0.00	0.00
1st Bone Spring Sand									
7,100.0	10.00	280.10	7,030.1	145.2	-815.2	-146.6	0.00	0.00	0.00
7,200.0	10.00	280.10	7,128.6	148.3	-832.3	-149.7	0.00	0.00	0.00
7,293.8	10.00	280.10	7,220.9	151.1	-848.4	-152.6	0.00	0.00	0.00
2nd Bone Spring Carbonate									
7,300.0	10.00	280.10	7,227.1	151.3	-849.4	-152.8	0.00	0.00	0.00
7,400.0	10.00	280.10	7,325.5	154.3	-866.5	-155.9	0.00	0.00	0.00
7,500.0	10.00	280.10	7,424.0	157.4	-883.6	-158.9	0.00	0.00	0.00
7,600.0	10.00	280.10	7,522.5	160.4	-900.7	-162.0	0.00	0.00	0.00
7,700.0	10.00	280.10	7,621.0	163.5	-917.8	-165.1	0.00	0.00	0.00
7,787.4	10.00	280.10	7,707.0	166.1	-932.7	-167.8	0.00	0.00	0.00
2nd Bone Spring Sand									
7,800.0	10.00	280.10	7,719.5	166.5	-934.9	-168.2	0.00	0.00	0.00
7,900.0	10.00	280.10	7,817.9	169.6	-952.0	-171.2	0.00	0.00	0.00
7,996.4	10.00	280.10	7,912.9	172.5	-968.5	-174.2	0.00	0.00	0.00
3rd Bone Spring Carbonate									
8,000.0	10.00	280.10	7,916.4	172.6	-969.1	-174.3	0.00	0.00	0.00
8,100.0	10.00	280.10	8,014.9	175.7	-986.2	-177.4	0.00	0.00	0.00
8,146.5	10.00	280.10	8,060.7	177.1	-994.1	-178.8	0.00	0.00	0.00
Start Drop -1.50									
8,200.0	9.20	280.10	8,113.5	178.6	-1,002.9	-180.4	1.50	-1.50	0.00



Planning Report

Database: EDM 5000.14 Single User Db
 Company: Matador Production Company
 Project: Rustler Breaks
 Site: Noel Hensley
 Well: Noel Hensley Fed Com #201H
 Wellbore: Wellbore #1
 Design: BLM Plan #1

Local Co-ordinate Reference: Well Noel Hensley Fed Com #201H
 TVD Reference: KB @ 3127.5usft
 MD Reference: KB @ 3127.5usft
 North Reference: Grid
 Survey Calculation Method: Minimum Curvature

Planned Survey

Measured Depth (usft)	Inclination (°)	Azimuth (°)	Vertical Depth (usft)	+N/-S (usft)	+E/-W (usft)	Vertical Section (usft)	Dogleg Rate (°/100usft)	Build Rate (°/100usft)	Turn Rate (°/100usft)
8,300.0	7.70	280.10	8,212.4	181.2	-1,017.4	-183.0	1.50	-1.50	0.00
8,400.0	6.20	280.10	8,311.6	183.3	-1,029.3	-185.1	1.50	-1.50	0.00
8,500.0	4.70	280.10	8,411.2	185.0	-1,038.6	-186.8	1.50	-1.50	0.00
8,600.0	3.20	280.10	8,510.9	186.2	-1,045.4	-188.0	1.50	-1.50	0.00
8,700.0	1.70	280.10	8,610.8	187.0	-1,049.6	-188.8	1.50	-1.50	0.00
8,800.0	0.20	280.10	8,710.8	187.3	-1,051.2	-189.1	1.50	-1.50	0.00
8,813.2	0.00	0.00	8,724.0	187.3	-1,051.3	-189.1	1.50	-1.50	606.33
Start Build 10.00 - VP - Noel Hensley Fed Com #201H									
8,850.0	3.68	179.89	8,760.8	186.1	-1,051.3	-187.9	10.00	10.00	488.54
8,900.0	8.68	179.89	8,810.5	180.7	-1,051.3	-182.5	10.00	10.00	0.00
8,950.0	13.68	179.89	8,859.5	171.0	-1,051.2	-172.8	10.00	10.00	0.00
8,969.3	15.61	179.89	8,878.2	166.1	-1,051.2	-167.9	10.00	10.00	0.00
3rd Bone Spring Sand									
9,000.0	18.68	179.89	8,907.5	157.1	-1,051.2	-158.9	10.00	10.00	0.00
9,050.0	23.68	179.89	8,954.1	139.0	-1,051.2	-140.8	10.00	10.00	0.00
9,100.0	28.68	179.89	8,999.0	117.0	-1,051.1	-118.8	10.00	10.00	0.00
9,150.0	33.68	179.89	9,041.8	91.1	-1,051.1	-92.9	10.00	10.00	0.00
9,200.0	38.68	179.89	9,082.1	61.6	-1,051.0	-63.4	10.00	10.00	0.00
9,250.0	43.68	179.89	9,119.7	28.6	-1,051.0	-30.5	10.00	10.00	0.00
9,300.0	48.68	179.89	9,154.3	-7.4	-1,050.9	5.6	10.00	10.00	0.00
9,350.0	53.68	179.89	9,185.7	-46.4	-1,050.8	44.5	10.00	10.00	0.00
9,400.0	58.68	179.89	9,213.5	-87.9	-1,050.7	86.1	10.00	10.00	0.00
9,450.0	63.68	179.89	9,237.6	-131.7	-1,050.7	129.8	10.00	10.00	0.00
9,456.0	64.28	179.89	9,240.2	-137.1	-1,050.6	135.3	10.00	10.00	0.00
Wolfcamp A									
9,500.0	68.68	179.89	9,257.8	-177.4	-1,050.6	175.6	10.00	10.00	0.00
9,550.0	73.68	179.89	9,273.9	-224.7	-1,050.5	222.9	10.00	10.00	0.00
9,600.0	78.68	179.89	9,285.8	-273.3	-1,050.4	271.4	10.00	10.00	0.00
9,613.2	80.00	179.89	9,288.3	-286.2	-1,050.4	284.4	10.00	10.00	0.00
Start Build 6.00									
9,618.0	80.29	179.89	9,289.1	-291.0	-1,050.3	289.1	6.00	6.00	0.00
7 5/8" Int 2									
9,650.0	82.21	179.89	9,293.9	-322.6	-1,050.3	320.8	6.00	6.00	0.00
9,700.0	85.21	179.89	9,299.4	-372.3	-1,050.2	370.4	6.00	6.00	0.00
9,750.0	88.21	179.89	9,302.3	-422.2	-1,050.1	420.4	6.00	6.00	0.00
9,779.8	90.00	179.89	9,302.8	-452.0	-1,050.0	450.2	6.00	6.00	0.00
Start 4387.6 hold at 9779.8 MD									
9,800.0	90.00	179.89	9,302.8	-472.2	-1,050.0	470.4	0.00	0.00	0.00
9,900.0	90.00	179.89	9,302.8	-572.2	-1,049.8	570.4	0.00	0.00	0.00
10,000.0	90.00	179.89	9,302.8	-672.2	-1,049.6	670.4	0.00	0.00	0.00
10,100.0	90.00	179.89	9,302.8	-772.2	-1,049.4	770.4	0.00	0.00	0.00
10,200.0	90.00	179.89	9,302.8	-872.2	-1,049.2	870.4	0.00	0.00	0.00
10,300.0	90.00	179.89	9,302.8	-972.2	-1,049.0	970.4	0.00	0.00	0.00
10,400.0	90.00	179.89	9,302.8	-1,072.2	-1,048.8	1,070.4	0.00	0.00	0.00
10,500.0	90.00	179.89	9,302.8	-1,172.2	-1,048.7	1,170.4	0.00	0.00	0.00
10,600.0	90.00	179.89	9,302.8	-1,272.2	-1,048.5	1,270.4	0.00	0.00	0.00
10,700.0	90.00	179.89	9,302.8	-1,372.2	-1,048.3	1,370.4	0.00	0.00	0.00
10,800.0	90.00	179.89	9,302.8	-1,472.2	-1,048.1	1,470.4	0.00	0.00	0.00
10,900.0	90.00	179.89	9,302.8	-1,572.2	-1,047.9	1,570.4	0.00	0.00	0.00
11,000.0	90.00	179.89	9,302.8	-1,672.2	-1,047.7	1,670.4	0.00	0.00	0.00
11,100.0	90.00	179.89	9,302.8	-1,772.2	-1,047.5	1,770.4	0.00	0.00	0.00
11,200.0	90.00	179.89	9,302.8	-1,872.2	-1,047.3	1,870.4	0.00	0.00	0.00
11,300.0	90.00	179.89	9,302.8	-1,972.2	-1,047.1	1,970.4	0.00	0.00	0.00



Planning Report

Database: EDM 5000.14 Single User Db
Company: Matador Production Company
Project: Rustler Breaks
Site: Noel Hensley
Well: Noel Hensley Fed Com #201H
Wellbore: Wellbore #1
Design: BLM Plan #1

Local Co-ordinate Reference: Well Noel Hensley Fed Com #201H
TVD Reference: KB @ 3127.5usft
MD Reference: KB @ 3127.5usft
North Reference: Grid
Survey Calculation Method: Minimum Curvature

Planned Survey

Measured Depth (usft)	Inclination (°)	Azimuth (°)	Vertical Depth (usft)	+N/-S (usft)	+E/-W (usft)	Vertical Section (usft)	Dogleg Rate (°/100usft)	Build Rate (°/100usft)	Turn Rate (°/100usft)
11,400.0	90.00	179.89	9,302.8	-2,072.2	-1,046.9	2,070.4	0.00	0.00	0.00
11,500.0	90.00	179.89	9,302.8	-2,172.2	-1,046.7	2,170.4	0.00	0.00	0.00
11,600.0	90.00	179.89	9,302.8	-2,272.2	-1,046.5	2,270.4	0.00	0.00	0.00
11,700.0	90.00	179.89	9,302.8	-2,372.2	-1,046.4	2,370.4	0.00	0.00	0.00
11,800.0	90.00	179.89	9,302.8	-2,472.2	-1,046.2	2,470.4	0.00	0.00	0.00
11,900.0	90.00	179.89	9,302.8	-2,572.2	-1,046.0	2,570.4	0.00	0.00	0.00
12,000.0	90.00	179.89	9,302.8	-2,672.2	-1,045.8	2,670.4	0.00	0.00	0.00
12,100.0	90.00	179.89	9,302.8	-2,772.2	-1,045.6	2,770.4	0.00	0.00	0.00
12,200.0	90.00	179.89	9,302.8	-2,872.2	-1,045.4	2,870.4	0.00	0.00	0.00
12,300.0	90.00	179.89	9,302.8	-2,972.2	-1,045.2	2,970.4	0.00	0.00	0.00
12,400.0	90.00	179.89	9,302.8	-3,072.2	-1,045.0	3,070.4	0.00	0.00	0.00
12,500.0	90.00	179.89	9,302.8	-3,172.2	-1,044.8	3,170.4	0.00	0.00	0.00
12,600.0	90.00	179.89	9,302.8	-3,272.2	-1,044.6	3,270.4	0.00	0.00	0.00
12,700.0	90.00	179.89	9,302.8	-3,372.2	-1,044.4	3,370.4	0.00	0.00	0.00
12,800.0	90.00	179.89	9,302.8	-3,472.2	-1,044.2	3,470.4	0.00	0.00	0.00
12,900.0	90.00	179.89	9,302.8	-3,572.2	-1,044.0	3,570.4	0.00	0.00	0.00
13,000.0	90.00	179.89	9,302.8	-3,672.2	-1,043.9	3,670.4	0.00	0.00	0.00
13,100.0	90.00	179.89	9,302.8	-3,772.2	-1,043.7	3,770.4	0.00	0.00	0.00
13,200.0	90.00	179.89	9,302.8	-3,872.2	-1,043.5	3,870.4	0.00	0.00	0.00
13,300.0	90.00	179.89	9,302.8	-3,972.2	-1,043.3	3,970.4	0.00	0.00	0.00
13,400.0	90.00	179.89	9,302.8	-4,072.2	-1,043.1	4,070.4	0.00	0.00	0.00
13,500.0	90.00	179.89	9,302.8	-4,172.2	-1,042.9	4,170.4	0.00	0.00	0.00
13,600.0	90.00	179.89	9,302.8	-4,272.2	-1,042.7	4,270.4	0.00	0.00	0.00
13,700.0	90.00	179.89	9,302.8	-4,372.2	-1,042.5	4,370.4	0.00	0.00	0.00
13,800.0	90.00	179.89	9,302.8	-4,472.2	-1,042.3	4,470.4	0.00	0.00	0.00
13,900.0	90.00	179.89	9,302.8	-4,572.2	-1,042.1	4,570.4	0.00	0.00	0.00
14,000.0	90.00	179.89	9,302.8	-4,672.2	-1,041.9	4,670.4	0.00	0.00	0.00
14,100.0	90.00	179.89	9,302.8	-4,772.2	-1,041.7	4,770.4	0.00	0.00	0.00
14,166.9	90.00	179.89	9,302.8	-4,839.1	-1,041.6	4,837.3	0.00	0.00	0.00

BHL - Noel Hensley Fed Com #201H

Design Targets

Target Name

- hit/miss target - Shape	Dip Angle (°)	Dip Dir. (°)	TVD (usft)	+N/-S (usft)	+E/-W (usft)	Northing (usft)	Easting (usft)	Latitude	Longitude
VP - Noel Hensley Fed C - plan hits target center - Point	0.00	0.00	8,724.0	187.3	-1,051.3	440,224.00	561,670.00	32° 12' 36.488 N	104° 8' 2.179 W
BHL - Noel Hensley Fed - plan misses target center by 0.9usft at 14166.9usft MD (9302.8 TVD, -4839.1 N, -1041.6 E) - Point	0.00	0.00	9,302.0	-4,839.1	-1,042.1	435,197.61	561,679.09	32° 11' 46.745 N	104° 8' 2.181 W



Planning Report

Database: EDM 5000.14 Single User Db
Company: Matador Production Company
Project: Rustler Breaks
Site: Noel Hensley
Well: Noel Hensley Fed Com #201H
Wellbore: Wellbore #1
Design: BLM Plan #1

Local Co-ordinate Reference: Well Noel Hensley Fed Com #201H
TVD Reference: KB @ 3127.5usft
MD Reference: KB @ 3127.5usft
North Reference: Grid
Survey Calculation Method: Minimum Curvature

Casing Points

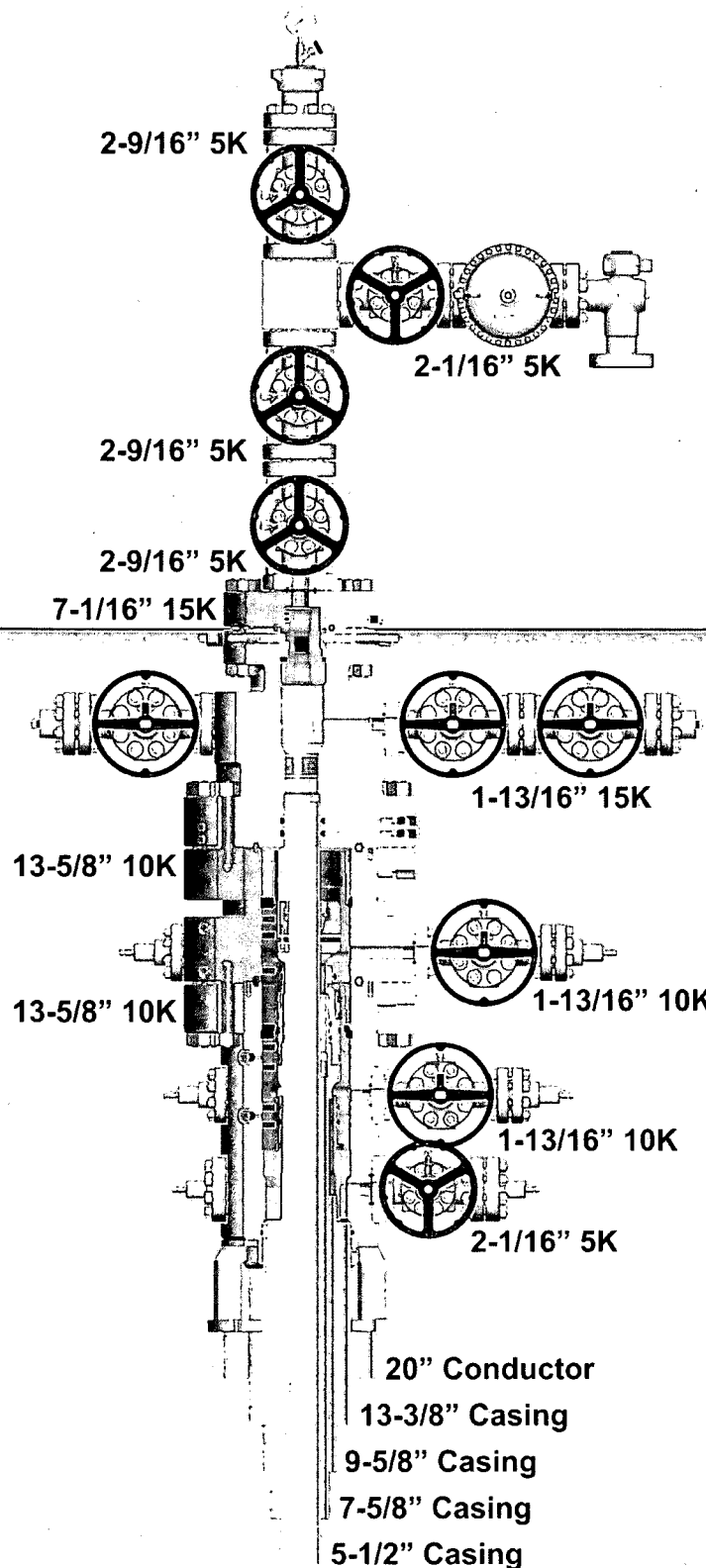
Measured Depth (usft)	Vertical Depth (usft)	Name	Casing Diameter (")	Hole Diameter (")
600.0	600.0	13 3/8"	13-3/8	17-1/2
2,501.5	2,500.0	9 5/8"	9-5/8	12-1/4
9,618.0	9,289.1	7 5/8" Int 2	7-5/8	8-3/4
14,167.4	9,302.8	5 1/2" Prod Slim	5-1/2	6-3/4

Formations

Measured Depth (usft)	Vertical Depth (usft)	Name	Lithology	Dip (°)	Dip Direction (°)
2,487.6	2,486.1	Castile			
6,070.7	6,016.5	Bone Spring Lime			
7,021.6	6,952.9	1st Bone Spring Sand			
7,293.8	7,220.9	2nd Bone Spring Carbonate			
7,787.4	7,707.0	2nd Bone Spring Sand			
7,996.4	7,912.9	3rd Bone Spring Carbonate			
8,969.3	8,878.2	3rd Bone Spring Sand			
9,456.0	9,240.2	Wolfcamp A			

Plan Annotations

Measured Depth (usft)	Vertical Depth (usft)	Local Coordinates		Comment
		+N/-S (usft)	+E/-W (usft)	
1,832.5	1,832.5	0.0	0.0	Start Build 1.00
2,832.5	2,827.5	15.3	-85.7	Start 5314.0 hold at 2832.5 MD
8,146.5	8,060.7	177.1	-994.1	Start Drop -1.50
8,813.2	8,724.0	187.3	-1,051.3	Start Build 10.00
9,613.2	9,288.3	-286.2	-1,050.4	Start Build 6.00
9,779.8	9,302.8	-452.0	-1,050.0	Start 4387.6 hold at 9779.8 MD
14,167.4				TD at 14167.4



Variance Request

Matador requests a variance to run 7-5/8" BTC casing inside 9-5/8" BTC casing which will be less than the 0.422" stand off regulation. Matador has met with Christopher Walls and Mustafa Haque as well as other BLM representatives and determined that this would be acceptable as long as the 7-5/8" flush casing was run throughout the entire 300' cement tie back section between 9-5/8" and 7-5/8" casing.

Noel Hensley Fed Com #201H
 SHL: 250' FNL & 1381' FWL Section 19
 BHL: 240' FSL & 330' FWL Section 19
 Township/Range: 24S 28E
 Elevation Above Sea Level: 3099'

Drilling Operation Plan

Proposed Drilling Depth: 14166' MD / 9302' TVD

Type of well: Horizontal well, no pilot hole

Permitted Well Type: Gas

Geologic Name of Surface Formation Quaternary Deposits

KOP Lat/Long (NAD83): 32.2102574122 N / -104.1344351281 W
 TD Lat/Long (NAD83): 32.1964400161 N / -104.1339395759 W

1. Estimated Tops

Formation	MD (ft)	TVD (ft)	Thickness (ft)	Lithology	Resource
Top of Salt	800	800	206	Salt	Barren
Castile	1,006	1,006	1,431	Salt	Barren
Lamar (Base of Salt)	2,437	2,437	99	Limestone/Dolomite	Barren
Bell Canyon	2,536	2,536	750	Sandstone	Oil/Natural Gas
Cherry Canyon	3,286	3,286	1,200	Sandstone	Oil/Natural Gas
Brushy Canyon	4,486	4,486	1,530	Sandstone	Oil/Natural Gas
Bone Spring Lime	6,016	6,016	937	Limestone	Oil/Natural Gas
1st Bone Spring Sand	6,953	6,953	268	Sandstone	Oil/Natural Gas
2nd Bone Spring Carbonate	7,221	7,221	486	Carbonate	Oil/Natural Gas
2nd Bone Spring Sand	7,707	7,707	206	Sandstone	Oil/Natural Gas
3rd Bone Spring Carbonate	7,913	7,913	811	Carbonate	Oil/Natural Gas
KOP	8,813	8,724			Oil/Natural Gas
3rd Bone Spring Sand	9,000	8,878	362	Sandstone	Oil/Natural Gas
Wolfcamp	9,500	9,240		Shale	Oil/Natural Gas
TD	14,166	9,302		Shale	Oil/Natural Gas

2. Notable Zones

Wolfcamp is the goal. All perforations will be within the setback requirements as prescribed or permitted by the New Mexico Oil Conservation Division. OSE estimated ground water depth at this location is 41'

3. Pressure Control

Equipment

A 12,000' 5000-psi BOP stack consisting of 3 rams with 2 pipe rams, 1 blind ram, and one annular preventer will be utilized below surface casing to TD. See attachments for BOP and choke manifold diagrams.

An accumulator complying with Onshore Order #2 requirements for the pressure rating of the BOP stack will be present. A rotating head will also be installed as needed.

Testing Procedure

BOP will be inspected and operated as required in Onshore Order #2. Kelly cock and sub equipped with a full opening valve sized to fit the drill pipe and collars will be available on the rig floor in the open position.

A third party company will test the BOPs.

After setting surface casing, a minimum 5M BOPE system will be installed. Test pressures will be 250 psi low and 5000 psi high with the annular being tested to 250 psi low and 2500 psi high before drilling below surface shoe. In the event that the rig drills multiple wells on the pad and any seal subject to test pressures are broken, a full BOP test will be performed when the rig returns and the 5M BOPE system is re-installed.

Variance Request

Matador requests a variance to have the option of running a speed head for setting the Intermediate 1, Intermediate 2, and Production Strings. The BOPs will not be tested again unless any flanges are separated.

Matador requests a variance to drill this well using a co-flex line between the BOP and choke manifold. Certification for proposed co-flex hose is attached. The hose is not required by the manufacturer to be anchored. If the specific hose is not available, then one of equal or higher rating will be used.

Matador requests a variance to have the option of batch drilling this well with other wells on the same pad. In the event that this well is batch drilled, the wellbore will be secured with a blind flange of like pressure. When the rig returns to this well and BOPs are installed, the operator will perform a full BOP test.

4. Casing & Cement

All casing will be API and new. See attached casing assumption worksheet.

String	Hole Size (in)	Set MD (ft)	Set TVD (ft)	Casing Size.(in)	Wt. (lb/ft)	Grade	Joint	Collapse	Burst	Tension
Surface	17.5	0 - 400	0 - 400	13.375	54.5	J-55	BUTT	1.125	1.125	1.8
Intermediate 1	12.25	0 - 2487	0 - 2487	9.625	40	J-55	BUTT	1.125	1.125	1.8
Intermediate 2 Top	8.75	0 - 2187	0 - 2187	7.625	29.7	P-110	BUTT	1.125	1.125	1.8
Intermediate 2 Bottom	8.75	2187 - 9618	2187 - 9289	7.625	29.7	P-110	VAM HTF-NR	1.125	1.125	1.8
Production Top	6.75	0 - 9518	0 - 9263	5.5	20	P-110	DWC/C-IS MS	1.125	1.125	1.8
Production Bottom	6.75	9518 - 14166	9263 - 9302	4.5	13.5	P-110	DWC/C-IS HT	1.125	1.125	1.8

- All casing strings will be tested in accordance with Onshore Order #2 - III.B.1.h

- Rustler top will be validated via drilling parameters (i.e. reduction in ROP) and surface casing setting depth revised accordingly if needed

Variance Request

Matador requests a variance to run 7-5/8" BTC casing inside 9-5/8" BTC casing which will be less than the 0.422" stand off regulation. Matador has met with Christopher Walls and Mustafa Haque as well as other BLM representatives and determined that this would be acceptable as long as the 7-5/8" flush casing was run throughout the entire 300' cement tie back section between 9-5/8" and 7-5/8" casing.

String	Type	Sacks	Yield	Cu. Ft.	Weight	Percent Excess	Top of Cement	Class	Blend
--------	------	-------	-------	---------	--------	----------------	---------------	-------	-------

Surface	Lead	100	1.72	176	12.5	50%	0	C	5% NaCl + LCM
	Tail	250	1.38	347	14.8	50%	100	C	5% NaCl + LCM
Intermediate 1	Lead	450	2.13	964	12.6	50%	0	C	Bentonite + 1% CaCL2 + 8% NaCl + LCM
	Tail	190	1.38	268	14.8	50%	1990	C	5% NaCl + LCM
Intermediate 2	Lead	410	2.13	872	11.0	35%	2187	TXI	Fluid Loss + Dispersant + Retarder + LCM
	Tail	110	1.46	156	13.2	35%	8618	TXI	Fluid Loss + Dispersant + Retarder + LCM
Production	Tail	640	1.17	754	14.5	10%	9118	H	Fluid Loss + Dispersant + Retarder + LCM

5. Mud Program

An electronic Pason mud monitoring system complying with Onshore Order 2 will be used. All necessary mud products (barite, bentonite, LCM) for weight addition and fluid loss control will be on location at all times. Mud program is subject to change due to hole conditions.

Hole Section	Hole Size (in)	Mud Type	Interval MD (ft)	Density (lb/gal)	Viscosity	Fluid Loss
Surface	17.5	Spud Mud	0 - 400	8.4 - 8.8	28-30	NC
Intermediate 1	12.25	Brine Water	400 - 2487	9.5 - 10.2	28-30	NC
Intermediate 2	8.75	FW/Cut Brine	2487 - 9618	8.4 - 9.4	28-30	NC
Production	6.75	OBM	9618 - 14166	11.5 - 12.5	30-35	<20

6. Cores, Test, & Logs

No core or drill stem test is planned.

A 2-person mud logging program will be used from Intermediate 2 Casing shoe to TD.

No electric logs are planned at this time. GR will be collected through the MWD tools from Intermediate casing to TD. CBL with CCL will be run as far as gravity will let it fall to top of curve.

7. Down Hole Conditions

No abnormal pressure or temperature is expected. Maximum anticipated surface pressure is 4000 psi. Expected bottom hole temperature is 155 F.

In accordance with Onshore Order 6, Matador does not anticipate that there will be enough H2S from the surface to the Bone Spring formations to meet the BLM's minimum requirements for the submission of an "H2S Drilling Operation Plan" or "Public Protection Plan" for the drilling and completion of this well. Since we have an H2S safety package on all wells, attached is an "H2S Drilling Operations Plan". Adequate flare lines will be installed off the mud/gas separator where gas may be flared safely. All personnel will be familiar with all aspects of safe operation of equipment being used.



U.S. Department of the Interior
BUREAU OF LAND MANAGEMENT

SUPO Data Report

12/09/2019

APD ID: 10400040093

Submission Date: 04/05/2019

Highlighted data
reflects the most
recent changes

Operator Name: MATADOR PRODUCTION COMPANY

Well Name: NOEL HENSLEY FED COM

Well Number: 201H

[Show Final Text](#)

Well Type: CONVENTIONAL GAS WELL

Well Work Type: Drill

Section 1 - Existing Roads

Will existing roads be used? NO

Section 2 - New or Reconstructed Access Roads

Will new roads be needed? YES

New Road Map:

EP_NOEL_HENSLEY_RD_REV1_S_20190328163441.pdf

New road type: LOCAL

Length: 912.38 Feet **Width (ft.):** 30

Max slope (%): 0 **Max grade (%):** 4

Army Corp of Engineers (ACOE) permit required? NO

ACOE Permit Number(s):

New road travel width: 20

New road access erosion control: Detour barrow ditch will be frequently re-ripped to slow discharge

New road access plan or profile prepared? NO

New road access plan attachment:

Access road engineering design? NO

Access road engineering design attachment:

Turnout? N

Access surfacing type: OTHER

Access topsoil source: ONSITE

Access surfacing type description: Caliche from the nearest commercial source

Operator Name: MATADOR PRODUCTION COMPANY

Well Name: NOEL HENSLEY FED COM

Well Number: 201H

Access onsite topsoil source depth: 6

Offsite topsoil source description:

Onsite topsoil removal process: Grading

Access other construction information:

Access miscellaneous information:

Number of access turnouts:

Access turnout map:

Drainage Control

New road drainage crossing: OTHER

Drainage Control comments: None

Road Drainage Control Structures (DCS) description: None needed

Road Drainage Control Structures (DCS) attachment:

Access Additional Attachments

Section 3 - Location of Existing Wells

Existing Wells Map? YES

Attach Well map:

NoelHensley201OneMileRadius_OCDPlat_20190401154729.pdf

Section 4 - Location of Existing and/or Proposed Production Facilities

Submit or defer a Proposed Production Facilities plan? SUBMIT

Production Facilities description:

Production Facilities map:

CD_NOEL_HENSLEY_W2_FACILITY_SITE_REV1_S_20190401101513.pdf

BO_NOEL_HENSLEY_W2_FACILITY_SITE_REV1_S_20190401101524.pdf

Noel_Hensley_Production_Facility_Layout_20190405123355.pptx

Section 5 - Location and Types of Water Supply

Water Source Table

Operator Name: MATADOR PRODUCTION COMPANY

Well Name: NOEL HENSLEY FED COM

Well Number: 201H

Water source type: GW WELL

Water source use type: STIMULATION
INTERMEDIATE/PRODUCTION
CASING

Source latitude: 32.222584

Source longitude: -104.1452

Source datum: NAD83

Water source permit type: WATER WELL

Water source transport method: PIPELINE

Source land ownership: PRIVATE

Source transportation land ownership: PRIVATE

Water source volume (barrels): 400000

Source volume (acre-feet): 51.55724

Source volume (gal): 16800000

Water source and transportation map:

Noel_Hensley_Water_Source_20190328170433.pdf

Noel_Hensley_Water_Source_20190826123746.pdf

Water source comments: Water source is located in the SENE Section 13 Township 24S Range 27E or a legally authorized water source.

New water well? NO

New Water Well Info

Well latitude:

Well Longitude:

Well datum:

Well target aquifer:

Est. depth to top of aquifer(ft):

Est thickness of aquifer:

Aquifer comments:

Aquifer documentation:

Well depth (ft):

Well casing type:

Well casing outside diameter (in.):

Well casing inside diameter (in.):

New water well casing?

Used casing source:

Drilling method:

Drill material:

Grout material:

Grout depth:

Casing length (ft.):

Casing top depth (ft.):

Well Production type:

Completion Method:

Operator Name: MATADOR PRODUCTION COMPANY

Well Name: NOEL HENSLEY FED COM

Well Number: 201H

Water well additional information:

State appropriation permit:

Additional information attachment:

Section 6 - Construction Materials

Using any construction materials: YES

Construction Materials description: Caliche from a pit on fee surface located in the SWSE of Section 13 T24S-R27E less than one mile away or a legally certified pit within 5 miles.

Construction Materials source location attachment:

Noel_Hensley_Caliche_20190826151418.pdf

Section 7 - Methods for Handling Waste

Waste type: DRILLING

Waste content description: Cuttings, mud, water and brine water

Amount of waste: 2000 barrels

Waste disposal frequency : Daily

Safe containment description: Steel roll off bins

Safe containmant attachment:

Waste disposal type: HAUL TO COMMERCIAL FACILITY **Disposal location ownership:** PRIVATE

Disposal type description:

Disposal location description: Halfway NM

Waste type: GARBAGE

Waste content description: Solid waste from the drilling workers

Amount of waste: 50 pounds

Waste disposal frequency : Weekly

Safe containment description: Trash trailer

Safe containmant attachment:

Waste disposal type: HAUL TO COMMERCIAL FACILITY **Disposal location ownership:** OTHER

Disposal type description:

Disposal location description: Eddy County landfill

Reserve Pit

Reserve Pit being used? NO

Temporary disposal of produced water into reserve pit?

Operator Name: MATADOR PRODUCTION COMPANY

Well Name: NOEL HENSLEY FED COM

Well Number: 201H

Reserve pit length (ft.)

Reserve pit width (ft.)

Reserve pit depth (ft.)

Reserve pit volume (cu. yd.)

Is at least 50% of the reserve pit in cut?

Reserve pit liner

Reserve pit liner specifications and installation description

Cuttings Area

Cuttings Area being used? NO

Are you storing cuttings on location? NO

Description of cuttings location

Cuttings area length (ft.)

Cuttings area width (ft.)

Cuttings area depth (ft.)

Cuttings area volume (cu. yd.)

Is at least 50% of the cuttings area in cut?

WCuttings area liner

Cuttings area liner specifications and installation description

Section 8 - Ancillary Facilities

Are you requesting any Ancillary Facilities?: NO

Ancillary Facilities attachment:

Comments:

Section 9 - Well Site Layout

Well Site Layout Diagram:

Noel_Hensley_Fed_Com__201H_Location_Layout_20190401101433.pdf

Noel_Hensley_Reclamation_20190826123638.pdf

Comments: