

RECEIVED

DEC 12 2019

FORM APPROVED
OMB No. 1004-0137
Expires: January 31, 2018

UNITED STATES
DEPARTMENT OF THE INTERIOR
BUREAU OF LAND MANAGEMENT
DISTRICT 7 - ARTESIA O.C.D.

APPLICATION FOR PERMIT TO DRILL OR REENTER

1a. Type of work: <input checked="" type="checkbox"/> DRILL <input type="checkbox"/> REENTER		5. Lease Serial No. NMNM0025533
1b. Type of Well: <input type="checkbox"/> Oil Well <input checked="" type="checkbox"/> Gas Well <input type="checkbox"/> Other		6. If Indian, Allottee or Tribe Name
1c. Type of Completion: <input type="checkbox"/> Hydraulic Fracturing <input checked="" type="checkbox"/> Single Zone <input type="checkbox"/> Multiple Zone		7. If Unit or CA Agreement, Name and No. POKER LAKE / NMNM071016X
2. Name of Operator XTO PERMIAN OPERATING LLC		8. Lease Name and Well No. POKER LAKE UNIT 18 TWR 153H 326260
3a. Address 6401 Holiday Hill Road, Bldg 5 Midland TX 79707	3b. Phone No. (include area code) (432)682-8873	9. API Well No. 30-015-46532
4. Location of Well (Report location clearly and in accordance with any State requirements. *) At surface NENW / 613 FNL / 2420 FWL / LAT 32.208383 / LONG -103.817855 At proposed prod. zone SESW / 200 FSL / 1590 FWL / LAT 32.181567 / LONG -103.820564		10. Field and Pool, or Exploratory PURPLE SAGE WOLFCAMP GAS
14. Distance in miles and direction from nearest town or post office*		11. Sec., T. R. M. or Blk. and Survey or Area SEC 19 / T24S / R31E / NMP
15. Distance from proposed* location to nearest property or lease line, ft. (Also to nearest drig. unit line, if any) 330 feet		12. County or Parish EDDY
16. No of acres in lease 324.37		13. State NM
17. Spacing Unit dedicated to this well 640		
18. Distance from proposed location* to nearest well, drilling, completed, applied for, on this lease, ft. 35 feet		20. BLM/BIA Bond No. in file FED: COB000050
21. Elevations (Show whether DF, KDB, RT, GL, etc.) 3496 feet	22. Approximate date work will start* 11/01/2019	23. Estimated duration 60 days
24. Attachments		

The following, completed in accordance with the requirements of Onshore Oil and Gas Order No. 1, and the Hydraulic Fracturing rule per 43 CFR 3162.3-3 (as applicable)

- | | |
|--|---|
| 1. Well plat certified by a registered surveyor. | 4. Bond to cover the operations unless covered by an existing bond on file (see Item 20 above). |
| 2. A Drilling Plan. | 5. Operator certification. |
| 3. A Surface Use Plan (if the location is on National Forest System Lands, the SUPO must be filed with the appropriate Forest Service Office). | 6. Such other site specific information and/or plans as may be requested by the BLM. |

25. Signature (Electronic Submission)	Name (Printed/Typed) Kelly Kardos / Ph: (432)620-4374	Date 06/03/2019
Title Regulatory Coordinator		
Approved by (Signature) (Electronic Submission)	Name (Printed/Typed) Cody Layton / Ph: (575)234-5959	Date 10/24/2019
Title Assistant Field Manager Lands & Minerals Office CARLSBAD		

Application approval does not warrant or certify that the applicant holds legal or equitable title to those rights in the subject lease which would entitle the applicant to conduct operations thereon.

Conditions of approval, if any, are attached.

Title 18 U.S.C. Section 1001 and Title 43 U.S.C. Section 1212, make it a crime for any person knowingly and willfully to make to any department or agency of the United States any false, fictitious or fraudulent statements or representations as to any matter within its jurisdiction.

APPROVED WITH CONDITIONS
Approval Date: 10/24/2019

RWP 12-24-19

INSTRUCTIONS

GENERAL: This form is designed for submitting proposals to perform certain well operations, as indicated on Federal and Indian lands and leases for action by appropriate Federal agencies, pursuant to applicable Federal laws and regulations. Any necessary special instructions concerning the use of this form and the number of copies to be submitted, particularly with regard to local, area, or regional procedures and practices, either are shown below or will be issued by, or may be obtained from local Federal offices.

ITEM 1: If the proposal is to redrill to the same reservoir at a different subsurface location or to a new reservoir, use this form with appropriate notations. Consult applicable Federal regulations concerning subsequent work proposals or reports on the well.

ITEM 4: Locations on Federal or Indian land should be described in accordance with Federal requirements. Consult local Federal offices for specific instructions.

ITEM 14: Needed only when location of well cannot readily be found by road from the land or lease description. A plat, or plats, separate or on the reverse side, showing the roads to, and the surveyed location of, the well, and any other required information, should be furnished when required by Federal agency offices.

ITEMS 15 AND 18: If well is to be, or has been directionally drilled, give distances for subsurface location of hole in any present or objective productive zone.

ITEM 22: Consult applicable Federal regulations, or appropriate officials, concerning approval of the proposal before operations are started.

ITEM 24: If the proposal will involve hydraulic fracturing operations, you must comply with 43 CFR 3162.3-3, including providing information about the protection of usable water. Operators should provide the best available information about all formations containing water and their depths. This information could include data and interpretation of resistivity logs run on nearby wells. Information may also be obtained from state or tribal regulatory agencies and from local BLM offices.

NOTICES

The Privacy Act of 1974 and regulation in 43 CFR 2.48(d) provide that you be furnished the following information in connection with information required by this application.

AUTHORITY: 30 U.S.C. 181 et seq., 25 U.S.C. 396; 43 CFR 3160

PRINCIPAL PURPOSES: The information will be used to: (1) process and evaluate your application for a permit to drill a new oil, gas, or service well or to reenter a plugged and abandoned well; and (2) document, for administrative use, information for the management, disposal and use of National Resource Lands and resources including (a) analyzing your proposal to discover and extract the Federal or Indian resources encountered; (b) reviewing procedures and equipment and the projected impact on the land involved; and (c) evaluating the effects of the proposed operation on the surface and subsurface water and other environmental impacts.

ROUTINE USE: Information from the record and/or the record will be transferred to appropriate Federal, State, and local or foreign agencies, when relevant to civil, criminal or regulatory investigations or prosecution, in connection with congressional inquiries and for regulatory responsibilities.

EFFECT OF NOT PROVIDING INFORMATION: Filing of this application and disclosure of the information is mandatory only if you elect to initiate a drilling or reentry operation on an oil and gas lease.

The Paperwork Reduction Act of 1995 requires us to inform you that:

The BLM connects this information to an evaluation of the technical, safety, and environmental factors involved with drilling for oil and/or gas on Federal and Indian oil and gas leases. This information will be used to analyze and approve applications. Response to this request is mandatory only if the operator elects to initiate drilling or reentry operations on an oil and gas lease. The BLM would like you to know that you do not have to respond to this or any other Federal agency-sponsored information collection unless it displays a currently valid OMB control number.

BURDEN HOURS STATEMENT: Public reporting burden for this form is estimated to average 8 hours per response, including the time for reviewing instructions, gathering and maintaining data, and completing and reviewing the form. Direct comments regarding the burden estimate or any other aspect of this form to U.S. Department of the Interior, Bureau of Land Management (1004-0137), Bureau Information Connection Clearance Officer (WO-630), 1849 C Street, N.W., Mail Stop 401 LS, Washington, D.C. 20240.

Additional Operator Remarks

Location of Well

1. SHL: NENW / 613 FNL / 2420 FWL / TWSP: 24S / RANGE: 31E / SECTION: 19 / LAT: 32.208383 / LONG: -103.817855 (TVD: 0 feet, MD: 0 feet)
PPP: NENW / 330 FNL / 1590 FWL / TWSP: 24S / RANGE: 31E / SECTION: 19 / LAT: 32.20916 / LONG: -103.820538 (TVD: 12431 feet, MD: 12829 feet)
PPP: NESW / 2310 FSL / 1590 FWL / TWSP: 24S / RANGE: 31E / SECTION: 19 / LAT: 32.200984 / LONG: -103.819042 (TVD: 12431 feet, MD: 15469 feet)
BHL: SESW / 200 FSL / 1590 FWL / TWSP: 24S / RANGE: 31E / SECTION: 30 / LAT: 32.181567 / LONG: -103.820564 (TVD: 12431 feet, MD: 22867 feet)

BLM Point of Contact

Name: Priscilla Perez

Title: Legal Instruments Examiner

Phone: 5752345934

Email: pperez@blm.gov

Review and Appeal Rights

A person contesting a decision shall request a State Director review. This request must be filed within 20 working days of receipt of the Notice with the appropriate State Director (see 43 CFR 3165.3). The State Director review decision may be appealed to the Interior Board of Land Appeals, 801 North Quincy Street, Suite 300, Arlington, VA 22203 (see 43 CFR 3165.4). Contact the above listed Bureau of Land Management office for further information.

PECOS DISTRICT DRILLING CONDITIONS OF APPROVAL

OPERATOR'S NAME:	XTO Permian Operating, LLC.
LEASE NO.:	NMNM-0025533
WELL NAME & NO.:	Poker Lake Unit 18 TWR 153H
SURFACE HOLE FOOTAGE:	0597' FNL & 1777' FWL
BOTTOM HOLE FOOTAGE:	0200' FSL & 1590' FWL Sec. 30, T. 24 S., R 31 E.
LOCATION:	Section 19, T. 24 S., R 31 E., NMPM
COUNTY:	County, New Mexico

Commercial Well Determination

A commercial well determination shall be submitted after production has been established for at least six months.

Unit Wells

The well sign for a unit well shall include the unit number in addition to the surface and bottom hole lease numbers. This also applies to participating area numbers. If a participating area has not been established, the operator can use the general unit designation, but will replace the unit number with the participating area number when the sign is replaced.

A. DRILLING OPERATIONS REQUIREMENTS

The BLM is to be notified in advance for a representative to witness:

- a. Spudding well (minimum of 24 hours)
- b. Setting and/or Cementing of all casing strings (minimum of 4 hours)
- c. BOPE tests (minimum of 4 hours)

☐ **Eddy County**

Call the Carlsbad Field Office, 620 East Greene St., Carlsbad, NM 88220,
(575) 361-2822

1. **Hydrogen Sulfide (H₂S) monitors shall be installed prior to drilling out the surface shoe. If H₂S is detected in concentrations greater than 100 ppm, the Hydrogen Sulfide area shall meet Onshore Order 6 requirements, which includes equipment and personnel/public protection items. If Hydrogen Sulfide is encountered, provide measured values and formations to the BLM.**

2. Unless the production casing has been run and cemented or the well has been properly plugged, the drilling rig shall not be removed from over the hole without prior approval. **If the drilling rig is removed without approval – an Incident of Non-Compliance will be written and will be a “Major” violation.**
3. Floor controls are required for 3M or Greater systems. These controls will be on the rig floor, unobstructed, readily accessible to the driller and will be operational at all times during drilling and/or completion activities. Rig floor is defined as the area immediately around the rotary table; the area immediately above the substructure on which the draw works is located, this does not include the dog house or stairway area.
4. **The record of the drilling rate along with the GR/N well log run from TD to surface (horizontal well – vertical portion of hole) shall be submitted to the BLM office as well as all other logs run on the borehole 30 days from completion. If available, a digital copy of the logs is to be submitted in addition to the paper copies. The Rustler top and top and bottom of Salt are to be recorded on the Completion Report.**

B. CASING

Changes to the approved APD casing program need prior approval if the items substituted are of lesser grade or different casing size or are Non-API. The Operator can exchange the components of the proposal with that of superior strength (i.e. changing from J-55 to N-80, or from 36# to 40#). Changes to the approved cement program need prior approval if the altered cement plan has less volume or strength or if the changes are substantial (i.e. Multistage tool, ECP, etc.). The initial wellhead installed on the well will remain on the well with spools used as needed.

Centralizers required on surface casing per Onshore Order 2.III.B.1.f.

Wait on cement (WOC) for Water Basin:

After cementing but before commencing any tests, the casing string shall stand cemented under pressure until both of the following conditions have been met: 1) cement reaches a minimum compressive strength of 500 psi at the shoe, 2) until cement has been in place at least **8 hours**. WOC time will be recorded in the driller's log. See individual casing strings for details regarding lead cement slurry requirements.

Provide compressive strengths including hours to reach required 500 pounds compressive strength prior to cementing each casing string. Have well specific cement details onsite prior to pumping the cement for each casing string.

No pea gravel permitted for remedial or fall back remedial without prior authorization from the BLM engineer.

Possibility of water flows in the Salado and Castile.

Possibility of lost circulation in the Red Beds, Rustler, and Delaware.

Abnormal pressure may be encountered in the 3rd Bone Spring and all subsequent formations.

1. The **18-5/8** inch surface casing shall be set at approximately **720** feet (**in a competent bed below the Magenta Dolomite, which is a Member of the Rustler, and if salt is encountered, set casing at least 25 feet above the salt**) and cemented to the surface.
 - a. If cement does not circulate to the surface, the appropriate BLM office shall be notified and a temperature survey utilizing an electronic type temperature survey with surface log readout will be used or a cement bond log shall be run to verify the top of the cement. Temperature survey will be run a minimum of six hours after pumping cement and ideally between 8-10 hours after completing the cement job.
 - b. **Wait on cement (WOC) time for a primary cement job is to include the lead cement slurry.**
 - c. Wait on cement (WOC) time for a remedial job will be a minimum of 4 hours after bringing cement to surface or 500 pounds compressive strength, whichever is greater.
 - d. If cement falls back, remedial cementing will be done prior to drilling out that string.

2. The minimum required fill of cement behind the **13-3/8** inch intermediate casing is:

☐ Cement to surface. If cement does not circulate see B.1.a, c-d above.

Formation below the 13-3/8" shoe to be tested according to Onshore Order 2.III.B.1.i. Test to be done as a mud equivalency test using the mud weight necessary for the pore pressure of the formation below the shoe (not the mud weight required to prevent dissolving the salt formation) and the mud weight for the bottom of the hole. Report results to BLM office.

9-5/8" Intermediate casing shall be kept fluid filled while running into hole to meet BLM minimum collapse requirements.

3. The minimum required fill of cement behind the **9-5/8** inch intermediate casing is:

Operator has proposed DV tool at depth of 4200', but will adjust cement proportionately if moved. DV tool shall be set a minimum of 50' below previous shoe and a minimum of 200' above current shoe. Operator shall submit sundry if DV tool depth cannot be set in this range. If an ECP is used, it is to be set a minimum of 50' below the shoe to provide cement across the shoe. If it cannot be set below the shoe, a CBL shall be run to verify cement coverage.

a. First stage to DV tool: _____

☒ Cement to circulate. If cement does not circulate, contact the appropriate BLM office before proceeding with second stage cement job. Operator should have plans as to how they will achieve circulation on the next stage. **Excess calculates to 16% - Additional cement may be required.**

b. Second stage above DV tool:

☐ Cement to surface. If cement does not circulate, contact the appropriate BLM office.

Formation below the 9-5/8" shoe to be tested according to Onshore Order 2.III.B.1.i. Test to be done as a mud equivalency test using the mud weight necessary for the pore pressure of the formation below the shoe (not the mud weight required to prevent dissolving the salt formation) and the mud weight for the bottom of the hole. Report results to BLM office.

Centralizers required on horizontal leg, must be type for horizontal service and a minimum of one every other joint.

5-1/2" Production casing shall be kept fluid filled while running into hole to meet BLM minimum collapse requirements.

4. The minimum required fill of cement behind the **5-1/2** inch production casing is:

- ☐ Cement should tie-back at least 200 feet into previous casing string. Operator shall provide method of verification.
- 5. If hardband drill pipe is rotated inside casing, returns will be monitored for metal. If metal is found in samples, drill pipe will be pulled and rubber protectors which have a larger diameter than the tool joints of the drill pipe will be installed prior to continuing drilling operations.

C. PRESSURE CONTROL

1. All blowout preventer (BOP) and related equipment (BOPE) shall comply with well control requirements as described in Onshore Oil and Gas Order No. 2 and API 53.
2. Variance approved to use flex line from BOP to choke manifold. Check condition of flexible line from BOP to choke manifold, replace if exterior is damaged or if line fails test. Line to be as straight as possible with no hard bends and is to be anchored according to Manufacturer's requirements. The flexible hose can be exchanged with a hose of equal size and equal or greater pressure rating. **Anchor requirements, specification sheet and hydrostatic pressure test certification matching the hose in service, to be onsite for review. These documents shall be posted in the company man's trailer and on the rig floor.** If the BLM inspector questions the straightness of the hose, a BLM engineer will be contacted and will review in the field or via picture supplied by inspector to determine if changes are required (operator shall expect delays if this occurs).
3. Minimum working pressure of the blowout preventer (BOP) and related equipment (BOPE) required for drilling below the surface casing shoe shall be psi.
4. **Operator has proposed a multi-bowl wellhead assembly. This assembly will only be tested when installed on the 13-3/8" intermediate casing. Minimum working pressure of the blowout preventer (BOP) and related equipment (BOPE) required for drilling below the 13-3/8" intermediate casing shoe shall be psi.**
 - a. **Wellhead shall be installed by manufacturer's representatives, submit documentation with subsequent sundry.**

- b. If the welding is performed by a third party, the manufacturer's representative shall monitor the temperature to verify that it does not exceed the maximum temperature of the seal.
- c. Manufacturer representative shall install the test plug for the initial BOP test.
- d. Operator shall perform the 9-5/8" intermediate casing integrity test to 70% of the casing burst. This will test the multi-bowl seals.
- e. If the cement does not circulate and one inch operations would have been possible with a standard wellhead, the well head shall be cut off, cementing operations performed and another wellhead installed.

Variance approved to use a 5M annular. The annular must be tested to full working pressure (5000 psi.)

10M system requires an HCR valve, remote kill line and annular to match. The remote kill line is to be installed prior to testing the system and tested to stack pressure.

- 5. The appropriate BLM office shall be notified a minimum of hours in advance for a representative to witness the tests.
 - a. In a water basin, for all casing strings utilizing slips, these are to be set as soon as the crew and rig are ready and any fallback cement remediation has been done. The casing cut-off and BOP installation can be initiated four hours after installing the slips, which will be approximately six hours after bumping the plug. For those casing strings not using slips, the minimum wait time before cut-off is eight hours after bumping the plug. BOP/BOPE testing can begin after cut-off or once cement reaches 500 psi compressive strength (including lead when specified), whichever is greater. However, if the float does not hold, cut-off cannot be initiated until cement reaches 500 psi compressive strength (including lead when specified).
 - a. The tests shall be done by an independent service company utilizing a test plug **not a cup or J-packer**.
 - b. The test shall be run on a 5000 psi chart for a 2-3M BOP/BOP, on a 10000 psi chart for a 5M BOP/BOPE and on a 15000 psi chart for a 10M BOP/BOPE.

If a linear chart is used, it shall be a one hour chart. A circular chart shall have a maximum 2 hour clock. If a twelve hour or twenty-four hour chart is used, tester shall make a notation that it is run with a two hour clock.

- c. The results of the test shall be reported to the appropriate BLM office.
- d. All tests are required to be recorded on a calibrated test chart. **A copy of the BOP/BOPE test chart and a copy of independent service company test will be submitted to the appropriate BLM office.**
- e. The BOP/BOPE test shall include a low pressure test from 250 to 300 psi. The test will be held for a minimum of 10 minutes if test is done with a test plug and 30 minutes without a test plug. This test shall be performed prior to the test at full stack pressure.
- f. BOP/BOPE must be tested by an independent service company within 500 feet of the top of the **Wolfcamp** formation if the time between the setting of the intermediate casing and reaching this depth exceeds 20 days. This test does not exclude the test prior to drilling out the casing shoe as per Onshore Order No. 2.

D. DRILLING MUD

Mud system monitoring equipment, with derrick floor indicators and visual and audio alarms, shall be operating before drilling into the **Wolfcamp** formation, and shall be used until production casing is run and cemented.

E. DRILL STEM TEST

If drill stem tests are performed, Onshore Order 2.III.D shall be followed.

F. WASTE MATERIAL AND FLUIDS

All waste (i.e. drilling fluids, trash, salts, chemicals, sewage, gray water, etc.) created as a result of drilling operations and completion operations shall be safely contained and disposed of properly at a waste disposal facility. No waste material or fluid shall be disposed of on the well location or surrounding area.

Porto-johns and trash containers will be on-location during fracturing operations or any other crew-intensive operations.

JAM 092019

**PECOS DISTRICT
SURFACE USE
CONDITIONS OF APPROVAL**

OPERATOR'S NAME:	XTO Permian Operating LLC
WELL NAME & NO.:	Poker Lake Unit 18 TWR 153H
SURFACE HOLE FOOTAGE:	613'/N & 2420'/W
BOTTOM HOLE FOOTAGE	200'/S & 1590'/W
LOCATION:	Section 19, T.24 S., R.31 E., NMPM
COUNTY:	Eddy County, New Mexico

TABLE OF CONTENTS

Standard Conditions of Approval (COA) apply to this APD. If any deviations to these standards exist or special COAs are required, the section with the deviation or requirement will be checked below.

- ☐ **General Provisions**
- ☐ **Permit Expiration**
- ☐ **Archaeology, Paleontology, and Historical Sites**
- ☐ **Noxious Weeds**
- ☒ **Special Requirements**
 - Lesser Prairie-Chicken Timing Stipulations
 - Ground-level Abandoned Well Marker
 - Hydrology
- ☐ **Construction**
 - Notification
 - Topsoil
 - Closed Loop System
 - Federal Mineral Material Pits
 - Well Pads
 - Roads
- ☐ **Road Section Diagram**
- ☒ **Production (Post Drilling)**
 - Well Structures & Facilities
 - Pipelines
 - Electric Lines
- ☐ **Interim Reclamation**
- ☐ **Final Abandonment & Reclamation**

I. GENERAL PROVISIONS

The approval of the Application For Permit To Drill (APD) is in compliance with all applicable laws and regulations: 43 Code of Federal Regulations 3160, the lease terms, Onshore Oil and Gas Orders, Notices To Lessees, New Mexico Oil Conservation Division (NMOCD) Rules, National Historical Preservation Act As Amended, and instructions and orders of the Authorized Officer. Any request for a variance shall be submitted to the Authorized Officer on Form 3160-5, Sundry Notices and Report on Wells.

II. PERMIT EXPIRATION

If the permit terminates prior to drilling and drilling cannot be commenced within 60 days after expiration, an operator is required to submit Form 3160-5, Sundry Notices and Reports on Wells, requesting surface reclamation requirements for any surface disturbance. However, if the operator will be able to initiate drilling within 60 days after the expiration of the permit, the operator must have set the conductor pipe in order to allow for an extension of 60 days beyond the expiration date of the APD. (Filing of a Sundry Notice is required for this 60 day extension.)

III. ARCHAEOLOGICAL, PALEONTOLOGY & HISTORICAL SITES

Any cultural and/or paleontological resource discovered by the operator or by any person working on the operator's behalf shall immediately report such findings to the Authorized Officer. The operator is fully accountable for the actions of their contractors and subcontractors. The operator shall suspend all operations in the immediate area of such discovery until written authorization to proceed is issued by the Authorized Officer. An evaluation of the discovery shall be made by the Authorized Officer to determine the appropriate actions that shall be required to prevent the loss of significant cultural or scientific values of the discovery. The operator shall be held responsible for the cost of the proper mitigation measures that the Authorized Officer assesses after consultation with the operator on the evaluation and decisions of the discovery. Any unauthorized collection or disturbance of cultural or paleontological resources may result in a shutdown order by the Authorized Officer.

IV. NOXIOUS WEEDS

The operator shall be held responsible if noxious weeds become established within the areas of operations. Weed control shall be required on the disturbed land where noxious weeds exist, which includes the roads, pads, associated pipeline corridor, and adjacent land affected by the establishment of weeds due to this action. The operator shall consult with the Authorized Officer for acceptable weed control methods, which include following EPA and BLM requirements and policies.

V. SPECIAL REQUIREMENT(S)

Timing Limitation Stipulation / Condition of Approval for lesser prairie-chicken:

Oil and gas activities including 3-D geophysical exploration, and drilling will not be allowed in lesser prairie-chicken habitat during the period from March 1st through June 15th annually. During that period, other activities that produce noise or involve human activity, such as the maintenance of oil and gas facilities, pipeline, road, and well pad construction, will be allowed except between 3:00 am and 9:00 am. The 3:00 am to 9:00 am restriction will not apply to normal, around-the-clock operations, such as venting, flaring, or pumping, which do not require a human presence during this period. Additionally, no new drilling will be allowed within up to 200 meters of leks known at the time of permitting. Normal vehicle use on existing roads will not be restricted. Exhaust noise from pump jack engines must be muffled or otherwise controlled so as not to exceed 75 db measured at 30 feet from the source of the noise.

Ground-level Abandoned Well Marker to avoid raptor perching: Upon the plugging and subsequent abandonment of the well, the well marker will be installed at ground level on a plate containing the pertinent information for the plugged well. For more installation details, contact the Carlsbad Field Office at 575-234-5972.

Timing Limitation Exceptions:

The Carlsbad Field Office will publish an annual map of where the LPC timing and noise stipulations and conditions of approval (Limitations) will apply for the identified year (between March 1 and June 15) based on the latest survey information. The LPC Timing Area map will identify areas which are Habitat Areas (HA), Isolated Population Area (IPA), and Primary Population Area (PPA). The LPC Timing Area map will also have an area in red crosshatch. The red crosshatch area is the only area where an operator is required to submit a request for exception to the LPC Limitations. If an operator is operating outside the red crosshatch area, the LPC Limitations do not apply for that year and an exception to LPC Limitations is not required.

Hydrology

The entire well pad(s) will be bermed to prevent oil, salt, and other chemical contaminants from leaving the well pad. The compacted berm shall be constructed at a minimum of 12 inches with impermeable mineral material (e.g. caliche). Topsoil shall not be used to construct the berm. No water flow from the uphill side(s) of the pad shall be allowed to enter the well pad. The integrity of the berm shall be maintained around the surfaced pad throughout the life of the well and around the downsized pad after interim reclamation has been completed. Any water erosion that may occur due to the construction of the well pad during the life of the well will be quickly corrected and proper measures will be taken to prevent future erosion. Stockpiling of topsoil is required. The top soil shall be stockpiled in an appropriate location to prevent loss of soil due to water or wind erosion and not used for berming or erosion control. If fluid collects

within the bermed area, the fluid must be vacuumed into a safe container and disposed of properly at a state approved facility.

Tank battery locations will be lined and bermed. A 20 mil permanent liner will be installed with a 4 oz. felt backing to prevent tears or punctures. Tank battery berms must be large enough to contain 1 ½ times the content of the largest tank or 24 hour production, whichever is greater. Automatic shut off, check valves, or similar systems will be installed for tanks to minimize the effects of catastrophic line failures used in production or drilling.

When crossing ephemeral drainages the pipeline(s) will be buried to a minimum depth of 48 inches from the top of pipe to ground level. Erosion control methods such as gabions and/or rock aprons should be placed on both up and downstream sides of the pipeline crossing. In addition, curled (weed free) wood/straw fiber wattles/logs and/or silt fences should be placed on the downstream side for sediment control during construction and maintained until soils and vegetation have stabilized. Water bars should be placed within the ROW to divert and dissipate surface runoff. A pipeline access road is not permitted to cross these ephemeral drainages. Traffic should be diverted to a preexisting route. Additional seeding may be required in floodplains and drainages to restore energy dissipating vegetation.

Prior to pipeline installation/construction a leak detection plan will be developed. The method(s) could incorporate gauges to detect pressure drops, situating valves and lines so they can be visually inspected periodically or installing electronic sensors to alarm when a leak is present. The leak detection plan will incorporate an automatic shut off system that will be installed for proposed pipelines to minimize the effects of an undesirable event.

Any water erosion that may occur due to the construction of overhead electric line and during the life of the power line will be quickly corrected and proper measures will be taken to prevent future erosion. A power pole should not be placed in drainages, playas, wetlands, riparian areas, or floodplains and must span across the features at a distance away that would not promote further erosion.

VI. CONSTRUCTION

A. NOTIFICATION

The BLM shall administer compliance and monitor construction of the access road and well pad. Notify the Carlsbad Field Office at (575) 234-5909 at least 3 working days prior to commencing construction of the access road and/or well pad.

When construction operations are being conducted on this well, the operator shall have the approved APD and Conditions of Approval (COA) on the well site and they shall be made available upon request by the Authorized Officer.

B. TOPSOIL

The operator shall strip the top portion of the soil (root zone) from the entire well pad area and stockpile the topsoil along the edge of the well pad as depicted in the APD. The root zone is typically six (6) inches in depth. All the stockpiled topsoil will be redistributed over the interim reclamation areas. Topsoil shall not be used for berming the pad or facilities. For final reclamation, the topsoil shall be spread over the entire pad area for seeding preparation.

Other subsoil (below six inches) stockpiles must be completely segregated from the topsoil stockpile. Large rocks or subsoil clods (not evident in the surrounding terrain) must be buried within the approved area for interim and final reclamation.

C. CLOSED LOOP SYSTEM

Tanks are required for drilling operations: No Pits.

The operator shall properly dispose of drilling contents at an authorized disposal site.

D. FEDERAL MINERAL MATERIALS PIT

Payment shall be made to the BLM prior to removal of any federal mineral materials. Call the Carlsbad Field Office at (575) 234-5972.

E. WELL PAD SURFACING

Surfacing of the well pad is not required.

If the operator elects to surface the well pad, the surfacing material may be required to be removed at the time of reclamation. The well pad shall be constructed in a manner which creates the smallest possible surface disturbance, consistent with safety and operational needs.

F. EXCLOSURE FENCING (CELLARS & PITS)

Exclosure Fencing

The operator will install and maintain exclosure fencing for all open well cellars to prevent access to public, livestock, and large forms of wildlife before and after drilling operations until the pit is free of fluids and the operator initiates backfilling. (For examples of exclosure fencing design, refer to BLM's Oil and Gas Gold Book, Exclosure Fence Illustrations, Figure 1, Page 18.)

G. ON LEASE ACCESS ROADS**Road Width**

The access road shall have a driving surface that creates the smallest possible surface disturbance and does not exceed fourteen (14) feet in width. The maximum width of surface disturbance, when constructing the access road, shall not exceed twenty-five (25) feet.

Surfacing

Surfacing material is not required on the new access road driving surface. If the operator elects to surface the new access road or pad, the surfacing material may be required to be removed at the time of reclamation.

Where possible, no improvements should be made on the unsurfaced access road other than to remove vegetation as necessary, road irregularities, safety issues, or to fill low areas that may sustain standing water.

The Authorized Officer reserves the right to require surfacing of any portion of the access road at any time deemed necessary. Surfacing may be required in the event the road deteriorates, erodes, road traffic increases, or it is determined to be beneficial for future field development. The surfacing depth and type of material will be determined at the time of notification.

Crowning

Crowning shall be done on the access road driving surface. The road crown shall have a grade of approximately 2% (i.e., a 1" crown on a 14' wide road). The road shall conform to Figure 1; cross section and plans for typical road construction.

Ditching

Ditching shall be required on both sides of the road.

Turnouts

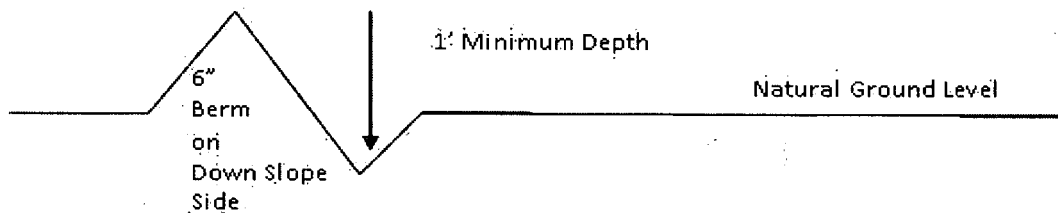
Vehicle turnouts shall be constructed on the road. Turnouts shall be intervisible with interval spacing distance less than 1000 feet. Turnouts shall conform to Figure 1; cross section and plans for typical road construction.

Drainage

Drainage control systems shall be constructed on the entire length of road (e.g. ditches, sidehill outsloping and insloping, lead-off ditches, culvert installation, and low water crossings).

A typical lead-off ditch has a minimum depth of 1 foot below and a berm of 6 inches above natural ground level. The berm shall be on the down-slope side of the lead-off ditch.

Cross Section of a Typical Lead-off Ditch



All lead-off ditches shall be graded to drain water with a 1 percent minimum to 3 percent maximum ditch slope. The spacing interval are variable for lead-off ditches and shall be determined according to the formula for spacing intervals of lead-off ditches, but may be amended depending upon existing soil types and centerline road slope (in %);

Formula for Spacing Interval of Lead-off Ditches

Example - On a 4% road slope that is 400 feet long, the water flow shall drain water into a lead-off ditch. Spacing interval shall be determined by the following formula:

$$400 \text{ foot road with } 4\% \text{ road slope: } \frac{400'}{4\%} + 100' = 200' \text{ lead-off ditch interval}$$

Cattle guards

An appropriately sized cattle guard sufficient to carry out the project shall be installed and maintained at fence/road crossings. Any existing cattle guards on the access road route shall be repaired or replaced if they are damaged or have deteriorated beyond practical use. The operator shall be responsible for the condition of the existing cattle guards that are in place and are utilized during lease operations.

Fence Requirement

Where entry is granted across a fence line, the fence shall be braced and tied off on both sides of the passageway prior to cutting. The operator shall notify the private surface landowner or the grazing allotment holder prior to crossing any fences.

Public Access

Public access on this road shall not be restricted by the operator without specific written approval granted by the Authorized Officer.

Construction Steps

1. Salvage topsoil
2. Construct road

3. Redistribute topsoil
4. Revegetate slopes

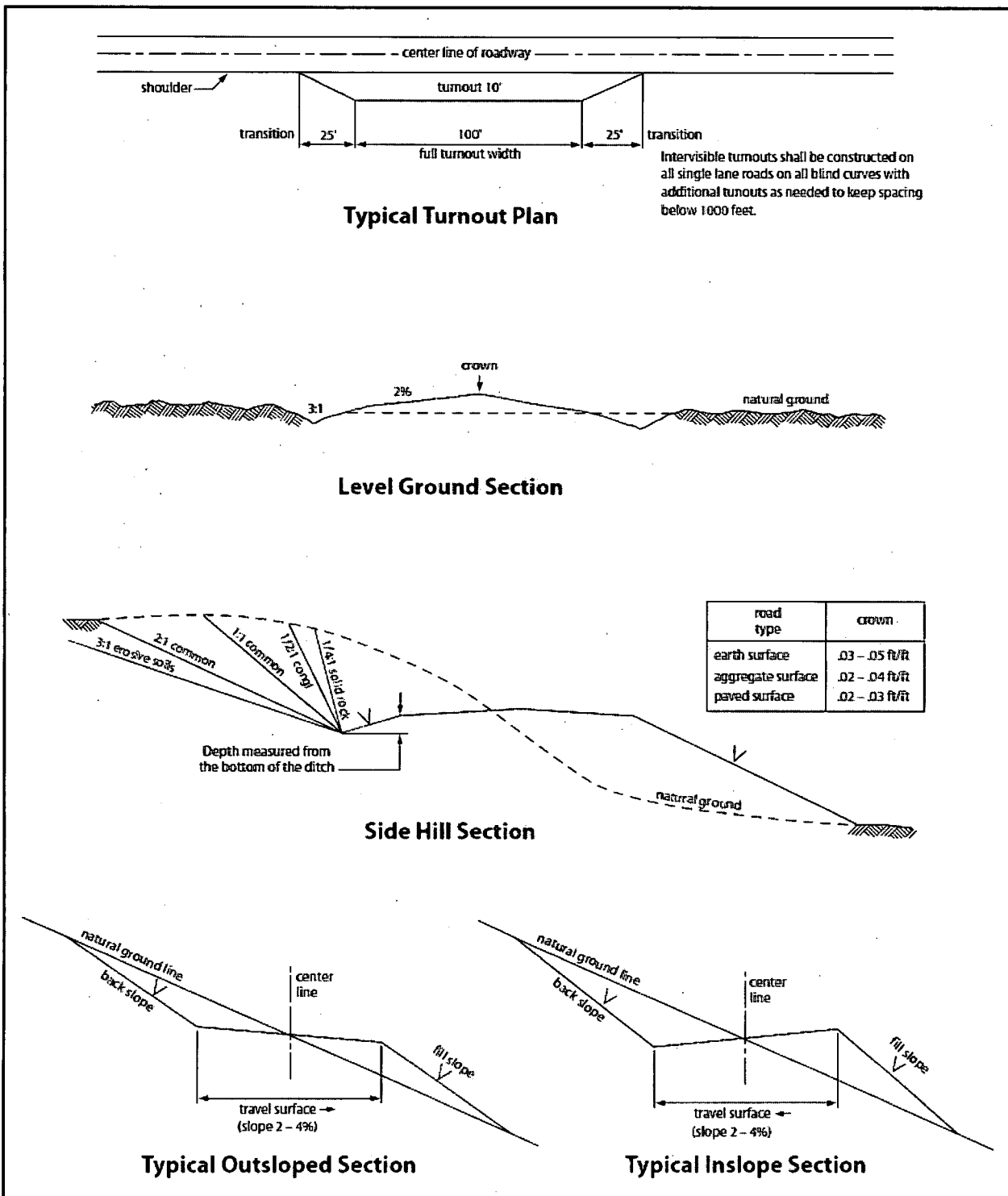


Figure 1. Cross-sections and plans for typical road sections representative of BLM resource or FS local and higher-class roads.

VII. PRODUCTION (POST DRILLING)

A. WELL STRUCTURES & FACILITIES

Placement of Production Facilities

Production facilities should be placed on the well pad to allow for maximum interim recontouring and revegetation of the well location.

Exclosure Netting (Open-top Tanks)

Immediately following active drilling or completion operations, the operator will take actions necessary to prevent wildlife and livestock access, including avian wildlife, to all open-topped tanks that contain or have the potential to contain salinity sufficient to cause harm to wildlife or livestock, hydrocarbons, or Resource Conservation and Recovery Act of 1976-exempt hazardous substances. At a minimum, the operator will net, screen, or cover open-topped tanks to exclude wildlife and livestock and prevent mortality. If the operator uses netting, the operator will cover and secure the open portion of the tank to prevent wildlife entry. The operator will net, screen, or cover the tanks until the operator removes the tanks from the location or the tanks no longer contain substances that could be harmful to wildlife or livestock. Use a maximum netting mesh size of 1 ½ inches. The netting must not be in contact with fluids and must not have holes or gaps.

Chemical and Fuel Secondary Containment and Exclosure Screening

The operator will prevent all hazardous, poisonous, flammable, and toxic substances from coming into contact with soil and water. At a minimum, the operator will install and maintain an impervious secondary containment system for any tank or barrel containing hazardous, poisonous, flammable, or toxic substances sufficient to contain the contents of the tank or barrel and any drips, leaks, and anticipated precipitation. The operator will dispose of fluids within the containment system that do not meet applicable state or U. S. Environmental Protection Agency livestock water standards in accordance with state law; the operator must not drain the fluids to the soil or ground. The operator will design, construct, and maintain all secondary containment systems to prevent wildlife and livestock exposure to harmful substances. At a minimum, the operator will install effective wildlife and livestock exclosure systems such as fencing, netting, expanded metal mesh, lids, and grate covers. Use a maximum netting mesh size of 1 ½ inches.

Open-Vent Exhaust Stack Exclosures

The operator will construct, modify, equip, and maintain all open-vent exhaust stacks on production equipment to prevent birds and bats from entering, and to discourage perching, roosting, and nesting. (*Recommended exclosure structures on open-vent exhaust stacks are in the shape of a cone.*) Production equipment includes, but may not be limited to, tanks, heater-treaters, separators, dehydrators, flare stacks, in-line units, and compressor mufflers.

Containment Structures

Proposed production facilities such as storage tanks and other vessels will have a secondary containment structure that is constructed to hold the capacity of 1.5 times the largest tank, plus freeboard to account for precipitation, unless more stringent protective requirements are deemed necessary.

Painting Requirement

All above-ground structures including meter housing that are not subject to safety requirements shall be painted a flat non-reflective paint color, **Shale Green** from the BLM Standard Environmental Color Chart (CC-001: June 2008).

B. PIPELINES

STANDARD STIPULATIONS FOR SURFACE INSTALLED PIPELINES

A copy of the application (Grant, Sundry Notice, APD) and attachments, including stipulations, survey plat and/or map, will be on location during construction. BLM personnel may request to you a copy of your permit during construction to ensure compliance with all stipulations.

Holder agrees to comply with the following stipulations to the satisfaction of the Authorized Officer:

1. The holder shall indemnify the United States against any liability for damage to life or property arising from the occupancy or use of public lands under this grant.
2. The holder shall comply with all applicable Federal laws and regulations existing or hereafter enacted or promulgated. In any event, the holder shall comply with the Toxic Substances Control Act of 1976 as amended, 15 USC 2601 et seq. (1982) with regards to any toxic substances that are used, generated by or stored on the right-of-way or on facilities authorized under this right-of-way grant. (See 40 CFR, Part 702-799 and especially, provisions on polychlorinated biphenyls, 40 CFR 761.1-761.193.) Additionally, any release of toxic substances (leaks, spills, etc.) in excess of the reportable quantity established by 40 CFR, Part 117 shall be reported as required by the Comprehensive Environmental Response, Compensation, and Liability Act, section 102b. A copy of any report required or requested by any Federal agency or State government as a result of a reportable release or spill of any toxic substances shall be furnished to the authorized officer concurrent with the filing of the reports to the involved Federal agency or State government.
3. The holder agrees to indemnify the United States against any liability arising from the release of any hazardous substance or hazardous waste (as these terms are defined in the Comprehensive Environmental Response, Compensation and Liability Act of 1980, 42 U.S.C. 9601, et seq. or the Resource Conservation and Recovery Act, 42 U.S.C. 6901, et seq.) on the Right-of-Way (unless the release or threatened release is wholly unrelated to activity of the Right-of-Way holder's activity on the Right-of-Way), or resulting from the activity of the Right-of-Way holder on the Right-of-Way. This agreement applies without regard to whether a release is caused by the holder, its agent, or unrelated third parties.

4. The holder shall be liable for damage or injury to the United States to the extent provided by 43 CFR Sec. 2883.1-4. The holder shall be held to a standard of strict liability for damage or injury to the United States resulting from pipe rupture, fire, or spills caused or substantially aggravated by any of the following within the right-of-way or permit area:

- a. Activities of the holder including, but not limited to construction, operation, maintenance, and termination of the facility.
- b. Activities of other parties including, but not limited to:
 - (1) Land clearing.
 - (2) Earth-disturbing and earth-moving work.
 - (3) Blasting.
 - (4) Vandalism and sabotage.
- c. Acts of God.

The maximum limitation for such strict liability damages shall not exceed one million dollars (\$1,000,000) for any one event, and any liability in excess of such amount shall be determined by the ordinary rules of negligence of the jurisdiction in which the damage or injury occurred.

This section shall not impose strict liability for damage or injury resulting primarily from an act of war or from the negligent acts or omissions of the United States.

5. If, during any phase of the construction, operation, maintenance, or termination of the pipeline, any oil, salt water, or other pollutant should be discharged from the pipeline system, impacting Federal lands, the control and total removal, disposal, and cleaning up of such oil, salt water, or other pollutant, wherever found, shall be the responsibility of the holder, regardless of fault. Upon failure of the holder to control, dispose of, or clean up such discharge on or affecting Federal lands, or to repair all damages resulting therefrom, on the Federal lands, the Authorized Officer may take such measures as he deems necessary to control and clean up the discharge and restore the area, including, where appropriate, the aquatic environment and fish and wildlife habitats, at the full expense of the holder. Such action by the Authorized Officer shall not relieve the holder of any responsibility as provided herein.

6. All construction and maintenance activity will be confined to the authorized right-of-way width of 20 feet. If the pipeline route follows an existing road or buried pipeline right-of-way, the surface pipeline must be installed no farther than 10 feet from the edge of the road or buried pipeline right-of-way. If existing surface pipelines prevent this distance, the proposed surface pipeline must be installed immediately adjacent to the outer surface pipeline. All construction and maintenance activity will be confined to existing roads or right-of-ways.

7. No blading or clearing of any vegetation will be allowed unless approved in writing by the Authorized Officer.

8. The holder shall install the pipeline on the surface in such a manner that will minimize suspension of the pipeline across low areas in the terrain. In hummocky or dune areas, the pipeline will be "snaked" around hummocks and dunes rather than suspended across these features.

9. The pipeline shall be buried with a minimum of 24 inches under all roads, "two-tracks," and trails. Burial of the pipe will continue for 20 feet on each side of each crossing. The condition of the road, upon completion of construction, shall be returned to at least its former state with no bumps or dips remaining in the road surface.

10. The holder shall minimize disturbance to existing fences and other improvements on public lands. The holder is required to promptly repair improvements to at least their former state. Functional use of these improvements will be maintained at all times. The holder will contact the owner of any improvements prior to disturbing them. When necessary to pass through a fence line, the fence shall be braced on both sides of the passageway prior to cutting of the fence. No permanent gates will be allowed unless approved by the Authorized Officer.

11. In those areas where erosion control structures are required to stabilize soil conditions, the holder will install such structures as are suitable for the specific soil conditions being encountered and which are in accordance with sound resource management practices.

12. Excluding the pipe, all above-ground structures not subject to safety requirement shall be painted by the holder to blend with the natural color of the landscape. The paint used shall be a color which simulates "Standard Environmental Colors" – **Shale Green**, Munsell Soil Color No. 5Y 4/2; designated by the Rocky Mountain Five State Interagency Committee.

13. The pipeline will be identified by signs at the point of origin and completion of the right-of-way and at all road crossings. At a minimum, signs will state the holder's name, BLM serial number, and the product being transported. Signs will be maintained in a legible condition for the life of the pipeline.

14. The holder shall not use the pipeline route as a road for purposes other than routine maintenance as determined necessary by the Authorized Officer in consultation with the holder. The holder will take whatever steps are necessary to ensure that the pipeline route is not used as a roadway.

15. Any cultural and/or paleontological resource (historic or prehistoric site or object) discovered by the holder, or any person working on his behalf, on public or Federal land shall be immediately reported to the authorized officer. Holder shall suspend all operations in the immediate area of such discovery until written authorization to proceed is issued by the authorized officer. An evaluation of the discovery will be made by the authorized officer to determine appropriate cultural or scientific values. The holder will

be responsible for the cost of evaluation and any decision as to proper mitigation measures will be made by the authorized officer after consulting with the holder.

16. The operator shall be held responsible if noxious weeds become established within the areas of operations. Weed control shall be required on the disturbed land where noxious weeds exist, which includes the roads, powerline corridor, and adjacent land affected by the establishment of weeds due to this action. The operator shall consult with the Authorized Officer for acceptable weed control methods, which include following EPA and BLM requirements and policies.

17. Surface pipelines must be less than or equal to 4 inches and a working pressure below 125 psi.

18. Special Stipulations:

- a. **Lesser Prairie-Chicken:** Oil and gas activities will not be allowed in lesser prairie-chicken habitat during the period from March 1st through June 15th annually. During that period, other activities that produce noise or involve human activity, such as the maintenance of oil and gas facilities and pipeline, road, and well pad construction, will be allowed except between 3:00 am and 9:00 am. The 3:00 am to 9:00 am restriction will not apply to normal, around-the-clock operations, such as venting, flaring, or pumping, which do not require a human presence during this period. Normal vehicle use on existing roads will not be restricted.

BURIED PIPELINE STIPULATIONS

A copy of the application (Grant, APD, or Sundry Notice) and attachments, including conditions of approval, survey plat and/or map, will be on location during construction. BLM personnel may request to you a copy of your permit during construction to ensure compliance with all stipulations.

Holder agrees to comply with the following stipulations to the satisfaction of the Authorized Officer:

1. The Holder shall indemnify the United States against any liability for damage to life or property arising from the occupancy or use of public lands under this grant.
2. The Holder shall comply with all applicable Federal laws and regulations existing or hereafter enacted or promulgated. In any event, the holder shall comply with the Toxic Substances Control Act of 1976 as amended, 15 USC 2601 et seq. (1982) with regards to any toxic substances that are used, generated by or stored on the right-of-way or on facilities authorized under this right-of-way grant. (See 40 CFR Part 702-799 and especially, provisions on polychlorinated biphenyls, 40 CFR 761.1-761.193.) Additionally, any release of toxic substances (leaks, spills, etc.) in excess of the reportable quantity established by 40 CFR Part 117 shall be reported as required by the

Comprehensive Environmental Response, Compensation, and Liability Act, section 102b. A copy of any report required or requested by any Federal agency or State government as a result of a reportable release or spill of any toxic substances shall be furnished to the authorized officer concurrent with the filing of the reports to the involved Federal agency or State government.

3. The holder agrees to indemnify the United States against any liability arising from the release of any hazardous substance or hazardous waste (as these terms are defined in the Comprehensive Environmental Response, Compensation and Liability Act of 1980, 42 U.S.C. 9601, et seq. or the Resource Conservation and Recovery Act, 42 U.S.C. 6901, et seq.) on the Right-of-Way (unless the release or threatened release is wholly unrelated to the Right-of-Way holder's activity on the Right-of-Way), or resulting from the activity of the Right-of-Way holder on the Right-of-Way. This agreement applies without regard to whether a release is caused by the holder, its agent, or unrelated third parties.

4. If, during any phase of the construction, operation, maintenance, or termination of the pipeline, any oil or other pollutant should be discharged from the pipeline system, impacting Federal lands, the control and total removal, disposal, and cleaning up of such oil or other pollutant, wherever found, shall be the responsibility of holder, regardless of fault. Upon failure of holder to control, dispose of, or clean up such discharge on or affecting Federal lands, or to repair all damages resulting therefrom, on the Federal lands, the Authorized Officer may take such measures as he deems necessary to control and clean up the discharge and restore the area, including where appropriate, the aquatic environment and fish and wildlife habitats, at the full expense of the holder. Such action by the Authorized Officer shall not relieve holder of any responsibility as provided herein.

5. All construction and maintenance activity will be confined to the authorized right-of-way.

6. The pipeline will be buried with a minimum cover of 36 inches between the top of the pipe and ground level.

7. The maximum allowable disturbance for construction in this right-of-way will be 30 feet:

- Blading of vegetation within the right-of-way will be allowed: maximum width of blading operations will not exceed 20 feet. The trench is included in this area. (*Blading is defined as the complete removal of brush and ground vegetation.*)

- Clearing of brush species within the right-of-way will be allowed: maximum width of clearing operations will not exceed **30** feet. The trench and bladed area are included in this area. *(Clearing is defined as the removal of brush while leaving ground vegetation (grasses, weeds, etc.) intact. Clearing is best accomplished by holding the blade 4 to 6 inches above the ground surface.)*
- The remaining area of the right-of-way (if any) shall only be disturbed by compressing the vegetation. *(Compressing can be caused by vehicle tires, placement of equipment, etc.)*

8. The holder shall stockpile an adequate amount of topsoil where blading is allowed. The topsoil to be stripped is approximately 6 inches in depth. The topsoil will be segregated from other spoil piles from trench construction. The topsoil will be evenly distributed over the bladed area for the preparation of seeding.

9. The holder shall minimize disturbance to existing fences and other improvements on public lands. The holder is required to promptly repair improvements to at least their former state. Functional use of these improvements will be maintained at all times. The holder will contact the owner of any improvements prior to disturbing them. When necessary to pass through a fence line, the fence shall be braced on both sides of the passageway prior to cutting of the fence. No permanent gates will be allowed unless approved by the Authorized Officer.

10. Vegetation, soil, and rocks left as a result of construction or maintenance activity will be randomly scattered on this right-of-way and will not be left in rows, piles, or berms, unless otherwise approved by the Authorized Officer. The entire right-of-way shall be recontoured to match the surrounding landscape. The backfilled soil shall be compacted and a 6 inch berm will be left over the ditch line to allow for settling back to grade.

11. In those areas where erosion control structures are required to stabilize soil conditions, the holder will install such structures as are suitable for the specific soil conditions being encountered and which are in accordance with sound resource management practices.

12. The holder will reseed all disturbed areas. Seeding will be done according to the attached seeding requirements, using the following seed mix.

- | | |
|--|--|
| <input type="checkbox"/> seed mixture 1 | <input type="checkbox"/> seed mixture 3 |
| <input type="checkbox"/> seed mixture 2 | <input type="checkbox"/> seed mixture 4 |
| <input checked="" type="checkbox"/> seed mixture 2/LPC | <input type="checkbox"/> Aplomado Falcon Mixture |

13. All above-ground structures not subject to safety requirements shall be painted by the holder to blend with the natural color of the landscape. The paint used shall be color which simulates "Standard Environmental Colors" – **Shale Green**, Munsell Soil Color No. 5Y 4/2.

14. The pipeline will be identified by signs at the point of origin and completion of the right-of-way and at all road crossings. At a minimum, signs will state the holder's name, BLM serial number, and the product being transported. All signs and information thereon will be posted in a permanent, conspicuous manner, and will be maintained in a legible condition for the life of the pipeline.

15. The holder shall not use the pipeline route as a road for purposes other than routine maintenance as determined necessary by the Authorized Officer in consultation with the holder before maintenance begins. The holder will take whatever steps are necessary to ensure that the pipeline route is not used as a roadway. As determined necessary during the life of the pipeline, the Authorized Officer may ask the holder to construct temporary deterrence structures.

16. Any cultural and/or paleontological resources (historic or prehistoric site or object) discovered by the holder, or any person working on his behalf, on public or Federal land shall be immediately reported to the Authorized Officer. Holder shall suspend all operations in the immediate area of such discovery until written authorization to proceed is issued by the Authorized Officer. An evaluation of the discovery will be made by the Authorized Officer to determine appropriate actions to prevent the loss of significant cultural or scientific values. The holder will be responsible for the cost of evaluation and any decision as to proper mitigation measures will be made by the Authorized Officer after consulting with the holder.

17. The operator shall be held responsible if noxious weeds become established within the areas of operations. Weed control shall be required on the disturbed land where noxious weeds exist, which includes associated roads, pipeline corridor and adjacent land affected by the establishment of weeds due to this action. The operator shall consult with the Authorized Officer for acceptable weed control methods, which include following EPA and BLM requirements and policies.

18. Escape Ramps - The operator will construct and maintain pipeline/utility trenches [that are not otherwise fenced, screened, or netted] to prevent livestock, wildlife, and humans from becoming entrapped. At a minimum, the operator will construct and maintain escape ramps, ladders, or other methods of avian and terrestrial wildlife escape in the trenches according to the following criteria:

- a. Any trench left open for eight (8) hours or less is not required to have escape ramps; however, before the trench is backfilled, the contractor/operator shall inspect the trench for wildlife, remove all trapped wildlife, and release them at least 100 yards from the trench.
- b. For trenches left open for eight (8) hours or more, earthen escape ramps (built at no more than a 30 degree slope and spaced no more than 500 feet apart) shall be placed in the trench.

19. Special Stipulations:

Lesser Prairie-Chicken

Oil and gas activities will not be allowed in lesser prairie-chicken habitat during the period from March 1st through June 15th annually. During that period, other activities that produce noise or involve human activity, such as the maintenance of oil and gas facilities, geophysical exploration other than 3-D operations, and pipeline, road, and well pad construction, will be allowed except between 3:00 am and 9:00 am. The 3:00 am to 9:00 am restriction will not apply to normal, around-the-clock operations, such as venting, flaring, or pumping, which do not require a human presence during this period. Normal vehicle use on existing roads will not be restricted. Exhaust noise from pump jack engines must be muffled or otherwise controlled so as not to exceed 75 db measured at 30 ft. from the source of the noise.

C. ELECTRIC LINES

STANDARD STIPULATIONS FOR OVERHEAD ELECTRIC DISTRIBUTION LINES

A copy of the grant and attachments, including stipulations, survey plat and/or map, will be on location during construction. BLM personnel may request to you a copy of your permit during construction to ensure compliance with all stipulations.

Holder agrees to comply with the following stipulations to the satisfaction of the Authorized Officer:

1. The holder shall indemnify the United States against any liability for damage to life or property arising from the occupancy or use of public lands under this grant.
2. The holder shall comply with all applicable Federal laws and regulations existing or hereafter enacted or promulgated. In any event, the holder shall comply with the Toxic Substances Control Act of 1976 as amended, 15 USC 2601 *et seq.* (1982) with regards to any toxic substances that are used, generated by or stored on the right-of-way or on facilities authorized under this right-of-way grant. (See 40 CFR, Part 702-799 and especially, provisions on polychlorinated biphenyls, 40 CFR 761.1-761.193.) Additionally, any release of toxic substances (leaks, spills, etc.) in excess of the reportable quantity established by 40 CFR, Part 117 shall be reported as required by the

Comprehensive Environmental Response, Compensation, and Liability Act, section 102b. A copy of any report required or requested by any Federal agency or State government as a result of a reportable release or spill of any toxic substances shall be furnished to the authorized officer concurrent with the filing of the reports to the involved Federal agency or State government.

3. The holder agrees to indemnify the United States against any liability arising from the release of any hazardous substance or hazardous waste (as these terms are defined in the Comprehensive Environmental Response, Compensation and Liability Act of 1980, 42 U.S.C. 9601, et seq. or the Resource Conservation and Recovery Act, 42 U.S.C. 6901, et seq.) on the Right-of-Way (unless the release or threatened release is wholly unrelated to the Right-of-Way holder's activity on the Right-of-Way), or resulting from the activity of the Right-of-Way holder on the Right-of-Way. This agreement applies without regard to whether a release is caused by the holder, its agent, or unrelated third parties.

4. There will be no clearing or blading of the right-of-way unless otherwise agreed to in writing by the Authorized Officer.

5. Power lines shall be constructed and designed in accordance to standards outlined in "Suggested Practices for Avian Protection on Power lines: The State of the Art in 2006" Edison Electric Institute, APLIC, and the California Energy Commission 2006 . The holder shall assume the burden and expense of proving that pole designs not shown in the above publication deter raptor perching, roosting, and nesting. Such proof shall be provided by a raptor expert approved by the Authorized Officer. The BLM reserves the right to require modification or additions to all powerline structures placed on this right-of-way, should they be necessary to ensure the safety of large perching birds. Such modifications and/or additions shall be made by the holder without liability or expense to the United States.

Raptor deterrence will consist of but not limited to the following: triangle perch discouragers shall be placed on each side of the cross arms and a nonconductive perching deterrence shall be placed on all vertical poles that extend past the cross arms.

6. The holder shall minimize disturbance to existing fences and other improvements on public lands. The holder is required to promptly repair improvements to at least their former state. Functional use of these improvements will be maintained at all times. The holder will contact the owner of any improvements prior to disturbing them. When necessary to pass through a fence line, the fence shall be braced on both sides of the passageway prior to cutting the fence. No permanent gates will be allowed unless approved by the Authorized Officer.

7. The BLM serial number assigned to this authorization shall be posted in a permanent, conspicuous manner where the power line crosses roads and at all serviced facilities. Numbers will be at least two inches high and will be affixed to the pole nearest the road crossing and at the facilities served.

8. Upon cancellation, relinquishment, or expiration of this grant, the holder shall comply with those abandonment procedures as prescribed by the Authorized Officer.

9. All surface structures (poles, lines, transformers, etc.) shall be removed within 180 days of abandonment, relinquishment, or termination of use of the serviced facility or facilities or within 180 days of abandonment, relinquishment, cancellation, or expiration of this grant, whichever comes first. This will not apply where the power line extends service to an active, adjoining facility or facilities.

10. Any cultural and/or paleontological resource (historic or prehistoric site or object) discovered by the holder, or any person working on his behalf, on public or Federal land shall be immediately reported to the Authorized Officer. Holder shall suspend all operations in the immediate area of such discovery until written authorization to proceed is issued by the Authorized Officer. An evaluation of the discovery will be made by the Authorized Officer to determine appropriate actions to prevent the loss of significant cultural or scientific values. The holder will be responsible for the cost of evaluation and any decision as to proper mitigation measures will be made by the Authorized Officer after consulting with the holder.

11. Special Stipulations:

- For reclamation remove poles, lines, transformer, etc. and dispose of properly.
- Fill in any holes from the poles removed.

Timing Limitation Stipulation/Condition of Approval for Lesser Prairie-Chicken:

Oil and gas activities including 3-D geophysical exploration, and drilling will not be allowed in lesser prairie-chicken habitat during the period from March 1st through June 15th annually. During that period, other activities that produce noise or involve human activity, such as the maintenance of oil and gas facilities, geophysical exploration other than 3-D operations, and pipeline, road, and well pad construction, will be allowed except between 3:00 am and 9:00 am. The 3:00 am to 9:00 am restriction will not apply to normal, around-the-clock operations, such as venting, flaring, or pumping, which do not require a human presence during this period. Additionally, no new drilling will be allowed within up to 200 meters of leks known at the time of permitting. Normal vehicle use on existing roads will not be restricted. Exhaust noise from pump jack engines must be muffled or otherwise controlled so as not to exceed 75 db measured at 30 ft. from the source of the noise.

VIII. INTERIM RECLAMATION

During the life of the development, all disturbed areas not needed for active support of production operations should undergo interim reclamation in order to minimize the environmental impacts of development on other resources and uses.

Within six (6) months of well completion, operators should work with BLM surface management specialists (Jim Amos: 575-234-5909) to devise the best strategies to reduce

the size of the location. Interim reclamation should allow for remedial well operations, as well as safe and efficient removal of oil and gas.

During reclamation, the removal of caliche is important to increasing the success of revegetating the site. Removed caliche that is free of contaminants may be used for road repairs, fire walls or for building other roads and locations. In order to operate the well or complete workover operations, it may be necessary to drive, park and operate on restored interim vegetation within the previously disturbed area. Disturbing revegetated areas for production or workover operations will be allowed. If there is significant disturbance and loss of vegetation, the area will need to be revegetated. Communicate with the appropriate BLM office for any exceptions/exemptions if needed.

All disturbed areas after they have been satisfactorily prepared need to be reseeded with the seed mixture provided below.

Upon completion of interim reclamation, the operator shall submit a Sundry Notices and Reports on Wells, Subsequent Report of Reclamation (Form 3160-5).

IX. FINAL ABANDONMENT & RECLAMATION

At final abandonment, well locations, production facilities, and access roads must undergo "final" reclamation so that the character and productivity of the land are restored.

Earthwork for final reclamation must be completed within six (6) months of well plugging. All pads, pits, facility locations and roads must be reclaimed to a satisfactory revegetated, safe, and stable condition, unless an agreement is made with the landowner or BLM to keep the road and/or pad intact.

After all disturbed areas have been satisfactorily prepared, these areas need to be revegetated with the seed mixture provided below. Seeding should be accomplished by drilling on the contour whenever practical or by other approved methods. Seeding may need to be repeated until revegetation is successful, as determined by the BLM.

Operators shall contact a BLM surface protection specialist prior to surface abandonment operations for site specific objectives (Jim Amos: 575-234-5909).

Ground-level Abandoned Well Marker to avoid raptor perching: Upon the plugging and subsequent abandonment of the well, the well marker will be installed at ground level on a plate containing the pertinent information for the plugged well.

Seed Mixture for LPC Sand/Shinnery Sites

Holder shall seed all disturbed areas with the seed mixture listed below. The seed mixture shall be planted in the amounts specified in pounds of pure live seed (PLS)* per acre. There shall be no primary or secondary noxious weeds in the seed mixture. Seed will be tested and the viability testing of seed shall be done in accordance with State law(s) and within nine (9) months prior to purchase. Commercial seed shall be either certified or registered seed. The seed container shall be tagged in accordance with State law(s) and available for inspection by the Authorized Officer.

Seed will be planted using a drill equipped with a depth regulator to ensure proper depth of planting where drilling is possible. The seed mixture will be evenly and uniformly planted over the disturbed area (smaller/heavier seeds have a tendency to drop the bottom of the drill and are planted first). Holder shall take appropriate measures to ensure this does not occur. Where drilling is not possible, seed will be broadcast and the area shall be raked or chained to cover the seed. When broadcasting the seed, the pounds per acre are to be doubled. Seeding shall be repeated until a satisfactory stand is established as determined by the Authorized Officer. Evaluation of growth may not be made before completion of at least one full growing season after seeding.

Species to be planted in pounds of pure live seed* per acre:

<u>Species</u>	<u>lb/acre</u>
Plains Bristlegrass	5lbs/A
Sand Bluestem	5lbs/A
Little Bluestem	3lbs/A
Big Bluestem	6lbs/A
Plains Coreopsis	2lbs/A
Sand Dropseed	1lbs/A

*Pounds of pure live seed:

Pounds of seed x percent purity x percent germination = pounds pure live seed



U.S. Department of the Interior
BUREAU OF LAND MANAGEMENT

Operator Certification Data Report

10/24/2019

Operator Certification

I hereby certify that I, or someone under my direct supervision, have inspected the drill site and access route proposed herein; that I am familiar with the conditions which currently exist; that I have full knowledge of state and Federal laws applicable to this operation; that the statements made in this APD package are, to the best of my knowledge, true and correct; and that the work associated with the operations proposed herein will be performed in conformity with this APD package and the terms and conditions under which it is approved. I also certify that I, or the company I represent, am responsible for the operations conducted under this application. These statements are

NAME: Kelly Kardos

Signed on: 06/03/2019

Title: Regulatory Coordinator

Street Address:

City:

State:

Zip:

Phone: (432)620-4374

Email address: kelly_kardos@xtoenergy.com

Field Representative

Representative Name:

Street Address:

City:

State:

Zip:

Phone:

Email address:



U.S. Department of the Interior
BUREAU OF LAND MANAGEMENT

Application Data Report

10/24/2019

APD ID: 10400042273

Submission Date: 06/03/2019

Highlighted data
reflects the most
recent changes
[Show Final Text](#)

Operator Name: XTO PERMIAN OPERATING LLC

Well Name: POKER LAKE UNIT 18 TWR

Well Number: 153H

Well Type: CONVENTIONAL GAS WELL

Well Work Type: Drill

Section 1 - General

APD ID: 10400042273

Tie to previous NOS? Y

Submission Date: 06/03/2019

BLM Office: CARLSBAD

User: Kelly Kardos

Title: Regulatory Coordinator

Federal/Indian APD: FED

Is the first lease penetrated for production Federal or Indian? FED

Lease number: NMNM0025533

Lease Acres: 324.37

Surface access agreement in place?

Allotted?

Reservation:

Agreement in place? YES

Federal or Indian agreement: FEDERAL

Agreement number: NMNM071016X

Agreement name:

Keep application confidential? NO

Permitting Agent? NO

APD Operator: XTO PERMIAN OPERATING LLC

Operator letter of designation:

Operator Info

Operator Organization Name: XTO PERMIAN OPERATING LLC

Operator Address: 6401 Holiday Hill Road, Bldg 5

Zip: 79707

Operator PO Box:

Operator City: Midland

State: TX

Operator Phone: (432)682-8873

Operator Internet Address:

Section 2 - Well Information

Well in Master Development Plan? NO

Master Development Plan name:

Well in Master SUPO? NO

Master SUPO name:

Well in Master Drilling Plan? NO

Master Drilling Plan name:

Well Name: POKER LAKE UNIT 18 TWR

Well Number: 153H

Well API Number:

Field/Pool or Exploratory? Field and Pool

Field Name: PURPLE SAGE
WOLFCAMP GAS

Pool Name:

Operator Name: XTO PERMIAN OPERATING LLC

Well Name: POKER LAKE UNIT 18 TWR

Well Number: 153H

Is the proposed well in an area containing other mineral resources? USEABLE WATER

Is the proposed well in a Helium production area? N Use Existing Well Pad? NO New surface disturbance?

Type of Well Pad: MULTIPLE WELL

Multiple Well Pad Name:

Number: 2

Well Class: HORIZONTAL

POKER LAKE UNIT 18 TWR

Number of Legs: 1

Well Work Type: Drill

Well Type: CONVENTIONAL GAS WELL

Describe Well Type:

Well sub-Type: DELINEATION

Describe sub-type:

Distance to town:

Distance to nearest well: 35 FT

Distance to lease line: 330 FT

Reservoir well spacing assigned acres Measurement: 640 Acres

Well plat: PLU_18_TWR_153H_C102_20191009133116.pdf

Well work start Date: 11/01/2019

Duration: 60 DAYS

Section 3 - Well Location Table

Survey Type: RECTANGULAR

Describe Survey Type:

Datum: NAD83

Vertical Datum: NAVD88

Survey number:

Reference Datum:

Wellbore	NS-Foot	NS Indicator	EW-Foot	EW Indicator	Twsp	Range	Section	Aliquot/Lot/Tract	Latitude	Longitude	County	State	Meridian	Lease Type	Lease Number	Elevation	MD	TVD	Will this well produce
	613	FNL	242 0	FWL	24S	31E	19	NENW 3	32.20838 3	- 103.8178 55	EDD Y	NEW MEXI	NEW MEXI	F	NMNM 002553	349 6	0	0	
	613	FNL	242 0	FWL	24S	31E	19	NENW 3	32.20838 3	- 103.8178 55	EDD Y	NEW MEXI	NEW MEXI	F	NMNM 002553	- 831 4	118 78	118 10	
	231 0	FSL	159 0	FWL	24S	31E	19	NESW 4	32.20098 4	- 103.8190 42	EDD Y	NEW MEXI	NEW MEXI	F	NMLC0 061705	- 893 5	154 69	124 31	

Operator Name: XTO PERMIAN OPERATING LLC

Well Name: POKER LAKE UNIT 18 TWR

Well Number: 153H

Wellbore	NS-Foot	NS Indicator	EW-Foot	EW Indicator	Twsp	Range	Section	Aliquot/Lot/Tract	Latitude	Longitude	County	State	Meridian	Lease Type	Lease Number	Elevation	MD	TVD	Will this well produce
	2310	FSL	1590	FWL	24S	31E	19	NESW 4	32.200984	-103.819042	EDD Y	NEW MEXI	NEW MEXI	F	NMLC0061705	-8935	15469	12431	
	2310	FSL	1590	FWL	24S	31E	19	NESW 4	32.200984	-103.819042	EDD Y	NEW MEXI	NEW MEXI	F	NMLC0061705	-8935	15469	12431	
	330	FNL	1590	FWL	24S	31E	19	NENW	32.20916	-103.820538	EDD Y	NEW MEXI	NEW MEXI	F	NMNM002553	-8935	12829	12431	
	330	FNL	1590	FWL	24S	31E	19	NENW	32.20916	-103.820538	EDD Y	NEW MEXI	NEW MEXI	F	NMNM002553	-8935	12829	12431	
	330	FNL	1590	FWL	24S	31E	19	NENW	32.20916	-103.820538	EDD Y	NEW MEXI	NEW MEXI	F	NMNM002553	-8935	12829	12431	
	330	FSL	1590	FWL	24S	31E	30	SESW 5	32.181925	-103.820564	EDD Y	NEW MEXI	NEW MEXI	F	NMNM000050	-8935	22737	12431	
	200	FSL	1590	FWL	24S	31E	30	SESW 7	32.181567	-103.820564	EDD Y	NEW MEXI	NEW MEXI	F	NMNM000050	-8935	22867	12431	



APD ID: 10400042273

Submission Date: 06/03/2019

Highlighted data
reflects the most
recent changes

Operator Name: XTO PERMIAN OPERATING LLC

Well Name: POKER LAKE UNIT 18 TWR

Well Number: 153H

[Show Final Text](#)

Well Type: CONVENTIONAL GAS WELL

Well Work Type: Drill

Section 1 - Geologic Formations

Formation ID	Formation Name	Elevation	True Vertical Depth	Measured Depth	Lithologies	Mineral Resources	Producing Formation
1	PERMIAN	3496	0	0	OTHER : Quaternary	NONE	N
2	RUSTLER	2975	521	521	SILTSTONE	USEABLE WATER	N
3	TOP SALT	2594	902	902	SALT	OTHER : Produced Water	N
4	BASE OF SALT	-515	4011	4011	SALT	OTHER : Produced Water	N
5	DELAWARE	-782	4278	4278	SANDSTONE	OTHER,NATURAL GAS,OIL : Produced	N
6	BONE SPRING	-4615	8111	8111	SANDSTONE	OTHER,NATURAL GAS,OIL : Produced	N
7	BONE SPRING 1ST	-5598	9094	9094	SANDSTONE	OTHER,NATURAL GAS,OIL : Produced	N
8	BONE SPRING 2ND	-6396	9892	9892	SANDSTONE	OTHER,NATURAL GAS,OIL : Produced	N
9	BONE SPRING 3RD	-7541	11037	11037	SANDSTONE	OTHER,NATURAL GAS,OIL : Produced	N
10	WOLFCAMP	-7915	11411	11411	SHALE	OTHER,NATURAL GAS,OIL : Produced	Y

Section 2 - Blowout Prevention

Pressure Rating (PSI): 10M

Rating Depth: 12431

Equipment: The blow out preventer equipment (BOP) on surface casing temporary wellhead will consist of a 21-1/4" minimum 2M Hydril. MASP should not exceed 1245 psi. Once the permanent wellhead is installed the blow out preventer equipment (BOP) for this well consists of a 13-5/8" minimum 10M Hydril and a 13-5/8" minimum 10M Double Ram BOP. MASP should not exceed 5345 psi.

Requesting Variance? YES

Variance request: XTO requests to utilize centralizers only in the curve after the KOP and only a minimum of one every other joint. 13-3/8" Collapse analyzed using 50% evacuation based on regional experience. 9-5/8" Collapse analyzed using 50% evacuation based on regional experience. 5-1/2" tension calculated using vertical hanging weight plus the lateral weight multiplied by a friction factor of 0.35 Permanent Wellhead – GE RSH Multibowl System A. Starting Head (RSH System): 13-3/8" SOW bottom x 13-5/8" 5M top flange B. Tubing Head: 13-5/8" 5M bottom flange x 7-1/16" 10M top flange A variance is requested to allow use of a flex hose as the choke line from the BOP to the Choke Manifold. If this hose is used, a copy of the

Operator Name: XTO PERMIAN OPERATING LLC

Well Name: POKER LAKE UNIT 18 TWR

Well Number: 153H

manufacturer's certification and pressure test chart will be kept on the rig. Attached is an example of a certification and pressure test chart. The manufacturer does not require anchors.

Testing Procedure: All BOP testing will be done by an independent service company. Annular pressure tests will be limited to 50% of the working pressure. When nipping up on the 13-5/8" 10M bradenhead and flange, the BOP test will be limited to 10000 psi. When the 13-3/8" and 9-5/8" casing is set, the packoff seals will be tested to a minimum of 10000 psi. All BOP tests will include a low pressure test as per BLM regulations. The 10M BOP diagrams are attached. Blind rams will be functioned tested each trip, pipe rams will be functioned tested each day.

Choke Diagram Attachment:

PLU_18_TWR_2M3MCM_20190523130558.pdf

PLU_18_TWR_10MCM_20190529080507.pdf

BOP Diagram Attachment:

PLU_18_TWR_Multi_20190523130747.pdf

PLU_18_TWR_2MBOP_20190528101103.pdf

PLU_18_TWR_10MBOP_20190529080520.pdf

Section 3 - Casing

Casing ID	String Type	Hole Size	Csg Size	Condition	Standard	Tapered String	Top Set MD	Bottom Set MD	Top Set TVD	Bottom Set TVD	Top Set MSL	Bottom Set MSL	Calculated casing	Grade	Weight	Joint Type	Collapse SF	Burst SF	Joint SF Type	Joint SF	Body SF Type	Body SF
1	SURFACE	24	18.625	NEW	API	N	0	700	0	700			700	J-55	87.5	BUTT	1.99	1.81	DRY	22.44	DRY	22.44
2	INTERMEDIATE	17.5	13.375	NEW	API	N	0	4150	0	4150			4150	HCL-80	68	BUTT	2.31	1.67	DRY	10.41	DRY	10.41
3	INTERMEDIATE	12.25	9.625	NEW	API	N	0	11407	0	11407			11407	HCL-80	40	BUTT	1.27	1.03	BUOY	2.77	DRY	2.77
4	PRODUCTION	8.75	5.5	NEW	API	N	0	22867	0	12431			22867	P-110	17	BUTT	1.39	1.01	DRY	2.04	DRY	2.04

Casing Attachments

Operator Name: XTO PERMIAN OPERATING LLC

Well Name: POKER LAKE UNIT 18 TWR

Well Number: 153H

Casing Attachments

Casing ID: 1 **String Type:** SURFACE

Inspection Document:

Spec Document:

Tapered String Spec:

Casing Design Assumptions and Worksheet(s):

PLU_18_TWR_153H_Csg_20191010070255.pdf

Casing ID: 2 **String Type:** INTERMEDIATE

Inspection Document:

Spec Document:

Tapered String Spec:

Casing Design Assumptions and Worksheet(s):

PLU_18_TWR_153H_Csg_20191010070309.pdf

Casing ID: 3 **String Type:** INTERMEDIATE

Inspection Document:

Spec Document:

Tapered String Spec:

Casing Design Assumptions and Worksheet(s):

PLU_18_TWR_153H_Csg_20191010070324.pdf

Operator Name: XTO PERMIAN OPERATING LLC

Well Name: POKER LAKE UNIT 18 TWR

Well Number: 153H

Casing Attachments

Casing ID: 4 String Type: PRODUCTION

Inspection Document:

Spec Document:

Tapered String Spec:

Casing Design Assumptions and Worksheet(s):

PLU_18_TWR_153H_Csg_20191010070334.pdf

Section 4 - Cement

String Type	Lead/Tail	Stage Tool	Top MD	Bottom MD	Quantity(sx)	Yield	Density	Cu Ft	Excess%	Cement type	Additives
SURFACE	Lead		0	700	560	1.87	12.8	1047.2	100	EconoCem-HLTRRC	None
SURFACE	Tail				550	1.35	14.8	742.5	100	HalCem-C	2% CaCl
INTERMEDIATE	Lead		0	4150	2450	1.88	12.8	4606	100	HalCem-C	2% CaCl
INTERMEDIATE	Tail				850	1.35	14.8	1147.5	100	HalCem-C	2% CaCl
INTERMEDIATE	Lead	4200	0	11407	1130	1.87	12.8	2113.1	100	HalCem-C	2% CaCl
INTERMEDIATE	Tail				390	1.35	14.8	526.5	100	HalCem-C	2% CaCl
INTERMEDIATE	Lead		4250	11407	2050	1.88	12.8	3854	100	HalCem-C	2% CaCl
INTERMEDIATE	Tail				470	1.33	14.8	625.1	100	HalCem-C	2% CaCl
PRODUCTION	Lead		0	22867	1830	1.88	11.5	3440.4	20	HalCem-C	2% CaCl
PRODUCTION	Tail				2610	1.33	13.2	3471.3	20	VersaCem	None

Operator Name: XTO PERMIAN OPERATING LLC

Well Name: POKER LAKE UNIT 18 TWR

Well Number: 153H

Section 5 - Circulating Medium

Mud System Type: Closed

Will an air or gas system be Used? NO

Description of the equipment for the circulating system in accordance with Onshore Order #2:

Diagram of the equipment for the circulating system in accordance with Onshore Order #2:

Describe what will be on location to control well or mitigate other conditions: The necessary mud products for weight addition and fluid loss control will be on location at all times.

Describe the mud monitoring system utilized: A Pason or Totco will be used to detect changes in loss or gain of mud volume.

Circulating Medium Table

Top Depth	Bottom Depth	Mud Type	Min Weight (lbs/gal)	Max Weight (lbs/gal)	Density (lbs/cu ft)	Gel Strength (lbs/100 sqft)	PH	Viscosity (CP)	Salinity (ppm)	Filtration (cc)	Additional Characteristics
1140 7	1243 1	OTHER : FW / Cut Brine / Poly / OBM	12.2	12.8							A mud test will be performed every 24 hours to determine: density, viscosity, strength, filtration and pH as necessary. Use available solids controls equipment to help keep mud weight down after mud up. Rig up solids control equipment to operate as a closed loop system
4150	1140 7	OTHER : FW / Cut Brine	9.1	9.5							A mud test will be performed every 24 hours to determine: density, viscosity, strength, filtration and pH as necessary. Use available solids controls equipment to help keep mud weight down after mud up. Rig up solids control equipment to operate as a closed loop system
0	700	OTHER : FW/Native	8.4	8.8							A mud test will be performed every 24 hours to determine: density, viscosity, strength, filtration and pH as necessary. Use available

Operator Name: XTO PERMIAN OPERATING LLC

Well Name: POKER LAKE UNIT 18 TWR

Well Number: 153H

Top Depth	Bottom Depth	Mud Type	Min Weight (lbs/gal)	Max Weight (lbs/gal)	Density (lbs/cu ft)	Gel Strength (lbs/100 sqft)	PH	Viscosity (CP)	Salinity (ppm)	Filtration (cc)	Additional Characteristics
											solids controls equipment to help keep mud weight down after mud up. Rig up solids control equipment to operate as a closed loop system
700	4150	OTHER : Brine/Gel Sweeps	9.8	10.2							A mud test will be performed every 24 hours to determine: density, viscosity, strength, filtration and pH as necessary. Use available solids controls equipment to help keep mud weight down after mud up. Rig up solids control equipment to operate as a closed loop system

Section 6 - Test, Logging, Coring

List of production tests including testing procedures, equipment and safety measures:

Open hole logging to include Density/Neutron/PE/Dual Laterlog/Spectral Gamma from kick-off point to intermediate casing shoe.

List of open and cased hole logs run in the well:

CBL,CNL,DS,GR,MUDLOG

Coring operation description for the well:

No coring will take place on this well.

Section 7 - Pressure

Anticipated Bottom Hole Pressure: 8080

Anticipated Surface Pressure: 5345.18

Anticipated Bottom Hole Temperature(F): 170

Anticipated abnormal pressures, temperatures, or potential geologic hazards? NO

Describe:

Potential loss of circulation through the Capitan Reef.

Contingency Plans geohazards description:

The necessary mud products for weight addition and fluid loss control will be on location at all times. A Pason or Totco will be used to detect changes in loss or gain of mud volume. A mud test will be performed every 24 hours to determine: density, viscosity, strength, filtration and pH as necessary. Use available solids controls equipment to help keep mud weight down

Operator Name: XTO PERMIAN OPERATING LLC

Well Name: POKER LAKE UNIT 18 TWR

Well Number: 153H

after mud up. Rig up solids control equipment to operate as a closed loop system. Lost circulation could occur but is not expected to be a serious problem in this area and hole seepage will be compensated for by additions of small amounts of LCM in the drilling fluid.

Contingency Plans geohazards attachment:

Hydrogen Sulfide drilling operations plan required? YES

Hydrogen sulfide drilling operations plan:

PLU_18_TWR_H2S_DiaE_20190523132628.pdf

PLU_18_TWR_H2S_DiaW_20190523132638.pdf

PLU_18_TWR_H2S_Plan_20190523132617.pdf

Section 8 - Other Information

Proposed horizontal/directional/multi-lateral plan submission:

PLU_18_TWR_153H_DD_20191010070546.pdf

Other proposed operations facets description:

The surface fresh water sands will be protected by setting 18-5/8 inch casing @ 700' (202' above the salt) and circulating cement back to surface. The salt will be isolated by setting 13-3/8 inch casing at 4150' and circulating cement to surface. A 12-1/4 inch vertical hole will be drilled to 11407' and 9-5/8 inch casing ran and cemented 500' into the 13-3/8 inch casing. An 8-3/4 inch curve and lateral hole will be drilled to MD/TD and 5-1/2 casing will be set at TD and cemented back 300' into the 9-5/8 inch casing shoe.

Other proposed operations facets attachment:

PLU_18_TWR_GCPE_20191010070641.pdf

PLU_18_TWR_GCPW_20191010070653.pdf

Other Variance attachment:

PLU_18_TWR_FH_20190523132910.pdf

PLU_18_TWR_WWC_20191010070821.pdf



XTO Energy

Eddy County, NM (NAD-27)

Poker Lake Unit 18 TWR

#153H

OH

Plan: PERMIT

Standard Planning Report

07 October, 2019



Project: Eddy County, NM (NAD-27)
Site: Poker Lake Unit 18 TWR
Well: #153H
Wellbore: OH
Design: PERMIT

PROJECT DETAILS: Eddy County, NM (NAD-27)
Geodetic System: US State Plane 1927 (Exact solution)
Datum: NAD 1927 (NADCON CONUS)
Ellipsoid: Clarke 1866
Zone: New Mexico East 3001
System Datum: Mean Sea Level

WELL DETAILS: #153H

Rig Name: REF GL @ 3496.00usft
Ground Level: 3496.00
+N/-S +E/-W Northing Easting Latitude Longitude
0.00 0.00 439867.40 659584.20 32.208260 -103.817370

DESIGN TARGET DETAILS

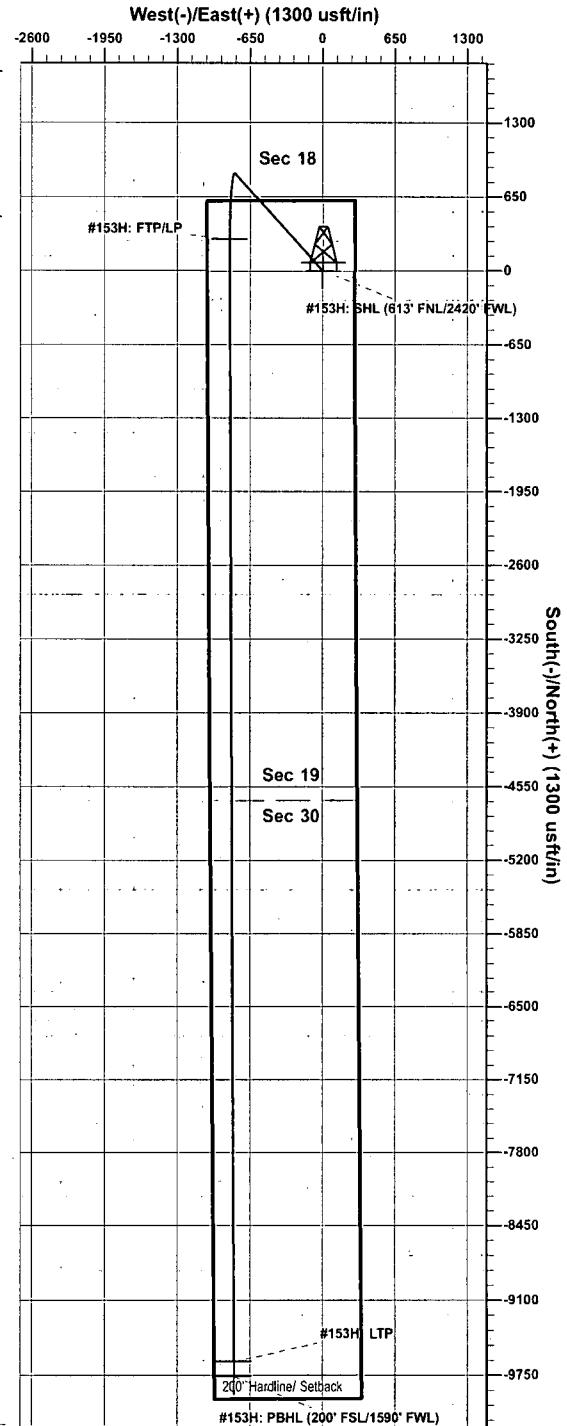
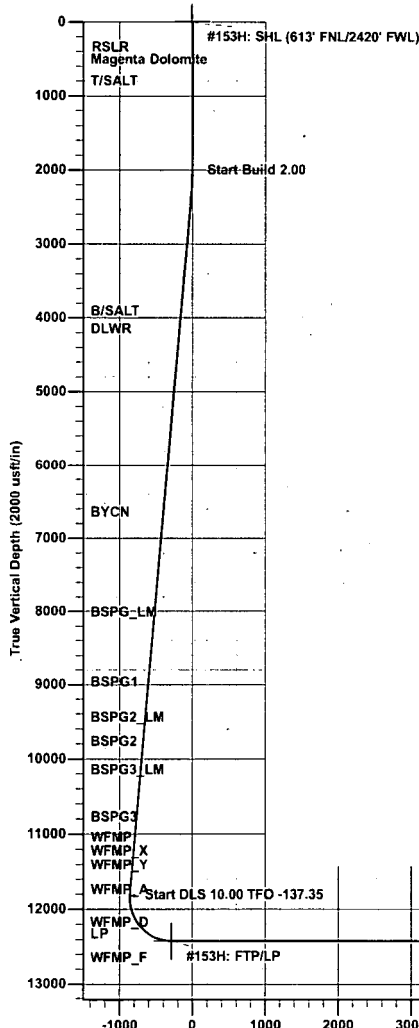
Name	TVD	+N/-S	+E/-W	Northing	Easting	Latitude	Longitude	Shape
#153H: SHL (613' FNL/2420' FWL)	0.00	0.00	0.00	439867.40	659584.20	32.208260	-103.817370	Point
#153H: FTP/LP	12431.00	278.82	-831.45	440146.20	658752.80	32.209037	-103.820054	Point
#153H: LTP	12431.00	-9629.69	-792.55	430238.30	658791.70	32.181801	-103.820081	Point
#153H: PBHL (200' FSL/1590' FWL)	12431.00	-9759.70	-792.05	430108.30	658792.20	32.181443	-103.820081	Point

SECTION DETAILS

Sec	MD	Inc	Azi	TVD	+N/-S	+E/-W	Dleg	TFace	VSec
1	0.00	0.00	0.00	0.00	0.00	0.00	0.00	0.00	0.00
2	2000.00	0.00	0.00	2000.00	0.00	0.00	0.00	0.00	0.00
3	2341.89	6.84	317.33	2341.08	14.98	-13.81	2.00	317.33	-15.03
4	11878.38	6.84	317.33	11809.74	849.75	-783.41	0.00	0.00	-852.75
5	12826.76	80.00	179.78	12431.00	278.82	-831.45	10.00	-137.35	-262.01
6	22737.37	80.00	179.78	12431.00	-9629.69	-792.55	0.00	0.00	8626.68
7	22867.38	80.00	179.78	12431.00	-9759.70	-792.05	0.00	0.00	9756.59

FORMATION TOP DETAILS

TVDPATH	Formation
521.00	RSR
606.00	Magenta Dolomite
902.00	T/SALT
4011.00	B/SALT
4252.00	DLWR
6746.00	BYCN
8111.00	BSPG LM
9068.00	BSPG1
9546.00	BSPG2 LM
9866.00	BSPG2
10246.00	BSPG3 LM
11011.00	BSPG3
11411.00	WFMP
11446.00	WFMP_X
11521.00	WFMP_Y
11571.00	WFMP_A
12371.00	WFMP_D
12431.00	LP



The customer should only rely on this document after independently verifying all paths, targets, coordinates, lease and hard lines represented. Any decisions made or wells drilled utilizing this or any other information supplied by Prototype are at the sole risk and responsibility of the user.

Vertical Section at 179.78° (2000 usft/in)

Plan: PERMIT (#153H/OH)

Created By: Matthew May Date: 16:47, October 07 2019



Prototype Well Planning LLC
Planning Report

Database:	EDM 5000.1 Single User Db	Local Co-ordinate Reference:	Well #153H
Company:	XTO Energy	TVD Reference:	REF GL @ 3496.00usft
Project:	Eddy County, NM (NAD-27)	MD Reference:	REF GL @ 3496.00usft
Site:	Poker Lake Unit 18 TWR	North Reference:	Grid
Well:	#153H	Survey Calculation Method:	Minimum Curvature
Wellbore:	OH		
Design:	PERMIT		

Project	Eddy County, NM (NAD-27)		
Map System:	US State Plane 1927 (Exact solution)	System Datum:	Mean Sea Level
Geo Datum:	NAD 1927 (NADCON CONUS)		
Map Zone:	New Mexico East 3001		Using geodetic scale factor

Site	Poker Lake Unit 18 TWR		
Site Position:		Northing:	439,832.40 usft
From:	Map	Easting:	659,584.30 usft
Position Uncertainty:	0.00 usft	Slot Radius:	13-3/16 "
		Grid Convergence:	0.28 °

Well	#153H		
Well Position	+N/-S	35.00 usft	Northing:
	+E/-W	-0.10 usft	Easting:
Position Uncertainty	0.00 usft	Wellhead Elevation:	0.00 usft
		Ground Level:	3,496.00 usft

Wellbore	OH		
Magnetics	Model Name	Sample Date	Declination
			(°)
	IGRF2015	10/7/2019	6.82
			Dip Angle
			(°)
			Field Strength
			(nT)
			47,666

Design	PERMIT		
Audit Notes:			
Version:	Phase:	PLAN	Tie On Depth:
			0.00
Vertical Section:	Depth From (TVD)	+N/-S	+E/-W
	(usft)	(usft)	(usft)
	0.00	0.00	0.00
			Direction
			(°)
			179.78

Plan Sections										
Measured Depth (usft)	Inclination (°)	Azimuth (°)	Vertical Depth (usft)	+N/-S (usft)	+E/-W (usft)	Dogleg Rate (°/100usft)	Build Rate (°/100usft)	Turn Rate (°/100usft)	TFO (°)	Target
0.00	0.00	0.00	0.00	0.00	0.00	0.00	0.00	0.00	0.00	
2,000.00	0.00	0.00	2,000.00	0.00	0.00	0.00	0.00	0.00	0.00	
2,341.89	6.84	317.33	2,341.08	14.98	-13.81	2.00	2.00	0.00	317.33	
11,878.38	6.84	317.33	11,809.74	849.75	-783.41	0.00	0.00	0.00	0.00	
12,828.78	90.00	179.78	12,431.00	278.82	-831.45	10.00	8.75	-14.47	-137.35	#153H: FTP/LP
22,737.37	90.00	179.78	12,431.00	-9,629.69	-792.56	0.00	0.00	0.00	0.00	#153H: LTP
22,867.38	90.00	179.78	12,431.00	-9,759.70	-792.05	0.00	0.00	0.00	0.00	#153H: PBHL (200' F:



Prototype Well Planning LLC

Planning Report

Database:	EDM 5000.1 Single User Db	Local Co-ordinate Reference:	Well #153H
Company:	XTO Energy	TVD Reference:	REF GL @ 3496.00usft
Project:	Eddy County, NM (NAD-27)	MD Reference:	REF GL @ 3496.00usft
Site:	Poker Lake Unit 18 TWR	North Reference:	Grid
Well:	#153H	Survey Calculation Method:	Minimum Curvature
Wellbore:	OH		
Design:	PERMIT		

Planned Survey									
Measured Depth (usft)	Inclination (°)	Azimuth (°)	Vertical Depth (usft)	+N/-S (usft)	+E/-W (usft)	Vertical Section (usft)	Dogleg Rate (°/100usft)	Build Rate (°/100usft)	Turn Rate (°/100usft)
0.00	0.00	0.00	0.00	0.00	0.00	0.00	0.00	0.00	0.00
100.00	0.00	0.00	100.00	0.00	0.00	0.00	0.00	0.00	0.00
200.00	0.00	0.00	200.00	0.00	0.00	0.00	0.00	0.00	0.00
300.00	0.00	0.00	300.00	0.00	0.00	0.00	0.00	0.00	0.00
400.00	0.00	0.00	400.00	0.00	0.00	0.00	0.00	0.00	0.00
500.00	0.00	0.00	500.00	0.00	0.00	0.00	0.00	0.00	0.00
521.00	0.00	0.00	521.00	0.00	0.00	0.00	0.00	0.00	0.00
RSLR									
600.00	0.00	0.00	600.00	0.00	0.00	0.00	0.00	0.00	0.00
606.00	0.00	0.00	606.00	0.00	0.00	0.00	0.00	0.00	0.00
Magenta Dolomite									
700.00	0.00	0.00	700.00	0.00	0.00	0.00	0.00	0.00	0.00
800.00	0.00	0.00	800.00	0.00	0.00	0.00	0.00	0.00	0.00
900.00	0.00	0.00	900.00	0.00	0.00	0.00	0.00	0.00	0.00
902.00	0.00	0.00	902.00	0.00	0.00	0.00	0.00	0.00	0.00
T/SALT									
1,000.00	0.00	0.00	1,000.00	0.00	0.00	0.00	0.00	0.00	0.00
1,100.00	0.00	0.00	1,100.00	0.00	0.00	0.00	0.00	0.00	0.00
1,200.00	0.00	0.00	1,200.00	0.00	0.00	0.00	0.00	0.00	0.00
1,300.00	0.00	0.00	1,300.00	0.00	0.00	0.00	0.00	0.00	0.00
1,400.00	0.00	0.00	1,400.00	0.00	0.00	0.00	0.00	0.00	0.00
1,500.00	0.00	0.00	1,500.00	0.00	0.00	0.00	0.00	0.00	0.00
1,600.00	0.00	0.00	1,600.00	0.00	0.00	0.00	0.00	0.00	0.00
1,700.00	0.00	0.00	1,700.00	0.00	0.00	0.00	0.00	0.00	0.00
1,800.00	0.00	0.00	1,800.00	0.00	0.00	0.00	0.00	0.00	0.00
1,900.00	0.00	0.00	1,900.00	0.00	0.00	0.00	0.00	0.00	0.00
2,000.00	0.00	0.00	2,000.00	0.00	0.00	0.00	0.00	0.00	0.00
2,100.00	2.00	317.33	2,099.98	1.28	-1.18	-1.29	2.00	2.00	0.00
2,200.00	4.00	317.33	2,199.84	5.13	-4.73	-5.15	2.00	2.00	0.00
2,300.00	6.00	317.33	2,299.45	11.54	-10.64	-11.58	2.00	2.00	0.00
2,341.89	6.84	317.33	2,341.08	14.98	-13.81	-15.03	2.00	2.00	0.00
2,400.00	6.84	317.33	2,398.78	20.07	-18.50	-20.14	0.00	0.00	0.00
2,500.00	6.84	317.33	2,498.06	28.82	-26.57	-28.92	0.00	0.00	0.00
2,600.00	6.84	317.33	2,597.35	37.57	-34.64	-37.71	0.00	0.00	0.00
2,700.00	6.84	317.33	2,696.64	46.33	-42.71	-46.49	0.00	0.00	0.00
2,800.00	6.84	317.33	2,795.93	55.08	-50.78	-55.28	0.00	0.00	0.00
2,900.00	6.84	317.33	2,895.22	63.84	-58.85	-64.06	0.00	0.00	0.00
3,000.00	6.84	317.33	2,994.51	72.59	-66.92	-72.85	0.00	0.00	0.00
3,100.00	6.84	317.33	3,093.80	81.34	-74.99	-81.63	0.00	0.00	0.00
3,200.00	6.84	317.33	3,193.09	90.10	-83.06	-90.41	0.00	0.00	0.00
3,300.00	6.84	317.33	3,292.37	98.85	-91.13	-99.20	0.00	0.00	0.00
3,400.00	6.84	317.33	3,391.66	107.60	-99.20	-107.98	0.00	0.00	0.00
3,500.00	6.84	317.33	3,490.95	116.36	-107.27	-116.77	0.00	0.00	0.00
3,600.00	6.84	317.33	3,590.24	125.11	-115.34	-125.55	0.00	0.00	0.00
3,700.00	6.84	317.33	3,689.53	133.86	-123.41	-134.34	0.00	0.00	0.00
3,800.00	6.84	317.33	3,788.82	142.62	-131.48	-143.12	0.00	0.00	0.00
3,900.00	6.84	317.33	3,888.11	151.37	-139.55	-151.90	0.00	0.00	0.00
4,000.00	6.84	317.33	3,987.40	160.12	-147.62	-160.69	0.00	0.00	0.00
4,023.77	6.84	317.33	4,011.00	162.20	-149.54	-162.78	0.00	0.00	0.00
B/SALT									
4,100.00	6.84	317.33	4,086.68	168.88	-155.69	-169.47	0.00	0.00	0.00
4,200.00	6.84	317.33	4,185.97	177.63	-163.76	-178.26	0.00	0.00	0.00
4,266.50	6.84	317.33	4,252.00	183.45	-169.13	-184.10	0.00	0.00	0.00
DLWR									



Prototype Well Planning LLC Planning Report

Database:	EDM 5000.1 Single User Db	Local Co-ordinate Reference:	Well #153H
Company:	XTO Energy	TVD Reference:	REF GL @ 3496.00usft
Project:	Eddy County, NM (NAD-27)	MD Reference:	REF GL @ 3496.00usft
Site:	Poker Lake Unit 18 TWR	North Reference:	Grid
Well:	#153H	Survey Calculation Method:	Minimum Curvature
Wellbore:	OH		
Design:	PERMIT		

Planned Survey

Measured Depth (usft)	Inclination (°)	Azimuth (°)	Vertical Depth (usft)	+N/-S (usft)	+E/-W (usft)	Vertical Section (usft)	Dogleg Rate (°/100usft)	Build Rate (°/100usft)	Turn Rate (°/100usft)
4,300.00	6.84	317.33	4,285.26	186.38	-171.83	-187.04	0.00	0.00	0.00
4,400.00	6.84	317.33	4,384.55	195.14	-179.90	-195.83	0.00	0.00	0.00
4,500.00	6.84	317.33	4,483.84	203.89	-187.97	-204.61	0.00	0.00	0.00
4,600.00	6.84	317.33	4,583.13	212.64	-196.04	-213.40	0.00	0.00	0.00
4,700.00	6.84	317.33	4,682.42	221.40	-204.11	-222.18	0.00	0.00	0.00
4,800.00	6.84	317.33	4,781.71	230.15	-212.18	-230.96	0.00	0.00	0.00
4,900.00	6.84	317.33	4,880.99	238.90	-220.25	-239.75	0.00	0.00	0.00
5,000.00	6.84	317.33	4,980.28	247.66	-228.32	-248.53	0.00	0.00	0.00
5,100.00	6.84	317.33	5,079.57	256.41	-236.39	-257.32	0.00	0.00	0.00
5,200.00	6.84	317.33	5,178.86	265.16	-244.46	-266.10	0.00	0.00	0.00
5,300.00	6.84	317.33	5,278.15	273.92	-252.53	-274.89	0.00	0.00	0.00
5,400.00	6.84	317.33	5,377.44	282.67	-260.60	-283.67	0.00	0.00	0.00
5,500.00	6.84	317.33	5,476.73	291.42	-268.67	-292.45	0.00	0.00	0.00
5,600.00	6.84	317.33	5,576.02	300.18	-276.74	-301.24	0.00	0.00	0.00
5,700.00	6.84	317.33	5,675.30	308.93	-284.81	-310.02	0.00	0.00	0.00
5,800.00	6.84	317.33	5,774.59	317.69	-292.88	-318.81	0.00	0.00	0.00
5,900.00	6.84	317.33	5,873.88	326.44	-300.95	-327.59	0.00	0.00	0.00
6,000.00	6.84	317.33	5,973.17	335.19	-309.02	-336.38	0.00	0.00	0.00
6,100.00	6.84	317.33	6,072.46	343.95	-317.09	-345.16	0.00	0.00	0.00
6,200.00	6.84	317.33	6,171.75	352.70	-325.16	-353.94	0.00	0.00	0.00
6,300.00	6.84	317.33	6,271.04	361.45	-333.23	-362.73	0.00	0.00	0.00
6,400.00	6.84	317.33	6,370.32	370.21	-341.30	-371.51	0.00	0.00	0.00
6,500.00	6.84	317.33	6,469.61	378.96	-349.37	-380.30	0.00	0.00	0.00
6,600.00	6.84	317.33	6,568.90	387.71	-357.44	-389.08	0.00	0.00	0.00
6,700.00	6.84	317.33	6,668.19	396.47	-365.51	-397.87	0.00	0.00	0.00
6,778.37	6.84	317.33	6,746.00	403.33	-371.84	-404.75	0.00	0.00	0.00
BYCN									
6,800.00	6.84	317.33	6,767.48	405.22	-373.58	-406.65	0.00	0.00	0.00
6,900.00	6.84	317.33	6,866.77	413.97	-381.65	-415.44	0.00	0.00	0.00
7,000.00	6.84	317.33	6,966.06	422.73	-389.72	-424.22	0.00	0.00	0.00
7,100.00	6.84	317.33	7,065.35	431.48	-397.79	-433.00	0.00	0.00	0.00
7,200.00	6.84	317.33	7,164.63	440.23	-405.86	-441.79	0.00	0.00	0.00
7,300.00	6.84	317.33	7,263.92	448.99	-413.93	-450.57	0.00	0.00	0.00
7,400.00	6.84	317.33	7,363.21	457.74	-422.00	-459.36	0.00	0.00	0.00
7,500.00	6.84	317.33	7,462.50	466.49	-430.07	-468.14	0.00	0.00	0.00
7,600.00	6.84	317.33	7,561.79	475.25	-438.14	-476.93	0.00	0.00	0.00
7,700.00	6.84	317.33	7,661.08	484.00	-446.21	-485.71	0.00	0.00	0.00
7,800.00	6.84	317.33	7,760.37	492.75	-454.28	-494.49	0.00	0.00	0.00
7,900.00	6.84	317.33	7,859.66	501.51	-462.35	-503.28	0.00	0.00	0.00
8,000.00	6.84	317.33	7,958.94	510.26	-470.42	-512.06	0.00	0.00	0.00
8,100.00	6.84	317.33	8,058.23	519.01	-478.49	-520.85	0.00	0.00	0.00
8,153.15	6.84	317.33	8,111.00	523.67	-482.78	-525.52	0.00	0.00	0.00
BSPG_LM									
8,200.00	6.84	317.33	8,157.52	527.77	-486.56	-529.63	0.00	0.00	0.00
8,300.00	6.84	317.33	8,256.81	536.52	-494.63	-538.42	0.00	0.00	0.00
8,400.00	6.84	317.33	8,356.10	545.27	-502.70	-547.20	0.00	0.00	0.00
8,500.00	6.84	317.33	8,455.39	554.03	-510.77	-555.99	0.00	0.00	0.00
8,600.00	6.84	317.33	8,554.68	562.78	-518.84	-564.77	0.00	0.00	0.00
8,700.00	6.84	317.33	8,653.97	571.54	-526.91	-573.55	0.00	0.00	0.00
8,800.00	6.84	317.33	8,753.25	580.29	-534.99	-582.34	0.00	0.00	0.00
8,900.00	6.84	317.33	8,852.54	589.04	-543.06	-591.12	0.00	0.00	0.00
9,000.00	6.84	317.33	8,951.83	597.80	-551.13	-599.91	0.00	0.00	0.00
9,100.00	6.84	317.33	9,051.12	606.55	-559.20	-608.69	0.00	0.00	0.00



Prototype Well Planning LLC Planning Report

Database:	EDM 5000.1 Single User Db	Local Co-ordinate Reference:	Well #153H
Company:	XTO Energy	TVD Reference:	REF GL @ 3496.00usft
Project:	Eddy County, NM (NAD-27)	MD Reference:	REF GL @ 3496.00usft
Site:	Poker Lake Unit 18 TWR	North Reference:	Grid
Well:	#153H	Survey Calculation Method:	Minimum Curvature
Wellbore:	OH		
Design:	PERMIT		

Planned Survey

Measured Depth (usft)	Inclination (°)	Azimuth (°)	Vertical Depth (usft)	+N/-S (usft)	+E/-W (usft)	Vertical Section (usft)	Dogleg Rate (°/100usft)	Build Rate (°/100usft)	Turn Rate (°/100usft)
9,117.00	6.84	317.33	9,068.00	608.04	-560.57	-610.18	0.00	0.00	0.00
BSPG1									
9,200.00	6.84	317.33	9,150.41	615.30	-567.27	-617.48	0.00	0.00	0.00
9,300.00	6.84	317.33	9,249.70	624.06	-575.34	-626.26	0.00	0.00	0.00
9,400.00	6.84	317.33	9,348.99	632.81	-583.41	-635.04	0.00	0.00	0.00
9,500.00	6.84	317.33	9,448.28	641.56	-591.48	-643.83	0.00	0.00	0.00
9,598.42	6.84	317.33	9,546.00	650.18	-599.42	-652.47	0.00	0.00	0.00
BSPG2_LM									
9,600.00	6.84	317.33	9,547.56	650.32	-599.55	-652.61	0.00	0.00	0.00
9,700.00	6.84	317.33	9,646.85	659.07	-607.62	-661.40	0.00	0.00	0.00
9,800.00	6.84	317.33	9,746.14	667.82	-615.69	-670.18	0.00	0.00	0.00
9,900.00	6.84	317.33	9,845.43	676.58	-623.76	-678.97	0.00	0.00	0.00
9,920.72	6.84	317.33	9,866.00	678.39	-625.43	-680.79	0.00	0.00	0.00
BSPG2									
10,000.00	6.84	317.33	9,944.72	685.33	-631.83	-687.75	0.00	0.00	0.00
10,100.00	6.84	317.33	10,044.01	694.08	-639.90	-696.54	0.00	0.00	0.00
10,200.00	6.84	317.33	10,143.30	702.84	-647.97	-705.32	0.00	0.00	0.00
10,300.00	6.84	317.33	10,242.59	711.59	-656.04	-714.10	0.00	0.00	0.00
10,303.44	6.84	317.33	10,246.00	711.89	-656.31	-714.41	0.00	0.00	0.00
BSPG3_LM									
10,400.00	6.84	317.33	10,341.87	720.34	-664.11	-722.89	0.00	0.00	0.00
10,500.00	6.84	317.33	10,441.16	729.10	-672.18	-731.67	0.00	0.00	0.00
10,600.00	6.84	317.33	10,540.45	737.85	-680.25	-740.46	0.00	0.00	0.00
10,700.00	6.84	317.33	10,639.74	746.60	-688.32	-749.24	0.00	0.00	0.00
10,800.00	6.84	317.33	10,739.03	755.36	-696.39	-758.03	0.00	0.00	0.00
10,900.00	6.84	317.33	10,838.32	764.11	-704.46	-766.81	0.00	0.00	0.00
11,000.00	6.84	317.33	10,937.61	772.86	-712.53	-775.59	0.00	0.00	0.00
11,073.92	6.84	317.33	11,011.00	779.33	-718.49	-782.09	0.00	0.00	0.00
BSPG3									
11,100.00	6.84	317.33	11,036.90	781.62	-720.60	-784.38	0.00	0.00	0.00
11,200.00	6.84	317.33	11,136.18	790.37	-728.67	-793.16	0.00	0.00	0.00
11,300.00	6.84	317.33	11,235.47	799.12	-736.74	-801.95	0.00	0.00	0.00
11,400.00	6.84	317.33	11,334.76	807.88	-744.81	-810.73	0.00	0.00	0.00
11,476.79	6.84	317.33	11,411.00	814.60	-751.00	-817.48	0.00	0.00	0.00
WFMP									
11,500.00	6.84	317.33	11,434.05	816.63	-752.88	-819.52	0.00	0.00	0.00
11,512.04	6.84	317.33	11,446.00	817.68	-753.85	-820.57	0.00	0.00	0.00
WFMP_X									
11,587.57	6.84	317.33	11,521.00	824.30	-759.94	-827.21	0.00	0.00	0.00
WFMP_Y									
11,600.00	6.84	317.33	11,533.34	825.38	-760.95	-828.30	0.00	0.00	0.00
11,637.93	6.84	317.33	11,571.00	828.71	-764.01	-831.63	0.00	0.00	0.00
WFMP_A									
11,700.00	6.84	317.33	11,632.63	834.14	-769.02	-837.08	0.00	0.00	0.00
11,800.00	6.84	317.33	11,731.92	842.89	-777.09	-845.87	0.00	0.00	0.00
11,878.38	6.84	317.33	11,809.74	849.75	-783.41	-852.75	0.00	0.00	0.00
11,900.00	5.45	301.71	11,831.24	851.24	-785.16	-854.25	10.00	-6.43	-72.25
11,950.00	5.09	245.10	11,881.06	851.55	-789.19	-854.58	10.00	-0.72	-113.20
12,000.00	8.49	212.62	11,930.72	847.51	-793.19	-850.55	10.00	6.79	-64.96
12,050.00	12.96	200.36	11,979.84	839.14	-797.14	-842.19	10.00	8.95	-24.52
12,100.00	17.72	194.45	12,028.04	826.51	-800.99	-829.57	10.00	9.51	-11.82
12,150.00	22.58	191.00	12,074.97	809.71	-804.72	-812.79	10.00	9.72	-6.90
12,200.00	27.48	188.73	12,120.26	788.87	-808.30	-791.96	10.00	9.81	-4.55



Prototype Well Planning LLC Planning Report

Database:	EDM 5000.1 Single User Db	Local Co-ordinate Reference:	Well #153H
Company:	XTO Energy	TVD Reference:	REF GL @ 3496.00usft
Project:	Eddy County, NM (NAD-27)	MD Reference:	REF GL @ 3496.00usft
Site:	Poker Lake Unit 18 TWR	North Reference:	Grid
Well:	#153H	Survey Calculation Method:	Minimum Curvature
Wellbore:	OH		
Design:	PERMIT		

Planned Survey

Measured Depth (usft)	Inclination (°)	Azimuth (°)	Vertical Depth (usft)	+N/-S (usft)	+E/-W (usft)	Vertical Section (usft)	Dogleg Rate (°/100usft)	Build Rate (°/100usft)	Turn Rate (°/100usft)
12,250.00	32.42	187.10	12,163.57	764.15	-811.71	-767.26	10.00	9.87	-3.26
12,300.00	37.37	185.86	12,204.57	735.73	-814.92	-738.86	10.00	9.90	-2.48
12,350.00	42.33	184.87	12,242.95	703.85	-817.90	-706.98	10.00	9.92	-1.97
12,400.00	47.30	184.06	12,278.41	668.73	-820.63	-671.87	10.00	9.93	-1.63
12,450.00	52.27	183.37	12,310.68	630.64	-823.09	-633.79	10.00	9.94	-1.39
12,500.00	57.24	182.76	12,339.53	589.88	-825.27	-593.04	10.00	9.95	-1.21
12,550.00	62.22	182.22	12,364.72	546.75	-827.14	-549.92	10.00	9.96	-1.08
12,563.78	63.59	182.08	12,371.00	534.48	-827.60	-537.66	10.00	9.96	-1.02
WFMP D									
12,600.00	67.20	181.72	12,386.08	501.58	-828.69	-504.76	10.00	9.96	-0.98
12,650.00	72.18	181.27	12,403.42	454.72	-829.91	-457.90	10.00	9.96	-0.92
12,700.00	77.16	180.83	12,416.64	406.52	-830.79	-409.71	10.00	9.96	-0.87
12,750.00	82.15	180.41	12,425.61	357.35	-831.32	-360.54	10.00	9.97	-0.83
12,800.00	87.13	180.01	12,430.28	307.59	-831.51	-310.78	10.00	9.97	-0.81
12,828.78	90.00	179.78	12,431.00	278.82	-831.45	-282.01	10.00	9.97	-0.81
LP									
12,900.00	90.00	179.78	12,431.00	207.60	-831.17	-210.79	0.00	0.00	0.00
13,000.00	90.00	179.78	12,431.00	107.60	-830.78	-110.79	0.00	0.00	0.00
13,100.00	90.00	179.78	12,431.00	7.60	-830.39	-10.79	0.00	0.00	0.00
13,200.00	90.00	179.78	12,431.00	-92.40	-829.99	89.21	0.00	0.00	0.00
13,300.00	90.00	179.78	12,431.00	-192.40	-829.60	189.21	0.00	0.00	0.00
13,400.00	90.00	179.78	12,431.00	-292.40	-829.21	289.21	0.00	0.00	0.00
13,500.00	90.00	179.78	12,431.00	-392.40	-828.82	389.21	0.00	0.00	0.00
13,600.00	90.00	179.78	12,431.00	-492.40	-828.42	489.21	0.00	0.00	0.00
13,700.00	90.00	179.78	12,431.00	-592.40	-828.03	589.21	0.00	0.00	0.00
13,800.00	90.00	179.78	12,431.00	-692.40	-827.64	689.21	0.00	0.00	0.00
13,900.00	90.00	179.78	12,431.00	-792.39	-827.25	789.21	0.00	0.00	0.00
14,000.00	90.00	179.78	12,431.00	-892.39	-826.85	889.21	0.00	0.00	0.00
14,100.00	90.00	179.78	12,431.00	-992.39	-826.46	989.21	0.00	0.00	0.00
14,200.00	90.00	179.78	12,431.00	-1,092.39	-826.07	1,089.21	0.00	0.00	0.00
14,300.00	90.00	179.78	12,431.00	-1,192.39	-825.68	1,189.21	0.00	0.00	0.00
14,400.00	90.00	179.78	12,431.00	-1,292.39	-825.28	1,289.21	0.00	0.00	0.00
14,500.00	90.00	179.78	12,431.00	-1,392.39	-824.89	1,389.21	0.00	0.00	0.00
14,600.00	90.00	179.78	12,431.00	-1,492.39	-824.50	1,489.21	0.00	0.00	0.00
14,700.00	90.00	179.78	12,431.00	-1,592.39	-824.11	1,589.21	0.00	0.00	0.00
14,800.00	90.00	179.78	12,431.00	-1,692.39	-823.71	1,689.21	0.00	0.00	0.00
14,900.00	90.00	179.78	12,431.00	-1,792.39	-823.32	1,789.21	0.00	0.00	0.00
15,000.00	90.00	179.78	12,431.00	-1,892.39	-822.93	1,889.21	0.00	0.00	0.00
15,100.00	90.00	179.78	12,431.00	-1,992.39	-822.54	1,989.21	0.00	0.00	0.00
15,200.00	90.00	179.78	12,431.00	-2,092.38	-822.14	2,089.21	0.00	0.00	0.00
15,300.00	90.00	179.78	12,431.00	-2,192.38	-821.75	2,189.21	0.00	0.00	0.00
15,400.00	90.00	179.78	12,431.00	-2,292.38	-821.36	2,289.21	0.00	0.00	0.00
15,500.00	90.00	179.78	12,431.00	-2,392.38	-820.97	2,389.21	0.00	0.00	0.00
15,600.00	90.00	179.78	12,431.00	-2,492.38	-820.57	2,489.21	0.00	0.00	0.00
15,700.00	90.00	179.78	12,431.00	-2,592.38	-820.18	2,589.21	0.00	0.00	0.00
15,800.00	90.00	179.78	12,431.00	-2,692.38	-819.79	2,689.21	0.00	0.00	0.00
15,900.00	90.00	179.78	12,431.00	-2,792.38	-819.40	2,789.21	0.00	0.00	0.00
16,000.00	90.00	179.78	12,431.00	-2,892.38	-819.00	2,889.21	0.00	0.00	0.00
16,100.00	90.00	179.78	12,431.00	-2,992.38	-818.61	2,989.21	0.00	0.00	0.00
16,200.00	90.00	179.78	12,431.00	-3,092.38	-818.22	3,089.21	0.00	0.00	0.00
16,300.00	90.00	179.78	12,431.00	-3,192.38	-817.83	3,189.21	0.00	0.00	0.00
16,400.00	90.00	179.78	12,431.00	-3,292.38	-817.43	3,289.21	0.00	0.00	0.00
16,500.00	90.00	179.78	12,431.00	-3,392.37	-817.04	3,389.21	0.00	0.00	0.00



Prototype Well Planning LLC Planning Report

Database:	EDM 5000.1 Single User Db	Local Co-ordinate Reference:	Well #153H
Company:	XTO Energy	TVD Reference:	REF GL @ 3496.00usft
Project:	Eddy County, NM (NAD-27)	MD Reference:	REF GL @ 3496.00usft
Site:	Poker Lake Unit 18 TWR	North Reference:	Grid
Well:	#153H	Survey Calculation Method:	Minimum Curvature
Wellbore:	OH		
Design:	PERMIT		

Planned Survey										
Measured Depth (usft)	Inclination (°)	Azimuth (°)	Vertical Depth (usft)	+N/-S (usft)	+E/-W (usft)	Vertical Section (usft)	Dogleg Rate (°/100usft)	Build Rate (°/100usft)	Turn Rate (°/100usft)	
16,600.00	90.00	179.78	12,431.00	-3,492.37	-816.65	3,489.21	0.00	0.00	0.00	
16,700.00	90.00	179.78	12,431.00	-3,592.37	-816.26	3,589.21	0.00	0.00	0.00	
16,800.00	90.00	179.78	12,431.00	-3,692.37	-815.86	3,689.21	0.00	0.00	0.00	
16,900.00	90.00	179.78	12,431.00	-3,792.37	-815.47	3,789.21	0.00	0.00	0.00	
17,000.00	90.00	179.78	12,431.00	-3,892.37	-815.08	3,889.21	0.00	0.00	0.00	
17,100.00	90.00	179.78	12,431.00	-3,992.37	-814.69	3,989.21	0.00	0.00	0.00	
17,200.00	90.00	179.78	12,431.00	-4,092.37	-814.29	4,089.21	0.00	0.00	0.00	
17,300.00	90.00	179.78	12,431.00	-4,192.37	-813.90	4,189.21	0.00	0.00	0.00	
17,400.00	90.00	179.78	12,431.00	-4,292.37	-813.51	4,289.21	0.00	0.00	0.00	
17,500.00	90.00	179.78	12,431.00	-4,392.37	-813.12	4,389.21	0.00	0.00	0.00	
17,600.00	90.00	179.78	12,431.00	-4,492.37	-812.72	4,489.21	0.00	0.00	0.00	
17,700.00	90.00	179.78	12,431.00	-4,592.37	-812.33	4,589.21	0.00	0.00	0.00	
17,800.00	90.00	179.78	12,431.00	-4,692.36	-811.94	4,689.21	0.00	0.00	0.00	
17,900.00	90.00	179.78	12,431.00	-4,792.36	-811.55	4,789.21	0.00	0.00	0.00	
18,000.00	90.00	179.78	12,431.00	-4,892.36	-811.15	4,889.21	0.00	0.00	0.00	
18,100.00	90.00	179.78	12,431.00	-4,992.36	-810.76	4,989.21	0.00	0.00	0.00	
18,200.00	90.00	179.78	12,431.00	-5,092.36	-810.37	5,089.21	0.00	0.00	0.00	
18,300.00	90.00	179.78	12,431.00	-5,192.36	-809.98	5,189.21	0.00	0.00	0.00	
18,400.00	90.00	179.78	12,431.00	-5,292.36	-809.58	5,289.21	0.00	0.00	0.00	
18,500.00	90.00	179.78	12,431.00	-5,392.36	-809.19	5,389.21	0.00	0.00	0.00	
18,600.00	90.00	179.78	12,431.00	-5,492.36	-808.80	5,489.21	0.00	0.00	0.00	
18,700.00	90.00	179.78	12,431.00	-5,592.36	-808.41	5,589.21	0.00	0.00	0.00	
18,800.00	90.00	179.78	12,431.00	-5,692.36	-808.01	5,689.21	0.00	0.00	0.00	
18,900.00	90.00	179.78	12,431.00	-5,792.36	-807.62	5,789.21	0.00	0.00	0.00	
19,000.00	90.00	179.78	12,431.00	-5,892.36	-807.23	5,889.21	0.00	0.00	0.00	
19,100.00	90.00	179.78	12,431.00	-5,992.35	-806.84	5,989.21	0.00	0.00	0.00	
19,200.00	90.00	179.78	12,431.00	-6,092.35	-806.44	6,089.21	0.00	0.00	0.00	
19,300.00	90.00	179.78	12,431.00	-6,192.35	-806.05	6,189.21	0.00	0.00	0.00	
19,400.00	90.00	179.78	12,431.00	-6,292.35	-805.66	6,289.21	0.00	0.00	0.00	
19,500.00	90.00	179.78	12,431.00	-6,392.35	-805.27	6,389.21	0.00	0.00	0.00	
19,600.00	90.00	179.78	12,431.00	-6,492.35	-804.87	6,489.21	0.00	0.00	0.00	
19,700.00	90.00	179.78	12,431.00	-6,592.35	-804.48	6,589.21	0.00	0.00	0.00	
19,800.00	90.00	179.78	12,431.00	-6,692.35	-804.09	6,689.21	0.00	0.00	0.00	
19,900.00	90.00	179.78	12,431.00	-6,792.35	-803.70	6,789.21	0.00	0.00	0.00	
20,000.00	90.00	179.78	12,431.00	-6,892.35	-803.30	6,889.21	0.00	0.00	0.00	
20,100.00	90.00	179.78	12,431.00	-6,992.35	-802.91	6,989.21	0.00	0.00	0.00	
20,200.00	90.00	179.78	12,431.00	-7,092.35	-802.52	7,089.21	0.00	0.00	0.00	
20,300.00	90.00	179.78	12,431.00	-7,192.35	-802.13	7,189.21	0.00	0.00	0.00	
20,400.00	90.00	179.78	12,431.00	-7,292.34	-801.73	7,289.21	0.00	0.00	0.00	
20,500.00	90.00	179.78	12,431.00	-7,392.34	-801.34	7,389.21	0.00	0.00	0.00	
20,600.00	90.00	179.78	12,431.00	-7,492.34	-800.95	7,489.21	0.00	0.00	0.00	
20,700.00	90.00	179.78	12,431.00	-7,592.34	-800.56	7,589.21	0.00	0.00	0.00	
20,800.00	90.00	179.78	12,431.00	-7,692.34	-800.16	7,689.21	0.00	0.00	0.00	
20,900.00	90.00	179.78	12,431.00	-7,792.34	-799.77	7,789.21	0.00	0.00	0.00	
21,000.00	90.00	179.78	12,431.00	-7,892.34	-799.38	7,889.21	0.00	0.00	0.00	
21,100.00	90.00	179.78	12,431.00	-7,992.34	-798.99	7,989.21	0.00	0.00	0.00	
21,200.00	90.00	179.78	12,431.00	-8,092.34	-798.59	8,089.21	0.00	0.00	0.00	
21,300.00	90.00	179.78	12,431.00	-8,192.34	-798.20	8,189.21	0.00	0.00	0.00	
21,400.00	90.00	179.78	12,431.00	-8,292.34	-797.81	8,289.21	0.00	0.00	0.00	
21,500.00	90.00	179.78	12,431.00	-8,392.34	-797.42	8,389.21	0.00	0.00	0.00	
21,600.00	90.00	179.78	12,431.00	-8,492.34	-797.02	8,489.21	0.00	0.00	0.00	
21,700.00	90.00	179.78	12,431.00	-8,592.33	-796.63	8,589.21	0.00	0.00	0.00	
21,800.00	90.00	179.78	12,431.00	-8,692.33	-796.24	8,689.21	0.00	0.00	0.00	
21,900.00	90.00	179.78	12,431.00	-8,792.33	-795.85	8,789.21	0.00	0.00	0.00	



Prototype Well Planning LLC Planning Report

Database:	EDM 5000.1 Single User Db	Local Co-ordinate Reference:	Well #153H
Company:	XTO Energy	TVD Reference:	REF GL @ 3496.00usft
Project:	Eddy County, NM (NAD-27)	MD Reference:	REF GL @ 3496.00usft
Site:	Poker Lake Unit 18 TWR	North Reference:	Grid
Well:	#153H	Survey Calculation Method:	Minimum Curvature
Wellbore:	OH		
Design:	PERMIT		

Planned Survey									
Measured Depth (usft)	Inclination (°)	Azimuth (°)	Vertical Depth (usft)	+N/-S (usft)	+E/-W (usft)	Vertical Section (usft)	Dogleg Rate (°/100usft)	Build Rate (°/100usft)	Turn Rate (°/100usft)
22,000.00	90.00	179.78	12,431.00	-8,892.33	-795.45	8,889.21	0.00	0.00	0.00
22,100.00	90.00	179.78	12,431.00	-8,992.33	-795.06	8,989.21	0.00	0.00	0.00
22,200.00	90.00	179.78	12,431.00	-9,092.33	-794.67	9,089.21	0.00	0.00	0.00
22,300.00	90.00	179.78	12,431.00	-9,192.33	-794.28	9,189.21	0.00	0.00	0.00
22,400.00	90.00	179.78	12,431.00	-9,292.33	-793.88	9,289.21	0.00	0.00	0.00
22,500.00	90.00	179.78	12,431.00	-9,392.33	-793.49	9,389.21	0.00	0.00	0.00
22,600.00	90.00	179.78	12,431.00	-9,492.33	-793.10	9,489.21	0.00	0.00	0.00
22,700.00	90.00	179.78	12,431.00	-9,592.33	-792.71	9,589.21	0.00	0.00	0.00
22,737.37	90.00	179.78	12,431.00	-9,629.69	-792.56	9,626.58	0.00	0.00	0.00
22,800.00	90.00	179.78	12,431.00	-9,692.33	-792.31	9,689.21	0.00	0.00	0.00
22,867.38	90.00	179.78	12,431.00	-9,759.70	-792.05	9,756.59	0.00	0.00	0.00

Design Targets									
Target Name	Dip Angle (°)	Dip Dir. (°)	TVD (usft)	+N/-S (usft)	+E/-W (usft)	Northing (usft)	Easting (usft)	Latitude	Longitude
- hit/miss target									
- Shape									
#153H: SHL (613' FNL/2 - plan hits target center - Point	0.00	0.00	0.00	0.00	0.00	439,867.40	659,584.20	32.208260	-103.817370
#153H: FTP/LP - plan hits target center - Point	0.00	0.00	12,431.00	278.82	-831.45	440,146.20	658,752.80	32.209037	-103.820054
#153H: PBHL (200' FSL - plan hits target center - Point	0.00	0.00	12,431.00	-9,759.70	-792.05	430,108.30	658,792.20	32.181443	-103.820082
#153H: LTP - plan misses target center by 0.01usft at 22737.37usft MD (12431.00 TVD, -9629.69 N, -792.56 E) - Point	0.00	0.00	12,431.00	-9,629.69	-792.55	430,238.30	658,791.70	32.181801	-103.820081



Prototype Well Planning LLC
Planning Report

Database:	EDM 5000.1 Single User Db	Local Co-ordinate Reference:	Well #153H
Company:	XTO Energy	TVD Reference:	REF GL @ 3496.00usft
Project:	Eddy County, NM (NAD-27)	MD Reference:	REF GL @ 3496.00usft
Site:	Poker Lake Unit 18 TWR	North Reference:	Grid
Well:	#153H	Survey Calculation Method:	Minimum Curvature
Wellbore:	OH		
Design:	PERMIT		

Formations						
Measured Depth (usft)	Vertical Depth (usft)	Name	Lithology	Dip (°)	Dip Direction (°)	
521.00	521.00	RSLR				
606.00	606.00	Magenta Dolomite				
902.00	902.00	T/SALT				
4,023.77	4,011.00	B/SALT				
4,266.50	4,252.00	DLWR				
6,778.37	6,746.00	BYCN				
8,153.15	8,111.00	BSPG_LM				
9,117.00	9,068.00	BSPG1				
9,598.42	9,546.00	BSPG2_LM				
9,920.72	9,866.00	BSPG2				
10,303.44	10,246.00	BSPG3_LM				
11,073.92	11,011.00	BSPG3				
11,476.79	11,411.00	WFMP				
11,512.04	11,446.00	WFMP_X				
11,587.57	11,521.00	WFMP_Y				
11,637.93	11,571.00	WFMP_A				
12,563.78	12,371.00	WFMP_D				
12,828.78	12,431.00	LP				

District I
1625 N. French Dr., Hobbs, NM 88240
District II
811 S. First St., Artesia, NM 88210
District III
1000 Rio Brazos Road, Aztec, NM 87410
District IV
1220 S. St. Francis Dr., Santa Fe, NM 87505

State of New Mexico
Energy, Minerals and Natural Resources Department
Oil Conservation Division
1220 South St. Francis Dr.
Santa Fe, NM 87505

Submit Original
to Appropriate
District Office

GAS CAPTURE PLAN

Date: 04/26/2019

☒ Original Operator & OGRID No.: XTO Permian Operating, LLC [373075]
☐ Amended - Reason for Amendment: _____

This Gas Capture Plan outlines actions to be taken by the Operator to reduce well/production facility flaring/venting for new completion (new drill, recomple to new zone, re-frac) activity.

Note: Form C-129 must be submitted and approved prior to exceeding 60 days allowed by Rule (Subsection A of 19.15.18.12 NMAC).

Well(s)/Production Facility – Name of facility: Poker Lake Unit 18 TWR West CTB

The well(s) that will be located at the production facility are shown in the table below.

Well Name	API	Well Location (ULSTR)	Footages	Expected MCF/D	Flared or Vented	Comments
Poker Lake Unit18 TWR 107H		A-19-24S-31E	175'FNL & 566'FEL	2800	Flared/Sold	
Poker Lake Unit18 TWR 121H		1-19-24S-31E	75'FNL & 535'FWL	3000	Flared/Sold	
Poker Lake Unit18 TWR 152H		1-19-24S-31E	40'FNL & 535'FWL	2800	Flared/Sold	
Poker Lake Unit18 TWR 161H		1-19-24S-31E	5'FNL & 535'FWL	4800	Flared/Sold	
Poker Lake Unit18 TWR 162H		1-19-24S-31E	5'FNL & 785'FWL	4800	Flared/Sold	
Poker Lake Unit18 TWR 122H		1-19-24S-31E	40'FNL & 785'FWL	4300	Flared/Sold	
Poker Lake Unit18 TWR 103H		C-19-24S-31E	648'FNL & 2420'FWL	2600	Flared/Sold	
Poker Lake Unit18 TWR 153H		C-19-24S-31E	613'FNL & 2420'FWL	2700	Flared/Sold	
Poker Lake Unit18 TWR 164H		C-19-24S-31E	578'FNL & 2420'FWL	2600	Flared/Sold	
Poker Lake Unit18 TWR 154H		C-19-24S-31E	578'FNL & 2670'FWL	4300	Flared/Sold	
Poker Lake Unit18 TWR 124H		C-19-24S-31E	613'FNL & 2670'FWL	2800	Flared/Sold	
Poker Lake Unit18 TWR 126H		B-19-24S-31E	265'FNL & 1856'FEL	4800	Flared/Sold	
Poker Lake Unit18 TWR 166H		B-19-24S-31E	230'FNL & 1856'FEL	3300	Flared/Sold	
Poker Lake Unit18 TWR 165H		B-19-24S-31E	230'FNL & 2106'FEL	2900	Flared/Sold	
Poker Lake Unit18 TWR 155H		B-19-24S-31E	265'FNL & 2106'FEL	3000	Flared/Sold	
Poker Lake Unit18 TWR 125H		B-19-24S-31E	300'FNL & 2106'FEL	2600	Flared/Sold	
Poker Lake Unit18 TWR 128H		A-19-24S-31E	140'FNL & 566'FEL	2700	Flared/Sold	
Poker Lake Unit18 TWR 158H		A-19-24S-31E	105'FNL & 566'FEL	2600	Flared/Sold	
Poker Lake Unit18 TWR 157H		A-19-24S-31E	105'FNL & 816'FEL	4300	Flared/Sold	
Poker Lake Unit18 TWR 167H		A-19-24S-31E	140'FNL & 816'FEL	4300	Flared/Sold	
Poker Lake Unit18 TWR 127H		A-19-24S-31E	175'FNL & 816'FEL	2800	Flared/Sold	
Poker Lake Unit18 TWR 102H		1-19-24S-31E	75'FNL & 785'FWL	2800	Flared/Sold	
Poker Lake Unit18 TWR 104H		C-19-24S-31E	648'FNL & 2670'FWL	2800	Flared/Sold	
Poker Lake Unit18 TWR 105H		B-19-24S-31E	300'FNL & 1856'FEL	2800	Flared/Sold	



APD ID: 10400042273

Submission Date: 06/03/2019

Highlighted data
reflects the most
recent changes
[Show Final Text](#)

Operator Name: XTO PERMIAN OPERATING LLC

Well Name: POKER LAKE UNIT 18 TWR

Well Number: 153H

Well Type: CONVENTIONAL GAS WELL

Well Work Type: Drill

Section 1 - Existing Roads

Will existing roads be used? YES

Existing Road Map:

PLU_18_TWR_153H_Road_20190529081723.pdf

Existing Road Purpose: ACCESS, FLUID TRANSPORT

Row(s) Exist? YES

ROW ID(s)

ID:

Do the existing roads need to be improved? NO

Existing Road Improvement Description:

Existing Road Improvement Attachment:

Section 2 - New or Reconstructed Access Roads

Will new roads be needed? YES

New Road Map:

PLU_18_TWR_Access_20191010070851.pdf

New road type: RESOURCE

Length: 7652.64

Feet

Width (ft.): 30

Max slope (%): 2

Max grade (%): 3

Army Corp of Engineers (ACOE) permit required? NO

ACOE Permit Number(s):

New road travel width: 14

New road access erosion control: The access road will be constructed and maintained as necessary to prevent soil erosion and accommodate all-weather traffic. The road will be crowned and ditched with water turnouts installed as necessary to provide for proper drainage along with access road route.

New road access plan or profile prepared? NO

New road access plan attachment:

Operator Name: XTO PERMIAN OPERATING LLC

Well Name: POKER LAKE UNIT 18 TWR

Well Number: 153H

Access road engineering design? NO

Access road engineering design attachment:

Turnout? N

Access surfacing type: OTHER

Access topsoil source: ONSITE

Access surfacing type description: Surface material will be native caliche

Access onsite topsoil source depth: 6

Offsite topsoil source description:

Onsite topsoil removal process: Approximately 6 inches of topsoil (root zone) will be stripped from the proposed access road prior to any further construction activity. The topsoil that was stripped will be spread along the edge of the road and within the ditch. The topsoil will be seeded with the proper seed mix designated by the BLM.

Access other construction information: Construction, reclamation, and/or routine maintenance will not be conducted during periods when the soil conditions for construction could lead to impacts to the surrounding environment, or when watershed damage is likely to occur as a result of these activities.

Access miscellaneous information: The Poker Lake Unit 18 TWR area is accessed from the intersection of Jal Hwy (US Hwy 285) and Twin Wells road. Go approximately 7.0 miles. Turn left (Southeast) onto lease road and go approx. 0.5 miles. Locations will be to the East. Transportation Plan identifying existing roads that will be used to access the project area is included from Frank's Surveying marked as, 'Topographical and Access Road Map.' All equipment and vehicles will be confined to the routes shown on the "Vicinity Map" as provided by Frank's Surveying. Maintenance of the access roads will continue until abandonment and reclamation of the well pads is completed. The project is located approximately 50 miles from the town of Malaga.

Number of access turnouts: 0

Access turnout map:

Drainage Control

New road drainage crossing: OTHER

Drainage Control comments: The access road and associated drainage structures will be constructed and maintained in accordance with road guidelines contained in the joint BLM/USFS publication: Surface Operating Standards for Oil and Gas Exploration and Development, The Gold Book, Fourth Edition and/or BLM Manual Section 9113 concerning road construction standards on projects subject to federal jurisdiction.

Road Drainage Control Structures (DCS) description: No drainage control structures were identified at onsite. Drainage control structures will be applied for as-needed and be in accordance with road guidelines contained in the joint BLM/USFS publication: Surface Operating Standards for Oil and Gas Exploration and Development, The Gold Book, Fourth Edition and/or BLM Manual Section 9113 concerning road construction standards on projects subject to federal jurisdiction.

Road Drainage Control Structures (DCS) attachment:

Access Additional Attachments

Operator Name: XTO PERMIAN OPERATING LLC

Well Name: POKER LAKE UNIT 18 TWR

Well Number: 153H

Section 3 - Location of Existing Wells

Existing Wells Map? YES

Attach Well map:

PLU_18_TWR_1_Mile_20190523133246.pdf

Section 4 - Location of Existing and/or Proposed Production Facilities

Submit or defer a Proposed Production Facilities plan? SUBMIT

Production Facilities description: Two 600' x 600' pads were staked with the BLM for construction and use as Central Tank Batteries (CTBs). The pads are located in Section 19-T24S-R31E NMPM, Eddy County, NM. Plats of the proposed facilities are attached. Only the area necessary to maintain facilities will be disturbed. Due to air permitting timeframes and anticipated reserves, two facilities are anticipated to be necessary for full area development. A 3160-5 sundry notification will be submitted after construction with a site-security diagram and layout of the facility with associated equipment. In the event the wells are found productive, 24-10" or less composite flexpipe or steel flowlines with a maximum safety pressure rating of 1400psi (operating pressure: 750psi) will be buried within proposed lease road corridors where possible from the proposed wells to the PLU 18 West and East CTBs where the oil, gas, and water will be metered and appropriately separated. If XTO Permian Operating, LLC decides to run surface lines, 24-4" or less flexpipe or steel flowlines with a max. safety psi rating of 750 (op pressure: 125psi) will be laid within proposed lease road corridors from the proposed wells to the proposed CTBs. An additional 24-6" high pressure gas lines will be buried within the proposed lease road corridors where possible for gas lift, fuel gas, and water. The distance of proposed flowlines per well will be approximately 6,296.93' or less per well based on the location of the well pad in conjunction with the facility location. All flowlines will follow proposed lease road corridors where possible. A plat of the proposed flowline route for the lease is attached. *5,351' of pipeline in Sec. 19, T24S, R31E was approved with the Row 2 East TL corridor sundry (DOI-BLM-NM-P020-2018-0522 EA). A gas purchaser has been identified. Two 110' corridors are requested to connect with the Poker Lake Unit Row 2 pipeline extending from the PLU 18 TWR West and East CTBs. XTO Permian Operating, LLC will be installing the line with anticipated risers located on the CTBs. The gas purchaser will be responsible for permitting their own gas lines and compressor station, where applicable, through private, state, and federal lands. PLU 18 TWR West GSL approx. Length: 700.04'. PLU 18 TWR East GSL approx. Length: 760.75'. Produced water will be hauled from location to a commercial disposal facility as needed. Once wells are drilled and completed, a 3160-5 sundry notification will be submitted to BLM in compliance with Onshore Order 7. There are two flares associated with the PLU 18 TWR development. The flare stacks will be 50'x50' and located on the approved CTB pads. Flares will be sized and rated based on anticipated reserves and recovery of gas throughout the development area with 150' of distance between all facility equipment, road and well pad locations for safety purposes. All permanent (on site six months or longer) aboveground structures constructed or installed on location and not subject to safety requirements will be painted earth-tone colors such as 'shale green' that reduce the visual impacts of the built environment. Containment berms will be constructed completely around any production facilities designed to hold fluids. The containment berms will be constructed of compacted subsoil, be sufficiently impervious, hold 1 ½ times the capacity of the largest tank and away from cut or fill areas. All electrical poles and lines will be placed within existing and proposed lease roads corridors. All lines will be primary 12,740 volt to properly run expected production equipment. Approx. 2302.41' of electrical will be run from the anticipated tie-in point with a request for 30' ROW construction and maintenance buffer. This distance is a max. approximation and may vary based on lease road corridors, varying elevations and terrain in the area.

Production Facilities map:

PLU_18_TWR_CTBE_20190523133555.pdf

PLU_18_TWR_CTBW_20190529081828.pdf

PLU_18_TWR_FL_20191010071014.pdf

Operator Name: XTO PERMIAN OPERATING LLC

Well Name: POKER LAKE UNIT 18 TWR

Well Number: 153H

PLU_18_TWR_GS_20191010071026.pdf

PLU_18_TWR_OHE_20191010071041.pdf

Section 5 - Location and Types of Water Supply

Water Source Table

Water source type: OTHER

Describe type: Fresh Water; in Section 6, T25S-R29E

Water source use type: SURFACE CASING
STIMULATION
INTERMEDIATE/PRODUCTION
CASING

Source latitude:

Source longitude:

Source datum:

Water source permit type: PRIVATE CONTRACT
PRIVATE CONTRACT
PRIVATE CONTRACT

Water source transport method: TRUCKING
TRUCKING
TRUCKING

Source land ownership: FEDERAL

Source transportation land ownership: FEDERAL

Water source volume (barrels): 335000

Source volume (acre-feet): 43.179188

Source volume (gal): 14070000

Water source type: OTHER

Describe type: Fresh Water; Section 27, T25S-R30E

Water source use type: SURFACE CASING
STIMULATION
INTERMEDIATE/PRODUCTION
CASING

Source latitude:

Source longitude:

Source datum:

Water source permit type: PRIVATE CONTRACT

Operator Name: XTO PERMIAN OPERATING LLC

Well Name: POKER LAKE UNIT 18 TWR

Well Number: 153H

SURFACE CASING

STIMULATION

INTERMEDIATE/PRODUCTION
CASING

PRIVATE CONTRACT

PRIVATE CONTRACT

PRIVATE CONTRACT

Water source transport method: TRUCKING

TRUCKING

TRUCKING

TRUCKING

Source land ownership: FEDERAL

Source transportation land ownership: FEDERAL

Water source volume (barrels): 335000

Source volume (acre-feet): 43.179188

Source volume (gal): 14070000

Water source and transportation map:

PLU_18_TWR_153H_Wtr_20190529081926.pdf

Water source comments: The well will be drilled using a combination of water mud systems as outlined in the Drilling Program. The water will be obtained from a 3rd party vendor and hauled to the anticipated pit in Section 7 by transport truck using the existing and proposed roads depicted in the attached exhibits. No water well will be drilled on the location. Water for drilling, completion and dust control will be purchased from the following company: Texas Pacific Water Resources Water for drilling, completion and dust control will be supplied by Texas Pacific Water Resources for sale to XTO. from Section 27, T25S-R30E, Eddy County, New Mexico. In the event that Texas Pacific Water Resources does not have the appropriate water for XTO at time of drilling and completion, then XTO water will come from Intrepid Potash Company with the location of the water being in Section 6, T25S-R29E, Eddy County, New Mexico. Anticipated water usage for drilling includes an estimated 35,000 barrels of water to drill a horizontal well in a combination of fresh water and brine as detailed in the mud program in the drilling plans. These volumes are calculated for ~1.5bbls per foot of hole drilled with excess to accommodate any lost circulation or wash out that may occur. Actual water volumes used during operations will depend on the depth of the well, length of horizontal sections, and the losses that may occur during the operation. Temporary water flowlines will be permitted via ROW approval letter and proper grants as-needed based on drilling and completion schedules as needed. Well completion is expected to require approximately 300,000 barrels of water per horizontal well. Actual water volumes used during operations will depend on the depth of the well and length of horizontal sections.

New water well? NO

New Water Well Info

Operator Name: XTO PERMIAN OPERATING LLC

Well Name: POKER LAKE UNIT 18 TWR

Well Number: 153H

Well latitude:

Well Longitude:

Well datum:

Well target aquifer:

Est. depth to top of aquifer(ft):

Est thickness of aquifer:

Aquifer comments:

Aquifer documentation:

Well depth (ft):

Well casing type:

Well casing outside diameter (in.):

Well casing inside diameter (in.):

New water well casing?

Used casing source:

Drilling method:

Drill material:

Grout material:

Grout depth:

Casing length (ft.):

Casing top depth (ft.):

Well Production type:

Completion Method:

Water well additional information:

State appropriation permit:

Additional information attachment:

Section 6 - Construction Materials

Using any construction materials: YES

Construction Materials description: Construction, reclamation, and/or routine maintenance will not be conducted during periods when the soil conditions for construction could lead to impacts to the surrounding environment, or when watershed damage is likely to occur as a result of these activities. Any construction material that may be required for surfacing of the drill pad and access road will be from a contractor having a permitted source of materials within the general area. No construction materials will be removed from federal lands without prior approval from the appropriate surface management agency. All roads and well pads will be constructed of 6" rolled and compacted caliche. Anticipated Caliche Locations: Pit 1: Federal Caliche Pit, Section 17-T25S-R30E Pit 2: Federal Caliche Pit, Section 34-T25S-R29E

Construction Materials source location attachment:

Section 7 - Methods for Handling Waste

Waste type: DRILLING

Waste content description: Fluid

Amount of waste: 500 barrels

Waste disposal frequency : One Time Only

Safe containment description: Steel mud pits

Safe containmant attachment:

Waste disposal type: HAUL TO COMMERCIAL FACILITY **Disposal location ownership:** COMMERCIAL

Disposal type description:

Operator Name: XTO PERMIAN OPERATING LLC

Well Name: POKER LAKE UNIT 18 TWR

Well Number: 153H

Disposal location description: R360 Environmental Solutions 4507 W Carlsbad Hwy, Hobbs, NM 88240 (575) 393-1079

Waste type: DRILLING

Waste content description: Cuttings

Amount of waste: 2100 pounds

Waste disposal frequency : One Time Only

Safe containment description: The well will be drilled utilizing a closed-loop mud system. Drill cuttings will be held in roll-off style mud boxes.

Safe containmant attachment:

Waste disposal type: HAUL TO COMMERCIAL FACILITY **Disposal location ownership:** COMMERCIAL

Disposal type description:

Disposal location description: R360 Environmental Solutions 4507 W Carlsbad Hwy, Hobbs, NM 88240 (575) 393-1079

Waste type: SEWAGE

Waste content description: Human Waste

Amount of waste: 250 gallons

Waste disposal frequency : Weekly

Safe containment description: Portable, self-contained toilets will be provided for human waste disposal. Upon completion of drilling and completion activities, or as required, the toilet holding tanks will be pumped and the contents thereof disposed of in an approved sewage disposal facility. All state and local laws and regulations pertaining to the disposal of human and solid waste will be complied with. This equipment will be properly maintained during the drilling and completion operations and will be removed when all operations are complete.

Safe containmant attachment:

Waste disposal type: HAUL TO COMMERCIAL FACILITY **Disposal location ownership:** COMMERCIAL

Disposal type description:

Disposal location description: A licensed 3rd party contractor will be used to haul and dispose of human waste.

Waste type: GARBAGE

Waste content description: Garbage, junk and non-flammable waste materials

Amount of waste: 250 pounds

Waste disposal frequency : Weekly

Safe containment description: All garbage, junk and non-flammable waste materials will be contained in a self-contained, portable dumpster or trash cage, to prevent scattering and will be removed and deposited in an approve sanitary landfill. Immediately after drilling all debris and other waste materials on and around the well location not contained in the trash cage will be cleaned up and removed from the location. No potentially adverse materials or substances will be left on the location.

Safe containmant attachment:

Waste disposal type: HAUL TO COMMERCIAL **Disposal location ownership:** COMMERCIAL

Operator Name: XTO PERMIAN OPERATING LLC

Well Name: POKER LAKE UNIT 18 TWR

Well Number: 153H

FACILITY

Disposal type description:

Disposal location description: A licensed 3rd party vendor will be contracted to haul and safely dispose of garbage, junk and non-flammable waste materials.

Reserve Pit

Reserve Pit being used? NO

Temporary disposal of produced water into reserve pit?

Reserve pit length (ft.)

Reserve pit width (ft.)

Reserve pit depth (ft.)

Reserve pit volume (cu. yd.)

Is at least 50% of the reserve pit in cut?

Reserve pit liner

Reserve pit liner specifications and installation description

Cuttings Area

Cuttings Area being used? NO

Are you storing cuttings on location? YES

Description of cuttings location Cuttings. The well will be drilled utilizing a closed-loop mud system. Drill cuttings will be held in roll-off style mud boxes and taken to a New Mexico Oil Conservation Division (NMOCD) approved disposal site. Drilling Fluids. These will be contained in steel mud pits and then taken to a NMOCD approved commercial disposal facility. Produced Fluids. Water produced from the well during completion will be held temporarily in steel tanks and then taken to a NMOCD approved commercial disposal facility. Oil produced during operations will be stored in tanks until sold.

Cuttings area length (ft.)

Cuttings area width (ft.)

Cuttings area depth (ft.)

Cuttings area volume (cu. yd.)

Is at least 50% of the cuttings area in cut?

WCuttings area liner

Cuttings area liner specifications and installation description

Section 8 - Ancillary Facilities

Are you requesting any Ancillary Facilities?: NO

Ancillary Facilities attachment:

Comments:

Operator Name: XTO PERMIAN OPERATING LLC

Well Name: POKER LAKE UNIT 18 TWR

Well Number: 153H

Section 9 - Well Site Layout

Well Site Layout Diagram:

PLU_18_TWR_153H_Well_20191010071155.pdf

Comments: This is a multi-well pad.

Section 10 - Plans for Surface Reclamation

Type of disturbance: New Surface Disturbance

Multiple Well Pad Name: POKER LAKE UNIT 18 TWR

Multiple Well Pad Number: 2

Recontouring attachment:

PLU_18_TWR_Int_Rec_Pad2_20190523133820.pdf

PLU_18_TWR_Int_Rec_Pad1_20190523133808.pdf

PLU_18_TWR_Int_Rec_Pad4_20190523133841.pdf

PLU_18_TWR_Int_Rec_Pad3_20190523133830.pdf

Drainage/Erosion control construction: All compacted areas to be seeded will be ripped to a minimum depth of 18 inches with a minimum furrow spacing of 2 feet, followed by recontouring the surface and then evenly spreading the stockpiled topsoil. Prior to seeding, the seedbed will be scarified to a depth of no less than 4-6 inches.

Drainage/Erosion control reclamation: Erosion features are equal to or less than surrounding area and erosion control is sufficient so that water naturally infiltrates into the soil and gulying, headcutting, slumping, and deep or excessive rills (greater than 3 inches) are not observed.

Well pad proposed disturbance

(acres): 22.97

Road proposed disturbance (acres):

5.27

Powerline proposed disturbance

(acres): 0

Pipeline proposed disturbance

(acres): 8.03

Other proposed disturbance (acres):

16.53

Total proposed disturbance: 52.8

Well pad interim reclamation (acres):

7.68

Road interim reclamation (acres): 0

Powerline interim reclamation (acres):

0

Pipeline interim reclamation (acres):

8.03

Other interim reclamation (acres): 0

Total interim reclamation: 15.71

Well pad long term disturbance

(acres): 15.29

Road long term disturbance (acres):

5.27

Powerline long term disturbance

(acres): 0

Pipeline long term disturbance

(acres): 0

Other long term disturbance (acres):

16.53

Total long term disturbance: 37.09

Disturbance Comments:

Reconstruction method: The original stock piled topsoil will be spread over the areas being reclaimed and the original landform will be restored for all disturbed areas including well pads, production facilities, roads, pipelines, and utility corridors as close as possible to the original topography. The location will then be ripped and seeded.

Topsoil redistribution: The original stock piled topsoil will be spread over the areas being reclaimed and the original landform will be restored for all disturbed areas including well pads, production facilities, roads, pipelines, and utility corridors as close as possible to the original topography. The location will then be ripped and seeded.

Soil treatment: A self-sustaining, vigorous, diverse, native (or otherwise approved) plant community will be established on the site with a density sufficient to control erosion and invasion by non-native plants and to re-establish wildlife habitat or forage production. At a minimum, the established plant community will consist of species included in the seed mix and/or

Operator Name: XTO PERMIAN OPERATING LLC

Well Name: POKER LAKE UNIT 18 TWR

Well Number: 153H

desirable species occurring in the surrounding natural vegetation.

Existing Vegetation at the well pad: Soils are classified as Simona Gravelly Fine Sandy Loam and Simona-Bippus Complex. Simona soils are found on alluvial fans and plans and form in mixed alluvium and/or Aeolian sands. Bippus soils are found on alluvial fans and floodplains and form in mixed alluvium. The Simona-Bippus soils are dominant to the east and the Simona Gravelly Fine Sandy Loams are dominant to the West. Dominant vegetation species include: mesquite, sumac snakeweed, and various forbs and grasses. Ground cover is minimal, offering 90 percent visibility.

Existing Vegetation at the well pad attachment:

Existing Vegetation Community at the road: Soils are classified as Simona Gravelly Fine Sandy Loam and Simona-Bippus Complex. Simona soils are found on alluvial fans and plans and form in mixed alluvium and/or Aeolian sands. Bippus soils are found on alluvial fans and floodplains and form in mixed alluvium. The Simona-Bippus soils are dominant to the east and the Simona Gravelly Fine Sandy Loams are dominant to the West. Dominant vegetation species include: mesquite, sumac snakeweed, and various forbs and grasses. Ground cover is minimal, offering 90 percent visibility.

Existing Vegetation Community at the road attachment:

Existing Vegetation Community at the pipeline: Soils are classified as Simona Gravelly Fine Sandy Loam and Simona-Bippus Complex. Simona soils are found on alluvial fans and plans and form in mixed alluvium and/or Aeolian sands. Bippus soils are found on alluvial fans and floodplains and form in mixed alluvium. The Simona-Bippus soils are dominant to the east and the Simona Gravelly Fine Sandy Loams are dominant to the West. Dominant vegetation species include: mesquite, sumac snakeweed, and various forbs and grasses. Ground cover is minimal, offering 90 percent visibility.

Existing Vegetation Community at the pipeline attachment:

Existing Vegetation Community at other disturbances: Soils are classified as Simona Gravelly Fine Sandy Loam and Simona-Bippus Complex. Simona soils are found on alluvial fans and plans and form in mixed alluvium and/or Aeolian sands. Bippus soils are found on alluvial fans and floodplains and form in mixed alluvium. The Simona-Bippus soils are dominant to the east and the Simona Gravelly Fine Sandy Loams are dominant to the West. Dominant vegetation species include: mesquite, sumac snakeweed, and various forbs and grasses. Ground cover is minimal, offering 90 percent visibility.

Existing Vegetation Community at other disturbances attachment:

Non native seed used? NO

Non native seed description:

Seedling transplant description:

Will seedlings be transplanted for this project? NO

Seedling transplant description attachment:

Will seed be harvested for use in site reclamation? NO

Seed harvest description:

Seed harvest description attachment:

Operator Name: XTO PERMIAN OPERATING LLC

Well Name: POKER LAKE UNIT 18 TWR

Well Number: 153H

Seed Management

Seed Table

Seed type:

Seed source:

Seed name:

Source name:

Source address:

Source phone:

Seed cultivar:

Seed use location:

PLS pounds per acre:

Proposed seeding season:

Seed Summary	
Seed Type	Pounds/Acre

Total pounds/Acre:

Seed reclamation attachment:

Operator Contact/Responsible Official Contact Info

First Name: Jeff

Last Name: Raines

Phone: (432)620-4349

Email: jeffrey_raines@xtoenergy.com

Seedbed prep: Initial seedbed preparation will consist of recontouring to the appropriate interim or final reclamation standard. All compacted areas to be seeded will be ripped to a minimum depth of 18 inches with a minimum furrow spacing of 2 feet, followed by recontouring the surface and then evenly spreading the stockpiled topsoil. Prior to seeding, the seedbed will be scarified to a depth of no less than 4-6 inches. If the site is to be broadcast seeded, the surface will be left rough enough to trap seed and snow, control erosion, and increase water infiltration.

Seed BMP: If broadcast seeding is to be used and is delayed, final seedbed preparation will consist of contour cultivating to a depth of 4-6 inches within 24 hours prior to seeding, dozer tracking, or other imprinting in order to break the soil crust and create seed germination micro-sites.

Seed method: Seeding will be conducted no more than two weeks following completion of final seedbed preparation. A certified weed-free seed mix designed by the BLM to meet reclamation standards will be used. If the site is harrowed or dragged, seed will be covered by no more than 0.25 inch of soil.

Existing invasive species? NO

Existing invasive species treatment description:

Existing invasive species treatment attachment:

Weed treatment plan description: Weed control for all phases will be through the use of approved pesticides and herbicides according to applicable State, Federal and local laws.

Weed treatment plan attachment:

Monitoring plan description: Monitoring of invasive and noxious weeds will be visual and as-needed. If it is determined

Operator Name: XTO PERMIAN OPERATING LLC

Well Name: POKER LAKE UNIT 18 TWR

Well Number: 153H

additional methods are required to monitor invasive and noxious weeds, appropriate BLM authorities will be contacted with a plan of action for approval prior to implementation.

Monitoring plan attachment:

Success standards: 100% compliance with applicable regulations.

Pit closure description: There will be no reserve pit as each well will be drilled utilizing a closed loop mud system. The closed loop system will meet the NMOCD requirements 19.15.17.

Pit closure attachment:

Section 11 - Surface Ownership

Disturbance type: OTHER

Describe: CTB

Surface Owner: BUREAU OF LAND MANAGEMENT

Other surface owner description:

BIA Local Office:

BOR Local Office:

COE Local Office:

DOD Local Office:

NPS Local Office:

State Local Office:

Military Local Office:

USFWS Local Office:

Other Local Office:

USFS Region:

USFS Forest/Grassland:

USFS Ranger District:

Disturbance type: OTHER

Describe: Flowline

Surface Owner: BUREAU OF LAND MANAGEMENT

Other surface owner description:

BIA Local Office:

BOR Local Office:

COE Local Office:

Operator Name: XTO PERMIAN OPERATING LLC

Well Name: POKER LAKE UNIT 18 TWR

Well Number: 153H

DOD Local Office:

NPS Local Office:

State Local Office:

Military Local Office:

USFWS Local Office:

Other Local Office:

USFS Region:

USFS Forest/Grassland:

USFS Ranger District:

Disturbance type: WELL PAD

Describe:

Surface Owner: BUREAU OF LAND MANAGEMENT

Other surface owner description:

BIA Local Office:

BOR Local Office:

COE Local Office:

DOD Local Office:

NPS Local Office:

State Local Office:

Military Local Office:

USFWS Local Office:

Other Local Office:

USFS Region:

USFS Forest/Grassland:

USFS Ranger District:

Operator Name: XTO PERMIAN OPERATING LLC

Well Name: POKER LAKE UNIT 18 TWR

Well Number: 153H

Disturbance type: PIPELINE

Describe:

Surface Owner: BUREAU OF LAND MANAGEMENT

Other surface owner description:

BIA Local Office:

BOR Local Office:

COE Local Office:

DOD Local Office:

NPS Local Office:

State Local Office:

Military Local Office:

USFWS Local Office:

Other Local Office:

USFS Region:

USFS Forest/Grassland:

USFS Ranger District:

Disturbance type: OTHER

Describe: Electric

Surface Owner: BUREAU OF LAND MANAGEMENT

Other surface owner description:

BIA Local Office:

BOR Local Office:

COE Local Office:

DOD Local Office:

NPS Local Office:

State Local Office:

Military Local Office:

USFWS Local Office:

Other Local Office:

USFS Region:

USFS Forest/Grassland:

USFS Ranger District:

Operator Name: XTO PERMIAN OPERATING LLC

Well Name: POKER LAKE UNIT 18 TWR

Well Number: 153H

Disturbance type: NEW ACCESS ROAD

Describe:

Surface Owner: BUREAU OF LAND MANAGEMENT

Other surface owner description:

BIA Local Office:

BOR Local Office:

COE Local Office:

DOD Local Office:

NPS Local Office:

State Local Office:

Military Local Office:

USFWS Local Office:

Other Local Office:

USFS Region:

USFS Forest/Grassland:

USFS Ranger District:

Section 12 - Other Information

Right of Way needed? YES

Use APD as ROW? YES

ROW Type(s): 281001 ROW - ROADS, 288100 ROW – O&G Pipeline, 288101 ROW – O&G Facility Sites, 289001 ROW- O&G Well Pad, FLPMA (Powerline)

ROW Applications

SUPO Additional Information: XTO requests a variance from interim reclamation until all drilling and completion activities have been finished on the pads as these are multi-well pads where drilling and completion will be consecutive with the other wells on the pad. Once activities are completed, XTO. will coordinate interim reclamation with the appropriate BLM personnel. The proposed project is within the PA. A MOA payment has been submitted to the Bureau of Land Management.

Use a previously conducted onsite? YES

Previous Onsite information: Well pad locations have been staked. Surveys of the proposed access roads and well pad locations have been completed by Frank Surveying, a registered professional land surveyor. Center stake surveys with access roads have been completed on Federal lands with Colleen Cepero-Rios, Bureau of Land Management Natural Resource Specialist in attendance.

Other SUPO Attachment

Operator Name: XTO PERMIAN OPERATING LLC

Well Name: POKER LAKE UNIT 18 TWR

Well Number: 153H

PLU_18_TWR_Arch_PA_20190523134439.pdf

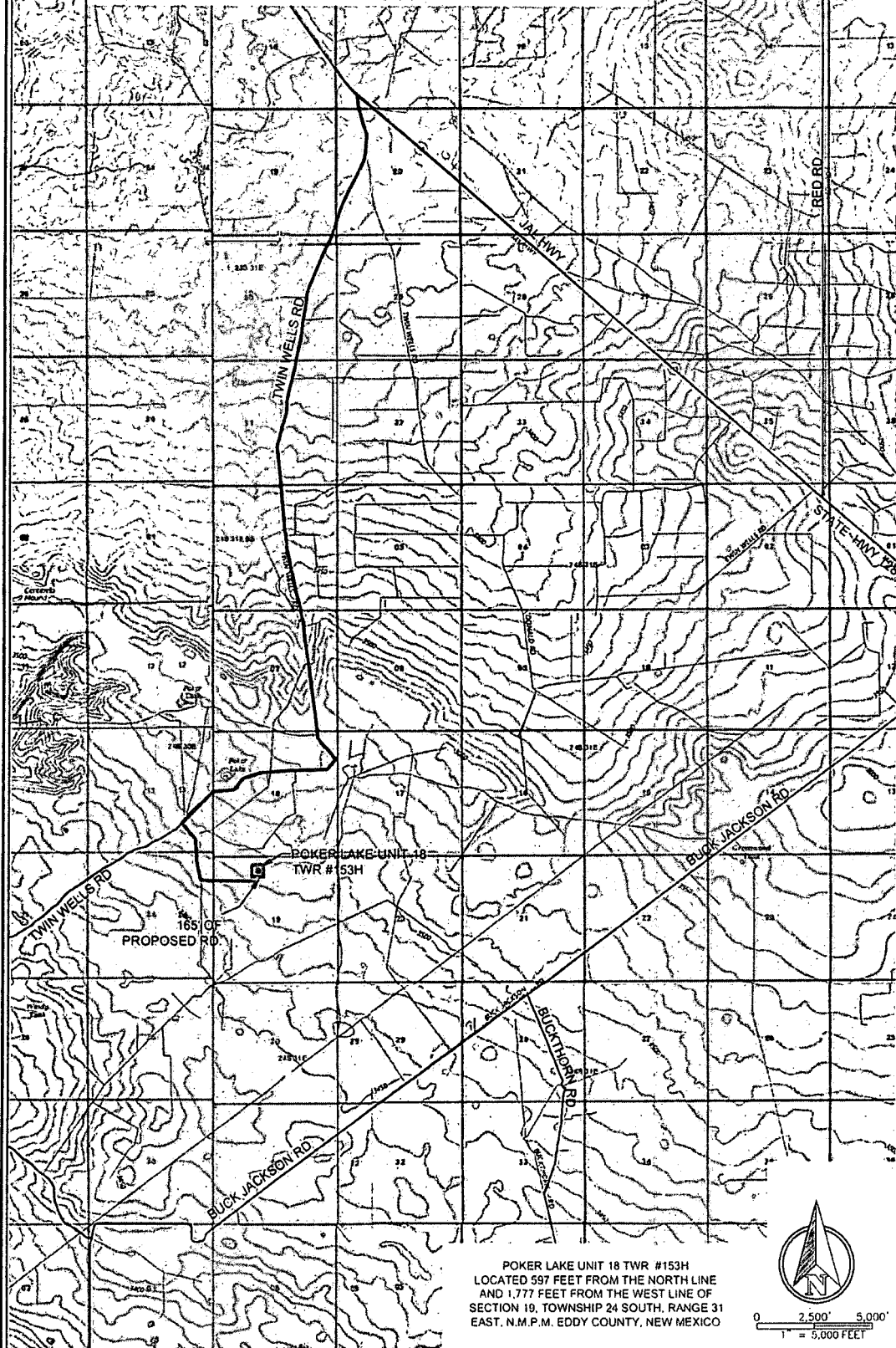
PLU_18_TWR_GS_Arch_20191010071313.pdf

PLU_18_TWR_SUPO_20191010071328.pdf

TOPOGRAPHICAL AND ACCESS ROAD MAP

DIRECTIONS TO THIS LOCATION:

FROM THE INTERSECTION OF JAL HIGHWAY AND TWIN WELLS RD. GO SOUTHWEST ON TWIN WELLS RD APPROX. 7.0 MILES. TURN LEFT (SOUTHEAST) ONTO LEASE RD. AND GO APPROX. 0.5 MILES, ARRIVING AT PROPOSED LOCATION TO THE EAST.



POKER LAKE UNIT 18 TWR #153H
LOCATED 597 FEET FROM THE NORTH LINE
AND 1,777 FEET FROM THE WEST LINE OF
SECTION 19, TOWNSHIP 24 SOUTH, RANGE 31
EAST, N.M.P.M. EDDY COUNTY, NEW MEXICO



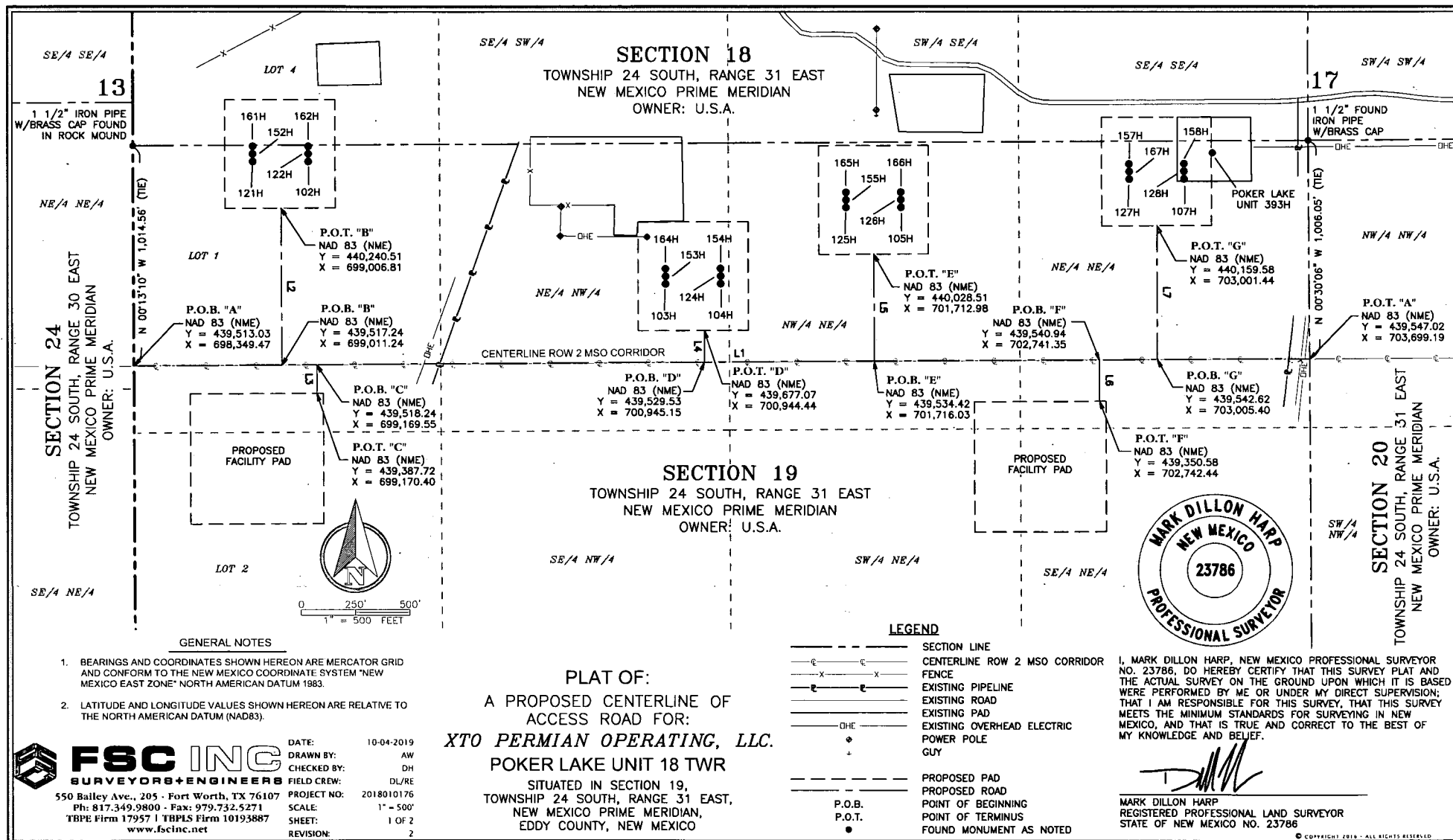
0 2,500' 5,000'
1" = 5,000 FEET



550 Bailey Ave., 205 - Fort Worth, TX 76107
Ph: 817.349.9800 - Fax: 979.732.5271
THPE Firm 17957 | THPLS Firm 10193HR7
www.fbcinc.net
© COPYRIGHT 2019 - ALL RIGHTS RESERVED

DATE: 4-26-2019
DRAWN BY: LB/JC
CHECKED BY: DH
FIELD CREW: RE/RR

PROJECT NO: 2018010183
SCALE: 1" = 5,000'
SHEET: 1 OF 1
REVISION: 0



LINE TABLE "A"

LINE	BEARING	DISTANCE
L1	N 89°38'09" E	5,349.83'

LINE TABLE "B"

L2	N 00°21'02" W	723.29'
----	---------------	---------

LINE TABLE "C"

L3	S 00°22'15" E	130.53'
----	---------------	---------

LINE TABLE "D"

L4	N 00°16'34" W	147.55'
----	---------------	---------

LINE TABLE "E"

L5	N 00°21'12" W	494.10'
----	---------------	---------

LINE TABLE "F"

L6	S 00°19'42" E	190.36'
----	---------------	---------

LINE TABLE "G"

L7	N 00°22'04" W	616.98'
----	---------------	---------

TOTAL LENGTH = 7,652.64 FEET
OR 463.80 RODS

POKER LAKE UNIT 18 TWR PROPOSED ACCESS ROADS DESCRIPTION:

SURVEY OF A STRIP OF LAND 30.0 FEET WIDE AND 7,652.64 FEET, 463.80 RODS, OR 1.45 MILES IN LENGTH CROSSING SECTION 19, TOWNSHIP 24 SOUTH, RANGE 31 EAST, N.M.P.M. EDDY COUNTY, NEW MEXICO AND BEING 15.0 FEET RIGHT AND 15.0 FEET LEFT OF THE ABOVE PLATTED CENTERLINE OF ROAD SURVEY, COMPRISING OF 5.20 ACRES AND DIVIDED IN EACH QUARTER QUARTER SECTION AS FOLLOWS:

LOT 1 SECTION 19 = 2,243.97 FEET = 136.00 RODS = 1.52 ACRES
NE/4 NW/4 SECTION 19 = 1,466.31 FEET = 88.87 RODS = 1.00 ACRES
NW/4 NE/4 SECTION 19 = 1,814.56 FEET = 109.97 RODS = 1.24 ACRES
NE/4 NE/4 SECTION 19 = 2,127.80 FEET = 128.96 RODS = 1.44 ACRES

GENERAL NOTES

- BEARINGS AND COORDINATES SHOWN HEREON ARE MERCATOR GRID AND CONFORM TO THE NEW MEXICO COORDINATE SYSTEM "NEW MEXICO EAST ZONE" NORTH AMERICAN DATUM 1983.
- LATITUDE AND LONGITUDE VALUES SHOWN HEREON ARE RELATIVE TO THE NORTH AMERICAN DATUM (NAD83).

FSC INC
SURVEYORS+ENGINEERS
550 Bailey Ave., 205 - Fort Worth, TX 76107
Ph: 817.349.9800 - Fax: 979.732.5271
TBPE Firm 17957 | TBPLS Firm 10193887
www.fscinc.net

DATE: 10-04-2019
DRAWN BY: AW
CHECKED BY: DH
FIELD CREW: DL/RE
PROJECT NO: 2018010176
SCALE: 1" = 500'
SHEET: 2 OF 2
REVISION: 2

PLAT OF:
A PROPOSED CENTERLINE OF
ACCESS ROAD FOR:
XTO PERMIAN OPERATING, LLC.
POKER LAKE UNIT 18-TWR

SITUATED IN SECTION 19,
TOWNSHIP 24 SOUTH, RANGE 31 EAST,
NEW MEXICO PRIME MERIDIAN,
EDDY COUNTY, NEW MEXICO



I, MARK DILLON HARP, NEW MEXICO PROFESSIONAL SURVEYOR NO. 23786, DO HEREBY CERTIFY THAT THIS SURVEY PLAT AND THE ACTUAL SURVEY ON THE GROUND UPON WHICH IT IS BASED WERE PERFORMED BY ME OR UNDER MY DIRECT SUPERVISION; THAT I AM RESPONSIBLE FOR THIS SURVEY, THAT THIS SURVEY MEETS THE MINIMUM STANDARDS FOR SURVEYING IN NEW MEXICO, AND THAT IS TRUE AND CORRECT TO THE BEST OF MY KNOWLEDGE AND BELIEF.

MARK DILLON HARP
REGISTERED PROFESSIONAL LAND SURVEYOR
STATE OF NEW MEXICO NO. 23786

© COPYRIGHT 2018 - ALL RIGHTS RESERVED

[illegible]

NW/4 NE/4

NE/4 NE/4

N 89°41'49" E 600.00'

N 00°18'02" W 600.00'

PROPOSED 8.26 ACRE
FACILITY PAD+
CENTER OF PAD
1,230' FEL & 1,498' FNL
SECTION 19
T-24-S, R-31-E

S 00°14'45" E 600.00'

S 89°46'20" W 600.00'

P.O.B.

NAD 83 (NME)
Y = 438,750.50
X = 702,775.06

SW/4 NE/4

SE/4 NE/4

SECTION 19TOWNSHIP 24 SOUTH, RANGE 31 EAST
NEW MEXICO PRIME MERIDIAN**POKER LAKE UNIT 18 TWR PROPOSED FACILITY PAD DESCRIPTION:**

Description of a proposed facility pad totaling 8.26 acres and being situated in Section 19, Township 24 South, Range 31 East, New Mexico Prime Meridian, Eddy County, New Mexico and being more particularly described as follows:

BEGINNING at the southeast corner of the proposed facility pad from which a 3/4" found iron pipe with a brass cap, being the east quarter-corner of said Section 19, bears S 48°10'06" E 1,259.49 feet;

THENCE over and across said Section 19, the following courses and distances:

S 89°46'20" W, a distance of 600.00 feet to a point;

N 00°18'02" W, a distance of 600.00 feet to a point;

N 89°41'49" E, a distance of 600.00 feet to a point;

S 00°14'45" E, a distance of 600.00 feet to the POINT OF BEGINNING containing a total of **8.26 acres**, more or less.

Said pad is divided in each quarter-quarter section as follows

NW/4 NE/4 Section 19 = 0.59 OF AN ACRE

NE/4 NE/4 Section 19 = 1.11 ACRES

SW/4 NE/4 Section 19 = 2.28 ACRES

SE/4 NE/4 Section 19 = 4.28 ACRES

S 48°10'06" E 1,259.49' (TIE)

3/4" FOUND IRON
PIPE W/BRASS CAP

SECTION 20
TOWNSHIP 24 SOUTH,
RANGE 31 EAST
NEW MEXICO PRIME
MERIDIAN

LEGEND

--- SECTION LINE
--- PROPOSED FACILITY PAD

P.O.B. POINT OF BEGINNING
● FOUND MONUMENT AS NOTED

GENERAL NOTES

1. BEARINGS AND COORDINATES SHOWN HEREON ARE MERCATOR GRID AND CONFORM TO THE NEW MEXICO COORDINATE SYSTEM "NEW MEXICO EAST ZONE" NORTH AMERICAN DATUM 1983. DISTANCES ARE SURFACE VALUES.
2. LATITUDE AND LONGITUDE VALUES SHOWN HEREON ARE RELATIVE TO THE NORTH AMERICAN DATUM (NAD83).

I, MARK DILLON HARP, NEW MEXICO PROFESSIONAL SURVEYOR NO. 23786, DO HEREBY CERTIFY THAT THIS SURVEY PLAT AND THE ACTUAL SURVEY ON THE GROUND UPON WHICH IT IS BASED WERE PERFORMED BY ME OR UNDER MY DIRECT SUPERVISION; THAT I AM RESPONSIBLE FOR THIS SURVEY, THAT THIS SURVEY MEETS THE MINIMUM STANDARDS FOR SURVEYING IN NEW MEXICO, AND THAT IS TRUE AND CORRECT TO THE BEST OF MY KNOWLEDGE AND BELIEF.



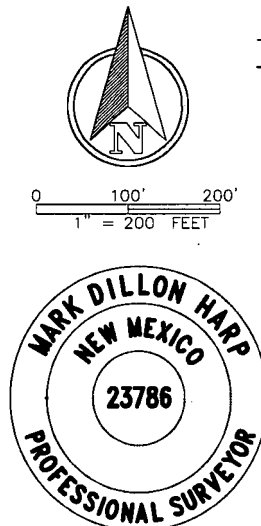
MARK DILLON HARP
REGISTERED PROFESSIONAL LAND SURVEYOR
STATE OF NEW MEXICO NO. 23786



FSC INC
SURVEYORS+ENGINEERS

550 Bailey Ave., 205 - Fort Worth, TX 76107
Ph: 817.349.9800 - Fax: 979.732.5271
TBPE Firm 17957 | TBPLS Firm 10193887
www.fscinc.net

© COPYRIGHT 2016 - ALL RIGHTS RESERVED



XTO PERMIAN OPERATING, LLC.

**PROPOSED FACILITY PAD
POKER LAKE UNIT 18 TWR**

SURVEY FOR A PROPOSED FACILITY PAD
SITUATED IN THE NE/4 OF SECTION 19,
TOWNSHIP 24 SOUTH, RANGE 31 EAST,
N.M.P.M., EDDY COUNTY, NEW MEXICO

DATE:	07-29-2018	PROJECT NO:	2018010176
DRAWN BY:	AW	SCALE:	1" = 200'
CHECKED BY:	DH	SHEET:	1 OF 1
FIELD CREW:	RE	REVISION:	NO