

DISTRICT I
1625 N. French Dr., Hobbs, NM 88240
Phone: (575) 393-6161 Fax: (575) 393-0720

DISTRICT II
811 S. First St., Artesia, NM 88210
Phone: (575) 748-1283 Fax: (575) 748-9720

DISTRICT III
1000 Rio Brazos Road, Aztec, NM 87410
Phone: (505) 334-6178 Fax: (505) 334-6170

DISTRICT IV
1220 S. St. Francis Dr., Santa Fe, NM 87505
Phone: (505) 476-3460 Fax: (505) 476-3462

State of New Mexico
Energy, Minerals & Natural Resources Department
OIL CONSERVATION DIVISION
1220 South St. Francis Dr.
Santa Fe, New Mexico 87505

RECEIVED

JAN 02 2020

Form C-102
Revised August 1, 2011
Submit one copy to appropriate District Office

DISTRICT IV ARTESIA O.C.D.
AMENDED REPORT
(Infill noted & dedication changed)

WELL LOCATION AND ACREAGE DEDICATION PLAT

| | | |
|-----------------------------------|--|---|
| API Number 30-005-64348 | Pool Code 61570 | Pool Name TWIN LAKE; SAN ANDRES (ASSOC) |
| Property Code 325485 | Property Name HELLCAT | Well Number 3H |
| OGRID No. 328666 | Operator Name TAMAROA OPERATING, LLC | Elevation 3932' |

| UL or lot No. | Section | Township | Range | Lot Idn | Feet from the | North/South line | Feet from the | East/West line | County |
|---------------|---------|----------|-------|---------|---------------|------------------|---------------|----------------|--------|
| G | 25 | 8-S | 28-E | | 2540 | NORTH | 2240 | EAST | CHAVES |

| UL or lot No. | Section | Township | Range | Lot Idn | Feet from the | North/South line | Feet from the | East/West line | County |
|---------------|---------|----------|-------|---------|---------------|------------------|---------------|----------------|--------|
| J | 24 | 8-S | 28-E | | 2540 | SOUTH | 2240 | EAST | CHAVES |

| | | | |
|----------------------------------|-----------------------------|--------------------|-----------|
| Dedicated Acres 320.00 | Joint or Infill Y | Consolidation Code | Order No. |
|----------------------------------|-----------------------------|--------------------|-----------|

NO ALLOWABLE WILL BE ASSIGNED TO THIS COMPLETION UNTIL ALL INTERESTS HAVE BEEN CONSOLIDATED OR A NON-STANDARD UNIT HAS BEEN APPROVED BY THE DIVISION

SCALE: 1"=2000'

CORNER COORDINATES TABLE
NAD 27 NME

A - Y= 942625.7 N, X= 588957.8 E
B - Y= 942631.3 N, X= 590278.9 E
C - Y= 945273.3 N, X= 590287.1 E
D - Y= 945267.5 N, X= 588964.4 E
E - Y= 947907.3 N, X= 588970.8 E
F - Y= 947913.4 N, X= 590295.1 E

CORNER COORDINATES TABLE
NAD 83 NME

A - Y= 942690.4 N, X= 630135.4 E
B - Y= 942695.9 N, X= 631456.5 E
C - Y= 945337.9 N, X= 631464.6 E
D - Y= 945332.1 N, X= 630142.0 E
E - Y= 947971.9 N, X= 630148.4 E
F - Y= 947978.0 N, X= 631472.7 E

B.H. AND
LAST TAKE POINT
NAD 83 NME
Y= 947873.3 N
X= 630557.2 E
LAT.=33.605234° N
LONG.=104.040298° W

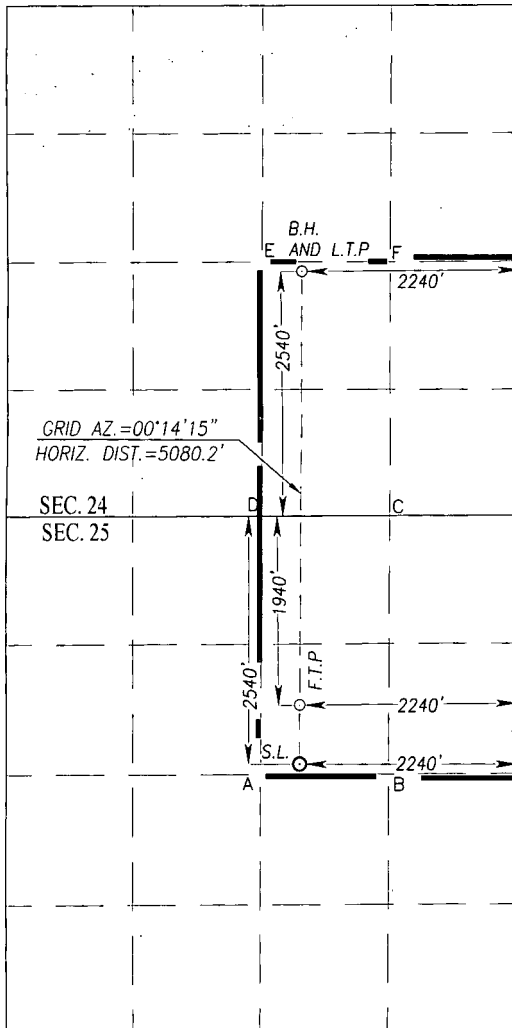
FIRST TAKE POINT
NAD 83 NME
Y= 943394.4 N
X= 630538.6 E
LAT.=33.592925° N
LONG.=104.040400° W

GEODETIC COORDINATES
NAD 83 NME
SURFACE LOCATION
Y= 942794.5 N
X= 630536.1 E
LAT.=33.591276° N
LONG.=104.040414° W

B.H. AND
LAST TAKE POINT
NAD 27 NME
Y= 947808.7 N
X= 589379.6 E
LAT.=33.605139° N
LONG.=104.039779° W

FIRST TAKE POINT
NAD 27 NME
Y= 943329.8 N
X= 589361.0 E
LAT.=33.592829° N
LONG.=104.039882° W

GEODETIC COORDINATES
NAD 27 NME
SURFACE LOCATION
Y= 942729.9 N
X= 589358.5 E
LAT.=33.591180° N
LONG.=104.039896° W



OPERATOR CERTIFICATION

I hereby certify that the information herein is true and complete to the best of my knowledge and belief, and that this organization either owns a working interest or unleased mineral interest in the land including the proposed bottom hole location or has a right to drill this well at this location pursuant to a contract with an owner of such mineral or working interest, or to a voluntary pooling agreement or a compulsory pooling order heretofore entered by the division.

Brian Wood

12-30-19

Signature

Date

BRIAN WOOD

Printed Name

brian@permitswest.com

E-mail Address

505 466-8120

SURVEYOR CERTIFICATION

I hereby certify that the well location shown on this plat was plotted from field notes of actual surveys made by me or under my supervision, and that the same is true and correct to the best of my belief.

Ronald J. Eidson
Date of Survey
Signature and Seal of Professional Surveyor

3239

REGISTERED PROFESSIONAL SURVEYOR

Ronald J. Eidson

12/11/2019

Certificate Number

Gary G. Eidson 12641

Ronald J. Eidson 3239

LSL

JWSC W.O.: 19.11.1159

RWP 1-7-2020