

RECEIVED

DEC 19 2019

District I
1675 N. French Dr., Hobbs, NM 88240
Phone: (575) 393-6161 Fax: (575) 393-4720
District II
811 S. First St., Artesia, NM 88210
Phone: (575) 748-1283 Fax: (575) 748-9720
District III
1000 Rio Brazos Road, Aztec, NM 87410
Phone: (505) 334-6178 Fax: (505) 334-6170
District IV
1230 S. St. Francis Dr., Santa Fe, NM 87503
Phone: (505) 476-3460 Fax: (505) 476-3462

State of New Mexico
Energy, Minerals & Natural Resources Department
OIL CONSERVATION DISTRICT-ARTESIA CO.
1220 South St. Francis Dr.
Santa Fe, NM 87505

Form C-102
Revised August 1, 2011
Submit one copy to appropriate
District Office

AMENDED REPORT

30-015-46563

WELL LOCATION AND ACREAGE DEDICATION PLAT

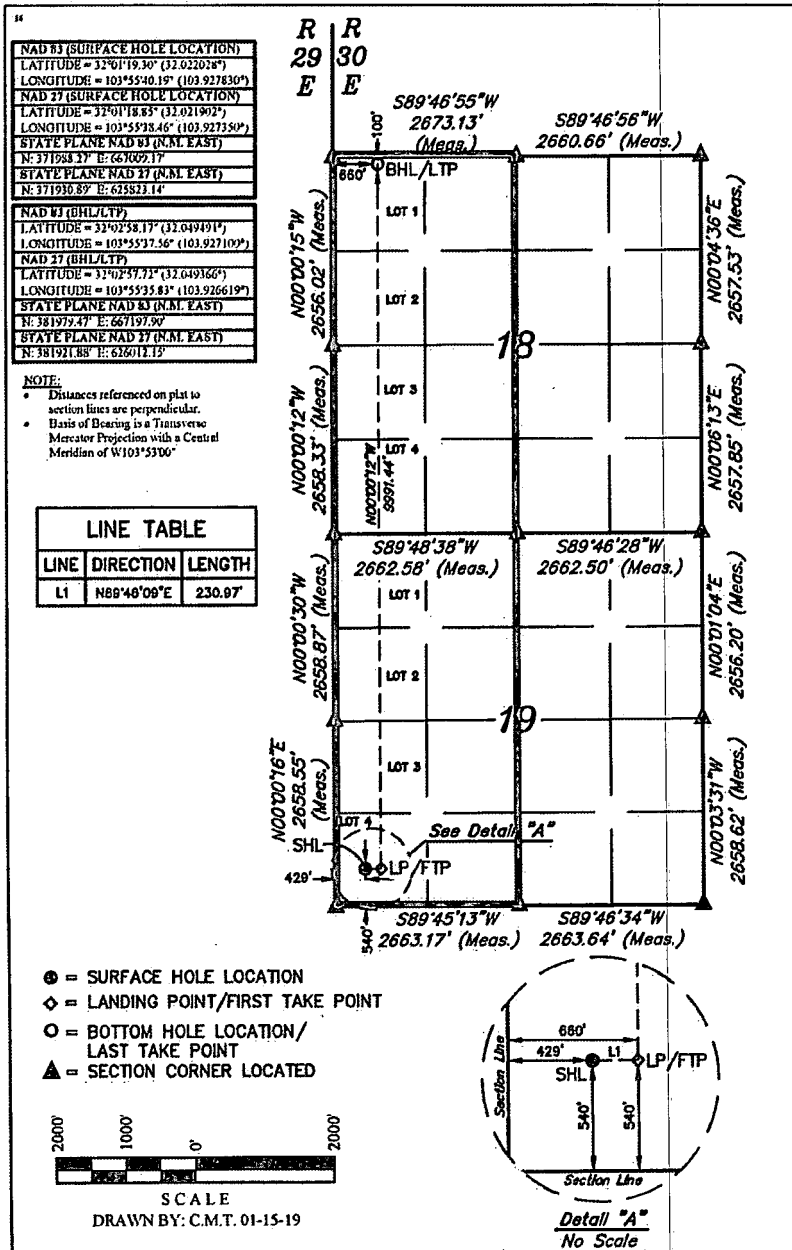
1 APN Number 30-025	2 Pool Code 983241	3 Pool Name Wildcat, Bonespring	4 Well Number W2015603
5 Property Code 326744	6 Property Name TAR HEEL 19-18 FEDERAL COM	7 Well Number 4H	8 Elevation 3016.8
9 OCRID No. 215099	10 Operator Name CIMAREX ENERGY CO.		

S2629 ASD

"Surface Location									
UL or lot no. LOT 4	Section 19	Township 26S	Range 30E	Lot Idn	Feet from the 540	North/South line SOUTH	Feet from the 429	East/West line WEST	County EDDY

"Bottom Hole Location If Different From Surface									
UL or lot no. LOT 1	Section 18	Township 26S	Range 30E	Lot Idn	Feet from the 100	North/South line NORTH	Feet from the 660	East/West line WEST	County EDDY
11 Dedicated Acres 640.92		12 Joint or Infill		13 Consolidation Code		14 Order No.			

No allowable will be assigned to this completion until all interests have been consolidated or a non-standard unit has been approved by the division.



NAD 83 (SURFACE HOLE LOCATION)	
LATITUDE = 32°01'19.30" (32.022028°)	LONGITUDE = 103°55'40.19" (103.927830°)
NAD 83 (SURFACE HOLE LOCATION)	
LATITUDE = 32°01'18.83" (32.021902°)	LONGITUDE = 103°55'38.46" (103.927350°)
STATE PLANE NAD 83 (N.M. EAST)	
N: 371938.17' E: 667009.17'	
STATE PLANE NAD 83 (N.M. EAST)	
N: 371930.89' E: 625823.14'	
NAD 83 (BHL/LTP)	
LATITUDE = 32°02'58.17" (32.049491°)	LONGITUDE = 103°55'37.56" (103.927109°)
NAD 83 (BHL/LTP)	
LATITUDE = 32°02'57.71" (32.049166°)	LONGITUDE = 103°55'35.83" (103.926619°)
STATE PLANE NAD 83 (N.M. EAST)	
N: 381979.47' E: 667197.90'	
STATE PLANE NAD 83 (N.M. EAST)	
N: 381921.38' E: 626012.13'	

NOTE:

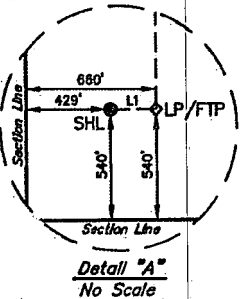
- Distances referenced on plat to section lines are perpendicular.
- Basis of Bearing is a Transverse Mercator Projection with a Central Meridian of W103°53'00"

LINE TABLE		
LINE	DIRECTION	LENGTH
L1	N89°46'09"E	230.97'

- = SURFACE HOLE LOCATION
- ◆ = LANDING POINT/FIRST TAKE POINT
- = BOTTOM HOLE LOCATION/LAST TAKE POINT
- ▲ = SECTION CORNER LOCATED



SCALE
DRAWN BY: C.M.T. 01-15-19



"OPERATOR CERTIFICATION"

I hereby certify that the information contained herein is true and complete to the best of my knowledge and belief, and that this organization either owns a working interest or unless mineral interest in the land including the proposed bottom hole location or has a right to drill this well at this location pursuant to a contract with an owner of such a mineral or working interest, or to a voluntary pooling agreement or a compulsory pooling order heretofore entered by the division.

Signature: *[Signature]* Date: 2/20/19

Printed Name: Hope Knauls

E-mail Address: hknauls@cimarex.com

"SURVEYOR CERTIFICATION"

I hereby certify that the well location shown on this plat was plotted from field notes of actual survey made by me or under my supervision, and that the same is true and correct to the best of my belief.

November 19, 2018

Date of Survey
Signature and Seal of Professional Surveyor:

Certificate Number:

RWP 1-6-2020