

RECEIVED

UNITED STATES  
DEPARTMENT OF THE INTERIOR  
BUREAU OF LAND MANAGEMENT

Operator Copy

FORM APPROVED  
OMB No. 1004-0137  
Expires: July 31, 2010

## WELL COMPLETION OR RECOMPLETION REPORT AND LOG

5. Lease Serial No.  
NMNM1003351a. Type of Completion ☒ Gas Well ☐ Dry ☐ Other  
b. Type of Completion ☒ New Well ☐ Work Over ☐ Deepen ☐ Plug Back ☐ Diff. Resvr.  
Other \_\_\_\_\_

6. If Indian, Allottee or Tribe Name

7. Unit or CA Agreement Name and No.

2. Name of Operator  
BTA OIL PRODUCERS LLC  
Contact: KATY REDDELL  
E-Mail: kreddell@btaoil.com8. Lease Name and Well No.  
OGDEN 20509 32-29 FED COM 5H3. Address 104 S. PECOS  
MIDLAND, TX 797013a. Phone No. (include area code)  
Ph: 432-682-37539. API Well No.  
30-015-44339-00-S14. Location of Well (Report location clearly and in accordance with Federal requirements)\*  
Sec 32 T23S R28E Mer NMP  
At surface SENW 2472FNL 1357FWL 32.261967 N Lat, 104.113770 W Lon  
Sec 32 T23S R28E Mer NMP  
At top prod interval reported below SENW 2472FNL 1357FWL 32.261967 N Lat, 104.113770 W Lon  
Sec 29 T23S R28E Mer NMP  
At total depth NENW 38FNL 1964FWL10. Field and Pool, or Exploratory  
PURPLE SAGE-WOLFCAMP (GAS)11. Sec., T., R., M., or Block and Survey  
or Area Sec 32 T23S R28E Mer NMP12. County or Parish  
EDDY13. State  
NM14. Date Spudded  
02/26/201915. Date T.D. Reached  
04/06/201916. Date Completed  
☐ D & A ☐ Ready to Prod.  
07/23/201917. Elevations (DF, KB, RT, GL)\*  
3107 GL18. Total Depth: MD  
TVD 17155  
951019. Plug Back T.D.: MD  
TVD20. Depth Bridge Plug Set: MD  
TVD21. Type Electric & Other Mechanical Logs Run (Submit copy of each)  
MWDGAMMARAY22. Was well cored? ☒ No ☐ Yes (Submit analysis)  
Was DST run? ☒ No ☐ Yes (Submit analysis)  
Directional Survey? ☐ No ☒ Yes (Submit analysis)

## 23. Casing and Liner Record (Report all strings set in well)

Hole Size	Size/Grade	Wt. (#/ft.)	Top (MD)	Bottom (MD)	Stage Cementer Depth	No. of Sks. & Type of Cement	Slurry Vol. (BBL)	Cement Top*	Amount Pulled
17.500	13.375 J-55	54.5		360		400		0	
12.250	9.625 J-55	36.0		2522		810		0	
8.750	7.000 P-110	29.0		9585		1135		907	
6.125	4.500 P-110	13.5	8912	17155		545		0	

## 24. Tubing Record

Size	Depth Set (MD)	Packer Depth (MD)	Size	Depth Set (MD)	Packer Depth (MD)	Size	Depth Set (MD)	Packer Depth (MD)

## 25. Producing Intervals

## 26. Perforation Record

Formation	Top	Bottom	Perforated Interval	Size	No. Holes	Perf. Status
A) WOLFCAMP	9383		9700 TO 16980			FRAC
B)						
C)						
D)						

## 27. Acid, Fracture, Treatment, Cement Squeeze, Etc.

Depth Interval	Amount and Type of Material
9700 TO 16980	385,609 BBLs FLUID; 18,330,693 #S 100MESH AND 40/70 SAND.

## 28. Production - Interval A

Date First Produced	Test Date	Hours Tested	Test Production	Oil BBL	Gas MCF	Water BBL	Oil Gravity Corr. API	Gas Gravity	Production Method
07/23/2019	08/01/2019	24	→	1080.0	1879.0	4167.0	41.6		FLows FROM WELL
Choke Size	Tbg. Press. Flwg.	Csg. Press.	24 Hr. Rate	Oil BBL	Gas MCF	Water BBL	Gas:Oil Ratio	Well Status	
38/64	SI 1550	1450.0	→	1080	1879	4167		PGW	

## 28a. Production - Interval B

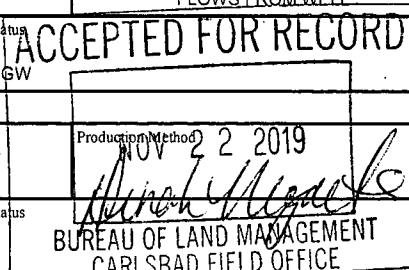
Date First Produced	Test Date	Hours Tested	Test Production	Oil BBL	Gas MCF	Water BBL	Oil Gravity Corr. API	Gas Gravity	Production Method
			→						
Choke Size	Tbg. Press. Flwg.	Csg. Press.	24 Hr. Rate	Oil BBL	Gas MCF	Water BBL	Gas:Oil Ratio	Well Status	
	SI		→						

(See Instructions and spaces for additional data on reverse side)

ELECTRONIC SUBMISSION #481337 VERIFIED BY THE BLM WELL INFORMATION SYSTEM

\*\* BLM REVISED \*\* BLM REVISED \*\* BLM REVISED \*\* BLM REVISED \*\* BLM REVISED \*\*

Reclamation Due: 1/23/2020



## 28b. Production - Interval C

Date First Produced	Test Date	Hours Tested	Test Production	Oil BBL	Gas MCF	Water BBL	Oil Gravity Corr. API	Gas Gravity	Production Method
			→						
Choke Size	Tbg. Press. Flwg. SI	Csg. Press.	24 Hr. Rate	Oil BBL	Gas MCF	Water BBL	Gas:Oil Ratio	Well Status	
			→						

## 28c. Production - Interval D

Date First Produced	Test Date	Hours Tested	Test Production	Oil BBL	Gas MCF	Water BBL	Oil Gravity Corr. API	Gas Gravity	Production Method
			→						
Choke Size	Tbg. Press. Flwg. SI	Csg. Press.	24 Hr. Rate	Oil BBL	Gas MCF	Water BBL	Gas:Oil Ratio	Well Status	
			→						

29. Disposition of Gas(Sold, used for fuel, vented, etc.)  
SOLD

## 30. Summary of Porous Zones (Include Aquifers):

Show all important zones of porosity and contents thereof: Cored intervals and all drill-stem tests, including depth interval tested, cushion used, time tool open, flowing and shut-in pressures and recoveries.

## 31. Formation (Log) Markers

Formation	Top	Bottom	Descriptions, Contents, etc.	Name	Top Meas. Depth
WOLFCAMP	9383			RUSTLER TOP SALT BASE OF SALT DELAWARE BELL CANYON CHERRY CANYON BRUSHY CANYON BONE SPRING LIME	289 950 2234 2530 2557 3335 4497 6120

## 32. Additional remarks (include plugging procedure):

FIRST BONE SPRING 7055  
SECOND BONE SPRING 7826  
THIRD BONE SPRING CARB 8803  
THIRD BONE SPRING 9040  
WOLFCAMP 9383

## 33. Circle enclosed attachments:

- |   |                    |               |                       |
|---|--------------------|---------------|-----------------------|
| 1. Electrical/Mechanical Logs (1 full set req'd.)     | 2. Geologic Report | 3. DST Report | 4. Directional Survey |
| 5. Sundry Notice for plugging and cement verification | 6. Core Analysis   | 7. Other:     |                       |

## 34. I hereby certify that the foregoing and attached information is complete and correct as determined from all available records (see attached instructions):

Electronic Submission #481337 Verified by the BLM Well Information System.  
For BTA OIL PRODUCERS LLC, sent to the Carlsbad  
Committed to AFMSS for processing by DINAH NEGRETE on 11/18/2019 (20DCN0026SE)

Name (please print) KATY REDDELL

Title REGULATORY ANALYST

Signature (Electronic Submission)

Date 08/30/2019

Title 18 U.S.C. Section 1001 and Title 43 U.S.C. Section 1212, make it a crime for any person knowingly and willfully to make to any department or agency of the United States any false, fictitious or fraudulent statements or representations as to any matter within its jurisdiction.

**\*\* REVISED \*\* REVISED \*\* REVISED \*\* REVISED \*\* REVISED \*\* REVISED \*\* REVISED \*\* REVISED \*\***

**DISTRICT I**  
1625 N. French Dr., Hobbs, NM 88240  
Phone: (575) 393-6161 Fax: (575) 393-0720

**DISTRICT II**  
811 S. First St., Artesia, NM 88210  
Phone: (575) 748-1283 Fax: (575) 748-9720

**DISTRICT III**  
1000 Rio Brazos Road, Aztec, NM 87410  
Phone: (505) 334-6178 Fax: (505) 334-6170

**DISTRICT IV**  
1220 S. St. Francis Dr., Santa Fe, NM 87505  
Phone: (505) 476-3460 Fax: (505) 476-3462

State of New Mexico  
Energy, Minerals & Natural Resources Department  
**OIL CONSERVATION DIVISION**  
1220 South St. Francis Dr.  
Santa Fe, New Mexico 87505

Form C-102  
Revised August 1, 2011  
Submit one copy to appropriate  
District Office

☒ AMENDED REPORT  
AS DRILLED

**WELL LOCATION AND ACREAGE DEDICATION PLAT**

API Number <b>30-015-44339</b>	Pool Code <b>98220</b>	Pool Name <b>PURPLE SAGE (WOLFCAMP) GAS</b>
Property Code <b>320813</b>	Property Name <b>OGDEN 20509 32-29 FEDERAL COM</b>	Well Number <b>5H</b>
OGRID No. <b>260297</b>	Operator Name <b>BTA OIL PRODUCERS, LLC</b>	Elevation <b>3107'</b>

Surface Location

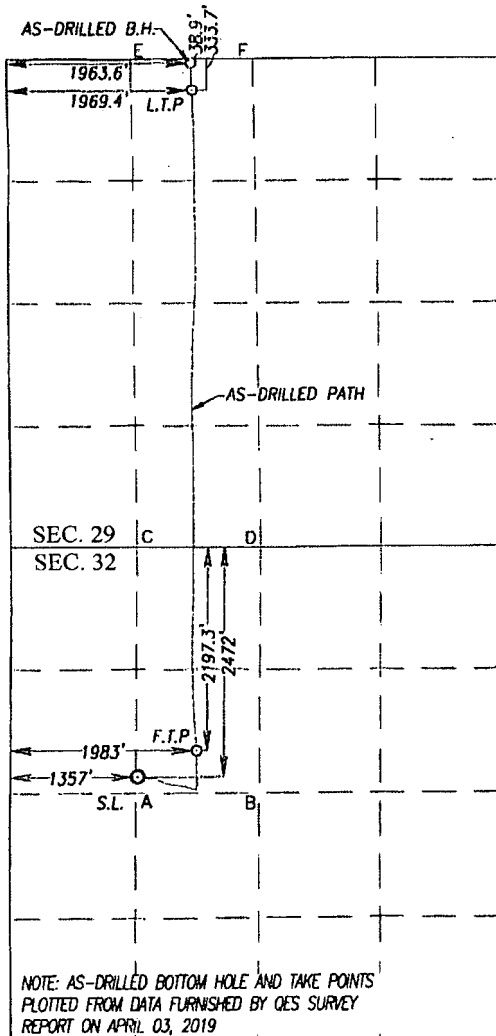
UL or lot No.	Section	Township	Range	Lot Idn	Feet from the	North/South line	Feet from the	East/West line	County
<b>F</b>	<b>32</b>	<b>23-S</b>	<b>28-E</b>		<b>2472</b>	<b>NORTH</b>	<b>1357</b>	<b>WEST</b>	<b>EDDY</b>

As-Drilled Bottom Hole Location If Different From Surface

UL or lot No.	Section	Township	Range	Lot Idn	Feet from the	North/South line	Feet from the	East/West line	County
<b>C</b>	<b>29</b>	<b>23-S</b>	<b>28-E</b>		<b>38.9</b>	<b>NORTH</b>	<b>1963.6</b>	<b>WEST</b>	<b>EDDY</b>

Dedicated Acres	Joint or Infill	Consolidation Code	Order No.
<b>240</b>			

NO ALLOWABLE WILL BE ASSIGNED TO THIS COMPLETION UNTIL ALL INTERESTS HAVE BEEN CONSOLIDATED OR A NON-STANDARD UNIT HAS BEEN APPROVED BY THE DIVISION



SCALE: 1"=2000'

<b>GEODETTIC COORDINATES</b> <b>NAD 83 NME</b> <b>AS-DRILLED BOTTOM</b> <b>HOLE LOCATION</b> <b>Y= 466833.9 N</b> <b>X= 609807.1 E</b> <b>LAT.=32.283206° N</b> <b>LONG.=104.111772° W</b> <b>GEODETTIC COORDINATES</b> <b>NAD 83 NME</b> <b>LAST TAKE POINT</b> <b>Y= 466539.2 N</b> <b>X= 609814.5 E</b> <b>LAT.=32.282396° N</b> <b>LONG.=104.111750° W</b>	<b>GEODETTIC COORDINATES</b> <b>NAD 27 NME</b> <b>AS-DRILLED BOTTOM</b> <b>HOLE LOCATION</b> <b>Y= 466775.0 N</b> <b>X= 568624.4 E</b> <b>LAT.=32.283086° N</b> <b>LONG.=104.111276° W</b> <b>GEODETTIC COORDINATES</b> <b>NAD 27 NME</b> <b>LAST TAKE POINT</b> <b>Y= 466480.2 N</b> <b>X= 568631.7 E</b> <b>LAT.=32.282276° N</b> <b>LONG.=104.111254° W</b>
--	--

**CORNER COORDINATES TABLE**  
NAD 27 NME

A - Y= 458878.7 N, X= 568001.6 E	B - Y= 458880.6 N, X= 569337.6 E
C - Y= 461518.4 N, X= 568027.7 E	D - Y= 461515.2 N, X= 569367.1 E
E - Y= 466812.1 N, X= 567978.9 E	F - Y= 466815.6 N, X= 569296.7 E

**CORNER COORDINATES TABLE**  
NAD 83 NME

A - Y= 458937.5 N, X= 609184.5 E	B - Y= 458939.3 N, X= 610520.5 E
C - Y= 461577.2 N, X= 609210.5 E	D - Y= 461574.1 N, X= 610550.0 E
E - Y= 466871.1 N, X= 609161.6 E	F - Y= 466874.6 N, X= 610479.4 E

**FIRST TAKE POINT**  
NAD 83 NME  
Y= 459379.5 N  
X= 609834.9 E  
LAT.=32.262715° N  
LONG.=104.111731° W

**FIRST TAKE POINT**  
NAD 27 NME  
Y= 459320.7 N  
X= 568652.0 E  
LAT.=32.262594° N  
LONG.=104.111236° W

**SURFACE LOCATION**  
NAD 83 NME  
Y= 459105.8 N  
X= 609206.7 E  
LAT.=32.261966° N  
LONG.=104.113766° W

**SURFACE LOCATION**  
NAD 27 NME  
Y= 459047.1 N  
X= 568023.8 E  
LAT.=32.261846° N  
LONG.=104.113270° W

**OPERATOR CERTIFICATION**

I hereby certify that the information herein is true and complete to the best of my knowledge and belief, and that this organization either owns a working interest or unleased mineral interest in the land including the proposed bottom hole location or has a right to drill this well at this location pursuant to a contract with an owner of such mineral or working interest, or to a voluntary pooling agreement or a compulsory pooling order heretofore entered by the division

**KATY REDDELL 9/20/19**

Signature Date

**KATY REDDELL**

Printed Name

**kreddell@btaoil.com**

E-mail Address

**SURVEYOR CERTIFICATION**

I hereby certify that the well location shown on this plat was plotted from field notes of actual surveys made by me or under my supervision, and that the same is true and correct to the best of my belief.

**NOVEMBER 30, 2016**

Date of Survey Signature of Surveyor

**RONALD J. EIDSON**  
NEW MEXICO  
REGISTERED SURVEYOR  
3239  
Certificate Number  
ACK REL W.O.:17130146 REV 9/19/19 JWSC W.O.: 19 13 0925