

RECEIVED

**District I**  
1625 N. French Dr., Hobbs, NM 88240  
Phone: (575) 393-6161 Fax: (575) 393-0720

**District II**  
811 S. First St., Artesia, NM 88210  
Phone: (575) 748-1283 Fax: (575) 748-9720

**District III**  
1000 Rio Brazos Road, Artesia, NM 88210  
Phone: (505) 334-6178 Fax: (505) 334-6170

**District IV**  
1220 S. St. Francis Dr., Santa Fe, NM 87505  
Phone: (505) 476-3460 Fax: (505) 476-3462

## State of New Mexico

Minerals &amp; Natural Resources Department

## OIL CONSERVATION DIVISION

1220 South St. Francis Dr.  
Santa Fe, NM 87505

Form C-102

Revised August 1, 2011

Submit one copy to appropriate District Office

☐ AMENDED REPORT

## WELL LOCATION AND ACREAGE DEDICATION PLAT

<sup>1</sup> API Number <b>30-015-46573</b>	<sup>2</sup> Pool Code <b>98220</b>	<sup>3</sup> Pool Name <b>PURPLE SAGE; WOLFCAMP</b>
<sup>4</sup> Property Code <b>326779</b>	<sup>5</sup> Property Name <b>PAPAS FRITAS 27-22 FED COM</b>	<sup>6</sup> Well Number <b>621H</b>
<sup>7</sup> OGRID No. <b>6137</b>	<sup>8</sup> Operator Name <b>DEVON ENERGY PRODUCTION COMPANY, L.P.</b>	<sup>9</sup> Elevation <b>3021.7'</b>

<sup>10</sup> Surface Location

UL or lot no.	Section	Township	Range	Lot Idn	Feet from the	North/South line	Feet from the	East/West line	County
D	34	23-S	29-E		102	NORTH	993	WEST	EDDY

<sup>11</sup> Bottom Hole Location If Different From Surface

UL or lot no.	Section	Township	Range	Lot Idn	Feet from the	North/South line	Feet from the	East/West line	County
D	22	23-S	29-E		20	NORTH	1254	WEST	EDDY

<sup>12</sup> Dedicated Acres	<sup>13</sup> Joint or Infill	<sup>14</sup> Consolidation Code	<sup>15</sup> Order No.
640			

No allowable will be assigned to this completion until all interests have been consolidated or a non-standard unit has been approved by the division.

16

**PAPAS FRITAS  
27-22 FED COM 621H**  
ELEV: 3021.7'  
LAT: 32.268311°  
LON: 103.977975°  
N: 461526.49  
E: 651172.73

**FIRST TAKE POINT**  
LAT: 32.268866°  
LON: 103.977135°  
N: 461729.32  
E: 651431.48

**LAST TAKE POINT**  
LAT: 32.297564°  
LON: 103.977140°  
N: 472169.22  
E: 651395.43

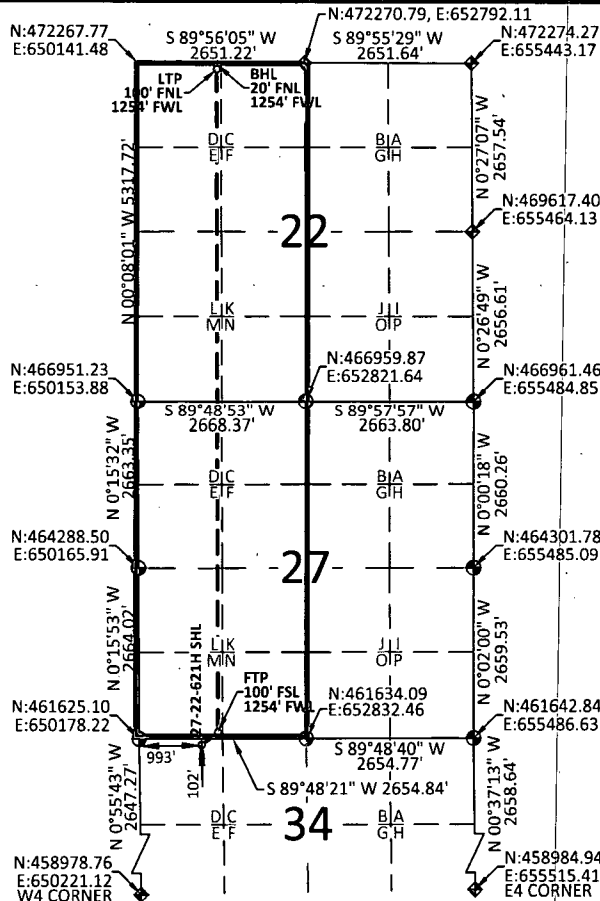
**BOTTOM HOLE LOCATION**  
LAT: 32.297784°  
LON: 103.977140°  
N: 472249.20  
E: 651395.24

## Standard Horizontal Spacing Unit

- 3" USGLO BRASS CAP ON 2.5" IRON PIPE
- 2" USGLO BRASS CAP ON 2" IRON PIPE

## NOTES:

- BEARINGS SHOWN ARE GRID BASED ON THE NEW MEXICO STATE PLANE EAST ZONE COORDINATE SYSTEM (3001), NAD 83 (2011), BASED FROM GPS OBSERVATIONS, OCCUPYING A WHS CONTROL POINT (5/8" REBAR), LOCATED AT NORTH: 456034.443, EAST: 653560.641, ELEVATION: 3101.373, DETERMINED BY AN OPUS SOLUTION ON DECEMBER 3RD, 2018.
- DISTANCES DEPICTED HEREON ARE REPORTED AS GROUND DISTANCE IN US SURVEY FEET USING A COMBINED SCALE FACTOR OF 1.000220979
- ELEVATIONS ARE OF NAVD 88 COMPUTED USING GEOID 128.

<sup>17</sup> OPERATOR CERTIFICATION

I hereby certify that the information contained herein is true and complete to the best of my knowledge and belief, and that this organization either owns a working interest or unleased mineral interest in the land including the proposed bottom hole location or has a right to drill this well at this location pursuant to a contract with an owner of such a mineral or working interest, or to a voluntary pooling agreement or a compulsory pooling order heretofore entered by the division.

*Erin Workman* 06/16/19  
Signature Date

Erin Workman  
Printed Name  
Erin.workman@dmv.com  
E-mail Address

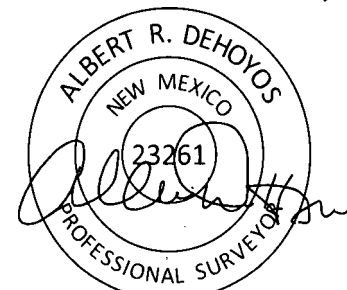
<sup>18</sup> SURVEYOR CERTIFICATION

I hereby certify that the well location shown on this plat was plotted from field notes of actual surveys made by me or under my supervision, and that the same is true and correct to the best of my belief.

03/06/2019

Date of Survey

Signature and Seal of Professional Surveyor:



Certificate No. 23261 Albert Dehoyos

Drawn by: TMW Checked by: ARD Date: 04/29/2019

RWI-9-2020

NSL

RECEIVED

DEC 26 2019

Intent ☒As Drilled ☐

DISTRICT 7 - ARTESIA O.C.D.

API #

Operator Name: DEVON ENERGY PRODUCTION COMPANY, L.P.	Property Name: PAPAS FRITAS 27-22 FED COM	Well Number 621H
---	--	---------------------

## Kick Off Point (KOP)

UL	Section 27	Township 23S	Range 29E	Lot	Feet 50	From N/S SOUTH	Feet 1254	From E/W WEST	County EDDY
Latitude 32.268727					Longitude -103.977129				NAD 83

## First Take Point (FTP)

UL M	Section 27	Township 23-S	Range 29-E	Lot	Feet 100	From N/S SOUTH	Feet 1254	From E/W WEST	County EDDY
Latitude 32.268866°					Longitude 103.977135°				NAD 83

## Last Take Point (LTP)

UL D	Section 22	Township 23-S	Range 29-E	Lot	Feet 100	From N/S NORTH	Feet 1254	From E/W WEST	County EDDY
Latitude 32.297564°					Longitude -103.977140°				NAD 83

Is this well the defining well for the Horizontal Spacing Unit?

☒ Y

Is this well an infill well?

☐ N

If infill is yes provide API if available, Operator name and well number for Defining well for Horizontal Spacing Unit.

API #

Operator Name:	Property Name:	Well Number
----------------	----------------	-------------

KZ 06/29/2018

NSL