

UNITED STATES
DEPARTMENT OF THE INTERIOR
BUREAU OF LAND MANAGEMENTFORM APPROVED
OMB No. 1004-0137
Expires: July 31, 2010

WELL COMPLETION OR RECOMPLETION REPORT AND LOG

5. Lease Serial No.
NMNM88139

6. If Indian, Allottee or Tribe Name

7. Unit or CA Agreement Name and No.
NMNM139613

8. Lease Name and Well No.
CORRAL FLY 35-26 FEDERAL COM 35H

9. API Well No.
30-015-44730-00-S1

10. Field and Pool, or Exploratory
PURPLE SAGE-WOLFCAMP (GAS)

11. Sec., T., R., M., or Block and Survey
or Area Sec 2 T25S R29E Mer NMP

12. County or Parish
EDDY

13. State
NM

14. Date Spudded
10/02/2018

15. Date T.D. Reached
01/10/2019

16. Date Completed
☐ D & A ☒ Ready to Prod.
03/14/2019

17. Elevations (DF, KB, RT, GL)*
3072 GL

18. Total Depth: MD 20570
TVD 10358

19. Plug Back T.D.: MD 20515
TVD 10358

20. Depth Bridge Plug Set: MD
TVD

21. Type Electric & Other Mechanical Logs Run (Submit copy of each)
GAMMARAY CBL

22. Was well cored? ☒ No ☐ Yes (Submit analysis)
Was DST run? ☒ No ☐ Yes (Submit analysis)
Directional Survey? ☐ No ☒ Yes (Submit analysis)

23. Casing and Liner Record (Report all strings set in well)

| Hole Size | Size/Grade | Wt. (#/ft.) | Top (MD) | Bottom (MD) | Stage Cementer Depth | No. of Sk. & Type of Cement | Slurry Vol. (BBL) | Cement Top* | Amount Pulled |
|-----------|------------|-------------|----------|-------------|----------------------|-----------------------------|-------------------|-------------|---------------|
| 14.750 | 10.750 J55 | 45.5 | 0 | 453 | | 412 | 99 | 0 | |
| 9.875 | 7.625 L80 | 26.4 | 0 | 9759 | 3295 | 1690 | 610 | 0 | |
| 6.750 | 5.500 P110 | 20.0 | 0 | 20561 | | 884 | 204 | 6200 | |
| | | | | | | | | | |
| | | | | | | | | | |
| | | | | | | | | | |

24. Tubing Record

| Size | Depth Set (MD) | Packer Depth (MD) | Size | Depth Set (MD) | Packer Depth (MD) | Size | Depth Set (MD) | Packer Depth (MD) |
|------|----------------|-------------------|------|----------------|-------------------|------|----------------|-------------------|
| | | | | | | | | |

25. Producing Intervals

| Formation | Top | Bottom | Perforated Interval | Size | No. Holes | Perf. Status |
|-------------|-------|--------|---------------------|-------|-----------|--------------|
| A) WOLFCAMP | 10571 | 20421 | 10571 TO 20421 | 0.370 | 1200 | ACTIVE |
| B) | | | | | | |
| C) | | | | | | |
| D) | | | | | | |

26. Perforation Record

27. Acid, Fracture, Treatment, Cement Squeeze, Etc.

| Depth Interval | Amount and Type of Material |
|----------------|---|
| 10571 TO 20421 | 10096548G SLICKWATER + 25032G 7.5% HCL ACID W/ 15007853# SAND |
| | |
| | |
| | |

28. Production - Interval A

| Date First Produced | Test Date | Hours Tested | Test Production | Oil BBL | Gas MCF | Water BBL | Oil Gravity Corr. API | Gas Gravity | Production Method |
|---------------------|-------------------|--------------|-----------------|---------|---------|-----------|-----------------------|-------------|-------------------|
| 03/17/2019 | 03/24/2019 | 24 | → | 3950.0 | 10352.0 | 9225.0 | | | POW |
| Choke Size | Tbg. Press. Flwg. | Csg. Press. | 24 Hr. Rate | Oil BBL | Gas MCF | Water BBL | Gas:Oil Ratio | Well Status | |
| 40/128 | SI | 2320.0 | → | 3950 | 10352 | 9225 | 2621 | POW | |

28a. Production - Interval B

| Date First Produced | Test Date | Hours Tested | Test Production | Oil BBL | Gas MCF | Water BBL | Oil Gravity Corr. API | Gas Gravity | Production Method |
|---------------------|-------------------|--------------|-----------------|---------|---------|-----------|-----------------------|-------------|-------------------|
| | | | → | | | | | | |
| Choke Size | Tbg. Press. Flwg. | Csg. Press. | 24 Hr. Rate | Oil BBL | Gas MCF | Water BBL | Gas:Oil Ratio | Well Status | |
| SI | | | → | | | | | | |

(See Instructions and spaces for additional data on reverse side)

ELECTRONIC SUBMISSION #468616 VERIFIED BY THE BLM WELL INFORMATION SYSTEM

** BLM REVISED ** BLM REVISED ** BLM REVISED ** BLM REVISED ** BLM REVISED **

Reclamation Due: 9/14/19

RECEIVED

JAN 09 2020

OCD AREA

EMNRD-001 AND LOG

ACCEPTED FOR RECORD

DEC 3 2019
Dinah Negrete
BUREAU OF LAND MANAGEMENT
CARLSBAD FIELD OFFICE

28b. Production - Interval C

| Date First Produced | Test Date | Hours Tested | Test Production | Oil BBL | Gas MCF | Water BBL | Oil Gravity Corr. API | Gas Gravity | Production Method |
|---------------------|----------------------|--------------|-----------------|---------|---------|-----------|-----------------------|-------------|-------------------|
| | | | → | | | | | | |
| Choke Size | Tbg. Press. Flwg. SI | Csg. Press. | 24 Hr. Rate | Oil BBL | Gas MCF | Water BBL | Gas:Oil Ratio | Well Status | |
| | | | → | | | | | | |

28c. Production - Interval D

| Date First Produced | Test Date | Hours Tested | Test Production | Oil BBL | Gas MCF | Water BBL | Oil Gravity Corr. API | Gas Gravity | Production Method |
|---------------------|----------------------|--------------|-----------------|---------|---------|-----------|-----------------------|-------------|-------------------|
| | | | → | | | | | | |
| Choke Size | Tbg. Press. Flwg. SI | Csg. Press. | 24 Hr. Rate | Oil BBL | Gas MCF | Water BBL | Gas:Oil Ratio | Well Status | |
| | | | → | | | | | | |

29. Disposition of Gas(Sold, used for fuel, vented, etc.)
SOLD

30. Summary of Porous Zones (Include Aquifers):

Show all important zones of porosity and contents thereof: Cored intervals and all drill-stem tests, including depth interval tested, cushion used, time tool open, flowing and shut-in pressures and recoveries.

31. Formation (Log) Markers

| Formation | Top | Bottom | Descriptions, Contents, etc. | Name | Top Meas. Depth |
|-----------------|-------|--------|------------------------------|---------------|--------------------|
| BELL CANYON | 3285 | 4117 | OIL, GAS, WATER | RUSTLER | 221 |
| CHERRY CANYON | 4118 | 5358 | OIL, GAS, WATER | SALADO | 585 |
| BRUSHY CANYON | 5359 | 6994 | OIL, GAS, WATER | CASTILE | 1782 |
| BONE SPRING | 6995 | 7889 | OIL, GAS, WATER | LAMAR | 3247 |
| BONE SPRING 1ST | 7890 | 8562 | OIL, GAS, WATER | BELL CANYON | 3285 |
| BONE SPRING 2ND | 8563 | 9828 | OIL, GAS, WATER | CHERRY CANYON | 4118 |
| BONE SPRING 3RD | 9829 | 10359 | OIL, GAS, WATER | BRUSHY CANYON | 5359 |
| WOLFCAMP | 10360 | | OIL, GAS, WATER | BONE SPRING | 6995 |

32. Additional remarks (include plugging procedure):
52. FORMATION (LOG) MARKERS CONTD.

1ST BONE SPRING 7890' MD
2ND BONE SPRING 8563' MD
3RD BONE SPRING 9829' MD
WOLFCAMP 10360' MD

Logs were mailed 6/12/19.

33. Circle enclosed attachments:

- | | | | |
|---|--------------------|---------------|-----------------------|
| 1. Electrical/Mechanical Logs (1 full set req'd.) | 2. Geologic Report | 3. DST Report | 4. Directional Survey |
| 5. Sundry Notice for plugging and cement verification | 6. Core Analysis | 7. Other: | |

34. I hereby certify that the foregoing and attached information is complete and correct as determined from all available records (see attached instructions):

Electronic Submission #468616 Verified by the BLM Well Information System.

For OXY USA INCORPORATED, sent to the Carlsbad

Committed to AFMSS for processing by DINAH NEGRETE on 09/27/2019 (19DCN0265SE)

Name (please print) JANA MENDIOLA

Title REGULATORY SPECIALIST

Signature (Electronic Submission)

Date 06/11/2019

Title 18 U.S.C. Section 1001 and Title 43 U.S.C. Section 1212, make it a crime for any person knowingly and willfully to make to any department or agency of the United States any false, fictitious or fraudulent statements or representations as to any matter within its jurisdiction.

**** REVISED ** REVISED ** REVISED ** REVISED ** REVISED ** REVISED ** REVISED ** REVISED ****

Additional data for transaction #468616 that would not fit on the form

32. Additional remarks, continued

Log Header, Directional Survey, As-Drilled Amended C-102 plat & WBD are attached.

District I
1625 N. French Dr., Hobbs, NM 88240
Phone: (575) 393-6161 Fax: (575) 393-0720
District II
811 S. First St., Arcoia, NM 88210
Phone: (575) 748-1283 Fax: (575) 748-9720
District III
1000 Rio Bravo Road, Arcoia, NM 87410
Phone: (505) 334-6178 Fax: (505) 334-6170
District IV
1330 S. St. Francis Dr., Santa Fe, NM 87505
Phone: (505) 476-3460 Fax: (505) 476-3462

State of New Mexico
Energy, Minerals & Natural Resources Department
OIL CONSERVATION DIVISION
1220 South St. Francis Dr.
Santa Fe, NM 87505

Form C-102
Revised August 1, 2011
Submit one copy to appropriate
District Office

☒ AMENDED REPORT
(As-Drilled)

WELL LOCATION AND ACREAGE DEDICATION PLAT

| | | |
|-----------------------------------|--|--|
| API Number 30-015-44730 | Pool Code 98220 | Pool Name Purple Sage Wolfcamp |
| Property Code 320767 | Property Name CORRAL FLY "35-26" FEDERAL COM | Well Number 35H |
| OGRID No. 16696 | Operator Name OXY USA INC. | Elevation 3072.0' |

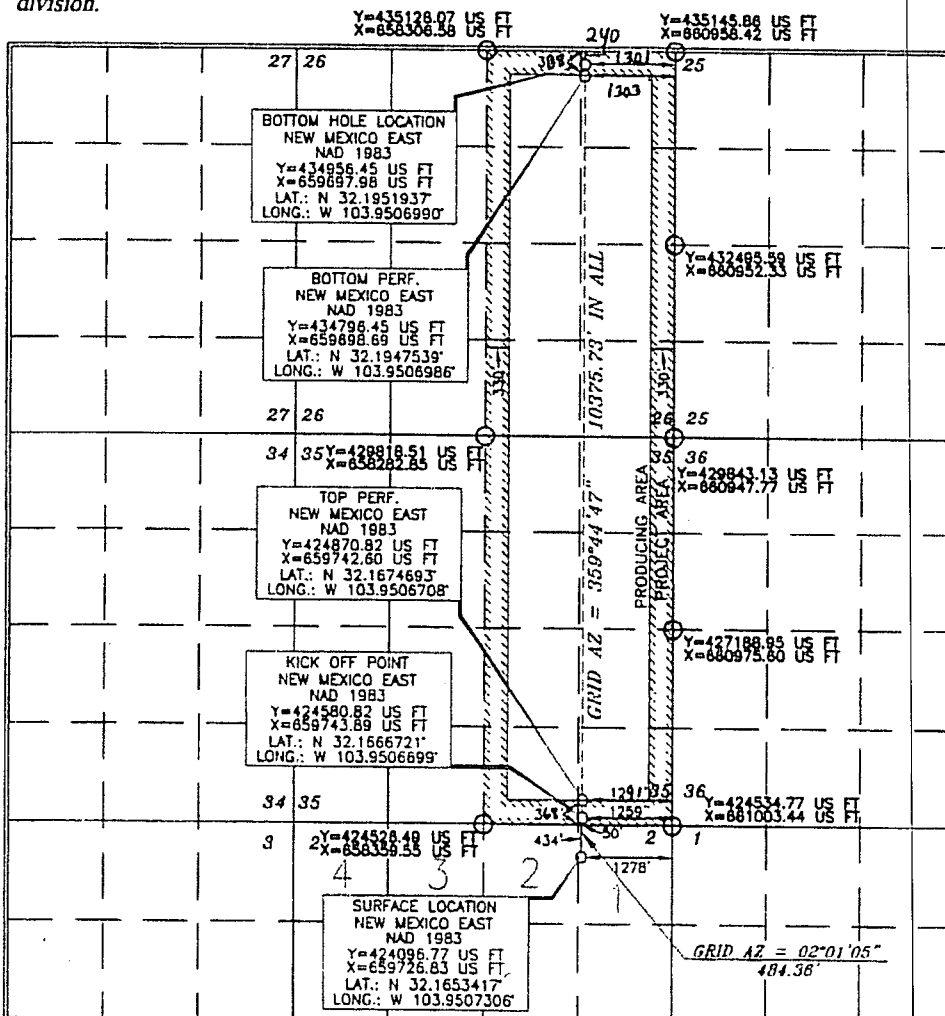
Surface Location

| UL or lot no. | Section | Township | Range | Lot Idn | Feet from the | North/South line | Feet from the | East/West line | County |
|---------------|---------|----------|-------------------|---------|---------------|------------------|---------------|----------------|--------|
| 1 | 2 | 25 SOUTH | 29 EAST, N.M.P.M. | | 434' | NORTH | 1278' | EAST | EDDY |

Bottom Hole Location If Different From Surface

| UL or lot no. | Section | Township | Range | Lot Idn | Feet from the | North/South line | Feet from the | East/West line | County |
|-------------------------------|-----------------------------|--------------------|-------------------|--|---------------|------------------|----------------|----------------|--------|
| A | 26 | 24 SOUTH | 29 EAST, N.M.P.M. | | 180' 270' | NORTH | 1301' 1301' | EAST | EDDY |
| Dedicated Acres 640 | Joint or Infill Y | Consolidation Code | Order No. | LTP- 388 FNL 1303 FEL FTP- 368 FSL 1291 FEL | | | | | |

No allowable will be assigned to this completion until all interests have been consolidated or a non-standard unit has been approved by the division.



OPERATOR CERTIFICATION

I hereby certify that the information contained herein is true and complete to the best of my knowledge and belief, and that this organization either owns a working interest or unleased mineral interest in the land including the proposed bottom hole location or has a right to drill this well at this location pursuant to a contract with an owner of such a mineral or working interest, or to a voluntary pooling agreement or a compulsory pooling order heretofore entered by the division.

Signature: *[Signature]* Date: **3/6/19**
Printed Name: **Jana Mendiola**
E-mail Address: **jana@oxy.com**

SURVEYOR CERTIFICATION

I hereby certify that the well location shown on this plat was plotted from field notes of actual surveys made by me or under my supervision, and that the same is true and correct to the best of my belief.

Date of Survey: **JUNE 22, 2017**
Signature and Seal: *[Signature]*
Professional Surveyor: **15079**

Certificate Number: **15079**