

District I
1625 N. French Dr., Hobbs, NM 88240
Phone: (575) 393-6161 Fax: (575) 393-0720
District II
811 S. First St., Artesia, NM 88210
Phone: (575) 748-1283 Fax: (575) 748-9720
District III
1000 Rio Brazos Road, Aztec, NM 87410
Phone: (505) 334-6178 Fax: (505) 334-6170
District IV
1220 S. St. Francis Dr., Santa Fe, NM 87505
Phone: (505) 476-3460 Fax: (505) 476-3462

RECEIVED
State of New Mexico
Energy, Minerals & Natural Resources Department
OIL CONSERVATION DIVISION
1220 South St. Santa Fe, NM 87505
EMERALD-OCD ARTESIA

Form C-102
Revised August 1, 2011
Submit one copy to appropriate District Office
☐ AMENDED REPORT

WELL LOCATION AND ACREAGE DEDICATION PLAT

¹ API Number 30-015-46657	² Pool Code 97975	³ Well Name Wildcat, Bone Spring
⁴ Property Code 325469	⁵ Property Name POKER LAKE UNIT 17 TWR	
⁷ OGRID No. 260787 3730 15	⁸ Operator Name XTO PERMIAN OPERATING, LLC.	
	⁶ Well Number 907H	⁹ Elevation 3,522'

10 Surface Location

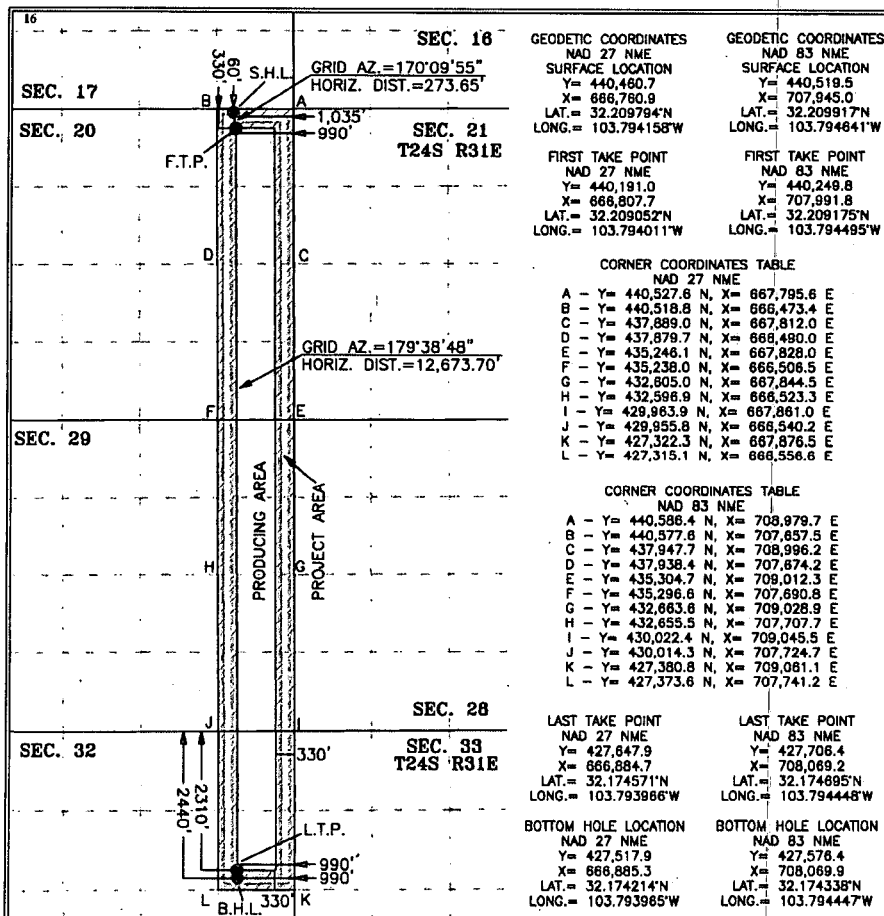
UL or lot no.	Section	Township	Range	Lot Idn	Feet from the	North/South line	Feet from the	East/West line	County
A	20	24 S	31 E		60	NORTH	1,035	EAST	EDDY

11 Bottom Hole Location If Different From Surface

UL or lot no.	Section	Township	Range	Lot Idn	Feet from the	North/South line	Feet from the	East/West line	County
H	32	24 S	31 E		2,440	NORTH	990	EAST	EDDY

¹² Dedicated Acres 400	¹³ Joint or Infill	¹⁴ Consolidation Code	¹⁵ Order No.
--------------------------------------	-------------------------------	----------------------------------	-------------------------

No allowable will be assigned to this completion until all interests have been consolidated or a non-standard unit has been approved by the division.



17 OPERATOR CERTIFICATION

I hereby certify that the information contained herein is true and complete to the best of my knowledge and belief, and that this organization either owns a working interest or unleased mineral interest in the land including the proposed bottom hole location or has a right to drill this well at this location pursuant to a contract with an owner of such a mineral or working interest, or to a voluntary pooling agreement or a compulsory pooling order heretofore entered by the division.

Signature: Kelly Kardos Date: 6/18/18

Printed Name: Kelly Kardos

E-mail Address: kelly_kardos@xtoenergy.com

18 SURVEYOR CERTIFICATION

I hereby certify that the well location shown on this plat was plotted from field notes of actual surveys made by me or under my supervision, and that the same is true and correct to the best of my belief.

Date of Survey: 05-15-2018

Signature and Seal of Professional Surveyor:

MARK DILLON HARP 23786

Certificate Number: 23786

AI/AW: 2018010216

RWP 1-28-2020

RECEIVED

JAN 22 2020

EMNRD-OCD ARTESIAIntent ☒ As Drilled ☐

API #

Operator Name:
XTO PERMIAN OPERATING, LLCProperty Name:
POKER LAKE UNIT 17 TWRWell Number
907H

Kick Off Point (KOP)

UL	Section	Township	Range	Lot	Feet	From N/S	Feet	From E/W	County
A	20	24S	31E		60	NORTH	1035	EAST	EDDY
Latitude					Longitude			NAD	
32.209917					-103.794641			83	

First Take Point (FTP)

UL	Section	Township	Range	Lot	Feet	From N/S	Feet	From E/W	County
A	20	24S	31E		330	NORTH	990	EAST	EDDY
Latitude					Longitude			NAD	
32.209175					-103.794495			83	

Last Take Point (LTP)

UL	Section	Township	Range	Lot	Feet	From N/S	Feet	From E/W	County
H	32	24S	31E		330	SOUTH	990	EAST	EDDY
Latitude					Longitude			NAD	
32.174695					-103.794448			83	

Is this well the defining well for the Horizontal Spacing Unit?

☐ N

Is this well an infill well?

☐ Y

If infill is yes please provide API if available, Operator Name and well number for Defining well for Horizontal Spacing Unit.

API #

Operator Name:
XTO PERMIAN OPERATING, LLCProperty Name:
Poker Lake Unit 17 TWRWell Number
707H

KZ 06/29/2018