

DEC 31 2019

DISTRICT I  
1925 N. FRENCH DR., HOBBS, NM 88240  
Phone: (505) 393-8101 Fax: (505) 393-0720

DISTRICT II  
811 S. FIRST ST., ARTESIA, NM 88210  
Phone: (505) 748-1283 Fax: (505) 748-0720

DISTRICT III  
1000 RIO BRAZOS RD., AZTEC, NM 87410  
Phone: (505) 334-8178 Fax: (505) 334-8170

DISTRICT IV  
1220 S. ST. FRANCIS DR., SANTA FE, NM 87505  
Phone: (505) 476-3460 Fax: (505) 476-3462

State of New Mexico  
Energy, Minerals & Natural Resources Department  
**OIL CONSERVATION DIVISION**  
1220 SOUTH ST. FRANCIS DR.  
Santa Fe, New Mexico 87505

RECEIVED

Form C-102

Revised August 1, 2011

Submit one copy to appropriate

District Office

AMENDED REPORT

WELL LOCATION AND ACREAGE DEDICATION PLAT

API Number <b>30-015-46582</b>	Pool Code <b>98236</b>	Well Name <b>Wildcat Wolfcamp</b>
Property Code <b>326187</b>	Property Name <b>PRECIOUS 30_18 FEDERAL COM</b>	Well Number <b>172H</b>
OGRID No. <b>16696</b>	Operator Name <b>OXY USA INC.</b>	Elevation <b>3349.5'</b>

Surface Location

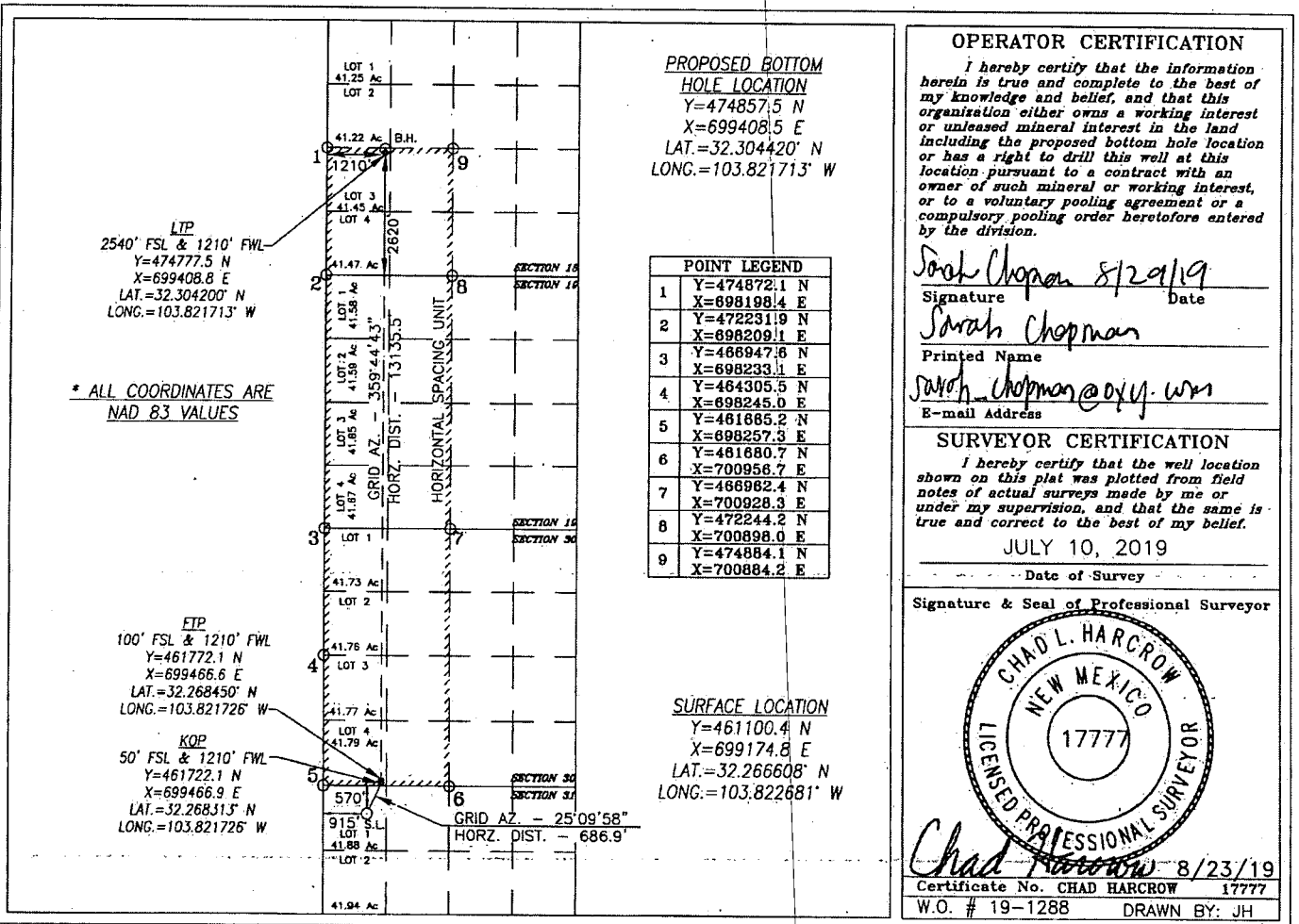
UL or lot No.	Section	Township	Range	Lot Idn	Feet from the	North/South line	Feet from the	East/West line	County
1	31	23-S	31-E		570	NORTH	915	WEST	EDDY

Bottom Hole Location If Different From Surface

UL or lot No.	Section	Township	Range	Lot Idn	Feet from the	North/South line	Feet from the	East/West line	County
3	18	23-S	31-E		2620	SOUTH	1210	WEST	EDDY

Dedicated Acres	Joint or Infill	Consolidation Code	Order No.
800	916.41		

NO ALLOWABLE WILL BE ASSIGNED TO THIS COMPLETION UNTIL ALL INTERESTS HAVE BEEN CONSOLIDATED OR A NON-STANDARD UNIT HAS BEEN APPROVED BY THE DIVISION



Ref 1-13-2020

Intent ☒ As Drilled ☐

API #

Operator Name:	Property Name:	Well Number
Oxy USA Inc.	Praxis 30-18 Federal Com	1724

Kick Off Point (KOP)

UL	Section	Township	Range	Lot	Feet	From N/S	Feet	From E/W	County
	30	235	31E	4	50	South	1210	West	EDDY
Latitude					Longitude			NAD	
32.268313					-103.821726			NAD83	

First Take Point (FTP)

UL	Section	Township	Range	Lot	Feet	From N/S	Feet	From E/W	County
	30	235	31E	4	100	South	1210	West	EDDY
Latitude					Longitude			NAD	
32.268450					-103.821726			NAD83	

Last Take Point (LTP)

UL	Section	Township	Range	Lot	Feet	From N/S	Feet	From E/W	County
	18	235	31E	3	2540	South	1210	West	EDDY
Latitude					Longitude			NAD	
32.304200					-103.821713			NAD83	

Is this well the defining well for the Horizontal Spacing Unit? ☐

Is this well an infill well? ☐

If infill is yes please provide API if available, Operator Name and well number for Defining well for Horizontal Spacing Unit.

API #		
Operator Name:	Property Name:	Well Number

KZ 06/29/2018