

RECEIVED

By RPodany at 11:52 am, Jul 02, 2019

DISTRICT I1625 N. French Dr., Hobbs, N.M. 88240
Phone: (575) 393-8161 Fax: (575) 393-0720**DISTRICT II**811 S. First St., Artesia, N.M. 88210
Phone: (575) 748-1283 Fax: (575) 748-9720**DISTRICT III**1000 Rio Brazos Rd., Aztec, N.M. 87410
Phone: (505) 334-8178 Fax: (505) 334-8170**DISTRICT IV**1220 S. St. Francis Dr., Santa Fe, N.M. 87505
Phone: (505) 478-3480 Fax: (505) 478-3482State of New Mexico
Energy, Minerals & Natural Resources Department

Form C-102

Revised August 1, 2011

Submit one copy to appropriate
District Office**OIL CONSERVATION DIVISION**1220 South St. Francis Dr.
Santa Fe, N.M. 87505☐ AMENDED REPORT**WELL LOCATION AND ACREAGE DEDICATION PLAT**

¹ API Number 30-005- 64337	² Pool Code 52770	³ Pool Name Round Tank; San Andres
⁴ Property Code 325819	⁵ Property Name Linley State	⁶ Well Number 001H
⁷ GRID No. 328565	⁸ Operator Name BAM Permian Operating, LLC	⁹ Elevation 3741

¹⁰ Surface Location

UL or lot no.	Section	Township	Range	Lot Idn	Feet from the	North/South line	Feet from the	East/West line	County
M	32	15 S	29 E		200	South	899	West	Chaves

¹¹ Bottom Hole Location If Different From Surface

UL or lot no.	Section	Township	Range	Lot Idn	Feet from the	North/South line	Feet from the	East/West line	County
D	32	15 S	29 E		30	North	800	West	Chaves

¹² Dedicated Acres 160.00	¹³ Joint or Infill	¹⁴ Consolidation Code	¹⁵ Order No.
--	-------------------------------	----------------------------------	-------------------------

NO ALLOWABLE WILL BE ASSIGNED TO THIS COMPLETION UNTIL ALL INTERESTS HAVE BEEN CONSOLIDATED
OR A NON-STANDARD UNIT HAS BEEN APPROVED BY THE DIVISION

16

SURFACE LOCATION
NAD 83 NMSPC ZONE 3001
Y=715253.1 N
X=626269.8 E
LAT.=32.9659312° N
LONG.=104.0564056° W

SURFACE LOCATION
NAD 27 NMSPC ZONE 3001
Y=715189.0 N
X=585090.9 E
LAT.=32.9658181° N
LONG.=104.0558951° W

BOTTOM HOLE LOCATION
NAD 83 NMSPC ZONE 3001
Y=720249.4 N
X=626122.7 E
LAT.=32.9796649° N
LONG.=104.0568425° W

BOTTOM HOLE LOCATION
NAD 27 NMSPC ZONE 3001
Y=720185.3 N
X=584943.7 E
LAT.=32.9795521° N
LONG.=104.0563319° W

FIRST TAKE POINT
NAD 83 NMSPC ZONE 3001
900' FSL, 899' FWL
SEC. 32, T15S, R29E
Y=715953.1 N
X=626262.8 E
LAT.=32.9678553° N
LONG.=104.0564224° W

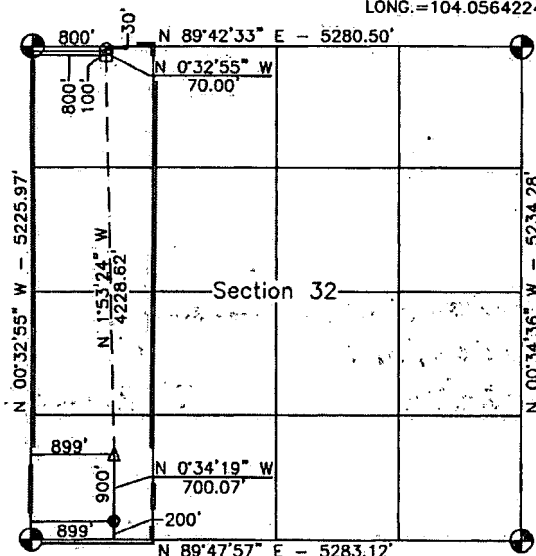
FIRST TAKE POINT
NAD 27 NMSPC ZONE 3001
900' FSL, 899' FWL
SEC. 32, T15S, R29E
Y=715889.1 N
X=585083.9 E
LAT.=32.9677423° N
LONG.=104.0559118° W

LAST TAKE POINT
NAD 83 NMSPC ZONE 3001
100' FNL, 800' FWL
SEC. 32, T15S, R29E
Y=720179.4 N
X=626123.3 E
LAT.=32.9794725° N
LONG.=104.0568409° W

LAST TAKE POINT
NAD 27 NMSPC ZONE 3001
100' FNL, 800' FWL
SEC. 32, T15S, R29E
Y=720115.3 N
X=584944.4 E
LAT.=32.9793597° N
LONG.=104.0563303° W

Legend:

- = Surface Location
- = Bottom Hole Location
- △ = First Take Point (FTP)
- = Last Take Point (LTP)
- ⊕ = Found 1916 USGLO Brass Cap

**17 OPERATOR CERTIFICATION**

I hereby certify that the information contained herein is true and complete to the best of my knowledge and belief, and that this organization either owns a working interest or unleased mineral interest in the land including the proposed bottom hole location or has a right to drill this well at this location pursuant to a contract with an owner of such a mineral or working interest, or to a voluntary pooling agreement or a compulsory pooling order heretofore entered by the division.

Brian Wood

6-28-19

Signature

Date

Brian Wood

Printed Name

brian@permitswest.com

E-mail Address

505 466-8120

18 SURVEYOR CERTIFICATION

I hereby certify that the well location shown on this plat was plotted from field notes of actual surveys made by me or under my supervision, and that the same is true and correct to the best of my belief.

5/02/19

Date of Survey

Signature of Registered Professional Surveyor:



Certificate Number