

RECEIVED

FEB 25 2020

District I
1625 N. French Dr., Hobbs, NM 88240
Phone: (575) 393-6161 Fax: (575) 393-0720
District II
811 S. First St., Artesia, NM 88210
Phone: (575) 748-1283 Fax: (575) 748-9720
District III
1000 Rio Brazos Road, Aztec, NM 87410
Phone: (505) 334-6178 Fax: (505) 334-6170
District IV
1220 S. St. Francis Dr., Santa Fe, NM 87505
Phone: (505) 476-3460 Fax: (505) 476-3462

State of New Mexico
Energy, Minerals & Natural Resources
OIL CONSERVATION DIVISION
1220 South St. Francis Dr.
Santa Fe, NM 87505

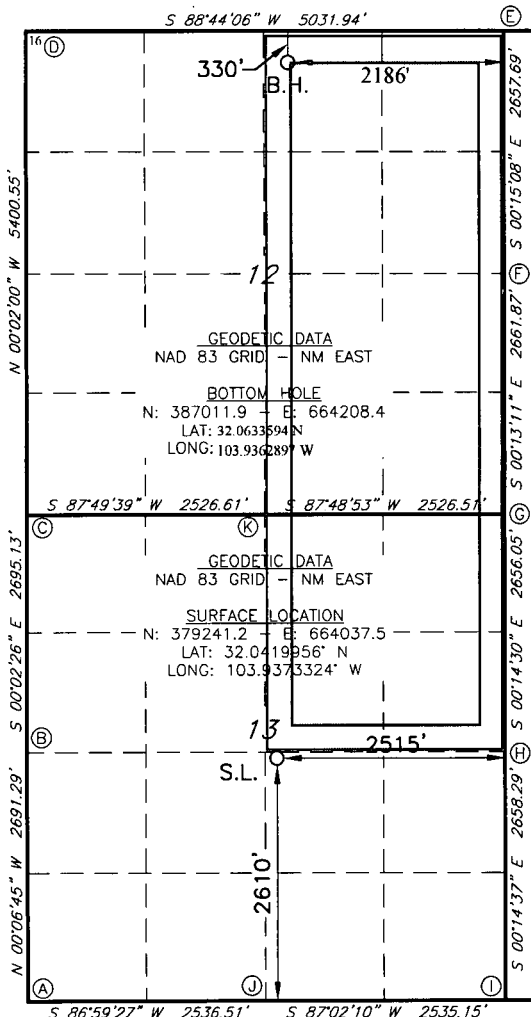
Form C-102
Revised August 1, 2011
Submit one copy to appropriate
District Office

☐ AMENDED REPORT

WELL LOCATION AND ACREAGE DEDICATION PLAT

| | | | | | |
|---|----------------------|---|---------------------|--|----------------------------------|
| 1 API Number 30-015-46790 | | 2 Pool Code 98220 | | 3 Pool Name PURPLE SAGE WOLFCAMP | |
| 4 Property Code 322727 | | 5 Property Name FULLER 13/12 W1GB FED COM | | | 6 Well Number 2H |
| 7 OGRID NO. 14744 | | 8 Operator Name MEWBOURNE OIL COMPANY | | | 9 Elevation 3002' |
| 10 Surface Location | | | | | |
| UL or lot no. J | Section 13 | Township 26S | Range 29E | Lot Idn 2610 | North/South line SOUTH |
| Feet From the 2515 | | East/West line EAST | | County EDDY | |
| 11 Bottom Hole Location If Different From Surface | | | | | |
| UL or lot no. B | Section 12 | Township 26S | Range 29E | Lot Idn 330 | North/South line NORTH |
| Feet from the 330 | | East/West line EAST | | County EDDY | |
| 12 Dedicated Acres 480 | 13 Joint or Infill | 14 Consolidation Code | 15 Order No. | | |

No allowable will be assigned to this completion until all interest have been consolidated or a non-standard unit has been approved by the division.



17 OPERATOR CERTIFICATION

I hereby certify that the information contained herein is true and complete to the best of my knowledge and belief, and that this organization either owns a working interest or unleased mineral interest in the land including the proposed bottom hole location or has a right to drill this well at this location pursuant to a contract with an owner of such a mineral or working interest, or to a voluntary pooling agreement or a compulsory pooling order heretofore entered by the division.

Signature *Bradley C Bishop* Date **4-22-19**
Printed Name **BRADLEY BISHOP**
E-mail Address **BBISHOP@MEWBOURNE.COM**

18 SURVEYOR CERTIFICATION

I hereby certify that the well location shown on this plat was plotted from field notes of actual surveys made by me or under my supervision, and that the same is true and correct to the best of my belief.

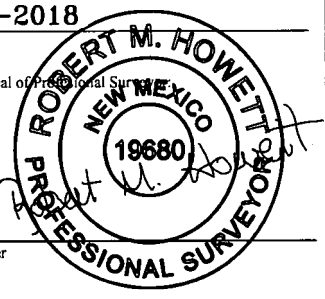
10-11-2018

Date of Survey

Signature and Seal of Professional Surveyor

19680

Certificate Number



RRC-Job No: LS18101144

RW 2-26-2020

RECEIVED

FEB 25 2020

EMNRD-OCDARTESIA

Intent ☒ As Drilled ☐

API #

| | | |
|-------------------------------------|---|-------------------|
| Operator Name: Mewbourne Oil Co. | Property Name: Fuller 13/12 W1GB Fed Com | Well Number 2H |
|-------------------------------------|---|-------------------|

Kick Off Point (KOP)

| | | | | | | | | | |
|------------------------|---------------|-----------------|--------------|-----|---------------------------|---------------|--------------|---------------|----------------|
| UL J | Section 13 | Township 26S | Range 29E | Lot | Feet 2403 | From N/S S | Feet 2186 | From E/W E | County Eddy |
| Latitude 32.0415849 | | | | | Longitude -103.9362805 | | | NAD 83 | |

First Take Point (FTP)

| | | | | | | | | | |
|------------------------|---------------|-----------------|--------------|-----|---------------------------|---------------|--------------|---------------|----------------|
| UL G | Section 13 | Township 26S | Range 29E | Lot | Feet 2326 | From N/S N | Feet 2186 | From E/W E | County Eddy |
| Latitude 32.0431532 | | | | | Longitude -103.9362811 | | | NAD 83 | |

Last Take Point (LTP)

| | | | | | | | | | |
|------------------------|---------------|-----------------|--------------|-----|---------------------------|---------------|--------------|---------------|----------------|
| UL B | Section 12 | Township 26S | Range 29E | Lot | Feet 330 | From N/S N | Feet 2186 | From E/W E | County Eddy |
| Latitude 32.0633594 | | | | | Longitude -103.9362897 | | | NAD 83 | |

Is this well the defining well for the Horizontal Spacing Unit?

☐ N

Is this well an infill well?

☐ Y

If infill is yes please provide API if available, Operator Name and well number for Defining well for Horizontal Spacing Unit.

API #

| | | |
|-------------------------------------|---|-------------------|
| Operator Name: Mewbourne Oil Co. | Property Name: Fuller 13/12 W1GB Fed Com | Well Number 1H |
|-------------------------------------|---|-------------------|

KZ 06/29/2018