

District I
1625 N. French Dr., Hobbs, NM 88240
Phone: (575) 393-6161 Fax: (575) 393-0720
District II
811 S. First St., Artesia, NM 88210
Phone: (575) 748-1283 Fax: (575) 748-9720
District III
1000 Rio Brazos Road, Aztec, NM 87410
Phone: (505) 334-6178 Fax: (505) 334-6170
District IV
1220 S. St. Francis Dr., Santa Fe, NM 87505
Phone: (505) 476-3460 Fax: (505) 476-3462

State of New Mexico
Energy, Minerals & Natural Resources Department
OIL CONSERVATION DIVISION
1220 South St. Francis Dr.
Santa Fe, NM 87505

Form C-102
Revised August 1, 2011

Submit one copy to
appropriate District Office

☐ AMENDED REPORT

WELL LOCATION AND ACREAGE DEDICATION PLAT

| | | |
|--|--|---|
| ¹ API Number 30-015-46821 | ² Pool Code 49622 | ³ Pool Name PARKWAY; BONE SPRING |
| ⁴ Property Code 327304 | ⁵ Property Name URANINITE 32-33 STATE FED COM | ⁶ Well Number 336H |
| ⁷ OGRID No. 6137 | ⁸ Operator Name DEVON ENERGY PRODUCTION COMPANY, L.P. | ⁹ Elevation 3290.4' |

¹⁰ Surface Location

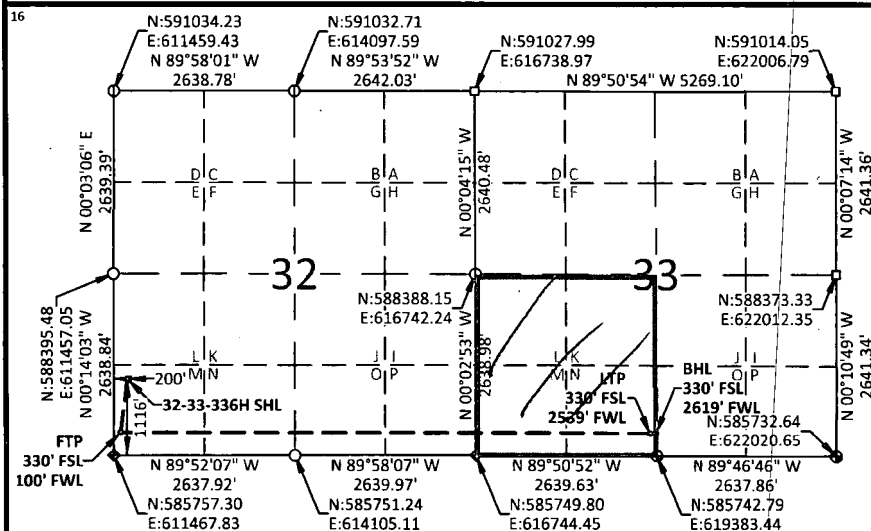
| UL or lot no. | Section | Township | Range | Lot Idn | Feet from the | North/South line | Feet from the | East/West line | County |
|---------------|-----------|-------------|-------------|---------|---------------|------------------|---------------|----------------|-------------|
| M | 32 | 19-S | 29-E | | 1116 | SOUTH | 200 | WEST | EDDY |

¹¹ Bottom Hole Location If Different From Surface

| UL or lot no. | Section | Township | Range | Lot Idn | Feet from the | North/South line | Feet from the | East/West line | County |
|---------------|-----------|-------------|-------------|---------|---------------|------------------|---------------|----------------|-------------|
| N | 33 | 19-S | 29-E | | 330 | SOUTH | 2619 | WEST | EDDY |

| | | | |
|---|-------------------------------|----------------------------------|-------------------------|
| ¹² Dedicated Acres 160 | ¹³ Joint or Infill | ¹⁴ Consolidation Code | ¹⁵ Order No. |
|---|-------------------------------|----------------------------------|-------------------------|

No allowable will be assigned to this completion until all interests have been consolidated or a non-standard unit has been approved by the division.



**URANINITE 32-33
STATE FED COM 336H**
ELEV: 3290.4'
LAT: 32.613156°
LON: -104.104935°
N: 586872.60
E: 611663.23

FIRST TAKE POINT
LAT: 32.610997°
LON: -104.105254°
N: 586087.00
E: 611566.46

LAST TAKE POINT
LAT: 32.610911°
LON: -104.080195°
N: 586072.98
E: 619282.80

BOTTOM HOLE LOCATION
LAT: 32.610910°
LON: -104.079935°
N: 586072.77
E: 619362.78

● USGLO BRASS CAP ◆ IRON PIPE ○ NO.4 REBAR □ STONE

NOTES:

- BEARINGS SHOWN ARE GRID BASED ON THE NEW MEXICO STATE PLANE EAST ZONE COORDINATE SYSTEM (3001), NAD 83 (2011), BASED FROM GPS OBSERVATIONS, OCCUPYING A WHS CONTROL POINT (5/8" REBAR), LOCATED AT NORTH: 589022.345, EAST: 613596.863, ELEVATION: 3316.2, DETERMINED BY AN OPUS SOLUTION ON MARCH 27TH, 2019.
- DISTANCES DEPICTED HEREON ARE REPORTED AS GROUND DISTANCE IN US SURVEY FEET USING A COMBINED SCALE FACTOR OF 1.000220989
- ELEVATIONS ARE OF NAVD 88 COMPUTED USING GEOID 12B.

¹⁷ OPERATOR CERTIFICATION

I hereby certify that the information contained herein is true and complete to the best of my knowledge and belief, and that this organization either owns a working interest or unleased mineral interest in the land including the proposed bottom hole location or has a right to drill this well at this location pursuant to a contract with an owner of such a mineral or working interest, or to a voluntary pooling agreement or a compulsory pooling order heretofore entered by the division.

Erin Workman 07/12/2019
Signature Date

Erin Workman
Printed Name
Erin.workman@dvn.com

E-mail Address

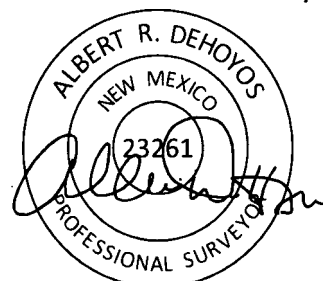
¹⁸ SURVEYOR CERTIFICATION

I hereby certify that the well location shown on this plat was plotted from field notes of actual surveys made by me or under my supervision, and that the same is true and correct to the best of my belief.

05/21/2019

Date of Survey

Signature and Seal of Professional Surveyor:



Certificate No. 23261 Albert Dehoyos

Drawn by: TMW Checked by: ARD Date: 06/12/2019

rw83-11-20

Dual Pool Reporting

2 of 2

RECEIVED

MAR 11 2020

EMNRD-OCDARTESIA

Intent ☒ As Drilled ☐

API #

Operator Name:
DEVON ENERGY PRODUCTION COMPANY, L.P.Property Name:
URANINITE 32-33 STATE FED COMWell Number
336H

Kick Off Point (KOP)

| | | | | | | | | | |
|-----------------------|---------------|-----------------|--------------|-----|--------------------------|-------------------|------------|------------------|----------------|
| UL | Section 32 | Township 19S | Range 29E | Lot | Feet 330 | From N/S SOUTH | Feet 50 | From E/W WEST | County EDDY |
| Latitude 32.610997 | | | | | Longitude -104.105428 | | | NAD 83 | |

First Take Point (FTP)

| | | | | | | | | | |
|------------------------|---------------|------------------|---------------|-----|---------------------------|-------------------|-------------|------------------|----------------|
| UL M | Section 32 | Township 19-S | Range 29-E | Lot | Feet 330 | From N/S SOUTH | Feet 100 | From E/W WEST | County EDDY |
| Latitude 32.610997° | | | | | Longitude -104.105254° | | | NAD 83 | |

Last Take Point (LTP)

| | | | | | | | | | |
|------------------------|---------------|------------------|---------------|-----|---------------------------|-------------------|--------------|------------------|----------------|
| UL N | Section 33 | Township 19-S | Range 29-E | Lot | Feet 330 | From N/S SOUTH | Feet 2539 | From E/W WEST | County EDDY |
| Latitude 32.610911° | | | | | Longitude -104.080195° | | | NAD 83 | |

Is this well the defining well for the Horizontal Spacing Unit?

NO

Is this well an infill well?

YES

If infill is yes provide API if available, Operator name and well number for Defining well for Horizontal Spacing Unit.

API #

Operator Name:
DEVON ENERGY PRODUCTION COMPANY, L.P.Property Name:
URANINITE 32-33 STATE FED COMWell Number
335H

KZ 06/29/2018