

RECEIVED

MAR 11 2020

Form C-102

District I

1625 N. French Dr., Hobbs, NM 88240
Phone: (575) 393-6161 Fax: (575) 393-0720

District II

811 S. First St., Artesia, NM 88210
Phone: (575) 748-1283 Fax: (575) 748-9720

District III

1000 Rio Brazos Road, Aztec, NM 87410
Phone: (505) 334-6178 Fax: (505) 334-6170

District IV

1220 S. St. Francis Dr., Santa Fe, NM 87505
Phone: (505) 476-3460 Fax: (505) 476-3462State of New Mexico
Energy, Minerals & Natural Resources Department

OIL CONSERVATION DIVISION

1220 South St. Francis Dr.
Santa Fe, NM 87505

Revised August 1, 2011

Submit one copy to
appropriate District Office☐ AMENDED REPORT

WELL LOCATION AND ACREAGE DEDICATION PLAT

¹ API Number 30-015-46819	² Pool Code 65010	³ Pool Name WINCHESTER; BONE SPRING
⁴ Property Code 321304	⁵ Property Name URANINITE 32-33 STATE FED COM	
⁷ OGRID No. 6137	⁸ Operator Name DEVON ENERGY PRODUCTION COMPANY, L.P.	⁶ Well Number 334H
		⁹ Elevation 3290.5'

¹⁰ Surface Location

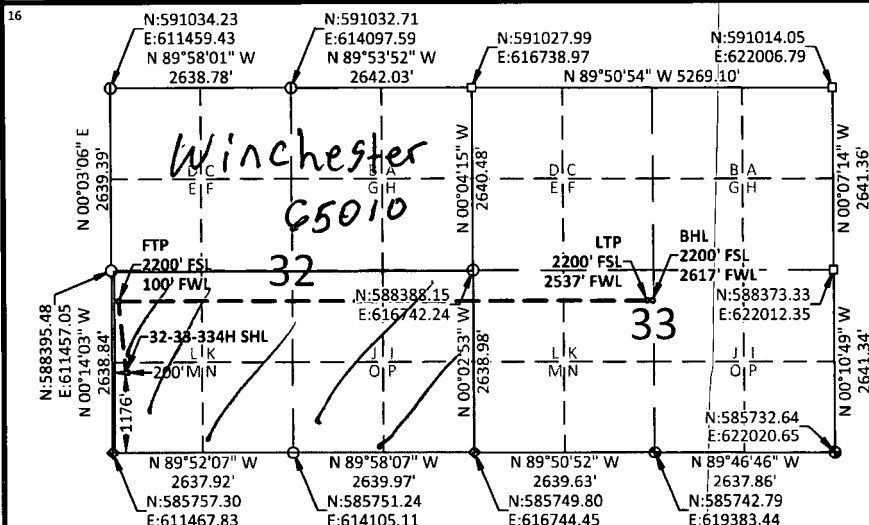
UL or lot no.	Section	Township	Range	Lot Idn	Feet from the	North/South line	Feet from the	East/West line	County
M	32	19-S	29-E		1176	SOUTH	200	WEST	EDDY

¹¹ Bottom Hole Location If Different From Surface

UL or lot no.	Section	Township	Range	Lot Idn	Feet from the	North/South line	Feet from the	East/West line	County
K	33	19-S	29-E		2200	SOUTH	2617	WEST	EDDY

¹² Dedicated Acres	¹³ Joint or Infill	¹⁴ Consolidation Code	¹⁵ Order No.
320			Two plats submitted Per the NMOCD

No allowable will be assigned to this completion until all interests have been consolidated or a non-standard unit has been approved by the division.



URANINITE 32-33
STATE FED COM 334H
ELEV: 3290.5'
LAT: 32.613321°
LON: -104.104935°
N: 586932.60
E: 611662.98

FIRST TAKE POINT
LAT: 32.616137°
LON: -104.105266°
N: 587956.61
E: 611558.82

LAST TAKE POINT
LAT: 32.616050°
LON: -104.080192°
N: 587942.59
E: 619279.06

BOTTOM HOLE LOCATION
LAT: 32.616049°
LON: -104.079933°
N: 587942.37
E: 619359.04

● USGLO BRASS CAP

◆ IRON PIPE

⊙ NO.4 REBAR

□ STONE

NOTES:

1. BEARINGS SHOWN ARE GRID BASED ON THE NEW MEXICO STATE PLANE EAST ZONE COORDINATE SYSTEM (3001), NAD 83 (2011), BASED FROM GPS OBSERVATIONS, OCCUPYING A WHS CONTROL POINT (5/8" REBAR), LOCATED AT NORTH: 589022.345, EAST: 613596.863, ELEVATION: 3316.2, DETERMINED BY AN OPUS SOLUTION ON MARCH 27TH, 2019.
2. DISTANCES DEPICTED HEREON ARE REPORTED AS GROUND DISTANCE IN US SURVEY FEET USING A COMBINED SCALE FACTOR OF 1.000220989
3. ELEVATIONS ARE OF NAVD 88 COMPUTED USING GEIOD 12B.

¹⁷ OPERATOR CERTIFICATION

I hereby certify that the information contained herein is true and complete to the best of my knowledge and belief, and that this organization either owns a working interest or unleased mineral interest in the land including the proposed bottom hole location or has a right to drill this well at this location pursuant to a contract with an owner of such a mineral or working interest, or to a voluntary pooling agreement or a compulsory pooling order heretofore entered by the division.

Erin Workman 07/12/19
Signature Date

Printed Name

Erin.workman@dvn.com

E-mail Address

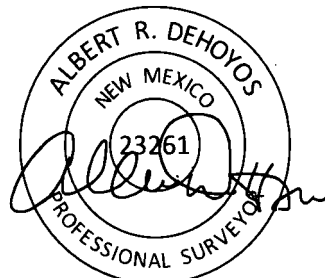
¹⁸ SURVEYOR CERTIFICATION

I hereby certify that the well location shown on this plat was plotted from field notes of actual surveys made by me or under my supervision, and that the same is true and correct to the best of my belief.

05/21/2019

Date of Survey

Signature and Seal of Professional Surveyor:



Certificate No. 23261

Albert Dehoyos

Drawn by: TMW

Checked by: ARD

Date: 06/12/2019

RWP 3-11-20

Dual Pool
Reporting

10 of 2