

District I  
1625 N. French Dr., Hobbs, NM 88240  
Phone: (575) 393-6161 Fax: (575) 393-0720  
District II  
811 S. First St., Artesia, NM 88210  
Phone: (575) 748-1283 Fax: (575) 748-9720  
District III  
1000 Rio Brazos Road, Aztec, NM 87410  
Phone: (505) 334-6178 Fax: (505) 334-6170  
District IV  
1220 S. St. Francis Dr., Santa Fe, NM 87505  
Phone: (505) 476-3460 Fax: (505) 476-3462

State of New Mexico  
Energy, Minerals & Natural Resources Department  
**OIL CONSERVATION DIVISION**  
1220 South St. Francis Dr.  
Santa Fe, NM 87505

Form C-102  
Revised August 1, 2011

Submit one copy to  
appropriate District Office

☐ AMENDED REPORT

**WELL LOCATION AND ACREAGE DEDICATION PLAT**

<sup>1</sup> API Number <b>30-015-46841</b>	<sup>2</sup> Pool Code <b>46922</b>	<sup>3</sup> Pool Name <b>PARKWAY; BONE SPRING</b>
<sup>4</sup> Property Code <b>327304</b>	<sup>5</sup> Property Name <b>URANINITE 32-33 STATE FED COM</b>	<sup>6</sup> Well Number <b>333H</b>
<sup>7</sup> OGRID No. <b>6137</b>	<sup>8</sup> Operator Name <b>DEVON ENERGY PRODUCTION COMPANY, L.P.</b>	<sup>9</sup> Elevation <b>3302.8'</b>

**<sup>10</sup> Surface Location**

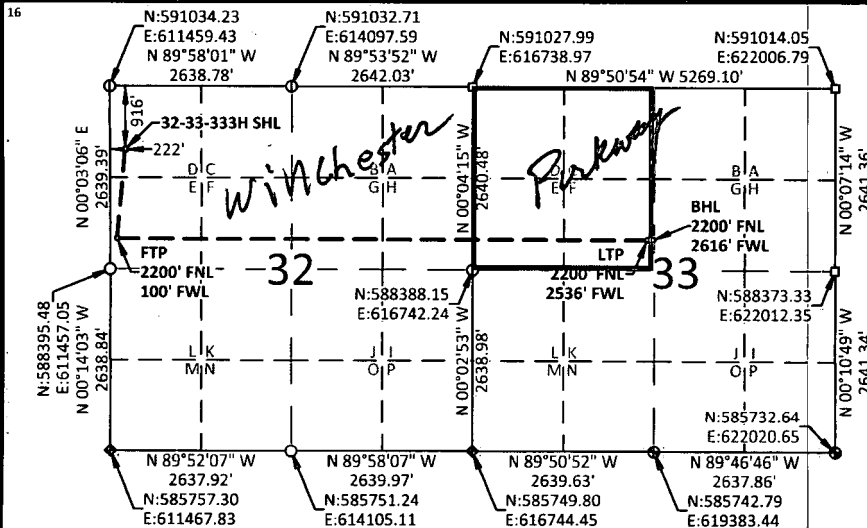
UL or lot no.	Section	Township	Range	Lot Idn	Feet from the	North/South line	Feet from the	East/West line	County
D	32	19-S	29-E		916	NORTH	222	WEST	EDDY

**<sup>11</sup> Bottom Hole Location If Different From Surface**

UL or lot no.	Section	Township	Range	Lot Idn	Feet from the	North/South line	Feet from the	East/West line	County
F	33	19-S	29-E		2200	NORTH	2616	WEST	EDDY

<sup>12</sup> Dedicated Acres <b>160</b>	<sup>13</sup> Joint or Infill	<sup>14</sup> Consolidation Code	<sup>15</sup> Order No. <b>Two plats submitted per NMOCD</b>
---------------------------------------------	-------------------------------	----------------------------------	-----------------------------------------------------------------

No allowable will be assigned to this completion until all interests have been consolidated or a non-standard unit has been approved by the division.



**URANINITE 32-33  
STATE FED COM 333H**  
ELEV: 3302.8'  
LAT: 32.622078°  
LON: -104.104856°  
N: 590118.30  
E: 611680.56

**FIRST TAKE POINT**  
LAT: 32.618550°  
LON: -104.105265°  
N: 588834.66  
E: 611557.42

**LAST TAKE POINT**  
LAT: 32.618467°  
LON: -104.080191°  
N: 588821.75  
E: 619277.30

**BOTTOM HOLE LOCATION**  
LAT: 32.618465°  
LON: -104.079932°  
N: 588821.54  
E: 619357.29

● USGLO BRASS CAP

◆ IRON PIPE

⊙ NO.4 REBAR

□ STONE

**<sup>17</sup> OPERATOR CERTIFICATION**

I hereby certify that the information contained herein is true and complete to the best of my knowledge and belief, and that this organization either owns a working interest or unleased mineral interest in the land including the proposed bottom hole location or has a right to drill this well at this location pursuant to a contract with an owner of such a mineral or working interest, or to a voluntary pooling agreement or a compulsory pooling order heretofore entered by the division.

*Erin Workman* 07/10/19  
Signature Date

Erin Workman  
Printed Name  
Erin.workman@dvn.com  
E-mail Address

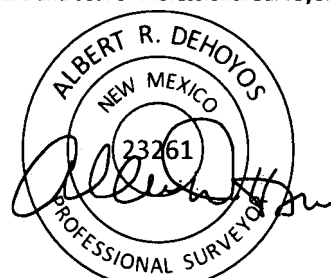
**<sup>18</sup> SURVEYOR CERTIFICATION**

I hereby certify that the well location shown on this plat was plotted from field notes of actual surveys made by me or under my supervision, and that the same is true and correct to the best of my belief.

05/21/2019

Date of Survey

Signature and Seal of Professional Surveyor:



Certificate No. 23261

Albert Dehoyos

Drawn by: TMW

Checked by: ARD

Date: 06/04/2019

**NOTES:**

- BEARINGS SHOWN ARE GRID BASED ON THE NEW MEXICO STATE PLANE EAST ZONE COORDINATE SYSTEM (3001), NAD 83 (2011), BASED FROM GPS OBSERVATIONS, OCCUPYING A WHS CONTROL POINT (5/8" REBAR), LOCATED AT NORTH: 589022.345, EAST: 613596.863, ELEVATION: 3316.2, DETERMINED BY AN OPUS SOLUTION ON MARCH 27TH, 2019.
- DISTANCES DEPICTED HEREON ARE REPORTED AS GROUND DISTANCE IN US SURVEY FEET USING A COMBINED SCALE FACTOR OF 1.000220989
- ELEVATIONS ARE OF NAVD 88 COMPUTED USING GEIOD 128.

1082

WP 3-16-20