

**District I**

1625 N. French Dr., Hobbs, NM 88240  
Phone: (575) 393-6161 Fax: (575) 393-0720

**District II**

811 S. First St., Artesia, NM 88210  
Phone: (575) 748-1283 Fax: (575) 748-9720

**District III**

1000 Rio Brazos Road, Aztec, NM 87410  
Phone: (505) 334-6178 Fax: (505) 334-6170

**District IV**

1220 S. St. Francis Dr., Santa Fe, NM 87505  
Phone: (505) 476-3460 Fax: (505) 476-3462

State of New Mexico  
Energy, Minerals & Natural Resources Department

**OIL CONSERVATION DIVISION**

1220 South St. Francis Dr.

Santa Fe, NM 87505

Form C-102

Revised August 1, 2011

Submit one copy to  
appropriate District Office

☐ AMENDED REPORT

**WELL LOCATION AND ACREAGE DEDICATION PLAT**

|  |  |  |
|--|--|--|
| <sup>1</sup> API Number<br><b>30-015-46840</b> | <sup>2</sup> Pool Code<br><b>65010</b>                                     | <sup>3</sup> Pool Name<br><b>WINCHESTER; BONE SPRING</b> |
| <sup>4</sup> Property Code<br><b>3 27304</b>   | <sup>5</sup> Property Name<br><b>URANINITE 32-33 STATE FED COM</b>         | <sup>6</sup> Well Number<br><b>332H</b>                  |
| <sup>7</sup> OGRID No.<br><b>6137</b>          | <sup>8</sup> Operator Name<br><b>DEVON ENERGY PRODUCTION COMPANY, L.P.</b> | <sup>9</sup> Elevation<br><b>3302.9'</b>                 |

**<sup>10</sup> Surface Location**

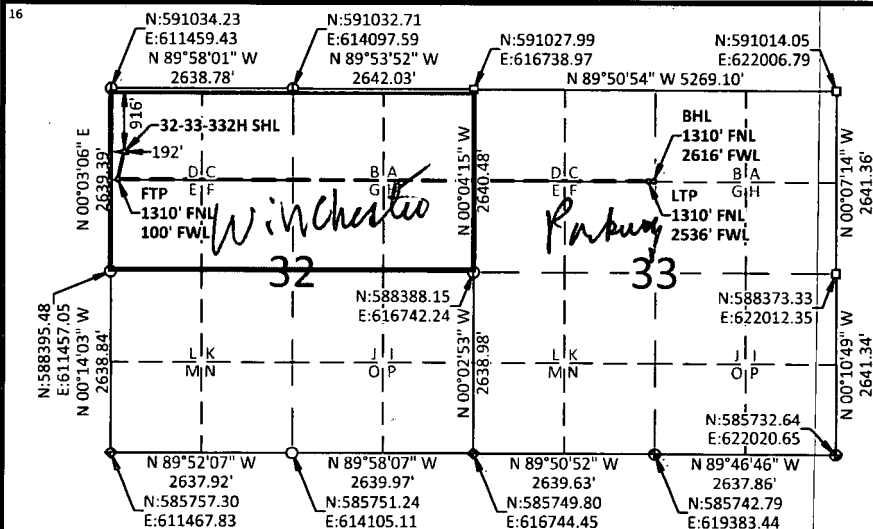
| UL or lot no. | Section | Township | Range | Lot Idn | Feet from the | North/South line | Feet from the | East/West line | County |
|---------------|---------|----------|-------|---------|---------------|------------------|---------------|----------------|--------|
| D             | 32      | 19-S     | 29-E  |         | 916           | NORTH            | 192           | WEST           | EDDY   |

**<sup>11</sup> Bottom Hole Location If Different From Surface**

| UL or lot no. | Section | Township | Range | Lot Idn | Feet from the | North/South line | Feet from the | East/West line | County |
|---------------|---------|----------|-------|---------|---------------|------------------|---------------|----------------|--------|
| C             | 33      | 19-S     | 29-E  |         | 1310          | NORTH            | 2616          | WEST           | EDDY   |

|   |  |                                  |   |
|---|--|----------------------------------|---|
| <sup>12</sup> Dedicated Acres<br><b>320</b> | <sup>13</sup> Joint or Infill<br><b>NO</b> | <sup>14</sup> Consolidation Code | <sup>15</sup> Order No.<br><b>Two plats submitted per NMOCD</b> |
|---|--|----------------------------------|---|

No allowable will be assigned to this completion until all interests have been consolidated or a non-standard unit has been approved by the division.



**URANINITE 32-33  
STATE FED COM 332H**  
ELEV: 3302.9'  
LAT: 32.622078°  
LON: -104.104953°  
N: 590118.32  
E: 611650.56

**FIRST TAKE POINT**  
LAT: 32.620996°  
LON: -104.105256°  
N: 589724.47  
E: 611558.23

**LAST TAKE POINT**  
LAT: 32.620912°  
LON: -104.080190°  
N: 589711.56  
E: 619275.52

**BOTTOM HOLE LOCATION**  
LAT: 32.620911°  
LON: -104.079930°  
N: 589711.35  
E: 619355.51

● USGLO BRASS CAP

◆ IRON PIPE

⊙ NO.4 REBAR

◻ STONE

Two plats submitted per NMOCD

**NOTES:**

- BEARINGS SHOWN ARE GRID BASED ON THE NEW MEXICO STATE PLANE EAST ZONE COORDINATE SYSTEM (3001), NAD 83 (2011), BASED FROM GPS OBSERVATIONS, OCCUPYING A WHS CONTROL POINT (5/8" REBAR), LOCATED AT NORTH: 589022.345, EAST: 613596.863, ELEVATION: 3316.2, DETERMINED BY AN OPUS SOLUTION ON MARCH 27TH, 2019.
- DISTANCES DEPICTED HEREON ARE REPORTED AS GROUND DISTANCE IN US SURVEY FEET USING A COMBINED SCALE FACTOR OF 1.000220989
- ELEVATIONS ARE OF NAVD 88 COMPUTED USING GEIOD 12B.

**<sup>17</sup> OPERATOR CERTIFICATION**

I hereby certify that the information contained herein is true and complete to the best of my knowledge and belief, and that this organization either owns a working interest or unleased mineral interest in the land including the proposed bottom hole location or has a right to drill this well at this location pursuant to a contract with an owner of such a mineral or working interest, or to a voluntary pooling agreement or a compulsory pooling order heretofore entered by the division.

*Erin Workman* 07/01/2019  
Signature Date

**Erin Workman**  
Printed Name

**Erin.workman@dvn.com**  
E-mail Address

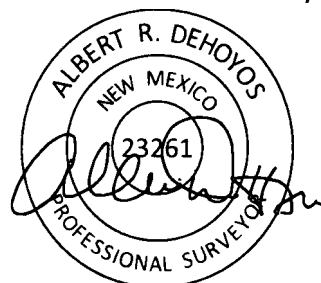
**<sup>18</sup> SURVEYOR CERTIFICATION**

I hereby certify that the well location shown on this plat was plotted from field notes of actual surveys made by me or under my supervision, and that the same is true and correct to the best of my belief.

05/21/2019

Date of Survey

Signature and Seal of Professional Surveyor:



Certificate No. 23261

Albert Dehoyos

Drawn by: TMW

Checked by: ARD

Date: 06/12/2019

2 of 2

RECEIVED

MAR 11 2019

## EMNRD-OCD ARTESIA

Intent ☒As Drilled ☐

API #

Operator Name:  
DEVON ENERGY PRODUCTION COMPANY, L.P.Property Name:  
URANINITE 32-33 STATE FED COMWell Number  
332H

## Kick Off Point (KOP)

| UL                    | Section | Township | Range | Lot | Feet                     | From N/S | Feet | From E/W | County    |
|-----------------------|---------|----------|-------|-----|--------------------------|----------|------|----------|-----------|
| D                     | 32      | 19S      | 29E   |     | 1310                     | NORTH    | 50   | WEST     | EDDY      |
| Latitude<br>32.620996 |         |          |       |     | Longitude<br>-104.105256 |          |      |          | NAD<br>83 |

## First Take Point (FTP)

| UL                     | Section | Township | Range | Lot | Feet                      | From N/S | Feet | From E/W | County    |
|------------------------|---------|----------|-------|-----|---------------------------|----------|------|----------|-----------|
| D                      | 32      | 19-S     | 29-E  |     | 1310                      | NORTH    | 100  | WEST     | EDDY      |
| Latitude<br>32.620996° |         |          |       |     | Longitude<br>-104.105256° |          |      |          | NAD<br>83 |

## Last Take Point (LTP)

| UL                     | Section | Township | Range | Lot | Feet                      | From N/S | Feet | From E/W | County    |
|------------------------|---------|----------|-------|-----|---------------------------|----------|------|----------|-----------|
| C                      | 33      | 19-S     | 29-E  |     | 1310                      | NORTH    | 2616 | WEST     | EDDY      |
| Latitude<br>32.620911° |         |          |       |     | Longitude<br>-104.079930° |          |      |          | NAD<br>83 |

Is this well the defining well for the Horizontal Spacing Unit?

☒ YES

Is this well an infill well?

☐ NO

If infill is yes provide API if available, Operator name and well number for Defining well for Horizontal Spacing Unit.

API #

Operator Name:

Property Name:

Well Number

KZ 06/29/2018