

RECEIVED

MAR 04 2020

FORM C-102

Revised August 1, 2011

District I  
1625 N. French Dr., Hobbs, NM 88240  
Phone: (575) 393-6161 Fax: (575) 393-0720

District II  
811 S. First St., Artesia, NM 88210  
Phone: (575) 748-1283 Fax: (575) 748-9720

District III  
1000 Rio Brazos Road, Aztec, NM 87410  
Phone: (505) 334-6178 Fax: (505) 334-6170

District IV  
1220 S. St. Francis Dr., Santa Fe, NM 87505  
Phone: (505) 476-3460 Fax: (505) 476-3462

State of New Mexico  
Energy, Minerals & Natural Resources  
Department  
OIL CONSERVATION DIVISION  
1220 South St. Francis Dr.  
Santa Fe, NM 87505

EMNRD-OCDARTESIA

to appropriate  
District Office

☐ AMENDED REPORT

## WELL LOCATION AND ACREAGE DEDICATION PLAT

<sup>1</sup> API Number <b>30-015-46836</b>		<sup>2</sup> Pool Code <b>96411</b>	<sup>3</sup> Pool Name <b>Big Sinks Delaware, Southeast</b>
<sup>4</sup> Property Code <b>326329</b>	<sup>5</sup> Property Name <b>BOROS FEDERAL</b>		<sup>6</sup> Well Number <b>023H</b>
<sup>7</sup> GRID No. <b>228937</b>	<sup>8</sup> Operator Name <b>MATADOR PRODUCTION COMPANY</b>		<sup>9</sup> Elevation <b>3225'</b>

<sup>10</sup>Surface Location

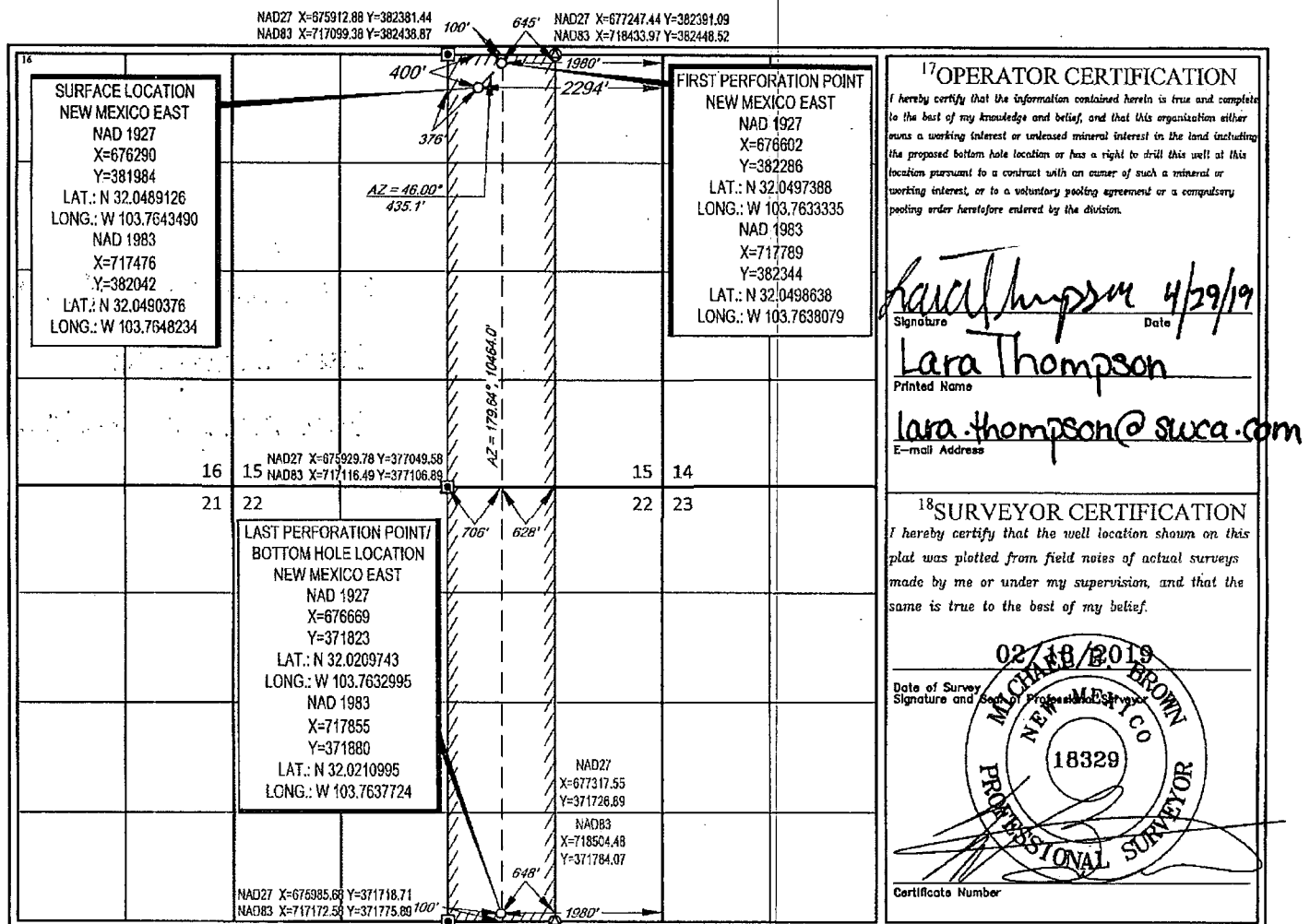
UL or lot no.	Section	Township	Range	Lot Idn	Feet from the	North/South line	Feet from the	East/West line	County
<b>B</b>	<b>15</b>	<b>26-S</b>	<b>31-E</b>	<b>-</b>	<b>400'</b>	<b>NORTH</b>	<b>2294'</b>	<b>EAST</b>	<b>EDDY</b>

<sup>11</sup>Bottom Hole Location If Different From Surface

UL or lot no.	Section	Township	Range	Lot Idn	Feet from the	North/South line	Feet from the	East/West line	County
<b>0</b>	<b>22</b>	<b>26-S</b>	<b>31-E</b>	<b>-</b>	<b>100'</b>	<b>SOUTH</b>	<b>1980'</b>	<b>EAST</b>	<b>EDDY</b>

<sup>12</sup> Dedicated Acres <b>320</b>	<sup>13</sup> Joint or Infill	<sup>14</sup> Consolidation Code	<sup>15</sup> Order No.
---	-------------------------------	----------------------------------	-------------------------

No allowable will be assigned to this completion until all interests have been consolidated or a non-standard unit has been approved by the division.



S:\SURVEY\MATADOR\_RESOURCES\BOROS\_15822-26S-31E\FINAL\_PRODUCTS\SILO\_BOROS\_FEDERAL\_023H\_REV4.DWG 3/4/2019 9:20:51 AM jrichardson

Rev 3-13-20