

RECEIVED

MAR 04 2020

FORM C-102

District I
1625 N. French Dr., Hobbs, NM 88240
Phone: (575) 393-6161 Fax: (575) 393-0720

District II
811 S. First St., Artesia, NM 88210
Phone: (575) 748-1283 Fax: (575) 748-9720

District III
1000 Rio Brazos Road, Aztec, NM 87410
Phone: (505) 334-6178 Fax: (505) 334-6170

District IV
1220 S. St. Francis Dr., Santa Fe, NM 87505
Phone: (505) 476-3460 Fax: (505) 476-3462

State of New Mexico
Energy, Minerals & Natural Resources
Department
OIL CONSERVATION DIVISION
1220 South St. Francis Dr.
Santa Fe, NM 87505

EMNRD-OCDA ARTESIA

Revised August 1, 2011

Submit and copy to appropriate

District Office

☐ AMENDED REPORT

WELL LOCATION AND ACREAGE DEDICATION PLAT

¹ API Number 30-015-46837	² Pool Code 96411	³ Pool Name Big Sinks Delaware, Southeast
⁴ Property Code 326329	⁵ Property Name BOROS FEDERAL	⁶ Well Number 024H
⁷ GRID No. 228937	⁸ Operator Name MATADOR PRODUCTION COMPANY	⁹ Elevation 3218'

¹⁰Surface Location

UL or lot no.	Section	Township	Range	Lot Idn	Feet from the	North/South line	Feet from the	East/West line	County
A	15	26-S	31-E	-	400'	NORTH	711'	EAST	EDDY

¹¹Bottom Hole Location If Different From Surface

UL or lot no.	Section	Township	Range	Lot Idn	Feet from the	North/South line	Feet from the	East/West line	County
P	22	26-S	31-E	-	100'	SOUTH	660'	EAST	EDDY

¹² Dedicated Acres 320	¹³ Joint or Infill	¹⁴ Consolidation Code	¹⁵ Order No.
---	-------------------------------	----------------------------------	-------------------------

No allowable will be assigned to this completion until all interests have been consolidated or a non-standard unit has been approved by the division.

<p>FIRST PERFORATION POINT NEW MEXICO EAST NAD 1927 X=677923 Y=382296 LAT.: N 32.0497459 LONG.: W 103.7590734 NAD 1983 X=719109 Y=382353 LAT.: N 32.0498709 LONG.: W 103.7595476</p>		<p>SURFACE LOCATION NEW MEXICO EAST NAD 1927 X=677873 Y=381996 LAT.: N 32.0489210 LONG.: W 103.7592402 NAD 1983 X=719059 Y=382053 LAT.: N 32.0490460 LONG.: W 103.7597144</p>		<p>¹⁷OPERATOR CERTIFICATION I hereby certify that the information contained herein is true and complete to the best of my knowledge and belief, and that this organization either owns a working interest or leased mineral interest in the land including the proposed bottom hole location or has a right to drill this well of this location pursuant to a contract with an owner of such a mineral or working interest, or to a voluntary pooling agreement or a compulsory pooling order heretofore entered by the division.</p> <p><i>Lara Thompson</i> 5/9/19 Signature Date</p> <p>Lara Thompson Printed Name</p> <p>lara.thompson@surca.com E-mail Address</p>	
<p>LAST PERFORATION POINT/ BOTTOM HOLE LOCATION NEW MEXICO EAST NAD 1927 X=677988 Y=371831 LAT.: N 32.0208773 LONG.: W 103.7590406 NAD 1983 X=719175 Y=371888 LAT.: N 32.0211026 LONG.: W 103.7595133</p>		<p>¹⁸SURVEYOR CERTIFICATION I hereby certify that the well location shown on this plat was plotted from field notes of actual surveys made by me or under my supervision, and that the same is true to the best of my belief.</p> <p>02/18/2019 Date of Survey Signature and Seal of Professional Surveyor</p> <p>MCCHESNEY BROWN NEW MEXICO 18329 PROFESSIONAL SURVEYOR</p> <p>Certificate Number</p>			

RUP 3-13-20

District I
1625 N. French Dr., Hobbs, NM 88240
Phone: (505) 393-6161 Fax: (505) 393-0720
District II
811 S. First St., Artesia, NM 88210
Phone: (505) 748-1283 Fax: (505) 748-9720
District III
1000 Rio Brazos Road, Aztec, NM 87410
Phone: (505) 334-6178 Fax: (505) 334-6170
District IV
1220 S. St. Francis Dr., Santa Fe, NM 87505
Phone: (505) 476-3460 Fax: (505) 476-3462

State of New Mexico
Energy, Minerals & Natural Resources
Department
OIL CONSERVATION DIVISION
1220 South St. Francis Dr.
Santa Fe, NM 87505

RECEIVED

MAR 04 2020

FORM C-102

Revised August 1, 2011

Submit one copy to appropriate

District Office

EMNRD-OCD ARTESIA

☐ AMENDED REPORT

WELL LOCATION AND ACREAGE DEDICATION PLAT

¹ API Number	² Pool Code 96411	³ Pool Name Big Sinks Delaware, Southeast
⁴ Property Code	⁵ Property Name BOROS FEDERAL	⁶ Well Number 024H
⁷ OGRID No. 228937	⁸ Operator Name MATADOR PRODUCTION COMPANY	⁹ Elevation 3218'

¹⁰Surface Location

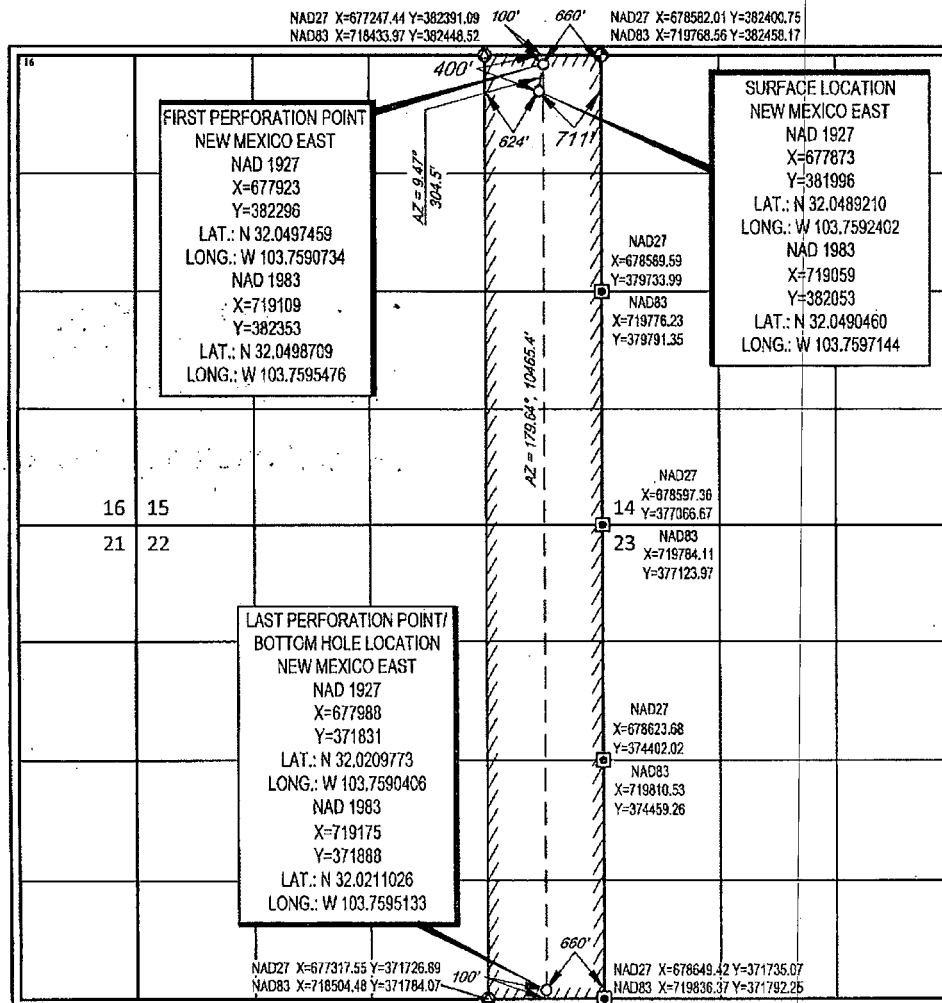
UL or lot no.	Section	Township	Range	Lot Idn	Feet from the	North/South line	Feet from the	East/West line	County
A	15	26-S	31-E	-	400'	NORTH	711'	EAST	EDDY

¹¹Bottom Hole Location If Different From Surface

UL or lot no.	Section	Township	Range	Lot Idn	Feet from the	North/South line	Feet from the	East/West line	County
P	22	26-S	31-E	-	100'	SOUTH	660'	EAST	EDDY

¹² Dedicated Acres 320	¹³ Joint or Infill	¹⁴ Consolidation Code	¹⁵ Order No.
--------------------------------------	-------------------------------	----------------------------------	-------------------------

No allowable will be assigned to this completion until all interests have been consolidated or a non-standard unit has been approved by the division.



¹⁷OPERATOR CERTIFICATION

I hereby certify that the information contained herein is true and complete to the best of my knowledge and belief, and that this organization either owns a working interest or unleased mineral interest in the land including the proposed bottom hole location or has a right to drill this well at this location pursuant to a contract with an owner of such a mineral or working interest, or to a voluntary pooling agreement or a compulsory pooling order heretofore entered by the division.

Lara Thompson 5/9/19
Signature Date
Lara Thompson
Printed Name
lara.thompson@swca.com
E-mail Address

¹⁸SURVEYOR CERTIFICATION

I hereby certify that the well location shown on this plat was plotted from field notes of actual surveys made by me or under my supervision, and that the same is true to the best of my belief.

02/18/2019
Date of Survey
Signature and Seal of Professional Surveyor
MICHAEL BROWN
NEW MEXICO
18329
PROFESSIONAL SURVEYOR
Certificate Number