

DISTRICT I
1625 N. French Dr., Hobbs, NM 88240

DISTRICT II
811 South First, Artesia, NM 88210

DISTRICT III
1000 Rio Brazos Rd., Aztec, NM 87410

DISTRICT IV
2040 South Pacheco, Santa Fe, NM 87505

State of New Mexico
Energy, Minerals and Natural Resources Department

Form C-102
Revised March 17, 1999

Submit to Appropriate District Office
State Lease - 4 Copies
Fee Lease - 3 Copies

OIL CONSERVATION DIVISION

2040 South Pacheco
Santa Fe, New Mexico 87504-2088

AMENDED REPORT

WELL LOCATION AND ACREAGE DEDICATION PLAT

API Number		Pool Code	Pool Name
		47545	NASH DRAW (DELAWARE)
Property Code	Property Name		Well Number
001796	POKER LAKE UNIT		216
OGRD No.	Operator Name		Elevation
001801	BASS ENTERPRISES PRODUCTION COMPANY		3169'

Surface Location

UL or lot No.	Section	Township	Range	Lot Idn	Feet from the	North/South line	Feet from the	East/West line	County
G	19	24 S	30 E		1980	NORTH	1780	EAST	EDDY

Bottom Hole Location If Different From Surface

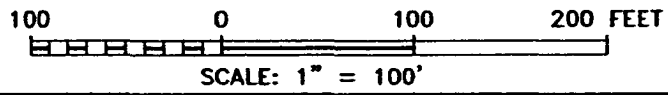
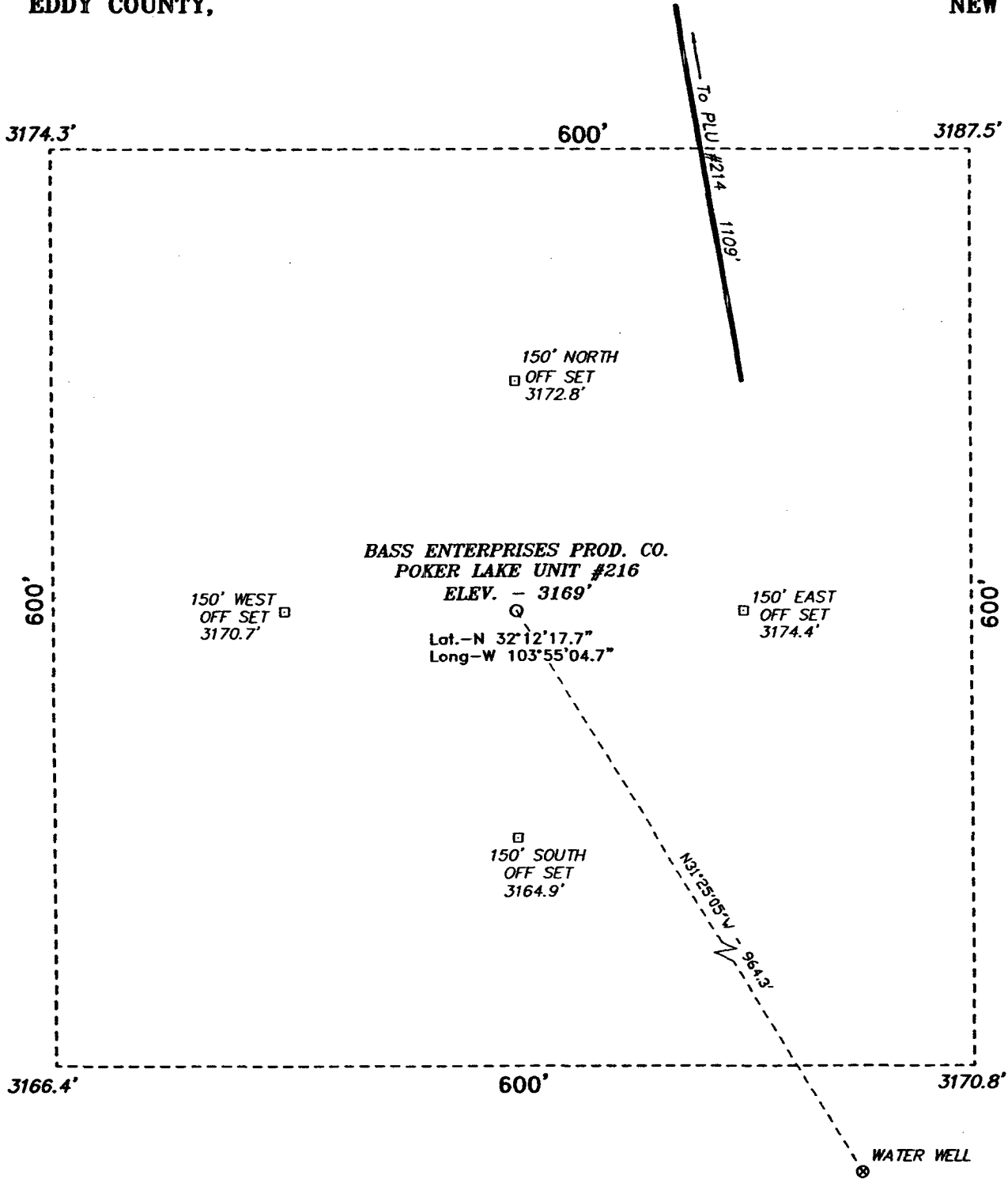
UL or lot No.	Section	Township	Range	Lot Idn	Feet from the	North/South line	Feet from the	East/West line	County

Dedicated Acres	Joint or Infill	Consolidation Code	Order No.
40	N		

NO ALLOWABLE WILL BE ASSIGNED TO THIS COMPLETION UNTIL ALL INTERESTS HAVE BEEN CONSOLIDATED OR A NON-STANDARD UNIT HAS BEEN APPROVED BY THE DIVISION

LOT 1 - 40.77 AC.	40.66 AC.	40.65 AC.	40.65 AC.	<p>OPERATOR CERTIFICATION</p> <p>I hereby certify the the information contained herein is true and complete to the best of my knowledge and belief.</p> <p><i>William R. Dannels</i> Signature</p> <p>W.R. DANNELS Printed Name</p> <p>DIVISION DRILLING SUPT. Title</p> <p>9/27/2004 Date</p> <hr/> <p>SURVEYOR CERTIFICATION</p> <p>I hereby certify that the well location shown on this plat was plotted from field notes of actual surveys made by me or under my supervision and that the same is true and correct to the best of my knowledge.</p> <p>APR 15 2004 Date Surveyed</p> <p><i>[Signature]</i> Signature & Seal of Professional Surveyor 7977</p> <p>W.O. No. 4143</p> <p>Certificate No. Gary L. Jones 7977</p> <p>BASIN SURVEYS</p>
LOT 2 - 40.87 AC.	40.69 AC.	40.68 AC.	40.66 AC.	
LOT 3 - 40.94 AC.	40.69 AC.	40.68 AC.	40.67 AC.	
LOT 4 - 41.06 AC.	40.73 AC.	40.70 AC.	40.70 AC.	

SECTION 19, TOWNSHIP 24 SOUTH, RANGE 30 EAST, N.M.P.M.,
 EDDY COUNTY, NEW MEXICO.

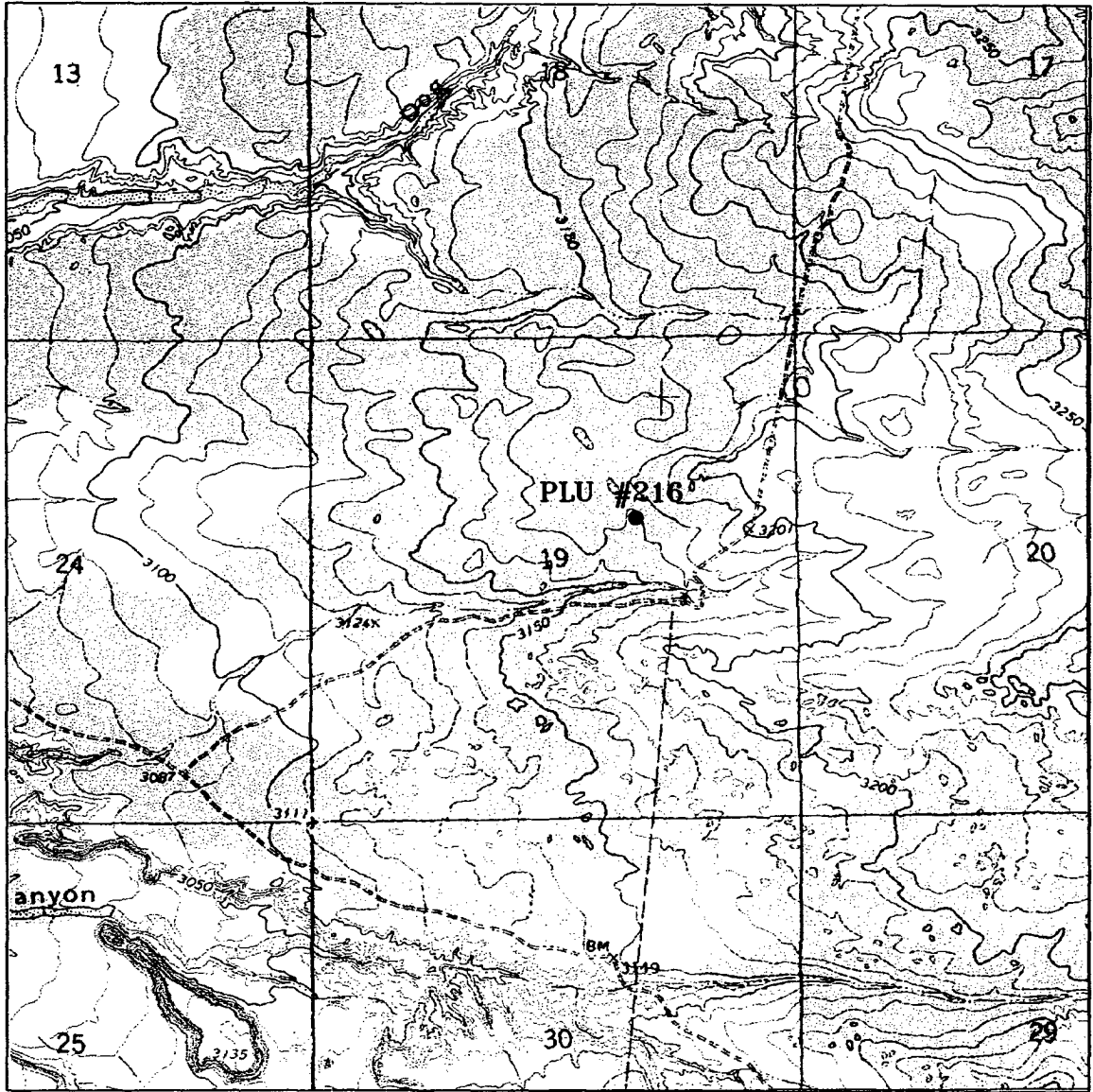


DIRECTIONS TO LOCATION:

FROM THE JUNCTION OF CO. RD. 746A AND CO. RD. 748, GO EASTERLY ON CO. RD. 746A FOR APPROX. 1.0 MILE AND NORTHERLY FOR APPROX. 0.75 MILE TO PROPOSED LEASE ROAD TO THE PLU #213 AND THE PLU #216.

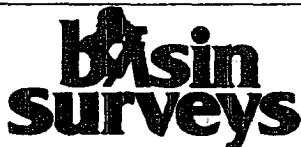
BASS ENTERPRISES PRODUCTION CO.	
REF: POKER LAKE UNIT No. 216 / Well Pad Topo	
THE POKER LAKE UNIT No. 216 LOCATED 1980' FROM THE NORTH LINE AND 1780' FROM THE EAST LINE OF SECTION 19, TOWNSHIP 24 SOUTH, RANGE 30 EAST, N.M.P.M., EDDY COUNTY, NEW MEXICO.	
W.O. Number: 4143	Drawn By: K. GOAD
Date: 04-23-2004	Disk: KJG CD#7 - 4143A.DWG
Survey Date: 04-15-2004	Sheet 1 of 1 Sheets

BASIN SURVEYS P.O. BOX 1786-HOBBS, NEW MEXICO



POKER LAKE UNIT #216

Located at 1980' FNL and 1780' FEL
 Section 19, Township 24 South, Range 30 East,
 N.M.P.M., Eddy County, New Mexico.



focused on excellence
 in the oilfield

P.O. Box 1786
 1120 N. West County Rd.
 Hobbs, New Mexico 88241
 (505) 393-7316 - Office
 (505) 392-3074 - Fax
 basinsurveys.com

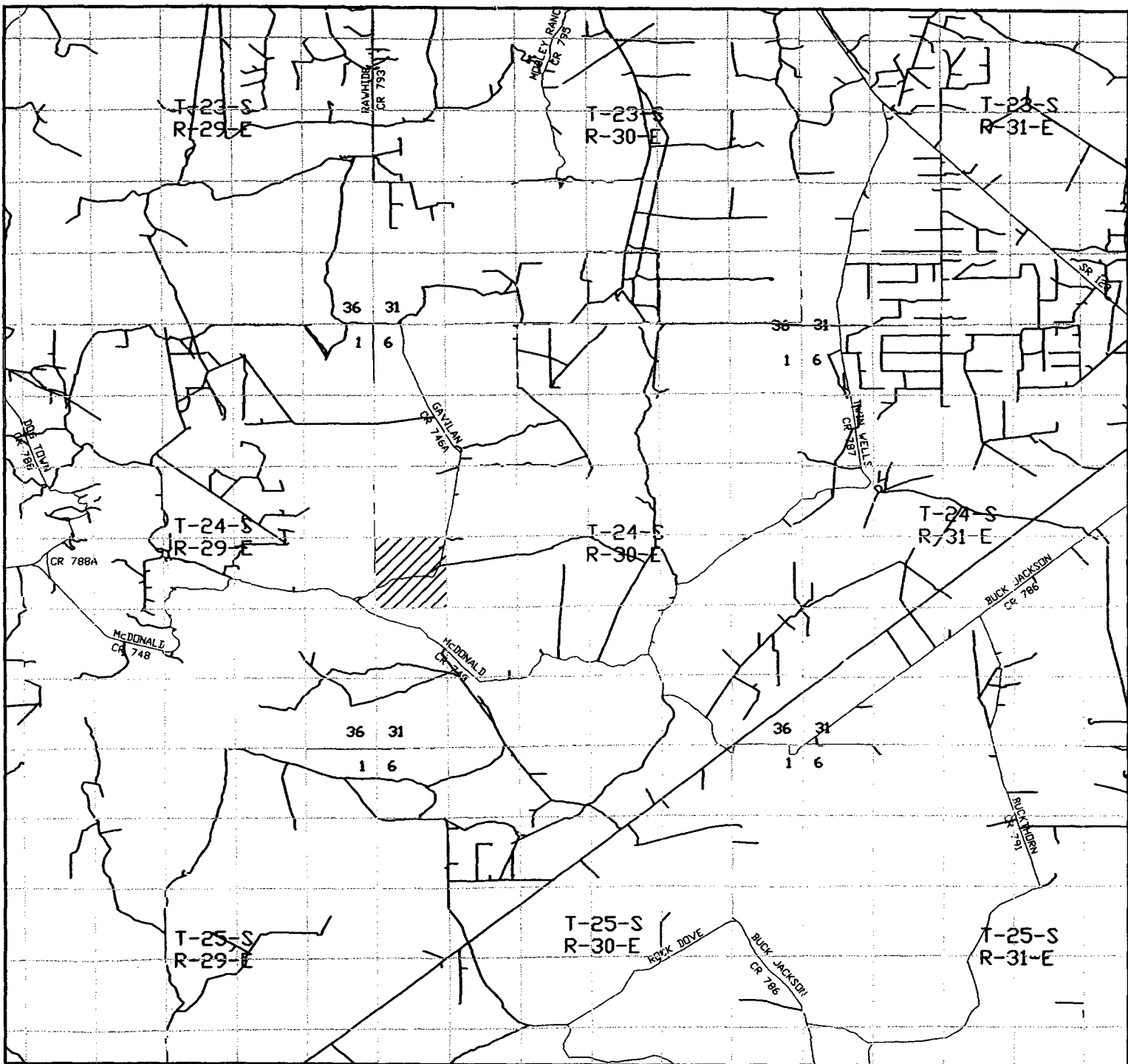
W.O. Number: 4143AA - KJG #7

Survey Date: 04-15-2004

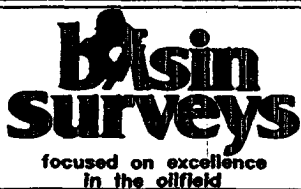
Scale: 1" = 2000'

Date: 04-23-2004

**BASS ENTERPRISES
 PRODUCTION CO.**



POKER LAKE UNIT #216
 Located at 1980' FNL and 1780' FEL
 Section 19, Township 24 South, Range 30 East,
 N.M.P.M., Eddy County, New Mexico.



P.O. Box 1786
 1120 N. West County Rd.
 Hobbs, New Mexico 88241
 (505) 393-7316 - Office
 (505) 392-3074 - Fax
 basinsurveys.com

W.O. Number: 4143AA - KJG #7

Survey Date: 04-15-2004

Scale: 1" = 2 MILES

Date: 04-23-2004

**BASS ENTERPRISES
 PRODUCTION CO.**