

# State of New Mexico

Energy, Minerals and Natural Resources Department

## DISTRICT I

1625 N. FRENCH DR., HOBBBS, NM 88240

## DISTRICT II

1301 W. GRAND AVENUE, ARTESIA, NM 88210

## DISTRICT III

1000 Rio Brazos Rd., Aztec, NM 87410

## DISTRICT IV

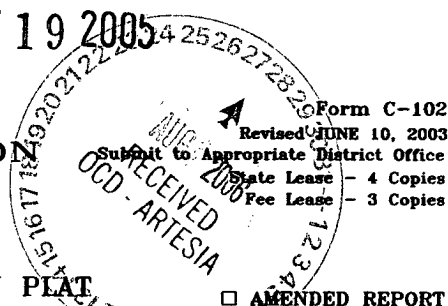
1220 S. ST. FRANCIS DR., SANTA FE, NM 87505

## OIL CONSERVATION DIVISION

1220 SOUTH ST. FRANCIS DR.

Santa Fe, New Mexico 87505

NOT 19 2005



Form C-102  
Revised JUNE 10, 2003  
Submit to Appropriate District Office  
State Lease - 4 Copies  
Fee Lease - 3 Copies

## WELL LOCATION AND ACREAGE DEDICATION PLAT

☐ AMENDED REPORT

|                                   |   |  |
|-----------------------------------|---|--|
| API Number<br><b>30-015-34394</b> | Pool Code<br><b>96830</b>                         | Pool Name<br><b>ARTESIA; GLORIETA-YESO (O)</b> |
| Property Code                     | Property Name<br><b>A STATE</b>                   | Well Number<br><b>1</b>                        |
| OGRID No.<br><b>14049</b>         | Operator Name<br><b>MARBOB ENERGY CORPORATION</b> | Elevation<br><b>3681'</b>                      |

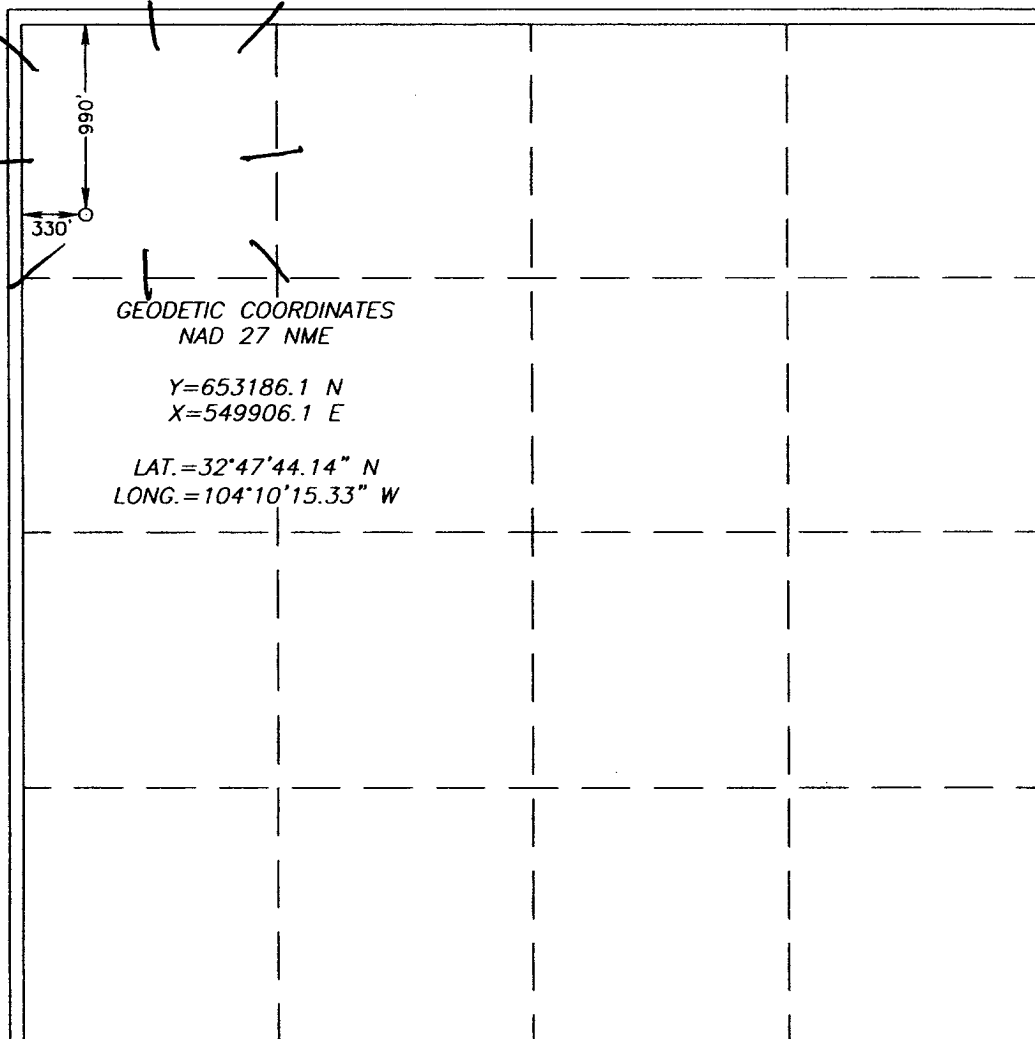
### Surface Location

| UL or lot No. | Section | Township | Range | Lot Idn | Feet from the | North/South line | Feet from the | East/West line | County |
|---------------|---------|----------|-------|---------|---------------|------------------|---------------|----------------|--------|
| D             | 34      | 17-S     | 28-E  |         | 990           | NORTH            | 330           | WEST           | EDDY   |

### Bottom Hole Location If Different From Surface

| UL or lot No.                | Section         | Township           | Range     | Lot Idn | Feet from the | North/South line | Feet from the | East/West line | County |
|------------------------------|-----------------|--------------------|-----------|---------|---------------|------------------|---------------|----------------|--------|
|                              |                 |                    |           |         |               |                  |               |                |        |
| Dedicated Acres<br><b>40</b> | Joint or Infill | Consolidation Code | Order No. |         |               |                  |               |                |        |

NO ALLOWABLE WILL BE ASSIGNED TO THIS COMPLETION UNTIL ALL INTERESTS HAVE BEEN CONSOLIDATED  
OR A NON-STANDARD UNIT HAS BEEN APPROVED BY THE DIVISION



### OPERATOR CERTIFICATION

I hereby certify the the information contained herein is true and complete to the best of my knowledge and belief.

*Nancy T. Bratcher*  
Signature

**NANCY T. BRATCHER**  
Printed Name

**LAND DEPARTMENT**  
Title

**8/25/06**  
Date

### SURVEYOR CERTIFICATION

I hereby certify that the well location shown on this plat was plotted from field notes of actual surveys made by me or under my supervision and that the same is true and correct to the best of my belief.

**OCTOBER 12, 2005**

Date Surveyed \_\_\_\_\_ LA

Signature & Seal of Professional Surveyor  
*Ronald S. Edson*  
Professional Surveyor  
3239  
05.11.1532

Certificate No. **RONALD S. EDSON 3239**