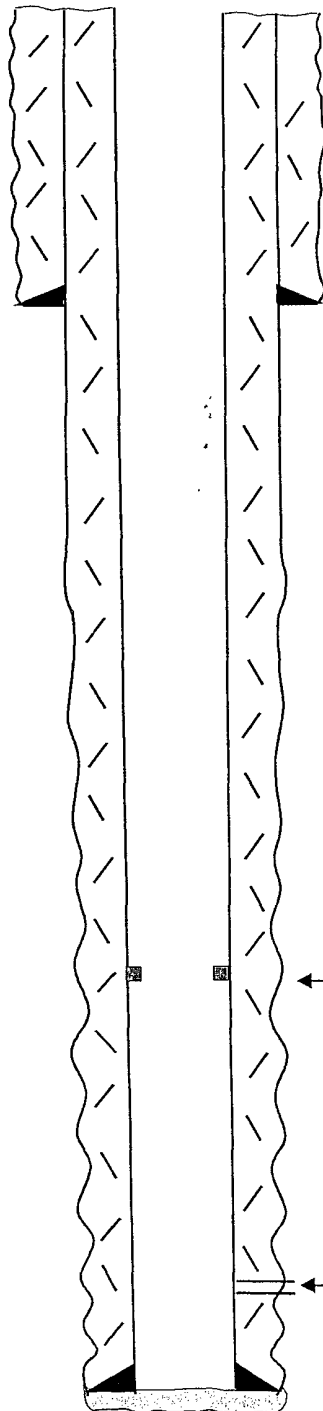


WELL NAME: Saguaro AGS Federal #13 FIELD: Dagger Draw
 LOCATION: 660' FNL & 1,980' FEL of Section 13-11S-24E Eddy Co., NM
 GL: 3,620' ZERO: 18' KB: 3,638'
 SPUD DATE: 6/7/92 COMPLETION DATE: 7/3/92
 COMMENTS: API No.: 30-015-27014

CASING PROGRAM

9-5/8" 36# J55		1,112'
7" 26# J55 LTC	1,220'	
7" 26* J55 LTC	4,760'	
7" 26# J55 LTC	2,587'	
7" 26# N80 LTC	633'	8200'

14-3/4" Hole



Before

9-5/8" @ 1,112'
w/1400 sx cmt (Circ)

TOPS

SA 514'
 Glorieta 2,080'
 BS 3,418'
 WC Lm 5,409'
 Canyon Lm 7,555'

8-3/4" Hole

DV @ 5,600'

Comments:

7/92 7,734-7,798' 15,000
 g 205 9.8 @ 3150#
 7,734-7,766' 900 g
 205 5.1 @ 800#
 7,794-98' 300 g 20%
 5.6 @ 1130#
 7,825-37' 5000g
 20% 5.5 @ 890#
 9/92 6500 g. 20%

Canyon Perfs: 7,734-7,837' (48)

TD: 8,200'

7" @ 8,200'
 1st Stage: 760 sx (Circ)
 2nd Stage: 960 sx (Circ)

**Accepted for record
 NMOCD**

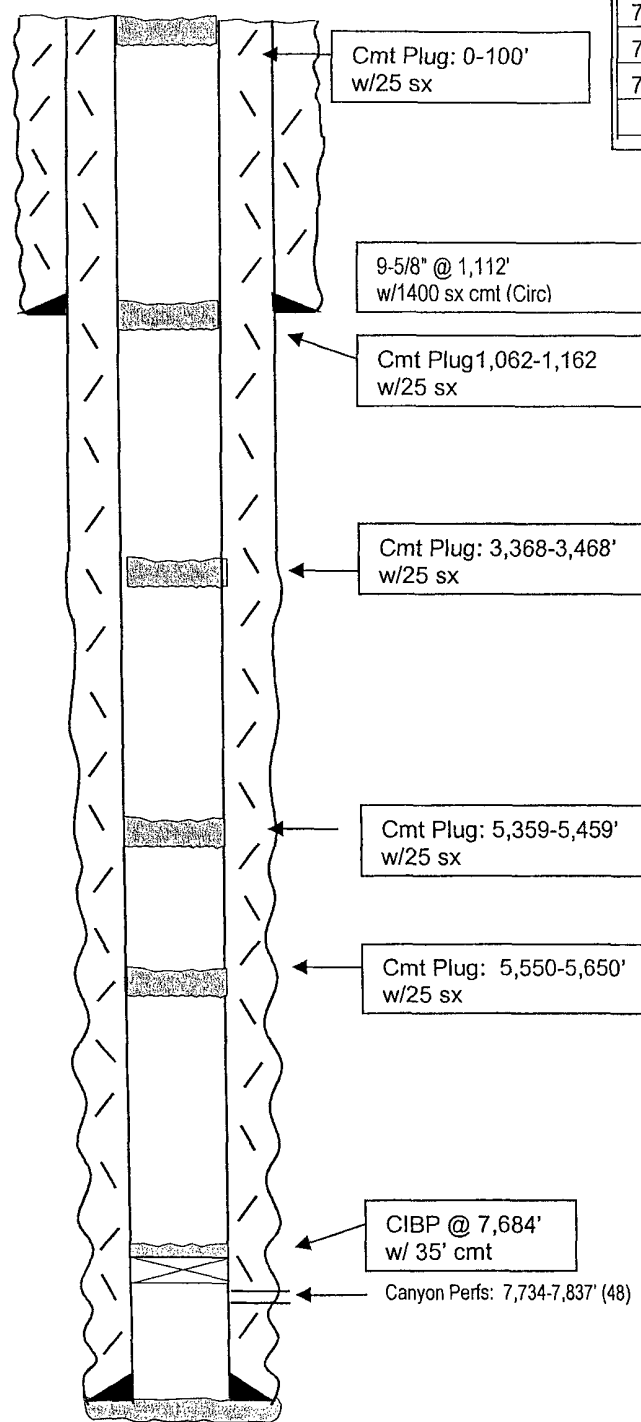
Not to Scale
 11/22/06
 DC/Moss

WELL NAME: Saguaro AGS Federal #13 FIELD: Dagger Draw
 LOCATION: 660' FNL & 1,980' FEL of Section 13-11S-24E Eddy Co., NM
 GL: 3,620' ZERO: 18' KB: 3,638'
 SPUD DATE: 6/7/92 COMPLETION DATE: 7/3/92
 COMMENTS: API No.: 30-015-27014

CASING PROGRAM

9-5/8" 36# J55		1,112'
7" 26# J55 LTC	1,220'	
7" 26* J55 LTC	4,760'	
7" 26# J55 LTC	2,587'	
7" 26# N80 LTC	633'	8200'

14-3/4" Hole



8-3/4 Hole

TD: 8,200'

7" @ 8,200'
 1st Stage: 760 sx (Circ)
 2nd Stage: 960 sx (Circ)

After

TOPS

SA	514'
Glorieta	2,080'
BS	3,418'
WC Lm	5,409'
Canyon Lm	7,555'

Comments:
 7/92 7,734-7,798' 15,000
 g 205 9.8 @ 3150#
 7,734-7,766' 900 g
 205 5.1 @ 800#
 7,794-98' 300 g 20%
 5.6 @ 1130#
 7,825-37' 5000g
 20% 5.5 @ 890#
 9/92 6500 g. 20%

**Accepted for record
 NMOCD**

Not to Scale
 11/22/06
 DC/Moss