

OCD-ARTESIA

SUBMIT IN TRIPLICATE\*

Form approved.

Budget Bureau No. 1004-0136

Expires: December 31, 1991

K-06-19

**UNITED STATES  
DEPARTMENT OF THE INTERIOR  
BUREAU OF LAND MANAGEMENT**

(Other Instructions on reverse side)

1457

**APPLICATION FOR PERMIT TO DRILL OR DEEPEN****1a. TYPE OF WORK**DRILL ☒DEEPEN ☐**b. TYPE OF WELL**OIL WELL ☐Gas Well ☒

OTHER

SINGLE ZONE ☐MULTIPLE ZONE ☐**2. NAME OF OPERATOR**

Mack Energy Corporation

**3. ADDRESS AND TELEPHONE NO.**

P.O. Box 960, Artesia, NM 88211-0960

(505) 748-1288

**4. LOCATION OF WELL (Report location clearly and in accordance with any state requirement.)\***

At surface

660 FSL &amp; 660 FWL

At proposed prod. zone

660 FNL &amp; 660 FWL

**14. DISTANCE IN MILES AND DIRECTION FROM NEAREST TOWN OR POST OFFICE\***

7 miles southeast of Hope, NM

**15. DISTANCE FROM PROPOSED\* LOCATION TO NEAREST PROPERTY OR LEASE LINE, FT. (Also to nearest drlg. unit line, if any)**

660

**16. NO. OF ACRES IN LEASE**

1120

**17. NO OF ACRES IN LEASE TO THIS WELL**

320

**18. DISTANCE FROM PROPOSED LOCATION\* TO NEAREST WELL, DRILLING, COMPLETED OR APPLIED FOR, ON THIS LEASE, FT.**

N/A

**19. PROPOSED DEPTH**

8200

**20. ROTARY OR CABLE TOOLS**

Rotary

**21. ELEVATIONS (Show whether DF, RT, GR, etc.)**

3889' GR

**22. APPROX. DATE WORK WILL START\***

9/7/2006

**23.****PROPOSED CASING AND CEMENTING PROGRAM****ROSWELL CONTROLLED WATER BASIN**

SIZE OF HOLE	GRADE, SIZE OF CASING	WEIGHT PER FOOT	SETTING DEPTH	QUANTITY OF CEMENT
17 1/2	H-40, 13 3/8	48	450	Circ
12 1/4	J-55, 9 5/8	36	1400	Suff to Circ
7 7/8	J-55, 5 1/2	17	8200	Suff to Circ

Mack Energy proposes to drill to a vertical hole to +/- 4900', drill horizontal appr. 3960' north test the Wolfcamp formation. Run 5 1/2" casing and cement. If non-productive, the well will be plugged and abandoned in a manner consistent with federal regulation. Specific programs as per Onshore Oil and Gas Order #1 are outlined in the following attachments:

**1. Surveys**

Exhibit #1- Well Location Plat

Exhibit #2- Vicinity Map

Exhibit #3- Location Verification Map

**4. Certification****7. Responsibility Statement****2. Drilling Program****3. Surface Use & Operating Plan**

Exhibit #4- One Mile Radius Map

Exhibit #5- Production Facilities Layout

Exhibit #6- Location Layout

**6. Blowout Preventers**

Exhibit #9- BOPE Schematic

Exhibit #10- Blowout Preventer Requirements

Exhibit #11- Choke Manifold

**APPROVAL SUBJECT TO  
GENERAL REQUIREMENTS  
AND SPECIAL STIPULATIONS  
ATTACHED**

IN ABOVE SPACE DESCRIBE PROPOSED PROGRAM: If proposal is to deepen, give data on present productive zone and proposed new productive zone. If proposal is to drill or deepen directionally, give pertinent data on subsurface locations and measured and true vertical depths. Give blowout preventer program, if any.

24. SIGNED Jerry W. Sherrill TITLE Production Clerk DATE 8/7/2006

(This space for Federal or State office use)

PERMIT NO. \_\_\_\_\_

APPROVAL DATE \_\_\_\_\_

Application approval does not warrant or certify that the applicant holds legal or equitable title to those rights in the subject CONDITIONS OF APPROVAL, IF ANY:

/s/ James Stovall

**ACTING  
FIELD MANAGER**

APPROVED BY \_\_\_\_\_

TITLE \_\_\_\_\_

DATE \_\_\_\_\_

NOV 03 2006

\*See Instructions On Reverse Side

**APPROVAL FOR 1 YEAR**

Title 18 U.S.C. Section 1001, makes it a crime for any person knowingly and willfully to make to any department or agency of the United States any false, fictitious or fraudulent statements or representations as to any matter within its jurisdiction.

## State of New Mexico

Energy, Minerals and Natural Resources Department

Form C-102

Revised 12/18/2005

Submit to Appropriate District Office

State Lease - 4 Copies

Fee Lease - 3 Copies

## DISTRICT I

1825 N. FRENCH DR., BOBBS, NM 88240

## DISTRICT II

1301 W. GRAND AVENUE, ARTESIA, NM 88210

## DISTRICT III

1000 Rio Brazos Rd., Aztec, NM 87410

## DISTRICT IV

1220 S. ST. FRANCIS DR., SANTA FE, NM 87505

## OIL CONSERVATION DIVISION

1220 SOUTH ST. FRANCIS DR.  
Santa Fe, New Mexico 87505

## WELL LOCATION AND ACREAGE DEDICATION PLAT

☐ AMENDED REPORT

API Number	Pool Code <b>97512</b>	Pool Name <b>Undes. Rid-Pena s.c.; WOLFCAMP</b>
Property Code	Property Name <b>JAMES FEDERAL COM</b>	Well Number <b>1</b>
OGRID No. <b>013837</b>	Operator Name <b>MACK ENERGY CORPORATION</b>	Elevation <b>3889'</b>

## Surface Location

UL or lot No.	Section	Township	Range	Lot Idn	Feet from the	North/South line	Feet from the	East/West line	County
M	12	18-S	23-E		660	SOUTH	660	WEST	EDDY

## Bottom Hole Location If Different From Surface

UL or lot No.	Section	Township	Range	Lot Idn	Feet from the	North/South line	Feet from the	East/West line	County
D	12	18S	23E		660	NORTH	660	WEST	EDDY

Dedicated Acres	Joint or Infill	Consolidation Code	Order No.
320			

NO ALLOWABLE WILL BE ASSIGNED TO THIS COMPLETION UNTIL ALL INTERESTS HAVE BEEN CONSOLIDATED  
OR A NON-STANDARD UNIT HAS BEEN APPROVED BY THE DIVISION

<p>PROJECT AREA</p> <p>BHL</p> <p>PRODUCING AREA</p> <p>GEODETIC COORDINATES NAD 27 NME</p> <p>Y=639262.5 N X=402353.1 E</p> <p>LAT.=32.757023° N LONG.=104.650965° W</p>	<p><b>OPERATOR CERTIFICATION</b></p> <p>I hereby certify that the information herein is true and complete to the best of my knowledge and belief, and that this organization either owns a working interest or unleased mineral interest in the land including the proposed bottom hole location or has a right to drill this well at this location pursuant to a contract with an owner of such mineral or working interest, or to a voluntary pooling agreement or a compulsory pooling order heretofore entered by the division.</p> <p><i>Jerry W. Sherrell</i> 8/7/06 Signature Date</p> <p>Jerry W. Sherrell Printed Name</p> <p><b>SURVEYOR CERTIFICATION</b></p> <p>I hereby certify that the well location shown on this plat was plotted from field notes of actual surveys made by me or under my supervision, and that the same is true and correct to the best of my belief.</p> <p><i>Ronald J. Eidson</i> 7/24/06 Signature &amp; Seal of Professional Surveyor</p> <p>RONALD J. EIDSON JULY 17, 2006 Date Surveyed</p> <p>Certificate No. GARY EIDSON 12641 RONALD J. EIDSON 3239</p>
---	---

Attached to Form 3160-3  
Mack Energy Corporation  
James Federal Com #1  
Surface 660 FSL & 660 FWL, BHL 660 FNL & 660 FWL  
SW/4 SW/4, Sec 12 T18S R23E  
Eddy County, NM

## DRILLING PROGRAM

### 1. Geologic Name of Surface Formation

Quaternary

### 2. Estimated Tops of Important Geologic Markers:

San Andres	375'
Glorietta	1700'
Tubb	3000'
Abo Shale	3645'
Wolfcamp	4710'

### 3. Estimated Depths of Anticipated Fresh Water, Oil and Gas:

Water Sand	750'	Fresh Water
Abo Carbonate	3825'	Oil/Gas
Wolfcamp	4710'	Oil/Gas

No other formations are expected to give up oil, gas or fresh water in measurable quantities. Set 13 3/8" casing to 450' and circulating cement back to surface. Set 9 5/8" casing to 1400' and circulating cement back to surface. Any shallower zones above TD, which contain commercial quantities of oil and/or gas, will have cement circulated across them by cementing 5 1/2" production casing, which will be run at TD.

### 4. Casing Program:

Hole Size	Interval	OD Casing	Weight, Grade, Jt, Cond., Type
17 1/2"	0-450'	13 3/8"	48#, H-40, ST&C, New, R-3
12 1/4"	0-1400'	9 5/8"	36#, J-55, ST&C, New, R-3
7 7/8"	0-TD	5 1/2"	17#, J-55, LT&C, New, R-3

### 5. Cement Program:

13 3/8" Surface Casing: Circulate to Surface with Class C w/2% CaCl<sub>2</sub>.

9 5/8" Intermediate Casing: Circulate to Surface with Class C W/2% CaCl<sub>2</sub>.

5 1/2" Production Casing: Cement Casing with Class C w/6# Salt & 2/10 of 1% CFR-3 per sack. We will run a hole caliper and run sufficient cement to circulate to surface.

### 6. Minimum Specifications for Pressure Control:

Attached to Form 3160-3  
Mack Energy Corporation  
James Federal Com #1  
Surface 660 FSL & 660 FWL, BHL 660 FNL & 660 FWL  
SW/4 SW/4, Sec 12 T18S R23E  
Eddy County, NM

The blowout preventer equipment (BOP) shown in Exhibit #9 will consist of a double ram-type (2000 psi WP) preventer. This unit will be hydraulically operated and the ram type preventer will be equipped with blind rams on top of 4 1/2" drill pipe rams on bottom. If ran the BOP will be nipped up on the 13 3/8" surface casing and tested to 1500 psi by a 3<sup>rd</sup> party. The BOP will then be nipped up on the 9 5/8" intermediate casing and tested by a 3<sup>rd</sup> party to 2000 psi and used continuously until TD is reached. All BOP's and accessory equipment will be tested to 2000 psi before drilling out of intermediate casing. Pipe rams will be operationally checked each 24-hour period. Blind rams will be operationally checked on each trip out of the hole. These checks will be noted on the daily tour sheets. Other accessories to the BOP equipment (Exhibit #10) will include a Kelly cock and floor safety valve and choke lines and choke manifold (Exhibit #11) with 2000 psi WP rating.

**7. Types and Characteristics of the Proposed Mud System:**

The well will be drilled to TD with a combination of brine, cut brine and polymer mud system. The applicable depths and properties of this system are as follows:

DEPTH	TYPE	WEIGHT	VISCOSITY	WATERLOSS
0-1400'	Fresh Water	8.5	28	N.C.
1400'-TD	Cut Brine	9.1	29	N.C.

Sufficient mud materials to maintain mud properties and meet minimum lost circulation and weight increase requirements will be kept at the well site at all times.

**8. Auxiliary Well Control and Monitoring Equipment:**

- A. Kelly cock will be kept in the drill string at all times.
- B. A full opening drill pipe-stabbing valve with proper drill pipe connections will be on the rig floor at all times.

**9. Logging, Testing and Coring Program:**

- A. The electric logging program will consist of GR-Dual Laterolog, Spectral Density, Dual Spaced Neutron, CSNG Log and will be ran from T.D. to 9 5/8 casing shoe.
- B. Drill Stem test is not anticipated.
- C. No conventional coring is anticipated.
- D. Further testing procedures will be determined after the 5 1/2" production casing has been cemented at TD based on drill shows and log evaluation.

**10. Abnormal Conditions, Pressures, Temperatures and Potential Hazards:**

Attached to Form 3160-3  
Mack Energy Corporation  
James Federal Com #1  
Surface 660 FSL & 660 FWL, BHL 660 FNL & 660 FWL  
SW/4 SW/4, Sec 12 T18S R23E  
Eddy County, NM

No abnormal pressures or temperatures are anticipated. The estimated bottom hole at TD is 110 degrees and estimated maximum bottom hole pressure is 2300 psig. Low levels of Hydrogen sulfide have been monitors in producing wells in the area, so H2S may be present while drilling of the well a plan is attached to the Drilling program. No major loss of circulation zones has been reported in offsetting wells.

**11. Anticipated Starting Date and Duration of Operations:**

Road and location work will not begin until approval has been received from the BLM. The anticipated spud date is September 7, 2006. Once commenced, the drilling operation should be finished in approximately 60 days. If the well is productive, an additional 30 days will be required for completion and testing before a decision is made to install permanent facilities.

## Mack Energy Corporation

### Hydrogen Sulfide Drilling Operation Plan

#### I. HYDROGEN SULFIDE TRAINING

All personnel, whether regularly assigned, contracted, or employed on an unscheduled basis, will receive training from a qualified instructor in the following areas prior to commencing drilling operations on this well:

1. The hazards and characteristics of hydrogen sulfide (H<sub>2</sub>S)
2. The proper use and maintenance of personal protective equipment and life support systems.
3. The proper use of H<sub>2</sub>S detectors, alarms, warning systems, briefing areas, evacuation procedures, and prevailing winds.
4. The proper techniques for first aid and rescue procedures.

In addition, supervisory personnel will be trained in the following areas:

1. The effects of H<sub>2</sub>S on metal components. If high tensile tubular are to be used, personnel will be trained in their special maintenance requirements.
2. Corrective action and shut-in procedures when drilling or reworking a well and blowout prevention and well control procedures.
3. The contents and requirements of the H<sub>2</sub>S Drilling Operations Plan and Public Protection Plan.

There will be an initial training session just prior to encountering a known or probable H<sub>2</sub>S zone (within 3 days or 500 feet) and weekly H<sub>2</sub>S and well control drills for all personnel in each crew. The initial training session shall include a review of the site specific H<sub>2</sub>S Drilling Operations Plan and the Public Protection Plan. **The concentrations of H<sub>2</sub>S of wells in this area from surface to TD are low enough that a contingency plan is not required.**

## II. H2S SAFETY EQUIPMENT AND SYSTEMS

Note: All H2S safety equipment and systems will be installed, tested, and operational when drilling reaches a depth of 500 feet above, or three days prior to penetrating the first zone containing or reasonable expected to contain H2S.

### 1. Well Control Equipment:

- A. Flare line.
- B. Choke manifold.
- C. Blind rams and pipe rams to accommodate all pipe sizes with properly sized closing unit.
- D. Auxiliary equipment may include if applicable: annular preventer & rotating head.

### 2. Protective equipment for essential personnel:

- A. Mark II Survive air 30-minute units located in the doghouse and at briefing areas, as indicated on well site diagram.

### 3. H2S detection and monitoring equipment:

- A. 1 portable H2S monitors positioned on location for best coverage and response. These units have warning lights and audible sirens when H2S levels of 20 PPM are reached.

### 4. Visual warning systems:

- A. Wind direction indicators as shown on well site diagram (Exhibit #8).
- B. Caution/Danger signs (Exhibit #7) shall be posted on roads providing direct access to location. Signs will be painted a high visibility yellow with black lettering of sufficient size to be readable at a reasonable distance from the immediate location. Bilingual signs will be used, when appropriate. See example attached.

### 5. Mud program:

- A. The mud program has been designed to minimize the volume of H2S circulated to surface. Proper mud weight, safe drilling practices, and the use of H2S scavengers will minimize hazards when penetrating H2S bearing zones.

**6. Metallurgy:**

- A. All drill strings, casings, tubing, wellhead, blowout preventer, drilling spool, kill lines, choke manifold and lines, and valves shall be suitable for H<sub>2</sub>S service.
- B. All elastomers used for packing and seals shall be H<sub>2</sub>S trim.

**7. Communication:**

- A. Radio communications in company vehicles including cellular telephone and 2-way radio.
- B. Land line (telephone) communication at Office.

**8. Well testing:**

- A. Drill stem testing will be performed with a minimum number of personnel in the immediate vicinity, which are necessary to safely and adequately conduct the test. The drill stem testing will be conducted during daylight hours and formation fluids will not be flowed to the surface. All drill-stem-testing operations conducted in an H<sub>2</sub>S environment will use the closed chamber method of testing.
- B. There will be no drill stem testing.

**EXHIBIT #7**

**WARNING**  
**YOU ARE ENTERING AN H<sub>2</sub>S**  
**AUTHORIZED PERSONNEL ONLY**

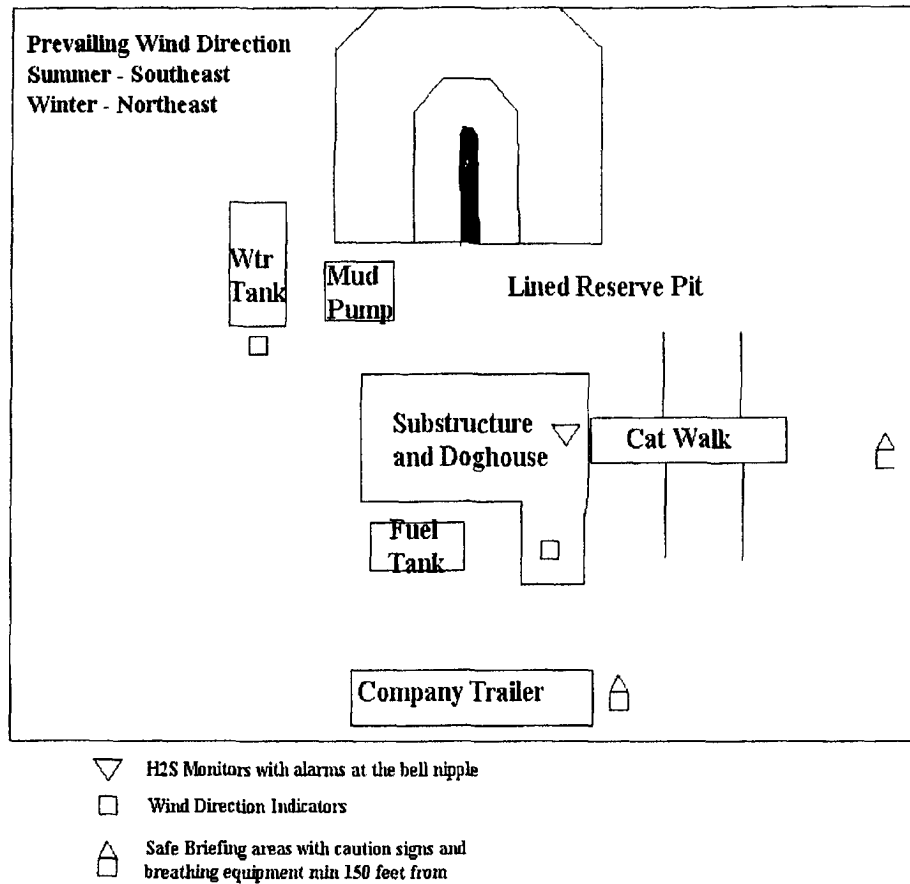
- 1. BEARDS OR CONTACT LENSES NOT ALLOWED**
- 2. HARD HATS REQUIRED**
- 3. SMOKING IN DESIGNATED AREAS ONLY**
- 4. BE WIND CONSCIOUS AT ALL TIMES**
- 5. CHECK WITH MACK ENERGY FOREMAN AT OFFICE**

**MACK ENERGY CORPORATION**

**1-505-748-1288**



**DRILLING LOCATION H2S SAFTY EQUIPMENT**  
Exhibit # 8



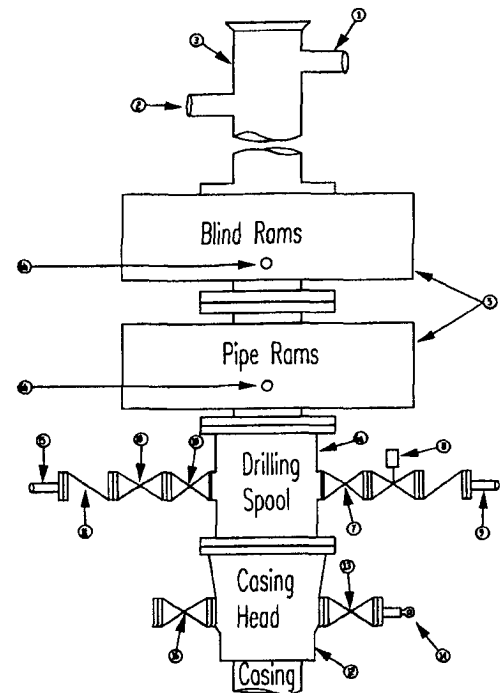
**Mack Energy Corporation**  
**Minimum Blowout Preventer Requirements**  
**2000 psi Working Pressure**  
**2 MWP**  
**EXHIBIT #10**

**Stack Requirements**

NO.	Items	Min. I.D.	Min. Nominal
1	Flowline		2"
2	Fill up line		2"
3	Drilling nipple		
4	Annular preventer		
5	Two single or one dual hydraulically operated rams		
6a	Drilling spool with 2" min. kill line and 3" min choke line outlets		2" Choke
6b	2" min. kill line and 3" min. choke line outlets in ram. (Alternate to 6a above)		
7	Valve Gate Plug	3 1/8	
8	Gate valve-power operated	3 1/8	
9	Line to choke manifold		3"
10	Valve Gate Plug	2 1/16	
11	Check valve	2 1/16	
12	Casing head		
13	Valve Gate Plug	1 13/16	
14	Pressure gauge with needle valve		
15	Kill line to rig mud pump manifold		2"

**OPTIONAL**

16	Flanged Valve	1 13/16	
----	---------------	---------	--



**CONTRACTOR'S OPTION TO FURNISH:**

1. All equipment and connections above bradenhead or casinghead. Working pressure of preventers to be 2000 psi minimum.
2. Automatic accumulator (80 gallon, minimum) capable of closing BOP in 30 seconds or less and, holding them closed against full rated working pressure.
3. BOP controls, to be located near drillers' position.
4. Kelly equipped with Kelly cock.
5. Inside blowout preventer or its equivalent on derrick floor at all times with proper threads to fit pipe being used.
6. Kelly saver-sub equipped with rubber casing protector at all times.
7. Plug type blowout preventer tester.
8. Extra set pipe rams to fit drill pipe in use on location at all times.
9. Type RX ring gaskets in place of Type R.

**MEC TO FURNISH:**

1. Bradenhead or casing head and side valves.
2. Wear bushing. If required.

**GENERAL NOTES:**

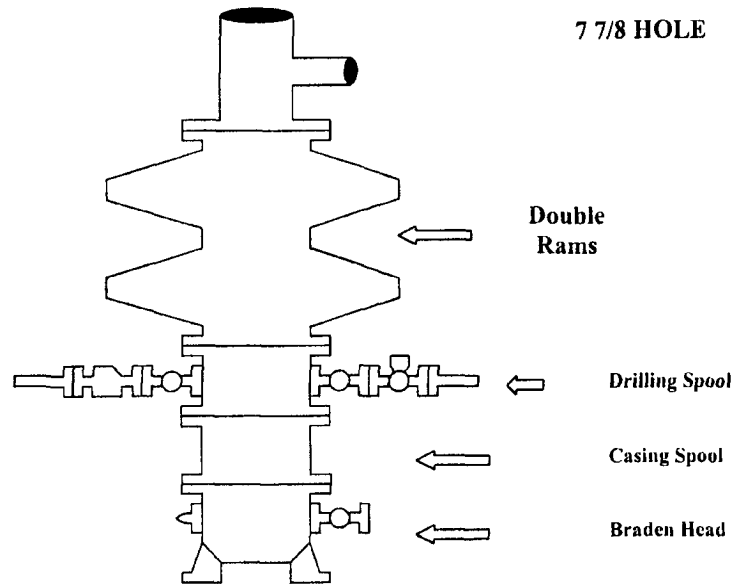
1. Deviations from this drawing may be made only with the express permission of MEC's Drilling Manager.
2. All connections, valves, fittings, piping, etc., subject to well or pump pressure must be flanged (suitable clamp connections acceptable) and have minimum working pressure equal to rated working pressure of preventers up through choke valves must be full opening and suitable for high pressure mud service.
3. Controls to be of standard design and each marked, showing opening and closing position.
4. Chokes will be positioned so as not to hamper or delay changing of choke beans. Replaceable parts for adjustable choke, or bean

sizes, retainers, and choke wrenches to be conveniently located for immediate use.

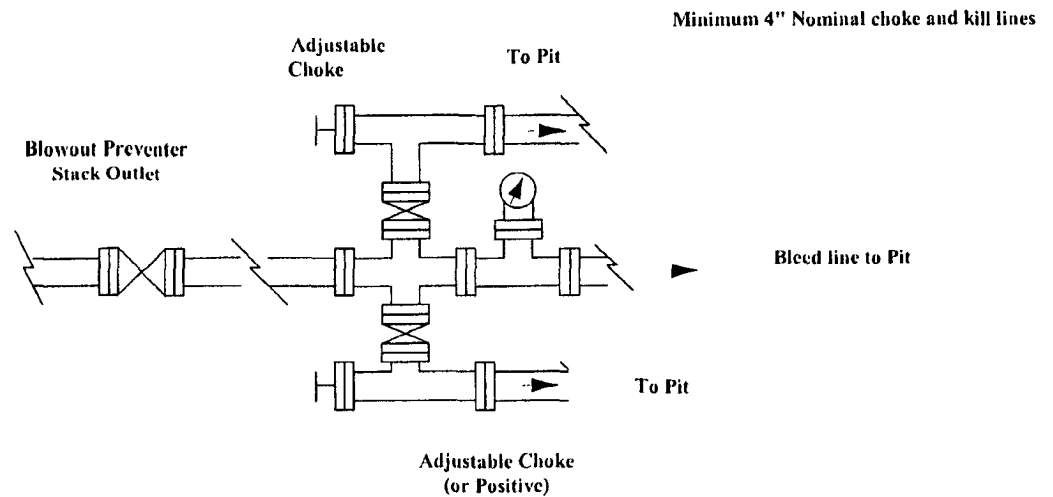
5. All valves to be equipped with hand-wheels or handles ready for immediate use.
6. Choke lines must be suitably anchored.
7. Handwheels and extensions to be connected and ready for use.
8. Valves adjacent to drilling spool to be kept open. Use outside valves except for emergency.
9. All seamless steel control piping (2000 psi working pressure) to have flexible joints to avoid stress. Hoses will be permitted.
10. Casinghead connections shall not be used except in case of emergency.
11. Do not use kill line for routine fill up operations.

# Mack Energy Corporation

## Exhibit #9 BOPE Schematic



Choke Manifold Requirement (2000 psi WP)  
No Annular Required



**Mack Energy Corporation**

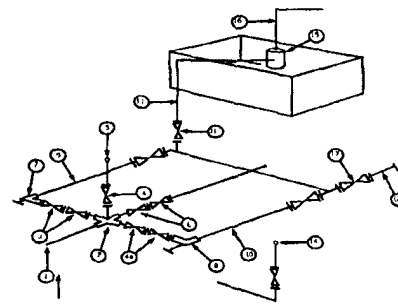
Exhibit #11

**MINIMUM CHOKE MANIFOLD**

3,000, 5,000, and 10,000 PSI Working Pressure

2 M will be used or greater

3 MWP - 5 MWP - 10 MWP



Mud Pit

Reserve Pit

\* Location of separator optional

Below Substructure

**Minimum requirements**

No.		3,000 MWP			5,000 MWP			10,000 MWP		
		I.D.	NOMINAL	Rating	I.D.	Nominal	Rating	I.D.	Nominal	Rating
1	Line from drilling Spool		3"	3,000		3"	5,000		3"	10,000
2	Cross 3" x 3" x 3" x 2"			3,000			5,000			
2	Cross 3" x 3" x 3" x 2"									10,000
3	Valve Gate Plug	3 1/8		3,000	3 1/8		5,000	3 1/8		10,000
4	Valve Gate Plug	1 13/16		3,000	1 13/16		5,000	1 13/16		10,000
4a	Valves (1)	2 1/16		3,000	2 1/16		5,000	2 1/16		10,000
5	Pressure Gauge			3,000			5,000			10,000
6	Valve Gate Plug	3 1/8		3,000	3 1/8		5,000	3 1/8		10,000
7	Adjustable Choke (3)	2"		3,000	2"		5,000	2"		10,000
8	Adjustable Choke	1"		3,000	1"		5,000	2"		10,000
9	Line		3"	3,000		3"	5,000		3"	10,000
10	Line		2"	3,000		2"	5,000		2"	10,000
11	Valve Gate Plug	3 1/8		3,000	3 1/8		5,000	3 1/8		10,000
12	Line		3"	1,000		3"	1,000		3"	2,000
13	Line		3"	1,000		3"	1,000		3"	2,000
14	Remote reading compound Standpipe pressure gauge			3,000			5,000			10,000
15	Gas Separator		2' x 5'			2' x 5'			2' x 5'	
16	Line		4"	1,000		4"	1,000		4"	2,000
17	Valve Gate Plug	3 1/8		3,000	3 1/8		5,000	3 1/8		10,000

- (1) Only one required in Class 3M  
 (2) Gate valves only shall be used for Class 10 M  
 (3) Remote operated hydraulic choke required on 5,000 psi and 10,000 psi for drilling.

**EQUIPMENT SPECIFICATIONS AND INSTALLATION INSTRUCTION**

- All connections in choke manifold shall be welded, studded, flanged or Cameron clamp of comparable rating.
- All flanges shall be API 6B or 6BX and ring gaskets shall be API RX or BX. Use only BX for 10 MWP.
- All lines shall be securely anchored.
- Chokes shall be equipped with tungsten carbide seats and needles, and replacements shall be available.
- Choke manifold pressure and standpipe pressure gauges shall be available at the choke manifold to assist in regulating chokes. As an alternate with automatic chokes, a choke manifold pressure gauge shall be located on the rig floor in conjunction with the standpipe pressure gauge.
- Line from drilling spool to choke manifold should be as straight as possible. Lines downstream from chokes shall make turns by large bends or 90 degree bends using bull plugged tees.