

Form 3160-5
(February 2005)UNITED STATES
DEPARTMENT OF THE INTERIOR
BUREAU OF LAND MANAGEMENTFORM APPROVED
OMB No. 1004-0137
Expires: March 31, 2007

SUNDRY NOTICES AND REPORTS ON WELLS

Do not use this form for proposals to drill or to re-enter an abandoned well. Use Form 3160-3 (APD) for such proposals.

SUBMIT IN TRIPLICATE - Other instructions on page 2.

1. Type of Well

☐ Oil Well ☐ Gas Well ☒ Other DRY2. Name of Operator
CHESAPEAKE OPERATING, INC.

ATTN: LINDA GOOD

3a. Address
P. O. BOX 18496
OKLAHOMA CITY, OK 73154-04963b. Phone No. (include area code)
405-767-42754. Location of Well (Footage, Sec., T., R., M., or Survey Description)
1980' FSL & 660' FWL, NWSW, SECTION 4, T9S, R25E5. Lease Serial No.
NMNM-35925

6. If Indian, Allottee or Tribe Name

7. If Unit of CA/Agreement, Name and/or No.

8. Well Name and No.
DANA FEDERAL 99. API Well No.
30-005-6358310. Field and Pool or Exploratory Area
PECOS SLOPE11. Country or Parish, State
CHAVES COUNTY, NEW MEXICO

12. CHECK THE APPROPRIATE BOX(ES) TO INDICATE NATURE OF NOTICE, REPORT OR OTHER DATA

TYPE OF SUBMISSION

TYPE OF ACTION

☒ Notice of Intent☐ Acidize☐ Deepen☐ Production (Start/Resume)☐ Water Shut-Off☐ Subsequent Report☐ Alter Casing☐ Fracture Treat☐ Reclamation☐ Well Integrity☐ Final Abandonment Notice☐ Casing Repair☐ New Construction☐ Recomplete☐ Other☐ Change Plans☒ Plug and Abandon☐ Temporarily Abandon☐ Convert to Injection☐ Plug Back☐ Water Disposal

13. Describe Proposed or Completed Operation: Clearly state all pertinent details, including estimated starting date of any proposed work and approximate duration thereof. If the proposal is to deepen directionally or recompleat horizontally, give subsurface locations and measured and true vertical depths of all pertinent markers and zones. Attach the Bond under which the work will be performed or provide the Bond No. on file with BLM/BIA. Required subsequent reports must be filed within 30 days following completion of the involved operations. If the operation results in a multiple completion or recompleat in a new interval, a Form 3160-4 must be filed once testing has been completed. Final Abandonment Notices must be filed only after all requirements, including reclamation, have been completed and the operator has determined that the site is ready for final inspection.)

Chesapeake, respectfully, request permission to plug this well per the attached plugging procedure.

Accepted for record
NMOCD

(CHK PN 890019)

14. I hereby certify that the foregoing is true and correct.

Name (Printed/Typed)
LINDA GOOD

Title FEDERAL REGULATORY ANALYST

Signature

Linda Good

Date 02/07/2007

THIS SPACE FOR FEDERAL OR STATE OFFICE USE

Approved by

/S/ ALEXIS C. SWOBODA

Title PETROLEUM ENGINEER

Date FEB 08 2007

Conditions of approval, if any, are attached. Approval of this notice does not warrant or certify that the applicant holds legal or equitable title to those rights in the subject lease which would entitle the applicant to conduct operations thereon.

Office

Title 18 U.S.C. Section 1001 and Title 43 U.S.C. Section 1212, make it a crime for any person knowingly and willfully to make to any department or agency of the United States any false, fictitious or fraudulent statements or representations as to any matter within its jurisdiction.

(Instructions on page 2)

Dana Federal 9
Plug and Abandonment Procedure
Chaves County, New Mexico

1. Notify the BLM and/or NMOCD 24 hrs in advance prior to commencing plug and abandonment operations.
2. MIRU Wireline Service Unit. Set a CIBP at 3620'. Bail 2 – 3 sxs of cement on plug (35' minimum on plug). TIH w/ 2-3/8" tubing to new PBTD ~3585'. Circulate 4-1/2" casing with salt gel mud containing 9.5 pound brine and 25 lbs of gel per barrel.
3. Spot a 100' Class "C" Neat cmt plug from 2700-2800'. Shut in for 4 hrs and tag top of cement. Spot additional cement if needed.
4. Perforate 4 holes at 1050' and squeeze with sufficient cement (~40 sxs) to have a Neat cmt plug from 1050 - 950' (8-5/8" shoe). Shut in for 4 hrs and tag top of cement. Spot additional cement if needed.
5. Spot 60' Class "C" Neat cmt plug from 63-3'.
6. ND BOP. Cut off 8 - 5/8" and 4-1/2" casings 3' below Ground Level.
7. Weld on an ID plate. RD and release Well Service Unit. Restore location.

CURRENT WELLBORE SCHEMATIC

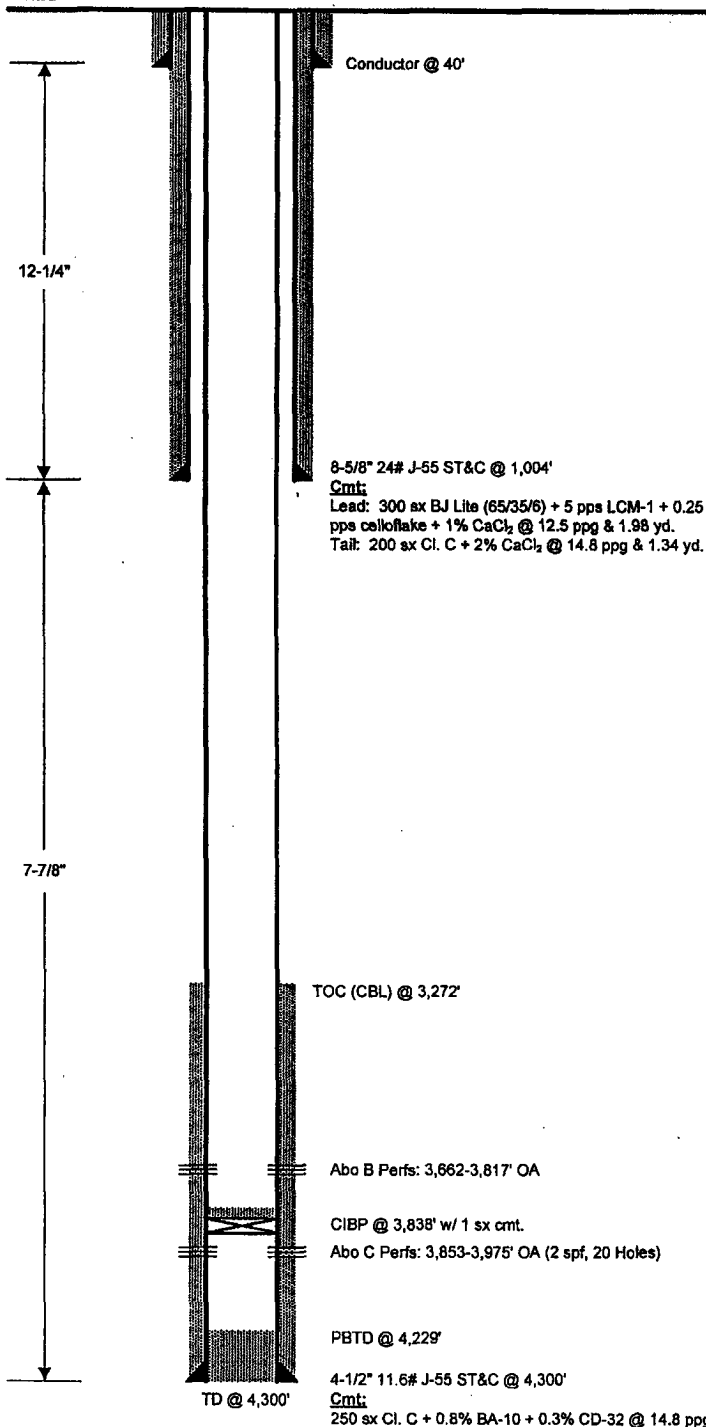
CHESAPEAKE OPERATING INC

WELL : DANA FEDERAL #9
 FIELD : PECOS SLOPE
 COUNTY : CHAVES STATE: NM
 OBJECTIVE : VERTICAL DEVELOPMENT WELL
 LOCATION : 1,980' FSL & 660' FWL, SEC. 4-T9S-R25E
 ELEVATION : 3,616' GL 3,626' RKB
 BLM LEASE :



API #: 30-005-63583
 SPUD DATE: 10/15/03
 RIG RELEASED: 10/26/03
 COMPL. DATE:

HOLE
SIZE



Well History:

COMPLETION

11/8/03: MIRU Pulling Unit.
 11/10/03: Run CBL/CCL/GR from PBTD 4229' to 3100'. Good cmt. 3520-4229', poor cmt. 3430-3620'. Perf Abo C @ 3853', 56', 57', 3907', 09', 11', 13', 15', 73' & 75' w/ 2 spf, 0.42' holes, 180 deg. ph. (20 holes). TIH w/ 5 ft. 2-3/8" tailpipe, pkr. SN & 119 jts. 2-3/8" tbg.
 11/11/03: Spot 150 gals 15% NeFe acid across perfs. Set pkr. @ 3616'. Acidize w/ 1500 gals 15% NeFe & 30 BS. Ball out w/ 20 BS on fmin. (20 holes). Surge balls. FTP 2420 psi @ 5 BPM. ISIP 1142 psi, 5 min 278 psi, 10 min 232 psi, 15 min 212 psi. MTR 5 BPM, ATR 5 BPM. MTP 1826 psi, Min TP 1570 psi, ATP 1650 psi. Rel pkr & lwr. to 3995 to clear balls off perfs. TOH w/ pkr. & tbg. ND BOP, ND WH. Prep to frac.
 11/12/03: Pump 10K gal. 65Q CO₂ Aquavis 30 linear gel pad. Frac Abo C w/ 25K gal 65Q CO₂ Aquavis 30 energized linear gel w/ 75K # 20/40 brown sand, ramping from 1 to 5 ppg. Flush w/ 2720 gal. Aquavis 10G linear gel. ISIP 1071 psi, 5 min 875 psi, 10 min 824 psi, 15 min 784 psi. Min TR 28.2 BPM, MTR 30.4 BPM, ATR 29.43 BPM. Min TP 2076 psi, MTP 2370 psi, ATP 2181 psi. Set fast drill CBP @ 3838'. Perf Abo B @ 3662', 65', 68', 71', 74', 3757', 60', 63', 66', 69', 3815', & 3817'. Acidize w/ 1150 gals 15% NeFe acid & 30 BS, flush w/ 70 bbls 2% KCl. ATP 880 psi, Min TP 418 psi, MTP 887 psi. ATR 6.4 BPM, Min. TR 6.4 BPM, MTR 6.5 BPM. ISIP 824 psi, 5 min 545 psi, 10 min 530 psi, 15 min 517 psi. TLTR 460 bbls (373 bbls frac, 87 bbls acid job)
 11/13/03: Frac Abo B w/ 10,080 gal 65Q CO₂ Aquavis 30 linear gel pad, 26,090 gals sand laden 65Q energized linear gel, ramping from 1 to 5 ppg w/ 76,920# 20/40 brown sand. Flush w/ 2485 gals. Aquavis 10G linear gel. ISIP 1218 psi, 5 min 1013 psi, 10 min 973 psi, 15 min 933 psi. ATR 29.4 BPM, Min TR 28.9 BPM, MTR 30.2 BPM. ATP 2277 psi, Min. TP 2056 psi, MTP 2370 psi. TLTR 377 bbls. 19 hr. FB on 14/84 ck. 650 psi CP. 162 BW, Est. 725 MCF.
 11/14/03: FB frac on 14/84" ck. Choke freezing, open to 20/64". CP 500 psi, 11 BW/hr, Est. 1214 mcf (CO₂). TLR 420 BW, 43 hrs.
 11/15/03: Post frac FB 87 hrs, rec total 568 bbls fluid (4 BW/hr. last 24 hrs.). Est. 522 mcf w/ 215 psi FCP on 20/64 ck. 18% CO₂.
 11/16/03: Post frac FB 86 hrs, rec total 629 bbls fluid (1 BW/hr. last 4 hrs.). Est. 212 mcf w/ 100 psi FCP on 20/64 ck. 5% CO₂.
 11/17/03: TIH w/ bit, tag @ 3835' KBM. Drill up Comp. BP and tag sand @ 4032'. Wash down to 4227'. Circ. bottoms up. SISD.
 11/18/03: Tag TD @ 4227' KBM. TOH w/ bit, TIH w/ notched collar, SN & tbg. SN @ 3844'. Flowed well off & on 16 hrs. up csg & tbg, 10 BW. SWI 1 hr., TP 190 psi, CP 90 psi. Will not lift fluid.
 11/19/03: RU to swab; IFL 3000'. Swab 15 BW in 3 hrs, FFL scattered. Making some CO₂.
 11/20/03: 15 hr. SITP 120 psi, SICP 320 psi. Open well, flwg. very little CO₂ & gas, 10 BW/H. 111 BW/21 hrs, open choke. FTP 80 psi, FCP 5 psi. FB total 588 BW from both zones.
 11/21/03: FB frac 8 hrs on 48/64 ck, TP 5 psi, CP 5 psi. Flwd. 10 bbls foam, very little gas or CO₂. SI 3 hrs, TP 5 psi, CP 160 psi, bled off in 10 mins., no fluid. SWI. Rec. 138 bbls. TLTR 460 bbls.
 11/22/03: 17 hr. SITP 220 psi, SICP 250 psi. Pump air down tbg, flow up csg. to clean up. Rec. approx. 42 bbls foam & water.
 11/23/03: 15 hr. SITP & SICP 245 psi. FB 19 hrs on 20/64 ck, FTP 121 psi, FCP 210 psi. Last 3 hrs 1 bbl foam/hr, 100% CO₂.
 11/24/03: TIH w/ slickline to 4224' TD; no fill.
 11/25/03: 24 hr ITP 270 psi, SICP 270 psi. Open tbg. on 20/64 ck, flow 7 bbls foam, little CO₂ in 8 hrs. TP 5 psi, CP 200 psi. SI.
 11/26/03: 17 hr. SITP 200 psi, SICP 260 psi. Leave SI until Mon.
 12/1/03: 144 hr SITP 400 psi, SICP 400 psi. Open on 64/64 ck, flowed back 60 BW in 8 hrs. FTP & FCP 3 psi; SI @ 3:30 pm.
 12/4-5/03: MIRU. Set CIBP @ 3838' w/ 1 sx cmt. RIH w/ tbg., SN @ 3852'. TIH w/ swab, IFL 3300'. Rec 8 BW in 15 min; SWI.
 12/8/03: TIH w/ swab, IFL 3200'. Rec 20 BW in 16 runs. FFL 3600'; SSOG @ 120 psi FCP. SION. 186 BSWTR.
 12/10/03: SITP 190 psi, SICP 200 psi. Open to pit, flowed 1 hr. & died. Rec. 2 BLW, FTP dead. to 0 psi, FCP to 100 psi. SWI.
 12/13/03: SITP 70 psi, SICP 140 psi. Open well, unloading slugs of foamy wtr. TIH w/ swab, IFL 3400'. Rec. 35 BLW. SSOG.
 12/15/03: SITP 120 psi, SICP 140 psi; Bled down tbg to 0 in 20 min. Fine mist for 1 hr. & died. Swab from SN, rec 50' fluid. SWI.
 12-22-04: POOH with tubing.

PREPARED BY : Ginni A. Kennedy

DATE : 10/28/03

UPDATED BY : A. McCalmont

DATE : 2/5/07