

Submit 3 Copies To Appropriate District  
Office  
District I  
1625 N. French Dr., Hobbs, NM 88240  
District II  
1301 W. Grand Ave., Artesia, NM 88210  
District III  
1000 Rio Brazos Rd., Aztec, NM 87410  
District IV  
1220 S. St. Francis Dr., Santa Fe, NM  
87505

State of New Mexico  
Energy, Minerals and Natural Resources

Form C-103  
May 27, 2004

OIL CONSERVATION DIVISION  
1220 South St. Francis Dr.  
Santa Fe, NM 87505

WELL API NO.

30-015-33968

5. Indicate Type of Lease

STATE ☐ FEE ☒

6. State Oil & Gas Lease No.

Month Year  
JUN 4 2007  
OCD - ARTESIA, NM

7. Lease Name or Unit Agreement Name

Esperanza "13" (302751 Property Code)

8. Well Number

2

9. OGRID Number

241333

10. Pool name or Wildcat

Carlsbad; Morrow, South (Pro Gas) 73960

SUNDRY NOTICES AND REPORTS ON WELLS

(DO NOT USE THIS FORM FOR PROPOSALS TO DRILL OR TO DEEPEN OR PLUG BACK TO A DIFFERENT RESERVOIR. USE "APPLICATION FOR PERMIT" (FORM C-101) FOR SUCH PROPOSALS.)

1. Type of Well: Oil Well ☐ Gas Well ☒ Other

2. Name of Operator

Chevron Midcontinent, L.P. (241333)

3. Address of Operator

15 Smith Road Midland, Texas 79705

4. Well Location

Unit Letter O : 621 feet from the South line and 2287 feet from the East line  
Section 13 Township 22-S Range 26-E NMPM County Eddy

11. Elevation (Show whether DR, RKB, RT, GR, etc.)

3,151' GR

Pit or Below-grade Tank Application ☐ or Closure ☐

Pit type Depth to Groundwater Distance from nearest fresh water well Distance from nearest surface water

Pit Liner Thickness: mil Below-Grade Tank: Volume Bbls; Construction Material

12. Check Appropriate Box to Indicate Nature of Notice, Report or Other Data

NOTICE OF INTENTION TO:

PERFORM REMEDIAL WORK ☐ PLUG AND ABANDON ☐

TEMPORARILY ABANDON ☐ CHANGE PLANS ☐

PULL OR ALTER CASING ☐ MULTIPLE COMPL ☐

OTHER: ☐

SUBSEQUENT REPORT OF:

REMEDIAL WORK ☐ ALTERING CASING ☐

COMMENCE DRILLING OPNS. ☐ P AND A ☐

CASING/CEMENT JOB ☐

OTHER: Requested Completion Report- Well Records ☒

13. Describe proposed or completed operations. (Clearly state all pertinent details, and give pertinent dates, including estimated date of starting any proposed work). SEE RULE 1103. For Multiple Completions: Attach wellbore diagram of proposed completion or recompletion.

Please see attached 5 Page Completion Progress Report (and other related NMOCD Forms and documents).

This very late filing of Completion Reports (along with associated C-102, C-104 & C-105 and associated documents) is now being submitted per NMOCD request to complete the records for this well and bring in into compliance. Oversight on filing of this report is due principally to Change of Operator and loss of pertinent personnel over the same interval as this well's completion work. Please accept our apologies for this oversight.

I hereby certify that the information above is true and complete to the best of my knowledge and belief. I further certify that any pit or below-grade tank has been/will be constructed or closed according to NMOCD guidelines ☐, a general permit ☐ or an (attached) alternative OCD-approved plan ☐.

SIGNATURE: Alan W. Bohling TITLE: Regulatory Agent DATE: 05/31/2007

Type or print name: Alan W. Bohling

E-mail address: ABohling@chevron.com .com

Telephone No. (432) 687-7158

**For State Use Only**

APPROVED BY: FOR RECORDS ONLY TITLE

DATE JUN 05 2007

Conditions of Approval (if any):

**ESPERANZA 13 # 2**  
**(API # 30-015-33968)**

**Type of Report: COMPLETION PROGRESS REPORT**

**Activity Date 5/23/2005**

ROAD UNIT TO LOCATION, CLEAN LOCATION, SET ANCHORS. MIRU UNIT, MOVE IN RACKS + TBG + REVERSE UNIT. SHUT DOWN. PREP TO N/U BOP + TIH W/ DRILLING TOOLS & PICK UP TBG.

**Activity Date 5/24/2005**

N/U BOP, TIH W/ BIT + DCS PICKING UP TBG TO 10,000 FT. CLOSE IN WELL, SHUTDOWN, PREP TO RESUME TIH + DRILL OUT

**Activity Date 5/25/2005**

TIH PICKING UP TBG, TAG AT 11,932 FT. RIG UP POWER SWIVEL, COULD NOT TURN TBG W/ 2.5 SWIVEL. HIGH TORQUE RIG DOWN 2.5, RIG UP 3.5 SWIVEL, TORQUE IS WORKABLE ROTATING DOWN, CLOSE IN WELL, SHUT DOWN. PREP TO DO & DISPLACE HOLE W/ 7% KCL.

**Activity Date 5/26/2005**

DRILL CEMENT FROM 11,932 TO 11,970 FT. DO LC + 30 FT OF CEMENT. CIRC HOLE CLEAN, TEST TO 2000 PSI FOR 15 MIN. CLOSE IN WELL, SHUT DOWN. PREP TO RESUME DRILLING

**Activity Date 5/27/2005**

DO CEMENT + F/C TO 12,047 FT. CIRC HOLE CLEAN, DISPLACE HOLE W/ 7% KCL. CLOSE IN WELL, SHUT DOWN. PREP TO TOH+ RIH W/WIRELINE SHUT DOWN FOR WEEKEND

**Activity Date 5/31/2005**

TOH W/TBG, LAY DOWN DRILL COLLARS. MIRU WIRELINE, RUN GR/CCL, CBL W/ 2000 PSI ON CASING. TOL @ 9086 FT, PBTD @ 12,050 FT. LOG SHOWED GOOD CEMENT BOND ON ALL OF LINER. CLOSE IN WELL, SHUT DOWN. PREP TO PERFORATE + TIH W/ PKR.

**Activity Date 6/1/2005**

PERFORATE LOWER MORROW W/ 1 JSPF. 11,872- 77, 11,914-26, 11,954, 67, 73, 75, 79 = 22 HOLES. RDMO WIRELINE. START IN HOLE W/ 4 1/2 X 2-3/8 BAKER PKR W/ 1.87SF PROFILE W/ ON+OFF TOOL. SHUT DOWN UNIT DOWN FOR REPAIRS

**Activity Date 6/2/2005**

REPAIR UNIT, TIH WI REMAINING TBG W/ PKR. SET PKR @ 11,741 FT. ND BOP, N/U TREE. TEST TO 2000 PSI FOR 15 MIN. CLOSE IN WELL, SHUT DOWN. PREP TO SWAB DOWN TBG

**Activity Date 6/3/2005**

TBG ON SLIGHT VAC. TAG FLUID AT 300 FT. MAKE SWAB RUNS RECOVERED 40 BBLS . WELL KICKED OFF, PRESSURE STEADY AT 200 ON 3/4 CHOKE. RECOVERED 45 BBLS W/ SLIGHT MIST ON LAST HR OF TEST. 3 MCF/DAY RATE. CLOSE IN WELL, SHUT DOWN . PREP TO ACIDIZE MONDAY AM.

**Activity Date 6/4/2005**

WELL SHUT IN FOR WEEKEND. PREP TO ACIDIZE LOWER MORROW PERFS 11.872 - 11.97922 HOLFS~

**Activity Date 6/6/2005**

SITP 3400 PSI. MIRU ACID CREW ACIDIZE LOWER MORROW PERFS 11,872 -11,979 22 HOLES W/ 1000 GAL 10% ACETIC ACID W/ 33 BALL SEALERS. BREAK AT 5770 PSI, MAX /RATE 4 BPM, AVG RATE 3 BPM, MAX/PRESSURE 7000 PSI AVG PRESSURE 3800 PSI. ISDP 2200 PSI, 5 MIN 1550 PSI, 10 MIN 1211 PSI, 15 MIN 976 PSI. BALLED OUT W/ 25 SEALERS ON FORMATION. LOAD TO RECOVER 70 BBLS. RDMO ACID CREW, OPEN WELL W/ 400 PSI ON TBG. BLEED DOWN TO ZERO PSI. TAG FLUID W/ SWAB @ SURFACE, MAKE 7 SWAB RUNS + KICK OFF WELL. RECOVERED 40 BBLS, PRESSURE BUILT UP TO 1500 PSI ON 20/64 CHOKE. START GAS THRU TEST UNIT AT 1400 PSI ON 24/64 CHOKE. PRESSURE DROPPED FROM 1400 PSI TO 30 PSI FROM 1:00 PM TO 8:00 PM. RECOVERED 12 BBLS OF FLUID. CLOSE IN WELL, SHUT DOWN FOR PRESSURE BUILD UP.

**ESPERANZA 13 # 2**  
**(API # 30-015-33968)**

**Type of Report: COMPLETION PROGRESS REPORT**  
**PAGE 2**

**Activity Date 6/7/2005**

SITP 2400 PSI. FLOW BACK ON 20/64 CHOKE, PRESSURE DOWN TO 50 PSI IN 4 HRS. RECOVERED 4 BLS OF FLUID. PRESSURE DOWN TO 30 PSI W/ SLIGHT MIST. COULD NOT SWAB, PRESSURE WOULD NOT SWAB PAST TREE. CLOSE IN WELL, SHUT DOWN. PREP TO TEST PKR + RUN SLICKLINE TO CHECK FOR FILL.

**Activity Date 6/8/2005**

SITP 2250 PSI, SICP 700 PSI. BLOW DOWN CASING TO ZERO. TEST CASING TO 2000 PSI FOR 30 MIN. FLOW BACK TBG TO 35-50 PSI W/ SLIGHT MIST. MIRU SLICKLINE UNIT, RUN GAUGE RING / JUNK BASKET TO PBTD 12,040 FT. DID NOT TAG UP UNTIL BTM. RUN GRADIENT BOMB TO PKR. SURFACE PRESSURE 3527, BH PRESSURE 1313 PSI. GAS GRADIENT .0561. FLUID TOP AT 2911 FT FROM SURFACE. FLUID GRADIENT .1248 (GAS CUT). RDMO SLICKLINE. CLOSE IN WELL, SHUT DOWN. PREP TO RELEASE & TOH W/ PKR, LAYING DOWN TBG.

**Activity Date 6/9/2005**

SITP 2400 PSI, SICP 900 PSI BLOW DOWN TBG + CSG LOAD TBG W/ 40 BBLS, ND TREE, NU BOP. RELEASE + START OUT OF HOLE W/ PKR, LAYING DOWN TBG. CLOSE IN WELL, SHUT DOWN. PREP TO RESUME TRIP OUT OF HOLE.

**Activity Date 6/10/2005**

TBG 0 PSI, SLIGHT VAC ON CASING. TRIP OUT OF HOLE LAYING DOWN REMAINING TBG + PKR. ND BOP, NU FRAC VALVES. CLOSE IN WELL, RDMO UNIT. PREP TO RUN COIL TBG + BLOW DOWN CASING.

**Activity Date 6/11/2005**

SICP 100 PSI. MIRU COIL TBG UNIT, RIH TO 12,040 FT W/ N2. PULL UP TO 10,500 FT, BLOW CASING DOWN PULLING OUT OF HOLE. BLOW OFF N2, GAS BLOW AT 100 PSI ON 32/64 CHOKE. CLOSE IN WELL, RDMO COIL TBG UNIT. SHUT DOWN. PREP TO FRAC.

**Activity Date 6/12/2005**

WELL SHUT IN, PREP TO FRAC

**Activity Date 6/24/2005**

MIRU FRAC + WIRELINE EQUIPMENT, FRAC LOWER MORROW PERFS = 11,872'-11,979' = 22 HOLES W/ 70Q FOAM FRAC. PUMP 584 BBLS GELLED 7% KCL, 146.2 TONS CO2, 47,583 # CRC PROP. MAX/PRESSURE = 6211 PSI, AVG/PRESSURE = 4828 PSI. MAX RATE = 46.6 BPM, AVG RATE = 34.5 BPM. ISIP = 3052, 5 MIN = 3048, 10 MIN = 3043, 15 MIN = 3040 PSI. CLOSE IN WELL. RIH W/ GAUGE RING & JUNK BASKET TO 11,870 FT. SET 10K FLOW THRU COMPOSITE PLUG AT 11,870 FT. PERFORATE MIDDLE MORROW PERFS / 1 JSPF 11,686-90, 11,710-15, 11,773-82, 11,790-92 TOTAL 18 HOLES. CLOSE IN WELL SHUT DOWN. PREP TO FRAC.

**Activity Date 6/25/2005**

FRAC MIDDLE MORROW PERFS = 11,686'-11,792' W/ 548 BBLS GELLED FLUID, 148.4 TONS CO2, 49,513 # 20/40 CRC PROP. MAX PRESSURE = 6895 PSI, AVG PRESSURE = 5660 PSI. MAX RATE = 40.6 BPM AVG/RATE = 34.1 BPM. ISIP = 4835 PSI, 5 MIN = 3617 PSI, 10 MIN = 3436 PSI, 15 MIN = 3387 PSI. CLOSE IN WELL. RIH W/ GAUGE RING & JUNK BASKET TO 11,670 FT. SET 4-1/2 FLOW THRU COMPOSITE PLUG AT 11,670 FT. PERFORATE UPPER MORROW 11,456-60, 11,514-17, 11,623-26, 11,628-30, 11,647-50. FRAC UPPER MORROW W/ 416 BBLS GELLED FLUID, 112.8 TONS CO2, 24,427 # 20/40 CRC PROP. SIP = 4267 PSI, 5 MIN = 2953 PSI, 10 MIN = 2803 PSI, 15 MIN = 2772 PSI. CLOSE IN WELL SHUT DOWN. RDMO FRAC + WIRELINE EQUIPMENT. START FLOWIN BACK AT 5:30 PM. W/ 3000 PSI ON CASING ON 14/64 CHOKE. RECOVERED CO2 + 200 BBLS OF FRAC FLUID AT 6:00 AM PRESSURE AT 800 PSI ON 18/64 CHOKE. TOTAL FLUID TO RECOVER FROM THREE STAGE FRAC = 1548 BBLS, TOTAL CO2 = 407 TONS.

**Activity Date 6/26/2005**

6:00 AM PRESSURE AT 800 PSI ON 18/64 CHOKE, STEADY AT 800 PSI TO 3:00 PM. W/ 3 BPH. PRESSURE BUILT UP TO 1400 PSI ON 18/64 CHOKE AT 6:00 PM, STEADY AT 1400 PSI UNTIL 6:00 AM. CO2 AT 20-25%, 2 BPH FLUID. RECOVERED TRACE OF SAND DURING FLOW TEST, RECOVERED 250 BBLS OF FLUID DURING TEST. PREP TO MOE IN COIL TBG UNIT + START CLEAN OUT.

**ESPERANZA 13 # 2**  
**(API # 30-015-33968)**

**Type of Report: COMPLETION PROGRESS REPORT**  
**PAGE 3**

**Activity Date 6/27/2005**

6:00AM TO 8:00AM PRESSURE AT 1400 PSI 18/64 CHOKE 2BBL PER HOUR FLUID. MIRU COIL TBG RIH W/ MILL AND DRILLING MOTOR CLEAN OUT SAND AND DRILL OUT COMPOSITE PLUG @ 11,670' PUSH BOTTOM OF COMPOSITE PLUG TO 11,800' COULD NOT DRILL OUT PLUG POH W/ MOTOR AND MILL FOUND MILL WORE SMOOTH RIH W/ MOTOR AND MILL #2 DRILL OUT BOTTOM OF 1ST PLUG DRILL OUT PLUG @11,850' CLEAN OUT TO PBTD ~ 12,030'.

**Activity Date 6/28/2005**

CIRC HOLE CLEAN, TOH W/COIL TBG + MOTOR + MILL RDMO COIL TBG UNIT. MIRU WORKOVER UNIT + WIRELINE. RIH W/GAUGE RING & JUNK BASKET. TAG UP AT 9018 FT, COULD NOT WORK DOWN HOLE. POH W/ WIRELINE. FOUND SAND IN TOOL TRAP. RIH W/ 3-1/8 SINKER BAR, TAG AT 9018 FT WORK DOWN TO 9048 FT. PULL WIRLINE. RDMO WIRELINE TRUCK. SICP 1800 PSI. START FLOW BACK ON 18/64 CHOKE. PRESSURE DROPPED TO 800 PSI ON 20/64 CHOKE + RAN STEADY AT 650 TO 700 PSI OVERNIGHT. RECOVERED CO2 + 4 TO 5 BPH, 6:00 AM 650PSI 20/64 CHOKE 4 BBL W/ TRACE OF SAND.

**Activity Date 6/29/2005**

6:00 TO 7:00 AM 650 PSI ON 20/64 CHOKE @ 4 BBL FRAC FLUID. OPEN WELL UP TO 32/64 CHOKE 7:00 AM TO 8:00 AM PRESSURE BUILT UP TO 1150 PSI, UNLOADING @ 20 BLS OF FRAC FLUID. PRESSURE STEADY AT 1100 PSI FROM 8:00 AM TO 2:00PM, ON 32/64 CHOKE. DROPPING TO 850 PSI FROM 2:00 PM TO 4:00PM. PRESSURE BUILT BACK UP 1100 PSI FROM 4:00 PM TO 6:00PM. STEADY AT 1000 PSI ON 32/64 CHOKE FROM 6:00 PM TO 6:00AM. UNLOADING 10 TO 15 BBL FRAC FLUID W/ STEADY SAND SHOW. CO2 AT 20%. RECOVER @ 250 BBL OF FRAC FLUID DURING DAYS TEST. EST FLOW AT 6330.4 MCF/DAY.

**Activity Date 6/30/2005**

PRESSURE AT 6:00 AM TO 1:00PM 1000 PSI ON 32/64 CHOKE. RECOVERED @5 BBL OF FRAC FLUID PER HR W/TRACE OF SAND. PRESSURE DROPPED TO 950 PSI FROM 1:00 PM TO 4:00 PM, @ 5 BBL PER HR W/ NO SAND IN FRAC FLUID. CLOSE IN WELL, SHUT DOWN. PREP TO RUN WIRELINE GAUGE + JUNK BASKET.

**Activity Date 7/1/2005**

SITP 2650 PSI. MIRU WIRELINE, RIH WI GAUGE RING / JUNK BASKET TO 11,350 FT. SET 10K BAKER PKR W/ 1.875 F - PKR - TBG SUB 1.81 . BLANKING PLUG IN 1.87SF. ND FRAC VALVES, NU BOP. PRESSURE AT 0 PSI. CLOSE IN WELL, SHUT DOWN . PREP TO PICK UP 2-7/8 PROD TBG.

**Activity Date 7/5/2005**

SICP 0 PSI. TIH W/ ON+QFF TOOL, PICKING UP 2-7/8 PROD TBG. TAG PKR AT 11,350 FT. CLOSE IN WELL, SHUT DOWN. PREP TO PUMP PKR FLUID + TREE UP WELL

**Activity Date 7/6/2005**

DISPLACE HOLE W/ 7% KCL + PKR FLUID. LATCH ON PKR AT 11,350, ND BOP. NU TREE + TEST TO 2000 PSI FOR 15 MIN. SWAB DOWN TBG TO 7500 FT, MIRU SLICKLINE. PULL PRONG, PRESSURE BUILT UP 2800 PSI. RIH TO CATCH PLUG, COULD NOT GET GOOD LATCH UP. PULL TOOL, FOUND SAND IN TOOL. START FLOW BACK TO CLEAN OUT SAND AT 2800 PSI, PRESSURE DROPPED TO 300 PSI ON 32/64 CHOKE. STAYING STEADY AT 250/300 PSI OVERNIGHT, RECOVER 2 TO 4 BBL PER HR. CLOSE IN WELL AT 5:00 AM TO BUILD PRESSURE. PREP TO FISH BLANKING PLUG.

**Activity Date 7/1/2005**

SITP 1800 PSI. MIRU SLICKLINE, RIH W/ CATCH TOOL, COULD NOT LATCH ONTO BLANKING PLUG, PULL OUT W/ TOOL, FOUND TOOL PACKED W/ SAND. RDMO SLICKLINE. MIRU SWAB UNIT, TAG AT 9800 FT, COULD NOT WORK PAST 9800 FT. PULL SWAB, RECOVERED NO FLUID, CUPS FULL OF SAND. RDMO SWAB UNIT. CLOSE IN WELL, SHUT DOWN, PREP TO CLEAN OUT W/ COIL TBG

**Activity Date 7/11/2005**

SITP 3100 PSI, OPEN ON 3/4 CHOKE. PRESSURE DROPPED BELOW 100 PSI, NO FLUID TO SURFACE. CLOSE IN WELL, SHUT DOWN. PREP TO RUN COIL TBG WED AM TO CLEAN OF PLUG.

**ESPERANZA 13 # 2**  
**(API # 30-015-33968)**

**Type of Report: COMPLETION PROGRESS REPORT**  
**PAGE 4**

**Activity Date 7/17/2005**

PREP TO MOVE IN COIL TBG UNIT TO WASH OFF, PULL BLANKING PLUG OUT OF PKR.

**Activity Date 7/18/2005**

MIRU COIL TBG RIH W/ CATCH TOOL PULL OUT FOUND CATCH TOOL PLUGGED RIH W/ CATCH TOOL #2 PULL 5000 OVER PULL OUT FOUND PIECE OF COMPOSITE PLUG IN CATCHER PREP TO RUN CATCH TOOL.

**Activity Date 7/19/2005**

RIH W/ RUN #3 W/ CATCH TOOL. WASHED OFF TOP OF PLUG, WORK ON PLUG. PULLED @ 5000# OVER PULL. PULL OUT OF HOLE, DID NOT RECOVER PLUG. TOOL SHOWED MARKS INSIDE ON DOGS. RDMO COIL TBG UNIT. CLOSE IN WELL. SHUT DOWN. PREP TO CUT TAIL PIPE.

**Activity Date 7/21/2005**

MIRU WIRELINE, SITP 2100 PSI. RUN IN HOLE W/ ONE 11/16 CUTTER TAG AT 11,250 FT. COULD NOT WORK PAST TAG. RDMO WIRELINE. MIRU SLICKLINE, MAKE 2 RUNS W/ BAILER. DID NOT RECOVER ANY FILL, DID NOT SHOW ANY MARKS ON TOOL. RDMO SLICKLINE, CLOSE IN WELL, SHUT DOWN. PREP TO SHOT CIR HOLES+ TOH W/ PKR.

**Activity Date 7/25/2005**

SITP 1500 PSI. MIRU UNIT, BLOW DOWN TBG + LOAD W/ 7% KCL. MIRU WIRELINE, SHOTS CIRC HOLES IN TBG AT 11,250 FT. ND TREE, NU BOP. RELEASE + TOH W/ PKR. FOUND PKR + 2 JTS OF TBG PLUGGED W/ SAND. CLOSE IN WELL, SHUT DOWN. PREP TO RUN GAUGE RING / JUNK BASKET TO CHECK FOR FILL.

**Activity Date 7/26/2005**

SICP 0 PSI. MIRU WIRELINE, RUN IN HOLE W/ GAUGE RING & JUNK BASKET. TAG AT 11,595 FT, 7 PERFS UNCOVERED, REMAINING PERFS COVERED W/ SAND. RDMO WIRELINE. TIH W/ NOTCHED COLLAR + 3000 FT 2-3/8 N-80 TBG, START IN HOLE W/ 2-7/8 TBG. CLOSE IN WELL. SHUT DOWN. PREP TO CLEAN OUT W/ FOAM UNIT.

**Activity Date 7/27/2005**

SICP 0 PSI. TIH W/ REMAINING TBG TO LINER TOP. MIRU FOAM AIR UNIT. BLOW 7" CASING DRY. CLOSE IN WELL, SHUT DOWN. PREP TO START CLEANING OUT 4-1/2 LINER

**Activity Date 7/28/2006**

SICP 0 PSI. TIH W/ TBG, TAG AT 11,590 FT. CLEAN OUT W/ FOAM AIR TO PBTD AT 12,000 FT. CIRC HOLE CLEAN. PULL OUT OF HOLE TO LINER TOP. PRESSURE BUILT UP TO 1000 PSI, FLOW DOWN TO 500 PSI ON 3/8 CHOKE. FLOW BACK WELL OVERNIGHT TO CLEAR FOAM. PRESSURE STEADY AT 500 PSI. PREP TO BLOW DOWN + TOH

**Activity Date 7/29/2005**

SICP 2200 PSI. OPEN ON 12/64 CHOKE, CO2 10%. FLOW BACK WELL TO 7:00 PM. PRESSURE AT 1600 PSI. CO2 DOWN TO 1/2% PULLED TWO TUBES FOR RECORD. START DOWN SALES LINE AT 7:00 PM. 1600 PSI, 13/64 CHOKE @ 2042.7 MCF/DAY. 1:00AM TO 6:00 AM PRESSURE STEADY AT 1000 PSI ON 24/64 CHOKE. RECOVER 30 BBLS OF FLUID. © 1790.5 AVG IN 10 HR SALES. @ 1878.2 MCF/DAY AT REPORT TIME

**Activity Date 7/30/2005**

PRESSURE AT 1000 PSI ON 23/64 CHOKE FROM 6:00 TO 2:00 PM, DROPPED TO 950 PSI ON 23/64 CHOKE FROM 2:00 PM TO 9:00 PM DROPPED TO 925 PSI ON 23/64 CHOKE FROM 9:00 PM TO 6:00 AM. RECOVERED 118 BBLS OF FLUID IN 24 HRS. EST GAS AVG FOR 24 HRS = 1955.9 MCF/DAY

**Activity Date 7/31/2005**

PRESSURE AT 6:00 AM 925 PSI TO 3:00 PM. DROPPED TO 900 PSI FROM 3:00 PM TO 5:00 PM. PRESSURE STEADY AT 1000 PSI FROM 5:00PM TO 6:00 AM. RECOVERED 67 BBLS OF FLUID. @ 239 BBLS RECOVERED OVER WEEKEND

**ESPERANZA 13 # 2**

**(API # 30-015-33968)**

**Type of Report: COMPLETION PROGRESS REPORT**

**PAGE 5**

**Activity Date 8/1/2005**

6AM 1000PSI 19/64 CHOKE OPEN ON 24/64 CHOKE PRESSURE DRIPPED TO 800 PSI BY 7PM STEADY @ 800 PSI TO 6AM RECOVERED 140 BBLS OF FLUID CO2 @ 1% SALES AVERAGE 2,013 MCF/DAY.

**Activity Date 8/2/2005**

6:00 AM PRESSURE AT 800 PSI ON 24/64 CHOKE. DROPPED TO 775 PSI AT 8:00 AM, STEADY AT 775 PSI TO 9:00 PM. DOWN TO 750 PSI FROM 9:00 PM TO 6:00 AM. CO2 1%, RECOVERED 157 BBLS OF FLUID, EST SALES 1836.6 AVG MCF/DAY.

**Activity Date 8/3/2005**

6:00 AM PRESSURE AT 650 PSI ON 24/64 CHOKE. SHUT IN WELL AT 8:30 AM W/ 650 PSI. TURN GAS TO FLAIR, DROP PRESSURE TO 500 PSI. MIRU PUMP TRUCK. KILL TBG W/ 7% KC W/ CLAY STAY. TOH W/ TBG. CLOSE IN WELL, SHUT DOWN, PREP TO RUN PKR ON WIRELINE W/ PUMP OUT DISC.

**Activity Date 8/4/2005**

SICP 1500 PSI. MIRU WIRELINE, RIH W/ GAUGE RING+JUNK BASKET TO 12,000 FT. RIH ÷ SET 10K BAKER WIRELINE SET HORNETT PKR W/ 1.875 F + 8 FT 2-3/8 SUB + 1.81 R W WIRELINE ENTRY GUIDE AT 11,350 FT. BLOW DOWN CASING. RDMO WIRELINE. RIH + LAY DOWN 2 3/8 WORK STRING. CLOSE IN WELL, SHUT DOWN. 0 PSI ON CASING. PREP TO RIH W/ PROD TBG.

**Activity Date 8/5/2005**

TIH W/ ON-OFF TOOL, + 102 JTS 2-7/8 L-80 TBG W/ TURN DOWN COLLARS +245 JTS 2-7/8 L-80 TBG W/ REG COLLARS + 4 FT SB + I JT 27/8 L-80 TBG . DISPLACE HOLE W/ 7% KCL + PKR FLUID. LATCH ON TO PKR AT 11,350 FT. TEST BACKSIDE TO 1000 PSI FOR 15 MIN. PUMP OUT PLUG AT 1550 PSI. TBG ON VAC. CLOSE IN WELL TO BUILD UP PRESSURE. SHUT DOWN.

**Activity Date 8/6/2005**

SITP 1400 PSI, FLOW BACK TO PIT FROM 7:00 AM TO 3:00 PM. FLUID RETURNS TOO STRONG TO RUN THRU UNIT. STARTED THRU UNIT AT 3:00 PM PRESSURE AT 1150 PSI ON 20/64 CHOKE. STARTED GAS THRU SALES LINE AT 3:00 PM. PRESSURE 1200-1100 PSI AVG GAS AT 1.5 MCF/DAY

**Activity Date 8/7/2005**

CONT FLOW WELL, FTP 650 PSI ON 19/64" CHOKE, 1.1 MMCFID FLOW RATE, RECOVERED 124 BW OVERNIGHT IN 22 HOURS.

**Activity Date 8/8/2005**

PRESSURE AT 6:00 AM 900 PSI THRU 12:00 PM. CLOSE IN TO N/U TO TOP OF TREE. PRESSURE BUILT UP TO 1150 PSI IN 4 MIN. 12:00 PM TO 6:00 AM 1000 PSI ON 20/64 CHOKE @ 1,425 AVG MCF/DAY. RECOVERED 171 BBLS OF FLUID, FLUID RECOVERED KCL. 0 SAND IN RETURNS.

**Activity Date 8/9/2005**

PRESSURE FROM 900/950 PSI FROM 6:00 AM TO 4:00 PM. BACK UP TO 1000 PSI FROM 4:00 PM TO 6:00 AM. AVG MCF AT 1.412. RECOVERED 151 BBLS OF FLUID @665 BBLS RECOVERED TO DATE. 0 SAND IN RETURNS.

**Activity Date 8/10/2005**

PRESSURE STEADY @ 1000 PSI. RECOVERED 139 BBLS AVG. MCF 1,445.0 PER DAY

**Activity Date 8/11/2005**

PRESSURE STEADY @ 1000 PSI. RECOVERED 126 BBLS. AVG. MCF 1,438.50 PER DAY

**Activity Date 8/24/2005**

MONDAY 8/22/05. RUN PROD LOGS, CREW DID NOT LEAVE REPORT ON DATA.

6/5/2007

## Wellbore Diagram

r263

30-015-33968-00-00

ESPERANZA 13 No. 002

Company Name: CHEVRON MIDCONTINENT, L.P.

Location: Sec: 13 T: 22S R: 26E Spot:

Lat: 32.3868405165098 Long: -104.245054600306

Property Name: ESPERANZA 13

County Name: Eddy

## String Information

## Cement Information

## Perforation Information

Top (ft sub)	Bottom (ft sub)	Shts/Ft	No Shts	Dt Sqz
0	0			

## Formation Information

St Code	Formation	Depth
Pdel	Delaware	1880
Pbs	Bone Spring	5286
Pbs3sd	3rd Bone Spring Sand	8593
Pwc	Wolfcamp	8910
PPst	Strawn	10458
Ppat	Atoka	10810
Ppmor	Morrow	11190
Ppmorc	Morrow Clastics	11444

Hole: Unknown

TD:

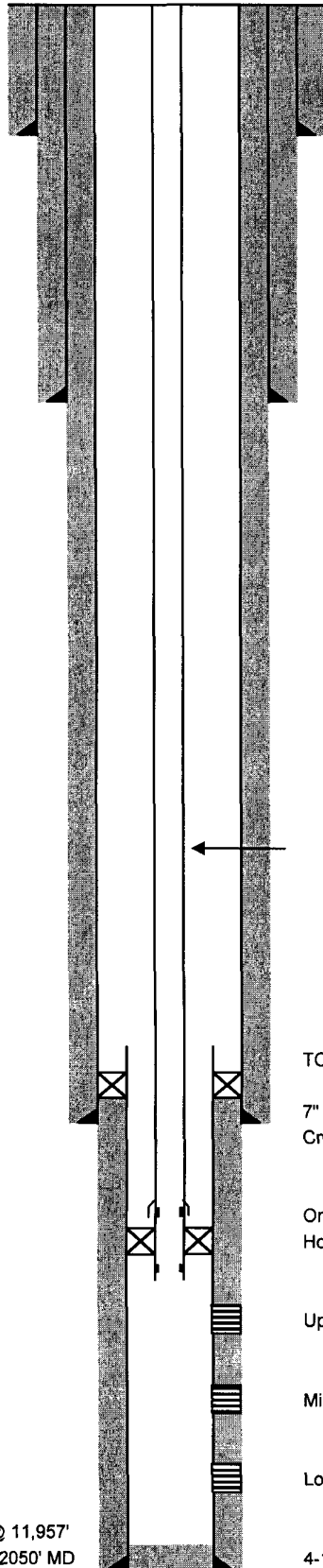
TVD: 0

PBTD:

**WELL: Esperanza 13 #2**  
**FIELD: Carlsbad South (Morrow)**



A Unocal Company



11" 5000 x 7 1/16" 10000

13-3/8" 48# H-40 STC @ 455'  
 Cmtd w/ 475 sx.  
 Circ cmt.

9-5/8" 36# J-55 LTC @ 1940'  
 Cmtd w/ 750 sx.  
 Circ cmt.

Kickoff point 3000'  
 Max angle 20°  
 Back to vertical (<2°) @ 10700'  
 Vertical section 1929' @ 51.48° azimuth

2 7/8" 6.5# L-80 EUE 8rd  
 Turned down collars in liner

TOL 9065' ZXP lnr hngr pkr and 10' TB sleeve. TOL tstd to 15.3 ppg equiv.  
 (= 3200 psi w/ 8.6 KCl wtr)

7" 26# P110 BTC @ 9270' ( 9042 TVD)  
 Cmtd w/ 1200 sx. Circ cmt.

On/off tool w/ 1.87" F nipple  
 Hornet pkr @ 11350 , 8' sub, 1.81" F nipple, WLEG

Upper Morrow perms 11456-60, 11514-17, 11623-26, 11628-30, 11647-50 (15 holes)  
 Frac w/ 40000 gal 70 Q foam and 40000 # 20-40 dual resin coat ottawa sd

Middle Morrow 11686-90, 11710-13, 11773-82, 11790-92 (18 holes)  
 Frac w/ 40000 gal 70 Q foam and 40000# 20-40 dual resin coat ottawa sd

Lower Morrow 11872-77, 11914-26, 11954, 67, 73, 75, 79 ( 22 holes )  
 Frac w/ 40000 gal 70 Q foam and 40,000# 20-40 dual resin coat ottawa sd

4-1/2" 13.5# P-110 LTC @ 12050'  
 Cmtd to TOL w/ 230 sx. Displaced with 10 ppg BW.

API # 30-015-33968  
 Surf Loc: 621' FSL 2287' FEL Sec 13 T22S R26E  
 BHL: 1196' north and 1513' east of surf loc.  
 1817' FSL & 773 FEL Sec 13  
 Eddy Co., New Mexico  
 Elev: GL 3151', KB 3176' (RKB 25')  
 Spud: 4/2/05 RR: 5/13/05  
 First Sales:  
 AFE # 1050185

LC @ 11,957'  
 TD 12050' MD  
 11,798' TVD