

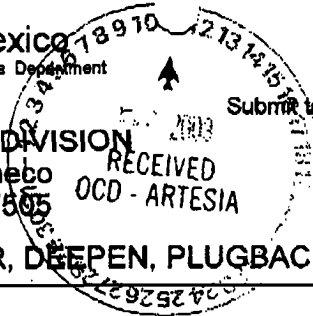
Op

District I
PO Box 1990, Hobbs, NM 88241-1990
District II
911 South First, Artesia, NM 88210
District III
1000 Rio Brazos Rd., Aztec, NM 87410
District IV
2040 South Pacheco, Santa Fe, NM 87505

State of New Mexico
Energy, Minerals & Natural Resources Department

OIL CONSERVATION DIVISION
2040 South Pacheco
Santa Fe, NM 87505

Form C-101
Revised October 18, 1994
Instructions on back
Submit to Appropriate District Office
State Lease - 6 Copies
Fee Lease - 5 Copies



AMENDED REPORT

APPLICATION FOR PERMIT TO DRILL, RE-ENTER, DEEPEN, PLUGBACK, OR ADD A ZONE

Operator Name and Address Nearburg Producing Company 3300 N A St., Bldg 2, Suite 120 Midland, TX 79705		OGRID Number 015742
		API Number 30-015-32639
Property Code 13595	Property Name Big Walt 2 State	Well No. 7

Surface Location

UL or lot no.	Section	Township	Range	Lot Idn	Feet from the	North/South line	Feet from the	East/West Line	County
M	2	22S	24E		825	South	850	West	Eddy

Proposed Bottom Hole Location If Different From Surface

UL or lot no.	Section	Township	Range	Lot Idn	Feet from the	North/South line	County
Proposed Pool 1 Indian Basin; Upper Penn, Associated (33685)							

NOTIFY OCD SPUD & TIME TO WITNESS 9 5/8" CASING

Work Type Code N	Well Type Code O	Cable/Rotary R	Lease Type Code S	Ground Level Elevation 3954
Multiple No	Proposed Depth 8600	Formation Cisco Canyon	Contractor Patterson	Spud Date 03-01-2003

Proposed Casing and Cement Program

Hole Size	Casing Size	Casing weight/foot	Setting Depth	Sacks of Cement	Estimated TOC
14-3/4"	9-5/8"	36#	1600'	800	Circ Surface
8-3/4"	7"	23# & 26#	8600'	1000	Circ 11

Describe the proposed program. If this application is to DEEPEN or PLUG BACK give the data on the present productive zone and proposed new productive zone. Describe the blowout prevention program, if any. Use additional sheet if necessary.

Propose to drill the well to a sufficient depth to evaluate the Cisco Canyon formation. After reaching TD, logs will be run and casing set if the evaluation is positive. Perforate, test and stimulation as necessary to establish production.

Acresage dedication is 320 acres; W/2 of Section 2.

Fresh water mud for 14 3/4" Hole

I hereby certify that the information given above is true and complete to the best of my knowledge and belief.

Signature: *Sarah Jordan*
Printed name: Sarah Jordan
Title: Production Analyst
Date: 2.10.03
Phone: 915/686-8235 ext 203

OIL CONSERVATION DIVISION
Approved By: *[Signature]*
Title: *District Supervisor*
Approval Date: FEB 13 2003
Expiration Date: FEB 13 2004
Conditions of Approval: Attached:

DISTRICT I
P.O. Box 1990, Hobbs, NM 88241-1990

State of New Mexico
Energy, Minerals and Natural Resources Department

Form C-102
Revised February 10, 1994
Submit to Appropriate District Office
State Lease - 4 Copies
Fee Lease - 3 Copies

DISTRICT II
P.O. Drawer 80, Artesia, NM 88211-0710

OIL CONSERVATION DIVISION
P.O. Box 2088
Santa Fe, New Mexico 87504-2088

DISTRICT III
1000 Rio Brancos Rd., Antec, NM 87410

DISTRICT IV
P.O. Box 2088, SANTA FE, N.M. 87504-2088

WELL LOCATION AND ACREAGE DEDICATION PLAT AMENDED REPORT

API Number	Pool Code 33685	Pool Name INDIAN BASIN: UPPER PENN. ASSOCIATED
Property Code	Property Name BIG WALT 2 STATE	Well Number 7
OGRD No. 015742	Operator Name NEARBURG PRODUCING COMPANY	Elevation 3954'

Surface Location

UL or lot No.	Section	Township	Range	Lot Idn	Feet from the	North/South line	Feet from the	East/West line	County
M	2	22-S	24-E		825	SOUTH	850	WEST	EDDY

Bottom Hole Location If Different From Surface

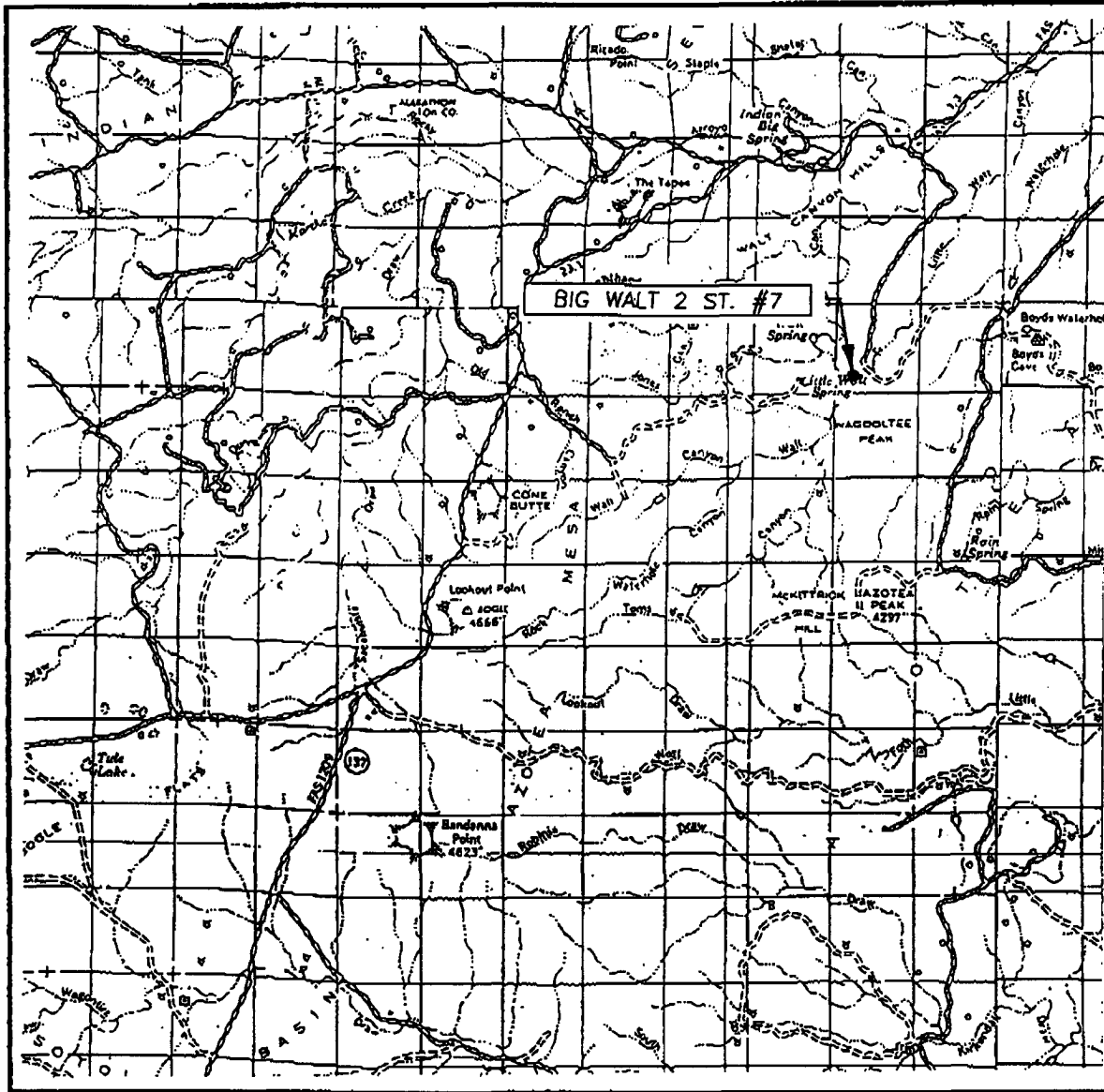
UL or lot No.	Section	Township	Range	Lot Idn	Feet from the	North/South line	Feet from the	East/West line	County

Dedicated Acres 320	Joint or Infill J	Consolidation Code	Order No.
------------------------	----------------------	--------------------	-----------

NO ALLOWABLE WILL BE ASSIGNED TO THIS COMPLETION UNTIL ALL INTERESTS HAVE BEEN CONSOLIDATED OR A NON-STANDARD UNIT HAS BEEN APPROVED BY THE DIVISION

3	2	1	<p>OPERATOR CERTIFICATION</p> <p>I hereby certify that the information contained herein is true and complete to the best of my knowledge and belief.</p> <p><i>S. Jordan</i> Signature Sarah Jordan Printed Name Production Analyst Title 2.10.03 Date</p> <p>SURVEYOR CERTIFICATION</p> <p>I hereby certify that the well location shown on this plat was plotted from field notes of actual surveys made by me or under my supervision and that the same is true and correct to the best of my belief.</p> <p>JANUARY 27, 2003</p> <p>Date Surveyed _____ L.A. Signature of Seal EIDSON Professional Surveyor RONALD G. EIDSON 3/29/03 03.11.0129</p> <p>Certificate No. RONALD G. EIDSON 3239 NEW MEXICO PROFESSIONAL SURVEYOR 12041</p>
52.56 AC.	52.46 AC.	52.38 AC.	

VICINITY MAP

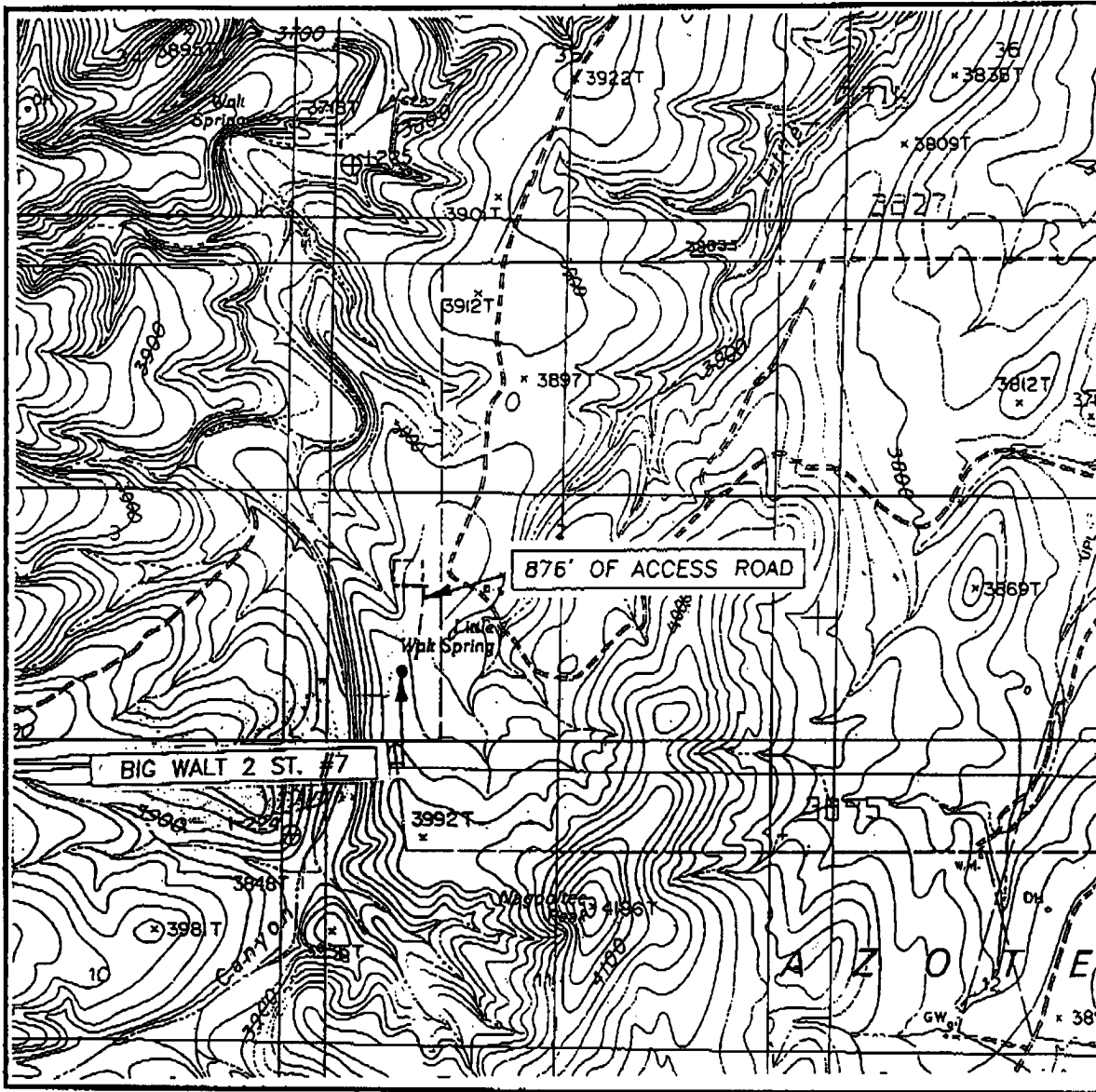


SCALE: 1" = 2 MILES

SEC. 2 TWP. 22-S RGE. 24-E
 SURVEY N.M.P.M.
 COUNTY EDDY
 DESCRIPTION 825' FSL & 850' FWL
 ELEVATION 3954'
 OPERATOR NEARBURG PRODUCING COMPANY
 LEASE BIG WALT 2 ST.

JOHN WEST SURVEYING
HOBBS, NEW MEXICO
(505) 393-3117

LOCATION VERIFICATION MAP



SCALE: 1" = 2000'

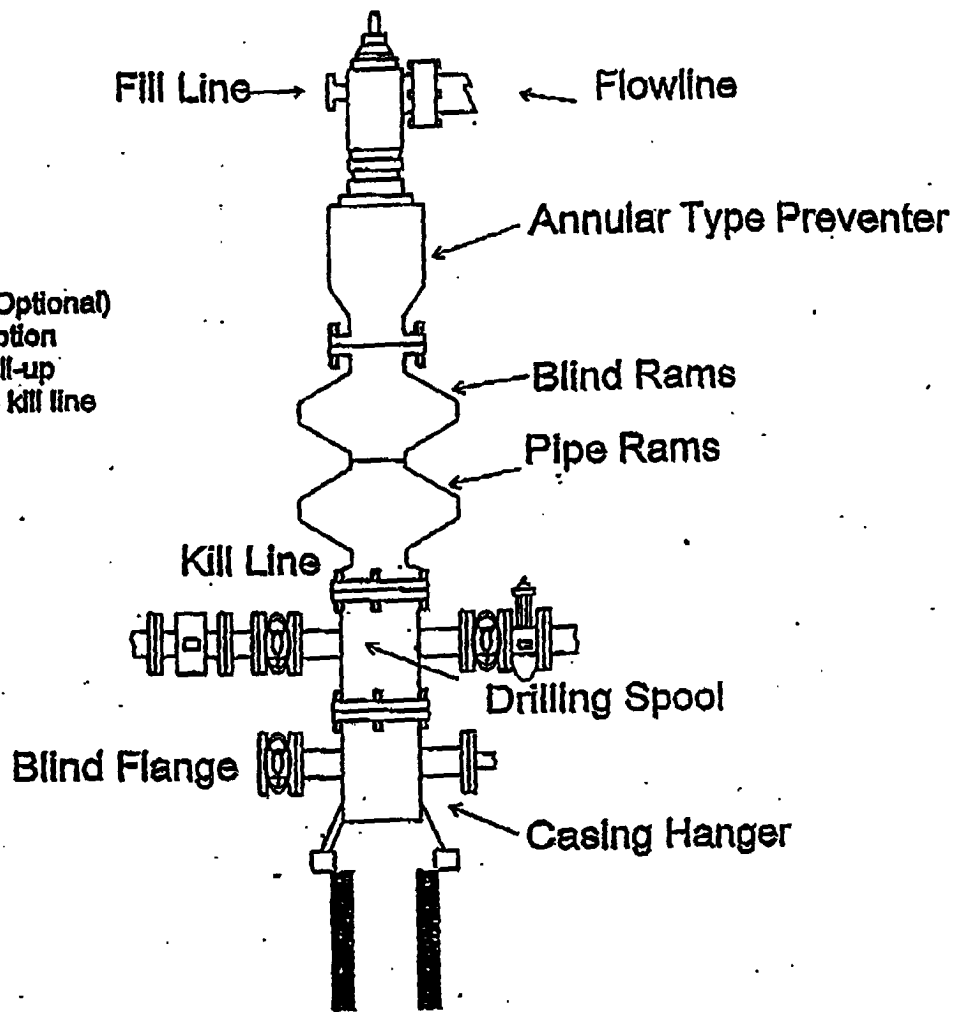
CONTOUR INTERVAL: 20'
AZOTEA PEAK, N.M.

SEC. 2 TWP. 22-S RGE. 24-E
 SURVEY N.M.P.M.
 COUNTY EDDY
 DESCRIPTION 825' FSL & 850' FWL
 ELEVATION 3954'
 OPERATOR NEARBURG PRODUCING COMPANY
 LEASE BIG WALT 2 ST.
 U.S.G.S. TOPOGRAPHIC MAP
 AZOTEA PEAK, N.M.

JOHN WEST SURVEYING
HOBBS, NEW MEXICO
(505) 393-3117

BUPE SCHEMATIC

Rotating Head (Optional)
Drilling Nipple option
must include a fill-up
line. Do not use kill line
for fill up.



1500 Series