



OCD-ARTESIA

ATS-07-589
EA-07-1137Form 3160-3
(April 2004)SEP 06 2007
OCD-ARTESIAFORM APPROVED
OMB No. 1004-0137
Expires March 31 2007UNITED STATES
DEPARTMENT OF THE INTERIOR
BUREAU OF LAND MANAGEMENT

APPLICATION FOR PERMIT TO DRILL OR REENTER

1a Type of work- <input checked="" type="checkbox"/> DRILL <input type="checkbox"/> REENTER		5 Lease Serial No NM-074935
1b Type of Well <input checked="" type="checkbox"/> Oil Well <input type="checkbox"/> Gas Well <input type="checkbox"/> Other <input type="checkbox"/> Single Zone <input type="checkbox"/> Multiple Zone		6 If Indian, Allottee or Tribe Name
2 Name of Operator COG Operating LLC 229137		7 If Unit or CA Agreement, Name and No
3a Address 550 W. Texas, Suite 1300 Midland, TX 79701		8, Lease Name and Well No Electra Federal #19 302483
3b Phone No (include area code) (505)685-4372		9 API Well No. 30-015-35781
4 Location of Well (Report location clearly and in accordance with any State requirements*) At surface 2300 FNL & 1675 FWL At proposed prod zone Roswell Controlled Water Basin		10 Field and Pool, or Exploratory Loco Hills; Glorietta Yeso
14 Distance in miles and direction from nearest town or post office* 2 miles north of Loco Hills, NM		11 Sec., T R. M. or Blk. and Survey or Area Sec 15 T17S R30E
15 Distance from proposed* location to nearest property or lease line, ft (Also to nearest drilg unit line, if any) 330	16 No. of acres in lease 640	17 Spacing Unit dedicated to this well 40
18 Distance from proposed* location to nearest well, drilling, completed, applied for, on this lease, ft 660	19 Proposed Depth 6100	20. BLM/BIA Bond No. on file NMB000215
21 Elevations (Show whether DF, KDB, RT, GL, etc.) 3700' GR	22 Approximate date work will start* 8/18/07	23 Estimated duration 10 days

24. Attachments

The following, completed in accordance with the requirements of Onshore Oil and Gas Order No. 1, shall be attached to this form

- | | |
|---|--|
| 1 Well plat certified by a registered surveyor | 4 Bond to cover the operations unless covered by an existing bond on file (see Item 20 above), |
| 2 A Drilling Plan | 5 Operator certification |
| 3 A Surface Use Plan (if the location is on National Forest System Lands, the SUPO shall be filed with the appropriate Forest Service Office) | 6 Such other site specific information and/or plans as may be required by the authorized officer |

25 Signature <i>Jerry W. Sherrell</i>	Name (Printed/Typed) Jerry W. Sherrell	Date 7/18/07
Title Production Clerk		
Approved by (Signature) /s/ James Stovall	Name (Printed/Typed) /s/ James Stovall	Date SEP 05 2007
Title FIELD MANAGER	Office CARLSBAD FIELD OFFICE	

Application approval does not warrant or certify that the applicant holds legal or equitable title to those rights in the subject lease which would entitle the applicant to conduct operations thereon
Conditions of approval, if any, are attached

APPROVAL FOR TWO YEARS

Title 18 U.S.C. Section 11
States any false, fictitious

If earthen pits are used in association with the drilling of this well, an OCD pit permit must be obtained prior to pit construction.

*(Instructions on page 2)

SEE ATTACHED FOR
CONDITIONS OF APPROVALAPPROVAL SUBJECT TO
GENERAL REQUIREMENTS
AND SPECIAL STIPULATIONS
ATTACHED

United State Department of the Interior

BUREAU OF LAND MANAGEMENT

Roswell Resource Area

P.O. Drawer 1857

Roswell, New Mexico 88202-1857

Statement Accepting Responsibility for Operations

Operator name: COG Operating LLC
Street or box : 550 W. Texas Suite 1300
City, State : Midland, TX
Zip Code, : 79701

The undersigned accepts all applicable terms, conditions, stipulations, and restrictions concerning operations conducted on the leased land or portion thereof, as described below:

Lease No.: NM-074935 Electra Federal #19

Legal Description of land: Sec 15 T17S R30E SE/4 NW/4

Formation(s) (if applicable): Loco Hills; Glorietta Yeso

Bond Coverage: (State if individually bonded or another's bond)
Statewide Bond

BLM Bond File No.: NMB000215

Authorized Signature: 
Jerry W. Sherrell

Title: Production Clerk

Date: 7/18/07

RECEIVED

JUL 09 2007

Form C-102

DISTRICT I

1625 N. FRENCH DR., HOBBS, NM 88240

State of New Mexico
Energy, Minerals and Natural Resources Department

DISTRICT II

1301 W GRAND AVENUE, ARTESIA, NM 88210

DISTRICT III

1000 Rio Brazos Rd., Aztec, NM 87410

OIL CONSERVATION DIVISION

1220 SOUTH ST. FRANCIS DR.
Santa Fe, New Mexico 87505Revised October 12, 2005
Submit to Appropriate District Office
State Lease - 4 Copies
Fee Lease - 3 Copies

DISTRICT IV

1220 S. ST. FRANCIS DR., SANTA FE, NM 87505

WELL LOCATION AND ACREAGE DEDICATION PLAT

☐ AMENDED REPORT

API Number		Pool Code 96718	Pool Name Loco Hills; Glorieta-Yeso
Property Code 302483	Property Name ELECTRA FEDERAL		Well Number 19
OGRID No. 229137	Operator Name COG OPERATING, LLC		Elevation 3700'

Surface Location

UL or lot No.	Section	Township	Range	Lot Idn	Feet from the	North/South line	Feet from the	East/West line	County
F	15	17-S	30-E		2300	NORTH	1675	WEST	EDDY

Bottom Hole Location If Different From Surface

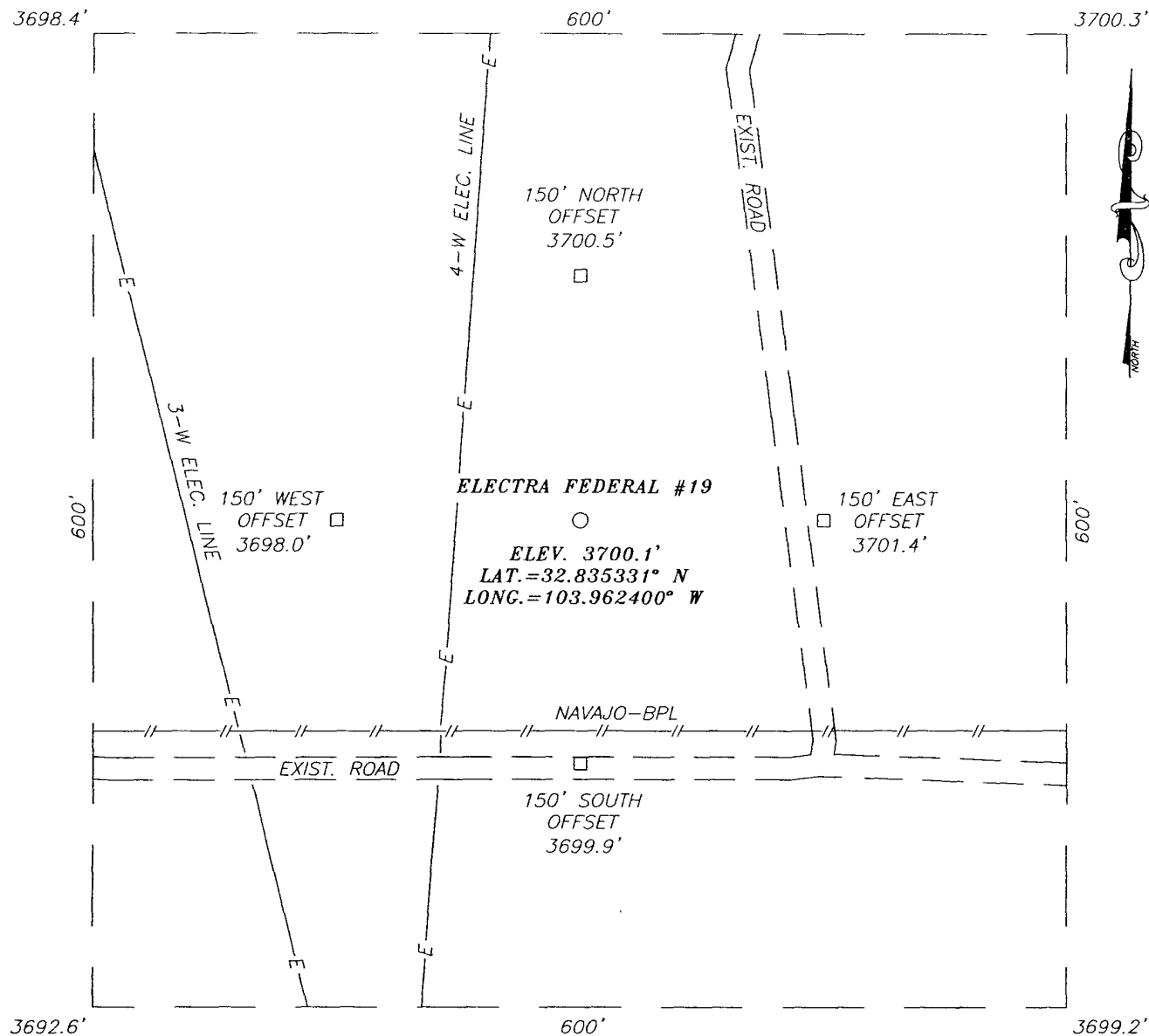
UL or lot No.	Section	Township	Range	Lot Idn	Feet from the	North/South line	Feet from the	East/West line	County

Dedicated Acres	Joint or Infill	Consolidation Code	Order No.
40			

NO ALLOWABLE WILL BE ASSIGNED TO THIS COMPLETION UNTIL ALL INTERESTS HAVE BEEN CONSOLIDATED
OR A NON-STANDARD UNIT HAS BEEN APPROVED BY THE DIVISION

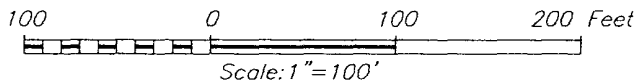
	<p>GEODETIC COORDINATES NAD 27 NME</p> <p>Y=667804.5 N X=613933.0 E</p> <p>LAT.=32 835331" N LONG.=103 962400" W</p>	<p>OPERATOR CERTIFICATION</p> <p>I hereby certify that the information herein is true and complete to the best of my knowledge and belief, and that this organization either owns a working interest or unleased mineral interest in the land including the proposed bottom hole location or has a right to drill this well at this location pursuant to a contract with an owner of such mineral or working interest, or to a voluntary pooling agreement or a compulsory pooling order heretofore entered by the division.</p> <p><i>Jerry W. Sherrell</i> 7/18/07 Signature Date</p> <p>Jerry W. Sherrell Printed Name</p>
	<p>SURVEYOR CERTIFICATION</p> <p>I hereby certify that the well location shown on this plat was plotted from field notes of actual surveys made by me or under my supervision, and that the same is true and correct to the best of my belief.</p>	
	<p>DATE SURVEYED: 7-28-2007</p> <p>SIGNATURE: <i>Ronald J. Eidson</i> AR</p> <p>SEAL OF PROFESSIONAL SURVEYOR 3239</p>	
	<p>Certificate No. GARY EIDSON 12641 RONALD J. EIDSON 3239</p>	

SECTION 15, TOWNSHIP 17 SOUTH, RANGE 30 EAST, N.M.P.M.,
EDDY COUNTY, NEW MEXICO



DIRECTIONS TO LOCATION

FROM THE INTERSECTION OF U.S. HWY. #82 AND CO. RD. #219 (GOAT ROPERS RD.), GO NORTH ON CO. RD. #219 APPROX. 1.8 MILES TURN RIGHT AND GO EAST APPROX. 0.9 MILES. TURN RIGHT AND GO SOUTH APPROX. 0.4 MILES. VEER RIGHT AND GO WEST APPROX. 0.1 MILE. VEER LEFT AND GO SOUTH APPROX. 0.1 MILE. THIS LOCATION IS APPROX. 150 FEET WEST OF ROAD IN PASTURE.



COG OPERATING, LLC

ELECTRA FEDERAL #19
LOCATED 2300 FEET FROM THE NORTH LINE
AND 1675 FEET FROM THE WEST LINE OF SECTION 15,
TOWNSHIP 17 SOUTH, RANGE 30 EAST, N.M.P.M.,
EDDY COUNTY, NEW MEXICO

Survey Date: 06/28/07	Sheet 1 of 1 Sheets
W.O. Number: 07.11.0806	Dr By: AR
Date: 7/5/07	Disk: 07110806
	Scale: 1"=100'

PROVIDING SURVEYING SERVICES
SINCE 1946
JOHN WEST SURVEYING COMPANY
412 N. DAL PASO
HOBBS, N.M. 88240
(505) 393-3117

DRILLING PROGRAM

1. Geologic Name of Surface Formation

Quaternary

2. Estimated Tops of Important Geologic Markers:

Quaternary	Surface
Top of Salt	500'
Base of Salt	1025'
Yates	1600'
Queen	2130'
San Andres	3050'
Glorietta	4320'

3. Estimated Depths of Anticipated Fresh Water, Oil and Gas:

Water Sand	150'	Fresh Water
Grayburg	2580'	Oil/Gas
San Andres	3050'	Oil/Gas
Paddock	3950'	Oil/Gas

No other formations are expected to give up oil, gas or fresh water in measurable quantities. Setting 13 3/8" casing to 425' and circulating cement back to surface will protect the surface fresh water sand. Salt Section will be protected by setting 8 5/8" casing to 1375' and circulating cement back to surface. Any shallower zones above TD, which contain commercial quantities of oil and/or gas, will have cement circulated across them by cementing 5 1/2" production casing, sufficient cement will be pumped to circulate back to surface.

4. Casing Program:

Hole Size	Interval	OD Casing	Wt, Grade, Type, Jt, Cond., Type
17 1/2"	0-425'	13 3/8"	48#, H-40, ST&C, New, 9.22/3.943/15.78
12 1/4"	0-1375'	8 5/8"	32#, J-55, ST&C, New, 3.03/2.029/7.82
7 7/8"	0-6100'	5 1/2"	17#, J-55, LT&C, New, 1.73/1.598/2.24

5. Cement Program:

13 3/8" Surface Casing: Class C 475sx, yield 1.32.

8 5/8 Intermediate Casing: Class C 800sx, yield 1.32.

5 1/2" Production Casing: Class C 1500sx, yield 1.32.

6. Minimum Specifications for Pressure Control:

The blowout preventer equipment (BOP) shown in Exhibit #9 will consist of a double ram-type (2000 psi WP) minimum preventer. This unit will be hydraulically operated and the ram type preventer will be equipped with blind rams on top of 4 1/2" drill pipe rams on bottom. The BOP will be nipped up on the 13 3/8" surface casing and tested to 1500 psi by a 3rd party. The BOP will then be nipped up on the 8 5/8" intermediate casing and tested by a 3rd party to 2000 psi and used continuously until TD is reached. All BOP's and accessory equipment will be tested to 2000 psi before drilling out of intermediate casing. Pipe rams will be operationally checked each 24-hour period. Blind rams will be operationally checked on each trip out of the hole. These checks will be noted on the daily tour sheets. Other accessories to the BOP equipment (Exhibit #10) will include a Kelly cock and floor safety valve and choke lines and choke manifold (Exhibit #11) with a minimum 2000 psi WP rating.

7. Types and Characteristics of the Proposed Mud System:

The well will be drilled to TD with a combination of brine, cut brine and polymer mud system. The applicable depths and properties of this system are as follows:

DEPTH	TYPE	WEIGHT	VISCOSITY	WATERLOSS
0-425'	Fresh Water	8.5	28	N.C.
425-1375'	Brine	10	30	N.C.
1375'-TD	Cut Brine	9.1	29	N.C.

Sufficient mud materials to maintain mud properties and meet minimum lost circulation and weight increase requirements will be kept at the well site at all times.

8. Auxiliary Well Control and Monitoring Equipment:

- A. Kelly cock will be kept in the drill string at all times.
- B. A full opening drill pipe-stabbing valve with proper drill pipe connections will be on the rig floor at all times.

9. Logging, Testing and Coring Program:

Attached to Form 3160-3
COG Operating LLC
Electra Federal #19
2300 FNL & 1675 FWL
SE/4 NW/4, Sec 15 T17S R30E
Eddy County, NM

- A. The electric logging program will consist of GR-Dual Laterolog, Spectral Density, Dual Spaced Neutron, CSNG Log and will be ran from T.D. to 8 5/8 casing shoe.
- B. Drill Stem test is not anticipated.
- C. No conventional coring is anticipated.
- D. Further testing procedures will be determined after the 5 1/2" production casing has been cemented at TD based on drill shows and log evaluation.

10. Abnormal Conditions, Pressures, Temperatures and Potential Hazards:

No abnormal pressures or temperatures are anticipated. The estimated bottom hole at TD is 110 degrees and estimated maximum bottom hole pressure is 2400 psig. Low levels of Hydrogen sulfide have been monitors in producing wells in the area, so H2S may be present while drilling of the well a plan is attached to the Drilling program. No major loss of circulation zones have been reported in offsetting wells.

11. Anticipated Starting Date and Duration of Operations:

Road and location work will not begin until approval has been received from the BLM. The anticipated spud date is August 18, 2007. Once commenced, the drilling operation should be finished in approximately 10 days. If the well is productive, an additional 30 days will be required for completion and testing before a decision is made to install permanent facilities.

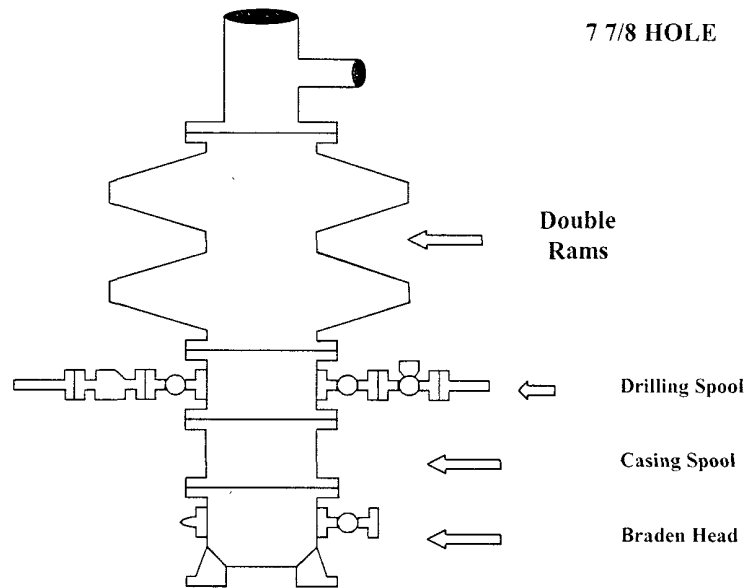
Attachment to Exhibit #9
NOTES REGARDING THE BLOWOUT PREVENTERS
Electra Federal #19
Eddy County, New Mexico

1. Drilling nipple to be so constructed that it can be removed without use of a welder through rotary table opening, with minimum I.D. equal to preventer bore.
2. Wear ring to be properly installed in head.
3. Blow out preventer and all fittings must be in good condition, 2000 psi WP minimum.
4. All fittings to be flanged.
5. Safety valve must be available on rig floor at all times with proper connections, valve to be full 2000 psi WP minimum.
6. All choke and fill lines to be securely anchored especially ends of choke lines.
7. Equipment through which bit must pass shall be at least as large as the diameter of the casing being drilled through.
8. Kelly cock on Kelly.
9. Extension wrenches and hands wheels to be properly installed.
10. Blow out preventer control to be located as close to driller's position as feasible.
11. Blow out preventer closing equipment to include minimum 40-gallon accumulator, two independent sources of pump power on each closing unit installation all API specifications.

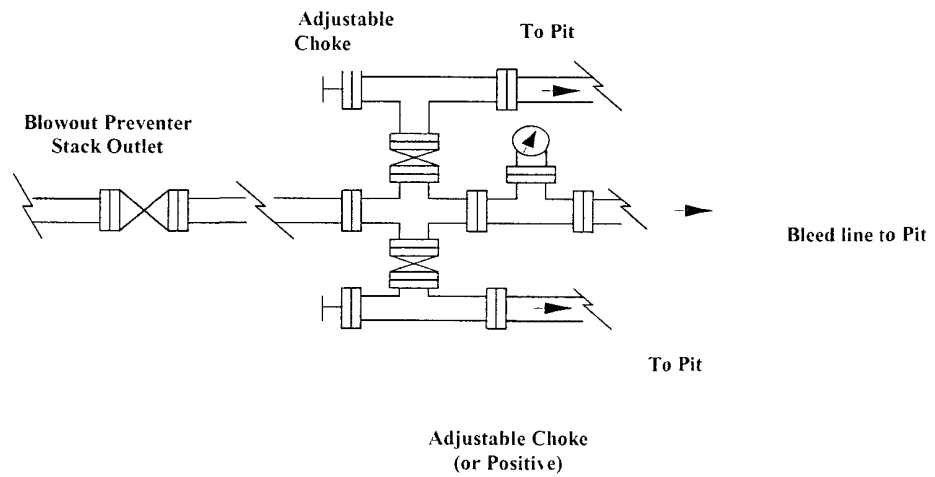
COG Operating LLC

Exhibit #9

BOPE Schematic



Choke Manifold Requirement (2000 psi WP) No Annular Required



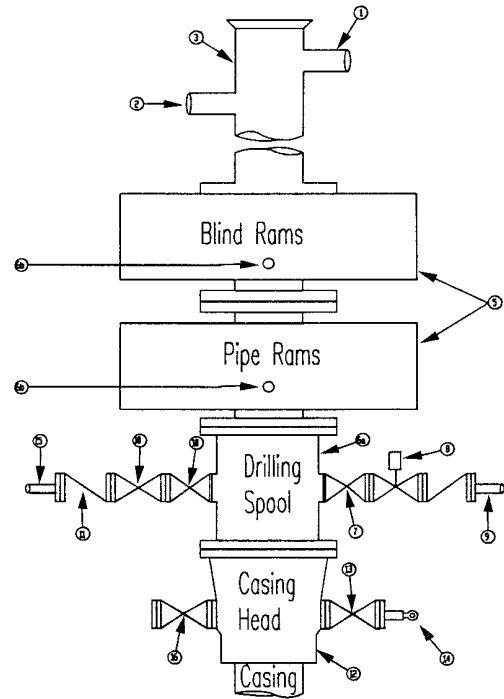
COG Operating LLC
Minimum Blowout Preventer Requirements
2000 psi Working Pressure
2 MWP
EXHIBIT #10

Stack Requirements

NO	Items	Min. I D	Min Nominal
1	Flowline		2"
2	Fill up line		2"
3	Drilling nipple		
4	Annular preventer		
5	Two single or one dual hydraulically operated rams		
6a	Drilling spool with 2" min. kill line and 3" min choke line outlets		2" Choke
6b	2" min. kill line and 3" min. choke line outlets in ram. (Alternate to 6a above)		
7	Valve Gate Plug	3 1/8	
8	Gate valve-power operated	3 1/8	
9	Line to choke manifold		3"
10	Valve Gate Plug	2 1/16	
11	Check valve	2 1/16	
12	Casing head		
13	Valve Gate Plug	1 13/16	
14	Pressure gauge with needle valve		
15	Kill line to rig mud pump manifold		2"

OPTIONAL

16	Flanged Valve	1 13/16	
----	---------------	---------	--



CONTRACTOR'S OPTION TO FURNISH

- 1 All equipment and connections above bradenhead or casinghead. Working pressure of preventers to be 2000 psi minimum
- 2 Automatic accumulator (80 gallon, minimum) capable of closing BOP in 30 seconds or less and, holding them closed against full rated working pressure
- 3 BOP controls, to be located near drillers' position
- 4 Kelly equipped with Kelly cock.
- 5 Inside blowout preventer or its equivalent on derrick floor at all times with proper threads to fit pipe being used
- 6 Kelly saver-sub equipped with rubber casing protector at all times
- 7 Plug type blowout preventer tester.
- 8 Extra set pipe rams to fit drill pipe in use on location at all times.
- 9 Type RX ring gaskets in place of Type R.

COG TO FURNISH

- 1 Bradenhead or casing head and side valves
2. Wear bushing If required

GENERAL NOTES

- 1 Deviations from this drawing may be made only with the express permission of COG's Drilling Manager
2. All connections, valves, fittings, piping, etc., subject to well or pump pressure must be flanged (suitable clamp connections acceptable) and have minimum working pressure equal to rated working pressure of preventers up through choke valves must be full opening and suitable for high pressure mud service
- 3 Controls to be of standard design and each marked, showing opening and closing position
4. Chokes will be positioned so as not to hamper or delay changing of choke beans. Replaceable parts for adjustable choke, or bean

- 5 sizes, retainers, and choke wrenches to be conveniently located for immediate use
- 5 All valves to be equipped with hand-wheels or handles ready for immediate use.
- 6 Choke lines must be suitably anchored
7. Handwheels and extensions to be connected and ready for use
8. Valves adjacent to drilling spool to be kept open Use outside valves except for emergency
- 9 All seamless steel-control piping (2000 psi working pressure) to have flexible joints to avoid stress. Hoses will be permitted.
- 10 Casinghead connections shall not be used except in case of emergency
- 11 Do not use kill line for routine fill up operations.

COG Operating LLC

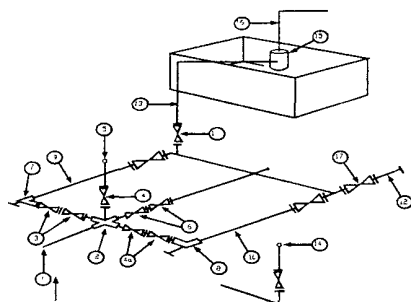
Exhibit #11

MINIMUM CHOKE MANIFOLD

3,000, 5,000, and 10,000 PSI Working Pressure

3M will be used or greater

3 MWP - 5 MWP - 10 MWP



Mud Pit

Reserve Pit

* Location of separator optional

Below Substructure

Minimum requirements

No.		3,000 MWP			5,000 MWP			10,000 MWP		
		I.D.	NOMINAL	Rating	I.D.	Nominal	Rating	I.D.	Nominal	Rating
1	Line from drilling Spool		3"	3,000		3"	5,000		3"	10,000
2	Cross 3" x 3" x 3" x 2"			3,000			5,000			
2	Cross 3" x 3" x 3" x 2"									10,000
3	Valve Gate Plug	3 1/8		3,000	3 1/8		5,000	3 1/8		10,000
4	Valve Gate Plug	1 13/16		3,000	1 13/16		5,000	1 13/16		10,000
4a	Valves (1)	2 1/16		3,000	2 1/16		5,000	2 1/16		10,000
5	Pressure Gauge			3,000			5,000			10,000
6	Valve Gate Plug	3 1/8		3,000	3 1/8		5,000	3 1/8		10,000
7	Adjustable Choke (3)	2"		3,000	2"		5,000	2"		10,000
8	Adjustable Choke	1"		3,000	1"		5,000	2"		10,000
9	Line		3"	3,000		3"	5,000		3"	10,000
10	Line		2"	3,000		2"	5,000		2"	10,000
11	Valve Gate Plug	3 1/8		3,000	3 1/8		5,000	3 1/8		10,000
12	Line		3"	1,000		3"	1,000		3"	2,000
13	Line		3"	1,000		3"	1,000		3"	2,000
14	Remote reading compound Standpipe pressure gauge			3,000			5,000			10,000
15	Gas Separator		2' x 5'			2' x 5'			2' x 5'	
16	Line		4"	1,000		4"	1,000		4"	2,000
17	Valve Gate Plug	3 1/8		3,000	3 1/8		5,000	3 1/8		10,000

- (1) Only one required in Class 3M
- (2) Gate valves only shall be used for Class 10 M
- (3) Remote operated hydraulic choke required on 5,000 psi and 10,000 psi for drilling.

EQUIPMENT SPECIFICATIONS AND INSTALLATION INSTRUCTION

- 1 All connections in choke manifold shall be welded, studded, flanged or Cameron clamp of comparable rating
- 2 All flanges shall be API 6B or 6BX and ring gaskets shall be API RX or BX. Use only BX for 10 MWP
- 3 All lines shall be securely anchored
- 4 Chokes shall be equipped with tungsten carbide seats and needles, and replacements shall be available
- 5 Choke manifold pressure and standpipe pressure gauges shall be available at the choke manifold to assist in regulating chokes. As an alternate with automatic chokes, a choke manifold pressure gauge shall be located on the rig floor in conjunction with the standpipe pressure gauge
- 6 Line from drilling spool to choke manifold should be as straight as possible. Lines downstream from chokes shall make turns by large bends or 90 degree bends using bull plugged tees

COG Operating LLC

Hydrogen Sulfide Drilling Operation Plan

I. HYDROGEN SULFIDE TRAINING

All personnel, whether regularly assigned, contracted, or employed on an unscheduled basis, will receive training from a qualified instructor in the following areas prior to commencing drilling operations on this well:

1. The hazards and characteristics of hydrogen sulfide (H₂S)
2. The proper use and maintenance of personal protective equipment and life support systems.
3. The proper use of H₂S detectors, alarms, warning systems, briefing areas, evacuation procedures, and prevailing winds.
4. The proper techniques for first aid and rescue procedures.

In addition, supervisory personnel will be trained in the following areas:

1. The effects of H₂S on metal components. If high tensile tubular are to be used, personnel will be trained in their special maintenance requirements.
2. Corrective action and shut-in procedures when drilling or reworking a well and blowout prevention and well control procedures.
3. The contents and requirements of the H₂S Drilling Operations Plan and Public Protection Plan.

There will be an initial training session just prior to encountering a known or probable H₂S zone (within 3 days or 500 feet) and weekly H₂S and well control drills for all personnel in each crew. The initial training session shall include a review of the site specific H₂S Drilling Operations Plan and the Public Protection Plan. The concentrations of H₂S of wells in this area from surface to TD are low enough that a contingency plan is not required.

II. H2S SAFETY EQUIPMENT AND SYSTEMS

Note: All H2S safety equipment and systems will be installed, tested, and operational when drilling reaches a depth of 500 feet above, or three days prior to penetrating the first zone containing or reasonable expected to contain H2S.

1. Well Control Equipment:

- A. Flare line.
- B. Choke manifold.
- C. Blind rams and pipe rams to accommodate all pipe sizes with properly sized closing unit.
- D. Auxiliary equipment may include if applicable: annular preventer & rotating head.

2. Protective equipment for essential personnel:

- A. Mark II Survive air 30-minute units located in the doghouse and at briefing areas, as indicated on well site diagram.

3. H2S detection and monitoring equipment:

- A. 1 portable H2S monitors positioned on location for best coverage and response. These units have warning lights and audible sirens when H2S levels of 20 PPM are reached.

4. Visual warning systems:

- A. Wind direction indicators as shown on well site diagram (Exhibit #8).
- B. Caution/Danger signs (Exhibit #7) shall be posted on roads providing direct access to location. Signs will be painted a high visibility yellow with black lettering of sufficient size to be readable at a reasonable distance from the immediate location. Bilingual signs will be used, when appropriate. See example attached.

5. Mud program:

- A. The mud program has been designed to minimize the volume of H2S circulated to surface. Proper mud weight, safe drilling practices, and the use of H2S scavengers will minimize hazards when penetrating H2S bearing zones.

6. Metallurgy:

- A. All drill strings, casings, tubing, wellhead, blowout preventer, drilling spool, kill lines, choke manifold and lines, and valves shall be suitable for H₂S service.
- B. All elastomers used for packing and seals shall be H₂S trim.

7. Communication:

- A. Radio communications in company vehicles including cellular telephone and 2-way radio.
- B. Land line (telephone) communication at Office.

8. Well testing:

- A. Drill stem testing will be performed with a minimum number of personnel in the immediate vicinity, which are necessary to safely and adequately conduct the test. The drill stem testing will be conducted during daylight hours and formation fluids will not be flowed to the surface. All drill-stem-testing operations conducted in an H₂S environment will use the closed chamber method of testing.
- B. There will be no drill stem testing.

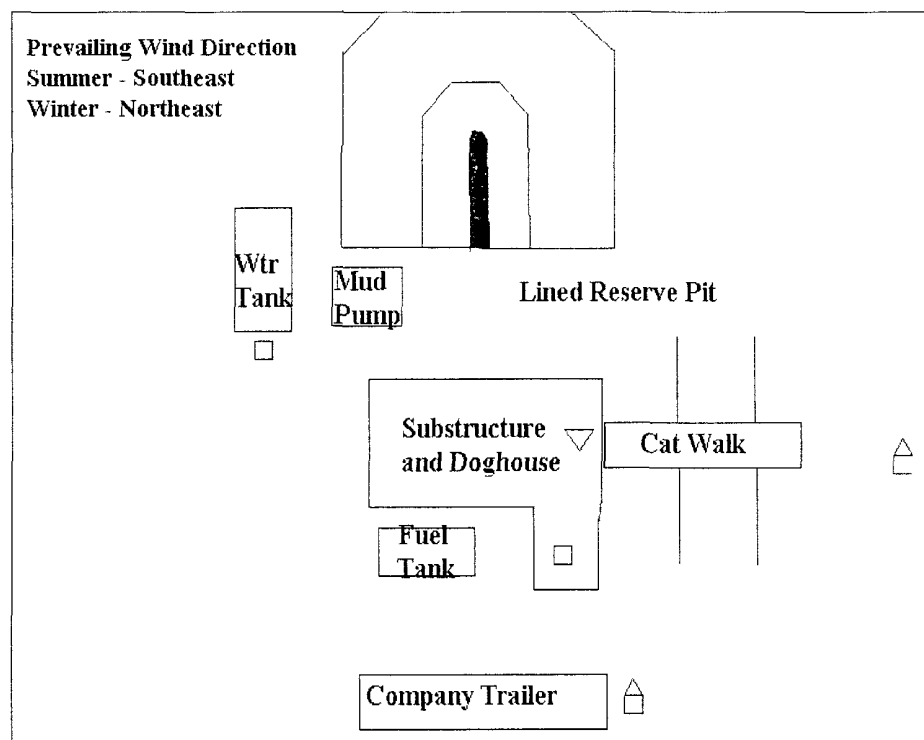
EXHIBIT #7

WARNING
YOU ARE ENTERING AN H₂S
AUTHORIZED PERSONNEL ONLY

- 1. BEARDS OR CONTACT LENSES NOT ALLOWED**
- 2. HARD HATS REQUIRED**
- 3. SMOKING IN DESIGNATED AREAS ONLY**
- 4. BE WIND CONSCIOUS AT ALL TIMES**
- 5. CHECK WITH COG OPERATING FOREMAN AT OFFICE**

COG OPERATING LLC
432-685-4304

DRILLING LOCATION H₂S SAFTY EQUIPMENT
Exhibit # 8



- ▽ H2S Monitors with alarms at the bell nipple
- Wind Direction Indicators
- △ Safe Briefing areas with caution signs and breathing equipment min 150 feet from

SURFACE USE AND OPERATING PLAN

1. Existing & Proposed Access Roads

- A. The well site and elevation plat for the proposed well is shown in Exhibit #1. It was staked by John West Engineering, Hobbs, NM.
- B. All roads to the location are shown in Exhibit below. The existing lease roads are illustrated in Blue and are adequate for travel during drilling and production operations. Upgrading existing roads prior to drilling well will be done where necessary.
- C. Directions to Location: From Loco Hills, go north 1.8 miles on CR 219, turn east .9 mile, turn south .6 mile, this location is 150' west.
- D. Routine grading and maintenance of existing roads will be conducted as necessary to maintain their condition as long as any operations continue on this lease.

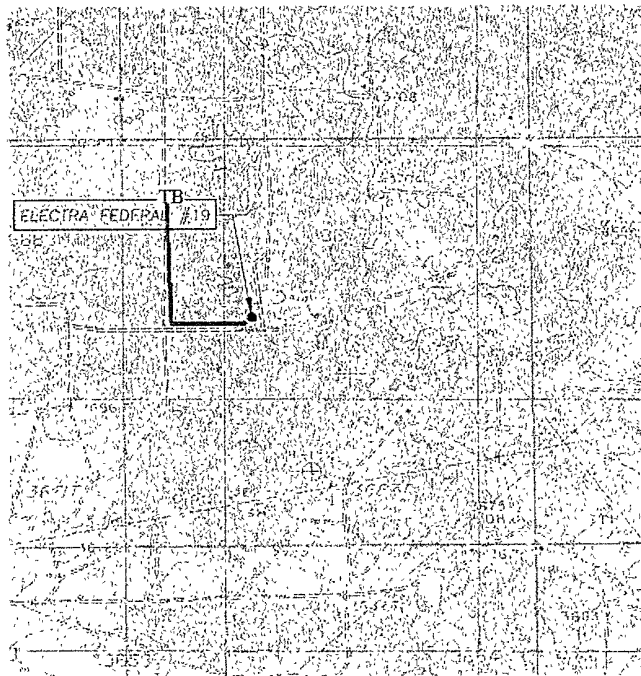


Exhibit #4

2. Proposed Access Road:

Exhibit #3 shows the 0' of new access road to be constructed. The road will be constructed as follows:

Attached to Form 3160-3
COG Operating LLC
Electra Federal #19
2300 FNL & 1675 FWL
SE/4 NW/4, Sec 15 T17S R30E
Eddy County, NM

- A. The Maximum width of the running surface will be 14'. The road will be crowned and ditched and constructed of 6" rolled and compacted caliche. Ditches will be at 3:1 slope and 4 feet wide. Water will be diverted where necessary to avoid ponding, prevent erosion, maintain good drainage, and to be consistent with local drainage patterns.
- B. The average grade will be less than 1%.
- C. No turnouts are planned.
- D. No culverts, cattleguard, gates, low water crossings or fence cuts are necessary.
- E. Surfacing material will consist of native caliche. Caliche will be obtained from the nearest BLM approved caliche pit or reserve pit area.
- F. The proposed access road as shown in Exhibit #3 has been centerline flagged by John West Engineering, Hobbs, New Mexico.

3. Location of Existing Wells & Proposed flow lines for New Wells:

Exhibit #4 shows all existing wells within a one-mile radius of this well. As shown on this plat there are numerous wells producing from the San Andres and Yeso formations. Proposed flow lines, will follow an archaeologically approved route to the Tank Battery.

4. Location of Existing and/or Proposed Facilities:

- A. COG Operating LLC does operate a production facility on this lease.
- B. If the well is productive, contemplated facilities will be as follows:
 - 1) Yeso Completion: Will be sent to the Electra Federal tank battery. The Facility is shown in Exhibit #5.
 - 2) The tank battery and facilities including all flow lines and piping will be installed according to API specifications.
 - 3) Any additional caliche will be obtained from a BLM approved caliche pit. Any additional construction materials will be purchased from contractors.

Attached to Form 3160-3
 COG Operating LLC
 Electra Federal #19
 2300 FNL & 1675 FWL
 SE/4 NW/4, Sec 15 T17S R30E
 Eddy County, NM

- 4) It will be necessary to run electric power if this well is productive. Power will be run by CVE and they will send in a separate plan for power.

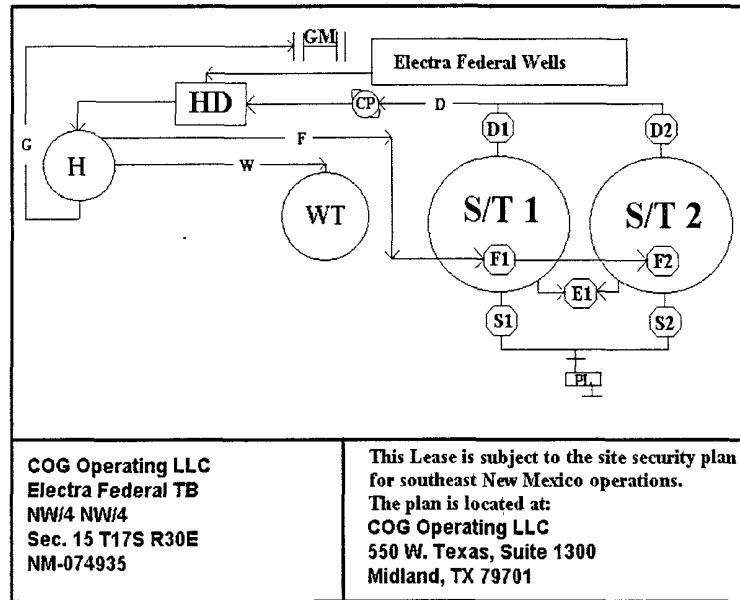


Exhibit #5

A. If the well is productive, rehabilitation plans are as follows:

- 1) The reserve pit will be back filled after the contents of the pit are dry (within 120 days after the well is completed).
- 2) Topsoil removed from the drill site will be used to recontour the pit area to the original natural level, as nearly as possible, and reseeded as per BLM specifications.

5. Location and Type of Water Supply:

The well will be drilled with combination brine and fresh water mud system as outlined in the drilling program. The water will be obtained from commercial water stations in the area and hauled to location by transport truck over the existing and proposed access roads shown in Exhibit #4. If a commercial fresh water source is nearby, fasline may be laid along existing road ROW's and fresh water pumped to the well. No water well will be drilled on the location.

6. Source of Construction Materials:

All caliche required for construction of the drill pad and proposed new access road (approximately 2500 cubic yards) will be obtained from a BLM approved caliche pit or the reserve pit.

7. Methods of Handling Water Disposal:

- A. Drill cuttings not retained for evaluation purposes will be disposed into the reserve pit.
- B. Drilling fluids will be contained in a lined working pit. The reserve pit will contain any excess drilling fluid or flow from the well during drilling, cementing and completion operations. The reserve pit will be an earthen pit, approximately 125' X 125' X 10' deep with a dividing wall dividing it into two horseshoe style pits and fenced on three sides prior to drilling. It will be fenced on the fourth side immediately following rig removal. The reserve pit will be lined 125' X 125' X 10'. The reserve pit will be lined (12-mil thickness) to minimize loss of drilling fluids and saturation of the ground with brine water.
- C. Water produced from the well during completion may be disposed into the reserve pit or a steel tank (depending on the rates). After the well is permanently placed on production, produced water will be collected in tanks (fiberglass) until pumped to an approved disposal system; produced oil will be collected in steel tanks until sold.
- D. Garbage and trash produced during drilling or completion operations will be collected in a trash bin and hauled to an approved landfill. All water and fluids will be disposed of into the reserve pit. Salts and other chemicals produced during drilling or testing will be disposed into the reserve pit. No toxic waste or hazardous chemicals will be produced by this operation.
- E. After the rig is moved out and the well is either completed or abandoned, all waste materials will be cleaned up within 30 days. The reserve pit will be completely fenced and kept closed until it has dried. When the reserve pit is dry enough to breakout and backfill and reseeded as per BLM specifications as weather permits. In the event of a dry hole only a dry hole marker will remain.

8. Ancillary Facilities:

No airstrip, campsite or other facilities will be built as a result of the operation on this well.

9. Well Site Layout:

- A. The drill pad layout, with elevations staked by John West Engineering, is shown in Exhibit #6. Dimensions of the pad and pits are shown. Topsoil, if available, will be stockpiled per BLM specifications. Because the pad is almost level no major cuts will be required.
- B. Diagram below shows the proposed orientation of reserve pit, working pit and access road. There is a possibility that the pits will be moved around depending on Caliche in the area. No permanent living facilities are planned, but a temporary foreman/toolpusher's trailer will be on location during the drilling operations.
- C. The reserve pit will be lined with high quality plastic sheeting (12 mil thickness).

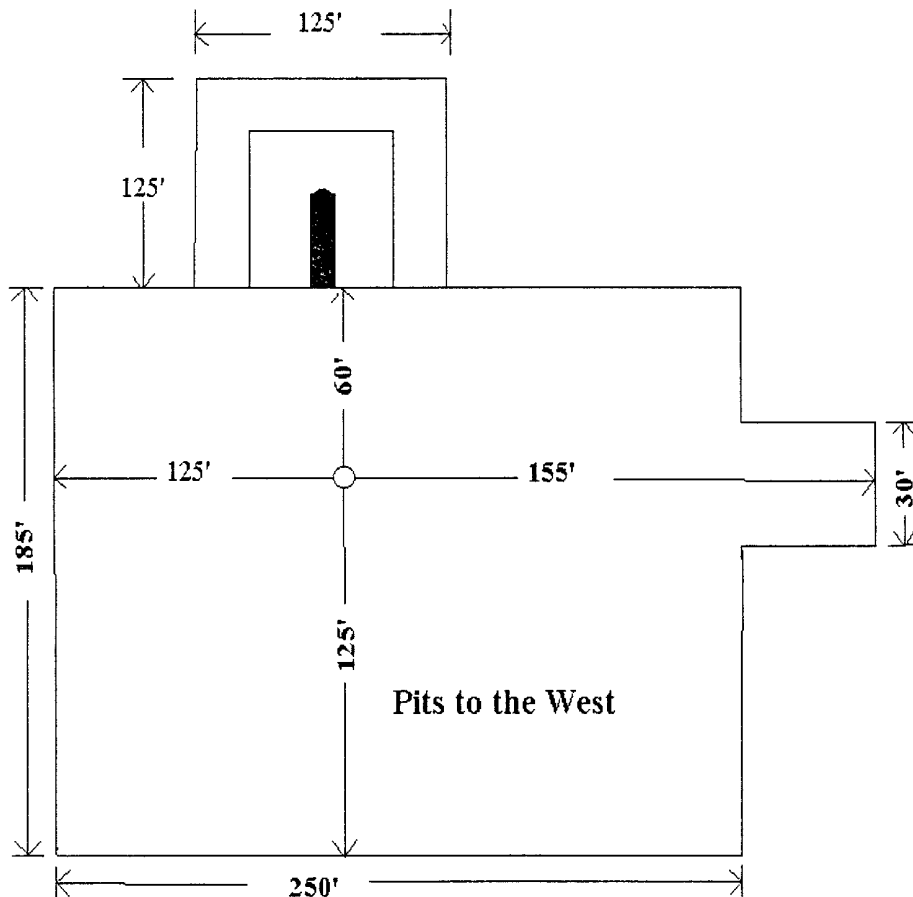


Exhibit #6

Attached to Form 3160-3
COG Operating LLC
Electra Federal #19
2300 FNL & 1675 FWL
SE/4 NW/4, Sec 15 T17S R30E
Eddy County, NM

10. Plans for Restoration of the Surface:

- A. Upon completion of the proposed operations, the pit area, after allowing drying, will be broken out and leveled. The original topsoil will be returned to the pit area, which will be leveled and contoured to as nearly the original topography as possible.
- B. The disturbed area will be revegetated by reseeding during the proper growing season with a seed mixture of native grasses as recommended by the BLM.
- C. Three sides of the reserve pit will be fenced prior to and during drilling operations. At the time that the rig is removed, the reserve pit will be fenced on the rig (fourth) side to prevent livestock from being entrapped. The fencing will remain in place until the pit area is cleaned up and leveled. No oil will be left on the surface of the fluid in the pit.
- D. Upon completion of proposed operations, if the well is completed, the reserve pit area will be treated as outlined above within the same prescribed time. Any additional caliche required for facilities will be obtained from a BLM approved caliche pit. Topsoil removed from the drill site will be used to recontour the pit area to its original natural level and reseeded as per BLM specifications.

11. Surface Ownership:

The well site and lease is located entirely on Federal surface. We have notified the surface lessee of the impending operations. According to BLM the leasee is Charles Martin, P.O. Box 706, Artesia NM 88211.

12. Other Information:

- A. The area around the well site is grassland and the topsoil is sandy. The vegetation is native scrub grass with sagebrush.
- B. There is no permanent or live water in the immediate area.
- C. A Cultural Resources Examination has been requested and will be forwarded to your office in the near future.

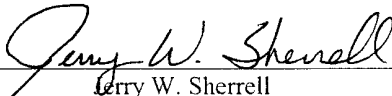
13. Lessee's and Operator's Representative:

The COG Operating LLC representative responsible for assuring compliance with the surface use plan is as follows:

Jerry W. Sherrell
COG Operating LLC
P.O. Box 960
Artesia, NM 88211-0960
Phone (505) 748-1288 (office)

CERTIFICATION

I hereby certify that I, or person under my direct supervision, have inspected the proposed drill site and access route; that I am familiar with the conditions which currently exist; that the statements made in this APD are to the best of my knowledge, true and correct; and the work associated with the operations proposed herein will be performed by COG Operating LLC and its contractors and subcontractors in conformity with this plan and the terms and conditions which it is approved. This statement is subject to the provisions of 18 U.S.C. 1001 for the filing of a false statement.

Date: 7-18-07Signed: 
Jerry W. Sherrell

CONDITIONS OF APPROVAL - DRILLING

Operator's Name: COG Operating LLC
Well Name & No. 19-Electra Federal
Location: 2300' FNL, 1675' FWL, Sec. 15, T-17-S, R-30-E, Eddy County, NM
Lease: NM-074935

.....

I. DRILLING OPERATIONS REQUIREMENTS:

A. The Bureau of Land Management (BLM) is to be notified a minimum of 2 hours in advance for a representative to witness:

1. Spudding well
2. Setting and/or Cementing of all casing strings
3. BOPE tests

- Eddy County call the Carlsbad Field Office, 620 East Greene St., Carlsbad, NM 88220, (505) 361-2822

B. A Hydrogen Sulfide (H₂S) Drilling Plan should be activated 500 feet prior to drilling into the Grayburg formation. **H₂S has been reported in sections 12 and 15 from the Grayburg Jackson pool measuring 500-1800 ppm.**

C. Unless the production casing has been run and cemented or the well has been properly plugged, the drilling rig shall not be removed from over the hole without prior approval.

D. When floor controls are required, (3M or Greater); controls will be on the rig floor, unobstructed, readily accessible to the driller and will be operational at all times during drilling and/or completion activities. Rig floor is defined as the area immediately around the rotary table; the area immediately above the substructure on which the draw works are located, this does not include the dog house or stairway area.

II. CASING:

A. The 13-3/8 inch surface casing shall be set **a minimum of 25 feet into the Rustler Anhydrite and 25 feet above the salt at approximately 425** feet and cemented to the surface.

1. If cement does not circulate to the surface, the appropriate BLM office shall be notified and a temperature survey utilizing an electronic type temperature survey with a surface log readout will be used or a cement bond log shall be run to verify the top of the cement.
2. Wait on cement (WOC) time for a primary cement job will be a minimum of 18 hours or 500 pounds compressive strength, whichever is greater. (This is to include the lead cement)
3. Wait on cement (WOC) time for a remedial job will be a minimum of 4 hours after bringing cement to surface or 500 pounds compressive strength, whichever is greater.
4. **If cement falls back, remedial action will be done prior to drilling out that string.**

Possible lost circulation in the Grayburg and San Andres formations.

Possible water flows in the Salado and Artesia Groups.

- B. The minimum required fill of cement behind the 8-5/8 inch intermediate casing is **for cement to come to surface**. If cement does not circulate see A.1 thru 4.
- C. The minimum required fill of cement behind the 5-1/2 inch production casing is **for cement to come to surface**. If cement does not circulate see A.1 thru 4.
- D. If hardband drill pipe is rotated inside casing; returns will be monitored for metal. If metal is found in samples, drill pipe will be pulled and rubber protectors which have a larger diameter than the tool joints of the drill pipe will be installed prior to continuing drilling operations.

III. PRESSURE CONTROL:

- A. All blowout preventer (BOP) and related equipment (BOPE) shall comply with well control requirements as described in Onshore Oil and Gas Order No. 2 and API RP 53 Sec. 17.
- B. The appropriate BLM office shall be notified a minimum of 2 hours in advance for a representative to witness the tests.
 - 1. The tests shall be done by an independent service company.
 - 2. The results of the test shall be reported to the appropriate BLM office.
 - 3. All tests are required to be recorded on a calibrated test chart. A copy of the BOP/BOPE test chart and a copy of independent service company test will be submitted to the appropriate BLM office.
 - 4. The BOP/BOPE test shall include a low pressure test from 250 to 300 psi. The test will be held for a minimum of 10 minutes if test is done with a test plug and 30 minutes without a test plug.
 - 5. **Variance approved to test BOP and BOPE when nipped up on the 13-3/8" casing to 1500 psi by independent service company.**

Engineer on call phone (after hours): Carlsbad - 505-706-2779

WWI 082107