

September 28, 2007

VIA HAND DELIVERY

Mark E. Fesmire, P.E.
Director
Oil Conservation Division
New Mexico Department of Energy,
Minerals and Natural Resources
1220 South Saint Francis Drive
Santa Fe, New Mexico 87505

Re: Application of EOG Resources, Inc. for Administrative Approval of the Simultaneous Dedication of the S/2 of Section 24, Township 16 South, Range 24 East, N.M.P.M., Eddy County, New Mexico to its proposed Robinson HW Fed Com Well No. 2H and the existing Robinson HW Fed Com Well No. 3H.

Dear Mr. Fesmire:

EOG Resources, Inc. ("EOG") is the operator of a standard 320-acre gas spacing unit in the Cottonwood Creek-Wolfcamp West Gas Pool (**Pool Code 75260**) comprised of the S/2 of Section 24, Township 16 South, Range 24 East, N.M.P.M., Eddy County, New Mexico from which its Robinson HW Fed Com Well No. 3H currently produces from the Wolfcamp formation.

Pursuant to Oil Conservation Division Rule 104.D(3), EOG hereby makes application for administrative approval of the simultaneous dedication of this standard 320-acre gas spacing and proration unit to the following two horizontal gas wells:

- A. the existing ROBINSON HW FED COM WELL NO. 3H (API No. 30-015-35812) horizontally drilled from a surface location 1880 feet from the South line and 360 feet from the East line to a proposed end point or bottomhole location 1880 feet from the South line and 660 feet from the West line of said Section 24; and
- B. the proposed ROBINSON HW FED COM WELL NO. 2H (API No. 30-015-35811) to be horizontally drilled from a surface location 910 feet from the South line and 510 feet from the East line to a proposed end point or bottomhole location 760 feet from the South line and 660 feet from the West line of said Section 24.



Both the penetration point and the bottomhole location for the Robinson HW Fed Com Well No. 3H are at a standard location in the Wolfcamp formation pursuant to Division Rules 104.C(2)(a) and 111.A(7). EOG now intends to horizontally drill and complete its proposed Robinson HW Fed Com Well No. 2H to be drilled to the targeted subsurface end-point or bottomhole location 760 feet from the South line and 660 feet from the West line (Unit M) of Section 24. EOG proposes to drill this well in compliance with the set-back requirements of Division Rules 104.C(2)(b) and 111.A(7) for deep gas wells in southeast New Mexico.

Attached hereto as **Exhibit A** is a copy of Division Form C-102 for this well that shows the proposed surface and bottomhole location of the well.

The simultaneous dedication of the S/2 of said Section 24 to the Robinson HW Fed Com Well No's. 3H and 2H will afford EOG the opportunity to efficiently produce the Wolfcamp formation under this spacing unit. EOG's proposed simultaneous dedication of these wells does not exceed the number of wells authorized by Division Rule for this spacing unit nor will either well be closer to the outer boundary of the horizontal well project area than permitted by Division Rules. Accordingly, there are no other interest owners who are affected by this application.

Your attention to this application is appreciated.

Sincerely,

Kristina Martinez
Attorney for EOG Resources

KEM
Enclosure

District I
1625 N. French Dr., Hobbs, NM 88240
District II
1301 W. Grand Avenue, Artesia, NM 88210
District III
1000 Rio Brazos Rd., Aztec, NM 87410
District IV
1220 S. St. Francis Dr., Santa Fe, NM 87505

State of New Mexico
Energy, Minerals & Natural Resources Department
OIL CONSERVATION DIVISION
1220 South St. Francis Dr.
Santa Fe, NM 87505

Form C-102
Revised October 12, 2005
Submit to Appropriate District Office
State Lease- 4 Copies
Fee Lease- 3 Copies

☐ AMENDED REPORT

WELL LOCATION AND ACREAGE DEDICATION PLAT

API Number 30-015-35811	Pool Code 75260	Pool Name Co Honwood Creek; Wolfcamp West
Property Code	Property Name ROBINSON HW FED. COM	Well Number 2H
OGRID No. 7377	Operator Name EOG RESOURCES, INC.	Elevation 3642'

Surface Location

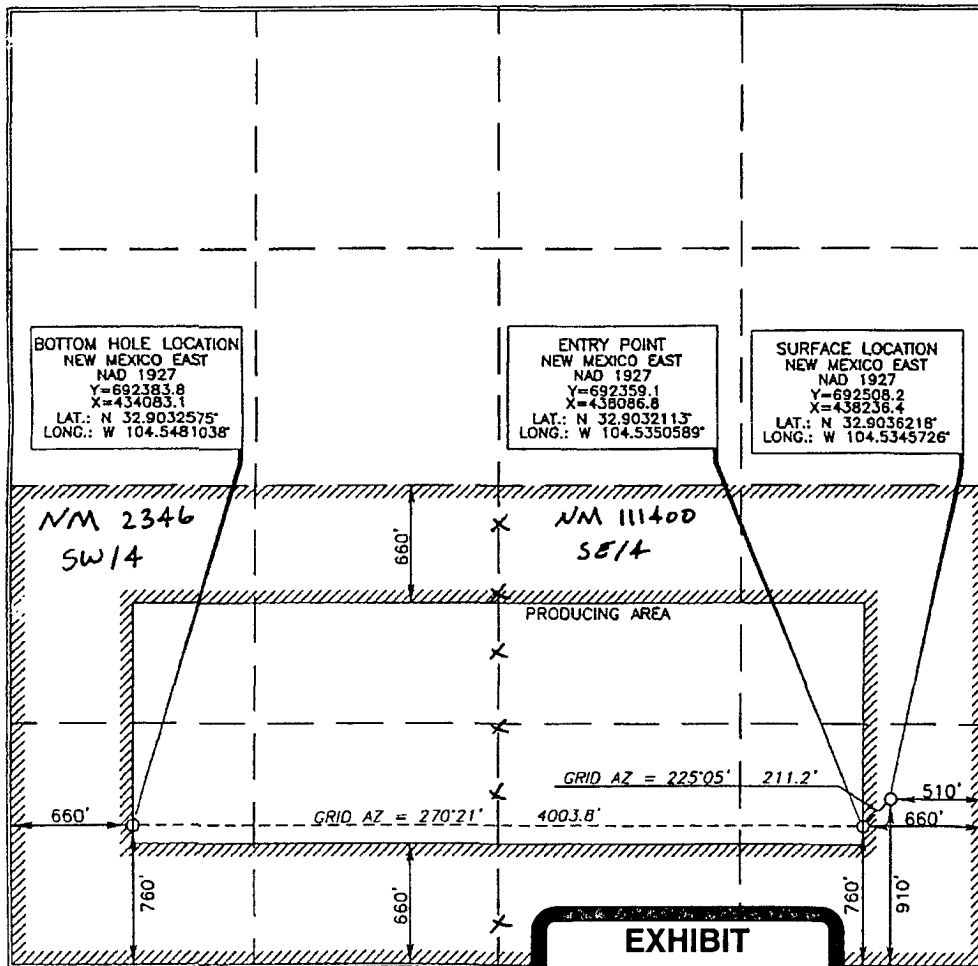
UL or lot no.	Section	Township	Range	Lot Idn	Feet from the	North/South line	Feet from the	East/West line	County
P	24	16 SOUTH	24 EAST, N.M.P.M.		910'	SOUTH	510'	EAST	EDDY

Bottom Hole Location If Different From Surface

UL or lot no.	Section	Township	Range	Lot Idn	Feet from the	North/South line	Feet from the	East/West line	County
M	24	16 SOUTH	24 EAST, N.M.P.M.		760'	SOUTH	660'	WEST	EDDY

Dedicated Acres	Joint or Infill	Consolidation Code	Order No.
320			

No allowable will be assigned to this completion until all interests have been consolidated or a non-standard unit has been approved by the division.



OPERATOR CERTIFICATION

I hereby certify that the information contained herein is true and complete to the best of my knowledge and belief, and that this organization either owns a working interest or unleased mineral interest in the land including the proposed bottom hole location or has a right to drill this well at this location pursuant to a contract with an owner of such a mineral or working interest, or to a voluntary pooling agreement or a compulsory pooling order heretofore entered by the division.

Donny G. Glanton 8/28/07
Signature Date

Donny G. Glanton
Printed Name

SURVEYOR CERTIFICATION

I hereby certify that the well location shown on this plat was plotted from field notes of actual surveys made by me or under my supervision, and that the same is true and correct to the best of my belief.

Tommy D. Paul 8/20/2007
Date of Survey

Signature and Seal of Professional Surveyor

Tommy D. Paul 8/20/2007
Certificate Number 15079

WO# 070620WL-d (REV. A)(JL)

