



July 2, 2007

HAND-DELIVERED

Mark E. Fesmire, P. E.
Director
Oil Conservation Division
New Mexico Department of Energy,
Minerals and Natural Resources
1220 South Saint Francis Drive
Santa Fe, New Mexico 87505

RECEIVED
2007 JUL 2 PM 2 19

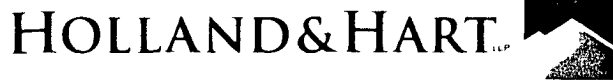
Re: Application of EOG Resources, Inc. for Administrative Approval of the Simultaneous Dedication of the N/2 of Section 22, Township 16 South, Range 24 East, N.M.P.M., Eddy County, New Mexico to its proposed Colorado A 22 Fed Com Well No. 2H and the existing Colorado A 22 Fed Com Well No. 1H.

Dear Mr. Fesmire:

EOG Resources, Inc. is the operator of a standard 320-acre spacing unit in the Undesignated West Cottonwood Creek-Wolfcamp Gas Pool (**Pool Code 75260**) comprised of the N/2 of Section 22, Township 16 South, Range 24 East, N.M.P.M., Eddy County, New Mexico. This spacing unit is dedicated to EOG's Colorado A 22 Fed Com Well No. 1H which has been horizontally drilled and produces from the Wolfcamp formation.

EOG seeks administrative approval of the simultaneous dedication of this standard 320-acre gas spacing unit to the following two horizontal gas wells:

- A. the existing Colorado A 22 Fed Com Well No. 1H (API No. 30-015-34710) horizontally drilled from a surface location 905 feet from the North line and 506 feet from the East line to a proposed end point or bottomhole location 760 feet from the North line and 660 feet from the West line of said Section 22; and
- B. the proposed Colorado A 22 Fed Com Well No. 2H (API No. 30-015 - 34711) to be horizontally drilled from a surface location 1949 feet from the North line and 586 feet from the East line to a proposed end point or bottomhole location 1880 feet from the North line and 660 feet from the West line of said Section 22.



Both the penetration point and the bottomhole location for the Colorado A 22 Fed Com Well No. 1H are at a standard location in the Wolfcamp formation pursuant to Division Rules 104.C (2) (a) and 111.A (7). EOG now intends to horizontally drill and complete its proposed Colorado A 22 Fed Com Well No. 2H to be drilled to the targeted subsurface end-point or bottomhole location 1880 feet from the North line and 660 feet from the West line (Unit E) of Section 22. EOG proposes to drill this well in compliance with the set-back requirements of Division Rules 104.C(2)(b) and 111.A(7) for deep gas wells in southeast New Mexico.

Attached hereto as **Exhibit A** is a copy of Division Form C-102 for this well that shows the proposed surface and bottomhole location of the well.

Exhibit B is a map of offset operators around the spacing unit in Section 22. **Exhibit C** is a list of affected parties as defined by Division Rules. As required by Rule 1210, a copy of this application (with attachments) has been sent to those affected parties in accordance with Rule 1207(A)(5) and they have been advised that if they have an objection to this application it must be filed in writing with the Division's Santa Fe office within twenty days from the date this notice was sent.

The simultaneous dedication of the N/2 of said Section 22 to the Colorado A 22 Fed Com Well Nos. 1H and 2H will afford EOG the opportunity to efficiently produce the Wolfcamp formation under this spacing unit. EOG's proposed simultaneous dedication of these wells does not exceed the number of wells allowed by Division Rule for this spacing unit.

Your attention to this application is appreciated.

Sincerely,

A handwritten signature in black ink that reads "Ocean Munds-Dry".

Ocean Munds-Dry
Attorney for EOG Resources, Inc.

Enclosures

District I
1825 N. French Dr., Hobbs, NM 88240
District II
1301 W. Grand Avenue, Artesia, NM 88210
District III
1000 Rio Brazos Rd., Aztec, NM 87410
District IV
1220 S. St. Francis Dr., Santa Fe, NM 87505

State of New Mexico
Energy, Minerals & Natural Resources Department
OIL CONSERVATION DIVISION
1220 South St. Francis Dr.
Santa Fe, NM 87505

Form C-102
Revised October 12, 2005
Submit to Appropriate District Office
State Lease- 4 Copies
Fee Lease- 3 Copies

☐ AMENDED REPORT

WELL LOCATION AND ACREAGE DEDICATION PLAT

API Number 30-015-34711	Pool Code 75260	Pool Name Unders Cottonwood Creek ; Wolfcamp West
Property Code	Property Name COLORADO A 22 FED COM	Well Number 2H
OGRID No. 7377	Operator Name EOG RESOURCES, INC.	Elevation 3631'

Surface Location

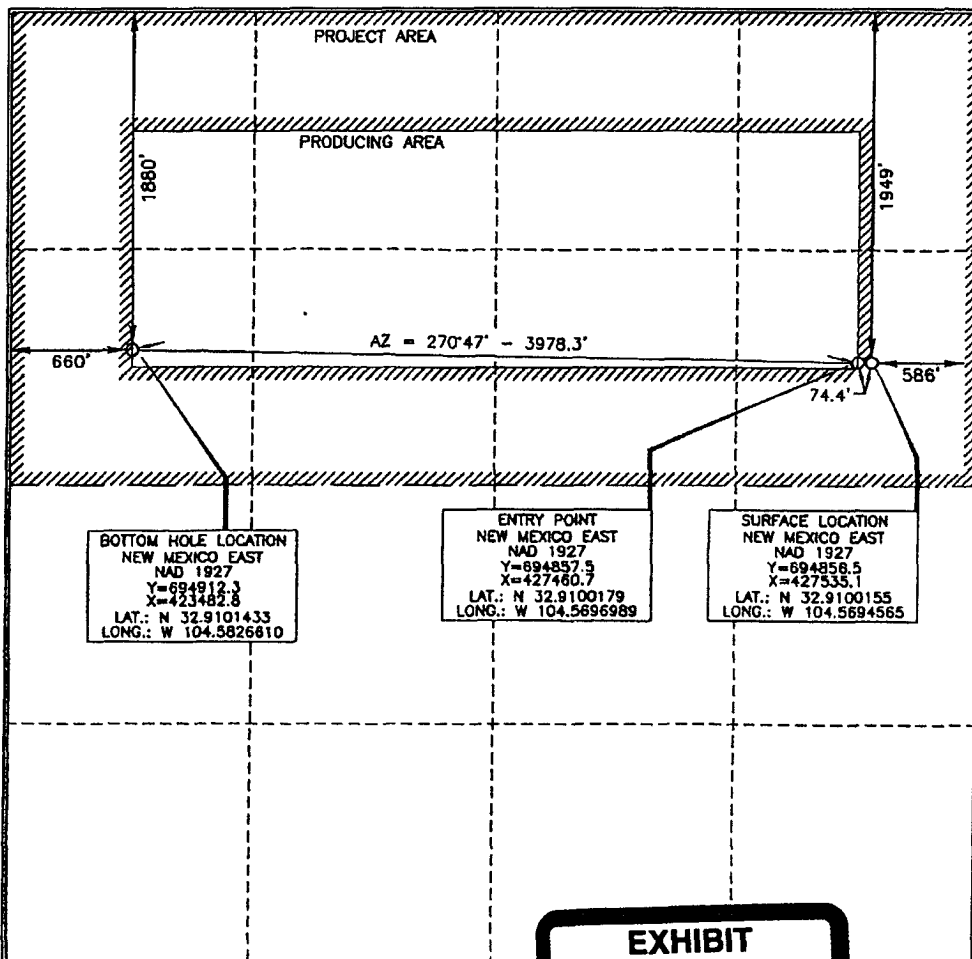
UL or lot no.	Section	Township	Range	Lot Idn	Feet from the	North/South line	Feet from the	East/West line	County
H	22	16 SOUTH	24 EAST, N.M.P.M.		1949	NORTH	586	EAST	EDDY

Bottom Hole Location If Different From Surface

UL or lot no.	Section	Township	Range	Lot Idn	Feet from the	North/South line	Feet from the	East/West line	County
E	22	16 SOUTH	24 EAST, N.M.P.M.		1880	NORTH	660	WEST	EDDY

Dedicated Acres 320	Joint or Infill	Consolidation Code	Order No.
-------------------------------	-----------------	--------------------	-----------

No allowable will be assigned to this completion until all interests have been consolidated or a non-standard unit has been approved by the division.



OPERATOR CERTIFICATION

I hereby certify that the information contained herein is true and complete to the best of my knowledge and belief, and that this organization either owns a working interest or unleased mineral interest in the land including the proposed bottom hole location or has a right to drill this well at this location pursuant to a contract with an owner of such a mineral or working interest, or to a voluntary pooling agreement or a compulsory pooling order heretofore entered by the division.

Donny G. Glanton 6/21/07
Signature Date

Donny G. Glanton
Printed Name

SURVEYOR CERTIFICATION

I hereby certify that the well location shown on this plat was plotted from field notes of actual surveys made by me or under my supervision, and that the same is true and correct to the best of my belief.

Jerry J. Asel 5/18/2007
Date of Survey

Jerry J. Asel
Signature of Professional Surveyor

Jerry J. Asel 5/18/2007
Certificate Number 15079

WO# 051219WL-b (CDG) REV. A

EXHIBIT

A

District I
1825 N. French Dr., Hobbs, NM 88240
District II
1301 W. Grand Avenue, Artesia, NM 88210
District III
1000 Rio Brazos Rd., Aztec, NM 87410
District IV
1220 S. St. Francis Dr., Santa Fe, NM 87505

State of New Mexico
Energy, Minerals & Natural Resources Department
OIL CONSERVATION DIVISION
1220 South St. Francis Dr.
Santa Fe, NM 87505

Form C-102
Revised October 12, 2005
Submit to Appropriate District Office
State Lease- 4 Copies
Fee Lease- 3 Copies

☐ AMENDED REPORT

WELL LOCATION AND ACREAGE DEDICATION PLAT

API Number 30-015-34710	Pool Code 75260	Pool Name Unders Cottonwood Creek ; Wolfcamp West
Property Code	Property Name COLORADO A 22 FED COM	Well Number 1H
OGRID No. 7377	Operator Name EOG RESOURCES, INC.	Elevation 3625'

Surface Location

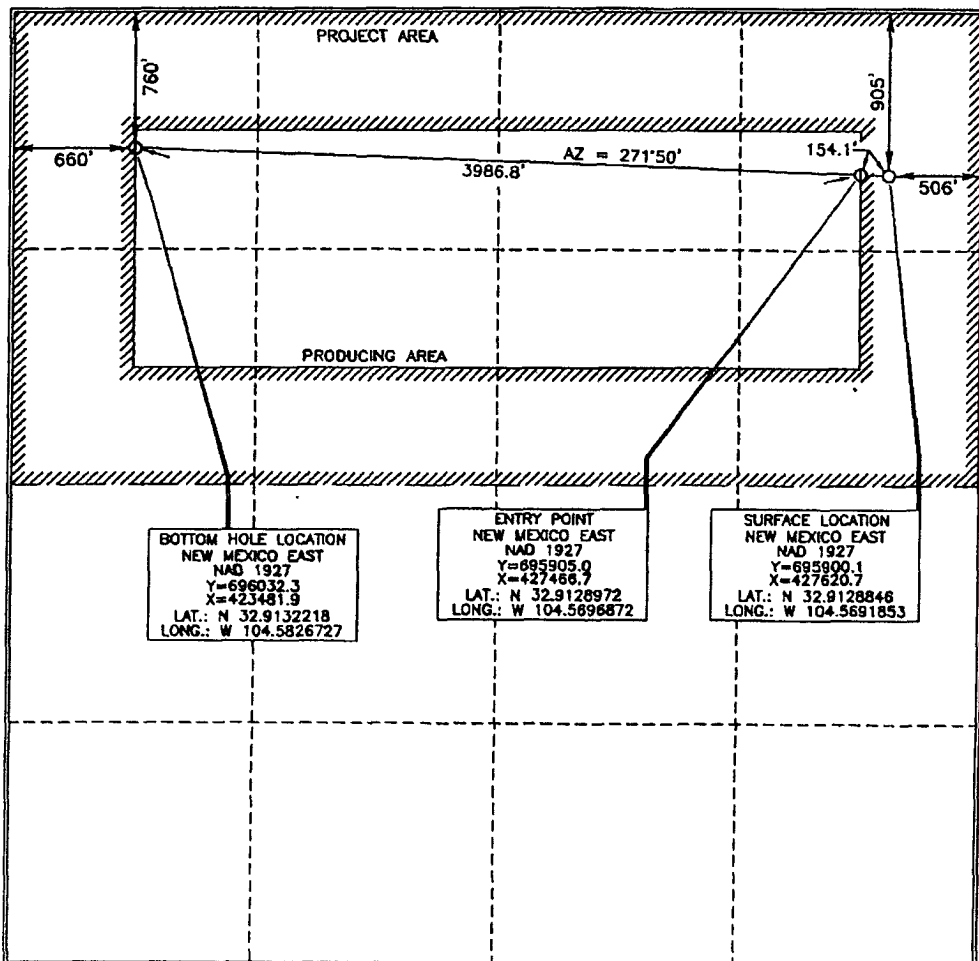
UL or lot no.	Section	Township	Range	Lot Idn	Feet from the	North/South line	Feet from the	East/West line	County
A	22	16 SOUTH	24 EAST, N.M.P.M.		905	NORTH	508	EAST	EDDY

Bottom Hole Location If Different From Surface

UL or lot no.	Section	Township	Range	Lot Idn	Feet from the	North/South line	Feet from the	East/West line	County
D	22	16 SOUTH	24 EAST, N.M.P.M.		760	NORTH	660	WEST	EDDY

Dedicated Acres 320	Joint or Infill	Consolidation Code	Order No.
-------------------------------	-----------------	--------------------	-----------

No allowable will be assigned to this completion until all interests have been consolidated or a non-standard unit has been approved by the division.



OPERATOR CERTIFICATION

I hereby certify that the information contained herein is true and complete to the best of my knowledge and belief, and that this organization either owns a working interest or unleased mineral interest in the land including the proposed bottom hole location or has a right to drill this well at this location pursuant to a contract with an owner of such a mineral or working interest, or to a voluntary pooling agreement or a compulsory pooling order heretofore entered by the division.

Donny G. Glanton 6/21/07
Signature Date

Donny G. Glanton
Printed Name

SURVEYOR CERTIFICATION

I hereby certify that the well location shown on this plat was plotted from field notes of actual surveys made by me or under my supervision, and that the same is true and correct to the best of my belief.

15079
JANUARY 12, 2008
Date of Survey

Terry J. Abel 5/18/2007
Signature and Date of Professional Surveyor
Certificate Number 15079

OFFSETS IN SECTION 22

State's NM (16)	EOG (5)				EOG (14)
LOX (21)	D	C	B	A	
	Colorado A 2 2				
	E	F	G	H	EOG (+WIO's) (23)
	L	K (22)	J	I	
	M	N	O	P	

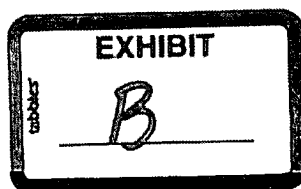


Exhibit C

**Application of EOG Resources, Inc.
Simultaneous Dedication of
N/2 of Section 22, Township 16 South, Range 24 East, NMPM
Eddy County, New Mexico**

LCX Energy, LLC
101 N. Marenfeld Suite 200
Midland, Texas 79701

Allar Company & EG3
P.O. Box 1567
Graham, Texas 76450

Talus, Inc. & Twin Montana, Inc.
P.O. Box 1210
Graham, Texas 76450

New Mexico State Land Office
P.O. Box 1148
Santa Fe, New Mexico 87504-1148