

UNITED STATES  
DEPARTMENT OF THE INTERIOR  
BUREAU OF LAND MANAGEMENT

OCD-ARTESIA

FORM APPROVED  
OMB NO. 1004-0135  
Expires: July 31, 2010**SUNDRY NOTICES AND REPORTS ON WELLS**  
*Do not use this form for proposals to drill or to re-enter an abandoned well. Use form 3160-3 (APD) for such proposals.*5. Lease Serial No.  
NMLC029419A

6. If Indian, Allottee or Tribe Name

7. If Unit or CA/Agreement, Name and/or No.  
SKELLY UNIT8. Well Name and No.  
SKELLY UNIT 549. API Well No.  
30-015-0535110. Field and Pool, or Exploratory  
GRAYBURG JACKSON11. County or Parish, and State  
EDDY COUNTY, NM**SUBMIT IN TRIPLICATE - Other instructions on reverse side.**

1. Type of Well

☒ Oil Well ☐ Gas Well ☐ Other2. Name of Operator  
FOREST OIL CORPORATIONContact: CINDY A BUSH  
E-Mail: cabush@forestoil.com3a. Address  
707 17TH STREET SUITE 3600  
DENVER, CO 802023b. Phone No. (include area code)  
Ph: 303-812-1554  
Fx: 303-864-6105

4. Location of Well (Footage, Sec., T., R., M., or Survey Description)

Sec 22 T17S R31E 1980FSL 660FWL

DEC 07 2007  
OCD-ARTESIA

## 12. CHECK APPROPRIATE BOX(ES) TO INDICATE NATURE OF NOTICE, REPORT, OR OTHER DATA

TYPE OF SUBMISSION	TYPE OF ACTION			
<input checked="" type="checkbox"/> Notice of Intent	<input type="checkbox"/> Acidize	<input type="checkbox"/> Deepen	<input type="checkbox"/> Production (Start/Resume)	<input type="checkbox"/> Water Shut-Off
<input type="checkbox"/> Subsequent Report	<input type="checkbox"/> Alter Casing	<input type="checkbox"/> Fracture Treat	<input type="checkbox"/> Reclamation	<input type="checkbox"/> Well Integrity
<input type="checkbox"/> Final Abandonment Notice	<input type="checkbox"/> Casing Repair	<input type="checkbox"/> New Construction	<input type="checkbox"/> Recomplete	<input type="checkbox"/> Other
	<input type="checkbox"/> Change Plans	<input checked="" type="checkbox"/> Plug and Abandon	<input type="checkbox"/> Temporarily Abandon	
	<input type="checkbox"/> Convert to Injection	<input type="checkbox"/> Plug Back	<input type="checkbox"/> Water Disposal	

13. Describe Proposed or Completed Operation (clearly state all pertinent details, including estimated starting date of any proposed work and approximate duration thereof. If the proposal is to deepen directionally or recompleat horizontally, give subsurface locations and measured and true vertical depths of all pertinent markers and zones. Attach the Bond under which the work will be performed or provide the Bond No. on file with BLM/BIA. Required subsequent reports shall be filed within 30 days following completion of the involved operations. If the operation results in a multiple completion or recompleat in a new interval, a Form 3160-4 shall be filed once testing has been completed. Final Abandonment Notices shall be filed only after all requirements, including reclamation, have been completed, and the operator has determined that the site is ready for final inspection.)

## Casings

8 5/8", 675', cmt to surface  
7" 20#, 3399' cmt w/325 sx  
5 1/2", 17#, liner surface to 3277', Cmt to surface, circ 25 sx to pit  
4 1/2" 9.5/10.5# liner 3272-3801', cmt w/100 sx

Salt Section: 582-1548'

Perforations: 2231-2337' (7")  
3127-3788'  
Open Hole 3399-3451'

**SUBJECT TO LIKE  
APPROVAL BY STATE****SEE ATTACHED FOR  
CONDITIONS OF APPROVAL**

CIRP set at 3105'  
WGS set without BLM  
approval.

14. I hereby certify that the foregoing is true and correct.

Electronic Submission #57122 verified by the BLM Well Information System  
For FOREST OIL CORPORATION, sent to the Carlsbad**Accepted for record  
NMOCD**

Name (Printed/Typed) CINDY A BUSH

Title SR. REGULATORY TECH

Signature (Electronic Submission)

Date 11/13/2007

**THIS SPACE FOR FEDERAL OR STATE OFFICE USE**

Approved By

Title

Conditions of approval, if any, are attached. Approval of this notice does not warrant or certify that the applicant holds legal or equitable title to those rights in the subject lease which would entitle the applicant to conduct operations thereon.

Office

**APPROVED**

DEC 5 2007

Date

WESLEY W. INGRAM  
PETROLEUM ENGINEER

Title 18 U.S.C. Section 1001 and Title 43 U.S.C. Section 1212, make it a crime for any person knowingly and willfully to make to any department or agency of the United States any false, fictitious or fraudulent statements or representations as to any matter within its jurisdiction.

**\*\* OPERATOR-SUBMITTED \*\* OPERATOR-SUBMITTED \*\* OPERATOR-SUBMITTED \*\***

**Additional data for EC transaction #57122 that would not fit on the form**

**32. Additional remarks, continued**

CIBP@ 3105'

Plugging Procedure:

Tag CIBP @ 3105' & spot 25 sx c,t  
Circ hole with mud laden fluid.  
Spot 25 sx plug from 1550-1650'  
Perf Csg @ 725'  
Squeeze 125 sx & leave 100' inside 5 1/2" csg.  
WOC 4 hrs & tag  
Spot 10 sx from 60' to surface  
Cut off wellhead & set Dry Hole Marker.

**Accepted for record  
NMOCD**

**Skelly #54**

Sec. 22, 17S, 31E  
1,980' FSL & 660' FWL  
Skelly Field  
Eddy County, NM

**Forest Oil Corporation**

API #30-015-05351

12/3/2007

JWR

**Existing Wellbore Diagram**

Spud Date: 09/05/1958.

Elev. GL @ 3,823'.  
Elev. DF @ 3,828'.

**Surface Casing**

8-5/8", 22.7#, Armco SWSJ csg, set @ 675' KB.  
Cmtd w/ Halliburton Pump & Plug, 150 sx, circ cmt to surface.  
(10" Hole). 675'

**Production Casing**

7", SR 20#, SS J-55 csg., set @ 3,399' KB.  
Cmtd w/ Halliburton 325 sx.

**Interval Casing**

5 1/2" 17# liner surface to 3,277'.

HES pumped 285 sxs Class C

4 1/2" 9.5# & 10.5# liner from 3,272' - 3,801'  
100 sx cement  
(6 1/4" Hole)

**Tubing**

2 3/8" IPC tbg.

**Perforation Intervals**

Grayburg Vacuum:

3,127', 39', 52', 88', 3,202', 29', 36', 51', 65', 74', 98'

3,311', 20', 30', 39', 48',

3,364', 81', 3,364', 81'

3,400', 14', 22', 51', 52', 61', 62', 78', 79', 83', 84', 85'

3,127' - 3,801'  
(1 SPF)

*Casing measurements  
can't be accurate,*

*Perforations in 7" Nov 1974  
2231 - 2294*

*Not existing  
CIBP already in  
@ 3105'*

- Packer set @ 3,112'

- Grayburg Vacuum @ 3,127' - 3,485' KB (Gross).

- Set 4 1/2" CIBP @ 3,297' on 06/20/1996

- Liner 3,127' - 3,801'

*3272 - 3801*

- PBTD 3,801'

- TD @ 3,802' KB.

**Accepted for record  
NMOCD**

**Skelly #54**

Sec. 22, 17S, 31E  
 1,980' FSL & 660' FWL  
 Skelly Field  
 Eddy County, NM

Elev. GL @ 3,823'.  
 Elev. DF @ 3,828'.

**Surface Casing**

8-5/8", 22.7#, Armco SWSJ csg, set @ 675' KB.  
 Cmted w/ Halliburton Pump & Plug, 150 sx, circ cmt to surface.  
 (10" Hole).

**Production Casing**

7", SR 20#, SS J-55 csg., set @ 3,399' KB.  
 Cmted w/ Halliburton 325 sx.

**Interval Casing**

5 1/2" 17# liner surface to 3,277'.  
 HES pumped 285 sxs Class C

4 1/2" 9.5# & 10.5# liner from 3,272' - 3,801'  
 100 sx cement  
 (6 1/4" Hole)

**Tubing**

2 3/8" IPC tbg.

**Perforation Intervals**

Grayburg Vacuum:  
 3,127', 39', 52', 88', 3,202', 29', 36', 51', 65', 74', 98'  
 3,311', 20', 30', 39', 48',  
 3,364', 81', 3,364', 81'  
 3,400', 14', 22', 51', 52', 61', 62', 78', 79', 83', 84', 85'

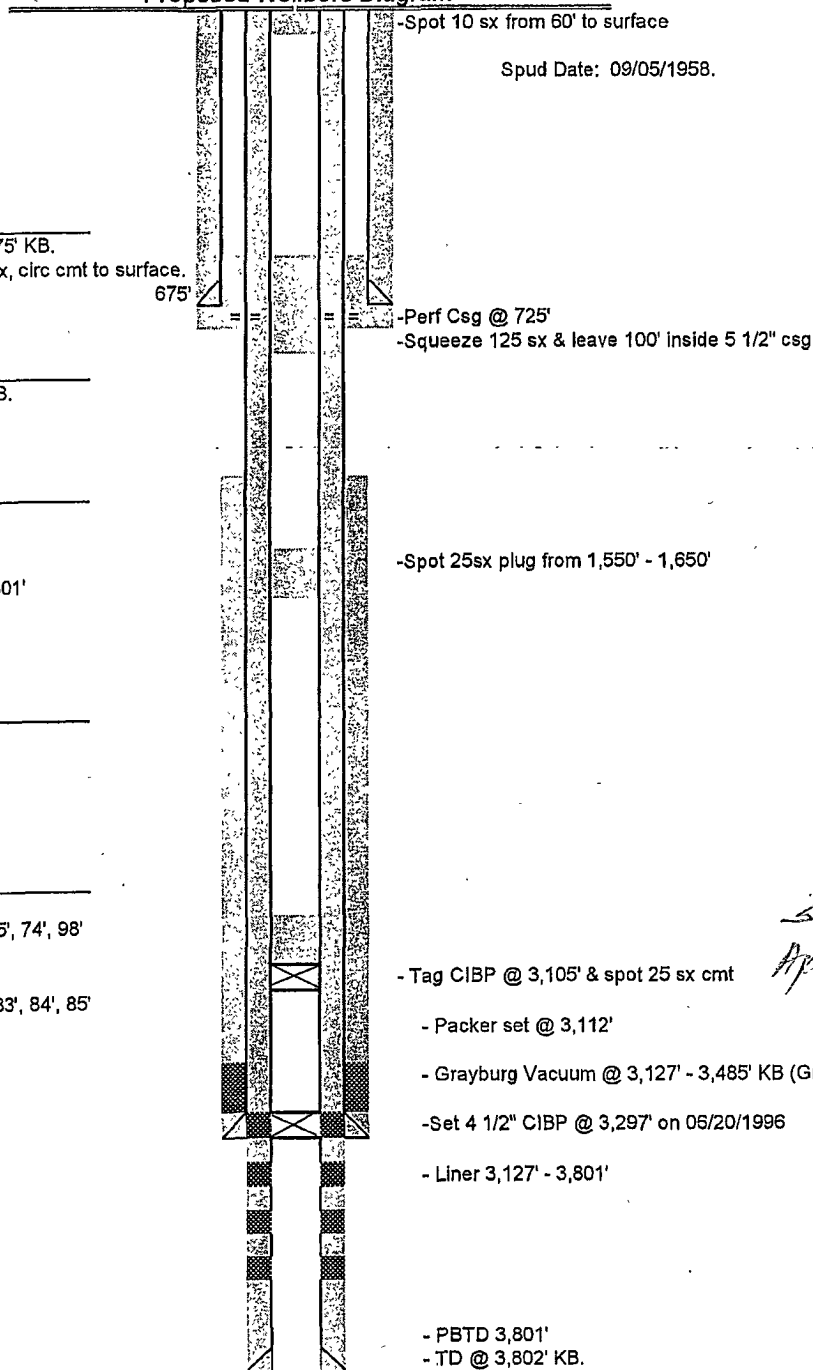
3,127' - 3,801'  
 (1 SPF)

**Forest Oil Corporation**

API #30-015-05351

12/3/2007

JWR

**Proposed Wellbore Diagram**

*Set*  
*Apr 2 18, 2007*

**Accepted for record**  
**NMOCD**

**Skelly Unit 54  
Forest Oil Corporation  
December 5, 2007  
Plug and Abandonment Procedure  
Conditions of Approval**

- 1. CIBP set at 3105' was set without BLM approval. CIBP at 3297' should have had cement placed on top of it. Reminder – an injection well that penetrates federal minerals must have all proposed work approved by the BLM.**
- 2. No records found on surface casing, but calculation indicates 100% excess. When wellhead is removed, verify that cement is at surface.**
- 3. Tag CIBP at 3105' and spot 25 sacks of cement.**
- 4. Circulate hole with mud laden fluid – minimum 9 ppg (see COA).**
- 5. Perforate at 1600' and attempt to squeeze a minimum of 25 sacks. If not possible to squeeze, set 25 sack plug in the casing. Plug to be tagged at 1490' or shallower. Base of Salt.**
- 6. Perforate at 725'. Attempt to establish circulation to surface. If possible, pump cement to surface. Otherwise pump proposed 125 sacks. WOC 4 hours and tag plug at 530' or shallower. Top of Salt.**
- 7. If cement not circulated to surface, casing to be perforated at 60', cement circulated to surface and casing filled.**

**WWI 120507**

**Accepted for record  
NMOCD**

**BUREAU OF LAND MANAGEMENT  
Carlsbad Field Office  
620 East Greene Street  
Carlsbad, New Mexico 88220  
575-234-5972**

**Permanent Abandonment of Federal Wells  
Conditions of Approval**

Failure to comply with the following Conditions of Approval may result in a Notice of Incidents of Noncompliance (INC) in accordance with 43 CFR 3163.1.

1. Plugging operations shall commence within ninety (90) days from the approval date of this Notice of Intent to Abandon.

**If you are unable to plug the well by the 90<sup>th</sup> day provide this office, prior to the 90<sup>th</sup> day, with the reason for not meeting the deadline and a date when we can expect the well to be plugged. Failure to do so will result in enforcement action.**

2. **Notification:** Contact the appropriate BLM office at least 24 hours prior to the commencing of any plugging operations. For wells in Chaves and Roosevelt County, call 575-627-0272; Eddy County, call 575-361-2822; Lea County, call 575-393-3612.

3. **Blowout Preventers:** A blowout preventer (BOP), as appropriate, shall be installed before commencing any plugging operation. The minimum BOP requirement is a 2M system for a well not deeper than 9,090 feet; a 3M system for a well not deeper than 13,636 feet; and a 5M system for a well not deeper than 22,727 feet.

4. **Mud Requirement:** Mud shall be placed between all plugs. Minimum consistency of plugging mud shall be obtained by mixing at the rate of 25 sacks (50 pounds each) of gel per 100 barrels of water. Minimum nine (9) pounds per gallon.

5. **Cement Requirement:** Sufficient cement shall be used to bring any required plug to the specified depth and length. Any given cement volumes on the proposed plugging procedure are merely estimates and are not final. Unless specific approval is received, no plug except the surface plug shall be less than 25 sacks of cement. In lieu of a cement plug in a cased hole, a bridge plug set within 50 feet to 100 feet above the perforations shall be capped with 25 sacks of cement. If a bailer is used to cap this plug, 35 feet of cement shall be sufficient.

Unless otherwise specified in the approved procedure, the cement plug shall consist of either Neat Class "C", for up to 7,500 feet of depth or Neat Class "H", for deeper than 7,500 feet plugs.

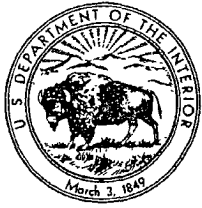
6. **Dry Hole Marker:** All casing shall be cut-off at the base of the cellar or 3 feet below final restored ground level (whichever is deeper). The well bore shall then be capped with a 4-inch pipe, 10-feet in length, 4 feet above ground and embedded in cement. The following information shall be permanently inscribed on the dry hole marker: well name and number, name of the operator, lease serial number, surveyed location (quarter-quarter section, section, township and range or other authorized survey designation acceptable to the authorized officer such as metes and bounds).

7. **Subsequent Plugging Reporting:** Within 30 days after plugging work is completed, file one original and five copies of the Subsequent Report of Abandonment, Form 3160-5 to BLM. The report should give in detail the manner in which the plugging work was carried out, the extent (by depths) of cement plugs placed, and the size and location (by depths) of casing left in the well. **Show date well was plugged.**

8. **Trash:** All trash, junk and other waste material shall be contained in trash cages or bins to prevent scattering and will be removed and deposited in an approved sanitary landfill. Burial on site is not permitted.

Following the submission and approval of the Subsequent Report of Abandonment, surface restoration conditions of approval will be developed and furnished to you.

**Accepted for record  
NMOCD**



UNITED STATES DEPARTMENT OF THE INTERIOR  
BUREAU OF LAND MANAGEMENT

Carlsbad Field Office  
620 E. Greene St.  
Carlsbad, NM 88220

**Interim Reclamation Procedures for Permanently Abandoned Federal Wells**

1. After Subsequent Report of Abandonment, Form 3160-5, is filed and approved by the BLM the surface protection specialist (SPS) will conduct a surface inspection of the abandonment. The SPS will establish the reclamation requirements the operator will need to complete. **DO NOT START RECLAMATION UNTIL THE SPS HAS INSPECTED THE LOCATION.**

2. The reclamation requirements will be given to an environmental protection specialist (EPS). The EPS will issue the operator a Notice of Written Order outlining the reclamation requirements. **DO NOT START RECLAMATION UNTIL A NOTICE OF WRITTEN ORDER FOR RECLAMATION HAS BEEN RECEIVED.** The EPS will be responsible for all further abandonment work and inspections.

3. **Notification: CONTACT THE EPS 3 DAYS PRIOR TO RECLAMATION WORK.** This notification gives the EPS an opportunity to discuss by phone or on location the reclamation requirements, any special concerns and the timeframes. It also allows the EPS an opportunity to witness various aspects of the reclamation work to determine if an adequate seedbed has been prepared and all reclamation requirements have been completed. **CONTACT THE EPS AT LEAST 3 DAYS PRIOR TO SEEDING.** This allows the EPS to witness the seeding operation to make sure the location is seeded properly and with the appropriate seed mixture. **DO NOT START RECLAMATION UNTIL THE EPS HAS BEEN NOTIFIED.**

4. After reclamation work has been completed, submit the **I & E copy of the Notice of Written Order** to the BLM. It will need to be signed by a company representative and dated. Also submit one original and five copies of the **Final Abandonment Notice, Form 3160-5.** The report should state that all reclamation work has been completed, and the location is ready for a final abandonment inspection.

5. The BLM will continue to monitor the location to ensure the location vegetates successfully, and salts from the reserve pit do not leach to the surface. The location will be monitored until such time as vegetation (20%) is established evenly across the location (including the reserve pit and access road). Once EPS determines that vegetation (20%) is evenly spread across the location, final abandonment will be authorized.

If there are any questions please feel free to contact any of the following:

Jim Amos  
Supervisory Environmental Protection Specialist  
(575) 234-5909

Barry Hunt  
Surface Protection Specialist  
(575) 234-5965

Todd Suter  
Surface Protection Specialist  
(575) 234-5987

Trishia Bad Bear  
Natural Resource Specialist – Lea County  
(575) 393-3612

Cody Layton  
Natural Resource Specialist  
(575) 234-5959

Paul Evans  
Environmental Protection Specialist  
(575) 234-5977

Terry Gregston  
Environmental Protection Specialist  
(575) 234-5958

Accepted for record  
NMOCD

10/18/2006