

District I  
1625 N. French Dr., Hobbs, NM 88240  
District II  
1301 W. Grand Avenue, Artesia, NM 88210  
District III  
1000 Rio Brazos Road, Aztec, NM 87410  
District IV  
1220 S. St. Francis Dr., Santa Fe, NM 87505

State of New Mexico  
Energy Minerals and Natural Resources



Form C-101  
May 27, 2004

Oil Conservation Division  
1220 South St. Francis Dr.  
Santa Fe, NM 87505

Submit to appropriate District Office

☐ AMENDED REPORT

**APPLICATION FOR PERMIT TO DRILL, RE-ENTER, DEEPEN, PLUGBACK, OR ADD A ZONE**

<sup>1</sup> Operator Name and Address Tandem Energy Corporation P.O. Box 1559 Midland, Texas 79702-1559		NOV 15 2007 OCD-ARTESIA		<sup>2</sup> OGRID Number 236183
<sup>3</sup> Property Code 302004	<sup>3</sup> Property Name Ballard Grayburg San Andres Unit			<sup>4</sup> API Number 30-015-35929
<sup>5</sup> Proposed Pool 1 Loco Hills Queen-Grayburg-San Andres ("Metex & Premier") (39520)			<sup>6</sup> Well No 265	

**7 Surface Location**

UL or lot no M	Section 4	Township 18-S	Range 29-E	Lot Idn	Feet from the 511	North/South line South	Feet from the 397	East/West line West	County Eddy
-------------------	--------------	------------------	---------------	---------	----------------------	---------------------------	----------------------	------------------------	----------------

**8 Proposed Bottom Hole Location If Different From Surface**

UL or lot no	Section	Township	Range	Lot Idn	Feet from the	North/South line	Feet from the	East/West line	County
--------------	---------	----------	-------	---------	---------------	------------------	---------------	----------------	--------

**Additional Well Information**

<sup>11</sup> Work Type Code N	<sup>12</sup> Well Type Code O	<sup>13</sup> Cable/Rotary R	<sup>14</sup> Lease Type Code P	<sup>15</sup> Ground Level Elevation 3535'
<sup>16</sup> Multiple No	<sup>17</sup> Proposed Depth 3400'	<sup>18</sup> Formation San Andres	<sup>19</sup> Contractor Mixon Drilling, Inc.	<sup>20</sup> Spud Date ASAP
Depth to Groundwater 100'		Distance from nearest fresh water well 1/2 mile		Distance from nearest surface water 3 miles
Pit: Liner: Synthetic <input checked="" type="checkbox"/> 12 mils thick Clay <input type="checkbox"/> Pit Volume: 300 bbls Drilling Method: Fresh Water <input type="checkbox"/> Brine <input checked="" type="checkbox"/> Diesel/Oil-based <input type="checkbox"/> Gas/Air <input type="checkbox"/>				
Closed-Loop System <input type="checkbox"/>				

**21 Proposed Casing and Cement Program**

Hole Size	Casing Size	Casing weight/foot	Setting Depth	Sacks of Cement	Estimated TOC
12 1/4"	8 5/8"	24#	360'	165	Surface
7 7/8"	5 1/2"	17#	3400'	700	Surface

<sup>22</sup> Describe the proposed program. If this application is to DEEPEN or PLUG BACK, give the data on the present productive zone and proposed new productive zone. Describe the blowout prevention program, if any. Use additional sheets if necessary.

Drill 12 1/4" hole to 360' with fresh water. Set 8 5/8" 24# casing at 360' and cement to surface with 165 sacks class "C" + 2% CaCl<sub>2</sub>. Drill out with 9.4+ppg saltwater to total depth at 3400'. Log open hole. Run 5 1/2" 17# casing to total depth and cement to surface with Approx. 425 sacks 35/65 class "C" + 5 % salt and 50/50 class "C" + 5 % salt.

<sup>23</sup> I hereby certify that the information given above is true and complete to the best of my knowledge and belief. I further certify that the drilling pit will be constructed according to NMOCD guidelines ☒, a general permit ☐, or an (attached) alternative OCD-approved plan ☐.

Signature: *Carol A. Cook*

Printed name: Carol A. Cook

Title: Administrative Assistant

E-mail Address: ccook@tandem-energy.com

Date: 11-13-2007

Phone: (432) 686-7136

**OIL CONSERVATION DIVISION**

Approved by:

**BRYAN G. ARANT**

Title:

**DISTRICT II GEOLOGIST**

Approval Date:

**NOV 26 2007**

Expiration Date:

**NOV 26 2008**

Conditions of Approval Attached ☐

District I  
1625 N. French Dr., Hobbs, NM 88240  
District II  
1301 W. Grand Avenue, Artesia, NM 88210  
District III  
1000 Rio Brazos Rd., Aztec, NM 87410  
District IV  
1220 S. St. Francis Dr., Santa Fe, NM 87505

State of New Mexico  
Energy, Minerals & Natural Resources Department  
OIL CONSERVATION DIVISION  
1220 South St. Francis Dr.  
Santa Fe, NM 87505

Form C-102  
Revised October 12, 2005  
Submit to Appropriate District Office  
State Lease- 4 Copies  
Fee Lease- 3 Copies  
☐ AMENDED REPORT

WELL LOCATION AND ACREAGE DEDICATION PLAT

API Number	Pool Code	Pool Name
Property Code	Property Name <b>BALLARD GRAYBURG - SAN ANDRES UNIT</b>	Well Number <b>265</b>
OGRID No.	Operator Name <b>TANDEM ENERGY CORPORATION</b>	Elevation <b>3535'</b>

Surface Location

UL or lot no.	Section	Township	Range	Lot Idn	Feet from the	North/South line	Feet from the	East/West line	County
<b>M</b>	<b>4</b>	<b>18 SOUTH</b>	<b>29 EAST, N.M.P.M.</b>		<b>511</b>	<b>SOUTH</b>	<b>397</b>	<b>WEST</b>	<b>EDDY</b>

Bottom Hole Location If Different From Surface

UL or lot no.	Section	Township	Range	Lot Idn	Feet from the	North/South line	Feet from the	East/West line	County
Dedicated Acres <b>40.0</b>		Joint or Infill	Consolidation Code	Order No.					

No allowable will be assigned to this completion until all interests have been consolidated or a non-standard unit has been approved by the division.

OPERATOR CERTIFICATION

I hereby certify that the information contained herein is true and complete to the best of my knowledge and belief, and that this organization either owns a working interest or unleased mineral interest in the land including the proposed bottom hole location or has a right to drill this well at this location pursuant to a contract with an owner of such a mineral or working interest, or to a voluntary pooling agreement or a compulsory pooling order heretofore entered by the division.

*Todd M. Yocham* 6/20/07  
Signature Date  
**Todd M. Yocham**  
Printed Name

SURVEYOR CERTIFICATION

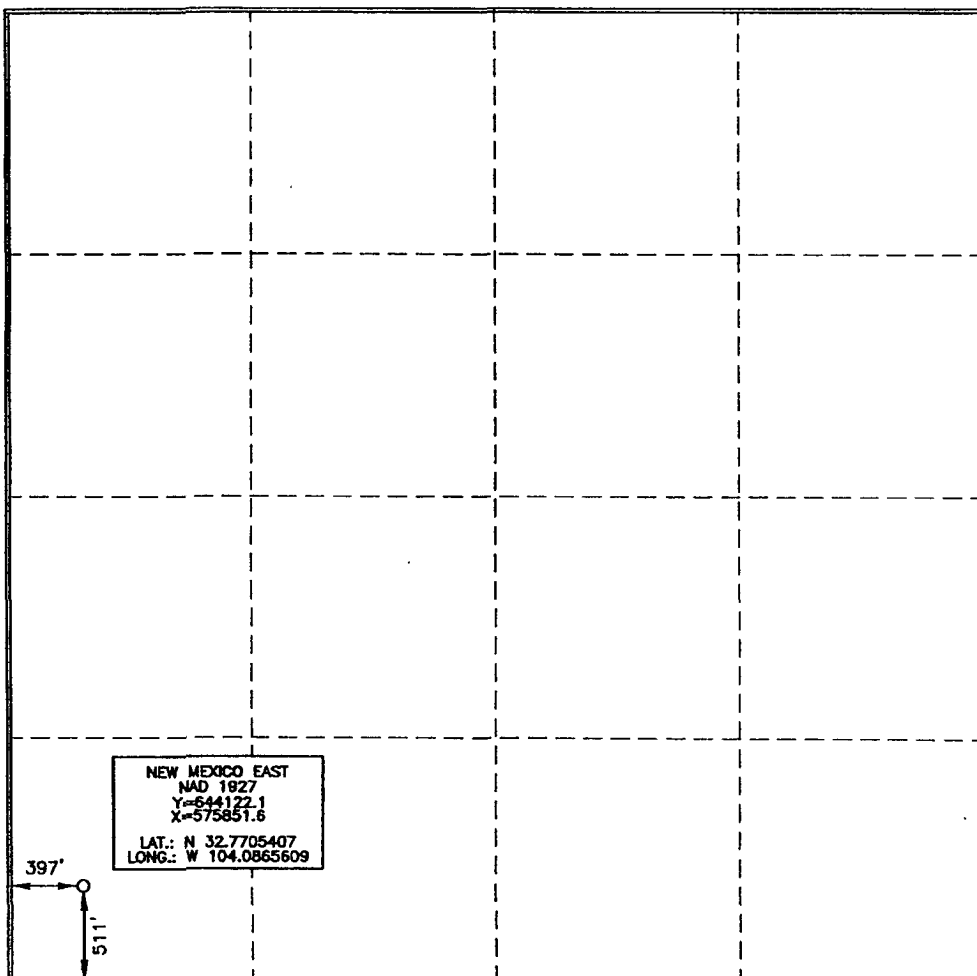
I hereby certify that the well location shown on this plat was plotted from field notes of actual surveys made by me or under my supervision, and that the same is true and correct to the best of my belief.

**JANUARY 10, 2006**  
Date of Survey

Signature and Seal of Professional Surveyor

*Terry J. Ouel* 1/21/2006  
Certificate Number 15079

WO# 060106WL-g (COG)



District I  
1625 N. French Dr., Hobbs, NM 88240  
District II  
1301 W. Grand Avenue, Artesia, NM 88210  
District III  
1000 Rio Brazos Rd., Aztec, NM 87410  
District IV  
1220 S. St. Francis Dr., Santa Fe, NM 87505

State of New Mexico  
Energy, Minerals & Natural Resources Department  
OIL CONSERVATION DIVISION  
1220 South St. Francis Dr.  
Santa Fe, NM 87505

Form C-102  
Revised October 12, 2005  
Submit to Appropriate District Office  
State Lease- 4 Copies  
Fee Lease- 3 Copies

☐ AMENDED REPORT

WELL LOCATION AND ACREAGE DEDICATION PLAT

API Number	Pool Code	Pool Name
Property Code	Property Name <b>BALLARD GRAYBURG - SAN ANDRES UNIT</b>	Well Number <b>265</b>
OGRID No.	Operator Name <b>TANDEM ENERGY CORPORATION</b>	Elevation <b>3535'</b>

Surface Location

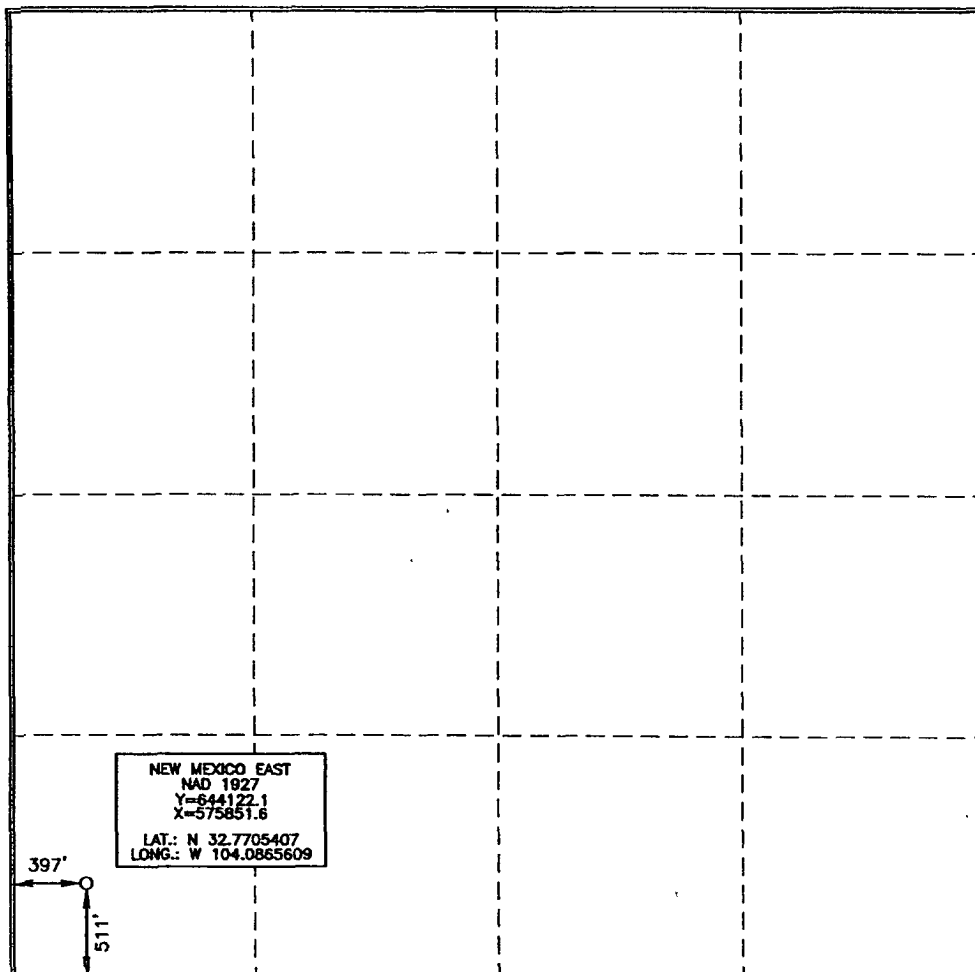
UL or lot no.	Section	Township	Range	Lot Idn	Feet from the	North/South line	Feet from the	East/West line	County
<b>M</b>	<b>4</b>	<b>18 SOUTH</b>	<b>29 EAST, N.M.P.M.</b>		<b>511</b>	<b>SOUTH</b>	<b>397</b>	<b>WEST</b>	<b>EDDY</b>

Bottom Hole Location If Different From Surface

UL or lot no.	Section	Township	Range	Lot Idn	Feet from the	North/South line	Feet from the	East/West line	County

Dedicated Acres	Joint or Infill	Consolidation Code	Order No.

No allowable will be assigned to this completion until all interests have been consolidated or a non-standard unit has been approved by the division.



OPERATOR CERTIFICATION

I hereby certify that the information contained herein is true and complete to the best of my knowledge and belief, and that this organization either owns a working interest or unleased mineral interest in the land including the proposed bottom hole location or has a right to drill this well at this location pursuant to a contract with an owner of such a mineral or working interest, or to a voluntary pooling agreement or a compulsory pooling order heretofore entered by the division.

*Todd M. Yocham* 6/20/07  
Signature Date

Todd M. Yocham  
Printed Name

SURVEYOR CERTIFICATION

I hereby certify that the well location shown on this plat was plotted from field notes of actual surveys made by me or under my supervision, and that the same is true and correct to the best of my belief.

*[Signature]* 15079  
JANUARY 10, 2006  
Date of Survey

Signature and Seal of Professional Surveyor

*Terry J. Asel* 1/21/2006  
Certificate Number 15079

WOP 080106WL-g (c06)