

District I
1625 N. French Dr., Hobbs, NM 88240
District II
1301 W. Grand Avenue, Artesia, NM 88210
District III
1000 Rio Brazos Road, Aztec, NM 87410
District IV
1220 S. St. Francis Dr., Santa Fe, NM 87505

State of New Mexico
Energy Minerals and Natural Resources

Form C-101
May 27, 2004

Oil Conservation Division
1220 South St. Francis Dr.
Santa Fe, NM 87505
JAN 16 2008
OCD-ARTESIA

Submit to appropriate District Office

☐ AMENDED REPORT
Permit renewal request

APPLICATION FOR PERMIT TO DRILL, RE-ENTER, DEEPEN, PLUGBACK, OR ADD A ZONE

¹ Operator Name and Address: Rubicon Oil and Gas, LLC 508 W. Wall, Suite 500, Midland, TX 79701		² OGRID Number: 194266
		³ API Number 30 - 015- 36047
⁴ Property Code	⁵ Property Name Lakewood 21	⁶ Well No. 2
⁹ Proposed Pool 1: Four Mile Draw (Morrow) 76960		¹⁰ Proposed Pool 2

⁷ Surface Location

UL or lot no	Section	Township	Range	Lot Idn	Feet from the	North/South line	Feet from the	East/West line	County
J	21	19S	26E		1980'	South	1800'	East	Eddy

⁸ Proposed Bottom Hole Location If Different From Surface

UL or lot no.	Section	Township	Range	Lot Idn	Feet from the	North/South line	Feet from the	East/West line	County

Additional Well Information

¹¹ Work Type Code New Well	¹² Well Type Code G	¹³ Cable/Rotary R	¹⁴ Lease Type Code Fee	¹⁵ Ground Level Elevation 3328.9'
¹⁶ Multiple No	¹⁷ Proposed Depth 9800'	¹⁸ Formation Morrow	¹⁹ Contractor TBD	²⁰ Spud Date 1-25-08
Depth to Groundwater: 90'		Distance from nearest fresh water well: approx 980'		Distance from nearest surface water: none
Pit: Liner: Synthetic X 12_mils thick Clay <input type="checkbox"/> Pit Volume: 5000_bbls Drilling Method:				
Closed-Loop System <input type="checkbox"/> Fresh Water X Brine Diesel Oil-based <input type="checkbox"/> Gas/Air <input type="checkbox"/>				

²¹ Proposed Casing and Cement Program

Hole Size	Casing Size	Casing weight/foot	Setting Depth	Sacks of Cement	Estimated TOC
17 1/2"	13 3/8"	48#	350'	390 sx	Surface
12 1/4"	9 5/8"	36#	1400'	650 sx	Surface
8 3/4"	5 1/2"	17#	9800'	1450 sx	1200'

²² Describe the proposed program. If this application is to DEEPEN or PLUG BACK, give the data on the present productive zone and proposed new productive zone. Describe the blowout prevention program, if any. Use additional sheets if necessary.

Mud Program: 0-350', MW 8.4-9 PPG FW native spud mud. 350-7500', MW 8.4-8.6 PPG FW, 7500-9800' MW 8.8-9.4 Cut Brine, KCD Polymer.

A 3000 psi hydraulic BOP will be utilized. Standard BOP diagram attached.

H2S - no H2S seen in immediate area. Will have minimum compliance package set up prior to drilling out of 9 5/8" casing.

H2S Contingency Plan required

Fresh Water Mud to 1400'.

²³ I hereby certify that the information given above is true and complete to the best of my knowledge and belief. I further certify that the drilling pit will be constructed according to NMOCD guidelines X, a general permit <input type="checkbox"/> , or an (attached) alternative OCD-approved plan <input type="checkbox"/> .		OIL CONSERVATION DIVISION	
Printed name: Ann E. Ritchie		Approved by: BRYAN G. ARANT	
Title: Regulatory Agent		Title: DISTRICT II GEOLOGIST	
E-mail Address: ann.ritchie@wtor.net		Approval Date: JAN 17 2008 Expiration Date: JAN 18 2010	
Date: 1-14-08		Conditions of Approval Attached <input checked="" type="checkbox"/> See Steps for approval to drill.	

DISTRICT I

1625 N. FRENCH DR., HOBBS, NM 88240

DISTRICT II

1301 W. GRAND AVENUE, ARTESIA, NM 88210

DISTRICT III

1000 Rio Brazos Rd., Aztec, NM 87410

DISTRICT IV

1220 S. ST. FRANCIS DR., SANTA FE, NM 87505

State of New Mexico

Energy, Minerals and Natural Resources Department

OIL CONSERVATION DIVISION

1220 SOUTH ST. FRANCIS DR.
Santa Fe, New Mexico 87505

Form C-102

Revised October 12, 2005

Submit to Appropriate District Office

State Lease - 4 Copies

Fee Lease - 3 Copies

WELL LOCATION AND ACREAGE DEDICATION PLAT

☐ AMENDED REPORT

API Number 30-015-	Pool Code 76960	Pool Name Four Mile Draw (Morrow)
Property Code 36955	Property Name LAKEWOOD 21	Well Number 2
OGRID No. 194266	Operator Name RUBICON OIL AND GAS, LLC	Elevation 3329'

Surface Location

UL or lot No.	Section	Township	Range	Lot Idn	Feet from the	North/South line	Feet from the	East/West line	County
J	21	19-S	26-E		1980	SOUTH	1800	EAST	EDDY

Bottom Hole Location If Different From Surface

UL or lot No.	Section	Township	Range	Lot Idn	Feet from the	North/South line	Feet from the	East/West line	County

Dedicated Acres	Joint or Infill	Consolidation Code	Order No.
320			

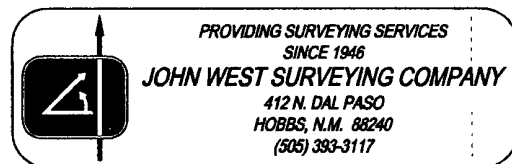
NO ALLOWABLE WILL BE ASSIGNED TO THIS COMPLETION UNTIL ALL INTERESTS HAVE BEEN CONSOLIDATED
OR A NON-STANDARD UNIT HAS BEEN APPROVED BY THE DIVISION

<p>GEODETIC COORDINATES NAD 27 NME</p> <p>Y=597986.7 N X=484562.2 E</p> <p>LAT.=32.643958° N LONG.=104.383487° W</p> <p>Dimensions: 3330.3', 3328.6', 600', 1800', 3325.7', 3323.2', 1980'</p>	<p>OPERATOR CERTIFICATION</p> <p>I hereby certify that the information herein is true and complete to the best of my knowledge and belief, and that this organization either owns a working interest or unleased mineral interest in the land including the proposed bottom hole location or has a right to drill this well at this location pursuant to a contract with an owner of such mineral or working interest, or to a voluntary pooling agreement or a compulsory pooling order heretofore entered by the division.</p> <p>Signature: <i>HAL FOS</i> Date: <i>10/18/2007</i></p> <p>Printed Name: <i>HAL LEE AGENT/OPS MGR</i></p> <hr/> <p>SURVEYOR CERTIFICATION</p> <p>I hereby certify that the well location shown on this plat was plotted from field notes of actual surveys made by me or under my supervision, and that the same is true and correct to the best of my belief.</p> <p>Date Surveyed: <i>10/17/07</i> LA</p> <p>Signature and Seal of Professional Surveyor: <i>Ronald J. Eidson</i></p> <p>Certificate No. <i>3239</i></p> <p><i>RONALD J. EIDSON</i> 12641</p>
--	---

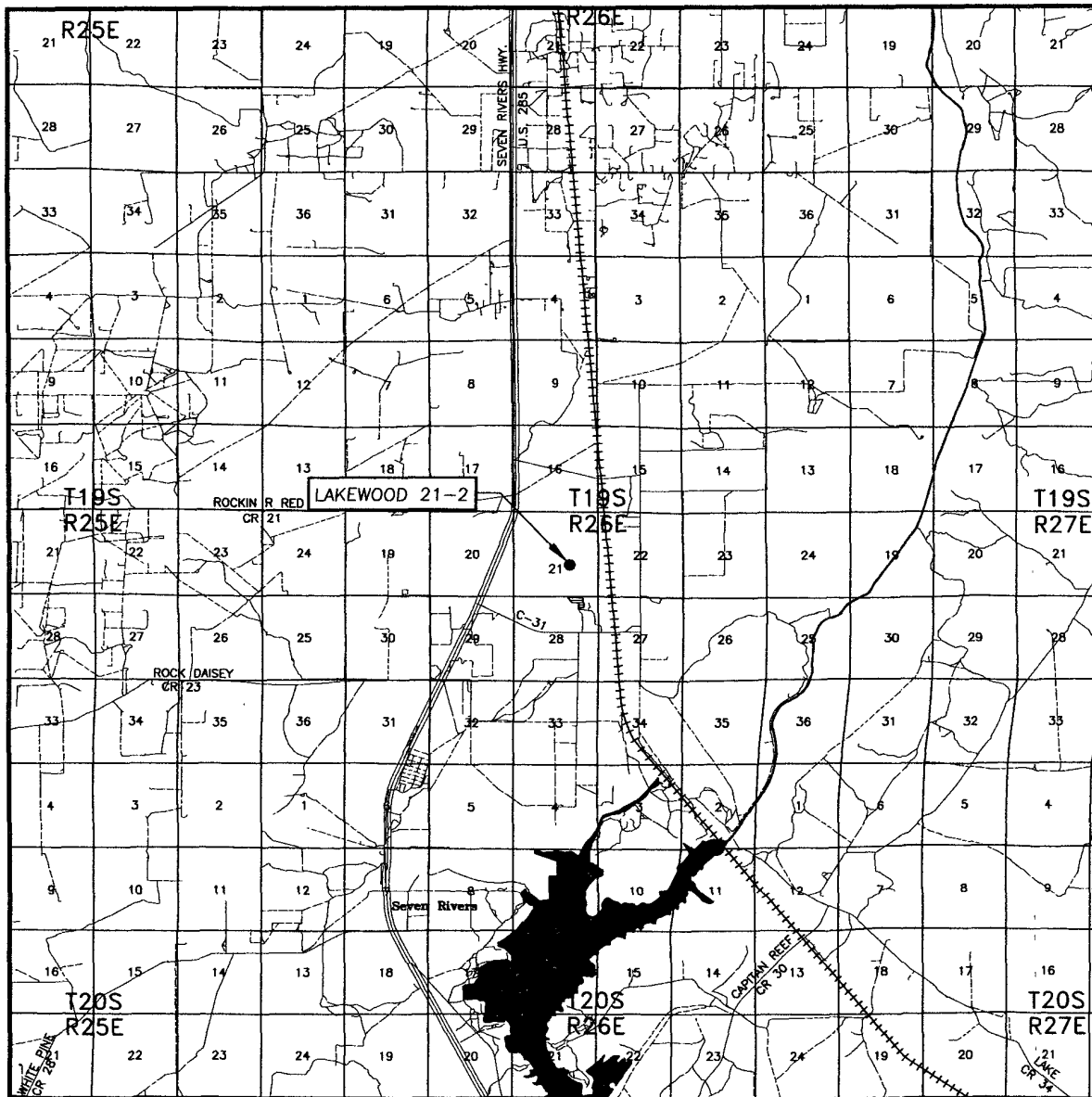
Topographic map of the Lakewood area, showing proposed road construction. The map includes contour lines, spot elevations, and labels for various features. A dashed line indicates the proposed road, with a callout box stating "2810' OF PROPOSED ROAD". Other labels include "U.S. HWY. #285", "SEVEN RIVERS HWY.", "CO. RD. #31", "LAKEWOOD RD.", "North", "Cotton", "Rivers", "Windmill", "BM", "Lakewood", and "LEVÉE". The map is divided into sections numbered 15, 16, 17, 20, 21, 22, 27, 28, and 29.

CONTOUR INTERVAL:
DAYTON, N.M. - 10'
LAKE MCMILLAN- NORTH, N.M. - 10'

U.S.G.S. TOPOGRAPHIC MAP
DAYTON, N.M.

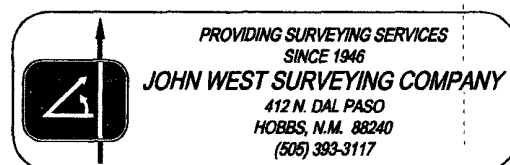


VICINITY MAP

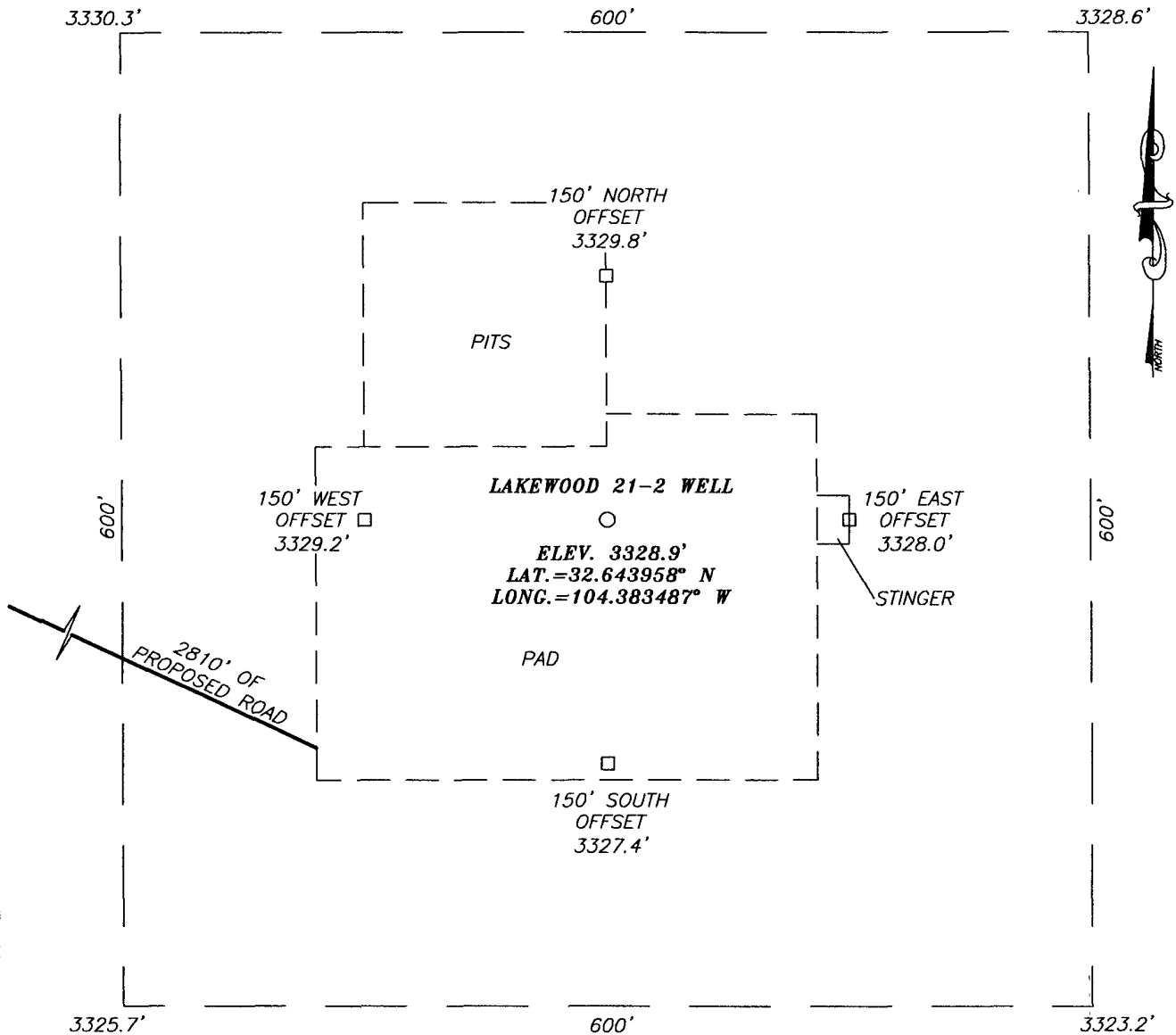


SCALE: 1" = 2 MILES

SEC. 21 TWP. 19-S RGE. 26-E
 SURVEY N.M.P.M.
 COUNTY EDDY STATE NEW MEXICO
 DESCRIPTION 1980' FSL & 1800' FEL
 ELEVATION 3329'
 OPERATOR RUBICON OIL AND GAS, LLC
 LEASE LAKEWOOD

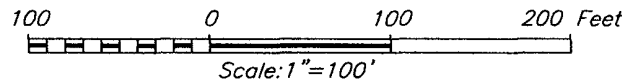


SECTION 21, TOWNSHIP 19 SOUTH, RANGE 26 EAST, N.M.P.M.,
 EDDY COUNTY, NEW MEXICO



DIRECTIONS TO LOCATION

FROM THE INTERSECTION OF U.S. HWY. #285
 (SEVEN RIVERS HWY.) AND CO. RD. #31
 (LAKEWOOD ROAD), GO NORTHEAST ON HWY. #285
 APPROX. 1.1 MILES. TURN RIGHT AND GO EAST
 APPROX. 0.1 MILE. TURN RIGHT ON RANCH ROAD
 AND GO SOUTHEAST APPROX. 0.3 MILES TO A
 PROPOSED ROAD SURVEY. FOLLOW ROAD SURVEY
 SOUTHEAST APPROX. 2810 FEET TO THIS
 LOCATION.



RUBICON OIL AND GAS, LLC

LAKEWOOD 21-2 WELL
 LOCATED 1980 FEET FROM THE SOUTH LINE
 AND 1800 FEET FROM THE EAST LINE OF SECTION 21,
 TOWNSHIP 19 SOUTH, RANGE 26 EAST, N.M.P.M.,
 EDDY COUNTY, NEW MEXICO.

Survey Date: 10/10/07	Sheet 1 of 1 Sheets
W.O. Number: 07.11.1388	Dr By: LA
Date: 10/17/07	Disk: 07111388
	Scale: 1"=100'



PROVIDING SURVEYING SERVICES
 SINCE 1946
JOHN WEST SURVEYING COMPANY
 412 N. DAL PASO
 HOBBS, N.M. 88240
 (505) 393-3117

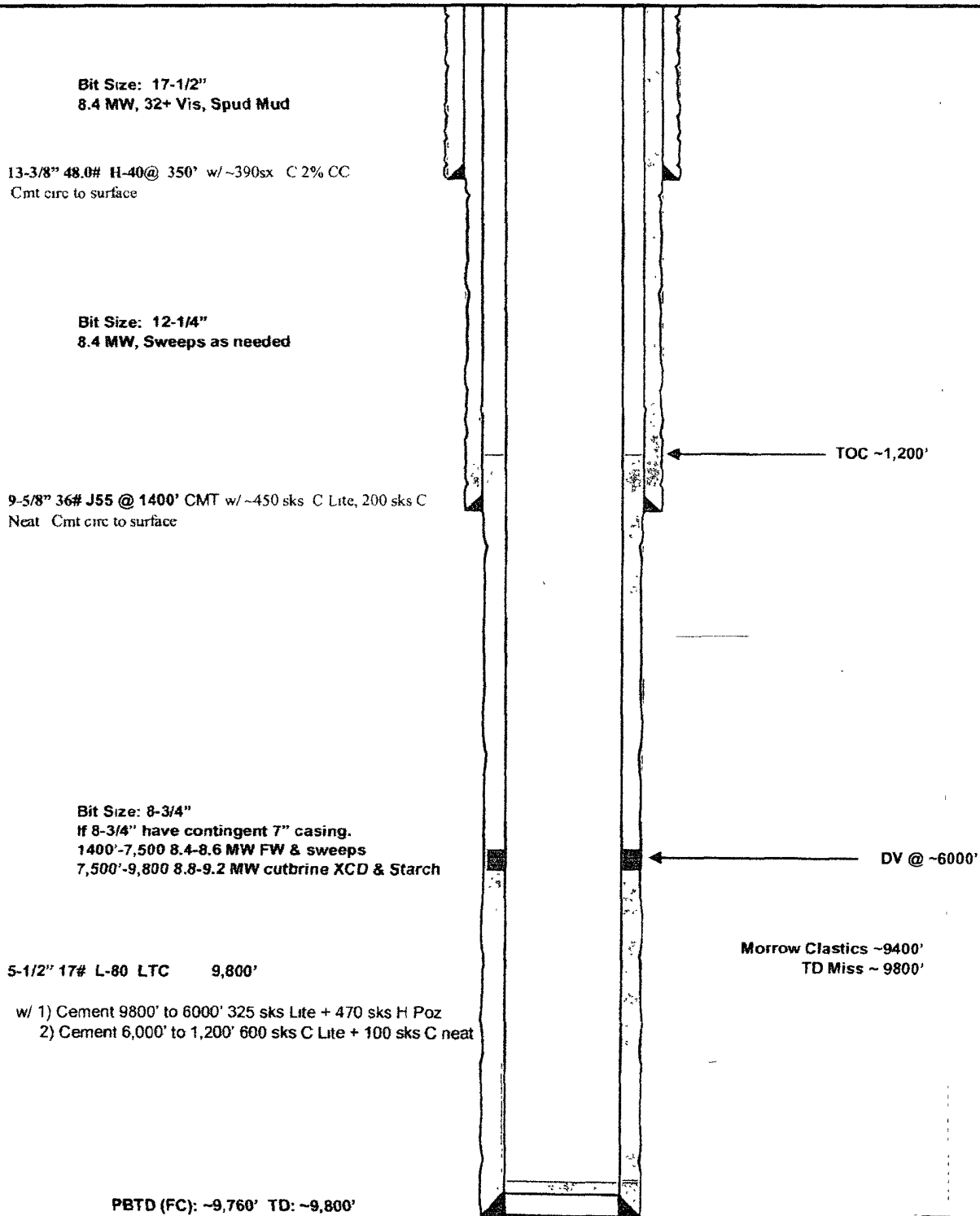
Rubicon Oil & Gas, LLC
Lakewood Prospect

KB: NA'

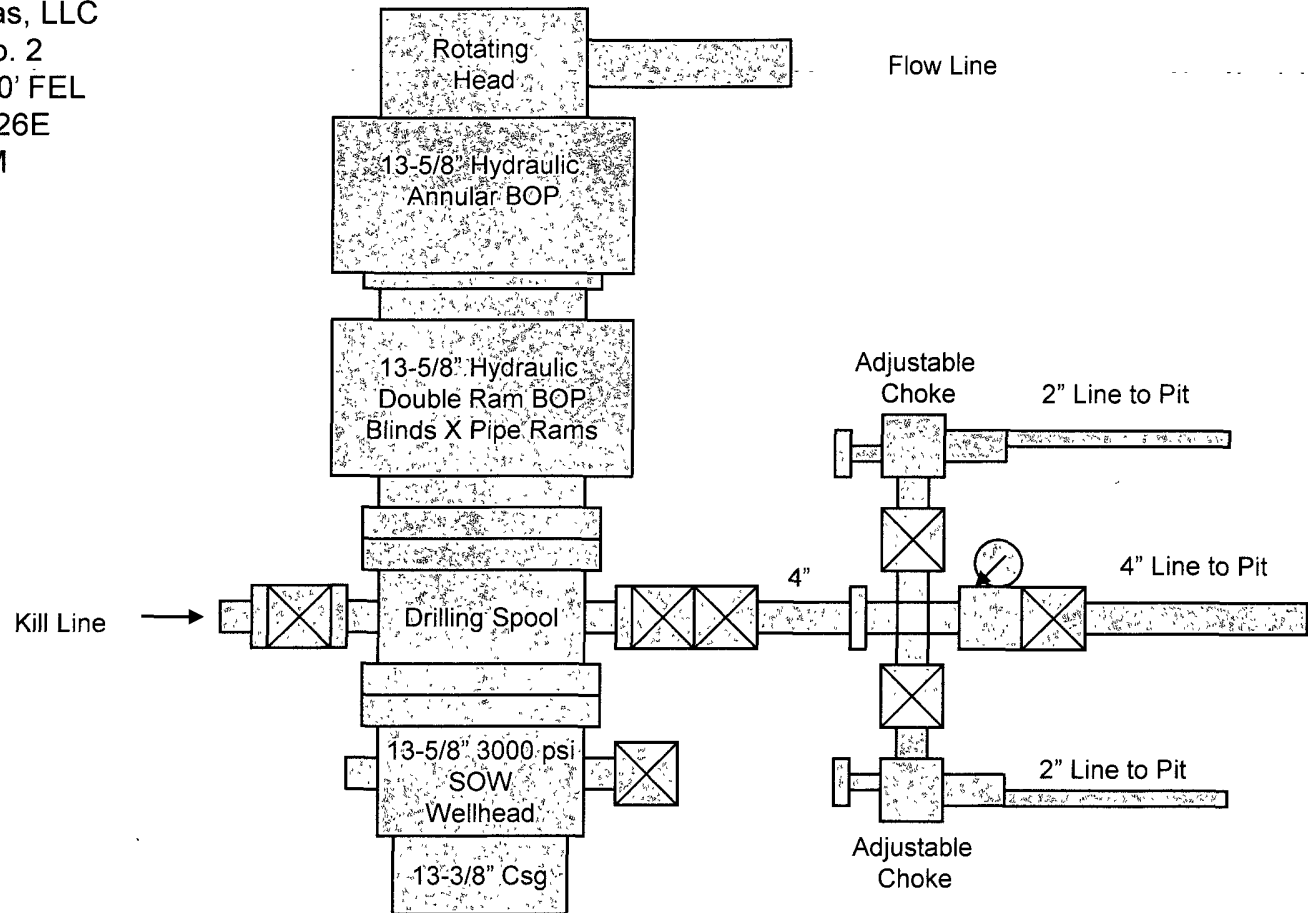
Lakewood 21 -
Eddy County, New Mexico
Proposed Wellbore

Sec. 21, T19S, R26E,
Eddy County, NM

TD'd: NA



Rubicon Oil & Gas, LLC
Lakewood 21 No. 2
1980' FSL & 1800' FEL
Sec 21, T19S, R26E
Eddy County, NM



3000 psi Working Pressure
BOPE Configuration
And Choke Manifold

Exhibit "____"

Arrant, Bryan, EMNRD

From: Arrant, Bryan, EMNRD
Sent: Thursday, January 17, 2008 8:50 AM
To: 'Ann Ritchie'
Subject: Lakewood 21 # 2

Dear Ann,
Please submit a h2s contingency plan for this well as it is in close proximity to the community of Lakewood, NM.
Please insure that the contingency plan complies with NMOCD Rule 118.
In addition, please submit a drilling mud program for this application.

Yours truly

Bryan G. Arrant
District II Geologist
New Mexico Oil Conservation Division
1301 West Grand Ave.
Artesia, NM 88210
505-748-1283 Ext. 103

CC: Well file

1/17/2008

Oil Conservation Division

1-17-08

RE:Rubicon Oil and Gas, LLC, 508 W. Wall, Suite 500, Midland, TX 79701

Lakewood 21, Well #2, Application to Drill, Sec 21, T9S, R26E, 1980 FSL & 1800 FEL,
Eddy County, New Mexico – Mud Program Attachment

Mud Program:

0-350', MW 8.4-9 PPG FW native spud mud. 350-7500', MW 8.4-8.6 PPG FW, 7500-
9800' MW 8.8-9.4 Cut Brine, KCD Polymer.

A 3000 psi hydraulic BOP will be utilized. Diagram submitted with form C-101.

RUBICON OIL AND GAS, LLC
508 WEST WALL ST., SUITE 500
MIDLAND, TEXAS 79701

**Hydrogen Sulfide (H₂S)
Contingency Plan**

For

Lakewood 21, Well #2
Section 21, T9S, R26E
1980' FSL and 1800' FEL (J)
Eddy County, New Mexico

Table of Contents:

Items:

Preface

Location Map

Rig Sketch

Emergency Response Activation and General Responsibilities

Specific Emergency Guidance: H₂S Release and Well Control

Public Relations

Phone Contacts for all service representatives

Phone Contacts for emergency personnel

Phone Contacts for Rubicon personnel

Preface:

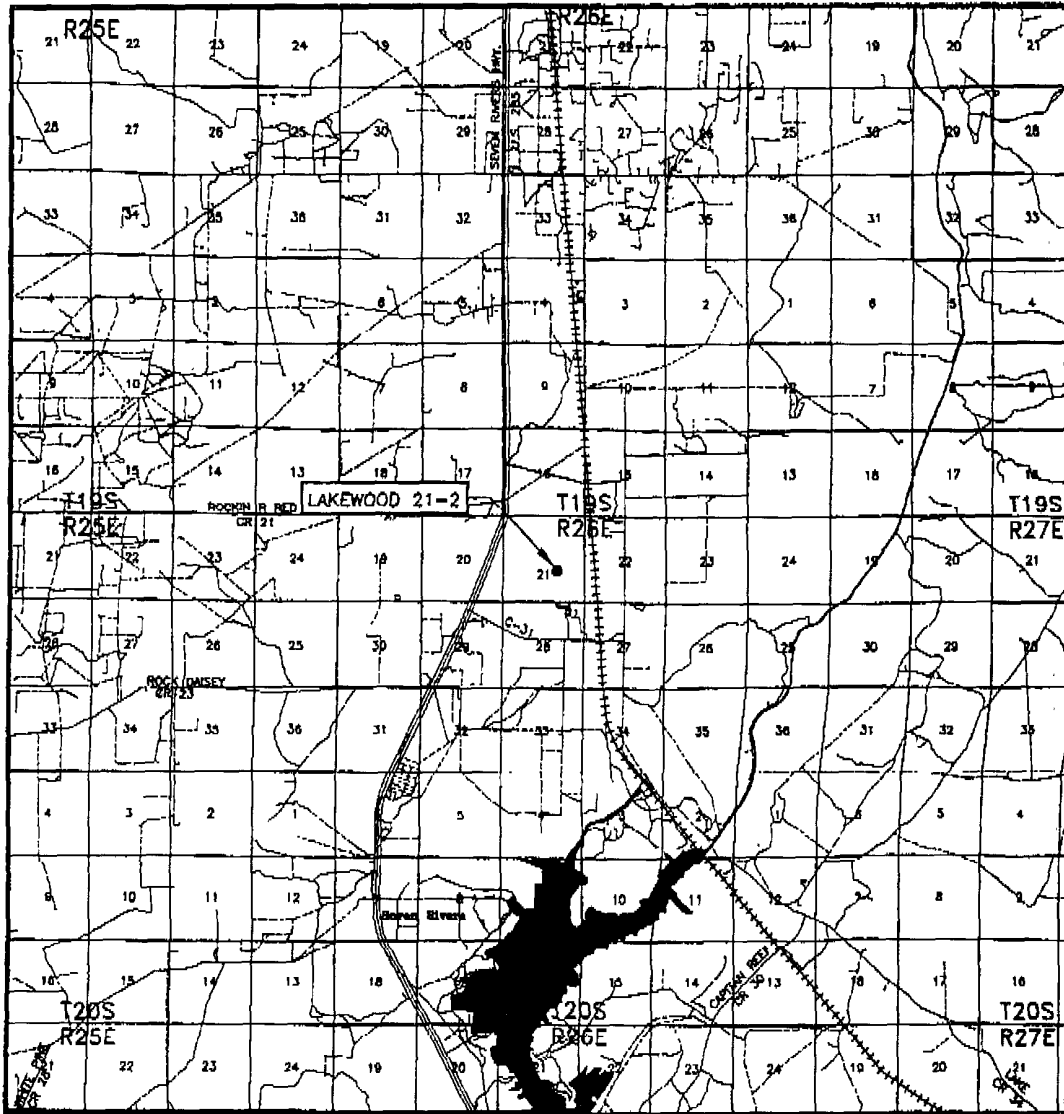
An effective and viable Contingency Plan is intended to provide prior planning and guidance in responding to emergency incidents. The primary considerations in its development is the protection of personnel, the public, company and public property, and the environment.

Although the plan addresses varied emergency situations which may occur, it recognizes that flexibility and the use of the operator, contractors and public service knowledge and experience is critical to safe resolution of emergency incidents. Response actions outlined in the plan provide a framework, which may be placed into operation without confusion. These actions should promote quick and decisive actions during the critical initial period and immediately following an emergency. As the response progresses, additional guidelines and procedures will occur to properly implement and address the emergency situation. All emergency incidents must be properly reported by Rubicon Oil and Gas, LLC policy, abiding by all state and federal agency requirements.

This Contingency Plan is intended for use on the Rubicon Oil and Gas, LLC (*Rub*) drilling, downhole and surface projects associated with the drilling and production of oil and/or gas, and the operations within their area of responsibility.

A copy of this Contingency Plan is to be maintained in the drilling dog house, rig managers trailer, and with the company representative at all times.

VICINITY MAP



SCALE: 1" = 2 MILES

SEC. 21 TWP. 19-S RGF. 26-F

SURVEY N.M.P.M.

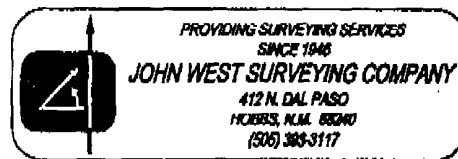
COUNTY EDDY STATE NEW MEXICO

DESCRIPTION 1980' FSL & 1800' FEL

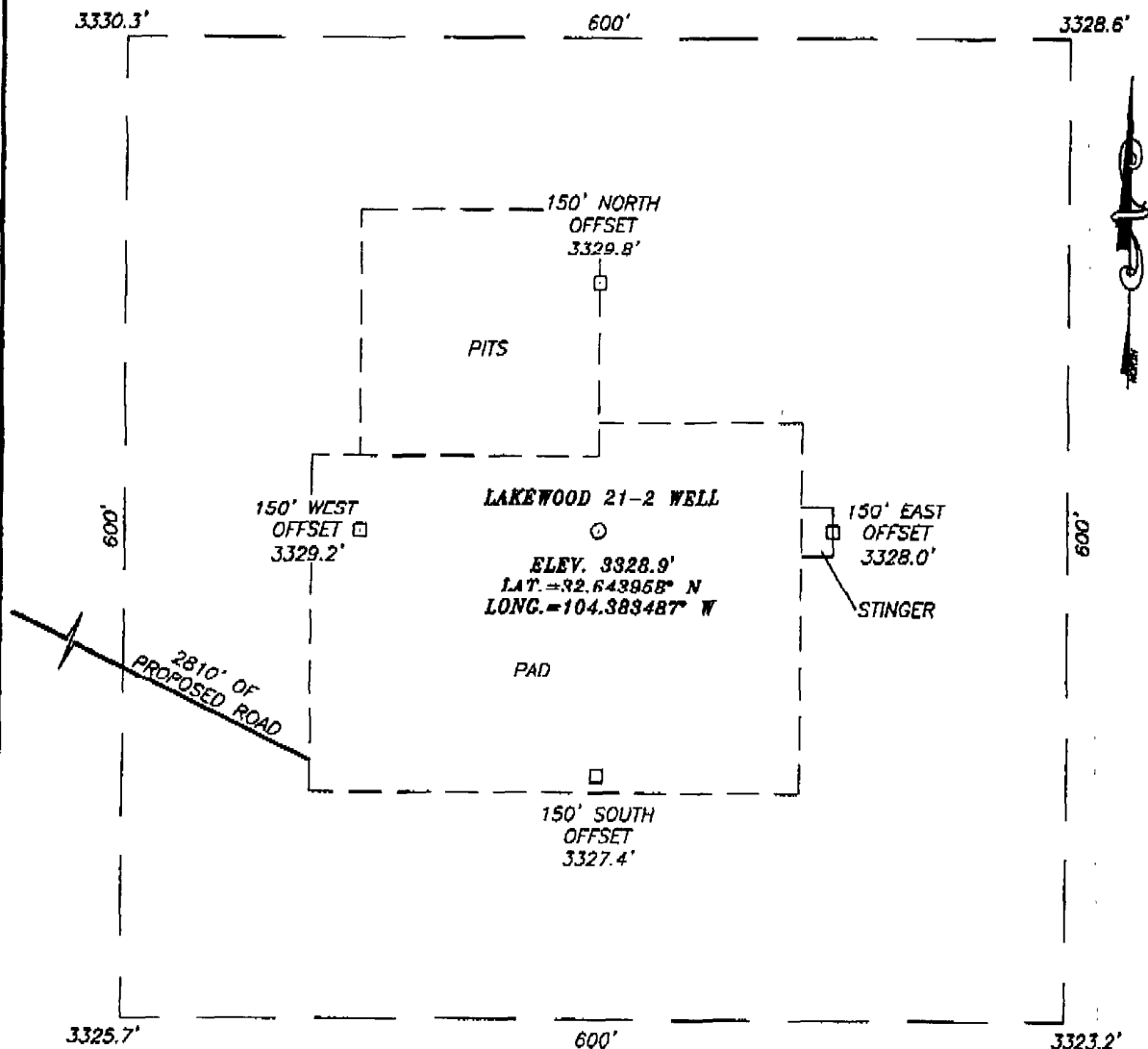
ELEVATION 3329'

OPERATOR RUBICON OIL AND GAS, LLC

LEASE LAKEWOOD

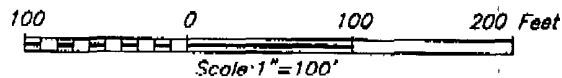
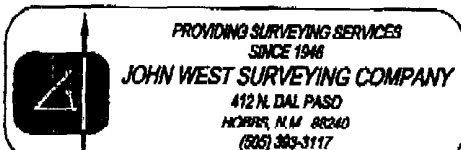


SECTION 21, TOWNSHIP 19 SOUTH, RANGE 26 EAST, N.M.P.M.,
EDDY COUNTY, NEW MEXICO



DIRECTIONS TO LOCATION

FROM THE INTERSECTION OF U.S. HWY. #285
 (SEVEN RIVERS HWY.) AND CO. RD. #31
 (LAKEWOOD ROAD), GO NORTHEAST ON HWY. #285
 APPROX. 1.1 MILES. TURN RIGHT AND GO EAST
 APPROX. 0.1 MILE. TURN RIGHT ON RANCH ROAD
 AND GO SOUTHEAST APPROX. 0.3 MILES TO A
 PROPOSED ROAD SURVEY. FOLLOW ROAD SURVEY
 SOUTHEAST APPROX. 2810 FEET TO THIS
 LOCATION.

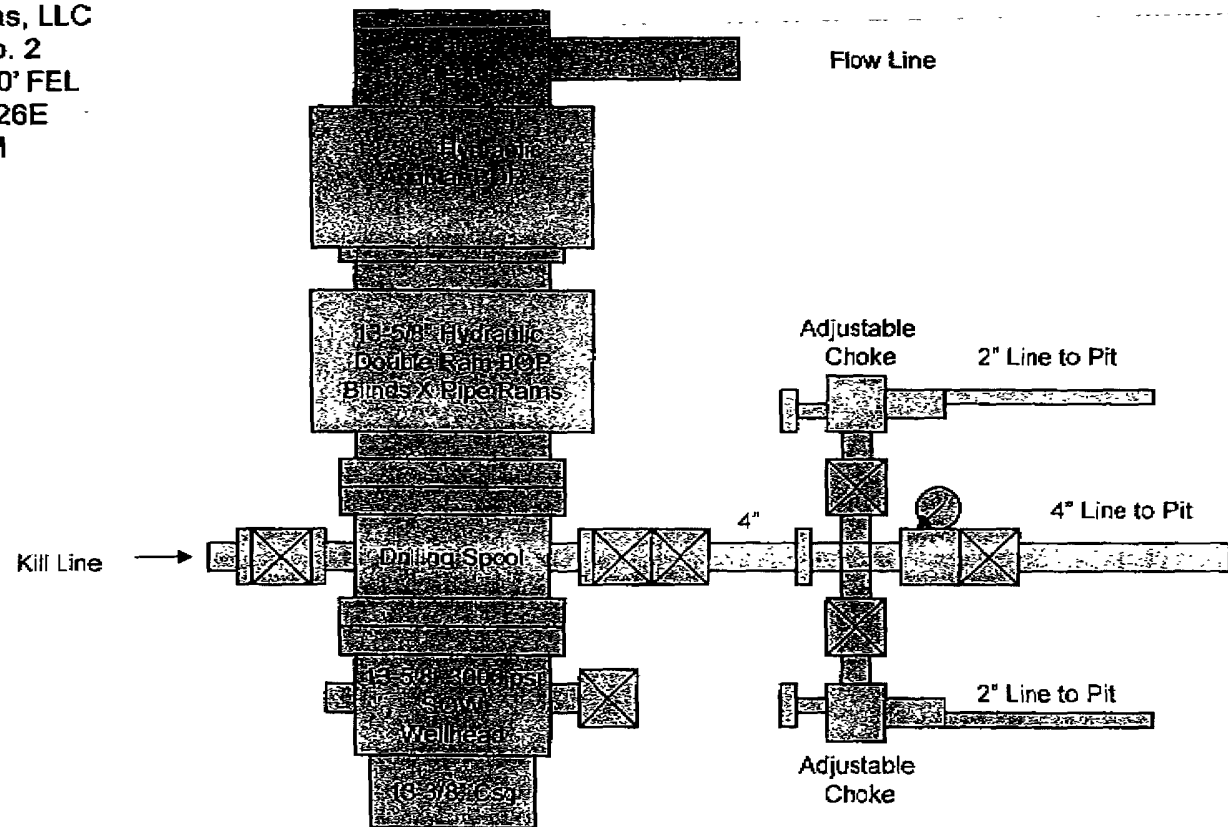


RUBICON OIL AND GAS, LLC

LAKEWOOD 21-2 WELL
 LOCATED 1980 FEET FROM THE SOUTH LINE
 AND 1800 FEET FROM THE EAST LINE OF SECTION 21,
 TOWNSHIP 19 SOUTH, RANGE 26 EAST, N.M.P.M.,
 EDDY COUNTY, NEW MEXICO.

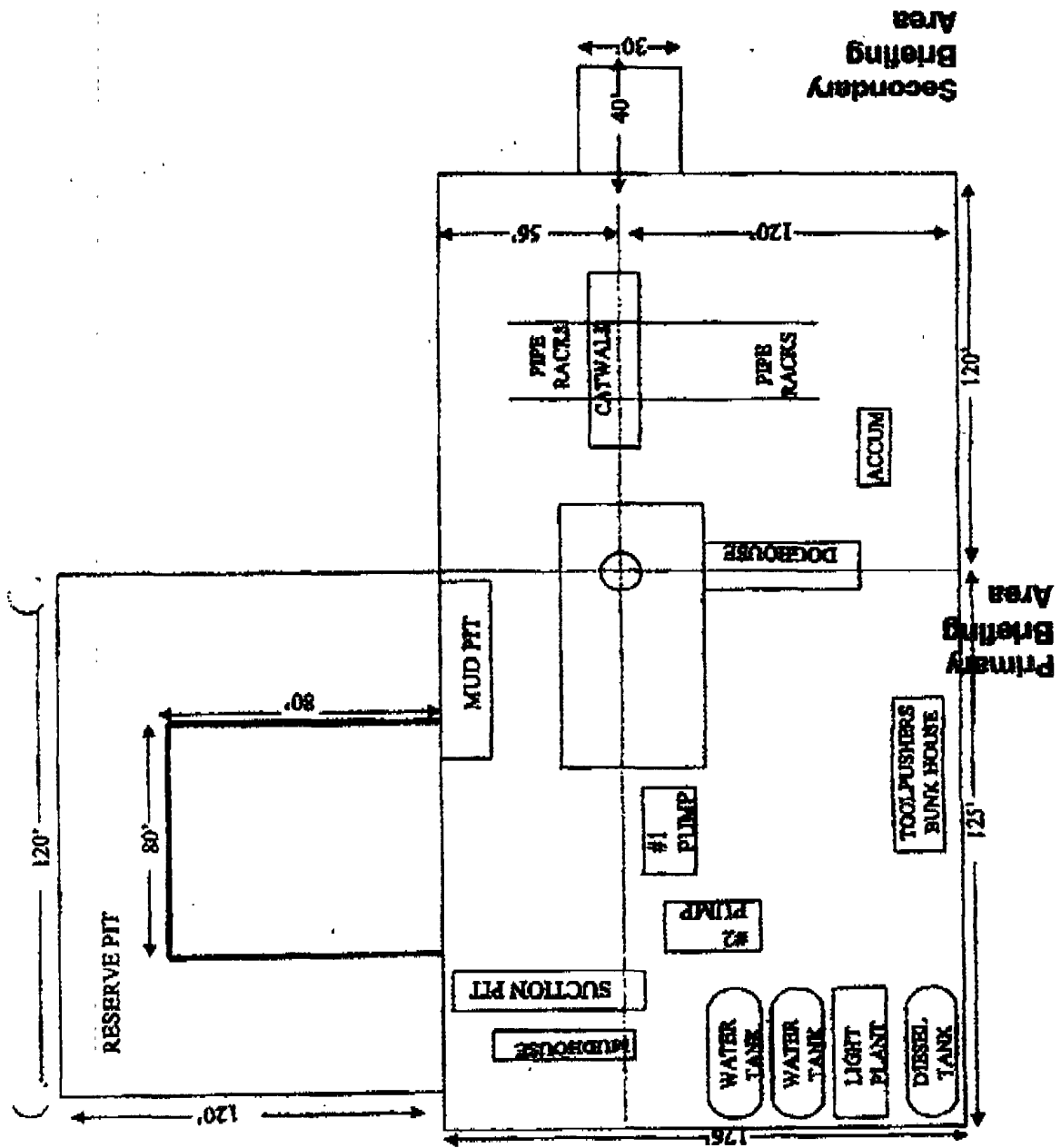
Survey Date: 10/10/07	Sheet 1 of 1 Sheets
W.O. Number: 07.11.1388	Dr By: LA
Date: 10/17/07	Rev 1: N/A
Disk: 07111388	Scale: 1"=100'

Rubicon Oil & Gas, LLC
 Lakewood 21 No. 2
 1980' FSL & 1800' FEL
 Sec 21, T19S, R26E
 Eddy County, NM



3000 psi Working Pressure
 BOPE Configuration
 And Choke Manifold

Exhibit "___"



EMERGENCY RESPONSE ACTIVATION AND GENERAL RESPONSIBILITIES

Activation of the Emergency Action Plan:

In the event of any emergency situation, all personnel on location should first ensure that the following items are initiated. After that, they should refer to the appropriate Specific Emergency Guidance sections as specified under "Well Control" within this document for further responsibilities:

1. Notify the senior ranking contract representative on site.
2. Notify Rubicon representative in charge.
3. Notify civil authorities if the Rubicon representative cannot be contacted and the situation dictates.
4. Perform rescue and first aid as required, without harm to additional personnel.

General Responsibilities:

Operations Specialist: The Rubicon drilling/well servicing supervisor or contract supervisory personnel will serve as Operations Chief Officer for all emergency incidents. The Operations Chief Officer is responsible for:

1. Notification to the downhole/drilling supervisor for the company and rig of the incident occurrence.
2. Notification to the onsite Rubicon representative to lead the emergency response notification to area emergency responders and establish situational control and restore operations to a non-emergency state.
3. The Incident Commander shall be the Rubicon drilling supervisor on site, who will serve as the overall Incident Commander for the drilling, downhole or critical well servicing emergency incident. He/she is responsible for:
 - a. Coordinating with downhole service personnel for notification to all Rubicon personnel and their representatives.
 - b. Establishing and managing the overall incident command structure and response from inception through restoration of normal activities on location and in the area.

Contract Drilling Personnel will immediately report to their assigned stations and perform their duties as outlined in the appropriate *Specific Emergency Guidance* section within this report.

Other Contractor Personnel will report to the safe briefing area to assist Rubicon personnel and civil authorities as requested when it is safe to so do and if they have been adequately trained in their assigned duties.

Civil Authorities: Law Enforcement, Fire and EMS will be responsible for:

1. Establishing membership in the unified incident command.
2. As directed by the site supervisor and as directed by civil procedure, control site access, re-route traffic, and provide escort services for response personnel.
3. Perform all fire control activities in coordination with the site command.
4. Initiate public evacuation plans as instructed by the site command.

5. Perform rescue or recovery activities with coordination from the site command.
6. Provide medical assistance as dictated by the situation at hand.

H2S Release:

The following procedures and responsibilities will be implemented on activation of the H2S siren and lights.

All Personnel:

1. On alarm, put on escape unit (as available) and report to upwind briefing area.

Rig Manager/Tool Pusher:

1. Check that all personnel are accounted for and their condition.
2. Administer or arrange for first aid treatment and/or call EMTs as needed.
3. Identify two people best suited to secure well and perform rescue, and instruct them to don SCBA.
4. Notify Contractor management and the Rubicon representative(s).
5. Remain at the briefing area, assess and monitor personnel and overall situation for hazards or conditions that might warrant a change in the action plan.

Two People Responsible for Shut-in and Rescue:

1. Put on SCBA and acquire tools to secure well and perform rescue, i.e., wrenches, retrieval ropes, etc.
2. Utilize the buddy system to secure well and perform rescue(s).
3. Return to the briefing area and stand by for further instructions.

All Other Personnel:

1. Isolate the area and prevent entry by other persons into the 100 ppm radius of exposure (ROE). Additionally the first responder(s) must evacuate any public places encompassed by the 100 ppm ROE. First responder(s) must take care not to injure themselves during this operation. Company and/or local officials must be contacted to aid in this operation. Evacuation of the public should be beyond the 100 ppm ROE.

Rubicon Representative(s):

1. Remain at the briefing area, assess and monitor personnel and overall situation for hazards or conditions that might warrant a change in the action plan.
2. Notify all operations representatives, H2S response representatives, police, fire department and other local emergency services, as required.

Training:

There will be an initial training session prior to encountering a known or Probable H2S zone (within 3 days or 500 ft.) and weekly H2S and well

Control drills for all personnel in each crew. The initial training session shall include a review of the site specific H2S Drilling Operations Plan and the Contingency Plan. This plan shall be available at the well site. All personnel will be required to carry documentation that they have received proper training.

Ignition of Gas Source:

Should control of the well be considered lost and ignition considered, take care to protect against exposure to Sulfur Dioxide (SO2). Intentional ignition must be coordinated with the New Mexico Oil Conservation Division (NMOCD) and local officials. Additionally the New Mexico State Police shall be the Incident Command of any major release. Ignition of the well will be with the concurrence of the drilling supervisor and the Rubicon supervisor as time allows.

Characteristics of H2S and SO2:

Common Name	Chemical Formula	Specific Gravity	Threshold Limit	Hazardous Limit	Lethal Concentration
Hydrogen Sulfide	H2S	1.189 Air=1	10 ppm	100 ppm	600 ppm
Sulfur Dioxide	SO2	2.21 Air=1	2 ppm	N/A	1000 ppm

Contacting Authorities:

Rubicon personnel must liaison with local and state agencies to ensure a proper response to a major release. Additionally, the NMOCD must be notified of the release as soon as possible, but no later than 4 hours. Agencies will ask for information such as: type and volume of release, wind direction, location of release, etc. Be prepared with all information available. The following call list of essential and potential responders has been prepared for use during a release. This response plan must be in coordination with the State of New Mexico's Hazardous Materials Emergency Response Plan (HMER).

WELL CONTROL

The following procedures will be implemented when a loss of primary control is indicated. Indicators of loss of primary control are flow from the well, an increase in pit volume, or when the drilling fluid used to fill the hole on trips is less than the calculated pipe displacement volume. The emergency signal for well control procedures will be a single long blast of the rig air horn.

Kick While Drilling - Procedures And Responsibilities

Driller:

1. Stop the rotary and hoist the kelly above the rotary table.
2. Stop the mud pump(s).
3. Check for flow.
4. If flowing, sound the alarm immediately.
5. Ensure that all crew members fill their responsibilities to secure the well.
6. Record drill pipe and casing shut-in pressures and pit volume increase and begin kill sheet.

Derrickman:

1. Go to BOP/choke manifold area.
2. Open choke line valve on BOP.
3. Signal to Floorman #1 that the choke line is open.
4. Close chokes after annular or pipe rams are closed.
5. Record shut-in casing pressure and pit volume increase.
6. Report readings and observations to Driller.
7. Verify actual mud weight in suction pit and report to Driller.
8. Be readily available as required for additional tasks.

Floorman # 1:

1. Go to accumulator control station and await signal from Derrickman.
2. Close annular preventer and HCR on signal (if available, if not then close pipe rams).
3. Record accumulator pressures and check for leaks in the BOP or accumulator system.
4. Report to Driller, and be readily available as required for additional tasks.

Floorman # 2:

1. Start water on motor exhausts.
2. Notify Contractor Tool Pusher or Rig Manager of well control situation.
3. Check location for ignition sources and extinguish or turn off, and stop any welding in progress.
4. Report to Driller, and be readily available as required for additional tasks.

Floorman # 3:

1. Stand-by with Driller, and be readily available as required for additional tasks.

Tool Pusher/Rig Manager:

1. Notify Rubicon Representative and report to rig floor.
2. Review and verify all pertinent information.
3. Communicate information to Rubicon Representative, and confer on an action plan.
4. Finalize well control worksheets, calculations and preparatory work for action plan.
5. Initiate and ensure the action plan is carried out,
6. Communicate any changes in well or site conditions, or any indications that the action plan needs to be revised to the Rubicon representative.

Rubicon Representative:

1. Notify Operation Specialists or Team Leader and RMT Leader or Local incident Commander, and Police, Fire Department, or other local emergency services as required.

Kick While Tripping: Procedures and Responsibilities

Driller:

1. Sound the alarm immediately when pipe displacement volume is less than 75% of calculated.
2. Position the upper tool joint just above rotary table and set slips.
3. Check for flow.
4. Ensure that all crew members fill their responsibilities to secure the well.
5. *Record drill pipe and casing* shut-in pressures and pit volume increase, and begin kill sheets,

Derrickman: (same as while drilling)

Floor Man # 1 *

1. Install full opening valve (with help from Floorman #2) in top drill string connection.
2. Tighten valve with make up tongs.
3. Go to accumulator control station and await signal from Derrickman.
4. Close annular preventer and HCR valve on signal (if available, if not then close pipe rams).
5. Record accumulator pressures and check for leaks in the 130P and accumulator system.
6. Report to Driller, and be readily available as required for additional tasks,

Floor Man # 2

1. Assist installing full opening valve in drill string.
2. Position back-up tongs for valve make-up.
3. Start water on motor exhausts,
4. Notify Contractor Tool Pusher or Rig Manager of well control situation.
5. Check location for ignition sources and extinguish or turn off, and stop any welding in progress.
6. Report to Driller, and be readily available as required for additional tasks.

Floor Man # 3, Rig Manager/Tool Pusher, and Rubicon representative: (same as while drilling)

PUBLIC RELATIONS

Rubicon recognizes that the news media have a legitimate interest in incidents at Rubicon *facilities that could affect the public*. It is to the company's benefit to cooperate with the news media when incidents occur because these media are our best liaison with the public.

Our objective is to see that all reports of any emergency are factual and represent the company's position fairly and accurately. Cooperation with news media representatives is the most reliable guarantee that this objective will be met.

All contract and Rubicon employees are instructed NOT to make any statement to the media concerning the emergency incident. If a media representative contacts any *employee, they should refer them to the* designated Emergency Command Center where they should contact the Incident Commander or his designated relief for any information concerning the incident.

RUBICON OIL AND GAS, LLC
Hydrogen Sulfide (H2S) Contingency Plan

CONTACT INFORMATION:

Rubicon Onsite Company Rep: Jerry Cox, 432-557-3136

Rubicon Supt: Hal Lee, 432-664-9040

Rubicon Engineer, David Wantuck, 432-528-2596

Rubicon Location Supv., Bobby Winn, 432-934-5668

JW Drilling, Artesia, Drilling Supt: Kevin Wilbanks, 505-748-8704

JW Drilling Rig #5, Toolpusher: Clearance Doman, Rig number: 505-513-2414

Halliburton, Hobbs, Pete Garza 800-416-6081

Mud: Ambar Lone Star, Mike Mundy, 800-699-7146

Cudd Pressure Control, 432-699-0139

Emergency Notification Numbers

New Mexico State Police	Artesia	505/746-2704
New Mexico State Police	Carlsbad	505/885-3137
New Mexico State Police	Hobbs	505/392-5588
Eddy County Sheriff's Office	Artesia	505/746-2704
Eddy County Sheriff's Office	Carlsbad	505/887-7551
Lea County Sheriff's Office	Hobbs	505/393-2515
Local Emergency Planning Center	Eddy County	505/887-9511
Local Emergency Planning Center	Lea County	505/397-9231
New Mexico Oil & Gas Commission	Artesia	505/748-1283
New Mexico Oil & Gas Commission	Hobbs	505/393-6161
NM Emergency Response Center	Hobbs	505/827-9222
Fire Fighting, Rescue, Ambulance, Police	Artesia	911
Fire Fighting, Rescue, Ambulance, Police	Carlsbad	911
Fire Fighting, Rescue, Ambulance, Police	Hobbs	911
Flight For Life	Lubbock	806/743-9911
Aerocare	Lubbock	806/7478923
Med Flight Air Ambulance	Albuquerque	505/842-4433