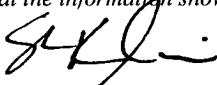


Submit To Appropriate District Office State Lease - 6 copies Fee Lease - 5 copies District I 1625 N French Dr, Hobbs, NM 88240 District II 1301 W Grand Avenue, Artesia, NM 88210 District III 1000 Rio Brazos Rd, Aztec, NM 87410 District IV 1220 S. St. Francis Dr., Santa Fe, NM 87505	State of New Mexico Energy, Minerals and Natural Resources Oil Conservation Division 1220 South St. Francis Dr. Santa Fe, NM 87505	Form C-105 Revised June 10, 2003
		WELL API NO. 30-015-34205
		5. Indicate Type of Lease STATE <input type="checkbox"/> FEE <input checked="" type="checkbox"/>
		State Oil & Gas Lease No.
WELL COMPLETION OR RECOMPLETION REPORT AND LOG		
1a. Type of Well: OIL WELL <input type="checkbox"/> GAS WELL <input checked="" type="checkbox"/> DRY <input type="checkbox"/> OTHER _____		7. Lease Name or Unit Agreement Name Esperanza "24"
b. Type of Completion: NEW <input checked="" type="checkbox"/> WORK <input type="checkbox"/> DEEPEN <input type="checkbox"/> PLUG <input type="checkbox"/> DIFF. <input type="checkbox"/> WELL OVER BACK RESVR <input type="checkbox"/> OTHER _____		
2. Name of Operator BOLD ENERGY, LP		8 Well No. 001
3. Address of Operator 415 W. Wall Street, Suite 500 Midland, Texas 79701		9. Pool name or Wildcat Carlsbad; Morrow, South (Pro Gas)
4 Well Location Unit Letter F : 1685 Feet From The North Line and 1935 Feet From The West Line Section 24 Township 22S Range 26E NMPM Eddy County		
10. Date Spudded 5/27/07	11. Date T.D. Reached 7/16/07	12. Date Compl. (Ready to Prod.) 10/18/07
13. Elevations (DF& RKB, RT, GR, etc.) 3171' (GR)		14. Elev. Casinghead
15. Total Depth 11,910'	16. Plug Back T.D. 11,660' (CIBP)	17. If Multiple Compl. How Many Zones? _____
18. Intervals Drilled By _____		18. Rotary Tools X
19. Producing Interval(s), of this completion - Top, Bottom, Name 11,437' - 11,594'; Morrow		20 Was Directional Survey Made Yes
21 Type Electric and Other Logs Run Dual Laterolog Microguard; Spectral Density Dual Spaced Neutron (on file)		22. Was Well Cored No
23. CASING RECORD (Report all strings set in well)		
CASING SIZE	WEIGHT LB /FT.	DEPTH SET
13.375"	48#	429'
9.625"	36#	1,950'
7"	26#	8,986'
4.5"	13.5#	11,900'
24. LINER RECORD		25. TUBING RECORD
SIZE	TOP	SIZE
	BOTTOM	DEPTH SET
	SACKS CEMENT	PACKER SET
	SCREEN	2-3/8"
26. Perforation record (interval, size, and number)		27. ACID, SHOT, FRACTURE, CEMENT, SQUEEZE, ETC.
11,437' - 11,441' 16 holes 0.43" EHD 11,452' - 11,456' 16 holes 0.43" EHD 11,502' - 11,506' 12 holes 0.42" EHD 11,534' - 11,538' 12 holes 0.42" EHD 11,590' - 11,594' 12 holes 0.46" EHD 11,736' - 11,740' 12 holes 0.42" EHD 11,763' - 11,767' 12 holes 0.42" EHD 11,818' - 11,822' 12 holes 0.42" EHD		DEPTH INTERVAL 11,736' - 11,740' 810 bbls 30# Lightning Fluid + 40,500 lbs VersaProp 11,590' - 11,594' 763 bbls 30# Lightning Fluid + 25,000 lbs VersaProp 11,502' - 11,538' 464,000 scf Nitrogen (breakdown) + 683 bbls 30# PurGel + 65% CO2 + 45,200 lbs Versa Prop 11,437' - 11,456' 15 bbls 3% KCL wtr (breakdown) + 581 bbls 30# PurGel + 65% CO2 + 37,464 lbs Versa Prop
28 PRODUCTION		
Date First Production 11/29/07		Production Method (Flowing, gas lift, pumping - Size and type pump) Flowing
Well Status (Prod. or Shut-in) Producing		
Date of Test 11/29/07	Hours Tested 24	Choke Size 48/64"
Prod'n For Test Period	Oil - Bbl 0	Gas - MCF 268
Water - Bbl 91	Gas - Oil Ratio 2.95	
Flow Tubing Press. 500	Casing Pressure 960	Calculated 24-Hour Rate
Oil - Bbl 0	Gas - MCF 268	Water - Bbl 91
Oil Gravity - API - (Corr.) N/A		
29. Disposition of Gas (Sold, used for fuel, vented, etc.) Sold		Test Witnessed By Donny Money
30. List Attachments		
Current Wellbore Diagram. Note: Well Logs and Deviation Data Sent in with C-103		
31. I hereby certify that the information shown on both sides of this form as true and complete to the best of my knowledge and belief		
Signature 	Printed Name Shannon L. Klier	Title Operations Engineering Manager
E-mail Address shannon.klier@boldenergy.com	Date 12/11/07	

INSTRUCTIONS

This form is to be filed with the appropriate District Office of the Division not later than 20 days after the completion of any newly-drilled or deepened well. It shall be accompanied by one copy of all electrical and radio-activity logs run on the well and a summary of all special tests conducted, including drill stem tests. All depths reported shall be measured depths. In the case of directionally drilled wells, true vertical depths shall also be reported. For multiple completions, items 25 through 29 shall be reported for each zone. The form is to be filed in quintuplicate except on state land, where six copies are required. See Rule 1105.

INDICATE FORMATION TOPS IN CONFORMANCE WITH GEOGRAPHICAL SECTION OF STATE

Southeastern New Mexico			Northwestern New Mexico	
T. Anhy	T. Canyon		T. Ojo Alamo	T. Penn. "B"
T. Salt	T. Strawn	10,282	T. Kirtland-Fruitland	T. Penn. "C"
B. Salt	T. Atoka	10,790	T. Pictured Cliffs	T. Penn. "D"
T. Yates	T. Miss		T. Cliff House	T. Leadville
T. 7 Rivers	T. Devonian		T. Menefee	T. Madison
T. Queen	T. Silurian		T. Point Lookout	T. Elbert
T. Grayburg	T. Montoya		T. Mancos	T. McCracken
T. San Andres	T. Simpson		T. Gallup	T. Ignacio Otzte
T. Glorieta	T. McKee		Base Greenhorn	T. Granite
T. Paddock	T. Ellenburger		T. Dakota	T.
T. Blinebry	T. Gr. Wash		T. Morrison	T
T.Tubb	T. Delaware Sand	1,945	T.Todilto	T.
T. Drinkard	T. Bone Springs	5,308	T. Entrada	T.
T. Abo	T.		T. Wingate	T.
T. Wolfcamp	T.	8,910	T. Chinle	T.
T. Penn	T.	10,282	T. Permian	T.
T. Cisco (Bough C)	T.		T. Penn "A"	T.

OIL OR GAS SANDS OR ZONES

No. 1, from.....None.....to.....
 No. 2, from.....to.....
 No. 3, from.....to.....
 No. 4, from.....to.....

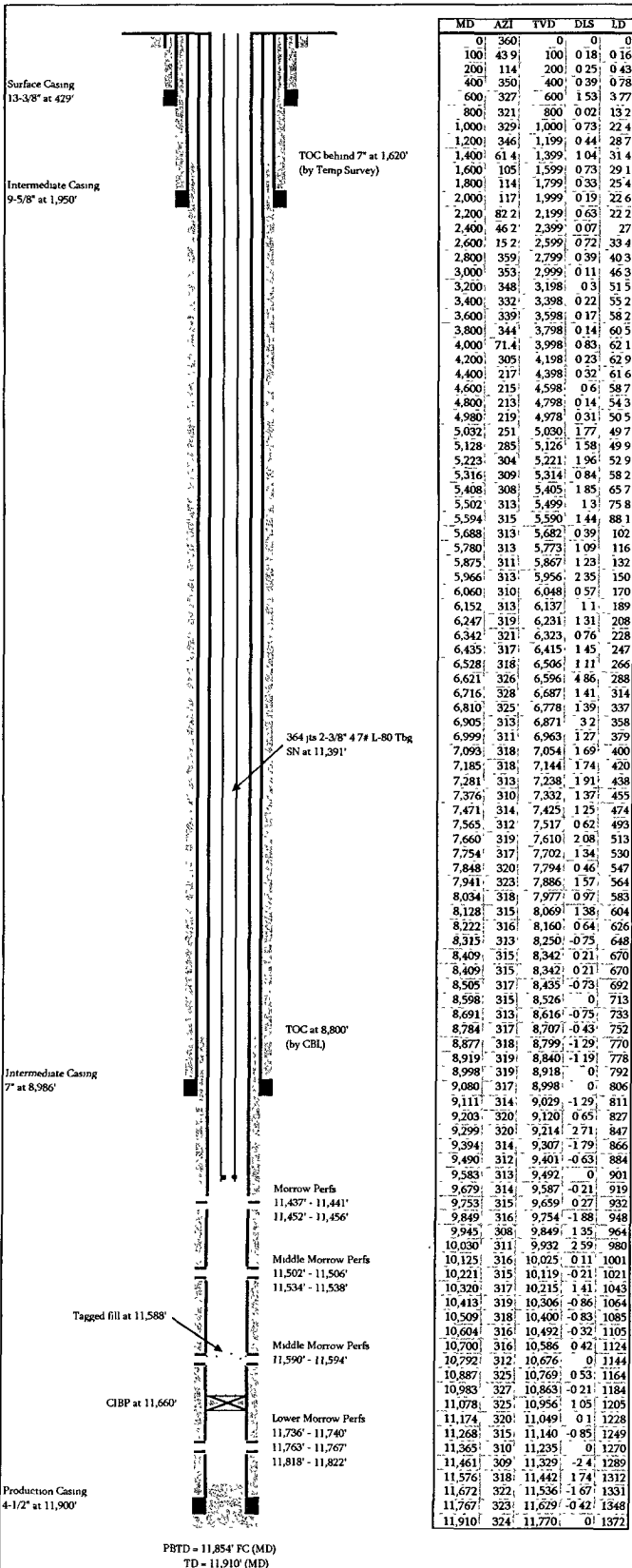
IMPORTANT WATER SANDS

Include data on rate of water inflow and elevation to which water rose in hole.

No. 1, from.....None.....to.....feet.....
 No. 2, from.....to.....feet.....
 No. 3, from.....to.....feet.....

LITHOLOGY RECORD (Attach additional sheet if necessary)

From	To	Thickness In Feet	Lithology	From	To	Thickness In Feet	Lithology
0	1945	1945	Guadalupian Series				
1945	5308	3363	Delaware Mountain Group Sandstones				
5308	8910	3602	Bone Spring, limestone, sandstone				
8910	10282	1372	Wolfcamp Shale, Limestone				
10282	10790	508	Strawn Limestone, Shale				
10790	10978	188	Atoka Shale, Sand				
10978	11310	332	Morrow Limestone & Shale				
11310	11910	600	Morrow Sandstone & Shale				



BOLD ENERGY, LP

Esperanza 24-1

WI/NRI: 75% / 57.42%
Elevation: 3,171' (GL)
KB: 18'
Mesa: TD: 11,910' (MD)
TVD: 11,770' (FVD)
PBD: 11,854' FC (MD)
Zone: Morrow

API: 30-015-34205
Surface Location: 1685' FNL & 1935' FWL
Surf Legal Description: UL "F" Section 24 - T22S - R26E
BH Location: 669' FNL & 1012' FWL
BH Legal Description: UL "C" Section 24 - T22S - R26E
Field: South Carlsbad
County, State: Eddy, New Mexico

Casing	Hole	Weight	Grade	Depth (MD/TVD)	Collapse	Burst	Sacks	TOC
20"	17-1/2"	48#	H-40	429'	740	1,730	450 (107 bbls)	Surface
13-3/8"	12-1/4"	36#	J-55	1,950' / 1,949'	2,020	3,520	815 (215 bbls)	Surface
9-5/8"	8-3/4"	26#	P-110	8,966' / 8,906	6,230	9,960	429 (448 bbls)	1,620' (TS)
7"	6-1/8"	13.5#	P-110	11,900' / 11,760'	10,690	12,410	300 (85 bbls)	8,800' (CBL)

Date Event

5/27/2007 Spud
7/16/2007 TD
7/23/2007 Ran bit and scraper to PBTD (11,858') Pickled tubing and casing w/ 500 gal 15% HCL acid. Left 3% KCL in hole. Ran HES radial CBL at 0 psi and 2,000 psi. Found TOC at 8,800'. Tested casing to 8,250 psi.
7/25/2007 Perforated Lower Morrow interval 11,818' - 11,822'. Broke down with 15 bbls 3% KCL water. Broke at 4,250 psi. APR = 4.5 bpm. ATP = 3,600 psi. ISIP = 3,750 psi.
5 min SIP = 1,600 psi, 10 min SIP = 1,185 psi, 15 min SIP = 1,000 psi. Perforated remaining Lower Morrow
11,763' - 11,767' & 11,736' - 11,740'. All zones 3' w/ 120' FHD. 0.42' FHD.
7/26/2007 SICP = 325 psi. Blew well down. No flow.
7/27/2007 Frac'd down casing with 40,500 lbs 20/40 VersaProp using BJ's Lightning 30 fluid system. APR = 19.9 bpm. ATP = 3,709 psi. ISIP = 3,156 psi, 5 min SIP = 2,892 psi, 10 min SIP = 2,654 psi, 15 min SIP = 2,442 psi.

810 bbls frac load to recover

Day	Rec	Tot Rec	LTR	% Rec	IEL	EFL	Final CP
1	54	54	756	6.7%	4500	700	0
2	108	162	648	20.0%	700	1000	375
3	189	351	459	43.3%	500	1250	600
4	225	576	234	71.1%	1300	1300	750
5	198	774	36	95.6%	2000	700	800

8/2/2007 POOH w/ thg & set CIBP at 11,660'

Perforated Middle Morrow interval 11,590' - 11,594' at 3 spf, 120 deg, 0.46' EHD w/ 3-1/8" csg guns. TIH w/ SN on 2-3/8" tubing. Hole loaded w/ 2bbls. Pumped 10 bbl KCL wtr breakdown. Broke at 5,195 psi. ISIP = 4,089 psi, 5 min SIP = 3,136', 10 min SIP = 2,727 psi, 15 min SIP = 2,493 psi, 1 HR SIP = 1,721 psi. Frac'd Middle Morrow with 24,035 lbs VersaProp in 304 Lightning fluid at ATP = 8,629 psi. APR = 10.3 bpm. SICP = 7,757 psi. Opened tubing to FB tank. Ran pumping 120 annulus.
No nitrogen returns observed after pumping a full circulation volume.
Stabilized injection pressure down annulus = 2,800 psi. SD nitrogen pump.
Pressure remained at 2,900 psi for 30 minutes. (High-end BHP estimate)

763 bbls frac load to recover

Day	Rec	Tot Rec	LTR	% Rec	IEL	EFL	Final CP
1	178	178	585	23.3%	(Flowing Back)		2900
2	91	269	541	35.3%	6800	8000	450
3	43	312	498	40.9%	7100	8900	310
4	7	319	491	41.8%	9600	10000	400

8/8/2007 Bleed pressure off thg and csg. POOH w/ tubing. Set 10K psi CBP at 11,570'

Tested plug to 5K psi with KCL water. TIH w/ tubing OE.
Circulate wellbore to Nitrogen. TOOH with tubing. Perforate Middle Morrow
11,502' - 11,506' & 11,534' - 11,538' at 3 spf, 120 deg, 0.42' EHD w/ 3-1/8" csg guns.
RIH w/ SL gauges to 11,550'.

8/10/2007 Broke down formation with nitrogen at 6,125 psi and 5,000 scfm. Pumped into formation for 13 minutes at 5,000 scfm at 5,900 psi. ISIP = 5,700 psi, 5 min SIP = 5,650 psi, 10 min SIP = 5,575 psi, 15 min SIP = 5,525 psi. Used 464,000 scf Nitrogen total. Leave gauges in hole over weekend.

8/13/2007 SICP = 3,838 psi. POOH w/ SL gauges. Lowest measured BHP = 5,266 psi.
Open well on 28/64" ck. Blew down to 0 psi FCP in 2 hrs. No show of natural gas.

8/14/2007 SICP = 225 psi. Wait on frac date

8/15/2007 SICP = 450 psi.

8/16/2007 SICP = 700 psi.

8/17/2007 SICP = 825 psi.

8/18/2007 SICP = 950 psi.

8/19/2007 SICP = 1075 psi.

8/20/2007 SICP = 1200 psi.

8/21/2007 SICP = 1300 psi.

8/22/2007 SICP = 1375 psi.

8/23/2007 SICP = 1450 psi.

8/24/2007 MIRU HES Frac Equipment. Fracture stimulated Middle Morrow Perfs; 11,502' - 11,538' as follows.

Placed 45,200 lbs 18/40 VersaProp in formation w/ 65Q CO₂ / 304 PurGel at Qvg = 25.4 bpm Pavg = 7,155 psi. Screen out occurred with 3 ppa on formation. Left +/- 15,600 lbs of proppant in wellbore. ISIP = 8,600 psi. Immediately RD HES equipment from WH and began flowback. LTR = 682 bbls.

Flowback 369 bbls in 18 hours = 54% load recovery

Flowback 22 bbls making load recovery 391 bbls = 57%.

8/26/2007 Well dead. RU PU RIH w/ 370 lbs of 2-3/8" thg w/ STD SN. Tagged bottom. Perfs clear SN at 11,485'.

8/27/2007 SITP = 950 psi. SICP = 750 psi. RU swab unit. SFL = 3,500'. EFL = 9,500'. Swabbed 73 bbls. Well flowed 10 bbls and died. Final CP = 400 psi. Total load recovery = 474 bbls (69.5%) SIWON.

8/28/2007 SITP = 820 psi. SICP = 820 psi. SFL = scattered to 3,500' and solid to 7,800'. Well kicked off after 1st run.

Well flowed 3 hrs making 15 bbls. Two swab runs after well died with no recovery.

Total load recovery = 489 bbls (71.7%) SIW for BU at 2:00 pm TX time

8/29/2007 SITP = 1180 psi. SICP = 1100 psi.

8/30/2007 SITP = 1750 psi. SICP = 1600 psi.

8/31/2007 SITP = 2125 psi. SICP = 2025 psi.

9/1/2007 SITP = 2350 psi. SICP = 2275 psi.

9/3/2007 SITP = 2350 psi. SICP = 2350 psi.

9/11/2007 SITP = 2350 psi. SICP = 2350 psi.

Performed 33 hour flowtest. Final FTP = 75 psi and CP = 450 psi on 24/64" CK. Recovered 98.5 BLW.

Total load recovery = 588 bbls (86.1%). Remaining load to recover = 95 bbls.

Shut in & evaluate

9/18/2007 SITP = 2400 psi. SICP = 2400 psi.

10/2/2007 SITP = 2400 psi. SICP = 2400 psi. Blow pressure off well. Spot KCL max water and POOH w/ SN & thg.

10/3/2007 TIH w/ JB & GR. Set CBP at 11,480'. Load casing & test CBP to 5,000 psi. Perforated Morrow w/ 3-1/8" csg guns. 11,452' - 11,456' (4') w/ 4 mft 120' nhased 0.43' FHD (16 shots). Broke down at 3,880 psi. Pumped 15 bbls. 3% KCL water at 3 bpm & 3,500 psi. ISIP = 3,200 psi. 5 min SIP = 2,500 psi. 10 min SIP = 2,250 psi.

15 min SIP = 2,100 psi. Perforated 11,437' - 11,441' (4') w/ 4 mft 120' nhased 0.43' FHD (16 shots). SICP = 580 psi. Bled off pressure. ND BOP. NU Frac Head.

10/6/2007 MIRU HES Frac Equipment. Fracture stimulated Middle Morrow, 11,437' - 11,456' as follows.

Placed 37,464 lbs 18/40 VersaProp in formation w/ 65Q CO₂ / 304 PurGel at Qvg = 28.0 bpm Pavg = 7,763 psi. Screen out occurred with 3 ppa on formation. Left +/- 10,533 lbs of proppant in wellbore.

ISIP = 10,142 psi. Immediately RD HES equipment from WH and began flowback. LTR = 581 bbls.

Flowback 205 bbls in 18 hours = 35.3% load recovery. Remaining LTR = 376 bbls.

RIH w/ mil & motor on 2" CT and drill out CBPs at 11,480' & 11,570' using 70Q foam. Spot KCL max & POOH.

Remaining LTR from all stages = 1,088 bbls.

10/8/2007 TIH w/ SN on 2-3/8" 4 7/8 L-80 tubing. ND BOPE. NU WH. Swab back 24 bbls and well kicked off.

Recovered additional 316 bbls flowing overnight. Total swab back load to recover from all stages = 679 bbls.

SI well at 6pm. LR = 1,784 bbls out of 2,131 bbls. 84% recovery. 347 bbls remaining to recover.

10/15/2007 SITP = 1,850 psi. SICP = 1,550 psi.

10/16/2007 SITP = 2

Arrant, Bryan, EMNRD

From: D Menoud [denise_graysurfacespecialties@yahoo.com]
Sent: Wednesday, April 25, 2007 3:14 PM
To: Arrant, Bryan, EMNRD
Cc: SHANNON KLIER; DWAIN MOORE-work; LEE ANN ROLLINS
Subject: Fw: Esperanza "24" - Bold Energy - API 30-015-34205

RE: Esperanza "24" #1
API #30-015-34205
Bold Energy

Bryan, attached is the new Directional Survey and the new Drill Plan for the above well we talked about for your review to see if we can proceed. I also attached the Pure Approved APD from the OCD website.

I'm preparing a Sundry with plat and H2S plan with Bold's contacts, and will attach the new plans. I'll either mail in or I can bring them down to you.

Thank you Bryan.

DENISE MENOUD

Phone / Fax: 505-457-2019; Cell: 432-556-6272
denise_graysurfacespecialties@yahoo.com
Gray Surface Specialties Midland: 432-685-9158

----- Forwarded Message -----

From: D Menoud <denise_graysurfacespecialties@yahoo.com>
To: "Arrant, Bryan, EMNRD" <bryan.arrant@state.nm.us>
Cc: SHANNON KLIER <shannon.klier@boldenergy.com>; DWAIN MOORE-work <dwaine@graysurfacespecialties.com>; LEE ANN ROLLINS <leeann@graysurfacespecialties.com>
Sent: Tuesday, April 24, 2007 1:59:05 PM
Subject: Re: Esperanza "24" - Bold Energy - API 30-015-34205

Hi Bryan.

Waiting on the new directional plan to email to you for review with the new BHL.
It went from 750 FNL & 1400 FWL to 660 FNL & 990 FWL.
So I'll correct the BHL on the plat that is on file, scan and attach also.

I'll also send you another H2S plan with Bold's contacts.

The 4-1/2" casing cement would top will be a few hundred feet above the 7" casing shoe, but not to surface.
This change will be on the new Drill Prog or we can just list the change on the Sundry.

As soon as we get the new plans, I'll forward them on to you to see if they can move on the well by approx. May 4. We would, of course, send an original Sundry in for your files. Bold will also submit the paperwork necessary for the change of op on the APD. I'll get with Carmen on that.

We weren't sure what we could change on the APD with a Sundry and hoped we didn't have to start from scratch with a new APD. By passing it over with you first, we'll be sure where we stand and Bold can make plans accordingly.

Thank you Bryan. 😊

4/26/2007