

OPERATOR'S COPY

UNITED STATES  
DEPARTMENT OF THE INTERIOR  
BUREAU OF LAND MANAGEMENT

APPLICATION FOR PERMIT TO DRILL OR REENTER

FEB 27 2008  
OCD-ARTESIA

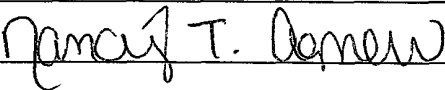

FORM APPROVED  
OMB No. 1004-0136  
Expires January 31, 2004

1a Type of Work. <input checked="" type="checkbox"/> DRILL <input type="checkbox"/> REENTER		5 Lease Serial No. NMLC029342C
1b. Type of Well <input checked="" type="checkbox"/> Oil Well <input type="checkbox"/> Gas Well <input type="checkbox"/> Other <input checked="" type="checkbox"/> Single Zone <input type="checkbox"/> Multiple Zone		6 If Indian, Allottee or Tribe Name
2 Name of Operator Marbob Energy Corporation		7 If Unit or CA Agreement, Name and No
3a. Address P O. Box 227, Artesia, NM 88211-0227		8 Lease Name and Well No Tyler Federal #3
3b. Phone No. (include area code) 505-748-3303		9. API Well No 30-015-36159
4. Location of Well (Report location clearly and in accordance with any State requirements *) At surface 690' FNL & 330' FWL At proposed prod. zone		10 Field and Pool, or Exploratory Loco Hills; Glorieta-Yeso
14. Distance in miles and direction from nearest town or post office* 1/2 a mile from Loco Hills, NM		11 Sec, T, R, M., or Blk. and Survey or Area Section 21, T17S - R30E
15. Distance from proposed* location to nearest property or lease line, ft. (Also to nearest drig unit line, if any) 330'	16 No. of Acres in lease 120	17. Spacing Unit dedicated to this well 40
18 Distance from proposed location* to nearest well, drilling, completed, applied for, on this lease, ft.	19 Proposed Depth 5970'	20 BLM/BIA Bond No. on file NMB000412
21 Elevations (Show whether DF, KDB, RT, GL, etc.) 3656' GL	22 Approximate date work will start* January 20, 2007	23. Estimated duration 15 Days

24. Attachments

The following, completed in accordance with the requirements of Onshore Oil and Gas Order No 1, shall be attached to this form

- |                                                                                                                                                |                                                                                                  |
|------------------------------------------------------------------------------------------------------------------------------------------------|--------------------------------------------------------------------------------------------------|
| 1 Well plat certified by a registered surveyor.                                                                                                | 4. Bond to cover the operations unless covered by an existing bond on file (see Item 20 above).  |
| 2 A Drilling Plan                                                                                                                              | 5. Operator certification.                                                                       |
| 3 A Surface Use Plan (if the location is on National Forest System Lands, the SUPO shall be filed with the appropriate Forest Service Office). | 6 Such other site specific information and/or plans as may be required by the authorized officer |

25 Signature 	Name (Printed/Typed) Nancy T. Agnew	Date 12/26/07
Title		
Land Department		
Approved by (Signature) 	Name (Printed/Typed) J. Arnold	Date 2/26/08
Title FIELD MANAGER	Office CARLSBAD FIELD OFFICE	

Application approval does not warrant or certify that the applicant holds legal or equitable title to those rights in the subject lease which would entitle the applicant to conduct operations thereon

Conditions of approval, if any, are attached

APPROVAL FOR TWO YEARS

Title 18 U.S.C. Section 1001 and Title 43 U.S.C. Section 1212, make it a crime for any person knowingly and willfully to make to any department or agency of the United States any false, fictitious or fraudulent statements or representations as to any matter within its jurisdiction

\*(Instructions on reverse)

Roswell Controlled Water Basin

SEE ATTACHED FOR  
CONDITIONS OF APPROVAL

APPROVAL SUBJECT TO  
GENERAL REQUIREMENTS  
AND SPECIAL STIPULATIONS  
ATTACHED



## STATEMENT ACCEPTING RESPONSIBILITY FOR OPERATIONS

The undersigned accepts all applicable terms, conditions, stipulations, and restrictions concerning operations conducted on the leased land or portion thereof, as described below:

Date: December 26, 2007

Lease #: NMUC029342C  
Tyler Federal #3

Legal Description: Sec. 21-T17S-R30E  
Eddy County, New Mexico

Formation(s): Permian

Bond Coverage: Statewide

BLM Bond File #: NMB000412

Nancy Agnew  
Nancy Agnew  
Land Department

DISTRICT I  
1625 N. FRENCH DR. HOBBS, NM 88240

DISTRICT II  
1301 W. GRAND AVENUE, ARTESIA, NM 88210

DISTRICT III  
1000 Rio Brazos Rd., Aztec, NM 87410

DISTRICT IV  
1220 S. ST. FRANCIS DR., SANTA FE, NM 87505

State of New Mexico  
Energy, Minerals and Natural Resources Department

OIL CONSERVATION DIVISION  
1220 SOUTH ST. FRANCIS DR.  
Santa Fe, New Mexico 87505

6  
FEB 27 2008  
OCD-ARTESIA

Form C-102  
Revised October 12, 2005  
Submit to Appropriate District Office  
State Lease - 4 Copies  
Fee Lease - 3 Copies

WELL LOCATION AND ACREAGE DEDICATION PLAT

☐ AMENDED REPORT

API Number	Pool Code 46718	Pool Name LOCO HILLS; GLORIETA YESO
Property Code 23211	Property Name TYLER FEDERAL DEC 17 2007	Well Number 3
OGRID No. 14049	Operator Name MARBOB ENERGY CORPORATION	Elevation 3656'

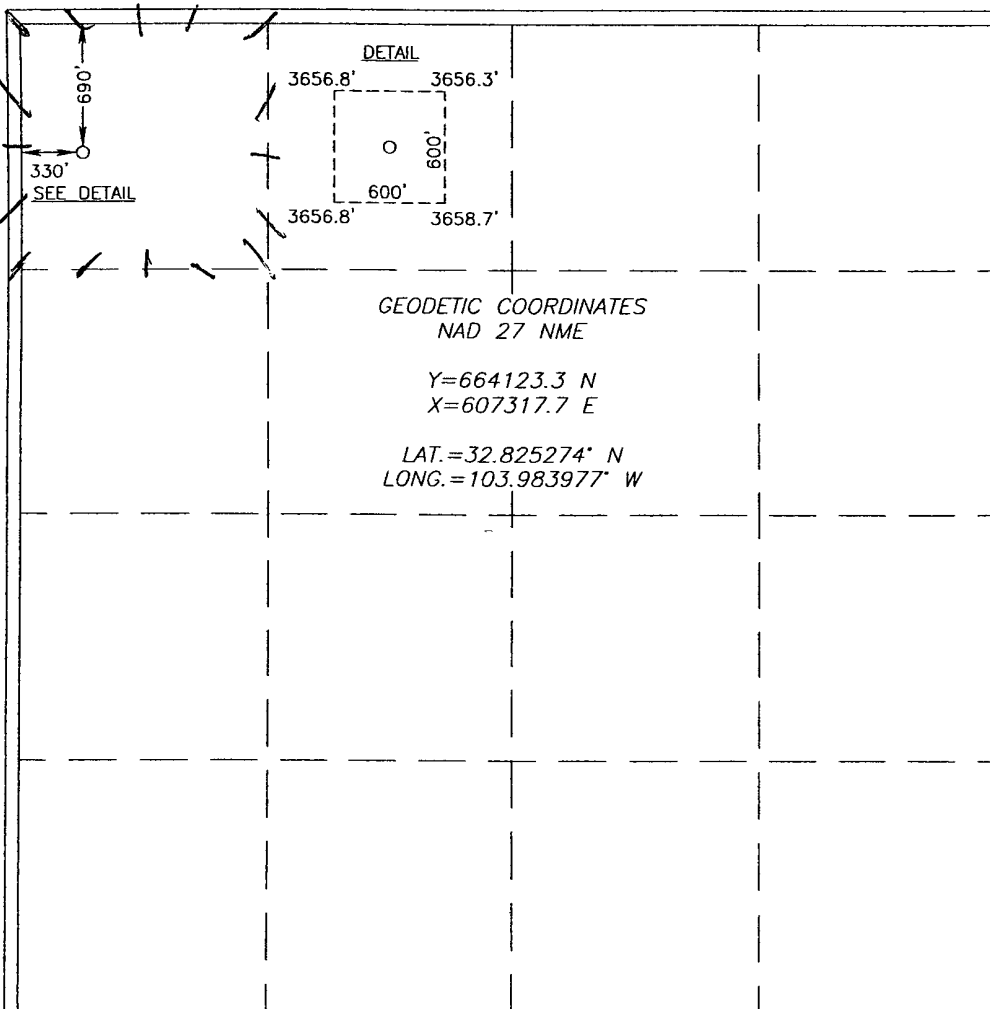
Surface Location

UL or lot No.	Section	Township	Range	Lot Idn	Feet from the	North/South line	Feet from the	East/West line	County
D	21	17-S	30-E		690	NORTH	330	WEST	EDDY

Bottom Hole Location If Different From Surface

UL or lot No.	Section	Township	Range	Lot Idn	Feet from the	North/South line	Feet from the	East/West line	County
Dedicated Acres 40	Joint or Infill	Consolidation Code	Order No.						

NO ALLOWABLE WILL BE ASSIGNED TO THIS COMPLETION UNTIL ALL INTERESTS HAVE BEEN CONSOLIDATED  
OR A NON-STANDARD UNIT HAS BEEN APPROVED BY THE DIVISION



OPERATOR CERTIFICATION

I hereby certify that the information herein is true and complete to the best of my knowledge and belief, and that this organization either owns a working interest or unleased mineral interest in the land including the proposed bottom hole location or has a right to drill this well at this location pursuant to a contract with an owner of such mineral or working interest, or to a voluntary pooling agreement or a compulsory pooling order heretofore entered by the division.

Nancy T. Agnew 12/20/07  
Signature Date

Nancy T. Agnew  
Printed Name

SURVEYOR CERTIFICATION

I hereby certify that the well location shown on this plat was plotted from field notes of actual surveys made by me or under my supervision, and that the same is true and correct to the best of my belief.

DECEMBER 03 12 00 07

Date Surveyed  
Signature & Seal of Professional Surveyor

Ronald J. Eidson 12/20/07  
07-11-1673

Certificate No. GARY EIDSON 12641  
RONALD J. EIDSON 3239

**MARBOB ENERGY CORPORATION**  
**DRILLING AND OPERATIONS PROGRAM**

**Tyler Federal #3**  
**690' FNL & 330' FWL,**  
**Section 21, T17S, R30E**  
**Eddy County, New Mexico**

In conjunction with Form 3160-3, Application for Permit to Drill subject well, Marbob Energy Corporation submits the following ten items of pertinent information in accordance with BLM requirements.

1. Geological surface formation: Permian
2. The estimated tops of geologic markers are as follows:

Rustler	360'	San Andres	2815'
Top Salt	555'	Glorieta	4244'
Bottom Salt	1026'	Tubb	5820'
Yates	1204'	TD	5970'
Queen	2100'		

3. The estimated depths at which anticipated water, oil or gas formations are expected to be encountered:

Yates	1204'	Oil
Queen	2100'	Oil
San Andres	2815'	Oil
Glorieta	4244'	Oil

No other formations are expected to give up oil, gas, or fresh water in measurable quantities. The surface fresh water sands will be protected by setting 8 5/8" casing at 400' and circulating cement back to surface. All intervals will be isolated by setting 5 1/2" casing to total depth and circulating cement above the base of the 8 5/8" casing.

**4. Proposed Casing Program:**

Hole Size	Interval	OD Casing	New or Used	Wt	Collar	Grade	Collapse Design Factor	Burst Design Factor	Tension Design Factor
12 1/4"	0' - 400'	8 5/8"	New	24#	STC	J-55	1.125	1.125	1.6
7 7/8"	400' - 5970'	5 1/2"	New	17#	LTC	J-55	1.125	1.125	1.6

**5. Proposed Cement Program:**

## 5. Proposed Cement Program:

- b. 8 5/8" Surf Cement to surface with 300 sk "C" wt 14.8 ppg yield 1.34.
- c. 5 1/2" Prod Cement to surface with 550 sk "H" Lite wt 12.6 yield 1.93  
Tail in with 300 sk "H" yield 1.67 wt 13.0 ppg

The above cement volumes could be revised pending the caliper measurement from the open hole logs. The top of cement is designed to reach approximately 200' above the 8 5/8" casing shoe. **All casing is new and API approved.**

## 6. Minimum Specifications for Pressure Control:

Nipple up on 8 5/8" casing with a 2M system and test to 1000# with rig pumps. *see COA*

Pipe rams will be operationally checked each 24 hour period. Blind rams will be operationally checked on each trip out of the hole. These checks will be noted on the daily tour sheets. A 2" kill line and a 3" choke line will be included in the drilling spool located below the ram-type BOP. Other accessories to the BOP equipment will include a Kelly cock and floor safety valve (inside BOP) and choke lines and choke manifold with 2000 psi WP rating.

## 7. Estimated BHP: 2483.52 psi

## 8. Mud Program: The applicable depths and properties of this system are as follows:

Depth	Type System	Mud Weight	Viscosity (sec)	Waterloss (cc)
0' - 400'	Fresh Water	8.4	29	N.C.
400' - 5970'	Brine	9.9 - 10.0	29	N.C.

The necessary mud products for weight addition and fluid loss control will be on location at all times.

## **9. Auxiliary Well Control and Monitoring Equipment:**

- a. A Kelly cock will be in the drill string at all times.
- b. A full opening drill pipe stabbing valve having the appropriate connections will be on the rig floor at all times.
- c. Hydrogen Sulfide detection equipment will be in operation after drilling out the 8 5/8" casing shoe until the 5 1/2" casing is cemented. Breathing equipment will be on location upon drilling the 8 5/8" shoe until total depth is reached.

## **10. Testing, Logging and Coring Program:**

- a. Drill stem tests will be based on geological sample shows.
- b. The open hole electrical logging program will be:
  - i. Total Depth to Intermediate Casing: Dual Laterolog-Micro Laterolog and Gamma Ray. Compensated Neutron – Z Density log with Gamma Ray and Caliper.
  - ii. Total Depth to Surface: Compensated Neutron with Gamma Ray
  - iii. No coring program is planned
  - iv. Additional testing will be initiated subsequent to setting the 5 1/2" production casing. Specific intervals will be targeted based on log evaluation, geological sample shows and drill stem tests.

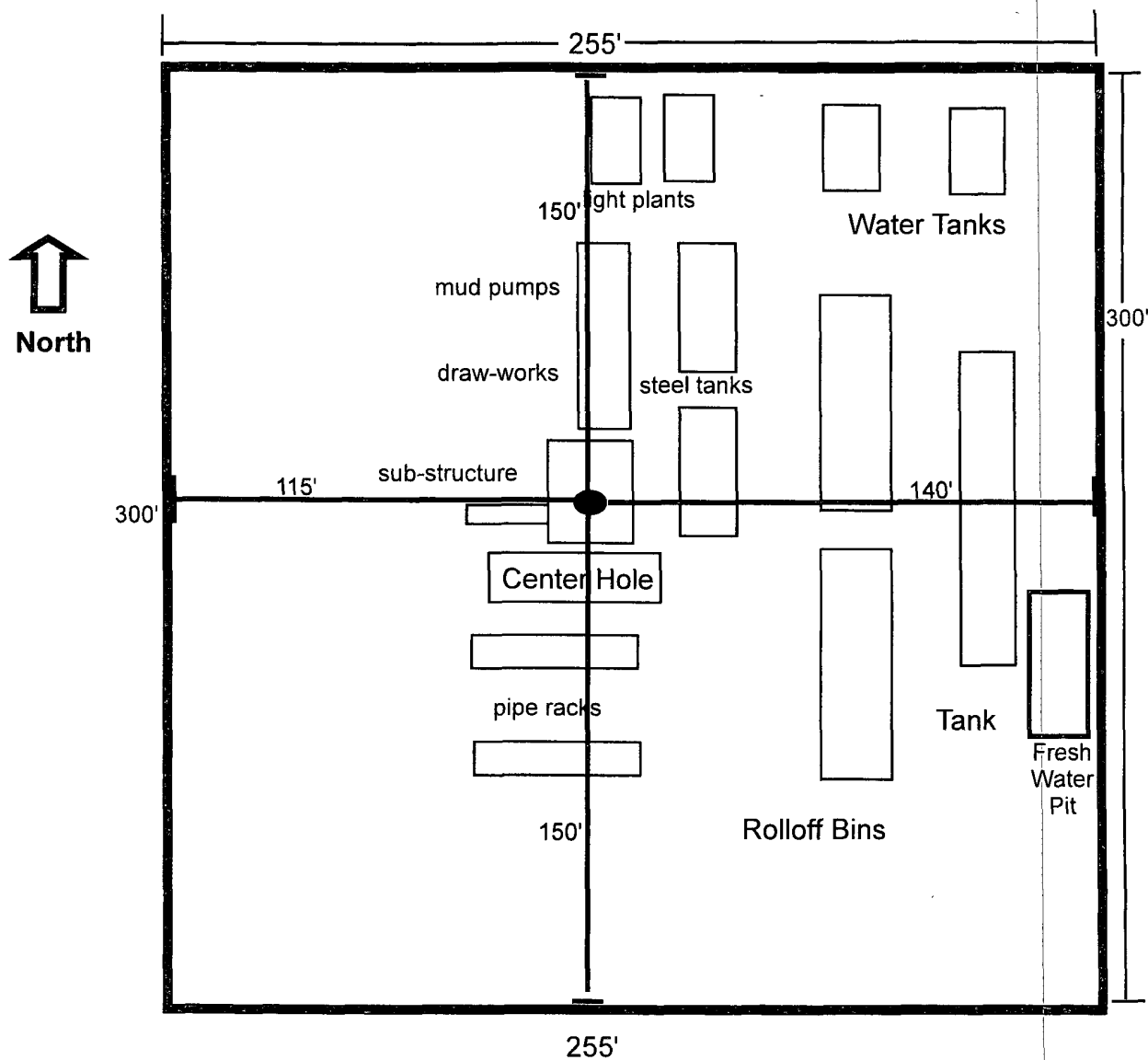
## **11. Potential Hazards:**

- a. No abnormal pressures or temperatures are expected. There is no known presence of H<sub>2</sub>S in this area. If H<sub>2</sub>S is encountered the operator will comply with the provisions of Onshore Oil and Gas Order No. 6. No lost circulation is expected to occur. All personnel will be familiar with all aspects of safe operation of equipment being used to drill this well. Estimated BHP: 2483.52 psi. Estimated BHT: 120°. No H<sub>2</sub>S is anticipated to be encountered.

## **12. Anticipated starting date and Duration of Operations:**

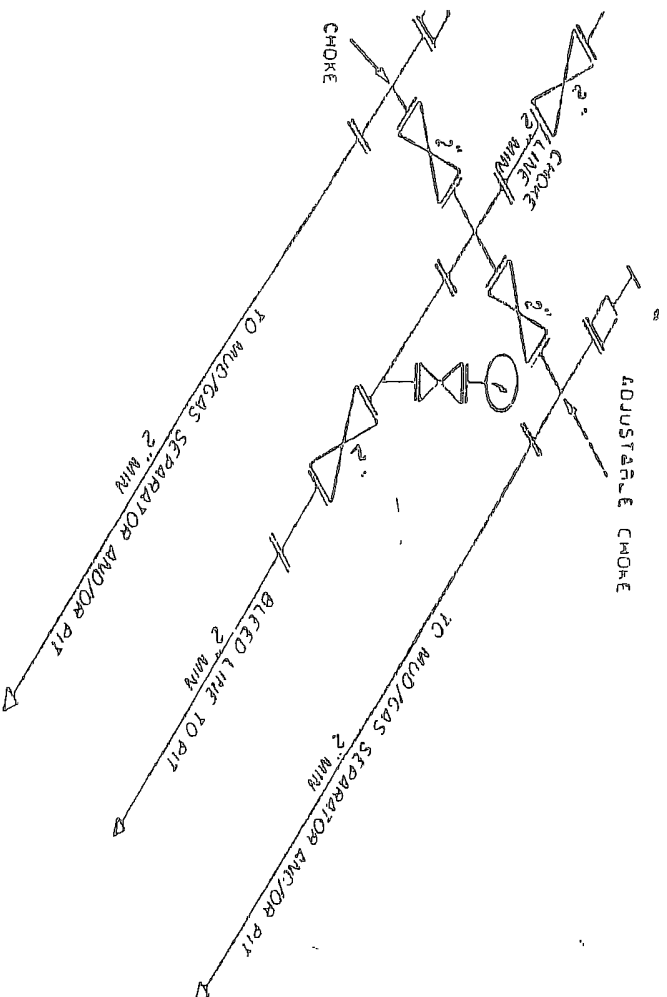
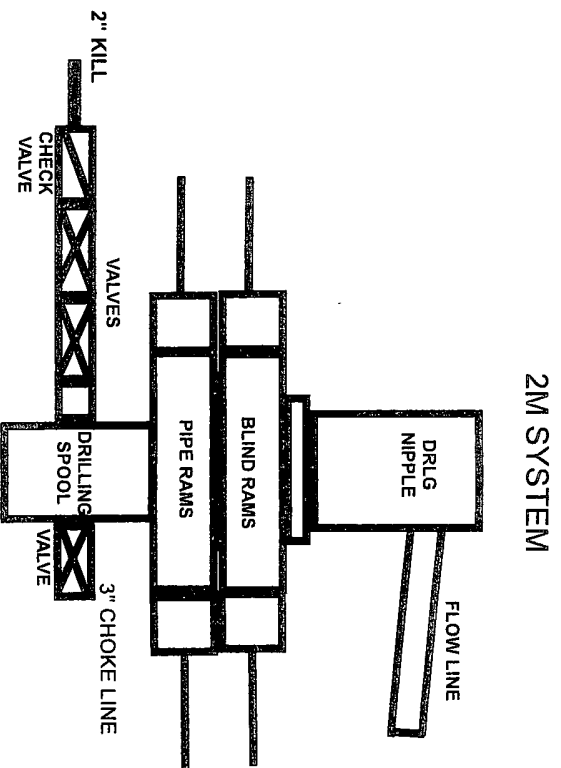
- a. Road and location construction will begin after the BLM has approved the APD. Anticipated spud date will be as possible after BLM approval and as soon as a rig will be available. Move in operations and drilling is expected to take 15 days.

# Well Site Lay-Out Plat



Tyler Federal #3  
690' FNL & 330' FEL  
Section 21, T17S, R30E  
Eddy County, New Mexico

EXHIBIT THREE



A CHOKE MANIFOLD EQUIPMENT — CONFIGURATION OF CHOKES

MAY VARY



## **MARBOB ENERGY CORPORATION**

### **HYDROGEN SULFIDE DRILLING OPERATIONS PLAN**

#### **I. HYDROGEN SULFIDE TRAINING**

All personnel, whether regularly assigned, contracted, or employed on an unscheduled basis, will receive training from a qualified instructor in the following areas prior to commencing drilling operations on this well:

- A. The hazards and characteristics of hydrogen sulfide (H<sub>2</sub>S).
- B. The proper use and maintenance of personal protective equipment and life support systems.
- C. The proper use of H<sub>2</sub>S detectors, alarms, warning systems, briefing areas, evacuation procedures, and prevailing winds.
- D. The proper techniques for first aid and rescue procedures.

In addition, supervisory personnel will be trained in the following areas:

- A. The effects of H<sub>2</sub>S on metal components. If high tensile tubulars are to be used, personnel will be trained in their special maintenance requirements.
- B. Corrective action and shut-in procedures when drilling or reworking a well and blowout prevention and well control procedures.
- C. The contents and requirements of the H<sub>2</sub>S Drilling Operations Plan and the Public Protection Plan.

There will be an initial training session just prior to encountering a known or probable H<sub>2</sub>S zone (within 3 days or 500 feet) and weekly H<sub>2</sub>S and well control drills for all personnel in each crew. The initial training session shall include a review of the site specific H<sub>2</sub>S Drilling Operations Plan and the Public Protection Plan. This plan shall be available at the well site. All personnel will be required to carry documentation that they have received the proper training.

## **II. H<sub>2</sub>S SAFETY EQUIPMENT AND SYSTEMS**

Note: All H<sub>2</sub>S safety equipment and systems will be installed, tested, and operational when drilling reaches a depth of 500 feet above, or three days prior to penetrating the first zone containing or reasonably expected to contain H<sub>2</sub>S.

### **A. Well Control Equipment:**

Flare line.

Choke manifold.

Blind rams and pipe rams to accommodate all pipe sizes with properly sized closing unit.

Auxiliary equipment to include: annular preventer, mud-gas separator, rotating head.

### **B. Protective equipment for essential personnel:**

Mark II Surviveair 30-minute units located in the dog house and at briefing areas.

### **C. H<sub>2</sub>S detection and monitoring equipment:**

2 - portable H<sub>2</sub>S monitor positioned on location for best coverage and response. These units have warning lights and audible sirens when H<sub>2</sub>S levels of 20 ppm are reached.

### **D. Visual warning systems:**

Caution/Danger signs shall be posted on roads providing direct access to location. Signs will be painted a high visibility yellow with black lettering of sufficient size to be readable at a reasonable distance from the immediate location. Bilingual signs will be used, when appropriate. See example attached.

E. Mud Program:

The mud program has been designed to minimize the volume of H<sub>2</sub>S circulated to the surface.

F. Metallurgy:

All drill strings, casings, tubing, wellhead, blowout preventers, drilling spool, kill lines, choke manifold and lines, and valves shall be suitable for H<sub>2</sub>S service.

G. Communication:

Company vehicles equipped with cellular telephone and 2-way radio.

# **W A R N I N G**

**YOU ARE ENTERING AN H<sub>2</sub>S AREA  
AUTHORIZED PERSONNEL ONLY**

- 1. BEARDS OR CONTACT LENSES NOT ALLOWED***
- 2. HARD HATS REQUIRED***
- 3. SMOKING IN DESIGNATED AREAS ONLY***
- 4. BE WIND CONSCIOUS AT ALL TIMES***
- 5. CK WITH MARBOB FOREMAN AT MAIN OFFICE***

**MARBOB ENERGY CORPORATION**

**1-505-748-3303**

**MARBOB ENERGY CORPORATION**  
**MULTI-POINT SURFACE USE AND OPERATIONS PLAN**

**Tyler Federal #3**  
**690' FNL & 330' FWL,**  
**Section 21, T17S, R30E**  
**Eddy County, New Mexico**

This plan is submitted with Form 3160-3, Application for Permit to Drill, covering the above described well. The purpose of this plan is to describe the location of the proposed well, the proposed construction activities and operations plan, the magnitude of the surface disturbance involved and the procedures to be followed in rehabilitating the surface after completion of the operations, so that a complete appraisal can be made of the environmental effect associated with the operations.

**1. EXISTING ROADS:**

- a. The well site and elevation plat for the proposed well are reflected on the well site layout; Form C-102. The well was staked by John West Surveying Company.
- b. Exhibit 2 is a portion of a topo map showing the well and roads in the vicinity of the proposed location. The proposed wellsite and the access route to the location are indicated in red on Exhibit 2.
- c. Routine grading and maintenance of existing roads will be conducted as necessary to maintain their condition as long as any operations continue on this lease.

**DIRECTIONS:**

From the intersection of U.S. Highway #82 and Co. Rd. #217 (Hagerman Cutoff), Go north on Co. Rd. #217 approx. 0.5 miles. Turn right on caliche road and go east approx. 250 feet. This location is approximately 185 feet south.

**2. PLANNED ACCESS ROAD:**

There is no new proposed access road. The location is approximately 185 feet south of the above described caliche road.

**3. LOCATION OF EXISTING AND/OR PROPOSED FACILITIES:**

- A. In the event the well is found productive, the Tyler Federal #3 tank battery would be utilized and the necessary production equipment will be installed at the well site. A Site Facilities Diagram will be submitted upon completion of facility.
- B. All flowlines will adhere to API standards
- C. If electricity is needed, power will be obtained from Central Valley Electric. Central Valley Electric will apply for ROW for their power lines.
- D. If the well is productive, rehabilitation plans are as follows:
  - i. The original topsoil from the well site will be returned to the location. The drill site will then be contoured as close as possible to the original state.

**4. LOCATION AND TYPES OF WATER SUPPLY:**

This location will be drilled using a combination of water mud systems (outlined in the Drilling Program). The water will be obtained from commercial water stations in the area and hauled to location by transport truck using the existing and proposed roads shown in Exhibit #2. On occasion, water will be obtained from a pre-existing water well, running a pump directly to the drill rig. In these cases where a poly pipeline is used to transport water for drilling purposes, the existing and proposed road shown in Exhibit "2" will be utilized.

**5. CONSTRUCTION MATERIALS:**

All Caliche utilized for the drilling pad and proposed access road will be obtained from an existing BLM approved pit or from prevailing deposits found under the location. All roads will be constructed of 6" rolled and compacted caliche. Will use BLM recommended use of extra caliche from other locations close by for roads, if available.

**6. METHODS OF HANDLING WASTE MATERIAL:**

- a. All trash, junk and other waste material will be removed from the wellsite within 30 days after finishing drilling and/or completion operations. All waste material will be contained in trash cages or trash bins to prevent scattering. When the job is completed, all contents will be removed and disposed of in an approved sanitary landfill.
- b. The supplier, including broken sacks, will pick up slats remaining after completion of well.
- c. A porto-john will be provided for the rig crews. This equipment will be properly maintained during the drilling and completion operations and will be removed when all operations are complete.
- d. Disposal of fluids to be transported by an approved disposal company.

**7. ANCILLARY FACILITIES:**

No campsite or other facilities will be constructed as a result of this well.

**8. WELLSITE LAYOUT:**

- a. Exhibit 3 shows the proposed well site layout with dimensions of the pad layout.
- b. This exhibit indicates proposed location of reserve and sump pits if utilized and living facilities.
- c. Mud pits in the active circulating system will be steel pits and a closed loop system will be utilized.

**9. PLANS FOR SURFACE RECLAMATION:**

- a. After finishing drilling and/or completion operations, if the well is found non-commercial, the caliche will be removed from the pad and transported to the original caliche pit or used for other drilling locations. The road will be reclaimed as directed by the BLM. The original top soil will again be returned to the pad and contoured, as close as possible, to the original state.
- b. The location and road will be rehabilitated as recommended by the BLM.
- c. If the well is deemed commercially productive, the reserve pit will be restored as described in 10(A) within 120 days subsequent to the completion date. Caliche from areas of the pad site not required for operations will be reclaimed. The original top soil will be returned to the area of the drill pad not necessary to operate the well. These unused areas of the drill pad will be contoured, as close as possible, to match the original topography.

**10. SURFACE OWNERSHIP:**

The surface is owned by the US Government and is administered by the Bureau of Land Management. The surface is multiple use with the primary uses of the region for the grazing of livestock and the production of oil and gas. The proposed road routes and the surface location will be restored as directed by the BLM.

**11. OTHER INFORMATION:**

- a. The area surrounding the well site is grassland. The topsoil is very sandy in nature. The vegetation is moderately sparse with native prairie grass, some mesquite bushes and shinnery oak. No wildlife was observed but it is likely that deer, rabbits, coyotes, and rodents traverse the area.
- b. There is no permanent or live water in the general proximity of the location.
- c. There are no dwellings within 2 miles of location.
- d. A Cultural Resources Examination will be completed by Boone Archeological and forwarded to the BLM office in Carlsbad, New Mexico.

**12. OPERATOR'S REPRESENTATIVE:**

A. Through A.P.D. Approval:

Dean Chumbley, Landman  
Marbob Energy Corporation  
P. O. Box 227  
Artesia, NM 88211-0227  
Phone (505)748-3303  
Cell (505) 748-5988

B. Through Drilling Operations

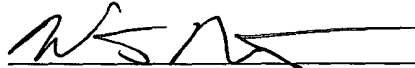
Sheryl Baker, Drilling Supervisor  
Marbob Energy Corporation  
P. O. Box 227  
Artesia, NM 88211-0227  
Phone (505)748-3303  
Cell (505)748-5489

**CERTIFICATION:**

I hereby certify that I, or persons under my direct supervision, have inspected the proposed drillsite and access route, that I am familiar with the conditions which presently exist; that the statements made in this plan are to the best of my knowledge, true and correct; and that the work associated with the operations proposed herein will be performed by Marbob Energy Corporation and its contractors and subcontractors in conformity with this plan and the terms and conditions under which it is approved. This statement is subject to the provisions of 18 U.S.C. 1001 for the filing of a false statement.

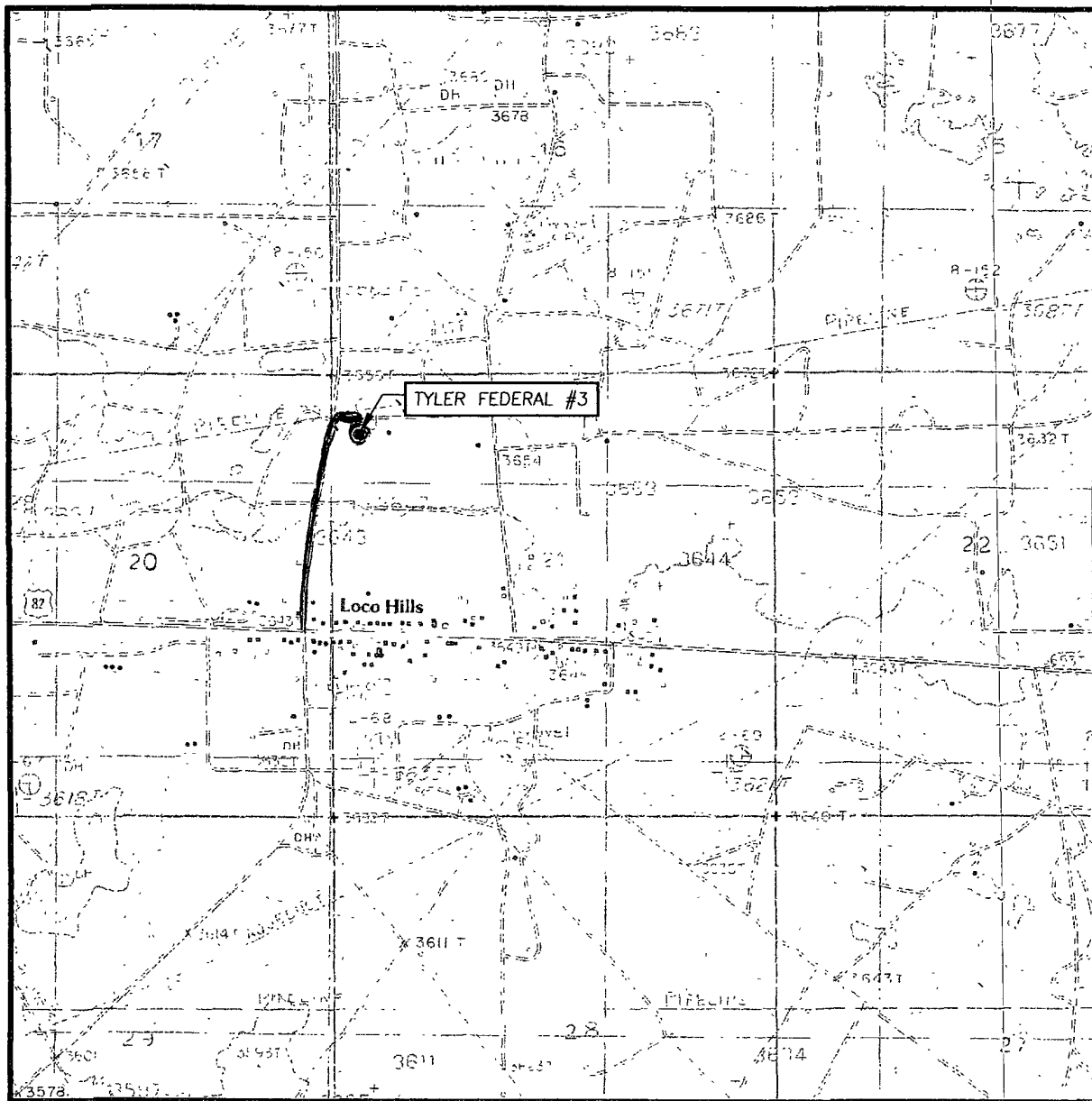
12/26/2007  
Date

Marbob Energy Corporation



William Miller  
Land Department

# LOCATION VERIFICATION MAP



SCALE: 1" = 2000'

CONTOUR INTERVAL:  
LOCO HILLS, N.M. - 10'

SEC. 21 TWP. 17-S RGE. 30-E

SURVEY                      N.M.P.M.

COUNTY EDDY STATE NEW MEXICO

DESCRIPTION 690' FNL & 330' FWL

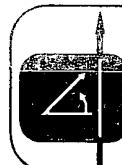
ELEVATION                      3656'

OPERATOR MARBOB ENERGY CORPORATION

LEASE TYLER FEDERAL

U.S.G.S. TOPOGRAPHIC MAP  
LOCO HILLS, N.M.

 Existing Roads



PROVIDING SURVEYING SERVICES  
SINCE 1946

**JOHN WEST SURVEYING COMPANY**

412 N. DAL PASO  
HOBBS, N.M. 88240  
(505) 393-3117

## EXHIBIT #2



Windfohr 8  
13-8 U.S.  
ck Ener. Gissler  
ndell: Feb.

Welch  
Fed-Gulf  
103475  
326703

Chevron GP II Ener. 9-B  
056551 (Square Lk. Primers) 9-B  
"NEKER-FED" 029342 etal) 9-B  
3-CB 7-B 8-B  
P110 P86

(Hexaco, et al)  
 074935  
 S-A  
 GP II Ener.  
 (Square Lk.  
 Ptnrs, et al)  
 P33 J-A  
 (PWB)  
 "Loco Hills: Fed

(Phillips) 3  
 2F 074937  
 "F"  
 Phillips  
 Parke-Fed Mack Ener.  
 Gen.  
 Am.

Lochart  
Parke  
TO 3528  
20

**МАСК ЕНБГ.**

**Mark Flier**

**Tidewater Mock**

\_\_\_\_\_

100

\_\_\_\_\_

[illegible]

Handel-St 5-1 (172103) Energy  
3-2 8-2130 U-11 "BE"  
W. State (DW)  
B-1568 "Texaco"  
9-C 10 W-1  
2008-6-1 27-C 107008 14-8 Mack En  
6-2 7-C 18-71-81 (Pitch)  
8-C (Texaco) 11-C 12-C 6-8 01  
St. of N.M. 3-7 6-2 (TERT)  
2-A 02 (W.A.)  
Mack En. 3-2 119 Pawnee St.  
Wichita-St. (26) 4-2  
Mack En.  
Christ- 2  
Engen 3-6  
Pet. 3-1  
6-1-99 4-1  
6-4-98 4-4  
6-25-99 13-3  
Collier  
McCollough-St  
State

(Texaco, et al) 0  
3.0 074935  
G.A. 9.A  
GP II Ener.  
8.A 7  
"Loco Hills - Fed  
Go west Premierch  
Roy., (SIR) 36 (ARCO  
Premier. 10004575  
Prod. 10-H Tr. B  
0384577 Mack  
McIntire Showme  
Premier Prod. et al  
(ARCO) 10004575  
0384575 "A"  
11.B Tr. 2 par

Premier Prod, etal  
5 (ARCO) (7) 1  
0467933 (W0)  
P110  
Phillips  
Grayburg  
Dp. U  
P120  
Parke  
Premier  
(PC Ltd.) (ARCO)  
029020  
Dexter Parke  
Premier etal  
(ARCO) (ARCO)  
0467933 (ARCO)  
C  
Parke

Burne  
● 23  
\* 8"  
Burn  
(Nash  
0749  
● 25  
Mack  
Mohaw  
fed 22  
10 OCT  
055299  
02-  
Flint

11 (P18) 3 (Phillips) 4 Mock En.  
K Ener 025342 1 (00)  
"8" 10  
154988 (Sowest) 3 Marbob 4 C  
(Roy, SR) 2 Thunder 02 342  
Fed. 2 3765  
(00)  
7 4  
Mock En. (P18) 1  
enking  
ad. Dist. 8  
"Jenkins" 6  
20 Dexter Fed tyre  
10 2 3 1  
K 5 Mock En.  
3 10467332 1 Mock En.  
5 13 "A" 4  
"B" 1 Belco 057634 10 Belco  
Dev 4 10 G McIntyre  
2 60 4 (P18) 5  
1 TO 3428 U.S. TD 6875 Double-1  
McIntyre 11, 300 Tex Pac 1  
Abodisc

Mack En 2  
 (Sinc) Salwest Res SR (Marbobb)  
 Tyler Fed Mack et al 705588  
 C. 012  
 McInture 054900  
 Sinclair 707000  
 Marboe 26  
 Repairs TD3740  
 Marboe El. Fe  
 McInture Fed.  
 03-H  
 2137 (F. Pool)  
 21054551  
 Chambers P  
 029342  
 Mack  
 1000-A  
 Anadarko  
 3 X  
 Eastland  
 No. Fed.  
 McInture  
 "Woolley"

3 020 5  
 - Nadele 14693  
 18 Gussma 15 A  
 Brown  
 Crow Fed. Mac  
 Parke Fed. Sinc  
 6 13  
 Premier Mac  
 Parke Fed. Sinc  
 015  
 Parke  
 P33721  
 ARCO 01 330 4  
 Prem 12 34  
 16 Parke Sheppard  
 Fed. (E) 14  
 0487332 11  
 Nadele 11  
 Gussma 04-8  
 Brown Op. 1-1  
 2 Balca 1  
 2-312320

7 022  
 Premier of 023  
 029020 Prod.(Devon)  
 17  
 (Lowest Roy) Phillips  
 Marbob  
 Randy Fed "E" 22  
 "Arke-Fed." 3  
 2 E 1  
 Jack 7 Marbob 9  
 Ken Fed 3  
 24 "Dexter" 1  
 MNA Est. IPCEO  
 028922 Wood 6  
 7202  
 10 10 2  
 5 22 R

Premier  
 et al  
 A.R.Co.  
 Mack Eng.  
 15 West  
 Bay  
 605 20  
 "8" 1  
 10  
 Adorak  
 London  
 28020  
 2 5  
 3  
 Parks  
 Parkers  
 Parkers  
 4

JACK  
 ner.  
 028936  
 T.P.C.O.  
 WOOLEY  
 07000  
 OAH 24-60  
 0336  
 son.  
 er.  
 etal  
 0336  
 Frankin etal  
 Deeson  
 703440  
 GP II  
 Frankin etal etal  
 Fed  
 203485  
 I-EX  
 17AC 1763  
 Hudson Fed  
 29  
 Anc darko  
 LOCOHILLS-  
 7-0 Fed  
 Wooley  
 U.S. 90  
 Wooley  
 703912  
 Shahara  
 28-23  
 Anadarko  
 12-17-62  
 13212  
 0336 23  
 028936  
 Wooley  
 Deeson

AR Co  
H.B.

Mack  
Ener.

Marbob  
EL Fed

Phillip

028936

Enron

GP II  
Ener. et al

028936

(Woolley  
Woolley  
TO 358)

28

U.S.

Shahara Oil

0532

2

3-MA

•Ty

MA

Phillip

39

TASS

Shahara Oil

028936

Meddren

Shahara Oil  
LEAD 10-AD  
060572  
(R. Aston Star)  
1/2 D/R)  
103171 Shahara Oil  
Exhibit #4  
Federal #3  
067934  
MB  
SHAHARA O  
G-J PERM  
SD L

028992  
 4  
 4  
 14-11 2  
 Penasco MNA Ent  
 5 059378 3  
 2  
 028992  
 7- Sargent  
 Penasco  
 96  
 2  
 6  
 "0"  
 028992  
 (OPEN)  
 5 Gen. Amer.  
 8 Madison Hwy  
 011574  
 1700

03 Pen  
110 028  
● 2V  
PENI  
otes Pei  
nder Lake  
ed Corp.  
- 1011A  
tate 4 8  
isc MIL  
Pen. Am  
93143  
Addre  
Ambie  
Penasco  
02433  
child

Ent, Gen Amer Newmon Chewran  
 2130 8 4108 HBP  
 State 8 4108  
 "Tall  
 Madge" Resert.  
 Pet 8 8 London  
 (nonf) Yates 6 8  
 5 A P 10318 1 A  
 Schu  
 Rich 8 8  
 4  
 32  
 8 8  
 Resler, et al  
 Taylor

120 GP II  
Ener 2-N  
etal  
Wooley  
Wooley  
to 4000  
T0325  
(Tex. Pac. Oil)  
528936  
Shahara Oil  
2467934  
(Phillips)  
HAP 0559581  
Made in U.S.A.  
1-Y mart to 1955  
Beeson-Fea  
"Fed"  
Armer Oil  
33  
GP II

Shahara Oil  
03R4573  
Anadarko  
Arnold Fed.  
Gen. Am.

Shahara  
PO BOX 261  
Shahara Oil  
HBP TD 3382  
0467034  
Genl Amer.  
050301P 3G  
ME INTURE  
TO 8400

Ben'l  
mer  
op 02 F  
60528  
Arnold  
J. 51  
AT-156  
R.R. 05  
station sta  
h -

# PECOS DISTRICT CONDITIONS OF APPROVAL

OPERATOR'S NAME:	Marbob Energy Corporation
LEASE NO.:	LC-029342C
WELL NAME & NO.:	3-Tyler Federal
SURFACE HOLE FOOTAGE:	690' FNL & 330' FWL
BOTTOM HOLE FOOTAGE	' F L & ' F L
LOCATION:	Section 21, T. 17 S., R 30 E., NMPM
COUNTY:	Eddy County, New Mexico

## TABLE OF CONTENTS

Standard Conditions of Approval (COA) apply to this APD. If any deviations to these standards exist or special COAs are required, the section with the deviation or requirement will be checked below.

- ☐ **General Provisions**
- ☐ **Permit Expiration**
- ☐ **Archaeology, Paleontology, and Historical Sites**
- ☐ **Noxious Weeds**
- ☒ **Special Requirements**
  - Lesser Prairie Chicken
  - Sand Dune Lizard
- ☒ **Construction**
  - Notification
  - Topsoil
  - Fresh Water Pit**
  - Federal Mineral Material Pits
  - Well Pads
  - Roads
- ☐ **Road Section Diagram**
- ☒ **Drilling**
- ☐ **Production (Post Drilling)**
  - Well Structures & Facilities
  - Pipelines
  - Electric Lines
- ☐ **Reserve Pit Closure/Interim Reclamation**
- ☐ **Final Abandonment/Reclamation**

## **I. GENERAL PROVISIONS**

The approval of the Application For Permit To Drill (APD) is in compliance with all applicable laws and regulations: 43 Code of Federal Regulations 3160, the lease terms, Onshore Oil and Gas Orders, Notices To Lessees, New Mexico Oil Conservation Division (NMOCD) Rules, National Historical Preservation Act As Amended, and instructions and orders of the Authorized Officer. Any request for a variance shall be submitted to the Authorized Officer on Form 3160-5, Sundry Notices and Report on Wells.

## **II. PERMIT EXPIRATION**

If the permit terminates prior to drilling and drilling cannot be commenced within 60 days after expiration, an operator is required to submit Form 3160-5, Sundry Notices and Reports on Wells, requesting surface reclamation requirements for any surface disturbance. However, if the operator will be able to initiate drilling within 60 days after the expiration of the permit, the operator must have set the conductor pipe in order to allow for an extension of 60 days beyond the expiration date of the APD. (Filing of a Sundry Notice is required for this 60 day extension.)

## **III. ARCHAEOLOGICAL, PALEONTOLOGY & HISTORICAL SITES**

Any cultural and/or paleontological resource discovered by the operator or by any person working on the operator's behalf shall immediately report such findings to the Authorized Officer. The operator is fully accountable for the actions of their contractors and subcontractors. The operator shall suspend all operations in the immediate area of such discovery until written authorization to proceed is issued by the Authorized Officer. An evaluation of the discovery shall be made by the Authorized Officer to determine the appropriate actions that shall be required to prevent the loss of significant cultural or scientific values of the discovery. The operator shall be held responsible for the cost of the proper mitigation measures that the Authorized Officer assesses after consultation with the operator on the evaluation and decisions of the discovery. Any unauthorized collection or disturbance of cultural or paleontological resources may result in a shutdown order by the Authorized Officer.

## **IV. NOXIOUS WEEDS**

The operator shall be held responsible if noxious weeds become established within the areas of operations. Weed control shall be required on the disturbed land where noxious weeds exist, which includes the roads, pads, associated pipeline corridor, and adjacent land affected by the establishment of weeds due to this action. The operator shall consult with the Authorized Officer for acceptable weed control methods, which include following EPA and BLM requirements and policies.

## **V. SPECIAL REQUIREMENT(S)**

Mitigation Measures: The standard stipulations for the Lesser Prairie Chickens. Timing Limitation Stipulation / Condition of Approval for lesser prairie-chicken: Oil and gas activities including 3-D geophysical exploration, and drilling will not be allowed in lesser prairie-chicken habitat during the period from March 15 through June 15 annually. During that period, other activities that produce noise or involve human activity, such as the maintenance of oil and gas facilities, pipeline, road, power line, and well pad construction, will be allowed except between 3:00 am and 9:00 am. The 3:00 am to 9:00 am restriction will not apply to normal, around-the-clock operations, such as venting, flaring, or pumping, which do not require a human presence during this period. Additionally, no new drilling will be allowed within up to 200 meters of leks known at the time of permitting. Normal vehicle use on existing roads will not be restricted. Exhaust noise from pump jack engines must be muffled or otherwise controlled so as not to exceed 75 db measured at 30 feet from the source of the noise.

## **VI. CONSTRUCTION**

### **A. NOTIFICATION**

The BLM shall administer compliance and monitor construction of the access road and well pad. Notify the Carlsbad Field Office at (505) 234-5972 at least 3 working days prior to commencing construction of the access road and/or well pad.

When construction operations are being conducted on this well, the operator shall have the approved APD and Conditions of Approval (COA) on the well site and they shall be made available upon request by the Authorized Officer.

### **B. TOPSOIL**

The operator shall stockpile the topsoil of the well pad. The topsoil to be stripped is approximately 6 inches in depth. The topsoil shall not be used to backfill the reserve pit and will be used for interim and final reclamation.

### **C. FRESH WATER PIT**

The fresh water pit shall be constructed and closed in accordance with the NMOCD rules.

The fresh water pit shall be constructed 100' X 150' X 6' on the East side of the well pad.

The fresh water pit shall be constructed and maintained so that runoff water from outside the location is not allowed to enter the pit. The berms surrounding the entire perimeter of the pit shall extend a minimum of two (2) feet above ground level. At no time will standing fluids in the pit be allowed to rise above ground level.

The fresh water pit shall be fenced on three (3) sides during drilling operations. The fourth side shall be fenced immediately upon rig release.

Tanks are required for drilling operations: No Pits.

The operator shall properly dispose of drilling contents at an authorized disposal site.

### **D. FEDERAL MINERAL MATERIALS PIT**

If the operator elects to surface the access road and/or well pad, mineral materials extracted during construction of the reserve pit may be used for surfacing the well pad and access road and other facilities on the lease.

Payment shall be made to the BLM prior to removal of any additional federal mineral materials from any site other than the reserve pit. Call the Carlsbad Field Office at (505) 234-5972.

## **E. WELL PAD SURFACING**

Surfacing of the well pad is not required.

If the operator elects to surface the well pad, the surfacing material may be required to be removed at the time of reclamation.

The well pad shall be constructed in a manner which creates the smallest possible surface disturbance, consistent with safety and operational needs.

## **F. ON LEASE ACCESS ROADS**

### **Road Width**

The access road shall have a driving surface that creates the smallest possible surface disturbance and does not exceed fourteen (14) feet in width. The maximum width of surface disturbance, when constructing the access road, shall not exceed thirty (30) feet.

### **Surfacing**

Surfacing material is not required on the new access road driving surface. If the operator elects to surface the new access road or pad, the surfacing material may be required to be removed at the time of reclamation.

Where possible, no improvements should be made on the unsurfaced access road other than to remove vegetation as necessary, road irregularities, safety issues, or to fill low areas that may sustain standing water.

The Authorized Officer reserves the right to require surfacing of any portion of the access road at any time deemed necessary. Surfacing may be required in the event the road deteriorates, erodes, road traffic increases, or it is determined to be beneficial for future field development. The surfacing depth and type of material will be determined at the time of notification.

### **Crowning**

Crowning shall be done on the access road driving surface. The road crown shall have a grade of approximately 2% (i.e., a 1" crown on a 14' wide road). The road shall conform to Figure 1; cross section and plans for typical road construction.

### **Ditching**

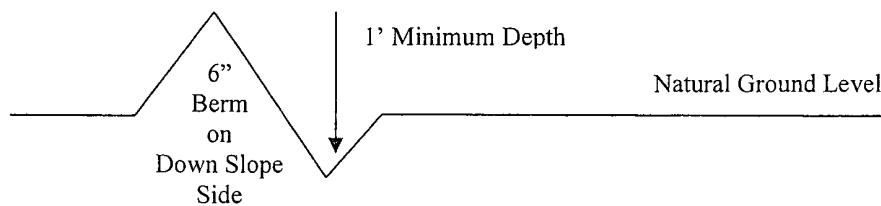
Ditching shall be required on both sides of the road.

Vehicle turnouts shall be constructed on the road. Turnouts shall be intervisible with interval spacing distance less than 1000 feet. Turnouts shall be constructed on all blind curves. Turnouts shall conform to the following diagram:

Diagram illustrating the cross-section of a road. The road surface is 14' high. The centerline of the road driving surface is marked. The road width is 50', and the ditch depth is 10'. The shoulders are 25' wide.

Drainage control systems shall be constructed on the entire length of road (e.g. ditches, sidehill outsloping and insloping, lead-off ditches, culvert installation, and low water crossings).

### Cross Section of a Typical Lead-off Ditch



Page 6 of 14

### **Formula for Spacing Interval of Lead-off Ditches**

Example - On a 4% road slope that is 400 feet long, the water flow shall drain water into a lead-off ditch. Spacing interval shall be determined by the following formula:

$$400 \text{ foot road with } 4\% \text{ road slope: } \frac{400'}{4\%} + 100' = 200' \text{ lead-off ditch interval}$$

### **Culvert Installations**

Appropriately sized culvert(s) shall be installed at the deep waterway channel flow crossing.

### **Cattleguards**

An appropriately sized cattleguard(s) sufficient to carry out the project shall be installed and maintained at fence crossing(s).

Any existing cattleguard(s) on the access road shall be repaired or replaced if they are damaged or have deteriorated beyond practical use. The operator shall be responsible for the condition of the existing cattleguard(s) that are in place and are utilized during lease operations.

A gate shall be constructed and fastened securely to H-braces.

### **Fence Requirement**

Where entry is required across a fence line, the fence shall be braced and tied off on both sides of the passageway prior to cutting.

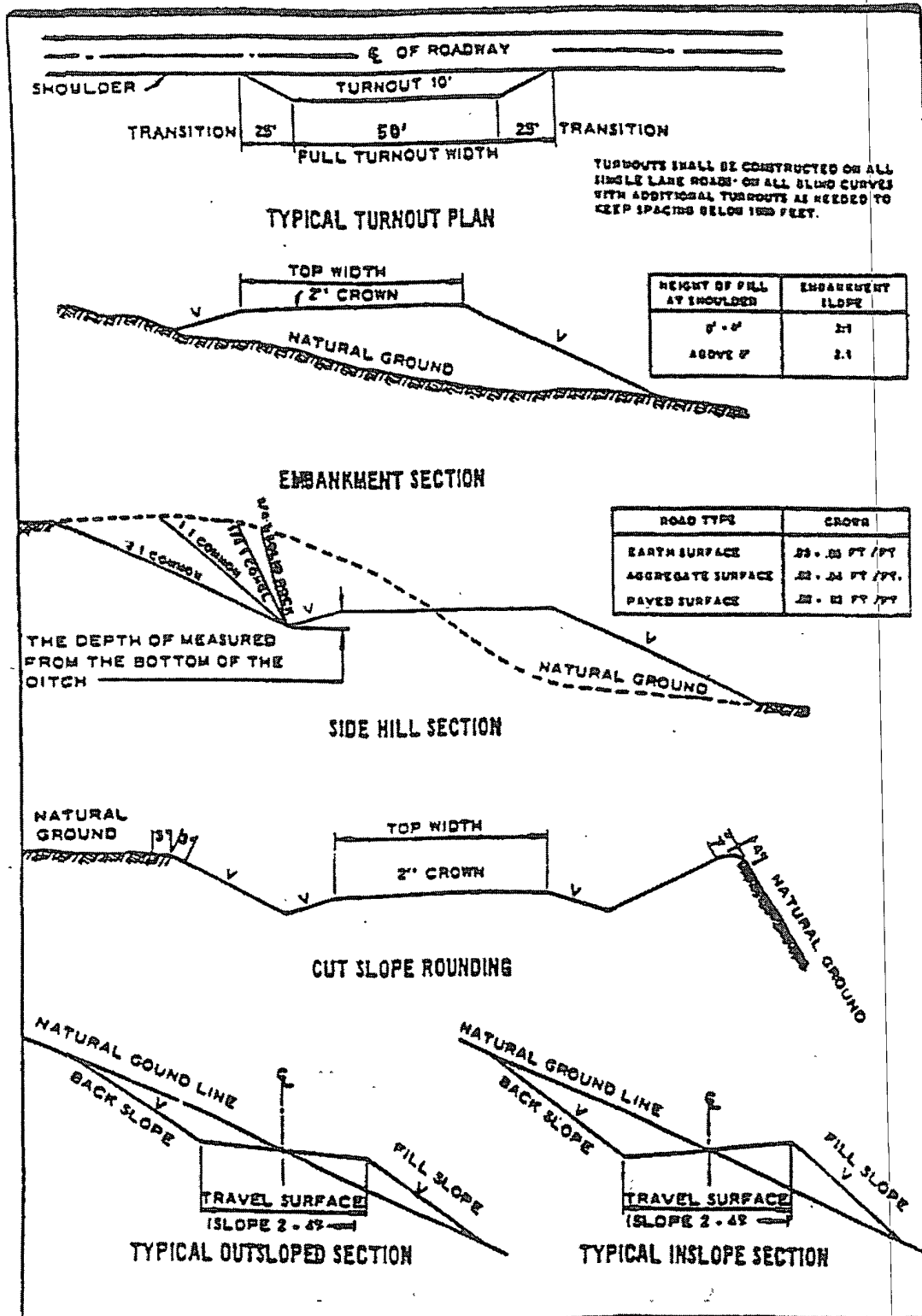
The operator shall notify the private surface landowner or the grazing allotment holder prior to crossing any fence(s).

### **Public Access**

Public access on this road shall not be restricted by the operator without specific written approval granted by the Authorized Officer.



Figure 1 – Cross Sections and Plans For Typical Road Sections



## VII. DRILLING

### A. DRILLING OPERATIONS REQUIREMENTS

The BLM is to be notified a minimum of 4 hours in advance for a representative to witness:

- a. Spudding well
- b. Setting and/or Cementing of all casing strings
- c. BOPE tests

☒ **Eddy County**

Call the Carlsbad Field Office, 620 East Greene St., Carlsbad, NM 88220,  
(575) 361-2822

1. A Hydrogen Sulfide (H<sub>2</sub>S) Drilling Plan should be activated 500 feet prior to drilling into the **Seven Rivers** formation. **H<sub>2</sub>S has been reported in sections 17, 20 and 21 from the Fren Seven Rivers and Grayburg Jackson pool measuring 1600-10000 ppm in gas streams and 20-4000 ppm in STVs.**
2. Unless the production casing has been run and cemented or the well has been properly plugged, the drilling rig shall not be removed from over the hole without prior approval.

### B. CASING

**Changes to the approved APD casing and cement program require submitting a sundry and receiving approval prior to work.**

1. The 8-5/8 inch surface casing shall be set **a minimum of 25 feet into the Rustler Anhydrite and above the salt at approximately 400 feet** and cemented to the surface.
  - a. If cement does not circulate to the surface, the appropriate BLM office shall be notified and a temperature survey utilizing an electronic type temperature survey with a surface log readout will be used or a cement bond log shall be run to verify the top of the cement.
  - b. Wait on cement (WOC) time for a primary cement job will be a minimum 18 hours for a water basin, 24 hours in the potash area, or 500 pounds compressive strength, whichever is greater. (This is to include the lead cement). **Please provide WOC times to inspector for cement slurries.**
  - c. Wait on cement (WOC) time for a remedial job will be a minimum of 4 hours after bringing cement to surface or 500 pounds compressive strength, whichever is greater.

- d. If cement falls back, remedial action will be done prior to drilling out that string.

**Possible lost circulation in the Grayburg and San Andres formations.  
Possible water flows in the Salado and Artesia Groups.**

2. The minimum required fill of cement behind the **5-1/2** inch production casing is:

☒ Cement to surface. If cement does not circulate, contact the appropriate BLM office.

3. If hardband drill pipe is rotated inside casing, returns will be monitored for metal. If metal is found in samples, drill pipe will be pulled and rubber protectors which have a larger diameter than the tool joints of the drill pipe will be installed prior to continuing drilling operations.

**C. PRESSURE CONTROL**

1. All blowout preventer (BOP) and related equipment (BOPE) shall comply with well control requirements as described in Onshore Oil and Gas Order No. 2 and API RP 53 Sec. 17.
2. The appropriate BLM office shall be notified a minimum of 4 hours in advance for a representative to witness the tests.
  - a. The tests shall be done by an independent service company.
  - b. The results of the test shall be reported to the appropriate BLM office.
  - c. All tests are required to be recorded on a calibrated test chart. A copy of the BOP/BOPE test chart and a copy of independent service company test will be submitted to the appropriate BLM office.
  - d. The BOP/BOPE test shall include a low pressure test from 250 to 300 psi. The test will be held for a minimum of 10 minutes if test is done with a test plug and 30 minutes without a test plug.
  - e. **No variance granted for test with rig pumps when casing program includes only two casing strings.**

**D. DRILL STEM TEST**

If drill stem tests are performed, Onshore Order 2.III.D shall be followed.

**Engineer on call phone (after hours):      Carlsbad: (575) 706-2779  
WWI 012808**

## **VIII. PRODUCTION (POST DRILLING)**

### **A. WELL STRUCTURES & FACILITIES**

#### **Placement of Production Facilities**

Production facilities should be placed on the well pad to allow for maximum interim recontouring and revegetation of the well location.

#### **Containment Structures**

The containment structure shall be constructed to hold the capacity of the entire contents of the largest tank, plus 24 hour production, unless more stringent protective requirements are deemed necessary by the Authorized Officer.

#### **Painting Requirement**

All above-ground structures including meter housing that are not subject to safety requirements shall be painted a flat non-reflective paint color  
Shale Green, Munsell Soil Color Chart # 5Y 4/2

#### **VRM Facility Requirement**

### **B. PIPELINES**

### **C. ELECTRIC LINES**

## **IX. INTERIM RECLAMATION & RESERVE PIT CLOSURE**

### **A. INTERIM RECLAMATION**

If the well is a producer, interim reclamation shall be conducted on the well site in accordance with the orders of the Authorized Officer. The operator shall submit a Sundry Notices and Reports on Wells (Notice of Intent), Form 3160-5, prior to conducting interim reclamation.

During the life of the development, all disturbed areas not needed for active support of production operations should undergo interim reclamation in order to minimize the environmental impacts of development on other resources and uses.

At the time reserve pits are to be reclaimed, operators should work with BLM surface management specialists to devise the best strategies to reduce the size of the location. Any reductions should allow for remedial well operations, as well as safe and efficient removal of oil and gas.

During reclamation, the removal of caliche is important to increasing the success of revegetating the site. Removed caliche may be used for road repairs, fire walls or for building other roads and locations. In order to operate the well or complete workover operations, it may be necessary to drive, park and operate on restored interim vegetation within the previously disturbed area. Disturbing revegetated areas for production or workover operations will be allowed. If there is significant disturbance and loss of vegetation, the area will need to be revegetated. Communicate with the appropriate BLM office for any exceptions/exemptions if needed.

### **B. FRESH WATER PIT CLOSURE**

The fresh water pit, when dried and closed, shall be recontoured, all trash removed, and reseeded as follows:

## Seed Mixture for LPC Sand/Shinnery Sites

The holder shall seed all disturbed areas with the seed mixture listed below. The seed mixture shall be planted in the amounts specified in pounds of pure live seed (PLS)\* per acre. There shall be no primary or secondary noxious weeds in the seed mixture. Seed will be tested and the viability testing of seed will be done in accordance with State law(s) and within nine (9) months prior to purchase. Commercial seed will be either certified or registered seed. The seed container will be tagged in accordance with State law(s) and available for inspection by the authorized officer.

Seed will be planted using a drill equipped with a depth regulator to ensure proper depth of planting where drilling is possible. The seed mixture will be evenly and uniformly planted over the disturbed area (smaller/heavier seeds have a tendency to drop the bottom of the drill and are planted first). The holder shall take appropriate measures to ensure this does not occur. Where drilling is not possible, seed will be broadcast and the area shall be raked or chained to cover the seed. When broadcasting the seed, the pounds per acre are to be doubled. The seeding will be repeated until a satisfactory stand is established as determined by the authorized officer. Evaluation of growth will not be made before completion of at least one full growing season after seeding.

Species to be planted in pounds of pure live seed\* per acre:

<u>Species</u>	<u>lb/acre</u>
Plains Bristlegrass	5lbs/A
Sand Bluestem	5lbs/A
Little Bluestem	3lbs/A
Big Bluestem	6lbs/A
Plains Coreopsis	2lbs/A
Sand Dropseed	1lbs/A

\*\*Four-winged Saltbush 5lbs/A

\* This can be used around well pads and other areas where caliche cannot be removed.

\*Pounds of pure live seed:

Pounds of seed x percent purity x percent germination = pounds pure live seed

## **X. FINAL ABANDONMENT & REHABILITATION REQUIREMENTS**

Upon abandonment of the well and/or when the access road is no longer in service the Authorized Officer shall issue instructions and/or orders for surface reclamation and restoration of all disturbed areas.

On private surface/federal mineral estate land the reclamation procedures on the road and well pad shall be accomplished in accordance with the private surface land owner agreement.