

District I  
1625 N. French Dr., Hobbs, NM 88240  
District II  
1301 W. Grand Avenue, Artesia, NM 88210  
District III  
1000 Rio Brazos Road, Aztec, NM 87410  
District IV  
1220 S. St. Francis Dr., Santa Fe, NM 87505

State of New Mexico  
Energy Minerals and Natural Resources

Form C-101  
May 27, 2004

Oil Conservation Division  
1220 South St. Francis Dr.  
Santa Fe, NM 87505

Submit to appropriate District Office

MAY 12 2008

☐ AMENDED REPORT

OCD-ARTESIA

APPLICATION FOR PERMIT TO DRILL, RE-ENTER, DEEPEN, PLUGBACK, OR ADD A ZONE

<sup>1</sup> Operator Name and Address Rubicon Oil & Gas, LLC 508 W. Wall St. Ste 500 Midland, TX 79701		<sup>2</sup> OGRID Number 194266	
<sup>3</sup> Property Code 37170		<sup>4</sup> Property Name Momo 33	
<sup>5</sup> Proposed Pool 1 LAKELWOOD		<sup>6</sup> Proposed Pool 2	

UL or lot no.	Section	Township	Range	Lot Idn	Feet from the	North/South	Feet from the	East/West line	County
L	33	19S	26E		1980	South	800	WEST	EDDY

<sup>7</sup> Surface Location									
<sup>8</sup> Proposed Bottom Hole Location If Different From Surface									

<sup>11</sup> Work Type Code NEW WELL		<sup>12</sup> Well Type Code GAS		<sup>13</sup> Cable/Rotary ROTARY		<sup>14</sup> Lease Type Code PRIVATE		<sup>15</sup> Ground Level Elevation 3279'	
<sup>16</sup> Multiple NO		<sup>17</sup> Proposed Depth 9,950'		<sup>18</sup> Formation MORROW		<sup>19</sup> Contractor TBD		<sup>20</sup> Spud Date 6/1/2008	
Depth to Groundwater 95'				Distance from nearest fresh water well 1500'				Distance from nearest surface water > 1000'	
Pit: Liner: Synthetic X 12 mils thick Clay <input type="checkbox"/> Pit Volume: 5000 bbls Drilling Method: Closed-Loop System <input type="checkbox"/> Fresh Water <input checked="" type="checkbox"/> Brine <input type="checkbox"/> Diesel/Oil-based <input type="checkbox"/> Gas/Air <input type="checkbox"/>									

<sup>21</sup> Proposed Casing and Cement Program					
Hole Size	Casing Size	Casing weight/foot	Setting Depth	Sacks of Cement	Estimated TOC
17-1/2"	13-3/8"	48	350'	390	Surface
12-1/4"	9-5/8"	36	1600'	700	Surface
8-3/4"	4-1/2"	11.6	9950'	1850	1400'

<sup>22</sup> Describe the proposed program. If this application is to DEEPEN or PLUG BACK, give the data on the present productive zone and proposed new productive zone. Describe the blowout prevention program, if any. Use additional sheets if necessary.  
Mud Program - 0-350', MW 8.4-9.0 ppg FW Native spud mud, 350-7500' MW 8.4-8.6 ppg FW, 7500'-9800' MW 8.8-9.4 ppg Cutbrine w/ starch/polymer ✓  
BOPE - Diagram attached, Wellbore Diagram attached ✓  
H2S - No H2S seen in immediate area. Will have minimum compliance package setup prior to drilling out of 9-5/8" casing. ✓

NOTE: New Pit Rule  
NMAC 19-15-17

<sup>23</sup> I hereby certify that the information given above is true and complete to the best of my knowledge and belief. I further certify that the drilling pit will be constructed according to NMOC guidelines <input checked="" type="checkbox"/> a general permit <input type="checkbox"/> or an (attached) alternative OCD-approved plan <input type="checkbox"/> .		OIL CONSERVATION DIVISION	
Signature: <i>Hal Lee</i>		Approved by: <i>Jim W. Green</i>	
Printed name: Hal Lee		Title: <i>District II Supervisor</i>	
Title: Agent / Operations Manger		Approval Date: 5/19/08	
E-mail Address: hal@adventure-energy.com		Expiration Date: 5/19/10	
Date: 4/21/2008		Conditions of Approval Attached <input type="checkbox"/>	
Phone: 432-683-6565			

1940  
5-20-08  
Abu

## DISTRICT I

1625 N. French Dr., Hobbs, NM 88240

## DISTRICT II

1301 W. Grand Avenue, Artesia, NM 88210

## DISTRICT III

1000 Rio Brazos Rd., Aztec, NM 87410

## DISTRICT IV

1220 S. St. Francis Dr., Santa Fe, NM 87505

State of New Mexico  
Energy, Minerals and Natural Resources DepartmentOIL CONSERVATION DIVISION  
1220 South St. Francis Dr.  
Santa Fe, New Mexico 87505

Form C-102

Revised October 12, 2005

Submit to Appropriate District Office

State Lease - 4 Copies

Fee Lease - 3 Copies

☐ AMENDED REPORT

## WELL LOCATION AND ACREAGE DEDICATION PLAT

API Number 30-015-36322	Pool Code 97658	Pool Name Lakewood Morrow
Property Code 37170	Property Name MOMO "33"	Well Number 1
GRID No. 194266	Operator Name RUBICON OIL & GAS, L.L.C.	Elevation 3279'

## Surface Location

UL or lot No.	Section	Township	Range	Lot Idn	Feet from the	North/South line	Feet from the	East/West line	County
L	33	19 S	26 E		1980	SOUTH	800	WEST	EDDY

## Bottom Hole Location If Different From Surface

UL or lot No.	Section	Township	Range	Lot Idn	Feet from the	North/South line	Feet from the	East/West line	County

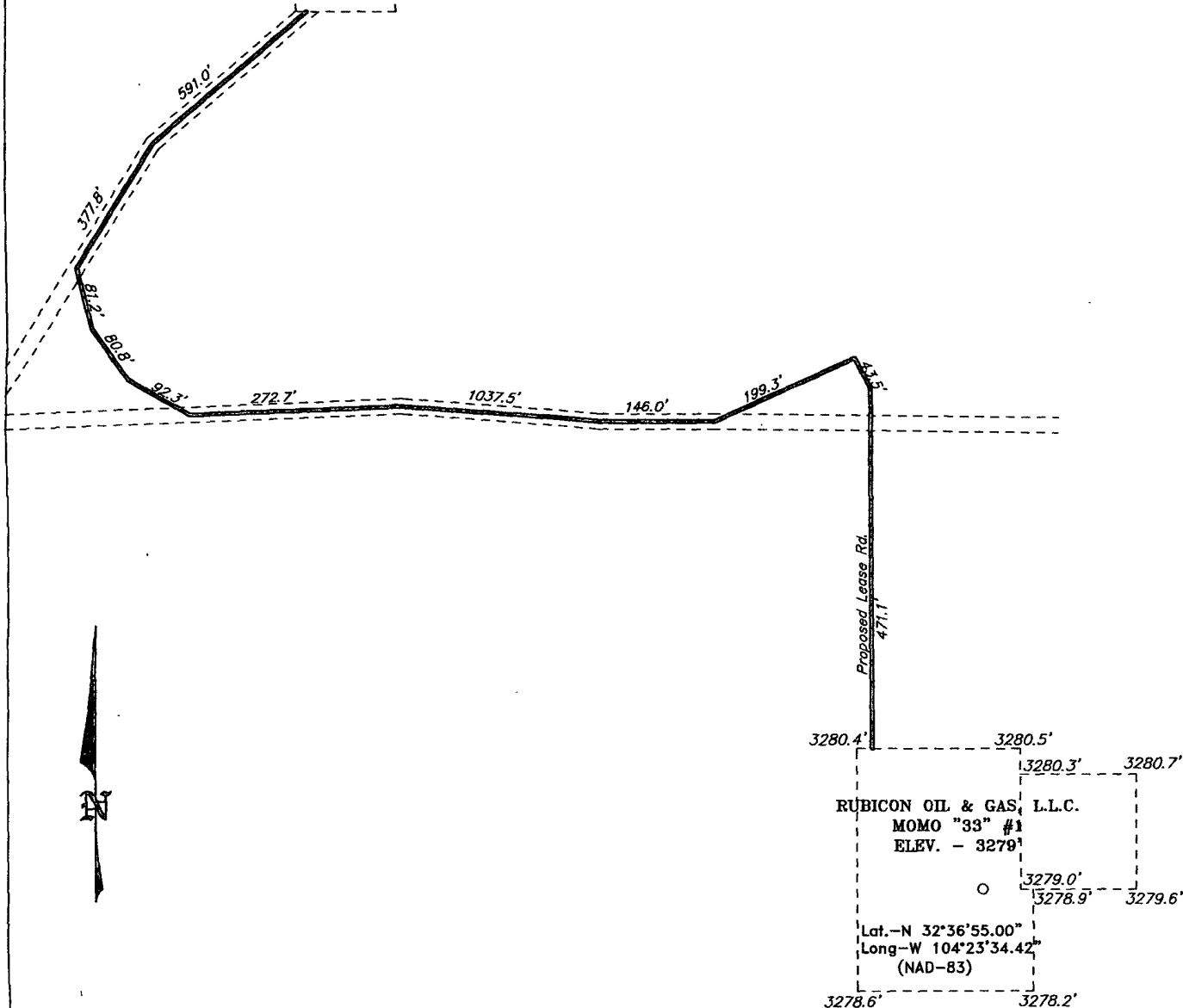
Dedicated Acres 320	Joint or Infill	Consolidation Code	Order No.
------------------------	-----------------	--------------------	-----------

NO ALLOWABLE WILL BE ASSIGNED TO THIS COMPLETION UNTIL ALL INTERESTS HAVE BEEN CONSOLIDATED  
OR A NON-STANDARD UNIT HAS BEEN APPROVED BY THE DIVISION

<p><b>SURFACE LOCATION</b>          Lat - N32°36'55.00"          Long - W104°23'34.42"          NMSPCE- N 587573.515          E 522998.970          (NAD-83)</p>	<b>OPERATOR CERTIFICATION</b> I hereby certify that the information contained herein is true and complete to the best of my knowledge and belief, and that this organization either owns a working interest or released mineral interest in the land including the proposed bottom hole location pursuant to a contract with an owner of such a mineral or working interest, or to a voluntary pooling agreement or a compulsory pooling order heretofore entered by the division.  Signature Date 4-25-08 Ann E. Ritchie, Agent Printed Name	
	<b>SURVEYOR CERTIFICATION</b> I hereby certify that the well location shown on this plat was plotted from field notes of actual surveys made by me or under my supervision, and that the same is true and correct to the best of my belief. FEBRUARY 14 2008 Date Surveyed  Signature of Professional Surveyor W.C. 2/14/08	
	Certificate No. Gary L. Jones 7977 BASIN SURVEYS	

SECTION 33, TOWNSHIP 19 SOUTH, RANGE 26 EAST, N.M.P.M.,  
EDDY COUNTY, NEW MEXICO.

LAKEWOOD  
"32" #1



Directions to Location:

FROM THE JUNCTION OF US HWY 285 AND CO. RD. 31, GO EAST ON CO. RD. 31 FOR APPROX. 1.2 MILES TO SWEETWATER ROAD; THENCE SOUTH FOR APPROX. 0.2 MILE TO A LEASE ROAD; THENCE WEST ON LEASE ROAD FOR APPROX 1.1 MILE TO EXISTING THE LAKEWOOD 32 #1; THENCE FOLLOW LEASE ROAD FOR APPROX. 0.2 MILE TO A "T" INTERSECTION; THENCE EAST FOR APPROX. 0.4 MILE TO A PROPOSED LEASE ROAD.

**BASIN SURVEYS** P.O. BOX 1786—HOBBS, NEW MEXICO

W.O. Number: 19184

Drawn By: K. GOAD

Date: 02-15-2008

Disk: KJG - 19184W.DWG

200 0 200 400 FEET  
SCALE: 1" = 200'

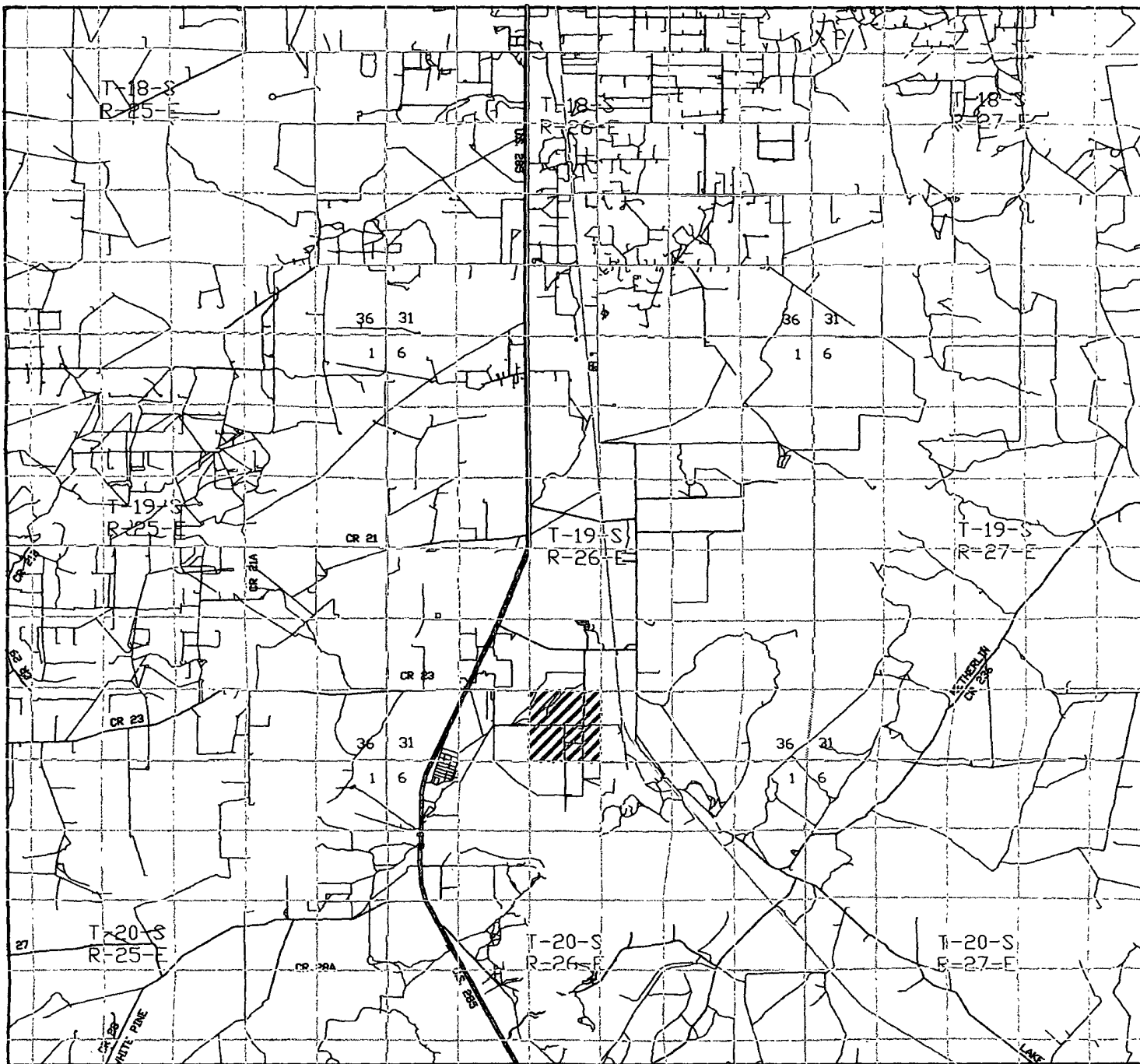
**RUBICON OIL & GAS, L.L.C.**

REF: MOMO "33" #1 / WELL PAD TOPO

THE MOMO "33" #1 LOCATED 1980' FROM  
THE SOUTH LINE AND 800' FROM THE WEST LINE OF  
SECTION 33, TOWNSHIP 19 SOUTH, RANGE 26 EAST,  
N.M.P.M., EDDY COUNTY, NEW MEXICO.

Survey Date: 02-14-2008

Sheet 1 of 1 Sheets



MOMO "33" #1

Located 1980' FSL and 800' FWL

Section 33, Township 19 South, Range 26 East,  
N.M.P.M., Eddy County, New Mexico.

**basin**  
**surveys**  
focused on excellence  
in the oilfield

P.O. Box 1786  
1120 N. West County Rd.  
Hobbs, New Mexico 88241  
(505) 393-7316 - Office  
(505) 392-3074 - Fax  
basinsurveys.com

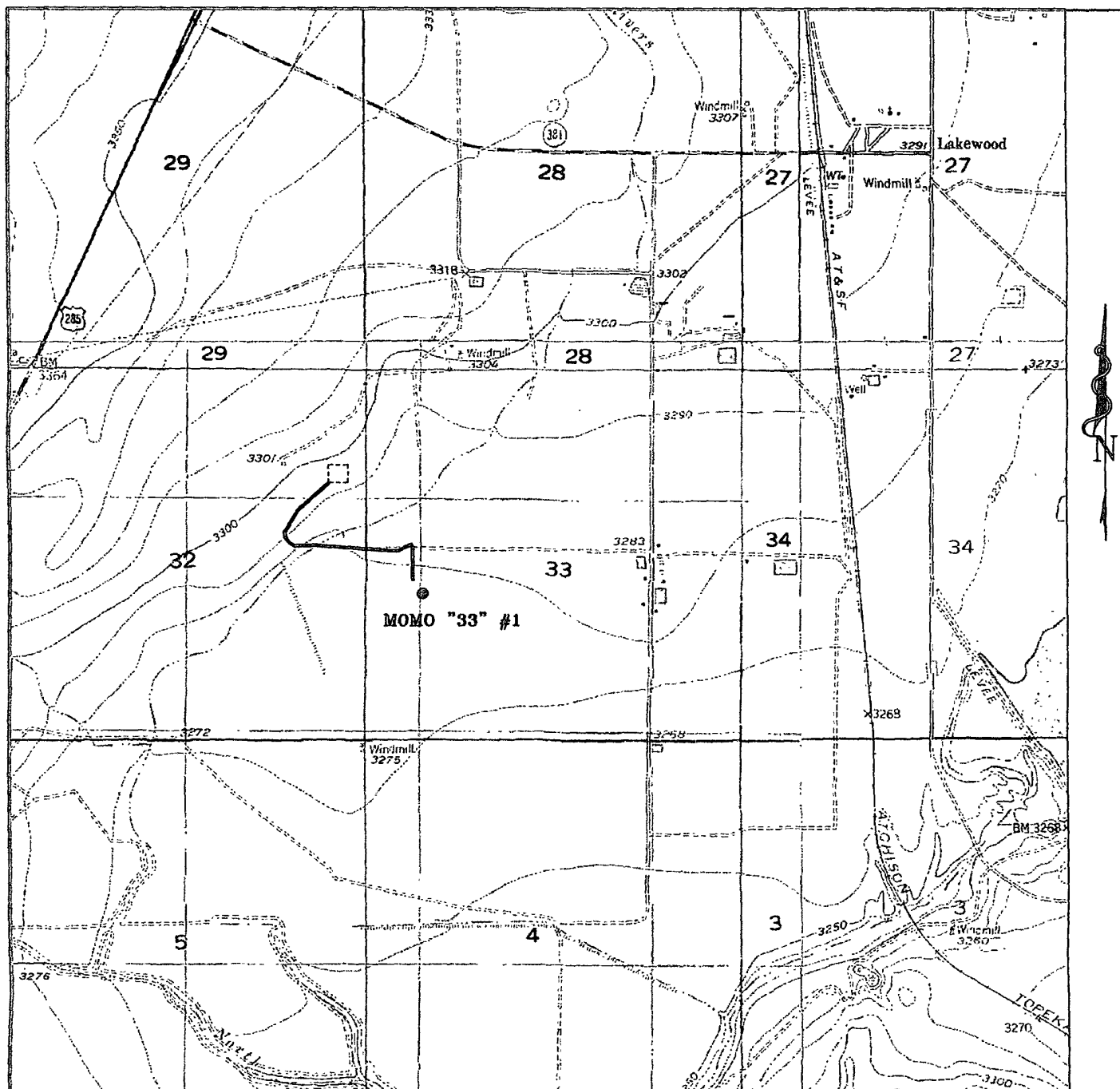
W.O. Number: KJG 19184TR.DWG

Survey Date: 02-14-2008

Scale: 1" = 2 MILES

Date: 02-15-2008

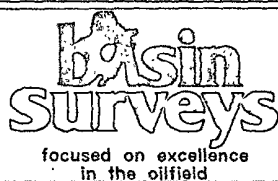
**RUBICON**  
**OIL & GAS,**  
**L.L.C.**



# **MOMO "33" #1**

Located 1980' FSL and 800' FWL

Section 33, Township 19 South, Range 26 East,  
N.M.P.M., Eddy County, New Mexico.



P.O. Box 1786  
1120 N. West County Rd.  
Hobbs, New Mexico 88241  
(505) 393-7316 - Office  
(505) 392-3074 - Fax  
basinsurveys.com

W.O. Number. KJG 19184T.DWG

Survey Date: 02-14-2008

Scale: 1" = 2000'

Date: 02-15-2008

**RUBICON  
OIL & GAS,  
L.L.C.**

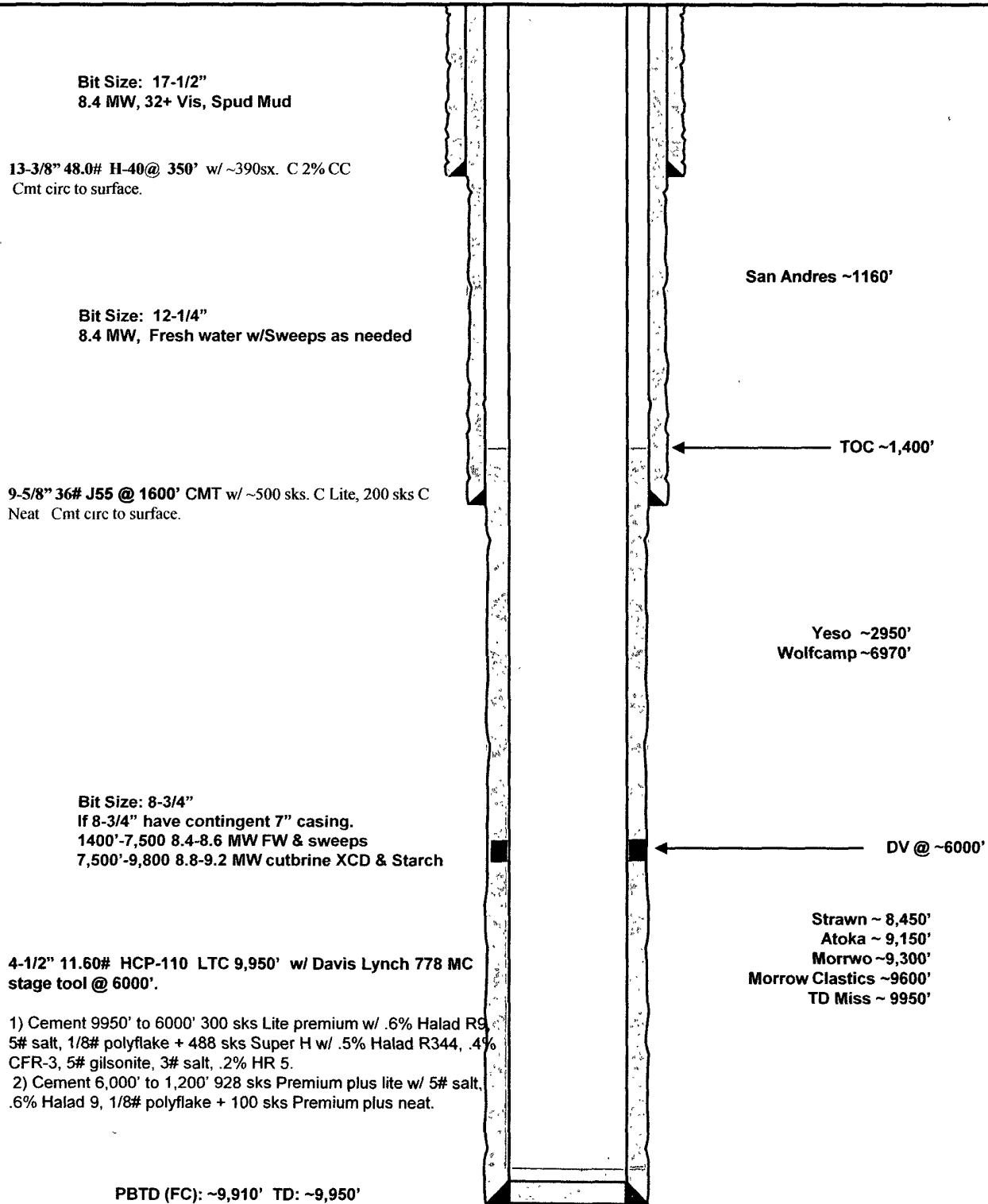
**Rubicon Oil & Gas, LLC  
Lakewood Prospect**

**KB: XXXX'  
GL: 3279'**

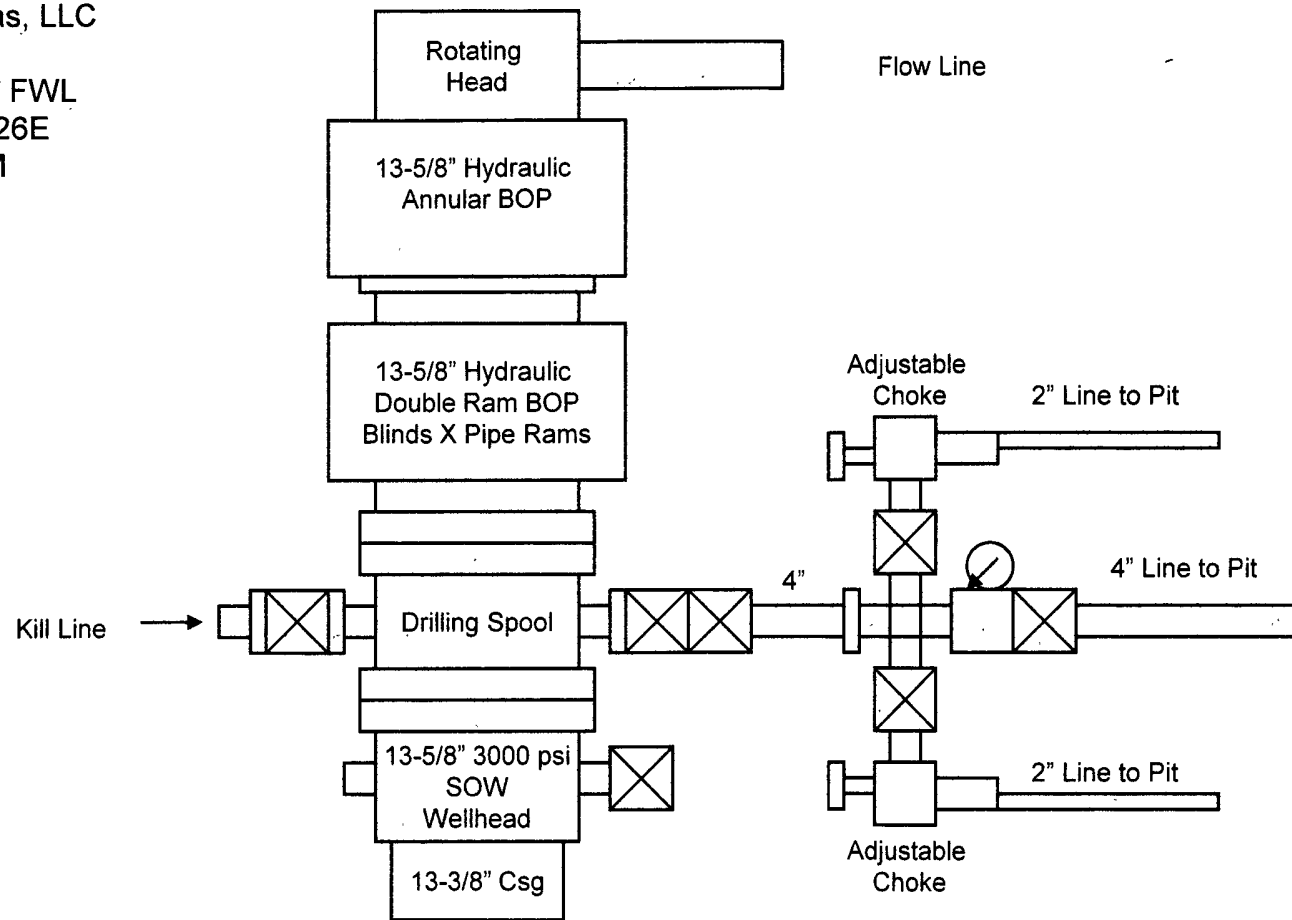
**MOMO 33-1  
Eddy County, New Mexico  
Proposed Wellbore  
30-015-XXXXX**

**1980' FSL & 800' FWL  
Sec. 33, T19S, R26E, UL L  
Eddy County, NM**

**TD'd: NA  
Spud: 6/2008**



Rubicon Oil & Gas, LLC  
MOMO33 No. 1  
1980' FSL & 800' FWL  
Sec 33, T19S, R26E  
Eddy County, NM



3000 psi Working Pressure  
BOPE Configuration  
And Choke Manifold

Exhibit "\_\_\_"

# Hydrogen Sulfide Drilling Operations Plan

Rubicon Oil & Gas, LLC  
H2S Plan to Meet NMOCD Rule 118

(Standards Where H2S is Anticipated)

## ONE - Hydrogen Sulfide Training:

All personnel, whether regularly assigned, contracted or employed on an unscheduled basis, will receive training from a qualified instructor in the following areas prior to commencing drilling operations on this well:

- The hazards and characteristics of hydrogen sulfide (H2S);
- The proper use and maintenance of personal protective equipment and life support systems;
- The proper use of H2S detectors, alarms, warning systems, briefing areas, evacuation procedures, and prevailing winds; and,
- The proper techniques of first aid and rescue procedures.

In addition, the supervisory personnel will be trained in the following areas;

- The effects of H2S on metal components. If high tensile tubulars are to be used, personnel will be trained in their special maintenance requirements;
- Corrective action and shut-in procedures when drilling or reworking a well and blowout prevention and well control procedures;
- The contents and requirements of the H2S Drilling Operations Plan.

There will be an initial training session just prior to encountering a known or probable H2S zone (within 3 days or 500') and weekly H2S and well control drills for all personnel in each crew. The initial training session shall include a review of the site specific H2S Drilling Operations Plan. This plan shall be available at the well site. All personnel will be required to carry documentation that they have received the proper training.

## TWO - H2S Safety Equipment and Systems:

**NOTE:** All H2S safety equipment and systems will be installed, tested, and operational when drilling reaches a depth of 500 feet above, or, three days prior to penetration of the first zone containing, or reasonably expected to contain, H2S.

### 1. Well Control Equipment:

- Flare line with flare igniter;
- Choke manifold with one remote hydraulic choke installed;
- Blind rams and pipe rams to accommodate all pipe sizes with properly sized closing unit;
- Auxiliary equipment to include an Annular Preventer.

Momo 33 #1  
Sec 33, T19S, R26E  
Eddy Vans 1



**2. Protective equipment for essential personnel:**

- The designated safety expert will provide 5-minute escape units located in the doghouse, and 30-minute air units at briefing areas.

**3. H2S detection and monitoring equipment:**

- Three portable H2S monitors will be positioned on location for the best coverage and response. These units have warning lights and audible sirens when triggered by H2S levels > 20 PPM.
- One portable SO2 monitor will be positioned near flare line during H2S flaring operations.

**4. Visual warning systems:**

- Wind direction indicators will be placed in accordance with the directives issued by the designated H2S expert.
- Caution/Danger signs shall be posted on roads providing direct access to the location. Signs will be painted a high visibility yellow with black lettering of sufficient size to be legible from the immediate location.

**5. Mud Program:**

- The mud program will minimize the volume of H2S circulated to the surface. Proper mud weight safe drilling practices, and, if necessary, the use of H2S scavengers will minimize hazards when penetrating H2S bearing zones.

**6. Metallurgy:**

- All drill strings, casing, tubing, wellhead, blowout preventers, drilling spools kill lines, choke manifold and line valves shall be suitable for H2S service.
- All elastomers used for packing and seals shall be H2S trimmed.

**7. Communications:**

- Radio and telephone communications will be available in company vehicles and rig doghouse.

**8. Well Testing:**

- Drill stem testing will be performed with a minimum number of personnel necessary to safely and adequately conduct the test. The drill stem testing of any known formation that contains H2S will be conducted during daylight hours.