

District I
1625 N. French Dr., Hobbs, NM 88240
District II
1301 W. Grand Avenue, Artesia, NM 88210
District III
1000 Rio Brazos Road, Aztec, NM 87410
District IV
1220 S. St. Francis Dr., Santa Fe, NM 87505

State of New Mexico
Energy Minerals and Natural Resources



Form C-101
June 16, 2008

Oil Conservation Division
1220 South St. Francis Dr.
Santa Fe, NM 87505

Submit to appropriate District Office

AMENDED REPORT

APPLICATION FOR PERMIT TO DRILL, RE-ENTER, DEEPEN, PLUGBACK, OR ADD A ZONE

Operator Name and Address UNIT PETROLEUM COMPANY 407 NORTH BIG SPRING SUITE 101 MIDLAND, TEXAS 79701		OGRID Number 115970
Property Code 37305		Property Name C. R. LOPEZ
Proposed Pool 1 DUBLIN RANCH-MORROW (76140)		Proposed Pool 2
API Number 30-015-3650		Well No. 2

AUG - 6 2008
OCD ARTESIA

Surface Location

UL or lot no.	Section	Township	Range	Lot Idn	Feet from the	North/South line	Feet from the	East/West line	County
M	29	22S	28E		660'	SOUTH	1296'	WEST	EDDY

Proposed Bottom Hole Location If Different From Surface

UL or lot no.	Section	Township	Range	Lot Idn	Feet from the	North/South line	Feet from the	East/West line	County

Additional Well Information

Work Type Code N	Well Type Code G	Cable/Rotary ROTARY	Lease Type Code P	Ground Level Elevation 3029'
Multiple NO	Proposed Depth 12,550'	Formation MORROW	Contractor UNKNOWN	Spud Date WHEN APPROVED

Proposed Casing and Cement Program

Hoie Size	Casing Size	Casing weight/foot	Setting Depth	Sacks of Cement	Estimated TOC
26"	20"	Conductor	80"	Redi-mix	Surface
17 1/2"	13 3/8"	48#	400'	440 Sx.	Surface
12 1/4"	9 5/8"	40#	6400'	1495 Sx	Surface
8 3/4"	5 1/2"	17 & 20#	12,550'	1055 Sx.	Est. TOC 6000'

Describe the proposed program. If this application is to DEEPEN or PLUG BACK, give the data on the present productive zone and proposed new productive zone. Describe the blowout prevention program, if any. Use additional sheets if necessary.

NOTE: NEW PIT RULE
19-15-17 NMAC PART 17
A form C-144 must be approved
before starting drilling operations.

SEE ATTACHED SHEET

I hereby certify that the information given above is true and complete to the best of my knowledge and belief.		OIL CONSERVATION DIVISION	
Signature: <i>Joe T. Janica</i>	Approved by: <i>Jim W. Green</i>	Title: <i>District II Supervisor</i>	
Printed name: Joe T. Janica	Approval Date: <i>8/13/08</i>	Expiration Date: <i>8/13/10</i>	
Title: Permit Eng.	E-mail Address: joejanica@valornet.com		
Date: 08/05/08	Phone: 575-391-8503	Conditions of Approval Attached <input type="checkbox"/>	

1. Drill 26" hole to 80'. Set 80' of 20" conductor pipe and cement to surface with Redi-mix.
 2. Drill 17½" hole to 400'. Run and set 400' of 13 3/8" 48# H-40 ST&C casing. Cement with 440 Sx. of Class "C" cement + 2% CaCl₂ + ½# Flocele/Sx. circulate cement.
 3. Drill 12½" hole to 6400'. Run and set 6400' of 9 5/8" casing as follows: 2400' of 9 5/8" 40# HCK-55 LT&C, 4000' of 9 5/8" 40# J-55 ST&C casing. Cement with 1295 Sx. of Class "C" POZ + additives, tail in with 200 Sx. of Class "C" neat, circulate cement to surface.
 4. Drill 8 3/4" hole to 12,550'. Run and set 12,550' of 5½" casing as follows: 1550' of 5½" 20# P-110 LT&C, 11,000' of 5½" 17# HCK-110 LT&C casing. Cement with 615 Sx. of ComCRETE Blend and tail in with 440 Sx. of TXI Lightweight cement + additives. Cement top must be at least 500' of the upper most hydrocarbon producing zone.
-

State of New Mexico

DISTRICT I
1625 N FRENCH DR., HOBBS, NM 88240

Energy, Minerals and Natural Resources Department

Form C-102

DISTRICT II
1301 W. GRAND AVENUE, ARTESIA, NM 88210

OIL CONSERVATION DIVISION
1220 SOUTH ST. FRANCIS DR.
Santa Fe, New Mexico 87505

Revised October 12, 2005
Submit to Appropriate District Office
State Lease - 4 Copies
Fee Lease - 3 Copies

DISTRICT III
1000 Rio Brazos Rd., Aztec, NM 87410

DISTRICT IV
1220 S. ST. FRANCIS DR., SANTA FE, NM 87505

WELL LOCATION AND ACREAGE DEDICATION PLAT

AMENDED REPORT

API Number	Pool Code 76140	Pool Name DUBLIN RANCH-MORROW
Property Code	Property Name C.R. LOPEZ	Well Number 2
OGRID No. 115970	Operator Name UNIT PETROLEUM COMPANY	Elevation 3029'

Surface Location

UL or lot No.	Section	Township	Range	Lot Idn	Feet from the	North/South line	Feet from the	East/West line	County
M	29	22-S	28-E		660	SOUTH	1296	WEST	EDDY

Bottom Hole Location If Different From Surface

UL or lot No.	Section	Township	Range	Lot Idn	Feet from the	North/South line	Feet from the	East/West line	County
Dedicated Acres	Joint or Infill	Consolidation Code	Order No.						
320									

NO ALLOWABLE WILL BE ASSIGNED TO THIS COMPLETION UNTIL ALL INTERESTS HAVE BEEN CONSOLIDATED OR A NON-STANDARD UNIT HAS BEEN APPROVED BY THE DIVISION

GEODETTIC COORDINATES
NAD 27 NME

Y=494039.1 N
X=567992.2 E

LAT.=32.358037° N
LONG.=104.113140° W

1296'

660'

Existing Gas Well

OPERATOR CERTIFICATION

I hereby certify that the information herein is true and complete to the best of my knowledge and belief, and that this organization either owns a working interest or unleased mineral interest in the land including the proposed bottom hole location or has a right to drill this well at this location pursuant to a contract with an owner of such mineral or working interest, or to a voluntary pooling agreement or a compulsory pooling order heretofore entered by the division.

Joe T. Janica
Signature

Date
08/05/08

Joe T. Janica
Printed Name

SURVEYOR CERTIFICATION

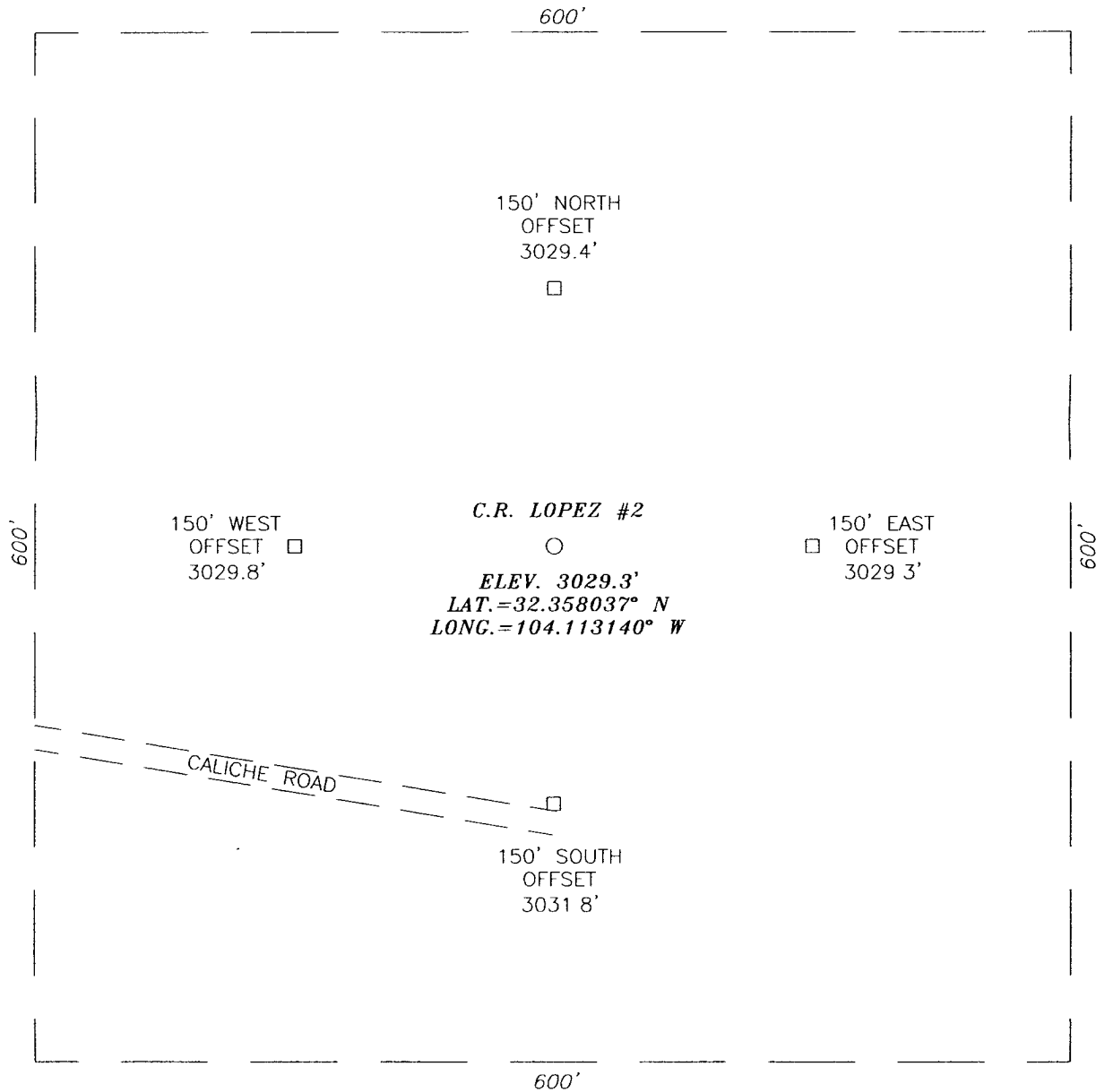
I hereby certify that the well location shown on this plat was plotted from field notes of actual surveys made by me or under my supervision, and that the same is true and correct to the best of my belief.

Date Surveyed: 8/14/08 LA

Signature & Seal of Professional Surveyor: *Ronald J. Eidson*
3239

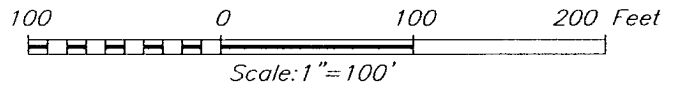
Certificate No. GARY EIDSON 12641
RONALD EIDSON 3239

SECTION 29, TOWNSHIP 22 SOUTH, RANGE 28 EAST, N.M.P.M.,
 EDDY COUNTY, NEW MEXICO



DIRECTIONS TO LOCATION

FROM THE INTERSECTION OF US. HWY. #285 AND CO. RD. #704, GO EAST ON CO. RD. #704 APPROX. 3.5 MILES. TURN LEFT AND GO NORTH APPROX. 0.1 MILES. TURN RIGHT AND GO EAST APPROX. 0.5 MILES THIS LOCATION IS APPROX. 150 FEET NORTH.



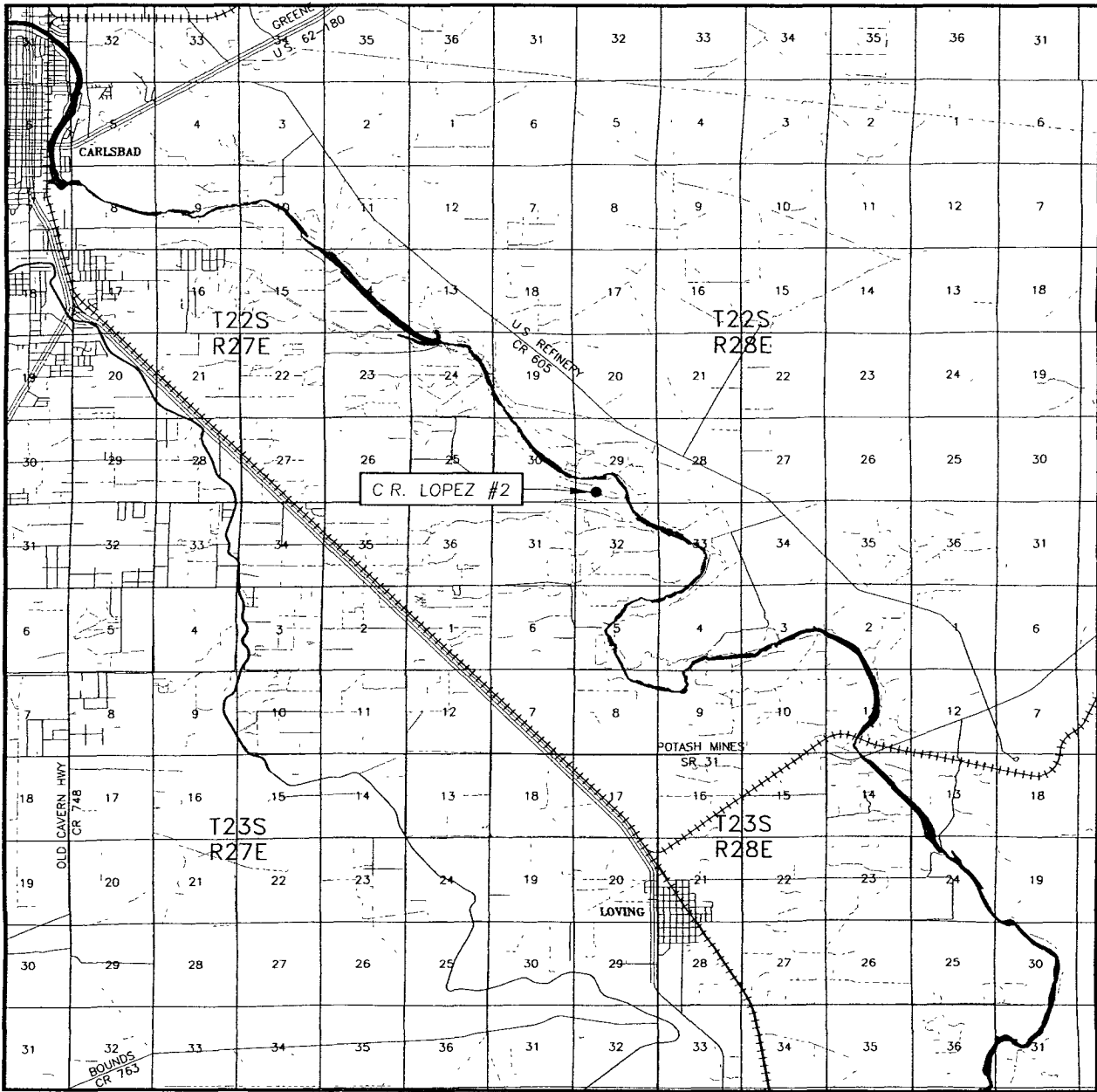
PROVIDING SURVEYING SERVICES
 SINCE 1946
JOHN WEST SURVEYING COMPANY
 412 N. DAL PASO
 HOBBS, N.M. 88240
 (505) 393-3117

UNIT PETROLEUM COMPANY

C.R. LOPEZ #2 WELL
 LOCATED 660 FEET FROM THE SOUTH LINE
 AND 1296 FEET FROM THE WEST LINE OF SECTION 29,
 TOWNSHIP 22 SOUTH, RANGE 28 EAST, N.M.P.M.,
 EDDY COUNTY, NEW MEXICO.

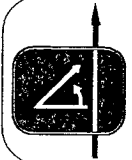
Survey Date: 7/10/08	Sheet 1 of 1 Sheets		
W.O. Number: 08.11.1119	Dr By: LA	Rev 1:N/A	
Date: 7/10/08		08111119	Scale: 1"=100'

VICINITY MAP



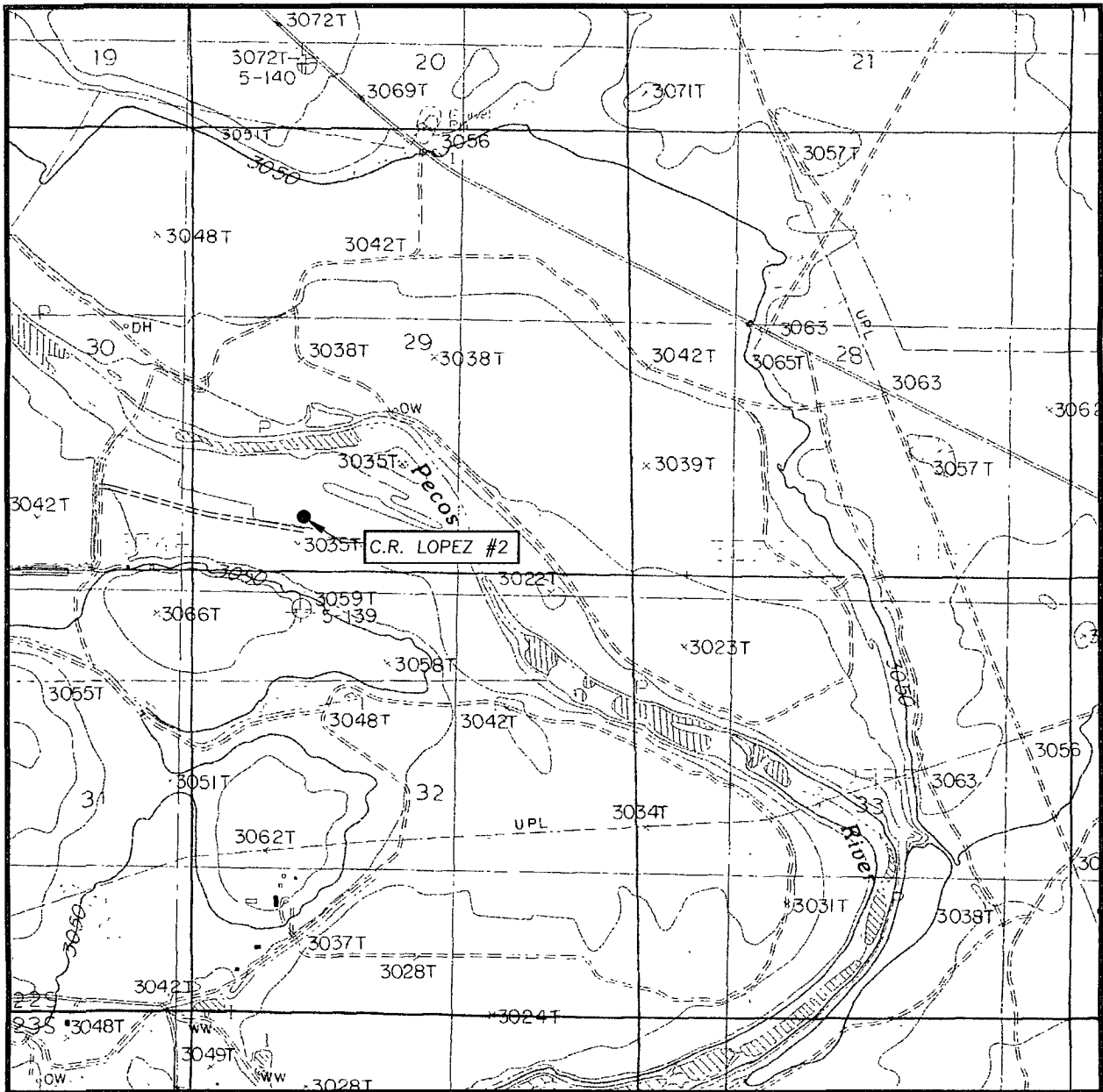
SCALE: 1" = 2 MILES

SEC. 29 TWP. 22-S RGE. 28-E
 SURVEY _____ N.M.P.M. _____
 COUNTY EDDY STATE NEW MEXICO
 DESCRIPTION 660' FSL & 1296' FWL
 ELEVATION 3029'
 UNIT _____
 OPERATOR PETROLEUM COMPANY
 LEASE C.R. LOPEZ



PROVIDING SURVEYING SERVICES
 SINCE 1946
JOHN WEST SURVEYING COMPANY
 412 N. DAL PASO
 HOBBS, N.M. 88240
 (505) 393-3117

LOCATION VERIFICATION MAP



SCALE: 1" = 2000'

CONTOUR INTERVAL:
LOVING, N.M. - 10'

SEC. 29 TWP. 22-S RGE. 28-E

SURVEY _____ N.M.P.M.

COUNTY EDDY STATE NEW MEXICO


DESCRIPTION 660' FSL & 1296' FWL

ELEVATION 3029'

UNIT
OPERATOR PETROLEUM COMPANY

LEASE C.R. LOPEZ

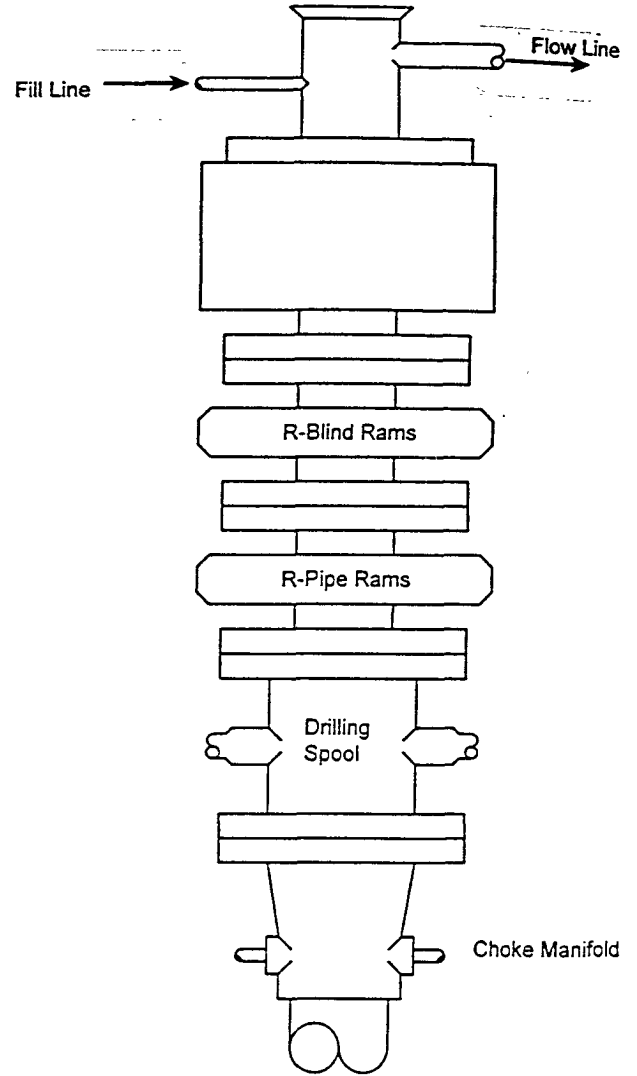
U.S.G.S. TOPOGRAPHIC MAP
LOVING, N.M.



PROVIDING SURVEYING SERVICES
SINCE 1946
JOHN WEST SURVEYING COMPANY
412 N. DAL PASO
HOBBS, N.M. 88240
(505) 393-3117

BLOWOUT PREVENTER SYSTEM

5000 PSI



Type 1500 SERIES
5000 psi WP

Choke Manifold Assembly for 5M WP System

