

RECEIVED

OCT 28 2003

District I  
1625 N. French Dr., Hobbs, NM 88240  
District II  
811 South First, Artesia, NM 88210  
District III  
1000 Rio Brazos Road, Aztec, NM 87410  
District IV  
2040 South Pacheco, Santa Fe, NM 87505

State of New Mexico  
Energy Minerals and Natural Resources

Oil Conservation Division  
2040 South Pacheco  
Santa Fe, NM 87505

OCD-ARTESIA Form C-101  
Revised March 17, 1999

Submit to appropriate District Office  
State Lease - 6 Copies  
Fee Lease - 5 Copies

☐ AMENDED REPORT

**APPLICATION FOR PERMIT TO DRILL, RE-ENTER, DEEPEN, PLUGBACK, OR ADD A ZONE**

|  |                                     |  |
|--|-------------------------------------|--|
| <sup>1</sup> Operator Name and Address<br><b>Clayton Williams Energy, Inc.<br/>Six Desta Drive, Suite 3000<br/>Midland, TX 79705</b> |                                     | <sup>2</sup> OGRID Number<br><b>25706</b>          |
|  |                                     | <sup>3</sup> API Number<br><b>30 - 015 - 33070</b> |
| <sup>3</sup> Property Code<br><b>25235</b>   | Property Name<br><b>STATE "20B"</b> | <sup>6</sup> Well No.<br><b>17</b>                 |

<sup>7</sup> Surface Location

| UL or lot no. | Section   | Township    | Range       | Lot Idn | Feet from the | North/South line | Feet from the | East/West line | County      |
|---------------|-----------|-------------|-------------|---------|---------------|------------------|---------------|----------------|-------------|
| <b>G</b>      | <b>20</b> | <b>17 S</b> | <b>29 E</b> |         | <b>2310</b>   | <b>NORTH</b>     | <b>2310</b>   | <b>EAST</b>    | <b>EDDY</b> |

<sup>8</sup> Proposed Bottom Hole Location If Different From Surface

| UL or lot no. | Section | Township | Range | Lot Idn | Feet from the | North/South line | Feet from the | East/West line | County |
|---------------|---------|----------|-------|---------|---------------|------------------|---------------|----------------|--------|
|               |         |          |       |         |               |                  |               |                |        |

|  |   |
|--|---|
| <sup>9</sup> Proposed Pool 1<br><b>Empire, East (Yeso) 96610</b> | <sup>10</sup> Proposed Pool 2<br><b>Grayburg Jackson -7R's,QN,GB,SA (28509)</b> |
|--|---|

|  |  |  |  |  |
|--|--|--|--|--|
| <sup>11</sup> Work Type Code<br><b>N</b> | <sup>12</sup> Well Type Code<br><b>O</b>     | <sup>13</sup> Cable/Rotary<br><b>R</b>       | <sup>14</sup> Lease Type Code<br><b>S</b>          | <sup>15</sup> Ground Level Elevation<br><b>3614'</b> |
| <sup>16</sup> Multiple<br><b>N</b>       | <sup>17</sup> Proposed Depth<br><b>5000'</b> | <sup>18</sup> Formation<br><b>Yeso Sands</b> | <sup>19</sup> Contractor<br><b>Key Energy Svcs</b> | <sup>20</sup> Spud Date<br><b>Upon approval</b>      |

<sup>21</sup> Proposed Casing and Cement Program

| Hole Size      | Casing Size   | Casing weight/foot | Setting Depth | Sacks of Cement | Estimated TOC  |
|----------------|---------------|--------------------|---------------|-----------------|----------------|
| <b>12-1/4"</b> | <b>8-5/8"</b> | <b>24# @ 30.0'</b> | <b>400'</b>   | <b>300</b>      | <b>Surface</b> |
| <b>7-7/8"</b>  | <b>5-1/2"</b> | <b>17#</b>         | <b>5000'</b>  | <b>935</b>      | <b>Surface</b> |

<sup>22</sup> Describe the proposed program. If this application is to DEEPEN or PLUG BACK, give the data on the present productive zone and proposed new productive zone. Describe the blowout prevention program, if any. Use additional sheets if necessary.

- @ 300' Oper. To set surface casing above Salado.*
1. Drill a 12-1/4" hole to 400'. Run and set 400' of 8-5/8" 24# J-55 ST&C casing. Cement with 300 sx. of Cl. C cement. Circulate cement to surface.
  2. Drill a 7-7/8" hole to 5000'. Run and set 5000' of 5-1/2" 17# ST&C casing with DV tool @ ±2500'. Cement 1<sup>st</sup> stage with 365 sx. Cl. C 50/50 Poz and cement 2<sup>nd</sup> stage with 570 sx. 35/65 Poz C and tail with 150 sx. Cl. C neat. Circulate cement to surface.

|  |                              |  |                                     |
|--|------------------------------|--|-------------------------------------|
| <sup>23</sup> I hereby certify that the information given above is true and complete to the best of my knowledge and belief. |                              | <b>B6V</b> OIL CONSERVATION DIVISION                         |                                     |
| Signature: <i>Betsy Luna</i>   |                              | Approved by: <i>Jim W. Green</i>                             |                                     |
| Printed name: <b>Betsy Luna</b>  |                              | Title: <i>District Supervisor</i>                            |                                     |
| Title: <b>Engineering Technician</b>   |                              | Approval Date: <b>OCT 28 2003</b>                            | Expiration Date: <b>OCT 28 2004</b> |
| Date: <b>10/27/2003</b>  | Phone: <b>(432) 682-6324</b> | Conditions of Approval:<br>Attached <input type="checkbox"/> |                                     |

DISTRICT I  
P.O. Box 1980, Hobbs, NM 88241-1980

State of New Mexico

Energy, Minerals and Natural Resources Department

Form C-102  
Revised February 10, 1994  
Submit to Appropriate District Office  
State Lease - 4 Copies  
Fee Lease - 3 Copies

DISTRICT II  
P.O. Drawer DD, Artesia, NM 88211-0719

OIL CONSERVATION DIVISION

P.O. Box 2088

Santa Fe, New Mexico 87504-2088

DISTRICT III  
1000 Rio Brazos Rd., Aztec, NM 87410

DISTRICT IV  
P.O. BOX 2088, SANTA FE, N.M. 87504-2088

WELL LOCATION AND ACREAGE DEDICATION PLAT

☐ AMENDED REPORT

|                        |  |                                  |
|------------------------|--|----------------------------------|
| API Number             | Pool Code<br>96610                             | Pool Name<br>Empire, East (Yeso) |
| Property Code<br>25235 | Property Name<br>STATE 20 B                    | Well Number<br>17                |
| OGRID No.<br>25706     | Operator Name<br>CLAYTON WILLIAMS ENERGY, INC. | Elevation<br>3614'               |

Surface Location

|                    |               |                  |               |         |                        |                           |                        |                        |                |
|--------------------|---------------|------------------|---------------|---------|------------------------|---------------------------|------------------------|------------------------|----------------|
| UL or lot No.<br>G | Section<br>20 | Township<br>17-S | Range<br>29-E | Lot Idn | Feet from the<br>2310' | North/South line<br>NORTH | Feet from the<br>2310' | East/West line<br>EAST | County<br>EDDY |
|--------------------|---------------|------------------|---------------|---------|------------------------|---------------------------|------------------------|------------------------|----------------|

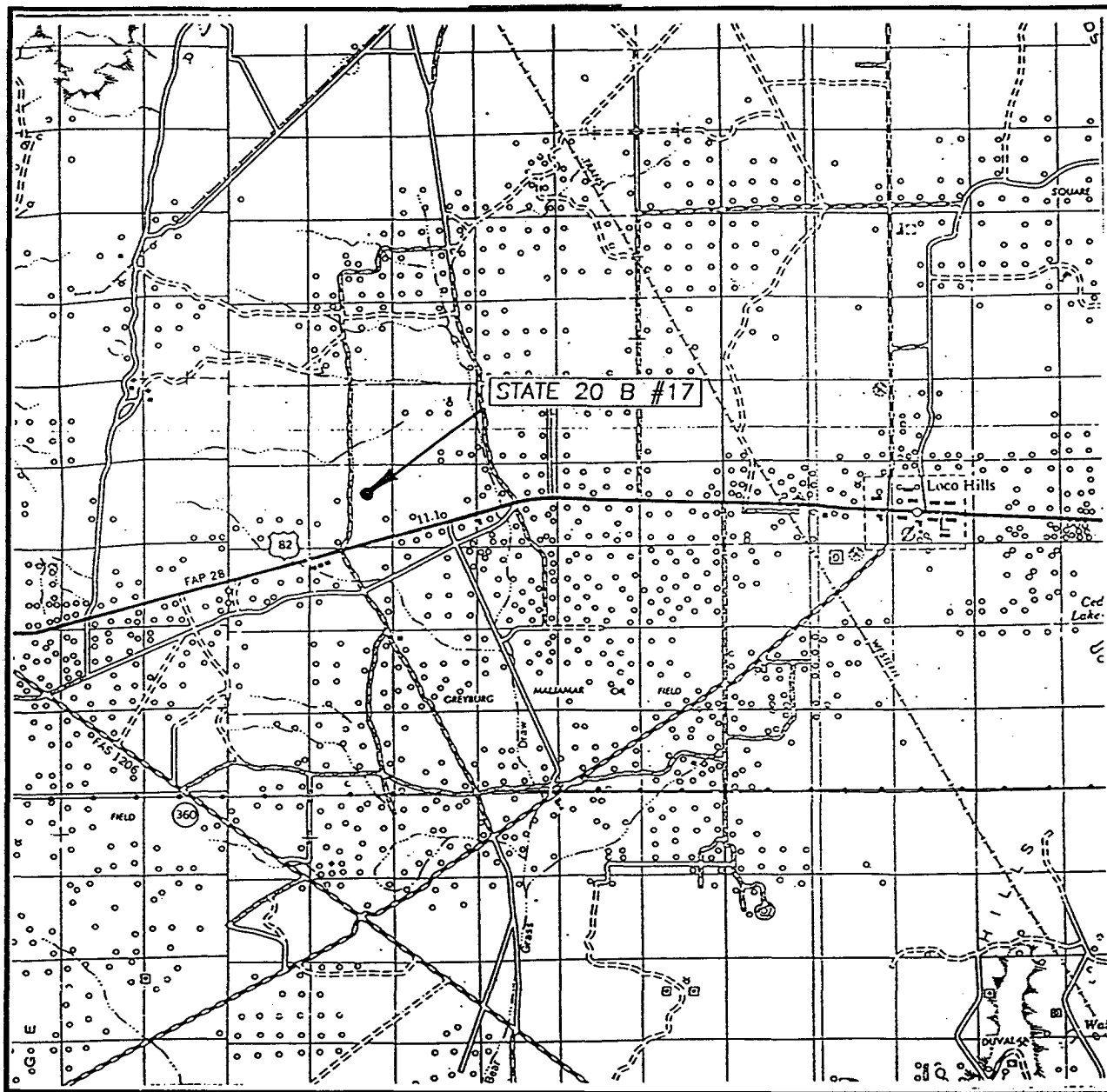
Bottom Hole Location If Different From Surface

|               |         |          |       |         |                 |                  |               |                |        |                 |                    |           |
|---------------|---------|----------|-------|---------|-----------------|------------------|---------------|----------------|--------|-----------------|--------------------|-----------|
| UL or lot No. | Section | Township | Range | Lot Idn | Feet from the   | North/South line | Feet from the | East/West line | County |                 |                    |           |
|               |         |          |       |         | Dedicated Acres |                  |               |                |        | Joint or Infill | Consolidation Code | Order No. |

NO ALLOWABLE WILL BE ASSIGNED TO THIS COMPLETION UNTIL ALL INTERESTS HAVE BEEN CONSOLIDATED  
OR A NON-STANDARD UNIT HAS BEEN APPROVED BY THE DIVISION

|  |  |  |  |  |  |
|--|--|--|--|--|--|
|  |  |  |  | <p><b>OPERATOR CERTIFICATION</b></p> <p>I hereby certify the the information contained herein is true and complete to the best of my knowledge and belief.</p> <p><i>Betsy Luna</i><br/>Signature</p> <p><b>Betsy Luna</b><br/>Printed Name</p> <p><b>Engineering Technician</b><br/>Title</p> <p><b>Oct. 27, 2003</b><br/>Date</p>  |  |
| <p><b>GEODETIC COORDINATES</b><br/>NAD 27 NME</p> <p>Y = 662406.5 N<br/>X = 573095.3 E<br/>LAT. = 32°49'14.94"N<br/>LONG. = 104°05'43.42"W</p> |  |  |  | <p><b>SURVEYOR CERTIFICATION</b></p> <p>I hereby certify that the well location shown on this plat was plotted from field notes of actual surveys made by me or under my supervision and that the same is true and correct to the best of my belief.</p> <p>October 21, 2003</p> <p>Date Surveyed</p> <p>Signature &amp; Seal of Professional Surveyor</p> <p><i>GARY EDSON</i><br/>GARY EDSON<br/>03.11.1144<br/>10/22/03</p> <p>Certificate No. GARY EDSON 12641</p> |  |

# VICINITY MAP



SCALE: 1" = 2 MILES

SEC. 20 TWP. 17-S RGE. 29-E

SURVEY N.M.P.M.

COUNTY EDDY

DESCRIPTION 2310' FNL & 2310' FEL

ELEVATION 3614'

OPERATOR CLAYTON WILLIAMS ENERGY, INC.

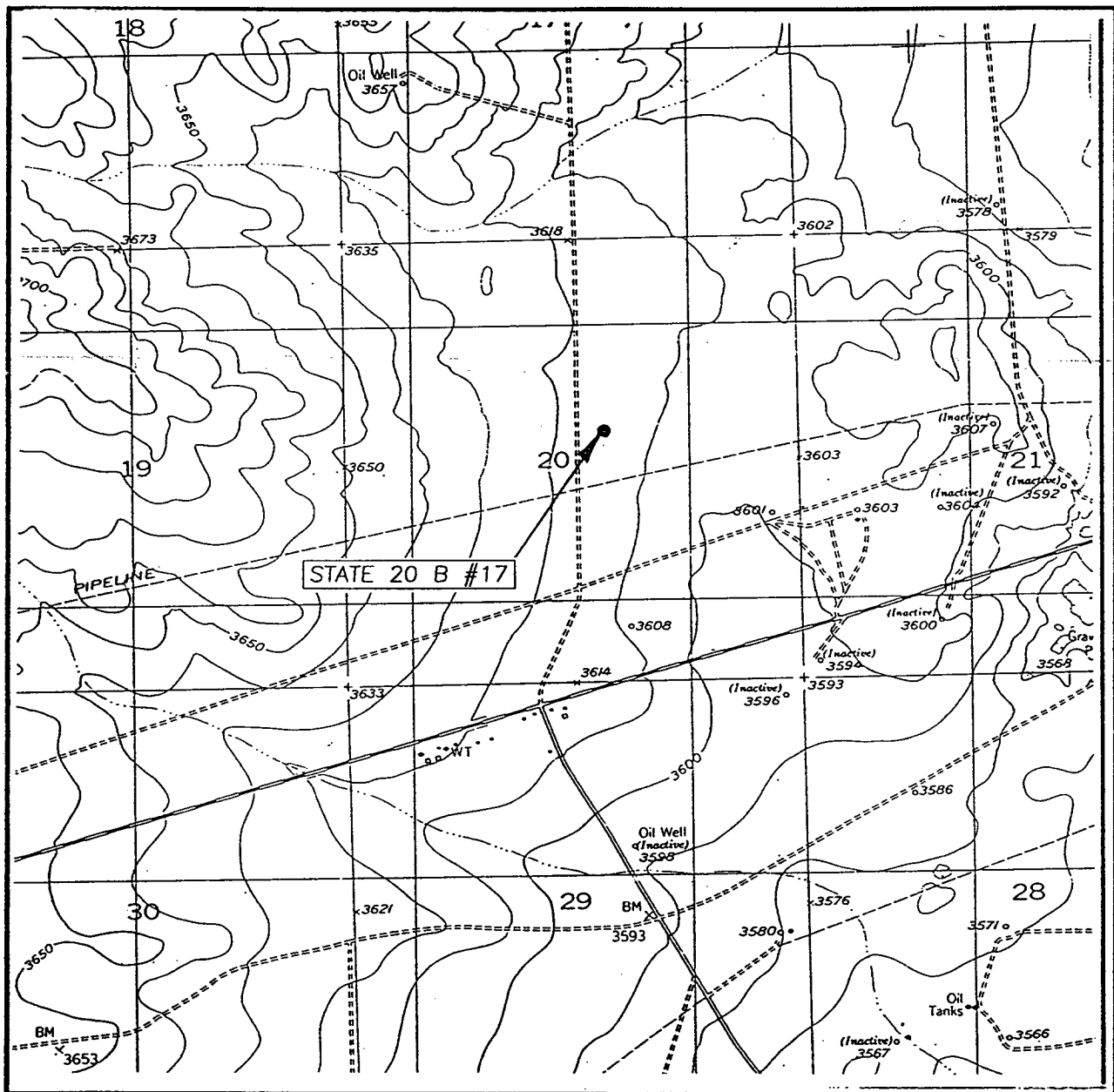
LEASE STATE 20 B

JOHN WEST SURVEYING  
HOBBS, NEW MEXICO  
(505) 393-3117

## DRIVING DIRECTIONS

TURN NORTH OFF STATE HIGHWAY #83 0.6 MILES WEST OF MILE MARKER #126. GO NORTH ON CALICHE RD. 0.6 MILES, TURN RIGHT ON CALICHE RD AND GO EAST APPROXIMATELY 300'. THIS PROPOSED LOCATION IS 180' TO THE SOUTH.

# LOCATION VERIFICATION MAP



SCALE: 1" = 2000'

CONTOUR INTERVAL: 10'  
RED LAKE SE, N.M.

SEC. 20 TWP. 17-S RGE. 29-E

SURVEY N.M.P.M.

COUNTY EDDY

DESCRIPTION 2310' FNL & 2310' FEL

ELEVATION 3614'

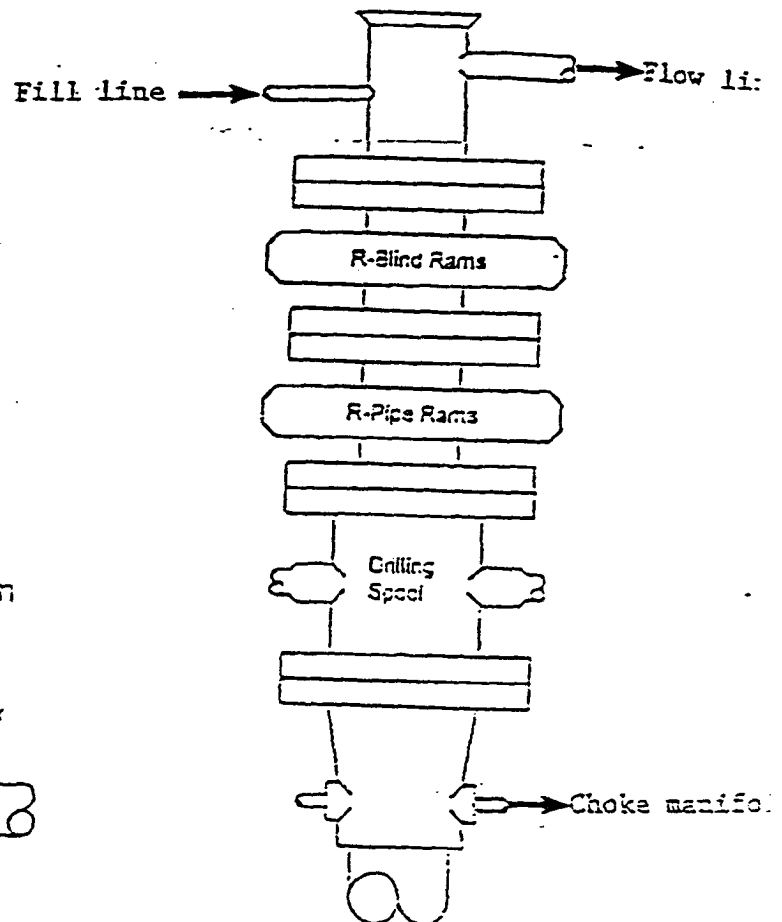
OPERATOR CLAYTON WILLIAMS ENERGY, INC.

LEASE STATE 20 B

U.S.G.S. TOPOGRAPHIC MAP  
RED LAKE SE, N.M.

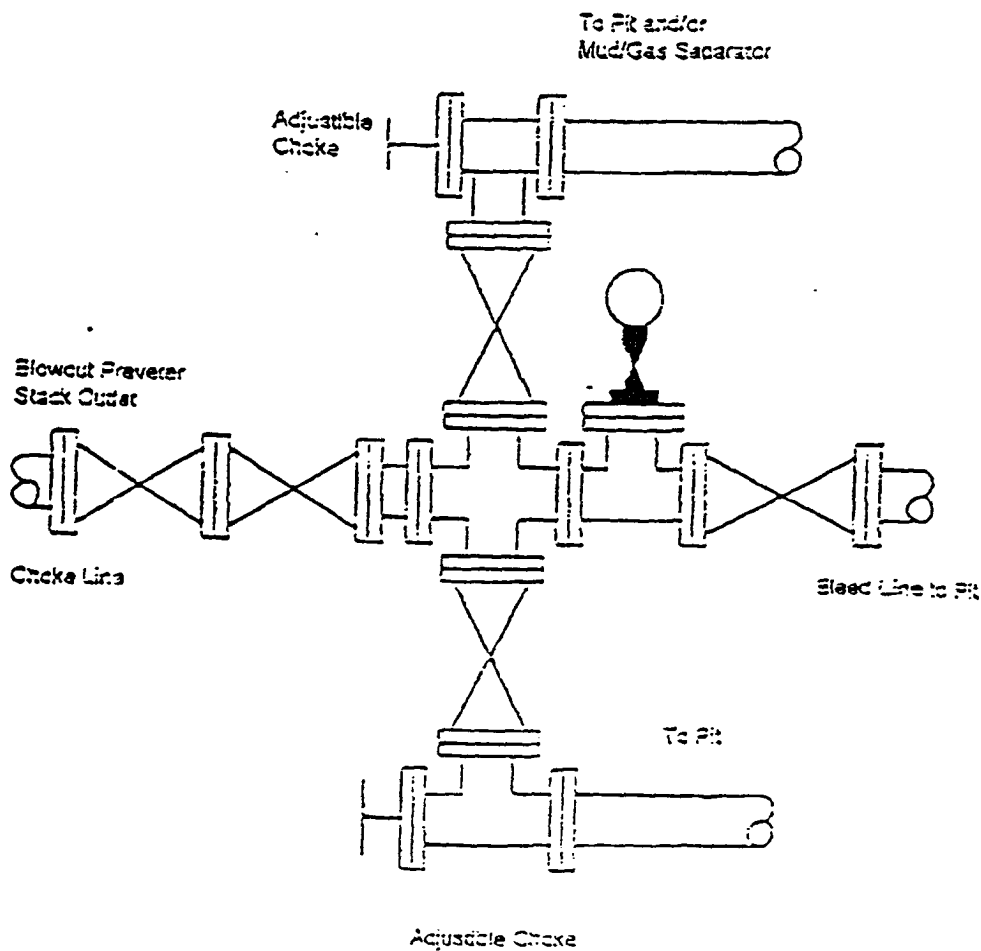
JOHN WEST SURVEYING  
HOBBS, NEW MEXICO  
(505) 393-3117

# BLOWOUT PREVENTER SYSTEM



Type 900 Series  
3000 psi WP

Choke Manifold Assembly for 3M WP System





CLAYTON WILLIAMS ENERGY, INC.

October 27, 2003

State of New Mexico  
New Mexico Energy, Minerals and Natural Resources Department  
Oil Conservation Division  
DISTRICT II  
1301 W. Grand Avenue  
Artesia, New Mexico 88210

RECEIVED  
OCT 28 2003  
OCD-ARTESIA

Attention: Mr. Bryan Arrant

Re: **Form C-101 Application for Permit to Drill**

Clayton Williams Energy, Inc.  
State '20B' Lease, Well No. 17  
Property Code No. 25235  
Eddy County, New Mexico

Dear Bryan:

Please find enclosed the following forms required for approval of a permit to drill:

1. Form C-101 – 6 copies
2. Form C-102 – 4 copies
3. BOP Schematic – 6 copies

Please note the H2S Contingency Plan as per Rule 118, will be filed separately in your office by Indian Fire & Safety prior to well commencement. We anticipate spudding this well as soon as we can get your approval, so anything you can do to expedite this would be greatly appreciated. Should you have any questions or require further, please call.

Sincerely yours,

A handwritten signature in cursive script that reads "Betsy Luna".

Betsy Luna  
Engineering Technician

Attachments