

APPLICATION FOR PERMIT TO DRILL OR REENTER

1a. Type of Work ☒ DRILL ☐ REENTER  
1b. Type of Well ☐ Oil Well ☒ Gas Well ☐ Other ☒ Single Zone ☐ Multiple Zone

2. Name of Operator  
Bass Enterprises Production Co.

3a. Address  
P.O. Box 2760 Midland, TX 79702-2760

3b. Phone No. (include area code)  
(432) 683-2277

4. Location of Well (Report location clearly and in accordance with any State requirements)\*

At surface SWSE 1310 FSL & 1330 FEL

At proposed prod. zone SWSE 1310 FSL & 1330 FEL

14. Distance in miles and direction from nearest town or post office\*

16 miles East of Malaga NM OCD-ARTESIA

15. Distance from proposed\*  
location to nearest  
property or lease line, ft.  
(Also to nearest drg. unit line, if any) 660'

16. No. of Acres in lease  
1843.32

17. Spacing Unit dedicated to this well  
320

18. Distance from proposed location\*  
to nearest well, drilling, completed,  
applied for, on this lease, ft. 835'

19. Proposed Depth  
14,500 MD

20. BLM/BIA Bond No. on file  
NM2204

21. Elevations (Show whether DF, KDB, RT, GL, etc.)  
3219' GL

22. Approximate date work will start\*  
November 1, 2003

23. Estimated duration  
90 Days

24. Attachments

CARLSBAD CONTROLLED WATER BASIN

The following, completed in accordance with the requirements of Onshore Oil and Gas Order No. 1, shall be attached to this form:

- Well plat certified by a registered surveyor.
- A Drilling Plan
- A Surface Use Plan (if the location is on National Forest System Lands, the SUPO shall be filed with the appropriate Forest Service Office).
- Bond to cover the operations unless covered by an existing bond on file (see Item 20 above).
- Operator certification.
- Such other site specific information and/or plans as may be required by the authorized officer.

25. Signature

Jami Wilber

Name (Printed/Typed)

Tami Wilber

Date

8/15/03

Title

Production Clerk

Approved by (Signature)

/s/ Jesse J. Juen

Name (Printed/Typed)

/s/ Jesse J. Juen

Date

30 OCT 2003

Title

ACTING STATE DIRECTOR

Office

NM STATE OFFICE

Application approval does not warrant or certify that the applicant holds legal or equitable title to those rights in the subject lease which would entitle the applicant to conduct operations thereon.

Conditions of approval, if any, are attached.

APPROVAL FOR 1 YEAR

Title 18 U.S.C. Section 1001 and Title 43 U.S.C. Section 1212, make it a crime for any person knowingly and willfully to make to any department or agency of the United States any false, fictitious or fraudulent statements or representations as to any matter within its jurisdiction.

\*(Instructions on Reverse)

APPROVAL SUBJECT TO  
GENERAL REQUIREMENTS  
AND SPECIAL STIPULATIONS  
ATTACHED

**Additional Operator Remarks:**

This well is located inside the Secretary's Potash Area and outside the R-111 Potash Area. No potash leases within 1 mile of location.

Surface casing to be set into the Rustler below all fresh water sands.

The intermediate casing will be set through the salt.

Production cement will tie 450' into the intermediate casing.

Will re-Arch location to 650' x 650'.

**DISTRICT II**  
811 South First, Artesia, NM 88210

**Energy, Minerals and Natural Resources Department**

**Submit to Appropriate District Office**  
**State Lease - 4 Copies**  
**Fee Lease - 3 Copies**

**DISTRICT III**  
**1000 Rio Bravos Rd., Artec, NM 87410**

## OIL CONSERVATION DIVISION

**DISTRICT IV**  
**ED40 South Pacheco, Santa Fe, NM 87506**

2040 South Pacheco  
Santa Fe, New Mexico 87504-2088

**□ AMENDED REPORT**

## WELL LOCATION AND ACREAGE DEDICATION PLAT

API Number 30-015-31919	Pool Code	Pool Name Dog Town Draw (Morrow)
Property Code 001796	Property Name POKER LAKE UNIT	Well Number 185
OGRIID No. 001801	Operator Name BASS ENTERPRISES PRODUCTION COMPANY	Elevation 3219'

### Surface Location

UL or lot No.	Section	Township	Range	Lot Idn	Feet from the	North/South line	Feet from the	East/West line	County
0	6	24 S	30 E		1310	SOUTH	1330	EAST	EDDY

### Bottom Hole Location If Different From Surface

UL or lot No.	Section	Township	Range	Lot Idn	Feet from the	North/South line	Feet from the	East/West line	County
---------------	---------	----------	-------	---------	---------------	------------------	---------------	----------------	--------

Dedicated Acres	Joint or Infill	Consolidation Code	Order No.
320	N		

**NO ALLOWABLE WILL BE ASSIGNED TO THIS COMPLETION UNTIL ALL INTERESTS HAVE BEEN CONSOLIDATED  
OR A NON-STANDARD UNIT HAS BEEN APPROVED BY THE DIVISION**

LOT 1 - 40.72 AC.	LOT 2 - 40.58 AC.	<div style="text-align: center;"> <b>OPERATOR CERTIFICATION</b>  <i>I hereby certify the the information contained herein is true and complete to the best of my knowledge and belief.</i>  <div style="text-align: right; margin-top: 10px;">             Signature            William R. Dannels            Printed Name            Division Drilling Supt.            Title            8/15/03            Date         </div> </div>
LOT 3 - 40.42 AC.	<div style="text-align: center;"> <b>SURVEYOR CERTIFICATION</b>  <i>I hereby certify that the well location shown on this plat was plotted from field notes of actual surveys made by me or under my supervision, and that the same is true and correct to the best of my belief.</i>  <div style="text-align: right; margin-top: 10px;">           August 23, 2001            Date Surveyed         </div> </div>	<div style="text-align: center;">             Certified by Gary L. Jones            Registered Professional Land Surveyor            New Mexico            No. 18797         </div>

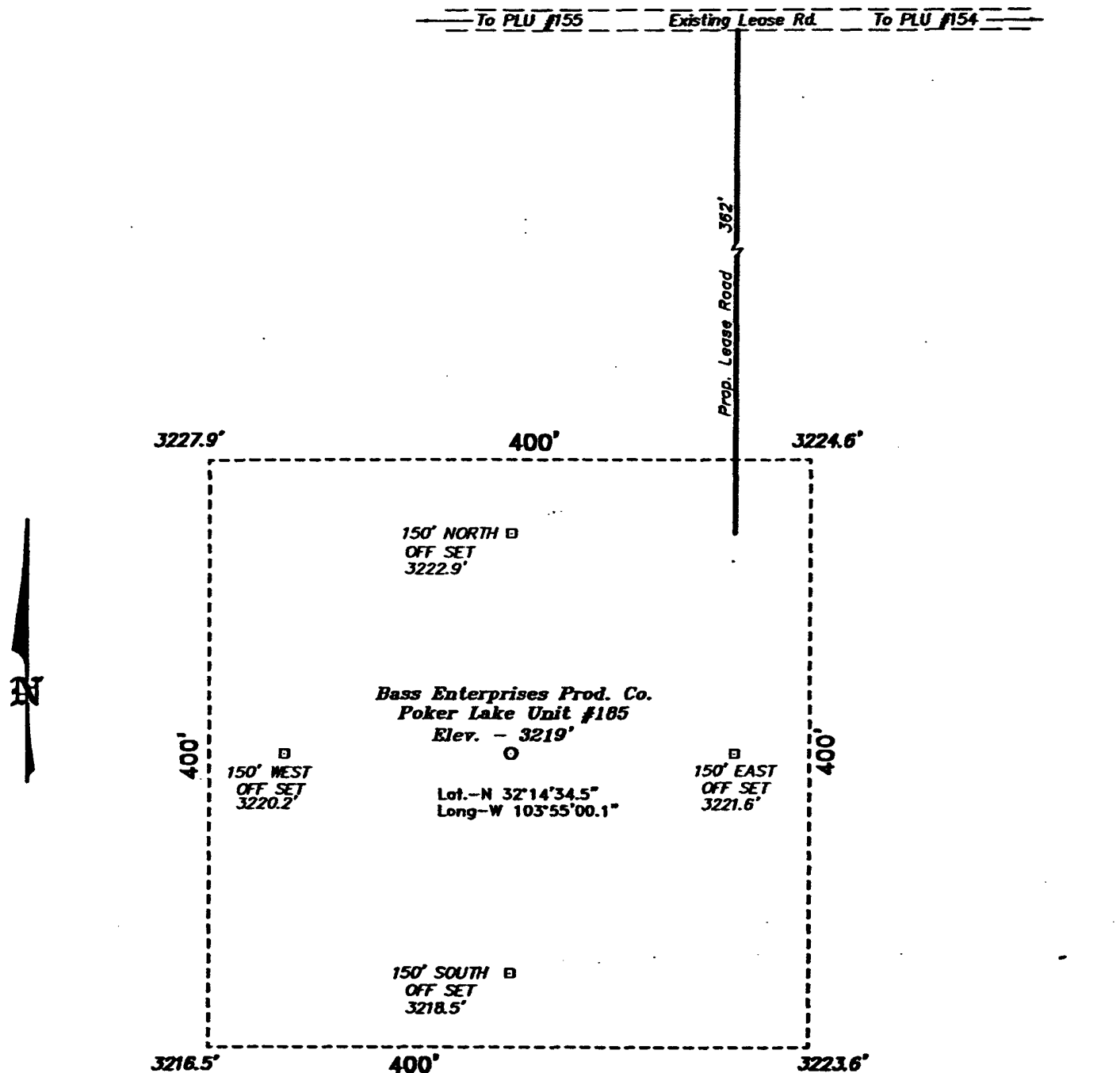
LOT 4 - 40.28 AC.

LAT - N32°14'28.5"  
 LONG - W108°55'08.1"

3227.9'  
 3224.6'  
 3218.5'  
 3223.8'

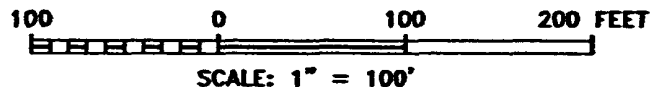
330

**SECTION 6, TOWNSHIP 24 SOUTH, RANGE 30 EAST, N.M.P.M.,  
EDDY COUNTY, NEW MEXICO.**



**DIRECTIONS TO LOCATION:**

FROM THE JUNCTION OF STATE HWY 128 & CO. RD. 793, GO SOUTH AND WEST ON CO. RD. 793 APPROX. 4.0 MILES TO A LEASE ROAD; THENCE SOUTH ON LEASE ROAD APPROX. 3.5 MILES TO A PROPOSED LEASE ROAD.



**BASIN SURVEYS** P.O. BOX 1786-HOBBS, NEW MEXICO

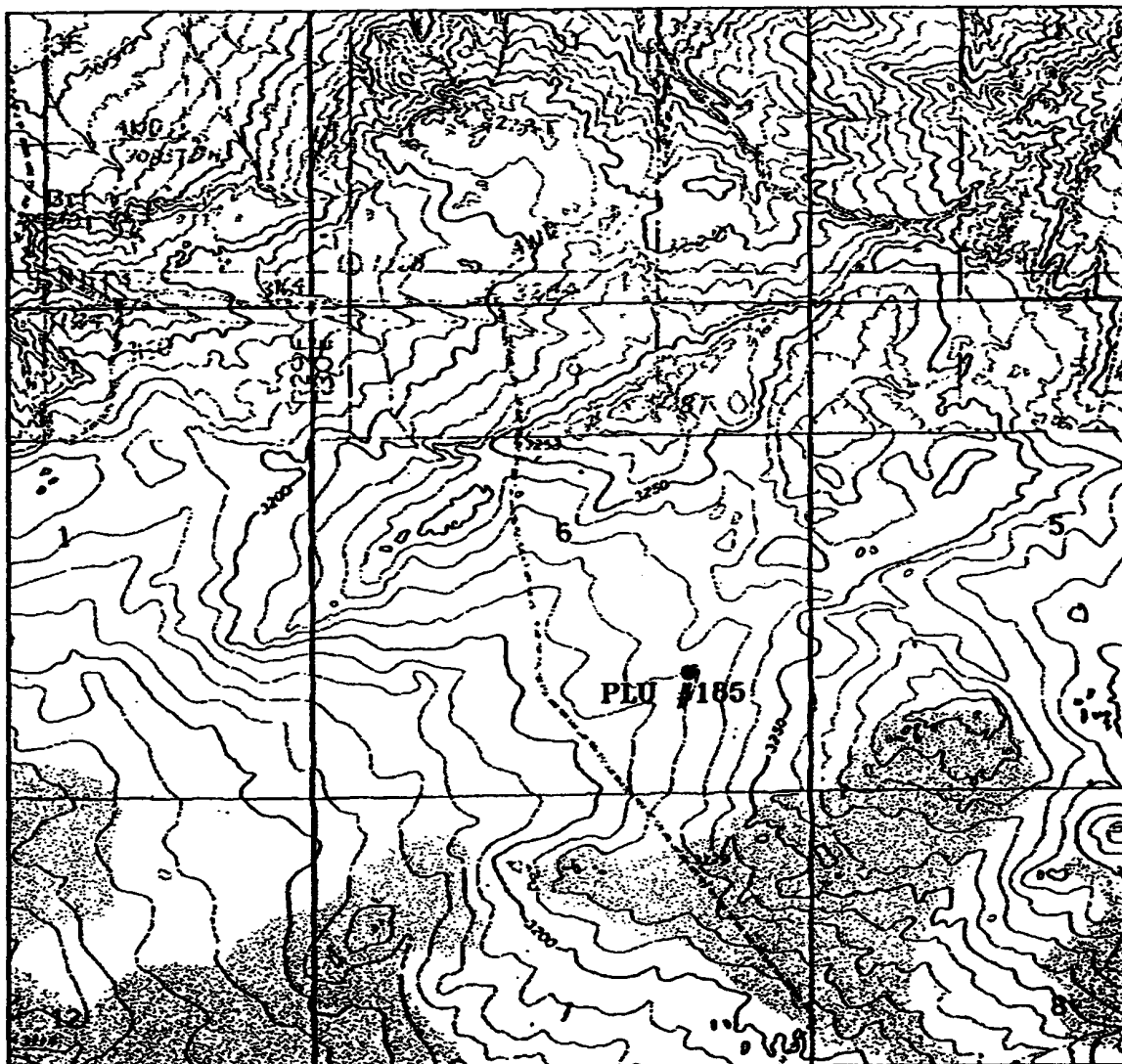
W.O. Number: 1810      Drawn By: K. GOAD  
Date: 08-28-2001      Disk: KJG CD#5 - 1810A.DWG

**BASS ENTERPRISES PRODUCTION CO.**

REF: Poker Lake Unit No. 185 / Well Pad Topo

THE POKER LAKE UNIT No. 185 LOCATED 1310' FROM  
THE SOUTH LINE AND 1330' FROM THE EAST LINE OF  
SECTION 6, TOWNSHIP 24 SOUTH, RANGE 30 EAST,  
N.M.P.M., EDDY COUNTY, NEW MEXICO.

Survey Date: 08-23-2001      Sheet 1 of 1 Sheets



**POKER LAKE UNIT #185**  
 Located at 1310' FSL and 1330' FEL  
 Section 6, Township 24 South, Range 30 East,  
 N.M.P.M., Eddy County, New Mexico.

**basin**  
**surveys**  
 focused on excellence  
 in the oilfield

P.O. Box 1786  
 1120 N. West County Rd.  
 Hobbs, New Mexico 88241  
 (505) 393-7318 - Office  
 (505) 392-3074 - Fax  
 basin-surveys.com

W.O. Number: 1810AA - KJG CD#5

Survey Date: 08-23-2001

Scale: 1" = 2000'

Date: 08-28-2001

**BASS ENTERPRISES  
 PRODUCTION CO.**

**EIGHT POINT DRILLING PROGRAM  
BASS ENTERPRISES PRODUCTION CO.**

**NAME OF WELL: POKER LAKE UNIT #185**

**LEGAL DESCRIPTION - SURFACE: 1310' FSL & 1330' FEL, Section 6, T24S, R30E, Eddy County, New Mexico.**

**POINT 1: ESTIMATED FORMATION TOPS**

(See No. 2 Below)

**POINT 2: WATER, OIL, GAS AND/OR MINERAL BEARING FORMATIONS**

Anticipated Formation Tops: KB 3245' (est)  
GL 3219'

<u>FORMATION</u>	<u>ESTIMATED TOP FROM KB</u>	<u>ESTIMATED SUBSEA TOP</u>	<u>BEARING</u>
T/Rustler	-415'	+ 2,830'	Barren
T/Salt	620'	+ 2,625'	Barren
B/Salt	3,305'	- 60'	Barren
T/Lamar Lime	3,543'	- 298'	Barren
T/Delaware Sands	3,573'	- 328'	Oil/Gas
T/Lower Brushy Canyon (8A)	7,030'	- 3,785'	Oil/Gas
T/Bone Spring	7,310'	- 4,065'	Oil/Gas
T/Wolfcamp	10,595'	- 7,350'	Barren
T/Atoka	12,708'	- 9,463'	Oil/Gas
T/Atoka Bank	13,006'	- 9,761'	Oil/Gas
T/Morrow	13,520'	- 10,275'	Oil/Gas
T/Middle Morrow	13,900'	- 10,659'	Oil/Gas
TD	14,319'	- 11,074'	

**POINT 3: CASING PROGRAM**

<u>TYPE</u>	<u>INTERVALS</u>	<u>PURPOSE</u>	<u>CONDITION</u>
20"	0' - 40'	Conductor	Contractor Discretion
13-3/8", 54.5#, J-55, STC	0' - 575'	Surface	New
9-5/8", 40#, N80, LTC	0' - 1,000'	Intermediate	New
9-5/8", 40#, K-55, LTC	1,000' - 3,550'	Intermediate	New
7", 26#, P-110, LTC	0' - 11,000'	Intermediate	New
7", 26#, S-95, LTC	11,000' - 11,400'	Intermediate	New
4-1/2", 13.5#, P110, LTC	11,100' - TD	Production Liner	New

#### POINT 4: PRESSURE CONTROL EQUIPMENT (SEE ATTACHED DIAGRAM)

A BOP equivalent to Diagram 1 will be nipped up on the surface and first intermediate casings. Bass requests a waiver to Onshore Order #2 which states the BOPs and associated equipment must be tested to the rated working pressure or 70% of the internal yield pressure. Our plans are to test the BOP stack, choke, kill lines, kelly cocks, inside BOP, etc. hydrostatically to 1,000 psi on the surface installation, then 3,000 psi on the first intermediate and 10,000 psi on the second intermediate casing. The annular will be tested to 2500 psi. In addition to the high pressure test, a low pressure (250 psi) test will be required. These tests will be performed:

- a) Upon installation
- b) After any component changes
- c) Fifteen days after a previous test
- d) As required by well conditions

A function test to insure that the preventers are operating correctly will be performed on each trip. See the attached Diagram 1 for the minimum criteria for the choke manifold.

A BOP equivalent to Diagram 2 will be nipped up on the second intermediate casing string. Bass will test the BOP stack, choke, kill lines, Kelly cocks, inside BOP's etc. hydrostatically to 10,000 psi. The annulus will be tested to 2500 psi. In addition to a high pressure test, a low pressure (250 psi) test will be required. These tests will be performed:

- a) Upon installation
- b) After any component changes
- c) Fifteen days after a previous test
- d) As required by well conditions

A function test to insure that the preventers are operating correctly will be performed on each trip. See the attached Diagram 2 for the minimum criteria for the choke manifold.

#### POINT 5: MUD PROGRAM

DEPTH	MUD TYPE	WEIGHT	FV	PV	YP	FL	Ph
0' - 575'	FW	8.5 - 9.2	45-35	NC	NC	NC	9.5
575' - 3,550'	CBW	9.2 - 10.0	28-30	NC	NC	NC	9.5
3,550' - 10,000'	FW	8.6 - 8.9	28-30	4	2	NC	9.5
10,000' - 11,400'	CBW	8.6 - 9.0	28-30	6	4	NC	9.5
11,400' - TD	CBW/Polymer	9.0 - 13.5	32-55	12-20	12-22	10-15	9.5-10.0

#### POINT 6: TECHNICAL STAGES OF OPERATION

##### A) TESTING

Drill stem tests may be performed on significant shows in zones of interest, but none are anticipated.

## B) LOGGING

### Run #1:

GR-CNL-LDT-LLD run from TD to first ICP, GR-CNL to surface. May run logging suite across Delaware prior to drilling below 7400' if mud log shows warrant.

### Run #2:

GR-CNL-LDT-LLD run from TD to second ICP, FMI across Morrow as needed.

## C) CORING

No cores are anticipated.

## D) CEMENT

<u>INTERVAL</u>	<u>AMOUNT SX</u>	<u>FT OF FILL</u>	<u>TYPE</u>	<u>GALS/SX</u>	<u>PPG</u>	<u>FT<sup>3</sup>/SX</u>
<u>SURFACE</u>						
Lead						
0' - 275' (100% excess)	210	275	Permian Basin Critical Zone + 1/8#/sx Pol-e-flake	10.30	12.80	1.89
Tail						
275'-575' (100% Excess)	340	300	Premium Plus + 2% CaCl <sub>2</sub> + 1/8#/sx Pol-e-flake	6.32	14.80	1.34
<u>INTERMEDIATE</u>						
<u>INTERVAL</u>	<u>AMOUNT SXS</u>	<u>FT OF FILL</u>	<u>TYPE</u>	<u>GALS/SX</u>	<u>PPG</u>	<u>FT<sup>3</sup>/SX</u>
Lead						
0' - 3000' (100% Excess)	720	3000	Interfill C + 1/8#/sx Pol-e-flake	14.10	11.90	2.45
Tail						
3000' - 3550' (100% Excess)	290	550	Premium Plus + 2% CaCl <sub>2</sub>	6.34	14.80	1.34
<u>PRODUCTION</u> (Two stage w/DV tool @ 8000' and circulate cement to 3100')						
<u>INTERVAL</u>	<u>AMOUNT SXS</u>	<u>FILL</u>	<u>TYPE</u>	<u>GALS/SX</u>	<u>PPG</u>	<u>FT<sup>3</sup>/SX</u>
<u>1<sup>st</sup> Stage</u>						
LEAD						
8000'-10,700' (50% excess)	250	2700	Interfill H + 5pps Gilsonite + 0.5% Halad 9 + 1/8 pps Pol-e-flake	13.61	11.90	2.46
TAIL						
10,700'-11,400' (50% excess)	100	700	Super H + 0.5% Halad 344 + 0.4% CFR3 + 5 pps Gilsonite + 1 pps Salt + 0.2% HRT	8.20	13.00	1.67
<u>2<sup>nd</sup> Stage</u>						
LEAD						
3100'-7,300' (50% excess)	400	4200	Interfill H + 1/8 pps Pol-e-flake + 0.5% Halad 9	14.00	11.90	2.45
TAIL						
7,300'-8,000' (50% excess)	100	700	Super H + 0.5% Halad 344 + 0.4% CFR3 + 5 pps Gilsonite + 1 pps Salt + 0.2% HRT	8.20	13.00	1.67
<u>PRODUCTION LINER</u>						
11,100'-14,500' (25% excess 300' overlap)	360	3400	Class H + 0.8% Halad 322 + 0.6% Halad 344 + 0.2% HR-7 + 5pps Microbond M	5.68	15.40	1.28

## E) DIRECTIONAL DRILLING

No directional services anticipated. A straight hole will be drilled to 14,500' TD.



**POINT 7: ANTICIPATED RESERVOIR CONDITIONS**

Normal pressures are anticipated throughout the Delaware, Bone Spring & Wolfcamp sections are slightly abnormally pressured, but are low perm; thus, we will be able to drill under balanced. The Atoka Bank may be abnormally pressured with expected BHP of 9250 psi (max) or an equivalent mud weight of 13.8 ppg. The Morrow expected BHP is 7800 (max) or an equivalent mud weight of 10.5 ppg @ TD. Due to the tight nature of the reservoir rock (high pressure, low volume), the well will be drilled under balanced utilizing a rotating head. The expected BHT at TD is 230°F. No H<sub>2</sub>S is anticipated.

**POINT 8: OTHER PERTINENT INFORMATION****A) Auxiliary Equipment**

Upper and lower kelly cocks. Full opening stab in valve on the rig floor.

**B) Anticipated Starting Date**

Upon approval

90 days drilling operations

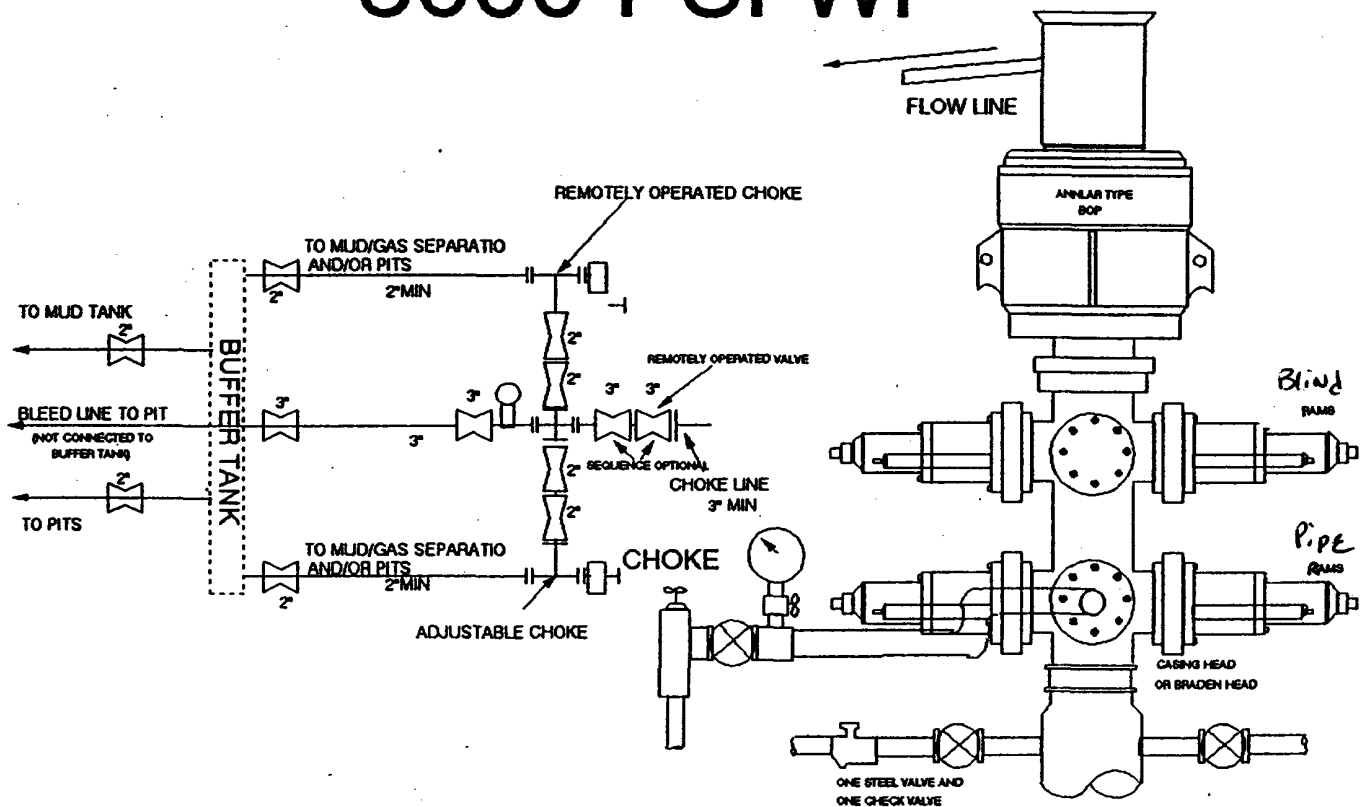
25 days completion operations

9/4/03  
Date

WRD/tlw *tlw*

William R. Dannels  
William R. Dannels

# 5000 PSI WP



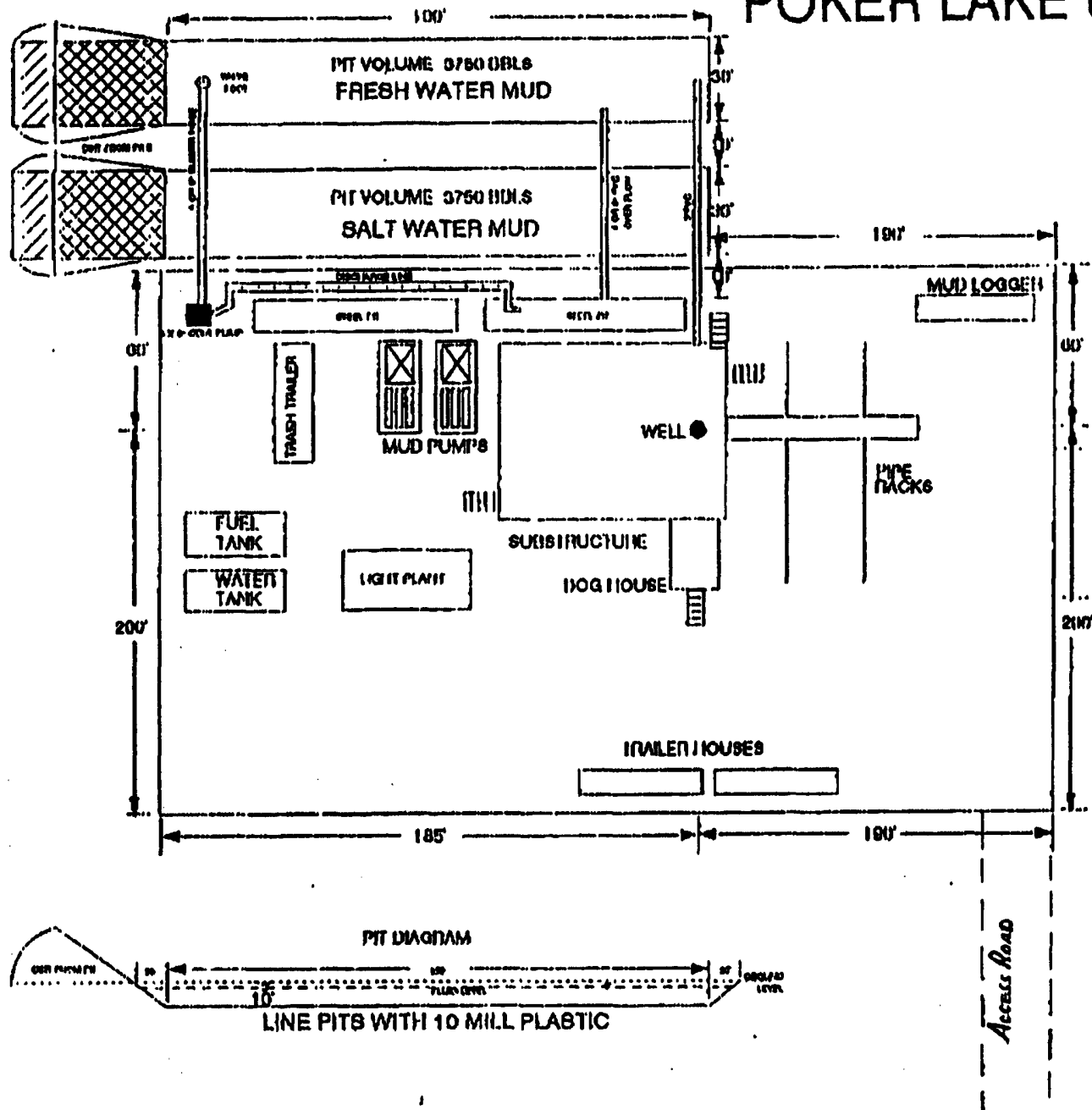
## THE FOLLOWING CONSTITUTE MINIMUM BLOWOUT PREVENTER REQUIREMENTS

- A. One double gate blowout preventer with lower rams for pipe and upper rams blind, all hydraulically controlled.
- B. Opening on preventers between rams to be flanged, studded or clamped and at least two inches in diameter.
- C. All connections from operating manifold to preventers to be all steel hose or tube a minimum of one inch in diameter.
- D. The available closing pressure shall be at least 15% in excess of that required with sufficient volume to operate (close, open, and re-close) the preventers.
- E. All connections to and from preventers to have a pressure rating equivalent to that of the BOP's.
- F. Manual controls to be installed before drilling cement plug.
- G. Valve to control flow through drill pipe to be located on rig floor.
- H. All chokes will be adjustable. Choke spool may be used between rams.

DIAGRAM 1

**DIAGRAM 1**

**EXHIBIT "A"**



(M-01-00) HQ:

0018/018

→ PAULA

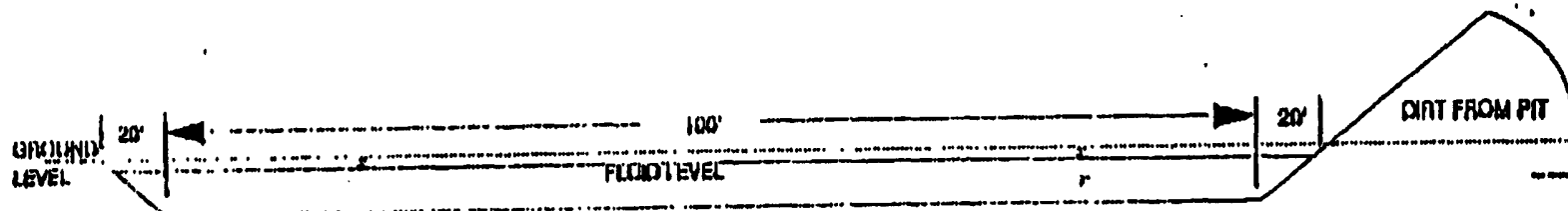
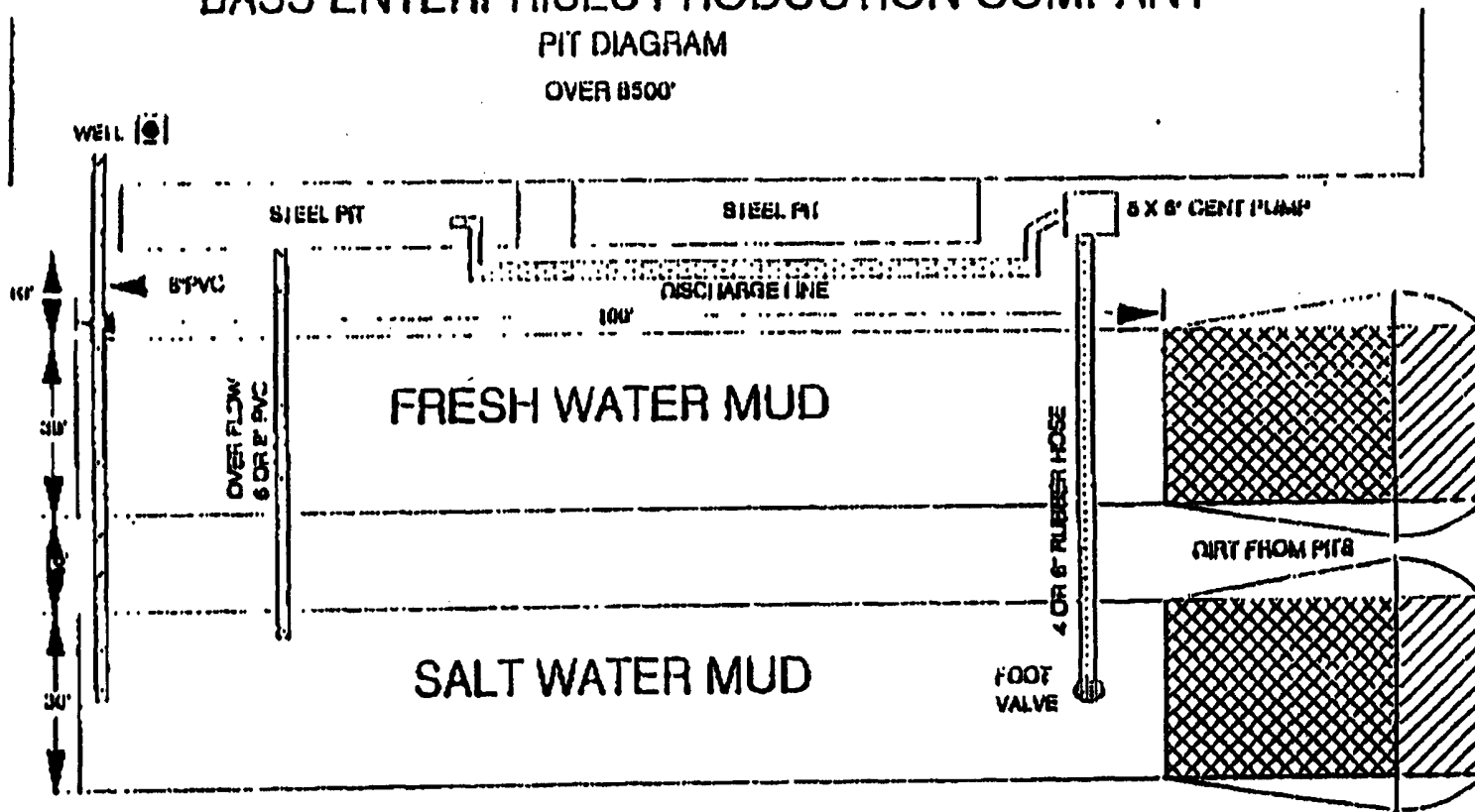
BEPCO

05/21/01 09:58 FAX 915 687 0329

# BASS ENTERPRISES PRODUCTION COMPANY

## PIT DIAGRAM

OVER 8500'



LINE PITS WITH 20 MILL PLASTIC

EXHIBIT A-1

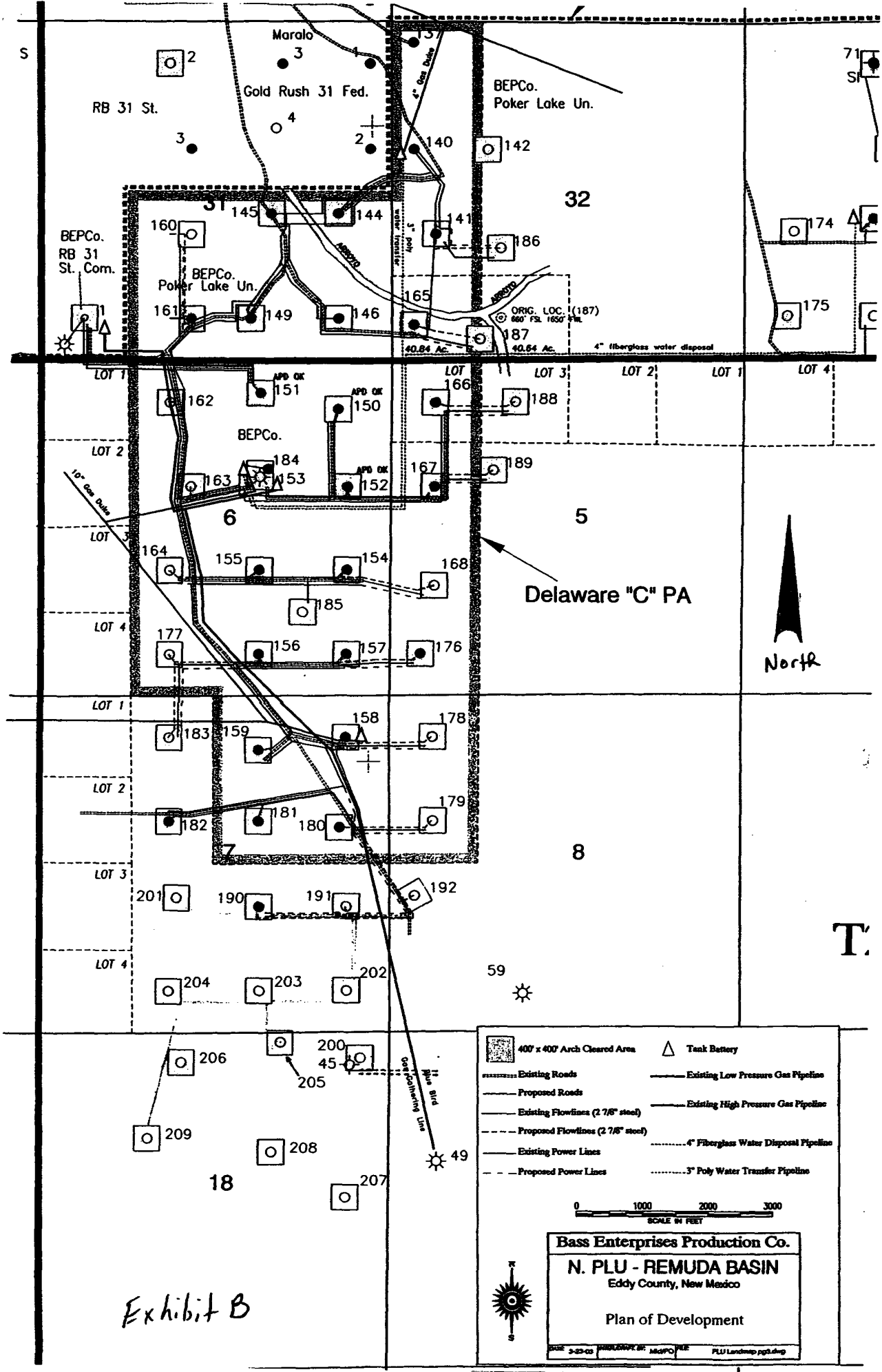


Exhibit B

