

District I
1625 N. French Dr., Hobbs, NM 88240
District II
1301 W. Grand Avenue, Artesia, NM 88210
District III
1000 Rio Brazos Road, Aztec NM 87410
District IV
1220 S. St. Francis Dr., Santa Fe, NM 87505

State of New Mexico
Energy Minerals and Natural Resources

Form C-101
June 16, 2008

Oil Conservation Division
1220 South St. Francis Dr.
Santa Fe, NM 87505

Submit to appropriate District Office
SEP 23 2008
☐ AMENDED REPORT
OCD-ARTESIA

APPLICATION FOR PERMIT TO DRILL, RE-ENTER, DEEPEN, PLUGBACK, OR ADD A ZONE

¹ Operator Name and Address RKI EXPLORATION, & PRODUCTION, LLC. 3817 NW EXPRESSWAY SUITE 950 OKLAHOMA CITY, OKLAHOMA 73112		² OGRID Number 246289
³ Property Code 303271		⁴ Well No. 26
⁵ Property Name PINNACLE STATE		⁶ API Number 30.015.36682
⁷ Proposed Pool 1 CULEBRA BLUFF SOUTH-BONE SPRING (15011)		⁸ Proposed Pool 2

⁷ Surface Location

UL or lot no.	Section	Township	Range	Lot Idn	Feet from the	North/South line	Feet from the	East/West line	County
I	36	22S	28E		1650'	SOUTH	330'	EAST	EDDY

⁸ Proposed Bottom Hole Location if Different From Surface

UL or lot no.	Section	Township	Range	Lot Idn	Feet from the	North/South line	Feet from the	East/West line	County

Additional Well Information

¹¹ Work Type Code N	¹² Well Type Code O	¹³ Cable/Rotary ROTARY	¹⁴ Lease Type Code S	¹⁵ Ground Level Elevation 3142'
¹⁶ Multiple NO	¹⁷ Proposed Depth 7070'	¹⁸ Formation BONE SPRING	¹⁹ Contractor PERMIAN DRILLING	²⁰ Spud Date WHEN APPROVED

²¹ Proposed Casing and Cement Program

Hole Size	Casing Size	Casing weight/foot	Setting Depth	Sacks of Cement	Estimated TOC
17 1/2"	14"	Conductor	80'	Redi-mix	Surface
11"	8 5/8"	32#	450'	181 Sx.	Surface
7 7/8"	5 1/2"	17#	7070'	541 Sx	Surface

²² Describe the proposed program. If this application is to DEEPEN or PLUG BACK, give the data on the present productive zone and proposed new productive zone. Describe the blowout prevention program, if any Use additional sheets if necessary.

Pits must be registered, operated,
maintained and closed per 19.15.17
[NMAC]

SEE ATTACHED SHEET FOR DETAILS.

²³ I hereby certify that the information given above is true and complete to the best of my knowledge and belief.		OIL CONSERVATION DIVISION	
Signature: <i>Joe T. Janica</i>		Approved by: <i>Jim W. Green</i>	
Printed name: Joe T. Janica		Title: District II Supervisor	
Title: Permit Eng.		Approval Date: 10/9/08	Expiration Date: 10/9/10
E-mail Address: joejanica@valornet.com			
Date: 09/18/08	Phone: 575-391-8503	Conditions of Approval Attached <input type="checkbox"/>	



DISTRICT I
1825 N. French Dr., Hobbs, NM 88240

DISTRICT II
1301 W. Grand Avenue, Artesia, NM 88210

DISTRICT III
1000 Rio Brazos Rd., Aztec, NM 87410

DISTRICT IV
1220 S. St. Francis Dr., Santa Fe, NM 87505

State of New Mexico
Energy, Minerals and Natural Resources Department

Form C-102
Revised October 12, 2005

Submit to Appropriate District Office
State Lease - 4 Copies
Fee Lease - 3 Copies

OIL CONSERVATION DIVISION
1220 South St. Francis Dr.
Santa Fe, New Mexico 87505

☐ AMENDED REPORT

WELL LOCATION AND ACREAGE DEDICATION PLAT

API Number 30-015-36682	Pool Code 15011	Pool Name CULEBRA BLUFF, SOUTH BONE SPRING, <i>South</i>
Property Code 303271	Property Name PINNACLE STATE	Well Number 26
OGRID No. 246289	Operator Name RKI EXPLORATION & PRODUCTION	Elevation 3142'

Surface Location

UL or lot No.	Section	Township	Range	Lot Idn	Feet from the	North/South line	Feet from the	East/West line	County
1	36	22 S	28 E		1650	SOUTH	330	EAST	EDDY

Bottom Hole Location If Different From Surface

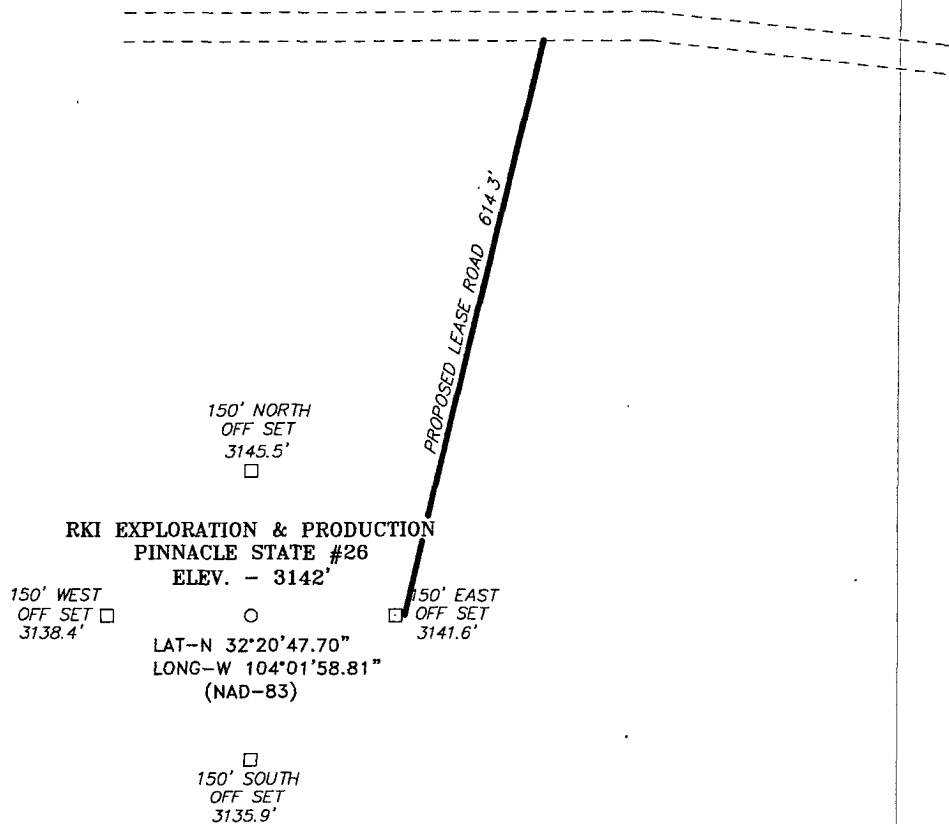
UL or lot No.	Section	Township	Range	Lot Idn	Feet from the	North/South line	Feet from the	East/West line	County
Dedicated Acres 40	Joint or Infill	Consolidation Code	Order No.						

NO ALLOWABLE WILL BE ASSIGNED TO THIS COMPLETION UNTIL ALL INTERESTS HAVE BEEN CONSOLIDATED
OR A NON-STANDARD UNIT HAS BEEN APPROVED BY THE DIVISION

	<p>OPERATOR CERTIFICATION</p> <p>I hereby certify that the information contained herein is true and complete to the best of my knowledge and belief, and that this organization either owns a working interest or unleased mineral interest in the land including the proposed bottom hole location pursuant to a contract with an owner of such a mineral or working interest, or to a voluntary pooling agreement or a compulsory pooling order heretofore entered by the division.</p> <p><i>Joe T. Janica</i> Signature Date</p> <p>Joe T. Janica 09/18/08 Printed Name</p>
	<p>SURVEYOR CERTIFICATION</p> <p>I hereby certify that the well location shown on this plat was plotted from field notes of actual surveys made by me or under my supervision, and that the same is true and correct to the best of my belief.</p> <p>MAY 2008 Date Surveyed</p> <p>NEW MEXICO Signature & Seal of Professional Surveyor 7977</p> <p>W.O. Jones Certificate No. Gary L. Jones 7977</p> <p>BASIN SURVEYS</p>
	<p>SURFACE LOCATION LAT N.: 32°20'47.70" LONG W.: 104°01'58.81" SPC N.: 489948.8 E.: 634085.1 (NAD-83)</p>
	<p>VA-3479</p>

1. Drill 17½" hole to 80'. Set 80' of 14" conductor pipe and cement to surface with Redi-mix.
2. Drill 11" hole to 450'. Run and set 450' of 8 5/8" 32# J-55 ST&C casing. Cement with 181 Sx. of Class "C" cement + 2% CaCl, + ¼# Flocale/Sx. Yield 1.34. circulate cement to surface.
3. Drill 7 7/8" hole to 7070'. Run and set 7070' of 5½" 17# J-55 LT&C casing. Cement with 541 Sx. of cement as follows: 341 Sx. of 40/60 (D961/D124) + 2% retarder + 1% Antisettling Agent + 0.3% Dispersant + 0.2% Antifoaming Agent, Yield 2.1, tail in with 200 Sx. of 40/60 (D961/D124) + 20.2% Retarder + 1% Antisettling Agent + 0.3% Dispersant + 0.2% Antifoaming Agent + 0.125#/Sx. Poly Flake. Yield 2.27. Circulate cement to surface.

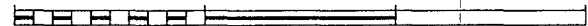
SECTION 36, TOWNSHIP 22 SOUTH, RANGE 28 EAST, N.M.P.M.,
EDDY COUNTY, NEW MEXICO.



DIRECTIONS TO LOCATION:

FROM THE JUNCTION OF HWY 62-180 AND REFINERY ROAD, GO SOUTHERLY ON REFINERY ROAD FOR 10.3 MILES TO LEASE ROAD, ON LEASE ROAD GO NORTHEAST 0.9 MILES, THENCE SOUTHEAST WINDING NORTHEAST 1.2 MILES TO WELL PAD AND PROPOSED LEASE ROAD.

200 0 200 400 FEET



SCALE: 1" = 200'

RKI EXPLORATION & PRODUCTION

REF: PINNACLE STATE #26 / Well Pad Topo

THE PINNACLE STATE #26 LOCATED 1650' FROM
THE SOUTH LINE AND 330' FROM THE EAST LINE OF
SECTION 36, TOWNSHIP 22 SOUTH, RANGE 28 EAST,
N.M.P.M., EDDY COUNTY, NEW MEXICO.

BASIN SURVEYS P.O. BOX 1786-HOBBS, NEW MEXICO

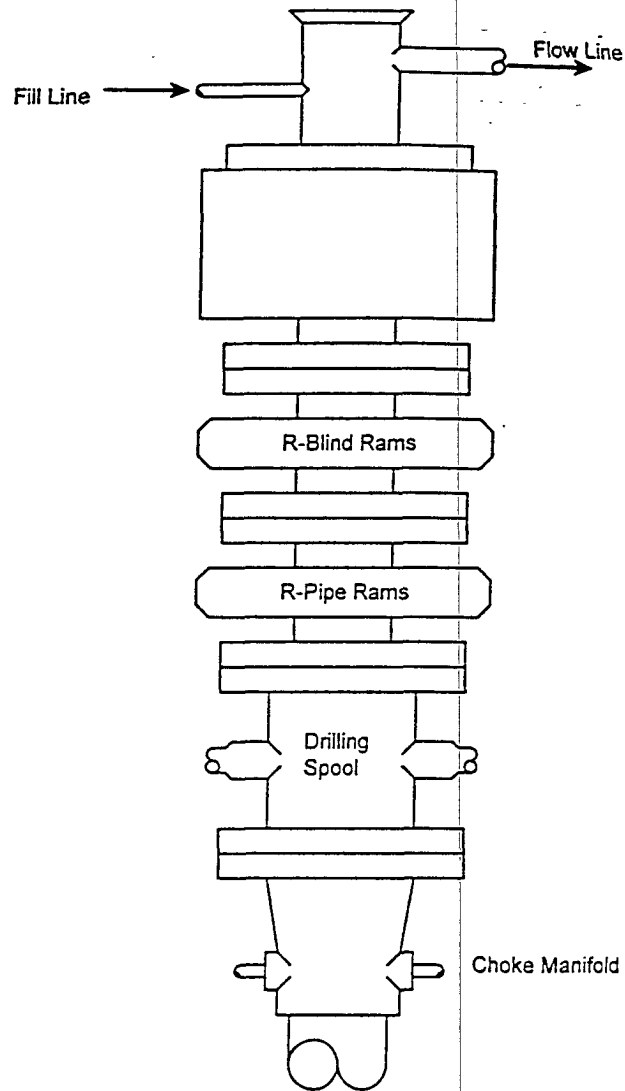
W.O. Number: 19604 Drawn By: J. M. SMALL

Date: 05-08-2008 Disk: JMS 19604

Survey Dgte: 05-07-2008 Sheet 1 of 1 Sheets

BLOWOUT PREVENTER SYSTEM

3000 PSI



Type 900 SERIES
3000 PSI WP

Choke Manifold Assembly for 5M WP System

