

SEP 23 2008

District I
1625 N French Dr., Hobbs, NM 88240
District II
1301 W Grand Avenue, Artesia, NM 88210
District III
1000 Rio Brazos Road, Aztec NM 87410
District IV
1220 S St Francis Dr., Santa Fe, NM 87505

State of New Mexico
Energy Minerals and Natural Resources



Oil Conservation Division
1220 South St. Francis Dr.
Santa Fe, NM 87505

OGD-ARTESIA Form C-101
June 16, 2008

Submit to appropriate District Office

☐ AMENDED REPORT

30-005-64069

APPLICATION FOR PERMIT TO DRILL, RE-ENTER, DEEPEN, PLUGBACK, OR ADD A ZONE

Operator Name and Address Lime Rock Resources A, L.P. 1111 Bagby St., Suite 4600 Houston, TX 77002		OGRID Number 255333
Property Code 304300	Property Name Willow Creek BFI State	Well No 8
Proposed Pool 1 Pecod Slope; Abo		Proposed Pool 2

Surface Location

UL or lot no	Section	Township	Range	Lot Idn	Feet from the	North/South line	Feet from the	East/West line	County
D	31	4-S	25-E	Lot #1	990'	North	990	West	Chaves

Proposed Bottom Hole Location If Different From Surface

UL or lot no	Section	Township	Range	Lot Idn	Feet from the	North/South line	Feet from the	East/West line	County

Additional Well Information

Work Type Code N	Well Type Code G	Cable/Rotary R	Lease Type Code S	Ground Level Elevation 3925'
Multiple N	Proposed Depth 4300'	Formation Abo	Contractor United Drilling	Spud Date 10/06/08

Proposed Casing and Cement Program

Hole Size	Casing Size	Casing weight/foot	Setting Depth	Sacks of Cement	Estimated TOC
12 1/4"	8 5/8"	24#	1,000'	475 sx "C"	Surface
7 7/8"	4 1/2"	11.6#	4,300'	350 sx "C"	2800' 500'

Describe the proposed program. If this application is to DEEPEN or PLUG BACK, give the data on the present productive zone and proposed new productive zone.

Describe the blowout prevention program, if any. Use additional sheets if necessary.

Drilling operations will utilize a closed loop system with fresh waterdrilling surface hole and brine fluids after. BOP will be a 3M Double Ram Shaffer with annular. Plan to drill a 12 1/4" hole to approximately 1000', then set and cement 8 5/8" casing to 1000'. Class "C" cement will be circulated to surface. Drill 7 7/8" hole to approx. 4300' at T.D. Run OH logs. Set 4 1/2" casing to T.D. and cement will be circulated back to 2800' (TOC). Will perforate Abo interval. Stimulate as necessary for optimum production. Produce well by flowing.

H2S levels are not expected to be high enough to require a H2S program.

Pits must be registered, operated, maintained and closed per 19.15.17 [NMAC]

I complete to the best

OIL CONSERVATION DIVISION

Approved by

Jim W. Green
District II Supervisor

Printed name:

George R. Smith

Title

Title Agent for Lime Rock Resources A, L.P.

Approval Date 10/8/08

Expiration Date 10/08/10

E-mail Address grsmith1@prodigy.net

Date 9/19/08

Phone 575-623-4940

Conditions of Approval Attached ☐

ENTERED
10/23/08

DISTRICT I
1625 N. FRENCH DR., HOBBS, NM 88240

DISTRICT II
1301 W. GRAND AVENUE, ARTESIA, NM 88210

DISTRICT III
1000 Rio Brazos Rd., Aztec, NM 87410

DISTRICT IV
1220 S. ST. FRANCIS DR., SANTA FE, NM 87505

State of New Mexico

Energy, Minerals and Natural Resources Department

OIL CONSERVATION DIVISION
1220 SOUTH ST. FRANCIS DR.
Santa Fe, New Mexico 87505

Form C-102
Revised October 12, 2005
Submit to Appropriate District Office
State Lease - 4 Copies
Fee Lease - 3 Copies

WELL LOCATION AND ACREAGE DEDICATION PLAT

☐ AMENDED REPORT

API Number 30.005.64069	Pool Code 82730	Pool Name Pecos Slope Abo
Property Code 304300	Property Name WILLOW CREEK BFI STATE	Well Number 8259
OGRID No. 255333	Operator Name LIME ROCK RESOURCES A, L.P.	Elevation 3925'

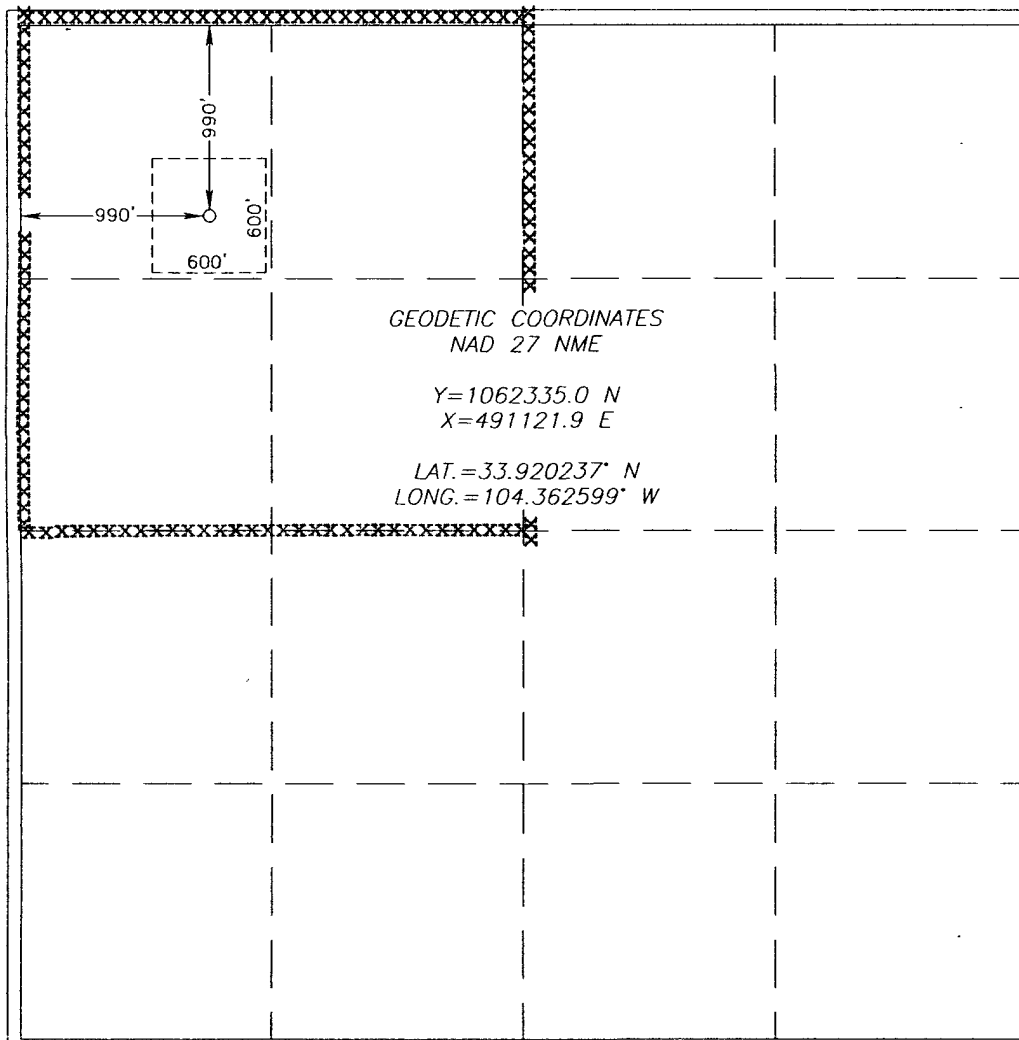
Surface Location

UL or lot No.	Section	Township	Range	Lot Idn	Feet from the	North/South line	Feet from the	East/West line	County
D	31	4-S	25-E		990	NORTH	990	WEST	CHAVES

Bottom Hole Location If Different From Surface

UL or lot No.	Section	Township	Range	Lot Idn	Feet from the	North/South line	Feet from the	East/West line	County
Dedicated Acres 160	Joint or Infill	Consolidation Code	Order No.						

NO ALLOWABLE WILL BE ASSIGNED TO THIS COMPLETION UNTIL ALL INTERESTS HAVE BEEN CONSOLIDATED
OR A NON-STANDARD UNIT HAS BEEN APPROVED BY THE DIVISION



OPERATOR CERTIFICATION

I hereby certify that the information herein is true and complete to the best of my knowledge and belief, and that this organization either owns a working interest or unleased mineral interest in the land including the proposed bottom hole location or has a right to drill this well at this location pursuant to a contract with an owner of such mineral or working interest, or to a voluntary pooling agreement or a compulsory pooling order heretofore entered by the division.

George R. Smith 9/19/08
Signature Date

George R. Smith
Printed Name
Agent for Lime Rock Res.

SURVEYOR CERTIFICATION

I hereby certify that the well location shown on this plat was plotted from field notes of actual surveys made by me or under my supervision, and that the same is true and correct to the best of my belief.

RONALD J. EIDSON
Date Surveyed
Signature & Seal of Professional Surveyor
JC
3239
9/19/08

Certificate No. GARY EIDSON 12641
RONALD J. EIDSON 3239

BOP DIAGRAM 3000# SYSTEM

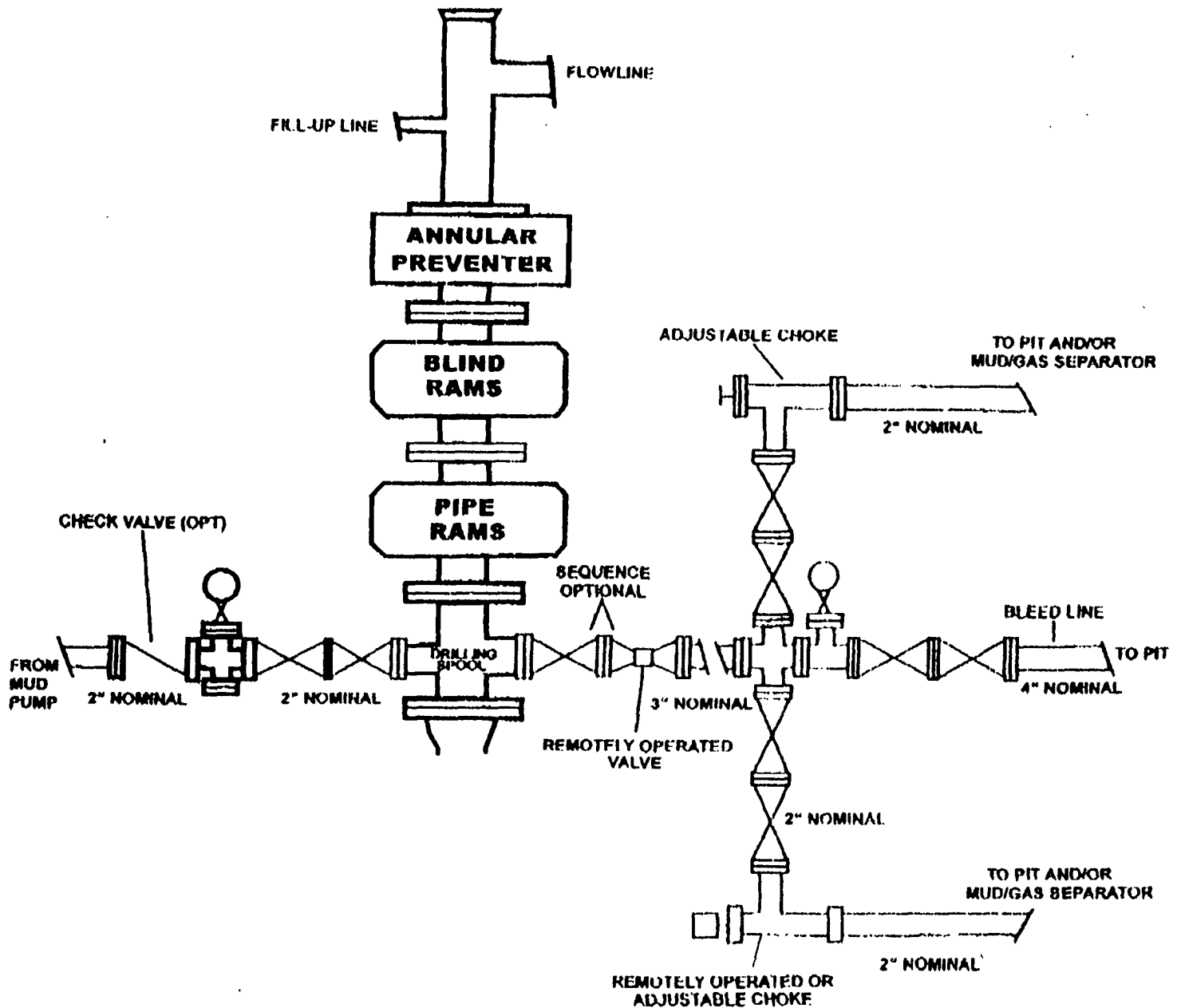


EXHIBIT "A"
Lime Rock Resources A, L.P.
Willow Creek BFI State, Well No. 8
BOP Specifications