

District I  
1625 N French Dr, Hobbs, NM 88240  
District II  
1301 W Grand Avenue, Artesia, NM 88210  
District III  
1000 Rio Brazos Rd, Aztec, NM 87410  
District IV  
1220 S. St. Francis Dr., Santa Fe, NM 87505

State of New Mexico  
Energy, Minerals & Natural Resources

FEB 20 2009

Form C-104  
Revised June 10, 2003

Oil Conservation Division  
1220 South St. Francis Dr.  
Santa Fe, NM 87505

Submit to Appropriate District Office  
5 Copies

☐ AMENDED REPORT

**I. REQUEST FOR ALLOWABLE AND AUTHORIZATION TO TRANSPORT**

<sup>1</sup> Operator name and Address: Chevron USA Inc. COG Operating LLC (Agent) 550 W. Texas Avenue, Suite 1300 Midland, TX 79701		<sup>2</sup> OGRID Number 229137
		<sup>3</sup> Reason for Filing Code/ Effective Date NW effective 01/21/09
<sup>4</sup> API Number 30 - 015-36598	<sup>5</sup> Pool Name Fren;Glorieta Yeso	<sup>6</sup> Pool Code 26770
<sup>7</sup> Property Code 305607	<sup>8</sup> Property Name Skelly Unit	<sup>9</sup> Well Number 992

**I. <sup>10</sup> Surface Location**

UL or lot no.	Section	Township	Range	Lot.Idn	Feet from the	North/South Line	Feet from the	East/West line	County
E	14	17S	31E		1750	North	10	West	Eddy

**<sup>11</sup> Bottom Hole Location**

UL or lot no.	Section	Township	Range	Lot Idn	Feet from the	North/South line	Feet from the	East/West line	County
E	14	17S	31E		1650	North	330	West	Eddy
<sup>12</sup> Lse Code F	<sup>13</sup> Producing Method Code P	<sup>14</sup> Gas Connection Date 01/21/09	<sup>15</sup> C-129 Permit Number	<sup>16</sup> C-129 Effective Date	<sup>17</sup> C-129 Expiration Date				

**III. Oil and Gas Transporters**

<sup>18</sup> Transporter OGRID	<sup>19</sup> Transporter Name and Address	<sup>20</sup> POD	<sup>21</sup> O/G	<sup>22</sup> POD ULSTR Location and Description
15694	Navajo Refining Co. Pipeline Div.	5105242	O	
221115	Frontier Field Services	5105244	G	

**IV. Produced Water**

<sup>23</sup> POD 5105246	<sup>24</sup> POD ULSTR Location and Description
------------------------------	--

**V. Well Completion Data**

<sup>25</sup> Spud Date 12/18/08	<sup>26</sup> Ready Date 01/23/09	<sup>27</sup> TD 6700	<sup>28</sup> PBTB 6642	<sup>29</sup> Perforations 5196 - 6410	<sup>30</sup> DHC, MC
<sup>31</sup> Hole Size	<sup>32</sup> Casing & Tubing Size	<sup>33</sup> Depth Set	<sup>34</sup> Sacks Cement		
17-1/2	13-3/8	442	232		
11	8-5/8	1844	700		
7-7/8	5-1/2	6700	1100		
	2-7/8	6127			

**VI. Well Test Data**

<sup>35</sup> Date New Oil 01/21/09	<sup>36</sup> Gas Delivery Date 01/21/09	<sup>37</sup> Test Date 02/12/09	<sup>38</sup> Test Length 24	<sup>39</sup> Tbg. Pressure 70	<sup>40</sup> Csg. Pressure 70
<sup>41</sup> Choke Size	<sup>42</sup> Oil 28	<sup>43</sup> Water 587	<sup>44</sup> Gas 54	<sup>45</sup> AOF	<sup>46</sup> Test Method P

<sup>47</sup> I hereby certify that the rules of the Oil Conservation Division have been complied with and that the information given above is true and complete to the best of my knowledge and belief.  
Signature:

Printed name: Robyn Odom

Title: Regulatory Analyst

E-mail Address: rododom@conchoresources.com

Date: 02/19/09 Phone: 432-685-4385

OIL CONSERVATION DIVISION

Approved by:

Title:

Approval Date:

Jacqui Reent  
Geologist  
3/13/09

District I  
1625 N. French Dr., Hobbs, NM 88240  
District II  
1301 W. Grand Avenue, Artesia, NM 88210  
District III  
1000 Rio Brazos Rd., Aztec, NM 87410  
District IV  
1220 S. St. Francis Dr., Santa Fe, NM 87505

State of New Mexico  
Energy, Minerals & Natural Resources Department  
OIL CONSERVATION DIVISION  
1220 South St. Francis Dr.  
Santa Fe, NM 87505

Form C-402  
Revised October 12, 2005  
Submit to Appropriate District Office  
State Lease- 4 Copies  
Fee Lease- 3 Copies

☐ AMENDED REPORT

WELL LOCATION AND ACREAGE DEDICATION PLAT

API Number 30-015- 36598	Pool Code 26770	Pool Name FREN; GLORIFETA YESO
Property Code 305607	Property Name SKELLY UNIT	Well Number 992
OGRID No. 229137	Operator Name COG OPERATING LLC.	Elevation 3896.2'

Surface Location

UL or lot no. E	Section 14	Township 17 SOUTH	Range 31 EAST, N.M.P.M.	Lot Idn	Feet from the 1750'	North/South line NORTH	Feet from the 10'	East/West line WEST	County EDDY
--------------------	---------------	----------------------	----------------------------	---------	------------------------	---------------------------	----------------------	------------------------	----------------

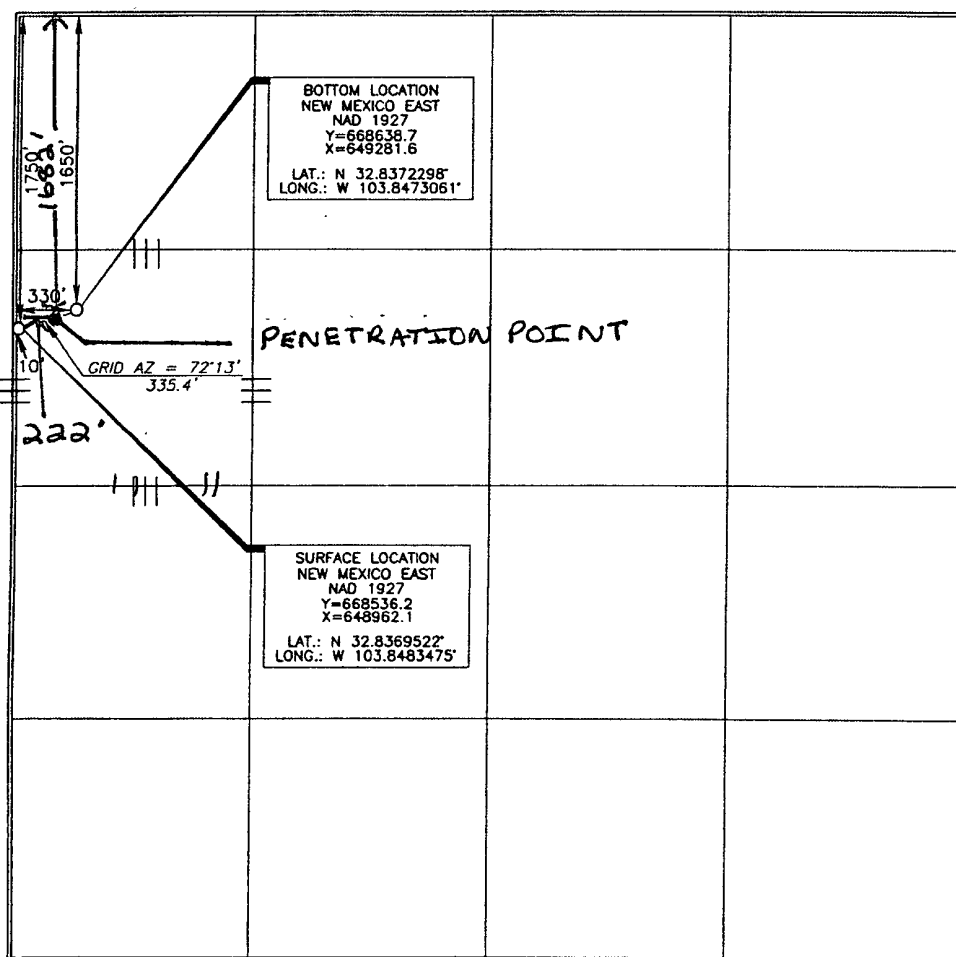
Bottom Hole Location If Different From Surface

UL or lot no. E	Section 14	Township 17 SOUTH	Range 31 EAST, N.M.P.M.	Lot Idn	Feet from the 1650'	North/South line NORTH	Feet from the 330'	East/West line WEST	County EDDY
--------------------	---------------	----------------------	----------------------------	---------	------------------------	---------------------------	-----------------------	------------------------	----------------

Dedicated Acres 40	Joint or Infill	Consolidation Code	Order No.
-----------------------	-----------------	--------------------	-----------

No allowable will be assigned to this completion until all interests have been consolidated or a non-standard unit has been approved by the division.

NSL-5910



OPERATOR CERTIFICATION

I hereby certify that the information contained herein is true and complete to the best of my knowledge and belief, and that this organization either owns a working interest or unleased mineral interest in the land including the proposed bottom hole location or has a right to drill this well at this location pursuant to a contract with an owner of such a mineral or working interest, or to a voluntary pooling agreement or a compulsory pooling order heretofore entered by the division.

*Phyllis A. Edwards* 6-20-08  
Signature Date

Phyllis A. Edwards  
Printed Name Regulatory Analyst

SURVEYOR CERTIFICATION

I hereby certify that the well location shown on this plat was plotted from field notes, or actual survey made by me or under my supervision, and that the same is true and correct to the best of my belief.

15079  
Date of Survey 10/10/2008

Signature and Seal of Professional Surveyor

*Tommy J. Reed* 6/12/2008  
Certificate Number 15079

WO# 080510WL-b (KA)