

District I

1625 N. French Dr., Hobbs, NM 88240

District II

811 South First, Artesia, NM 88210

District III

1000 Rio Brazos Road, Aztec, NM 87410

District IV

1220 S. Francis Dr., Santa Fe, NM 87504

State of New Mexico
Energy Minerals and Natural Resources**RECEIVED**

NOV - 7 2003

Oil Conservation Division

1220 S. St. Francis Dr.

Santa Fe, NM 87504

OCD-ARTESIA

Form C-101

Revised March 17, 1999

Submit to appropriate District Office

State Lease - 6 Copies

Fee Lease - 5 Copies

☐ AMENDED REPORT**APPLICATION FOR PERMIT TO DRILL, RE-ENTER, DEEPEN, PLUGBACK, OR ADD A ZONE**

¹ Operator Name and Address The Eastland Oil Company P.O. Box 3488 Midland, Texas 79702		² OGRID Number 022767
⁴ Property Code 30655	⁵ Property Name Harroun A	³ API Number 30 - 015 - 33146
		⁶ Well No. 7

⁷ Surface Location

UL or lot no.	Section	Township	Range	Lot Idn	Feet from the	North/South line	Feet from the	East/West line	County
M	28	22-S	28-E		330	South	530	West	Eddy

⁸ Proposed Bottom Hole Location If Different From Surface

UL or lot no.	Section	Township	Range	Lot Idn	Feet from the	North/South line	Feet from the	East/West line	County
⁹ Proposed Pool 1 Herradura Bend, Delaware						¹⁰ Proposed Pool 2			

¹¹ Work Type Code N	¹² Well Type Code O	¹³ Cable/Rotary c/R	¹⁴ Lease Type Code P	¹⁵ Ground Level Elevation 3036
¹⁶ Multiple No	¹⁷ Proposed Depth 2600	¹⁸ Formation Delaware Sand	¹⁹ Contractor	²⁰ Spud Date 12-15-03

²¹ Proposed Casing and Cement Program

Hole Size	Casing Size	Casing weight/foot	Setting Depth	Sacks of Cement	Estimated TOC
12 1/4"	8 5/8"	24	400	300	surface
7 7/8"	5 1/2"	14	2450	500	surface

²² Describe the proposed program. If this application is to DEEPEN or PLUG BACK, give the data on the present productive zone and proposed new productive zone.
Describe the blowout prevention program, if any. Use additional sheets if necessary.

Propose to drill with Rotary Rig to approximately 2450' in Black lime.
Run and set production casing. Move off Rotary rig. Move on cable tool rig,
bail water out of casing, drill out shoe and pay zone.
Complete well in open hole.
BOP will be installed on 8 5/8" surface. Cable tool control head on 5 1/2".

²³ I hereby certify that the information given above is true and complete to the best of my knowledge and belief.		OIL CONSERVATION DIVISION	
Signature: <i>Travis Reed</i>		Approved by: <i>Jim W. Reed</i>	
Printed name: Travis Reed		Title: <i>District Supervisor</i>	
Title: Agent		Approval Date: DEC 16 2003 Expiration Date: DEC 16 2004	
Date: 10-30-03	Phone: 432-683-6293	Conditions of Approval: Attached <input type="checkbox"/>	

DISTRICT I
P.O. Box 1880, Hobbs, NM 88241-1880

DISTRICT II
P.O. Drawer DD, Artesia, NM 88211-0710

DISTRICT III
1000 Rio Brazos Rd., Aztec, NM 87410

DISTRICT IV
P.O. BOX 2088, SANTA FE, N.M. 87504-2088

State of New Mexico
Energy, Minerals and Natural Resources Department

OIL CONSERVATION DIVISION
P.O. Box 2088
Santa Fe, New Mexico 87504-2088

Form C-102
Revised February 10, 1994
Submit to Appropriate District Office
State Lease - 4 Copies
Fee Lease - 3 Copies

WELL LOCATION AND ACREAGE DEDICATION PLAT

☐ AMENDED REPORT

API Number	Pool Code 003902	Pool Name Herradura Bend Delaware
Property Code 30655	Property Name HARROUN A	Well Number 6
OGRID No. 022767	Operator Name THE EASTLAND OIL COMPANY	Elevation 3048'

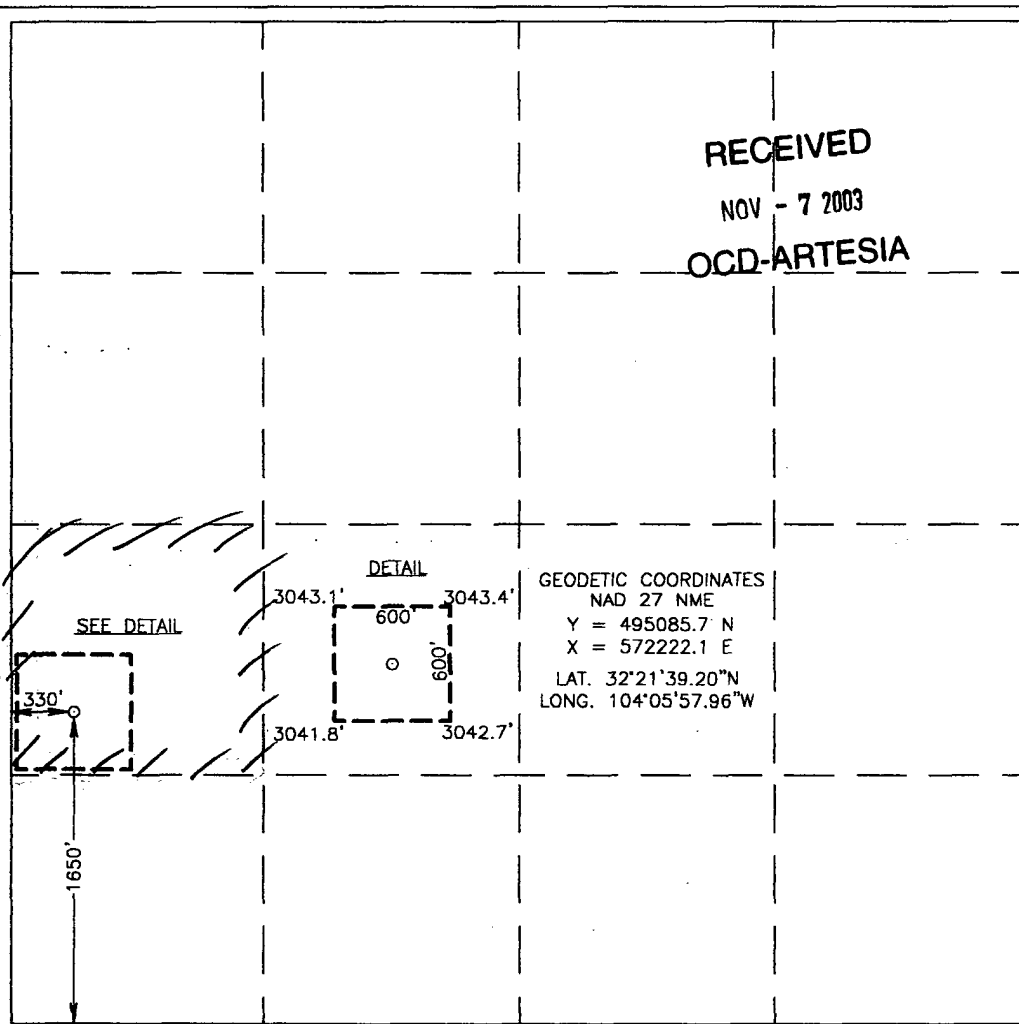
Surface Location

UL or lot No. L	Section 28	Township 22-S	Range 28-E	Lot Idn	Feet from the 1650	North/South line SOUTH	Feet from the 330	East/West line WEST	County EDDY
--------------------	---------------	------------------	---------------	---------	-----------------------	---------------------------	----------------------	------------------------	----------------

Bottom Hole Location If Different From Surface

UL or lot No.	Section	Township	Range	Lot Idn	Feet from the	North/South line	Feet from the	East/West line	County
Dedicated Acres 40	Joint or Infill	Consolidation Code	Order No.						

NO ALLOWABLE WILL BE ASSIGNED TO THIS COMPLETION UNTIL ALL INTERESTS HAVE BEEN CONSOLIDATED
OR A NON-STANDARD UNIT HAS BEEN APPROVED BY THE DIVISION



OPERATOR CERTIFICATION	
I hereby certify the the information contained herein is true and complete to the best of my knowledge and belief.	
<u>Travis Reed</u> Signature	
Travis Reed Printed Name	
Agent	
Title	
10-30-03 Date	
SURVEYOR CERTIFICATION	
I hereby certify that the well location shown on this plat was plotted from field notes of actual surveys made by me or under my supervision, and that the same is true and correct to the best of my belief.	
SEPTEMBER 26, 2003	
Date Surveyed	
Signature & Seal of Professional Surveyor	
<u>Gary E. Eulson</u> 10/2/03 03.11106BS	
Certificate No. GARY EULSON	12641

The Eastland Oil Company
Re: Warren "A" Lease Well No. 6 + 7
Section 28, T22S, R-28E, Eddy Co. N.M.

There is no H₂S gas at this depth in this area.
No need need gas plan.

Travis Reed