

State of New Mexico  
Energy, Minerals & Natural Resources Department  
OIL CONSERVATION DIVISION  
1220 South St. Francis Dr.  
Santa Fe, NM 87505

DEC 16 2009  
Submit to  
NMOCD ARTESIA

DEC 16 2009

**NMOC D ARTESIA**

Revised October 12, 2005  
Appropriate District Office  
State Lease- 4 Copies  
Fee Lease- 3 Copies

☒ AMENDED REPORT

API Number 30-015-26377	Pool Code 39360	Pool Name Livingston Ridge Delaware ✓
Property Code 304816	Property Name FEDERAL 23	Well Number 1
OGRID No. 16696	Operator Name OXY USA INC.	Elevation 3574'

UL or lot no.	Section	Township	Range	Lot Idn	Feet from the	North/South line	Feet from the	East/West line	County
P	23	22 SOUTH	31 EAST, N.M.P.M.		660	SOUTH	660	EAST	EDDY

UL or lot no.	Section	Township	Range	Lot Idn	Feet from the	North/South line	Feet from the	East/West line	County
---------------	---------	----------	-------	---------	---------------	------------------	---------------	----------------	--------

Dedicated Acres	Joint or Infill	Consolidation Code	Order No.
8.23	Y		

No allowable will be assigned to this completion until all interests have been consolidated or a non-standard unit has been approved by the division.

I hereby certify that the information contained herein is true and complete to the best of my knowledge and belief, and that this organization either owns a working interest or unleased mineral interest in the land including the proposed bottom hole location or has a right to drill this well at this location pursuant to a contract with an owner of such a mineral or working interest, or to a voluntary pooling agreement or a compulsory pooling order heretofore entered by the division.

Signature Date

David Stewart  
Printed Name

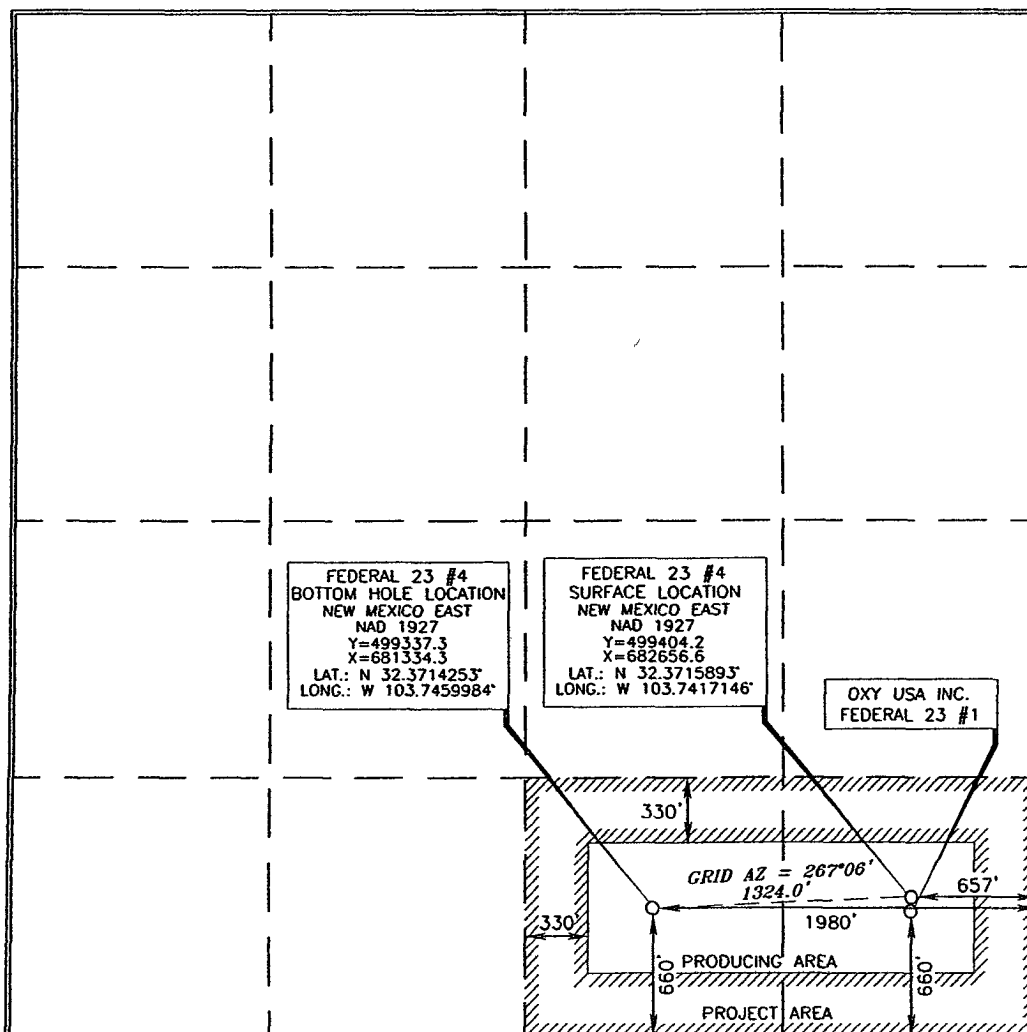
I hereby certify that the well location shown on this map was plotted from field notes of actual surveys made by me or under my supervision, and that the same is true and correct to the best of my belief.

15079  
APRIL 8, 2009  
Date of Survey

Signature and Seal of  
Professional Surveyor

Terry G. Paul 1/24/2009  
Certificate Number 15079

WO# 080917WL-a (Rev. C) (KA)



Submit to Appropriate  
District Office  
State Lease - 4 copies  
Fee Lease - 3 copies

State of New Mexico  
Energy, Minerals and Natural Resources Department

Form C-102  
Revised 1-1-89

OIL CONSERVATION DIVISION

DISTRICT I  
P.O. Box 1980, Hobbs, NM 88240

P.O. Box 2088  
Santa Fe, New Mexico 87504-2088

DISTRICT II  
P.O. Drawer DD, Artesia, NM 88210

DISTRICT III  
1000 Rio Brazos Rd., Aztec, NM 87410

WELL LOCATION AND ACREAGE DEDICATION PLAT

All Distances must be from the outer boundaries of the section

Operator POGO PRODUCING COMPANY			Lease Federal 23		Well No. 1
Unit Letter P	Section 23	Township 22 South	Range 31 East	County Eddy	

Actual Footage Location of Well: 660 feet from the South line and 660 feet from the East line					
Ground level Elev. 3574.0	Producing Formation BRUSHY CANYON		Pool UNDES. LIVINGSTON RIDGE DELAWARE	Dedicated Acreage: 40 Acres	

- Outline the acreage dedicated to the subject well by colored pencil or hatchure marks on the plat below.
- If more than one lease is dedicated to the well, outline each and identify the ownership thereof (both as to working interest and royalty).
- If more than one lease of different ownership is dedicated to the well, have the interest of all owners been consolidated by communitization, unitization, force-pooling, etc?  
☐ Yes ☐ No If answer is "yes" type of consolidation \_\_\_\_\_  
If answer is "no" list the owners and tract descriptions which have actually been consolidated. (Use reverse side of this form if necessary.)  
No allowable will be assigned to the well until all interests have been consolidated (by communitization, unitization, forced-pooling, or otherwise) or until a non-standard unit, eliminating such interest, has been approved by the Division.

OPERATOR CERTIFICATION

I hereby certify that the information contained herein is true and complete to the best of my knowledge and belief.

Signature

Printed Name

Richard Wright

Position

Drilling and Prod. Supt.

Company

POGO PRODUCING COMPANY

Date

May 7, 1990

SURVEYOR CERTIFICATION

I hereby certify that the well location shown on this plat was plotted from field notes of actual surveys made by me or under my supervision, and that the same is true and correct to the best of my knowledge and belief.

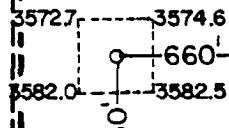
Date Surveyed

April 23, 1990

Signature & Seal of  
Professional Surveyor

Certificate No. 676

RONALD J. EIDSON, 3239



128830  
0 330 660 990 1320 1650 1980 2310 2640 2000 1500 1000 500 0