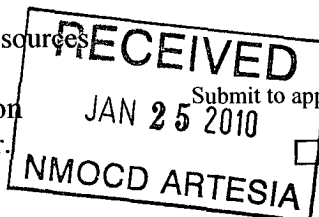


District I  
1625 N. French Dr., Hobbs, NM 88240  
District II  
1301 W. Grand Avenue, Artesia, NM 88210  
District III  
1000 Rio Brazos Road, Aztec, NM 87410  
District IV  
1220 S. St. Francis Dr., Santa Fe, NM 87505

State of New Mexico  
Energy Minerals and Natural Resources

Oil Conservation Division  
1220 South St. Francis Dr.  
Santa Fe, NM 87505

Form C-101  
June 16, 2008



APPLICATION FOR PERMIT TO DRILL, RE-ENTER, DEEPEN, PLUGBACK, OR ADD A ZONE

<sup>1</sup> Operator Name and Address Devon Energy Production Company L.P. 20 North Broadway OKC, OK 73102-8260		<sup>2</sup> OGRID Number 6137
<sup>3</sup> Property Code	<sup>4</sup> Property Name FH 28 State Com	<sup>5</sup> API Number 30-015-29270
<sup>9</sup> Proposed Pool 1 Carlsbad; Morrow South (Gas)		<sup>10</sup> Proposed Pool 2 2

<sup>7</sup> Surface Location

UL or lot no.	Section	Township	Range	Lot Idn	Feet from the	North/South line	Feet from the	East/West line	County
K	28	23S	26E		1980	South	1650	West	Eddy

<sup>8</sup> Proposed Bottom Hole Location If Different From Surface

UL or lot no.	Section	Township	Range	Lot Idn	Feet from the	North/South line	Feet from the	East/West line	County
K	28	23S	26E		1980	South	1650	West	Eddy

Additional Well Information

<sup>11</sup> Work Type Code Re-complete/Re-enter	<sup>12</sup> Well Type Code Gas	<sup>13</sup> Cable/Rotary R	<sup>14</sup> Lease Type Code State	<sup>15</sup> Ground Level Elevation 3344' GL
<sup>16</sup> Multiple N	<sup>17</sup> Proposed Depth 12,008'	<sup>18</sup> Formation Morrow	<sup>19</sup> Contractor	<sup>20</sup> Spud Date 12/09/1997
Depth to Groundwater		Distance from nearest fresh water well		Distance from nearest surface water
<sup>21</sup> Current & Proposed Casing and Cement Program				

Hole Size	Casing Size	Casing weight/foot	Setting Depth	Sacks of Cement	Estimated TOC
17 1/2"	13 3/8"	48# H-40 ST&C	615'	500 sx CLC	Surface
12 1/4"	9 5/8"	40 5# L-55 LT&C	1798'	900 sx CLC	Surface
8 3/4"	7"	23#/26# S95 LT&C	Cut off @ 665' (12,008')	1910 sx CLC	TOC per CBI @ 2,946'
Proposed: 6 1/8"	4 1/2"	11 6# P-110	11,900'	200 sx CLC	TOC @ 10,000'

<sup>22</sup> Describe the proposed program. If this application is to DEEPEN or PLUG BACK, give the data on the present productive zone and proposed new productive zone. Describe the blowout prevention program, if any. Use additional sheets if necessary.

Devon proposes to re-enter plugged wellbore, drill out CIBP's, run 4 1/2" casing and complete in the Morrow. See attached procedures:

- Depth to groundwater is 50' or more, but less than 100', distance to surface water is approximately 1000' or more, well is not in the wellhead protection area.
- No earthen pit to be constructed, closed loop system to be utilized; Form C-144 CLEZ previously submitted and approved.
- No H2S is expected to be encountered; H2S plan provided 5000 psi Double and Hydriil with drilling spool & rotating head to be used.
- Completion papers to be filed if a successful test; or subsequent report of work if no economic reserves
- If it is deemed non-commercial then it will be plugged and abandoned in accordance with the rules and regulations established by the New Mexico OCD.

<sup>23</sup> I hereby certify that the information given above is true and complete to the best of my knowledge and belief. I further certify that the drilling pit will be constructed according to NMOCD guidelines ☒, a general permit ☐, or an (attached) alternative OCD-approved plan ☐.

Printed name: Stephanie A. Ysasaga

Title: Sr. Staff Engineering Technician

E-mail Address: Stephanie.Ysasaga@dmv.com

Date: 01/21/2010

Phone: (405)-552-7802

OIL CONSERVATION DIVISION

Approved by:

Title:

Approval Date: 2/8/2010

Expiration Date: 2/8/2012

Conditions of Approval Attached ☐

**Devon Energy Corporation**  
**F H 28 State Com 2**  
**1980' FSL & 1650' FWL - SEC 28 – T23S – R26E**  
**Eddy County, NM**

**AFE # 144862      API # 30-015-29270    WI=89%**

**Objective:**                      Re-enter plugged wellbore, run 4 ½" casing, and complete in Morrow.

**Well Data:**

Surface Casing:                13-3/8" 48# H-40 STC @ 615' (TOC surface)

Intermed Casing:              9-5/8" 40# J-55 STC @ 1798' (TOC surface)

Production Casing:           7" 23/26# S-95 LTC @ 12,008' (TOC 2,946' CBL) DV Tool @ 7479'  
Note: 7" casing cut-off at 665'

PBTD:                           Cmt plug 0'-90' in 9 5/8", cmt plug 492'-730', cmt retainer 4190', CIBP  
4850'(4830'), CIBP 5075'(5055'), CIBP 7865'(7845'), CIBP 10,845'(10,825'),  
CIBP 11,350'(11,330'), CIBP 11,500'(11,480'), and FC at 11,941'.

KB:                              3,361'    GL: 3344'    Drilled: 1997

Tubing:                          None in well – will use 2 3/8" as workstring.

Proposed Interval:            11,300'-11,600' Morrow (perfs to follow)

Existing Perfs:                3592'-04', 4245' (squeezed with 300 sxs), 4908'-26', 5100'-54', 10,282-464'  
(squeezed w/ 200 sxs), 10,866'-926', 11,369'-88', and 11,516'-73'.

Fish:                             Vann Gun on top of CIBP at 11,500' and maybe on top of CIBP at 11,350'.

---

**Procedure:**

1. Before rig arrives, dig out wellhead and confirm size and rating of flange. NU riser spool. Dress location. Install anchors if not present.
2. RUPU. RU reverse unit and power swivel. Strip on BOP on top of 8 5/8" bit. NU stripping head. Drill out cmt from surface to 90'. RIH to next plug at 492'. CHC. Drill out cmt to top of 7" at 665'. CHC. Pressure test casing to 250 psig. ND BOP. POOH. LD bit. NU BOP.
3. RIH w/ 6 1/8" bit, two junk baskets, and 6 4 3/4" drill collars on 2 3/8" tubing to TOC at 665'. Drill out cmt to 730'. RIH to cmt retainer at 4190'. CHC. Drill retainer and cmt to squeeze holes at 4245'. CHC.

4. RIH and drill CIBP at 5075' and 7865'. CHC. RIH and drill 20' cmt on top of CIBP at 10,845'. CHC. POOH. RIH w/ shoe and cut over CIBP at 10,845'. POOH. RIH and fish out of hole if not in shoe.
5. RIH with new shoe and determine if TCP guns on top of CIBP at 11,350'. If not, cut over CIBP at 11,350'. POOH. RIH and fish out of hole if not in shoe.
6. RIH w/ overshot to retrieve Van guns dropped in hole on top of CIBP at 11,500' in 1997. POOH. RIH w/ bit or shoe and cut/drill out CIBP at 11,500'. RIH to PBTD at ~11,940'. CHC. POOH.
7. RU lay-down/pickup machine and casing handling tools. Change BOP rams to 4 ½". Make-up float shoe, one joint casing, float collar, and RIH w/ ~11,900' of 4 ½" casing. Fill casing after running about 5,000'. CHC. RD casing tools. RU BJ Services and cement casing (TOC ~10,000'). Drop wiper plug and displace cement. Do not over-displace. Reciprocate casing if possible while cementing. Place centralizers on collars of first 15 jts. WOC overnight.
8. Strip off or pickup BOP. Set slips. Make rough cut on casing. LD cut joint. Make final cut and NU tubing head. NU BOP. Pressure test casing to 4,000 psig.
9. RU wireline truck. Make GR/JB run to PBTD. Run CBL/GR/CCL from PBTD to TOC. Perforate Morrow w/ special 3 1/8" perforating guns (perfs to follow).  
Note: Correlate to Schlumberger Platform Express log dated 1/29/1997.
10. RIH w/ packer, o-o tool, on tubing and set pkr at ~11,300'.
11. RU swab. Swab dry. RU BJ Services and acidize Morrow perfs with 7 ½ % acid as per procedure. Take pressures. RD BJ.
12. RU swab. Swab test. Release packer and swab fluid level down to ~6,000', if possible. POOH.
13. RU BJ Services and sand frac Morrow down casing as per procedure. Take pressures. RD BJ.
14. Flow well until dead or cleaned up.
15. If still flowing, wireline set packer (w/ pump-out plug) at ~11,300'. If dead, RIH w/ packer on tubing and set at 11,300'.
16. RU swab. Swab well on production. RDMO.

District I  
1625 N. French Dr., Hobbs, NM 88240  
District II  
1301 W. Grand Avenue, Artesia, NM 88210  
District III  
1000 Rio Brazos Rd., Aztec, NM 87410  
District IV  
1220 S. St. Francis Dr., Santa Fe, NM 87505

State of New Mexico  
Energy, Minerals & Natural Resources Department  
**OIL CONSERVATION DIVISION**  
1220 South St. Francis Dr.  
Santa Fe, NM 87505

Form C-10  
Revised October 12, 200  
Submit to Appropriate District Office  
State Lease - 4 Copies  
Fee Lease - 3 Copies

☐ AMENDED REPORT

**WELL LOCATION AND ACREAGE DEDICATION PLAT**

<sup>1</sup> API Number 30-015-29270	<sup>2</sup> Pool Code	<sup>3</sup> Pool Name Morrow
<sup>4</sup> Property Code	<sup>5</sup> Property Name F H State Com	<sup>6</sup> Well Number 2
<sup>7</sup> OGRID No. 6137	<sup>8</sup> Operator Name Devon Energy Production Co., L.P.	<sup>9</sup> Elevation 3344'

**<sup>10</sup> Surface Location**

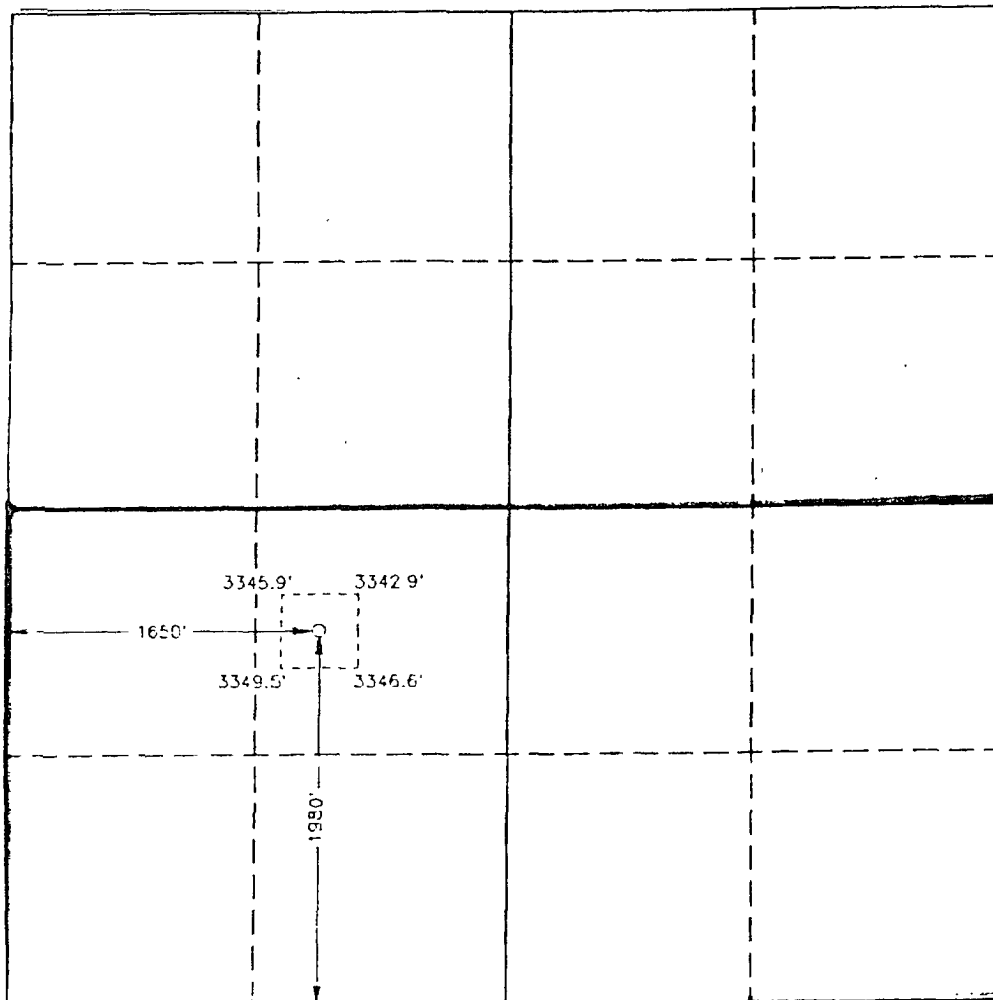
UL or lot no.	Section	Township	Range	Lot Idn	Feet from the	North/South line	Feet from the	East/West line	County
K	28	23S	26E		1980	South	1650	West	Eddy

**<sup>11</sup> Bottom Hole Location If Different From Surface**

UL or lot no.	Section	Township	Range	Lot Idn	Feet from the	North/South line	Feet from the	East/West line	County
K	28	23S	26E		1980	South	1650	West	Eddy

<sup>12</sup> Dedicated Acres 320	<sup>13</sup> Joint or Infill	<sup>14</sup> Consolidation Code	<sup>15</sup> Order No.
--------------------------------------	-------------------------------	----------------------------------	-------------------------

No allowable will be assigned to this completion until all interests have been consolidated or a non-standard unit has been approved by the division.



**<sup>17</sup> OPERATOR CERTIFICATION**

I hereby certify that the information contained herein is true and complete to the best of my knowledge and belief, and that this organization either owns a working interest or unleased mineral interest in the land including the proposed bottom hole location or has a right to drill this well at this location pursuant to a contract with an owner of such a mineral or working interest, or to a voluntary pooling agreement or a compulsory pooling order heretofore entered by the division.

Signature: *[Handwritten Signature]* Date: 01/21/10

Stephanie A. Ysasaga  
Printed Name

**<sup>18</sup> SURVEYOR CERTIFICATION**

I hereby certify that the well location shown on this plat was plotted from field notes of actual surveys made by me or under my supervision, and that the same is true and correct to the best of my belief.

Date of Survey  
Signature and Seal of Professional Surveyor

See Original Plat for Surveyor Certification

Certificate Number

DISTRICT I  
P.O. Box 1880, Hobbs, NM 88240

State of New Mexico  
Energy, Minerals and Natural Resources Department

Form C-102  
Revised February 10, 1994  
Instruction on back  
Submit to Appropriate District Office  
State Lease - 4 Copies  
Fee Lease - 3 Copies

DISTRICT II  
P.O. Drawer DD, Artesia, NM 88210

DISTRICT III  
1000 Rio Brazos Rd., Aztec, NM 87410

OIL CONSERVATION DIVISION

P.O. Box 2088  
Santa Fe, New Mexico 87504-2088

☐ AMENDED REPORT

WELL LOCATION AND ACREAGE DEDICATION PLAT

API Number	Pool Code 73960	Pool Name Carlsbad South - Morrow
Property Code 18743	Property Name F.H. 28 State Com.	Well Number 2
OGRID No. 147380	Operator Name Penwell Energy Inc.	Elevation 3346'

Surface Location

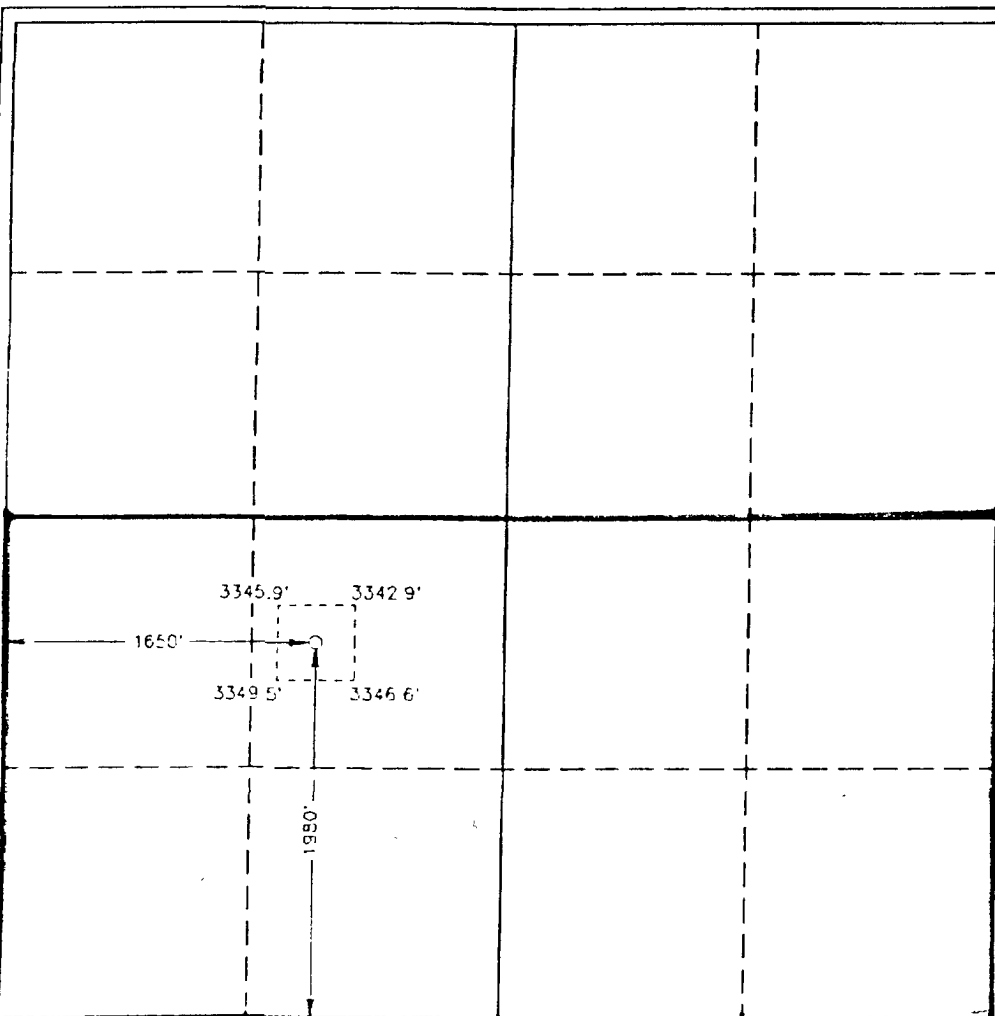
UL or lot No. K	Section 28	Township 23 S	Range 26 E	Lot Idn	Feet from the 1980	North/South line South	Feet from the 1650	East/West line West	County Eddy
--------------------	---------------	------------------	---------------	---------	-----------------------	---------------------------	-----------------------	------------------------	----------------

Bottom Hole Location If Different From Surface

UL or lot No.	Section	Township	Range	Lot Idn	Feet from the	North/South line	Feet from the	East/West line	County
---------------	---------	----------	-------	---------	---------------	------------------	---------------	----------------	--------

Dedicated Acres 320	Joint or Infill	Consolidation Code	Order No.
------------------------	-----------------	--------------------	-----------

NO ALLOWABLE WILL BE ASSIGNED TO THIS COMPLETION UNTIL ALL INTERESTS HAVE BEEN CONSOLIDATED  
OR A NON-STANDARD UNIT HAS BEEN APPROVED BY THE DIVISION



OPERATOR CERTIFICATION

I hereby certify the the information  
contained herein is true and complete to the  
best of my knowledge and belief

*Brenda Coffman*  
Signature

Brenda Coffman  
Printed Name  
Production Analyst  
Title

December 2, 1996  
Date

SURVEYOR CERTIFICATION

I hereby certify that the well location, shown  
on this plat was plotted from field notes of  
actual surveys made by me or under my  
supervision and that the same is true and  
correct to the best of my belief

November 23, 1996

Date Surveyed  
Signature & Seal of  
Professional Surveyor

*[Signature]*

W.O. No. 6528a

Certificate No. Gary L. Jones 7977

BASIN SURVEYS