

DISTRICT I
1825 N. French Dr., Hobbs, NM 88240

DISTRICT II
1301 W. Grand Avenue, Artesia, NM 88210

DISTRICT III
1000 Rio Brazos Rd., Aztec, NM 87410

DISTRICT IV
1220 S. St. Francis Dr., Santa Fe, NM 87505

State of New Mexico
Energy, Minerals and Natural Resources Department

Form C-102
Revised October 12, 2005

Submit to Appropriate District Office

State Lease - 4 Copies
Fee Lease - 3 Copies

OIL CONSERVATION DIVISION
1220 South St. Francis Dr.
Santa Fe, New Mexico 87505

MAR 09 2010

NMOCD ARTESIA

AMENDED REPORT

WELL LOCATION AND ACREAGE DEDICATION PLAT

API Number 30-015-35821	Pool Code 97691	Pool Name CROW FLATS ; ABO
Property Code 36629	Property Name COMET "22" FEDERAL COM	Well Number 3
OGRID No. 229137	Operator Name C.O.G. OPERATING L.L.C.	Elevation 3611'

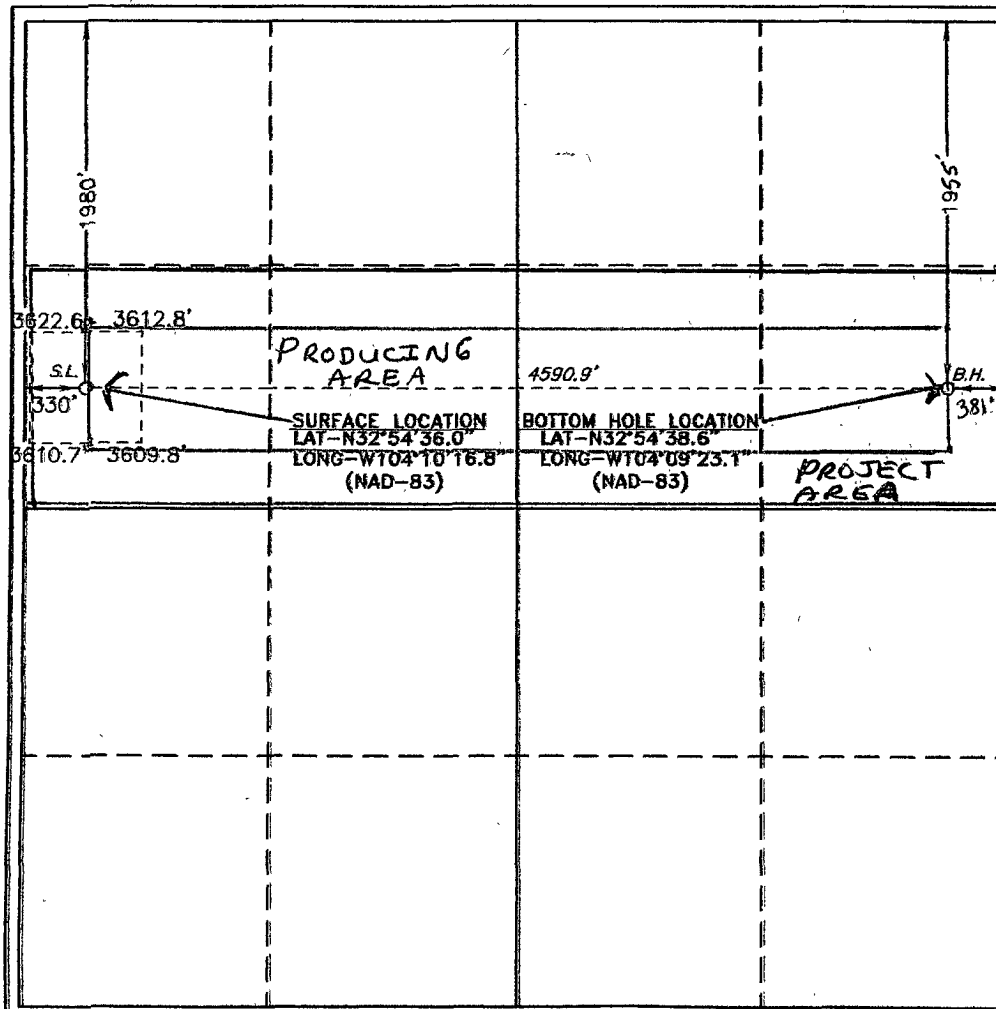
Surface Location

UL or lot No. E	Section 22	Township 16 S	Range 28 E	Lot Idn	Feet from the 1980	North/South line NORTH	Feet from the 330	East/West line WEST	County EDDY
--------------------	---------------	------------------	---------------	---------	-----------------------	---------------------------	----------------------	------------------------	----------------

Bottom Hole Location If Different From Surface

UL or lot No. H	Section 22	Township 16 S	Range 28 E	Lot Idn	Feet from the 1955	North/South line NORTH	Feet from the 381	East/West line EAST	County EDDY
Dedicated Acres 160	Joint or Infill	Consolidation Code	Order No.						

NO ALLOWABLE WILL BE ASSIGNED TO THIS COMPLETION UNTIL ALL INTERESTS HAVE BEEN CONSOLIDATED
OR A NON-STANDARD UNIT HAS BEEN APPROVED BY THE DIVISION



OPERATOR CERTIFICATION

I hereby certify that the information contained herein is true and complete to the best of my knowledge and belief, and that this organization either owns a working interest or unleased mineral interest in the land including the proposed bottom hole location pursuant to a contract with an owner of such a mineral or working interest, or to a voluntary pooling agreement or a compulsory pooling order heretofore entered by the division.

Phyllis A. Edwards 6-18-07
Signature Date

PHYLLIS A. EDWARDS
Printed Name
REGULATORY ANALYST

SURVEYOR CERTIFICATION

I hereby certify that the well location shown on this plat was plotted from field notes of actual surveys made by me or under my supervision, and that the same is true and correct to the best of my belief.

APRIL 11 2007

Date Surveyed
Signature
Professional Surveyor

Gary L. Jones
Signature
Professional Surveyor

Certificate No. Gary L. Jones 7977

BASIN SURVEYS