

UNITED STATES  
DEPARTMENT OF THE INTERIOR  
BUREAU OF LAND MANAGEMENT  
APPLICATION FOR PERMIT TO DRILL OR DEEPEN

1a. TYPE OF WORK ☒ DRILL ☐ DEEPEN

b. TYPE OF WELL  
OIL WELL ☐ GAS WELL ☒ OTHER ☐  
SINGLE ZONE ☒ MULTIPLE ZONE ☐

2. NAME OF OPERATOR **193487**  
RICKS EXPLORATION, INC. (ERICK NELSON 915-683-7443)

3. ADDRESS AND TELEPHONE NO.  
110 WEST LOUISIANA SUITE 410 MIDLAND, TEXAS 79701 (915-683-7443)

4. LOCATION OF WELL (Report location clearly and in accordance with any State requirements.)  
At surface  
Surface: 1861' FNL & 1874' FEL SEC. 20 T22S-R26E EDDY CO. NM  
At proposed prod. zone 660' FWL & 660' FNL SEC. 20 T22S-R26E EDDY CO. NM  
**W.G. SUBJECT TO LIKE APPROVAL BY STATE**

14. DISTANCE IN MILES AND DIRECTION FROM NEAREST TOWN OR POST OFFICE  
Approximately 7 miles Northwest of Carlsbad New Mexico.

15. DISTANCE FROM PROPOSED LOCATION TO NEAREST PROPERTY OR LEASE LINE, FT.  
(Also to nearest drlg. unit line, if any) 1861'

16. NO. OF ACRES IN LEASE 360

17. NO. OF ACRES ASSIGNED TO THIS WELL 320

18. DISTANCE FROM PROPOSED LOCATION TO NEAREST WELL, DRILLING, COMPLETED, OR APPLIED FOR, ON THIS LEASE, FT. 190'

19. PROPOSED DEPTH  
MD 13,400'  
TVD 11,900'

20. ROTARY OR CABLE TOOLS  
ROTARY

21. ELEVATIONS (Show whether DF, RT, GR, etc.)  
3342' GR. **Carlsbad Controlled Water Basin**

22. APPROX. DATE WORK WILL START WHEN APPROVED

23. PROPOSED CASING AND CEMENTING PROGRAM				
SIZE OF HOLE	GRADE SIZE OF CASING	WEIGHT PER FOOT	SETTING DEPTH	QUANTITY OF CEMENT
25"	Conductor	NA	40'	Cement to surface with Redi-mix.
17½"	H-40 13 3/8"	48	750'	600 Sx. circulate cement
12½"	S-80, J-55 9 5/8"	40	2550' 2300'	800 Sx. " "
8 3/4"	S-95, N-80 5½"	17	13,400'	1050 Sx. estimate TOC 7000'

1. Drill 25" hole to 40'. Set 40' of 20" conductor pipe and cement to surface with Redi-Mix.
2. Drill 17½" hole to 750'. Run and set 750' of 13 3/8" 48# H-40 ST&C casing. Cement with 600 Sx. of Class "C" cement + 2% CaCl<sub>2</sub> + ¼# Flocele/Sx., circulate cement to surface.
3. Drill 12½" hole to 2550'. Run and set 2300' of 9 5/8" 40# S-80 & J-55 ST&C casing. Cement with 600 Sx. of Class "C" Light cement + additives, tail in with 200 Sx. of Class "C" cement + 2% CaCl<sub>2</sub> + ¼# Flocele/Sx., circulate cement to surface.
4. Drill 8 3/4" hole to 13,400'. Run and set 13,400' of 5½" casing as follows: 2900' of 5½" 17# S-95, LT&C, 8900' of 5½" 17# N-80 LT&C, 1600' of 5½" 17# N-80 Buttress thread. Cement with 550 Sx. of Class "H" Light weight cement + additives, tail in with 500 Sx. of Class "H" Premium Plus cement + additives, estimate top of cement 7000'.

IN ABOVE SPACE DESCRIBE PROPOSED PROGRAM: If proposal is to deepen, give data on present productive zone and proposed new productive zone. If proposal is to drill or deepen directionally, give pertinent data on subsurface locations and measured and true vertical depths. Give blowout preventer program, if any.

24. SIGNED [Signature] APPROVAL SUBJECT TO GENERAL REQUIREMENTS AND SPECIAL STIPULATIONS ATTACHED DATE 12/14/02

(This space for Federal or State office use)

PERMIT NO. \_\_\_\_\_ APPROVAL DATE \_\_\_\_\_

Application approval does not warrant or certify that the applicant holds legal or equitable title to those rights in the subject lease which would entitle the applicant to conduct operations thereon.

CONDITIONS OF APPROVAL, IF ANY:

APPROVED BY IS/ JOE G. LARA ACTING FIELD MANAGER DATE MAR 24 2003

\*See Instructions On Reverse Side APPROVAL FOR 1 YEAR

DISTRICT I  
P.O. Box 1880, Hobbs, NM 88241-1880

DISTRICT II  
P.O. Drawer DD, Artesia, NM 88211-0719

DISTRICT III  
1000 Rio Brazos Rd., Aztec, NM 87410

DISTRICT IV  
P.O. BOX 2088, SANTA FE, N.M. 87504-2088

State of New Mexico  
Energy, Minerals and Natural Resources Department

Form C-102  
Revised February 10, 1994  
Submit to Appropriate District Office  
State Lease - 4 Copies  
Fee Lease - 3 Copies

OIL CONSERVATION DIVISION

P.O. Box 2088  
Santa Fe, New Mexico 87504-2088

☐ AMENDED REPORT

WELL LOCATION AND ACREAGE DEDICATION PLAT

API Number	Pool Code 78060	Pool Name HAPPY VALLEY-MORROW GAS
Property Code	Property Name FLOYD "RI" FEDERAL COM	Well Number 2
OGRID No. 193407	Operator Name RICKS EXPLORATION	Elevation 3342'

Surface Location

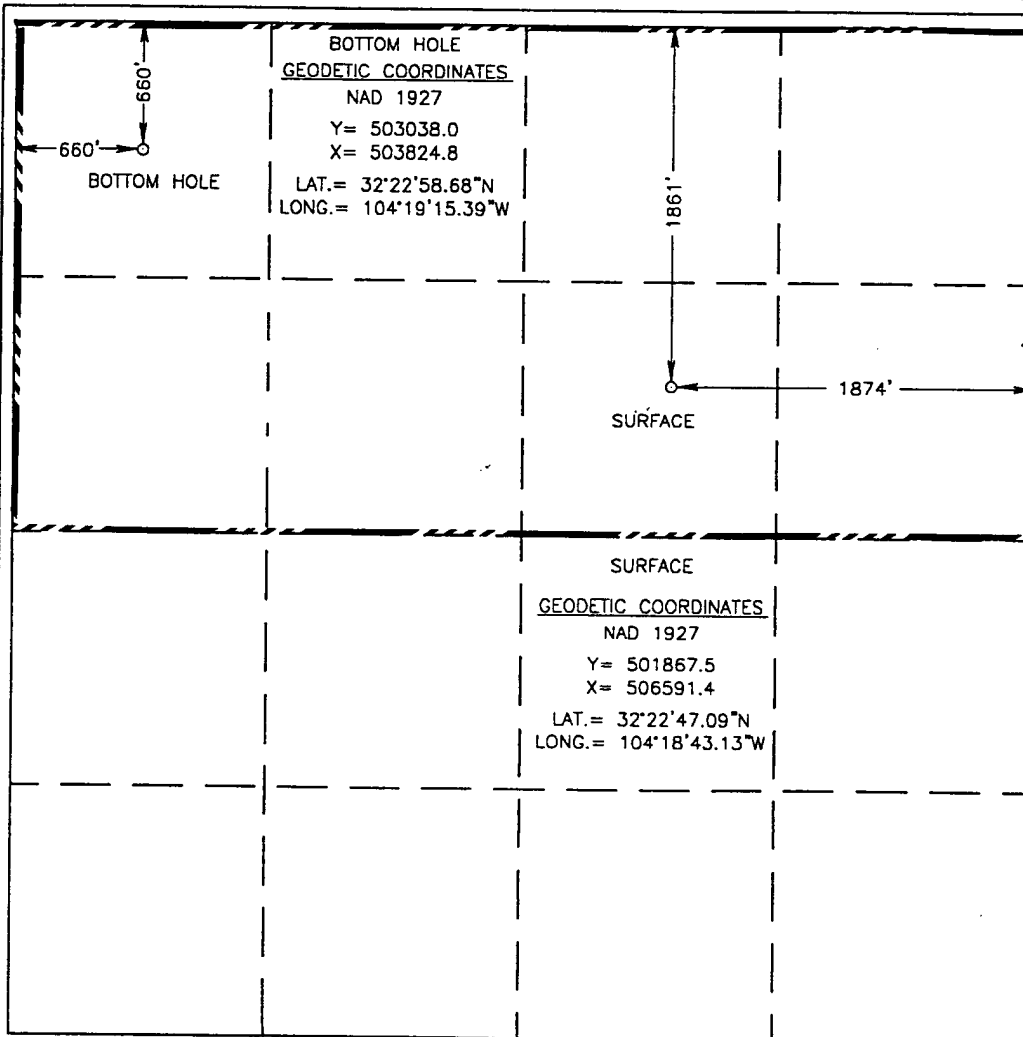
UL or lot No. G	Section 20	Township 22-S	Range 26-E	Lot Idn	Feet from the 1861'	North/South line NORTH	Feet from the 1874'	East/West line EAST	County EDDY
--------------------	---------------	------------------	---------------	---------	------------------------	---------------------------	------------------------	------------------------	----------------

Bottom Hole Location If Different From Surface

UL or lot No. D	Section 20	Township 22-S	Range 26-E	Lot Idn	Feet from the 660'	North/South line NORTH	Feet from the 660'	East/West line WEST	County EDDY
--------------------	---------------	------------------	---------------	---------	-----------------------	---------------------------	-----------------------	------------------------	----------------

Dedicated Acres 320	Joint or Infill	Consolidation Code	Order No.
------------------------	-----------------	--------------------	-----------

NO ALLOWABLE WILL BE ASSIGNED TO THIS COMPLETION UNTIL ALL INTERESTS HAVE BEEN CONSOLIDATED  
OR A NON-STANDARD UNIT HAS BEEN APPROVED BY THE DIVISION



OPERATOR CERTIFICATION

I hereby certify the the information  
contained herein is true and complete to the  
best of my knowledge and belief.

*Joe T. Janica*  
Signature

Joe T. Janica  
Printed Name  
Agent

Title  
12/14/02  
Date

SURVEYOR CERTIFICATION

I hereby certify that the well location shown  
on this plat was plotted from field notes of  
actual surveys made by me or under my  
supervision, and that the same is true and  
correct to the best of my belief.

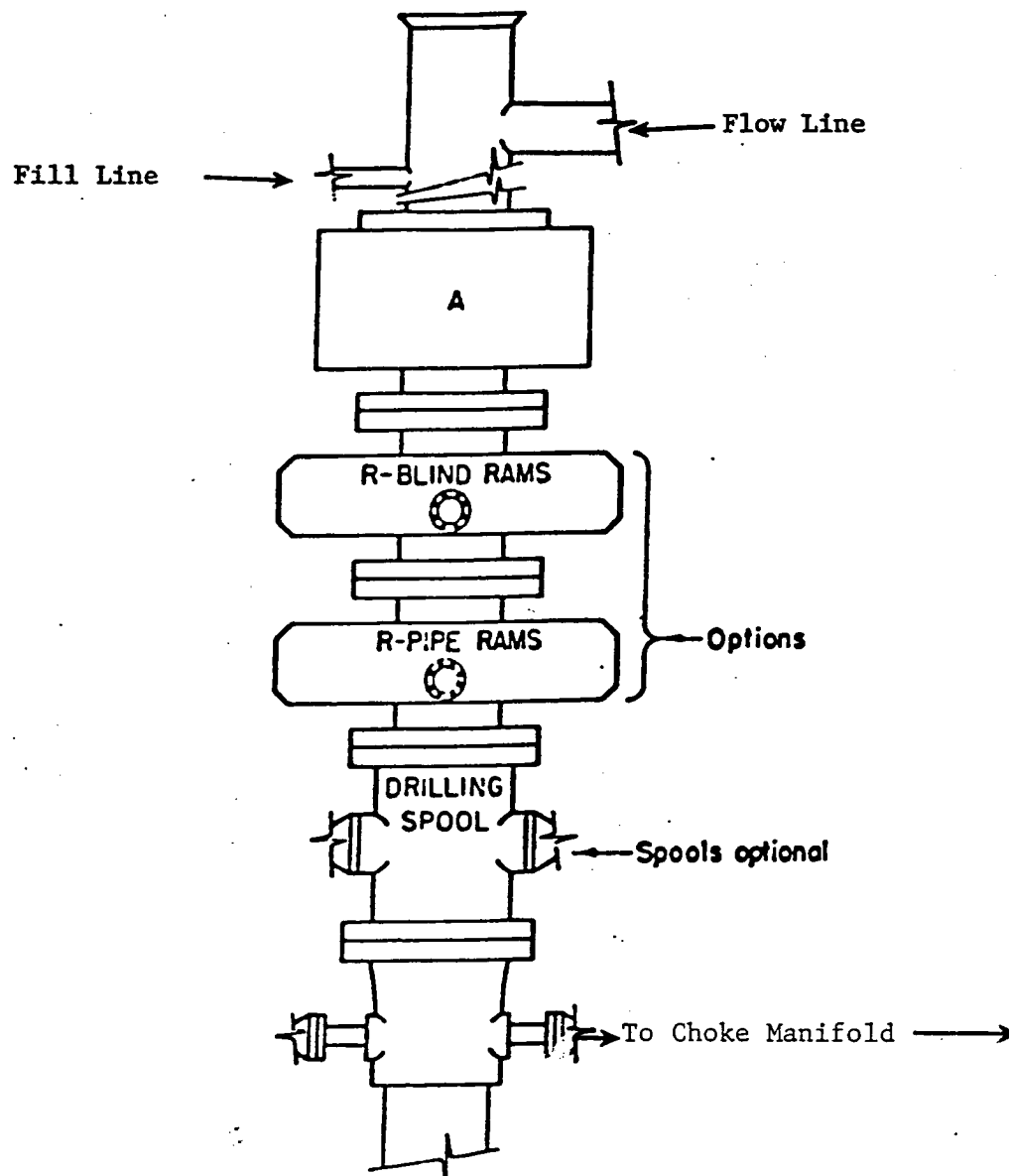
NOVEMBER 12, 2002

Date Surveyed AWB

Signature & Seal of  
Professional Surveyor

*Ronald J. Eidson*  
02.11.0868

Certificate No. RONALD J. EIDSON 3239  
CARY EIDSON 12641



# **ARRANGEMENT SRRA**

1500 Series  
5000# Working Pressure

EXHIBIT "E"  
SKETCH OF B.O.P. TO BE USED ON

RICKS EXPLORATION, INC.  
FLOYD "RI" COM. # 2  
UNIT "G" SECTION 20  
T22S-R26E EDDY CO. NM

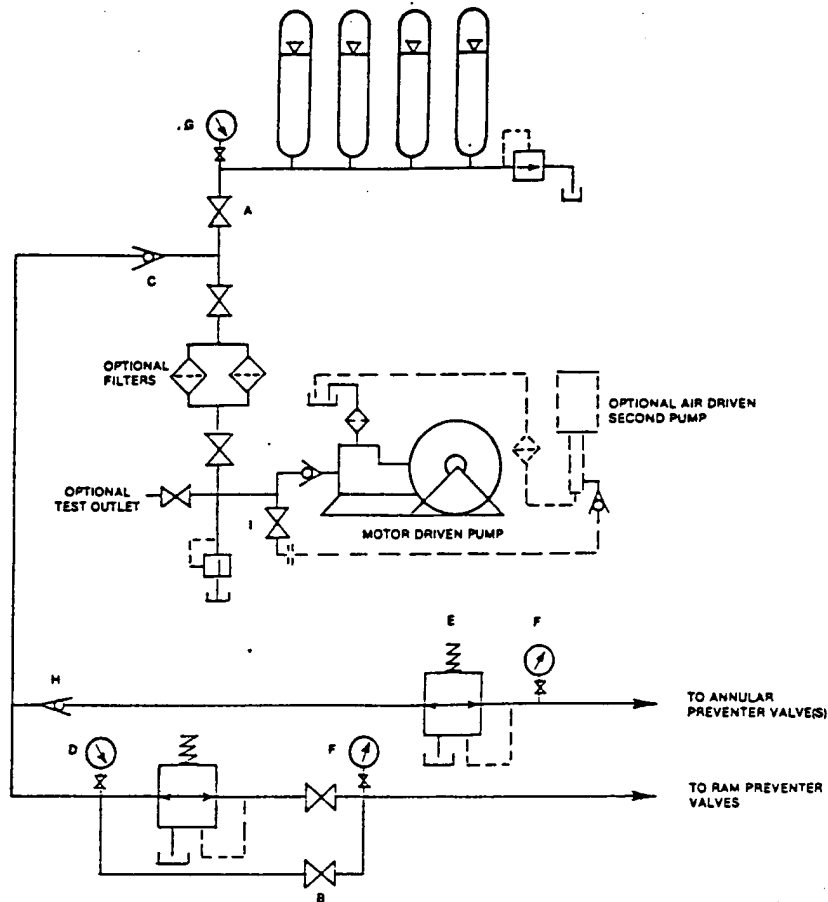


FIGURE K6-1. The schematic sketch of an accumulator system shows required and optional components.

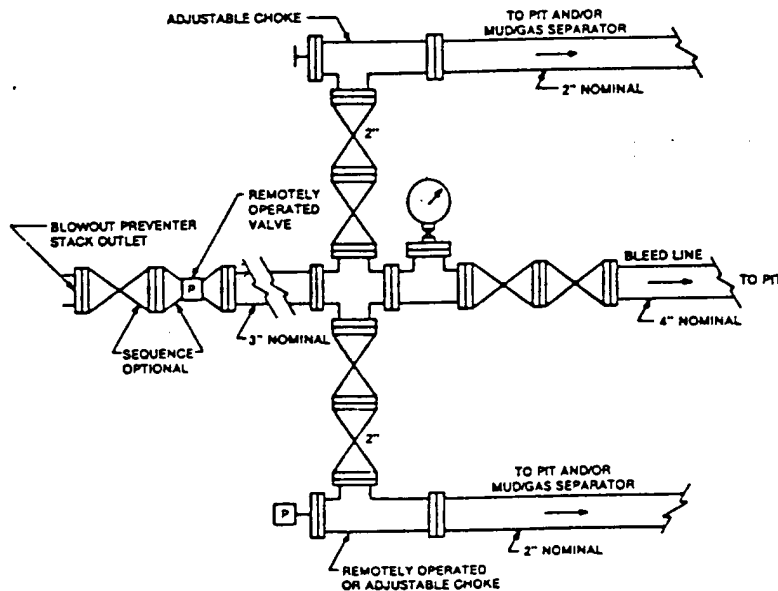


FIGURE K4-2. Typical choke manifold assembly for 5M rated working pressure service — surface installation.

EXHIBIT "E-1"  
CHOKE MANIFOLD & CLOSING UNIT

RICKS EXPLORATION, INC.  
FLOYD "RI" COM. # 2  
UNIT "G" SECTION 20  
T22S-R26E EDDY CO. NM