

OCD-ARTESIA  
E-34  
UNITED STATES  
DEPARTMENT OF THE INTERIOR  
BUREAU OF LAND MANAGEMENT

FORM APPROVED  
OMB No. 1004-0136  
Expires November 30, 2000

APPLICATION FOR PERMIT TO DRILL OR REENTER

1a. Type of Work: <input checked="" type="checkbox"/> DRILL <input type="checkbox"/> REENTER		5. Lease Serial No. NMLC028784C
1b. Type of Well: <input checked="" type="checkbox"/> Oil Well <input type="checkbox"/> Gas Well <input type="checkbox"/> Other <input checked="" type="checkbox"/> Single Zone <input type="checkbox"/> Multiple Zone		6. If Indian, Allottee or Tribe Name
2. Name of Operator MARBOB ENERGY CORPORATION		7. If Unit or CA Agreement, Name and No. NMNM88525X
Contact: DIANA CANNON E-Mail: production@marbob.com		8. Lease Name and Well No. BURCH KEELY UNIT 920
3a. Address P O BOX 227 ARTESIA, NM 88211-0227	3b. Phone No. (include area code) Ph: 505.748.3303 Fx: 505.746.2523	9. API Well No. 30-015-32713
4. Location of Well (Report location clearly and in accordance with any State requirements.) At surface SWSE Lot O 609FSL 1941FEL At proposed prod. zone SWSE Lot O 609FSL 1941FEL		10. Field and Pool, or Exploratory GRBG JACKSON SR Q GRBG SA
14. Distance in miles and direction from nearest town or post office* SEE SURFACE USE PLAN		11. Sec., T., R., M., or Blk. and Survey or Area Sec 24 T17S R29E Mer NMP
15. Distance from proposed location to nearest property or lease line, ft. (Also to nearest drig. unit line, if any) 609'	16. No. of Acres in Lease 1440.00	12. County or Parish EDDY
18. Distance from proposed location to nearest well, drilling, completed, applied for, on this lease, ft.	19. Proposed Depth 4800 MD	13. State NM
21. Elevations (Show whether DF, KB, RT, GL, etc.) 3600 GL	22. Approximate date work will start 03/17/2003	17. Spacing Unit dedicated to this well 40.00
		20. BLM/BIA Bond No. on file
		23. Estimated duration 21 DAYS

24. Attachments

The following, completed in accordance with the requirements of Onshore Oil and Gas Order No. 1, shall be attached to this form:

- |   |  |
|---|--|
| 1. Well plat certified by a registered surveyor.  | 4. Bond to cover the operations unless covered by an existing bond on file (see Item 20 above).    |
| 2. A Drilling Plan.   | 5. Operator certification  |
| 3. A Surface Use Plan (if the location is on National Forest System Lands, the SUPO shall be filed with the appropriate Forest Service Office). | 6. Such other site specific information and/or plans as may be required by the authorized officer. |

25. Signature (Electronic Submission)	Name (Printed/Typed) DIANA CANNON	Date 02/18/2003
Title AUTHORIZED REPRESENTATIVE		
Approved by (Signature) /s/ LESLIE A. THEISS	Name (Printed/Typed) /s/ LESLIE A. THEISS	Date MAR 25 2003
Title FIELD MANAGER	Office CARLSBAD FIELD OFFICE	

Application approval does not warrant or certify the applicant holds legal or equitable title to those rights in the subject lease which would entitle the applicant to conduct operations thereon.  
Conditions of approval, if any, are attached.

APPROVAL FOR 1 YEAR

Title 18 U.S.C. Section 1001 and Title 43 U.S.C. Section 1212, make it a crime for any person knowingly and willfully to make to any department or agency of the United States any false, fictitious or fraudulent statements or representations as to any matter within its jurisdiction.

Additional Operator Remarks (see next page)

Electronic Submission #18614 verified by the BLM Well Information System  
For MARBOB ENERGY CORPORATION, sent to the Carlsbad  
Committed to AFMSS for processing by Armando Lopez on 02/18/2003 (03AL0141AE)

**APPROVAL SUBJECT TO  
GENERAL REQUIREMENTS AND  
SPECIAL STIPULATIONS  
ATTACHED**

\*\* REVISED \*\* REVISED \*\* REVISED \*\* REVISED \*\* REVISED \*\* REVISED \*\* REVISED \*\*

**Additional Operator Remarks:**

12 1/4" HOLE - 8 5/8" J55 24# CSG SET @ 350' - CMT W/ 300 SX  
7 7/8" HOLE - 5 1/2" J55 17# CSG SET @ 4800' - CMT SUFFICIENT TO COVER 200' ABOVE ALL KNOWN OIL & GAS  
HORIZONS.

PRESSURE CONTROL EQUIPMENT: WE WILL BE USING A 2M SYSTEM. (SEE EXHIBIT #1)

PAY ZONE WILL BE SELECTIVELY PERFORATED AND STIMULATED AS NEEDED FOR OPTIMUM PRODUCTION.

MASTER SURFACE USE PLAN ON FILE AT BLM ROSWELL.

INCLUDED IN THE ATTACHMENT ARE:

1. WELL LOCATION & ACREAGE DEDICATION PLAT
2. DRILLING PROGRAM & SURFACE USE PLAN
3. SUPPLEMENTAL DRILLING DATA (EXHIBITS #1 - #4)

DISTRICT I  
P.O. Box 1988, Hobbs, NM 88241-1988

DISTRICT II  
P.O. Drawer DD, Artesia, NM 88211-0719

DISTRICT III  
1000 Rio Brazos Rd., Aztec, NM 87410

DISTRICT IV  
P.O. Box 2088, Santa Fe, N.M. 87504-2088

State of New Mexico  
Energy, Minerals and Natural Resources Department

OIL CONSERVATION DIVISION  
P.O. Box 2088  
Santa Fe, New Mexico 87504-2088

Form C-102  
Revised February 10, 1994  
Submit to Appropriate District Office  
State Lease - 4 Copies  
Fee Lease - 3 Copies

WELL LOCATION AND ACREAGE DEDICATION PLAT

☐ AMENDED REPORT

API Number 30-015-	Pool Code 28509	Pool Name GRBG JACKSON SR O GRBG SA
Property Code 006497	Property Name BURCH KEELY UNIT	Well Number 920
OGRID No. 14049	Operator Name MARBOB ENERGY CORPORATION	Elevation 3600'

Surface Location

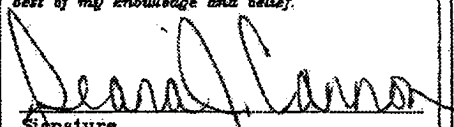
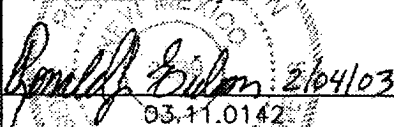
UL or lot No. 0	Section 24	Township 17-S	Range 29-E	Lot Idn	Feet from the 609	North/South line SOUTH	Feet from the 1941	East/West line EAST	County EDDY
--------------------	---------------	------------------	---------------	---------	----------------------	---------------------------	-----------------------	------------------------	----------------

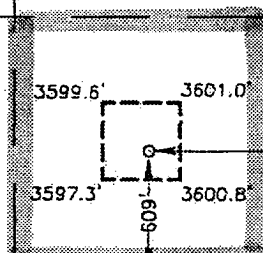
Bottom Hole Location If Different From Surface

UL or lot No.	Section	Township	Range	Lot Idn	Feet from the	North/South line	Feet from the	East/West line	County
---------------	---------	----------	-------	---------	---------------	------------------	---------------	----------------	--------

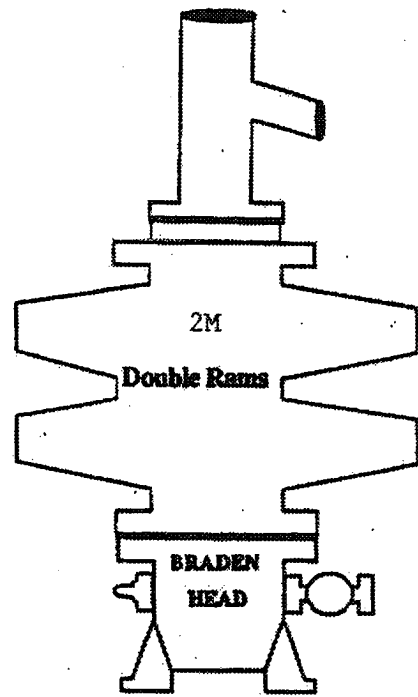
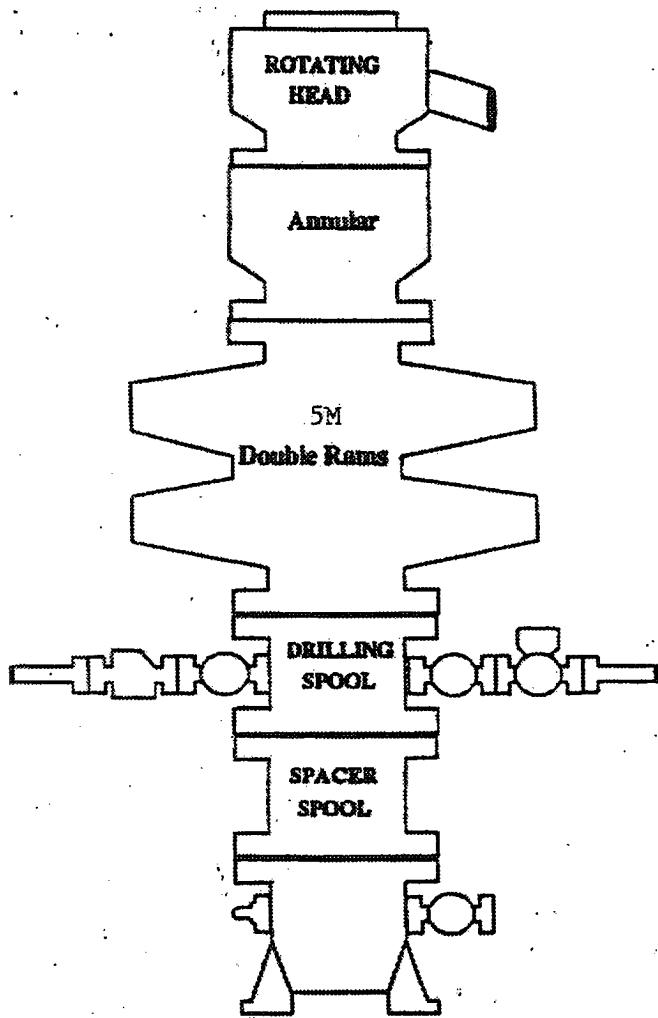
Dedicated Acres 40	Joint or Infill	Consolidation Code	Order No.
-----------------------	-----------------	--------------------	-----------

NO ALLOWABLE WILL BE ASSIGNED TO THIS COMPLETION UNTIL ALL INTERESTS HAVE BEEN CONSOLIDATED  
OR A NON-STANDARD UNIT HAS BEEN APPROVED BY THE DIVISION

				OPERATOR CERTIFICATION			
				I hereby certify the the information contained herein is true and complete to the best of my knowledge and belief.			
				 Signature			
				DIANA J. CANNON Printed Name			
				PRODUCTION ANALYST Title			
				FEBRUARY 16, 2003 Date			
				SURVEYOR CERTIFICATION			
				I hereby certify that the well location shown on this plat was plotted from field notes of actual surveys made by me or under my supervision, and that the same is true and correct to the best of my belief.			
				FEBRUARY 4, 2003 Date Surveyed			
				 Signature & Seal of Professional Surveyor			
				Certificate No. RONALD J. EIDSON 3238 GARY EIDSON 12641			

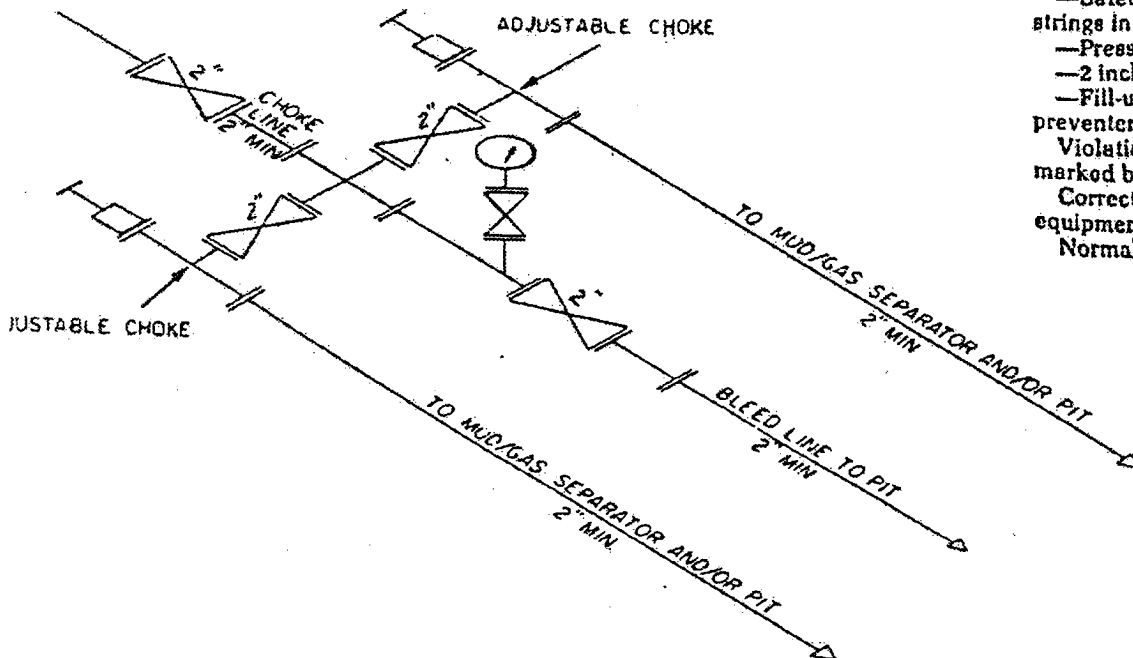


# BOPE SCHEMATIC



ONSHORE OIL AND GAS ORDER NO. 2

- 2M system:
- Annular preventer, or, double ram, or two rams with one being blind and one being a pipe ram \*
  - Kill line (2 inch minimum)
  - 1 kill line valve (2 inch minimum)
  - 1 choke line valve
  - 2 chokes (refer to diagram in Attachment 1)
  - Upper kelly cock valve with handle available
  - Safety valve and subs to fit all drill strings in use
  - Pressure gauge on choke manifold
  - 2 inch minimum choke line
  - Fill-up line above the uppermost preventer.
- Violation: Minor (all items unless marked by asterisk).
- Corrective Action: Install the equipment as specified.
- Normal Abatement Period: 24 hours.



2M CHOKE MANIFOLD EQUIPMENT — CONFIGURATION OF CHOKES

MAY VARY

Exhibit One