

DISTRICT I
1625 N. FRENCH DR., HOBBS, NM 88240

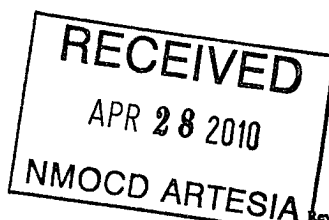
DISTRICT II
1301 W. GRAND AVENUE, ARTESIA, NM 88210

DISTRICT III
1000 RIO BRAZOS RD., AZTEC, NM 87410

DISTRICT IV
11885 S. ST. FRANCIS DR., SANTA FE, NM 87505

State of New Mexico
Energy, Minerals and Natural Resources Department

OIL CONSERVATION DIVISION
11885 SOUTH ST. FRANCIS DR.
Santa Fe, New Mexico 87505



Form C-102
Revised October 12, 2005
Submit to Appropriate District Office
State Lease - 4 Copies
For Lease - 3 Copies

WELL LOCATION AND ACREAGE DEDICATION PLAT

☐ AMENDED REPORT

API Number 30-015-37295	Pool Code 97558	Pool Name GJ; 7Rvs-Qn-Gb-Glorieta-Yeso
Property Code 302497	Property Name GJ WEST COOP UNIT	Well Number 277
OGRID No. 229137	Operator Name COG OPERATING, LLC	Elevation 3562'

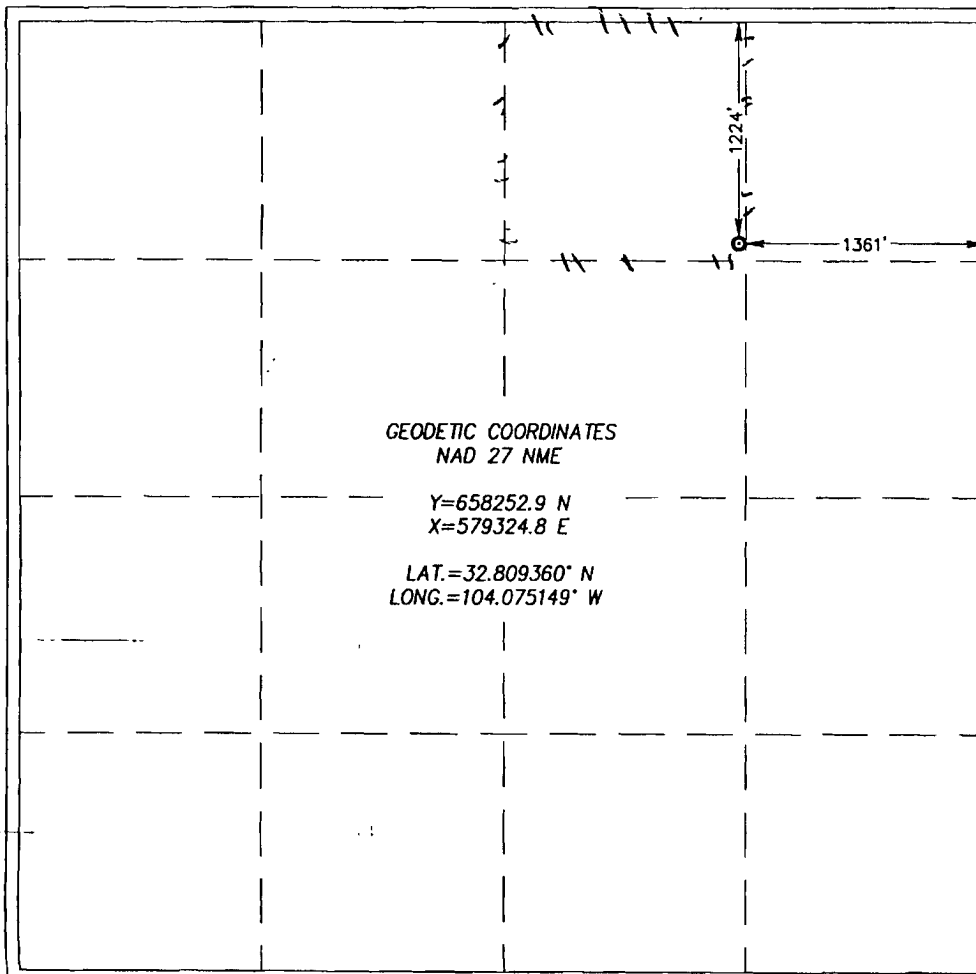
Surface Location

UL or lot No.	Section	Township	Range	Lot Idn	Feet from the	North/South line	Feet from the	East/West line	County
B	28	17-S	29-E		1224	NORTH	1361	EAST	EDDY

Bottom Hole Location If Different From Surface

UL or lot No.	Section	Township	Range	Lot Idn	Feet from the	North/South line	Feet from the	East/West line	County
Dedicated Acres 40	Joint or Infill	Consolidation Code	Order No. NSL-6085-A						

NO ALLOWABLE WILL BE ASSIGNED TO THIS COMPLETION UNTIL ALL INTERESTS HAVE BEEN CONSOLIDATED
OR A NON-STANDARD UNIT HAS BEEN APPROVED BY THE DIVISION



OPERATOR CERTIFICATION

I hereby certify that the information herein is true and complete to the best of my knowledge and belief, and that this organization either owns a working interest or unleased mineral interest in the land including the proposed bottom hole location or has a right to drill this well at this location pursuant to a contract with an owner of such mineral or working interest, or to a voluntary pooling agreement or a compulsory pooling order heretofore entered by the division.

Signature: *KC* Date: 04/12/10
Printed Name: Kanicia Carrillo

SURVEYOR CERTIFICATION

I hereby certify that the well location shown on this plat was plotted from field notes of actual surveys made by me or under my supervision, and that the same is true and correct to the best of my belief.

Signature & Seal of Professional Surveyor: *Ronald J. Eidson*
Date Surveyed: 12-23-09
Professional Surveyor: 09.11.1323

Certificate No. GARY G. EIDSON 12641
RONALD J. EIDSON 3239