

DISTRICT I
1625 N. French Dr., Hobbs, NM 88240

DISTRICT II
1301 W. Grand Avenue, Artesia, NM 88210

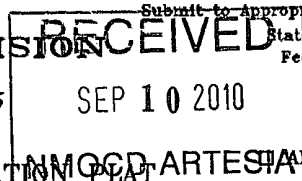
DISTRICT III
1000 Rio Brazos Rd., Aztec, NM 87410

DISTRICT IV
1220 S. St. Francis Dr., Santa Fe, NM 87505

State of New Mexico
Energy, Minerals and Natural Resources Department

Form C-102
Revised October 12, 2005

OIL CONSERVATION DIVISION
1220 South St. Francis Dr.
Santa Fe, New Mexico 87505



WELL LOCATION AND ACREAGE DEDICATION PLAT

API Number 30-015-37794	Pool Code 96718	Pool Name Loco Hills; Glorieta-Yeso
Property Code 37350	Property Name POSEIDON "3" FEDERAL	Well Number 17
OGRID No. 162683	Operator Name CIMAREX ENERGY CO. OF COLORADO	Elevation 3729'

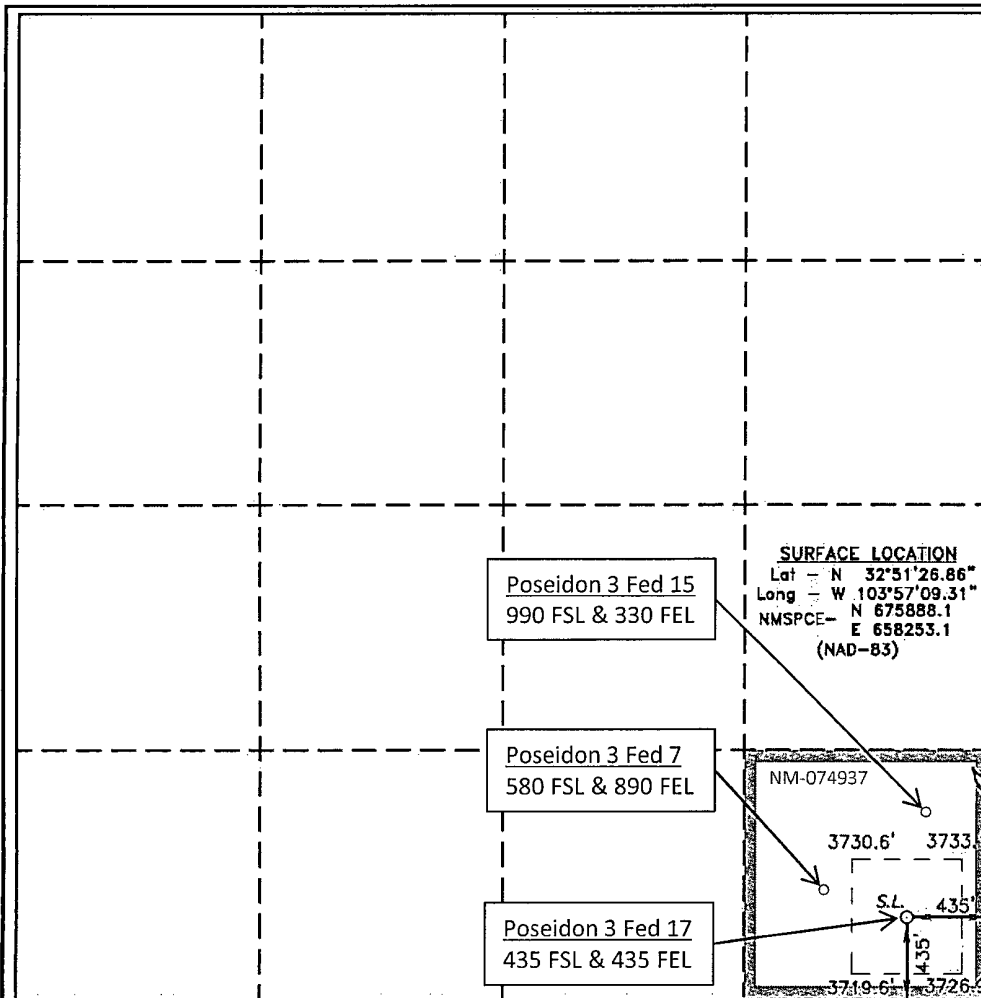
Surface Location

UL or lot No.	Section	Township	Range	Lot Idn	Feet from the	North/South line	Feet from the	East/West line	County
P	3	17 S	30 E		435	SOUTH	435	EAST	EDDY

Bottom Hole Location If Different From Surface

UL or lot No.	Section	Township	Range	Lot Idn	Feet from the	North/South line	Feet from the	East/West line	County
Dedicated Acres	Joint or Infill	Consolidation Code	Order No.						
40	I								

NO ALLOWABLE WILL BE ASSIGNED TO THIS COMPLETION UNTIL ALL INTERESTS HAVE BEEN CONSOLIDATED
OR A NON-STANDARD UNIT HAS BEEN APPROVED BY THE DIVISION



OPERATOR CERTIFICATION

I hereby certify that the information contained herein is true and complete to the best of my knowledge and belief, and that this organization either owns a working interest or unleased mineral interest in the land including the proposed bottom hole location pursuant to a contract with an owner of such a mineral or working interest, or to a voluntary pooling agreement or a compulsory pooling order heretofore entered by the division.

Zeno Farris 9/5/2010
Signature Date

Zeno Farris
Printed Name

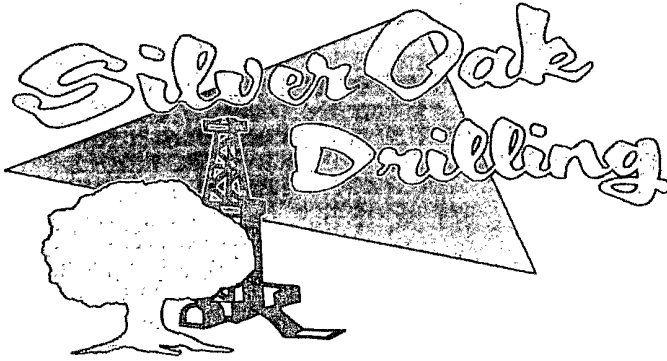
SURVEYOR CERTIFICATION

I hereby certify that the well location shown on this plat was plotted from field notes of actual surveys made by me or under my supervision and that the same is true and correct to the best of my belief.

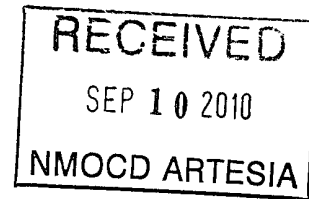
GARY L. JONES 2009
Date Surveyed
Signature and Seal of Professional Surveyor
Professional Surveyor
2012

Certificate No. Gary L. Jones 7977

BASIN SURVEYS



PO Box 1370
Artesia, NM 88211-1370
(575) 748-1288



May 18, 2010

Cimarex Energy Co.
Attn: Jim Evans
600 N. Marienfeld, Suite 600
Midland, TX 79701

RE: Poseidon 3 Federal #17
Eddy County, New Mexico

Dear Sir,

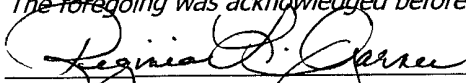
The attached is the Deviation Survey for the above captioned well.

Very truly yours,


Eddie C. LaRue
Operations Manager

State of New Mexico }
County of Eddy }

The foregoing was acknowledged before me this 18th day of May, 2010.


Regina L. Garner
Notary Public

